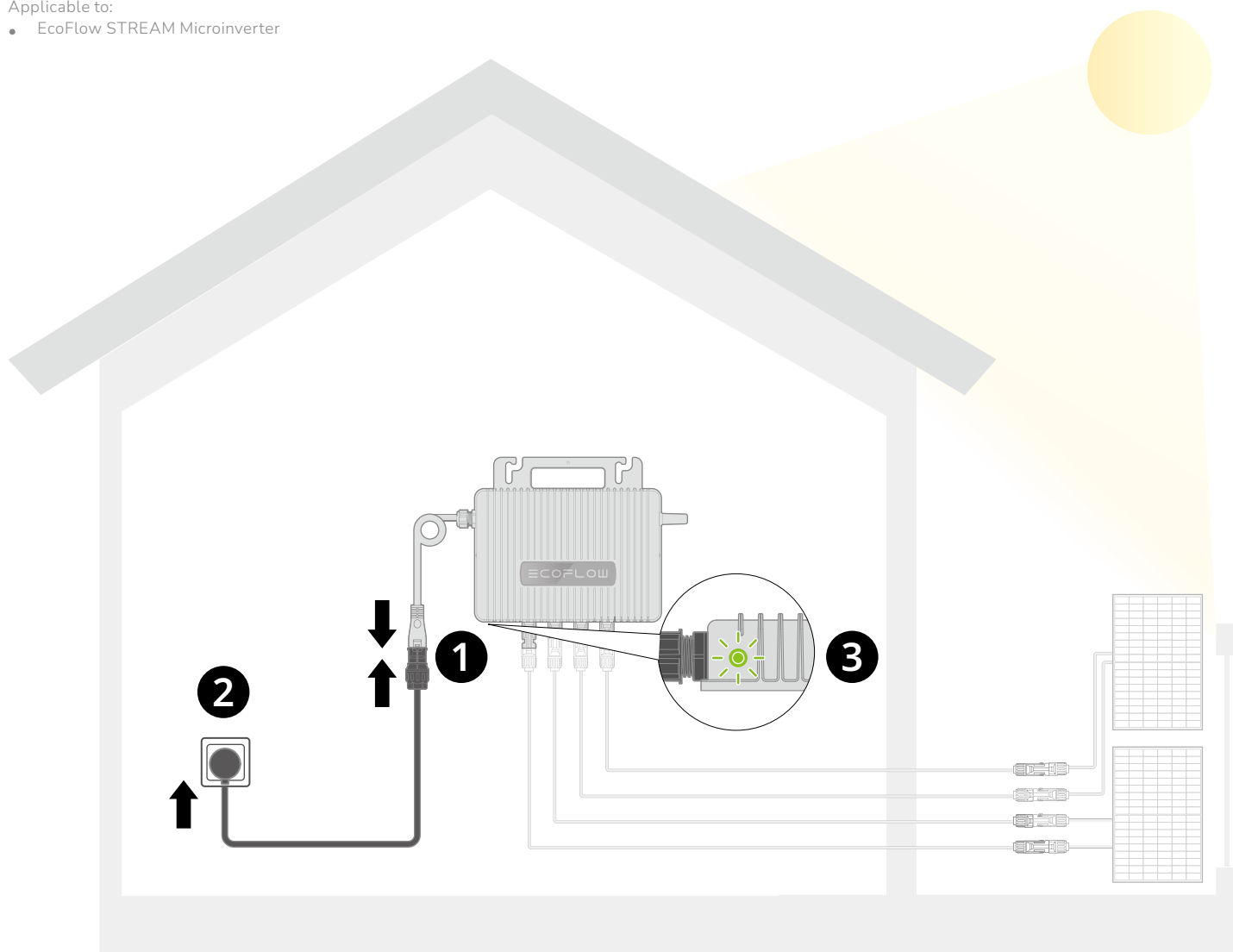


Applicable to:

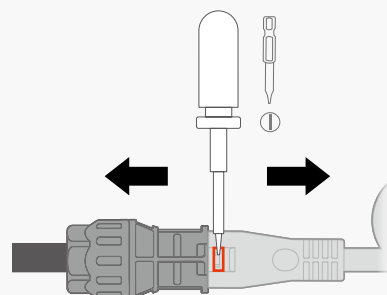
- EcoFlow STREAM Microinverter



- 4** Check the device status in the EcoFlow app to ensure that the connection is correct and secure.

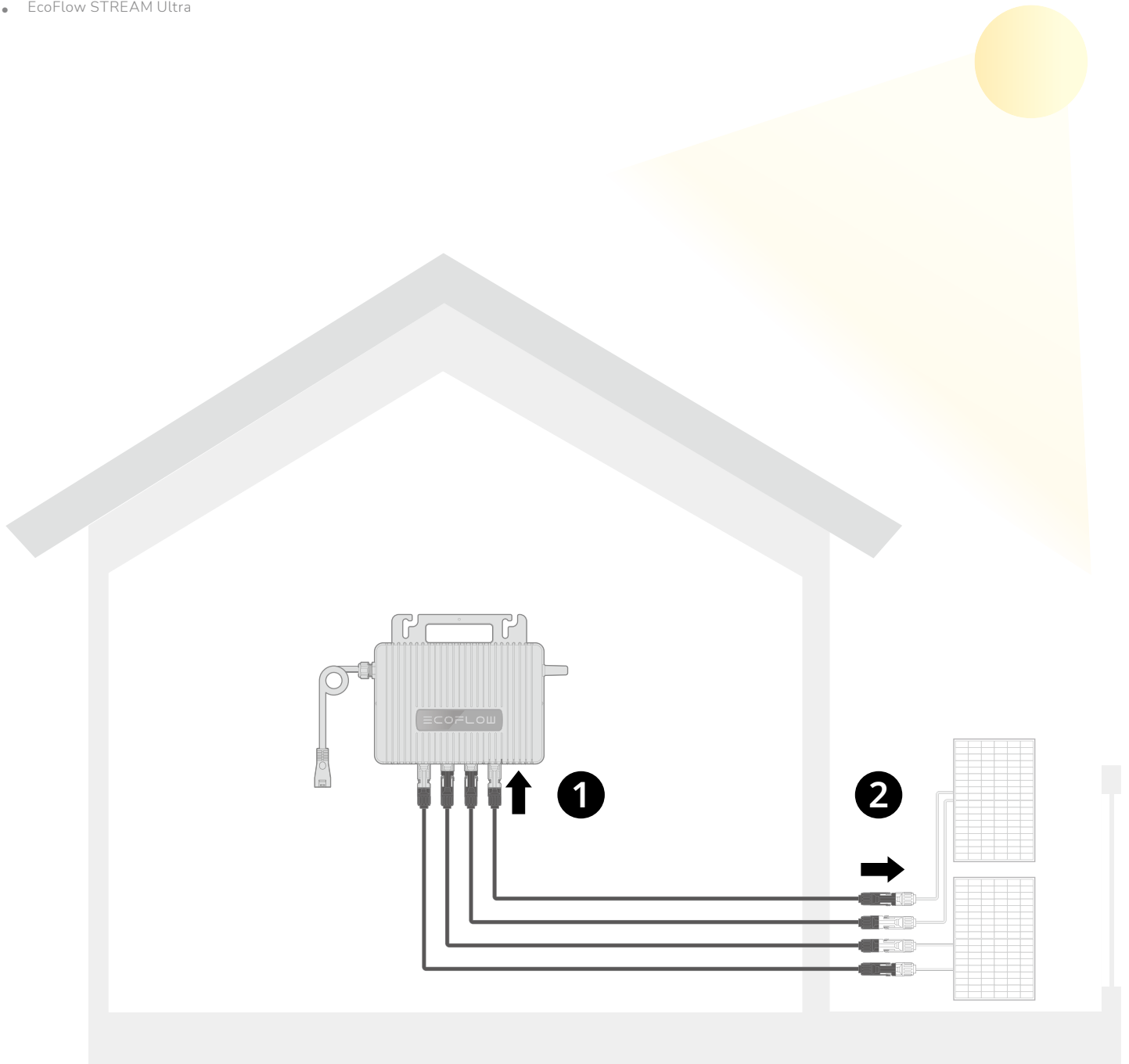


To reconnect the AC connector, press down the clip with a slotted screwdriver and pull the connectors apart.

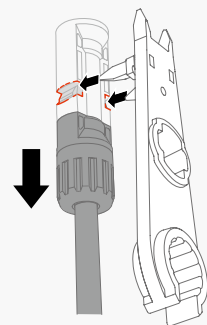


Applicable to:

- EcoFlow STREAM Microinverter (used as the example product in this guide)
- EcoFlow STREAM Pro
- EcoFlow STREAM Ultra



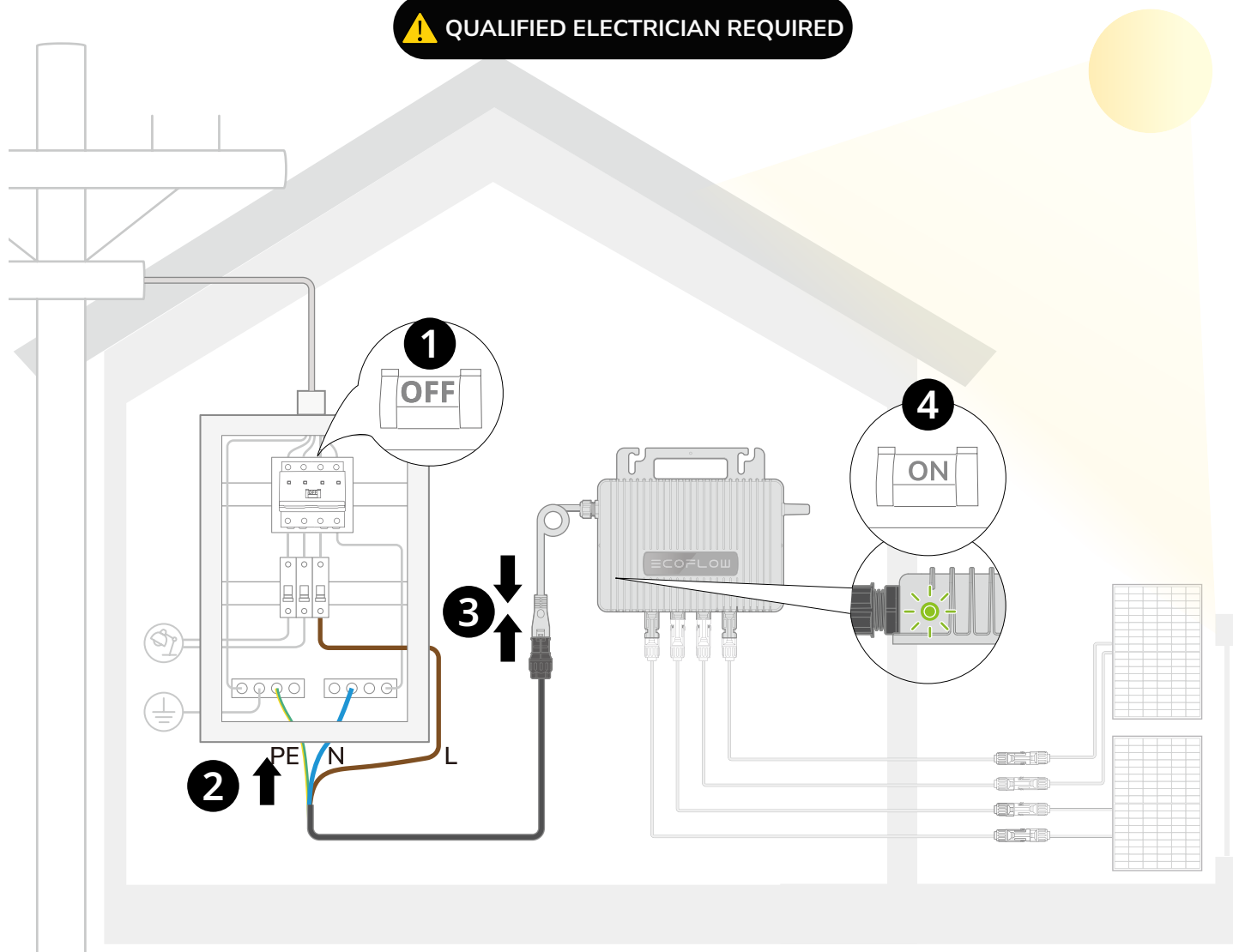
- Connect the cable to the PV terminal of your STREAM device. The actual number of cables depends on your solar connection needs.
- Never connect the leads of a solar panel to different PV terminals (e.g., negative to PV1- and positive to PV2+) to prevent short circuits.
- To reconnect the PV terminals, use a PV wrench and pull the connectors apart.



Applicable to:

- EcoFlow STREAM Microinverter

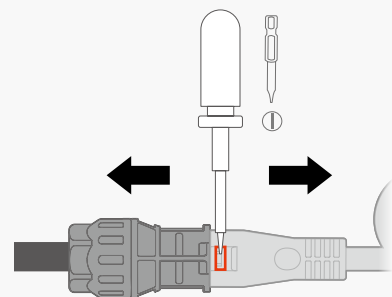
**⚠ QUALIFIED ELECTRICIAN REQUIRED**



- 5** Check the device status in the EcoFlow app to ensure that the connection is correct and secure.



To reconnect the AC connector, press down the clip with a slotted screwdriver and pull the connectors apart.



Applicable to:

- EcoFlow STREAM Microinverter

