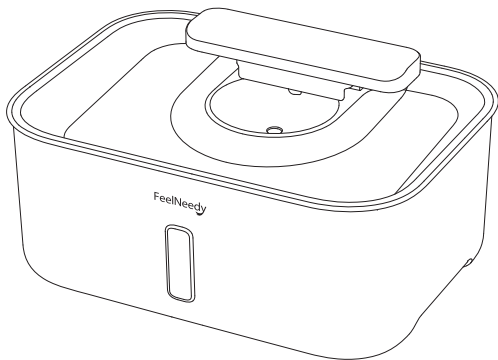


FeelNeedy

USER MANUAL

FN-W13 Pet Water Fountain



Product Specification

Name: Pet Water Fountain

Model: FN-W13

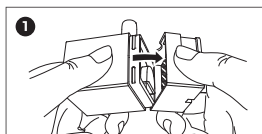
Rated voltage/current: 5V \approx 1A

Size: 388mm*281mm*160mm

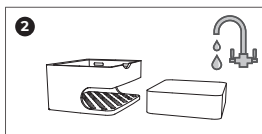
Net weight: 1.82kg

Main material: Stainless Steel & ABS

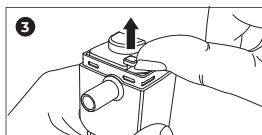
Pump Cleaning



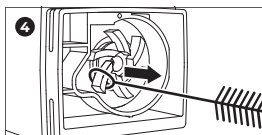
Remove the cover of the pump and take out the sponge.



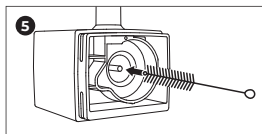
Clean the sponge.



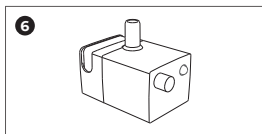
Remove the cap of the impeller.



Take out the impeller with tools.

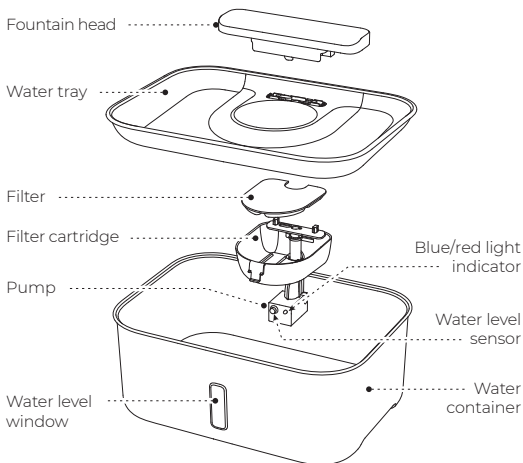


Thoroughly clean all parts with the small brush and wash the inside of the water pump.



Finish and install the water pump.

Overview



What's included



Water Fountain



Filter



Brush



Pump filter
sponge



User
manual

Installation Steps

Step1 Clean the components

1. Before installing or replacing the filter, immerse it in clean water for 5 minutes, then rinse it to clean (to remove floating carbon generated by activated carbon during transportation).
2. Rinse the stainless steel water tray, water container and pump with clean water.

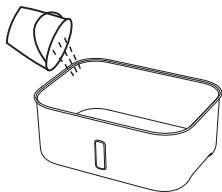
Tips:

- * Never use water above 50 °C.
- * Never use dishwashers or disinfection cabinets to clean the components.

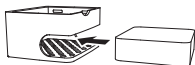


Step 2 Assemble the product

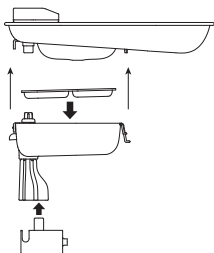
1. Pour clean drinking water into the water container, keep the water level under max level.



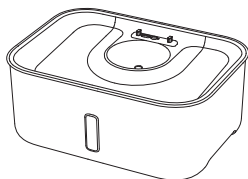
2. Install the water pump sponge.



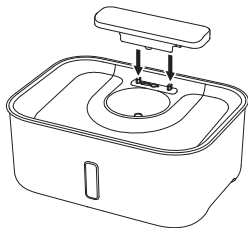
3. Put the filter into the Filter cartridge and connect the pipe with the pump.



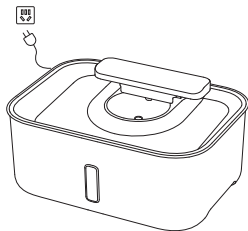
4. Put the stainless steel water tray onto the Water container.



5. Insert the faucet into the corresponding hollow space.



6. Connect the power adapter.



Indicator light reminder:

when the water level is normal, the blue light will be on for a long time; when the water level is below the minimum water level line, the red light will be on for a long time.

Maintenance and Cleaning

1. Disconnect power supply and turn off the product before cleaning, keep the charging port dry.
2. Take out the pump, pump filter sponge, filter, stainless steel tray and rinse them with clean water.
3. After cleaning, wipe the charging port clean before connecting power.
4. It's recommended to replace filter and water pump sponge every 20-30 days, and wash them every week.
5. For the health of your pets, please change the filter and water pump sponge frequently according to the actual use condition.

Notes

1. For indoor use only.
2. Do not clean USB port, use a clean cloth to wipe it.
3. Keep the pet fountain horizontally. Do not knock it over.
4. Please keep your pet away from the wires to avoid electrical hazards from chewing.
5. Please make sure children have adult supervision when operating this product.
6. Please do not fill with hot water.
7. Please use official accessory. We are only responsible for the function and safety of official accessory.
8. To provide better product, we will be continuously making improvement.
9. The picture is for reference only. Please be subject to the actual products.

Troubleshooting

Q: With blue indicator, the water pump has no water flow out?

A: The water pump may be blocked, if so, clean it thoroughly. Or the water tube is not connected tightly.

Q: With red indicator, the water pump has no water flow out?

A: The water is insufficient or near the lowest water level. Or it is necessary to disassemble the water pump to wash it thoroughly and clamp out the impeller to clean it.

Q: Why does the pump make abnormal noise during use?

A: The small foreign objects may have entered the water pump. Disassemble and wash the water pump and reinstall it.

Q: How often should I change the filters? where to get them?

A: It's recommended to replace the filters every 20-30 days. Please contact us at **service@feelneedy.com** to purchase new filters.

Q: Water output speed slows down.

A: For the first use (or reuse after long-time storage), the water pump needs to discharge air, it's normal if the water output speed slows down. Or disassemble and thoroughly wash the water pump.



Made in China

QC PASSED



For FAQs and more
information, please scan



Lifetime Warranty Code

241017

✉ support@feelneedy.com

