

onn.™

Glass Screen Protector  
with Built-in  
Microbial Protection  
Quick Start Guide

Cleaning

Remove the case from your device to avoid interference with application.

Clean the Screen

01

Clean the device screen with the wet wipe.



Dry the Screen

02

Dry with the microfiber cloth. Ensure the screen is completely dry before proceeding.



Remove Dust

03

Use the dust removal sticker to remove any fine particles from the device screen.



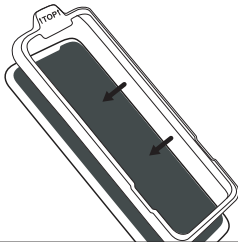
Application Tray

Apply the Tray

04

Snap the orange application tray over the front of your device.

**Tip:** Be sure the edge labeled “Top” is at the top of your device.



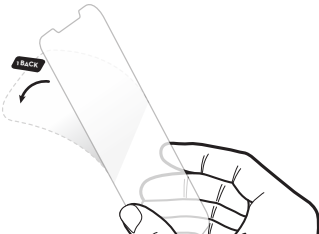
Screen Protector Application

Remove Safety Film

05

Using the tab labeled “1-Back”, peel away to expose the adhesive, removing completely.

**Note:** Do not touch adhesive on the glass.

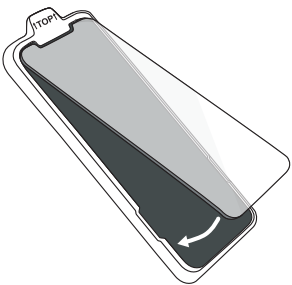


continued on the back

Place the Screen Protector

06

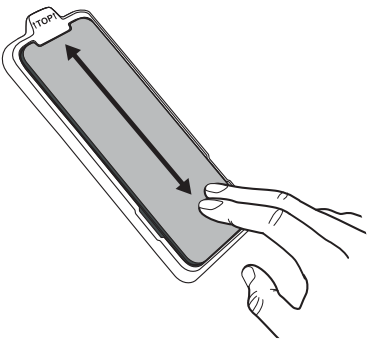
With the adhesive facing your device place the screen protector down into the tray. Align the top edge of the glass and allow the glass to position itself into the tray.



Attach the Screen Protector

07

Press firmly down along the center to adhere the screen protector.

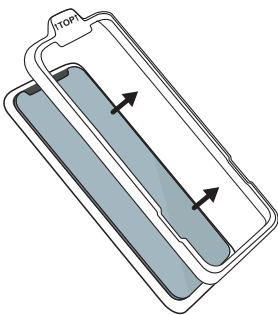


Final Steps

Remove the Tray

08

Carefully remove the application tray.



Remove Air Bubbles

09

If there are any air bubbles, remove them by starting from the center and pushing firmly outward toward the edges.

**Note:** Small bubbles may dissipate over the next 48 hours.

