

# **Sainlogic Smart Weather Station**

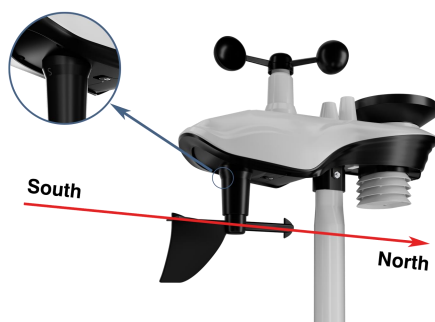
## **Quick Setup Guide**

**Model : SA7**



# Sainlogic-SA7

## Quick Setup Guide



### Product Includes:

- Integrated outdoor transmitter
- Gateway
- Rain collector
- Wind Cups
- Wind vane
- Mounting brackets and accessories
- Instruction manual
- Power Adapter

### Recommended Tools:

- Precision screwdriver (for small Phillips screws)
- Compass or GPS (for wind direction calibration)
- Adjustable wrench

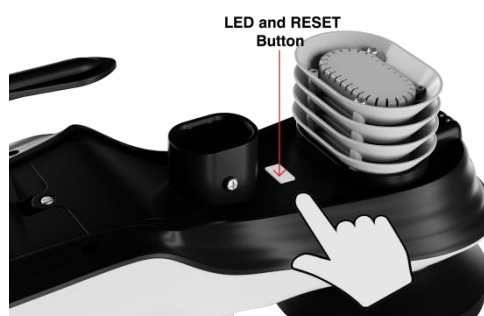
### Step 1:

Locate the battery door on the bottom of the transmitter, remove the retaining screws on the back of the sensor, remove the battery door, insert 3 new AA batteries and close the battery door.



### Step 2:

After installing the batteries, the Integrated Outdoor Sensor LED will illuminate for 3 seconds and then blink every 16 seconds. If it does not flash, press the **reset** button.



### Step 3 (Pairing mode) :

1. Plug in the device with the power adapter.
2. Please press and hold the **"Pair"** button for 3 seconds to enter the Pairing mode, the indicator light (red) flashes fast, the indicator light (red, green) will flash alternately after successful pairing.



**Note:** You need to check if the device is online in the "Weatherseed" app.

Referring to the instructions on the following page.

Learn how to make the gateway connect to WiFi and how to download the "Weatherseed" APP and register to log in.



3. If the gateway is in pairing status, one click to exit pairing mode.

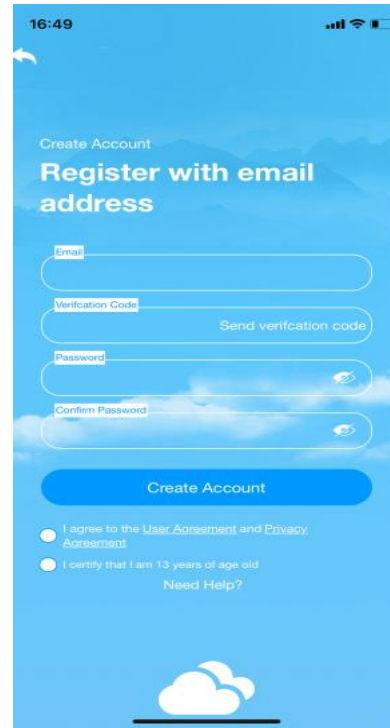
**Step 4:**

Please search "Weatherseed" APP in Google Play Store or IOS App Store.

**Step 5:**

Register and login to your own Weatherseed account:

- (1) Fill in the e-mail address;
- (2) Send a verification code to the e-mail address and enter the code;
- (3) Set a password;
- (4) Confirm the password (must be consistent with the set password);
- (5) Check the user agreement and proof of age;
- (6) Register account.




 **Note:**

***The weather station only supports 2.4 GHz signals. If you have a dual-band router (2.4 GHz and 5.0 GHz), make sure the router's 2.4 GHz band is turned on. And separate it from the SSID of the 5.0 GHz channel for accurate connection to 2.4 GHz.***

**Step 6: WiFi Connection Steps (3 steps)**

 **Note :** ***The power adapter needs to be plugged into connect to WiFi.***

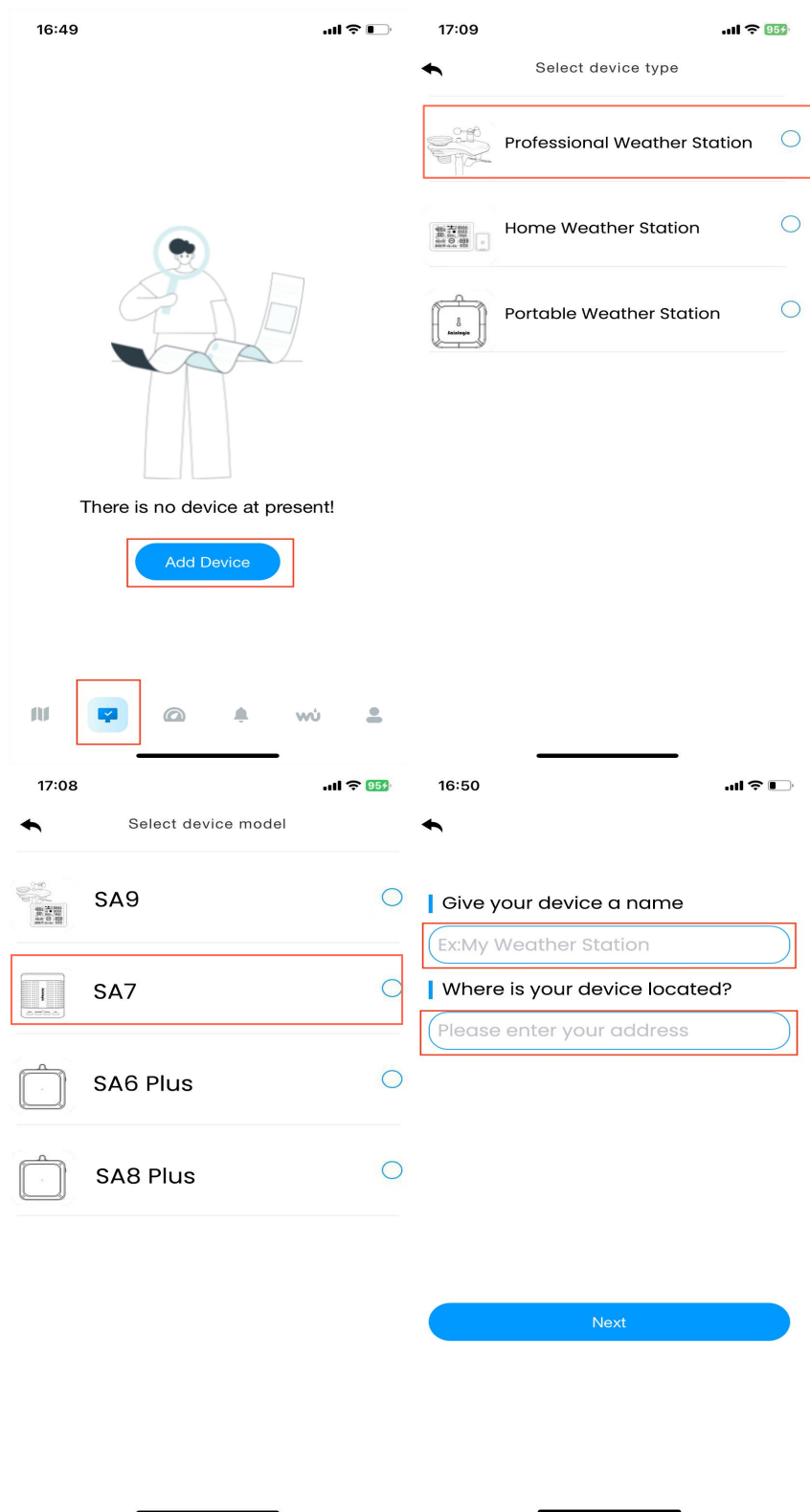
***Battery power cannot connect to WiFi.***

 **Note :** ***Please don't choose the wrong type and model , if you choose the wrong one, you can't match the network successfully.***

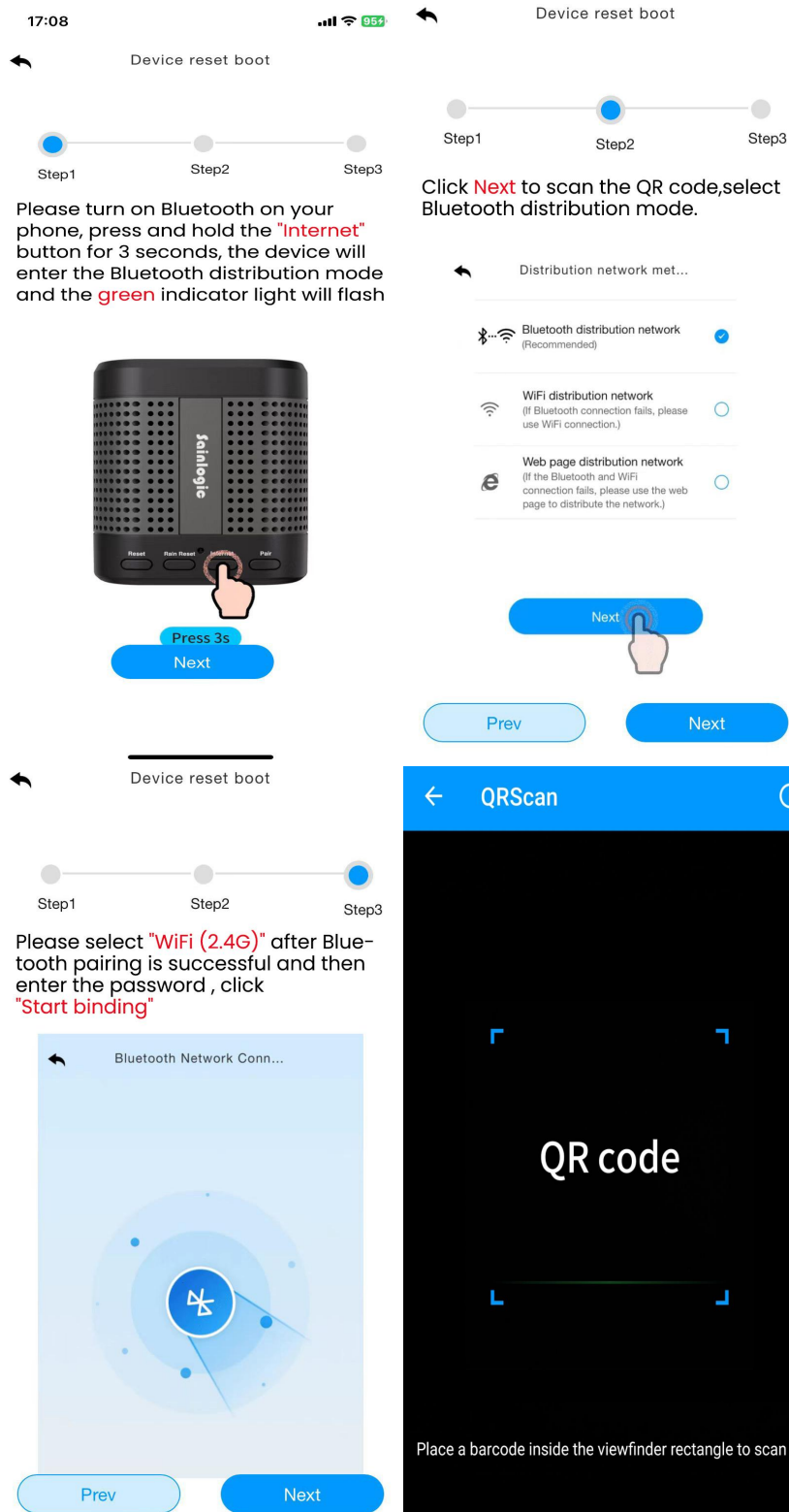
**1. Bluetooth Distribution Network Mode(Recommend)**

Please press and hold the “Internet” button for 3 seconds, the device will enter the network mode. By default, the first network mode is “Bluetooth distribution network” mode, the indicator light (green) blinks about 0.5s kind of blinking once.

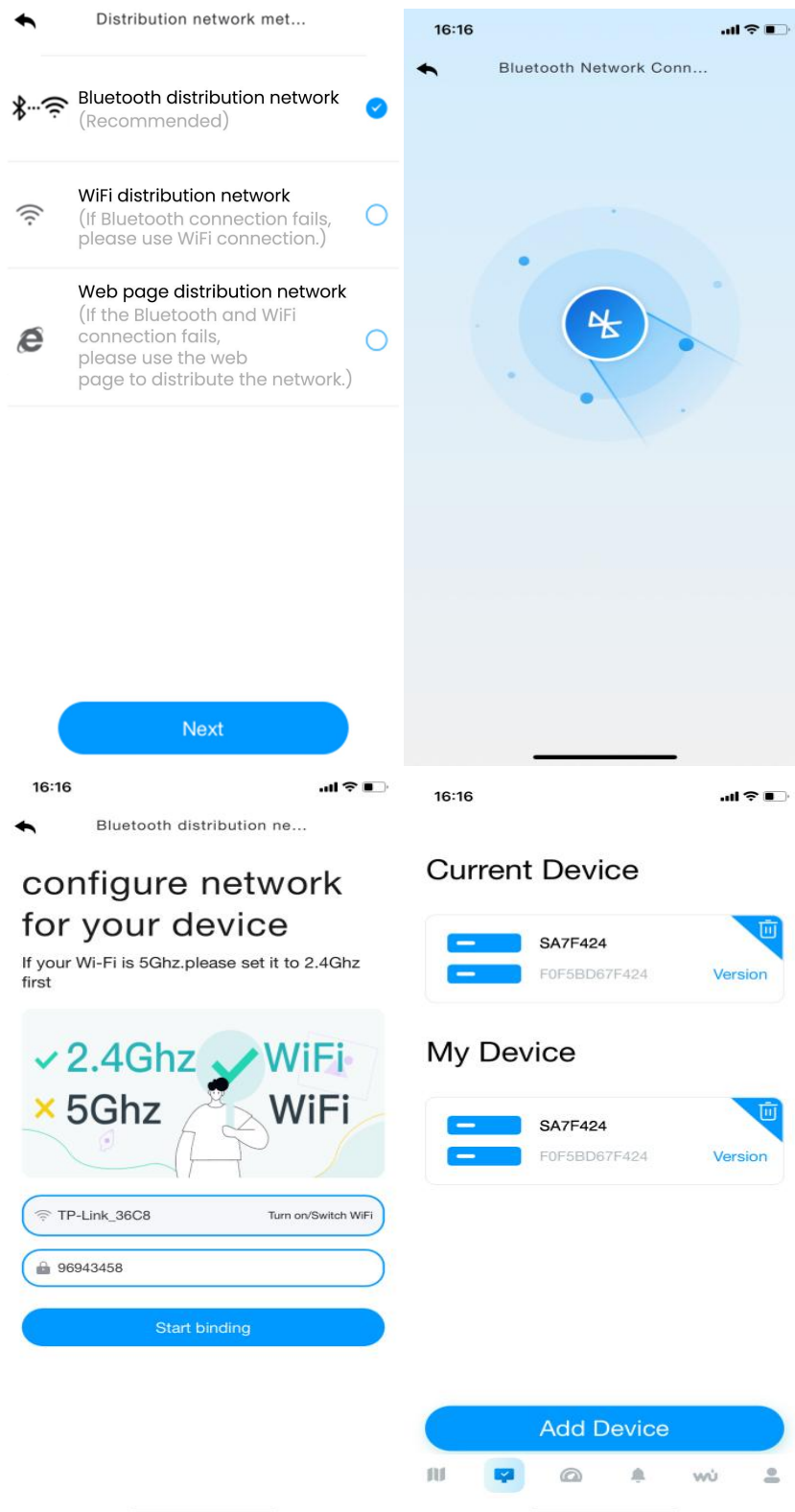
- (1) Select product model. Set the name and location by yourself;



(2) Follow steps 1 through 3 for WiFi connectivity, scan the QR code and then select the distribution method.



(3) Select the "Bluetooth distribution network" to automatically search for Bluetooth signals and pairing. After successful pairing, jump to WiFi interface. Please select 2.4Ghz WiFi and enter the password.



## 2. WiFi Distribution Network Mode

Please press and hold the **“Internet”** button, the device will enter the “Bluetooth distribution network” mode. Then please long press the the **“Internet”** button again for at least 3 seconds, the device will enter “WiFi distribution network” mode, the indicator light (green) will blink once in 1s.

After the gateway enters the “WiFi distribution network” mode, please open the APP to start networking:

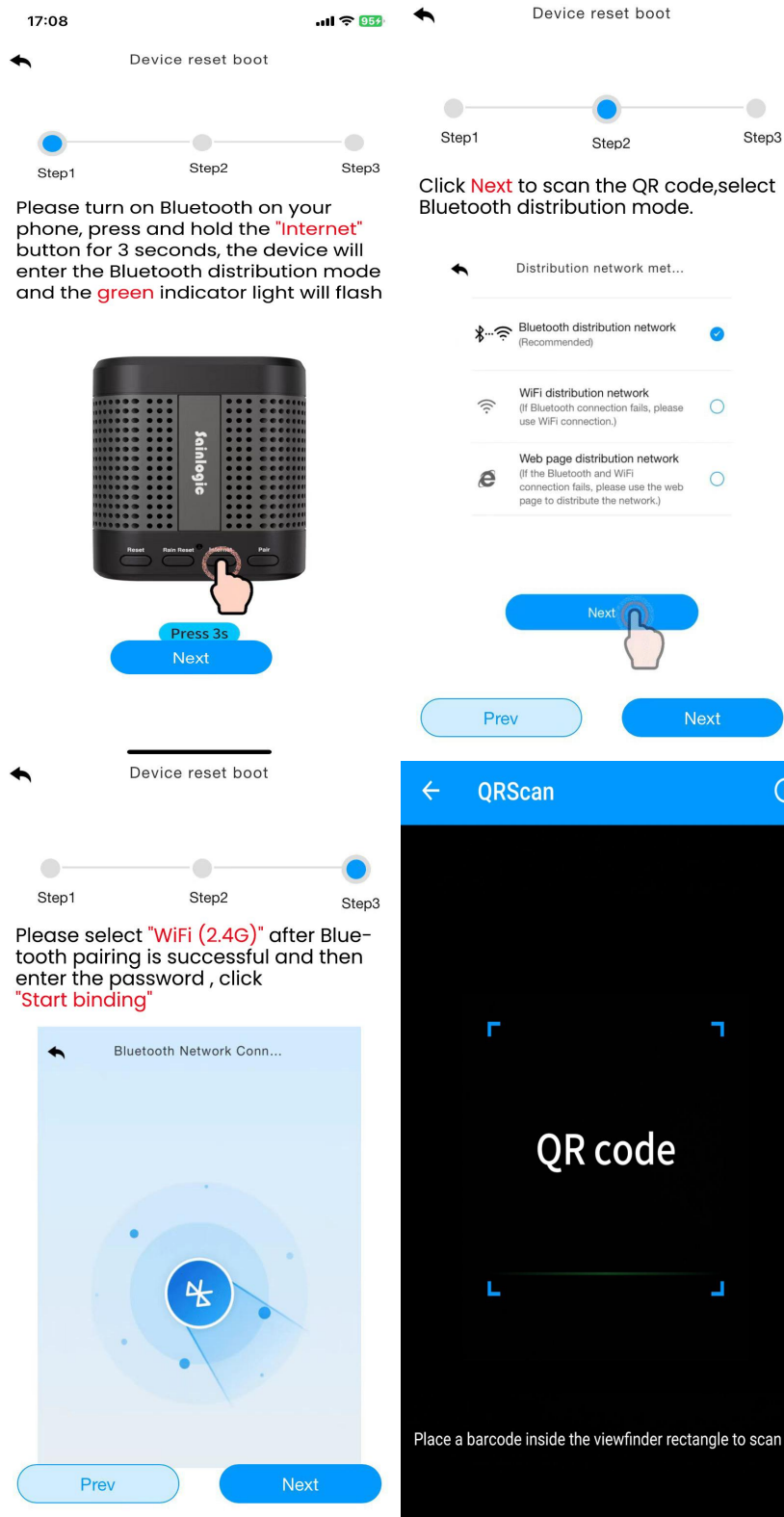
(1) Select product model. Set the name and location by yourself;

The image shows two screenshots of a mobile application interface for selecting a weather station device.

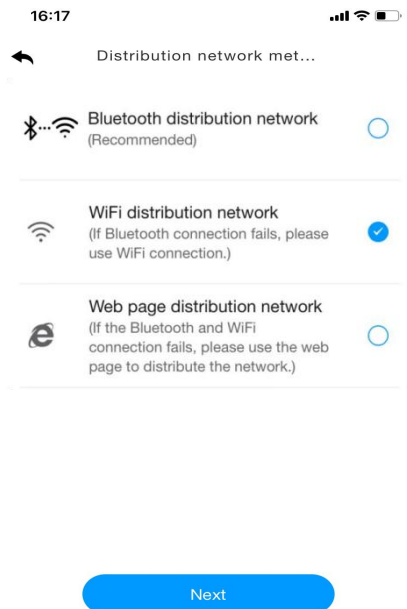
**Top Screenshot (16:49):** The screen displays a list of device types under the heading "Select device type". The options are "Professional Weather Station", "Home Weather Station", and "Portable Weather Station". The "Professional Weather Station" option is highlighted with a red box. Below the list, there is a message "There is no device at present!" and a blue button labeled "Add Device".

**Bottom Screenshot (16:50):** The screen displays a list of device models under the heading "Select device model". The options are "SA9", "SA7", "SA6 Plus", and "SA8 Plus". The "SA7" option is highlighted with a red box. To the right of the list, there are two prompts: "Give your device a name" with a text input field containing "Ex: My Weather Station", and "Where is your device located?" with a text input field containing "Please enter your address". Both input fields are highlighted with red boxes. At the bottom of the screen, there is a blue button labeled "Next".

(2) Follow steps 1 through 3 for WiFi connectivity, scan the QR code and then select the distribution method.



(3) Choose the "WiFi distribution network" mode, select the router WiFi name (2.4Ghz), then enter the password and click "Next".

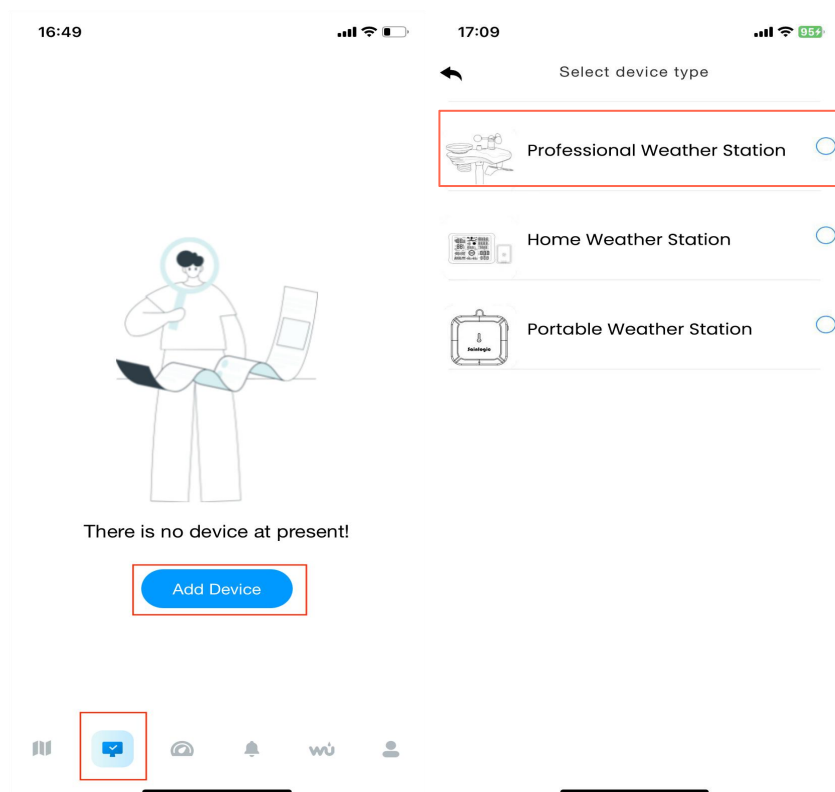


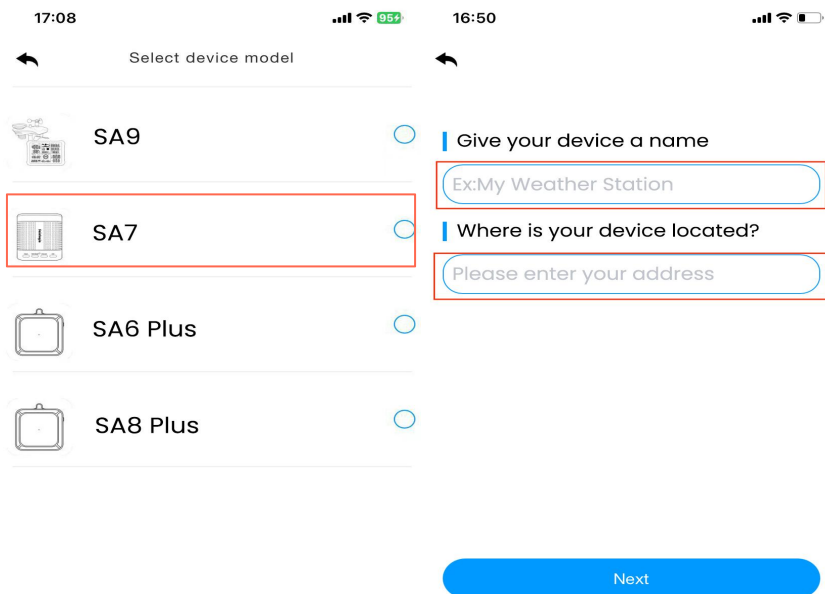
### 3.Web page distribution network mode

Please press and hold the “Internet” button to enter the distribution network mode, the device will enter “Bluetooth distribution network” mode. Then please long press the “Internet” button again for at least 3s, the device will enter “WiFi distribution network” mode. In “WiFi distribution network” mode, press and hold again for 3s to enter the “Web page distribution network” mode, the indicator light (green) will blink once in 2s.

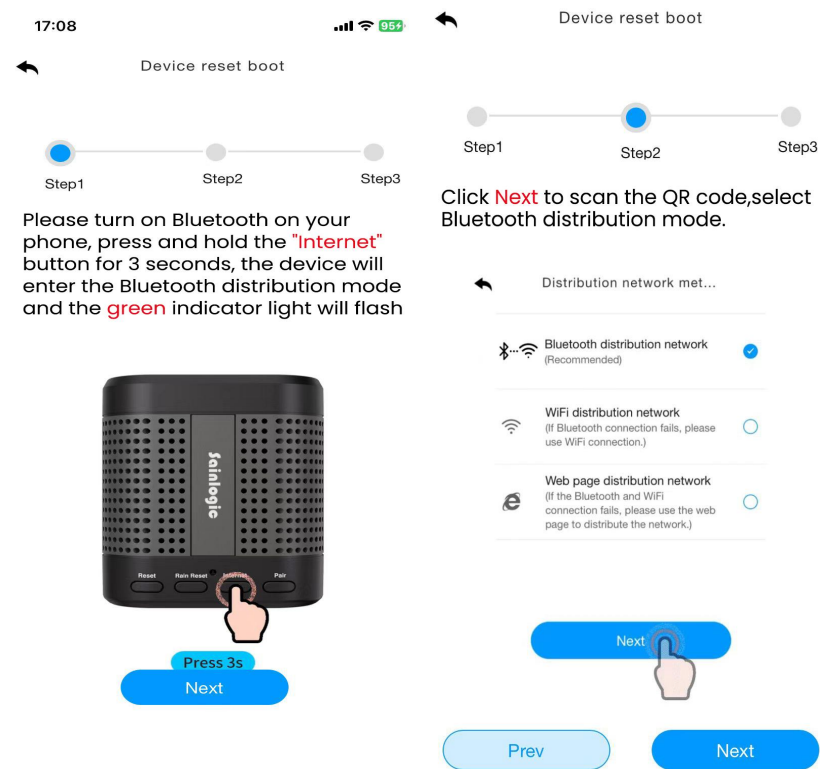
After the gateway enters the “Web page distribution network” mode, please open the APP to start networking:

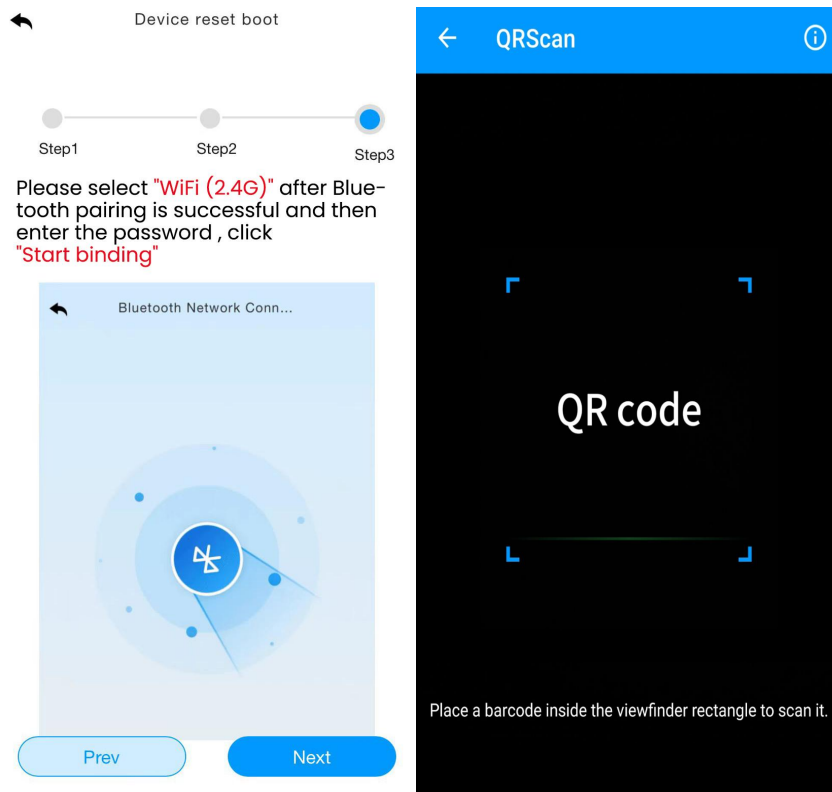
(1) Select product model. Set the name and location by yourself;





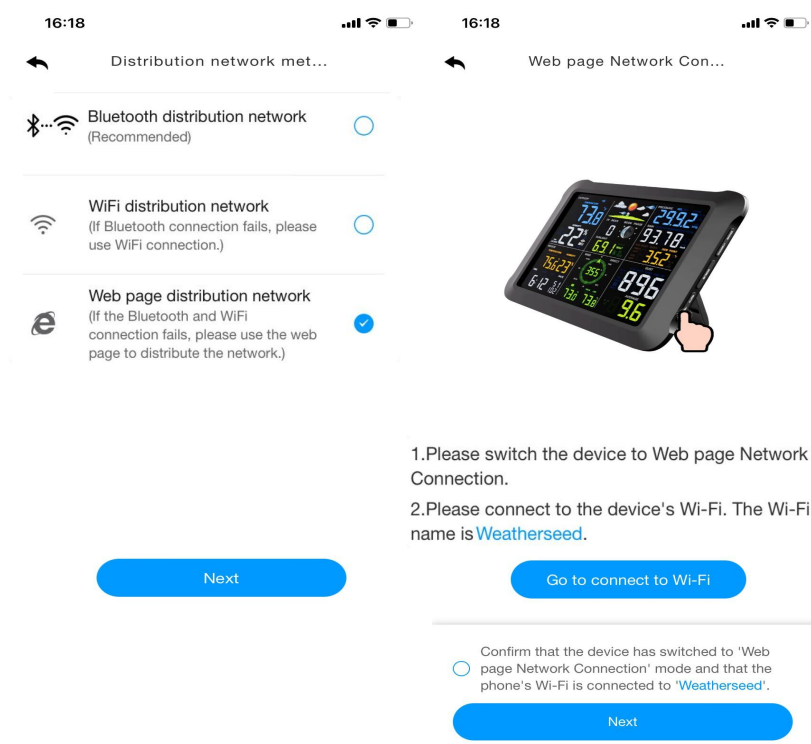
(2) Follow steps 1 through 3 for WiFi connectivity, scan the QR code and then select the distribution method.

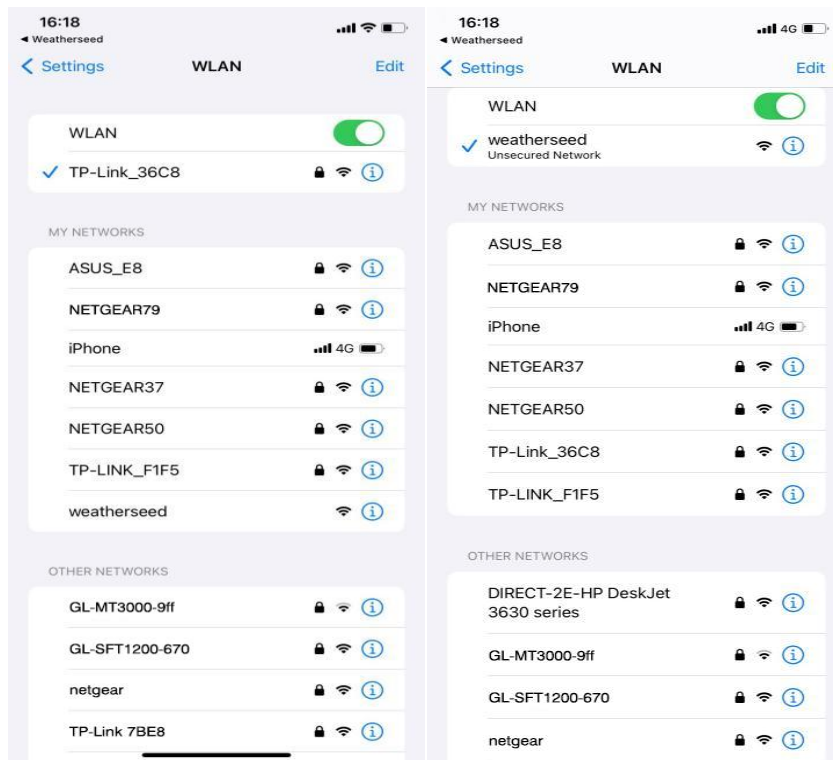




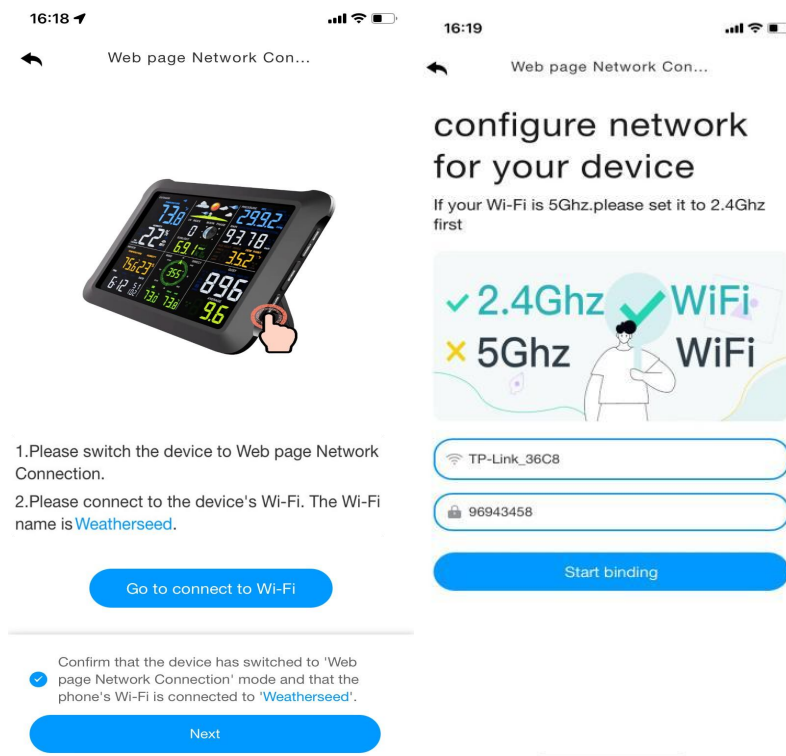
(3) Choose the " Web page distribution network" mode. Click Go to connect to WiFi.

Automatically jump to the WiFi list screen, click Connect " weatherseed " WiFi.





(4) Return to the app, click the confirmation dot and click "Next". Please select 2.4Ghz WiFi, enter the password and click "Connect".



 **Note:** Android system can select WiFi. IOS system needs to manually enter the WiFi name.

If you have any questions, please feel free to contact us. You can reach us via

Customer Support Email, Customer Support phone, or social media accounts.

Customer Support Email: [info@sainlogic.com](mailto:info@sainlogic.com)

Website: [www.sainlogic.com](http://www.sainlogic.com)

Customer Support Phone: +1 (888) 513-9823 (Mon-Fri 10 a.m. - 6 p.m, Eastern Standard Time)

YouTube:

<https://www.youtube.com/@sainlogicbrand>

Facebook:

<https://www.facebook.com/sainlogicofficial>

Instagram:

[https://www.instagram.com/sainlogic\\_official/](https://www.instagram.com/sainlogic_official/)

Twitter:

<https://twitter.com/sainlogicbrand>

TikTok:

<https://www.tiktok.com/@sainlogic>

