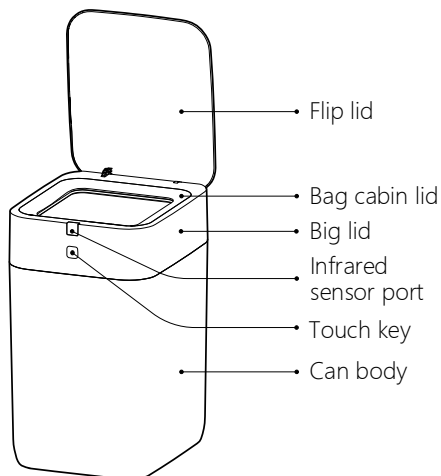
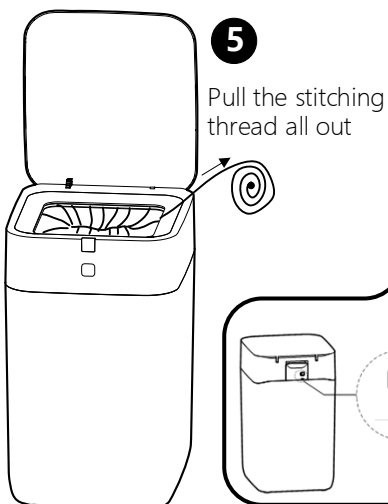
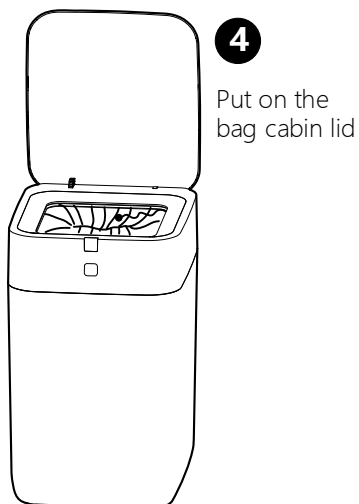
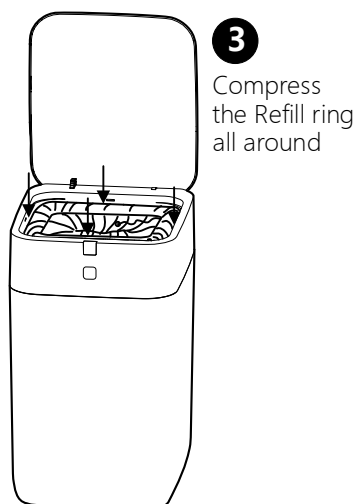
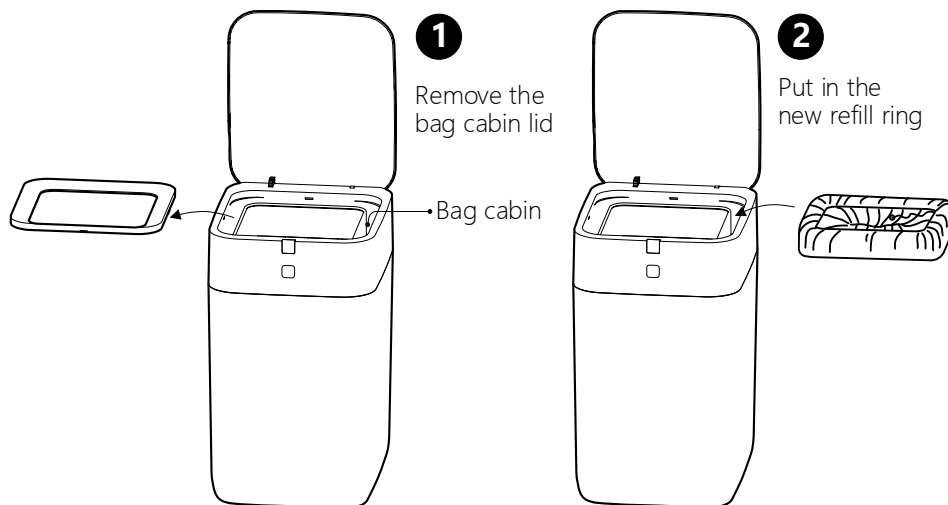


Airdeer Automatic Trash Can Quick Start Guide

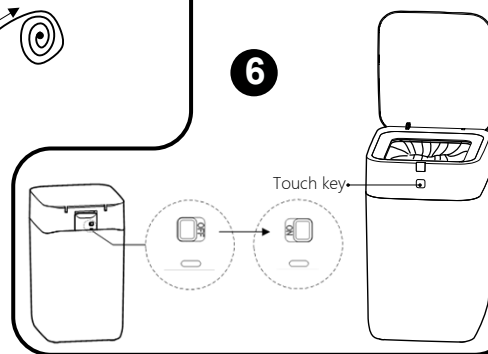
Part names and locations



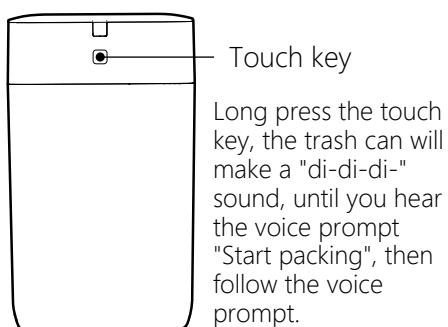
Install the refill ring



Turn on the power switch, or long press the touch key to complete auto bag loading



Auto packing and bag changing



Open the flip lid

Methods to open the flip lid:
One is to take the garbage into the sensing area, the other is to bend the knee slightly and enter the sensing area

