

说明书

Waterdrôp

Read this manual before using and keep it for future reference.

King Tank

Gravity-Fed Water Filter System

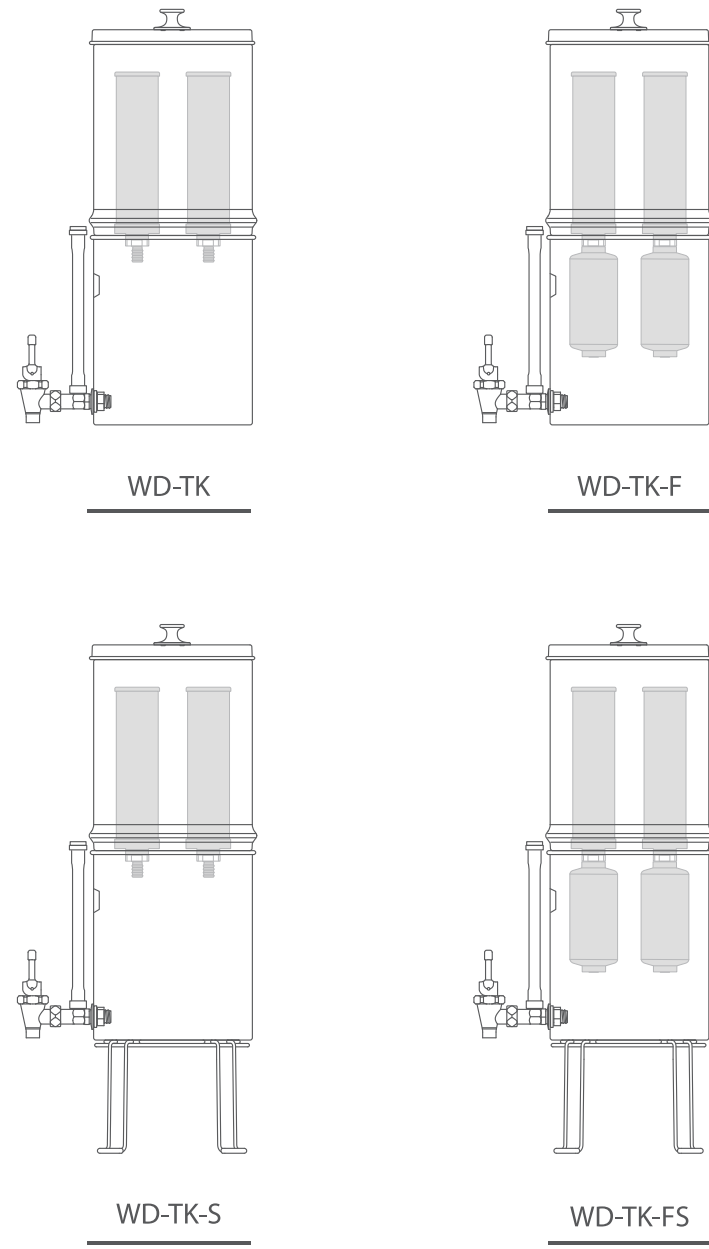
User Manual

System Model List

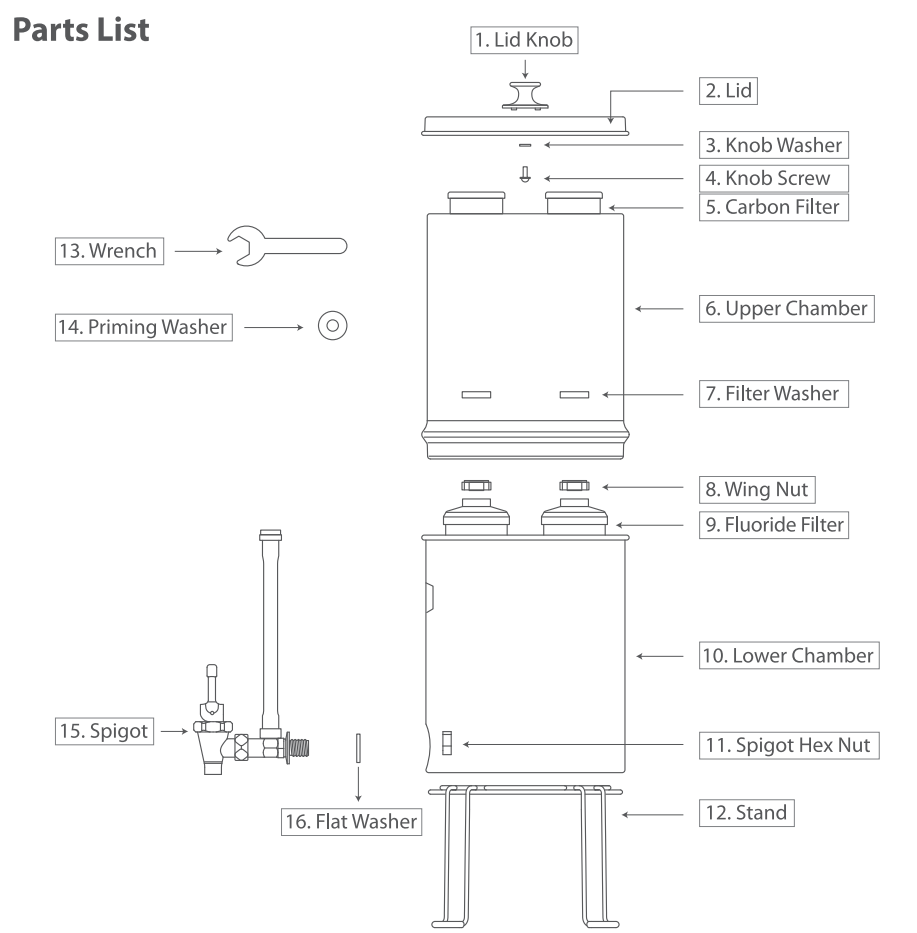
WD-TK WD-TK-F
WD-TK-S WD-TK-FS



Product Overview



Parts List



* 1, 3 and 4 have been pre-assembled together; 5, 7 and 8 have been pre-assembled together; 11, 15 and 16 have been pre-assembled together.

| Items | WD-TK | WD-TK-F | WD-TK-S | WD-TK-FS |
|--------------------|-------|---------|---------|----------|
| Lid | | | | |
| Lower Chamber | | | | |
| Upper Chamber | | | | |
| Water Level Spigot | | | | |
| Carbon Filter*2 | | | | |
| Fluoride Filter*2 | | | | |
| Stand | | | | |

Prior to assembling the water purification device, it is necessary to clean it completely. Before cleaning the components, please wash your hands. (It is important not to clean the carbon and fluoride filters so as to prevent contamination during the assembly process.)

Product Specifications

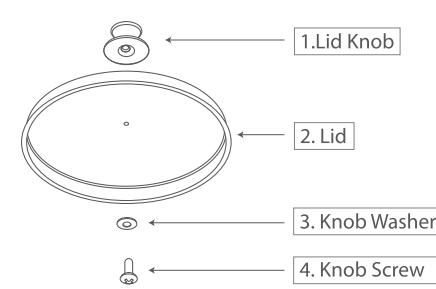
| | |
|--------------------------|--------------------------------|
| System Model | WD-TK/WD-TK-F/WD-TK-S/WD-TK-FS |
| Carbon Filter Capacity | Up to 6,000 gallons in total |
| Fluoride Filter Capacity | Up to 1,000 gallons in total |
| Operating Temperatures | 40-100 °F (4-37 °C) |
| System Capacity | 2.25 gallons |

Installation Instructions

Step 1-Lid Knob Assembly

Insert a Lid Knob (1) into a Lid (2) and secure it with a Knob Screw (4). (Figure 1)

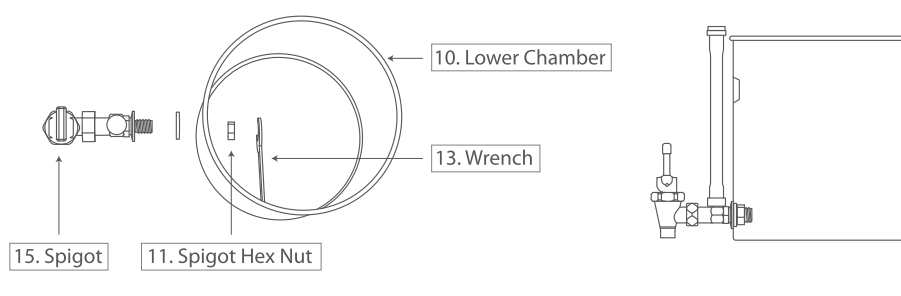
Figure 1



Step 2-Spigot Assembly

Insert a Spigot (15) into the hole on one side of the Lower Chamber (10), and tighten a Spigot Hex Nut (11) with an attached Wrench (13). (Figure 2)

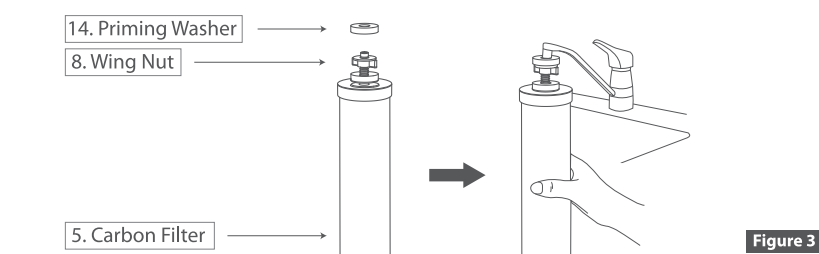
Figure 2



Step 3-Flush Filters

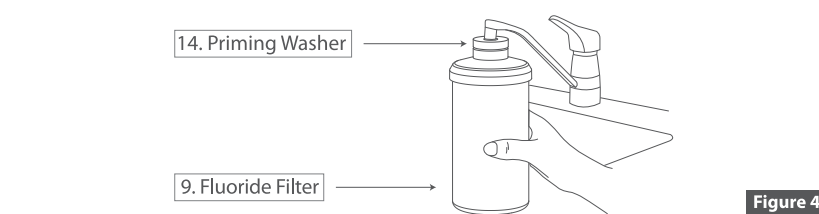
Carbon Filter (Figure 3)

1. Soak filter for 60 seconds before priming. Loosen the Wing Nut (8) to the top position, leaving enough space to hold the Priming Washer (14) in place, and screw the Priming Washer (14) above the Wing Nut (8).
2. Attach the Carbon Filter (5) to the water outlet of your faucet to form a tight seal with the Priming Washer (14); if the tight seal fails, adjust the Wing Nut (8) upwards again.
3. Flush the Carbon Filter (5) for at least 60 seconds or until the water runs clear.



Fluoride Filter* (Only applicable to WD-TK-F/WD-TK-FS)

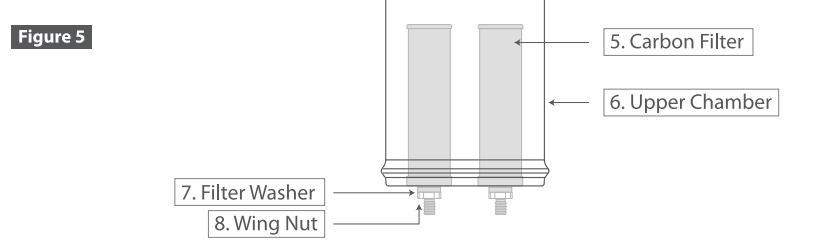
Attach the Fluoride Filter (9) to the water outlet of your faucet, making a tight seal with the Priming Washer (14), and flush the Fluoride Filter (9) for at least 120 seconds or until the water runs clear. (Figure 4)



Step 4-Filter Installation

Carbon Filter Installation (Figure 5)

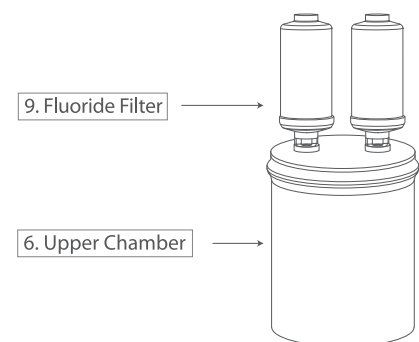
Insert the threaded rod of each Carbon Filter (5) into a hole in the upper chamber (6) and secure it with the Filter Washer (7) and the Wing Nut (8) sequentially.



Fluoride Filter Installation * (Only applicable to WD-TK-F/WD-TK-FS)

Place the Upper Chamber (6) upside down, and screw each Fluoride Filter (9) with the "N" indicator to the threaded rod of the corresponding Carbon Filter (5). Flip the Upper Chamber over for installation. (Figure 6)

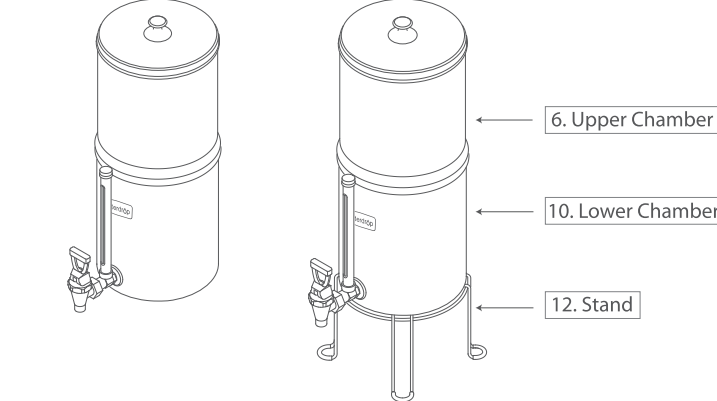
Figure 6



Step 5-Upper and Lower Chamber Assembly*(*) denotes optional)

Place the Upper Chamber (6) gently into the Lower Chamber (10), cover it with the Lid, and put the Lower Chamber (10) onto the Stand (12). The Stand (12) is only applicable to WD-TK-S/WD-TK-FS. (Figure 7)

Figure 7



Step 6-Flush the Filtration System

Fill the Upper Chamber (6) with water, then empty the first bucket into the Lower Chamber (6) and repeat the process. You can drink water from King Tank after flushing it 2-3 times.

NOTE: Do not use with microbiologically unsafe or unknown quality water without adequate disinfection before or after the system.

Operation and Use Tips

1. Check that the spigot (15) is closed during the first operation and after each re-priming.
2. The height of the water level in the lower chamber is indicated by the red ball in the water level tube. Fill the upper chamber with water to the height of the floating ball, if the red ball is at its highest point, do not add water.
3. If you intend to leave your system unused for more than three days, empty both the upper and lower chambers, remove all filtration elements, and let the components dry.
4. Do not use with microbiologically unsafe or unknown quality water without adequate disinfection before or after the system.

Maintenance

1. The whole system should be cleaned at least once a month.

- Before cleaning the chambers with water and dish soap, remove the filter cartridges, spigots, and other attached components.

NOTE: If the cleaning water contains viruses or bacteria, add 16 drops of bleach per gallon of water. Remove all parts and attachments before cleaning the stainless-steel chambers in the dishwasher.

2. Storing the Filter

- Unused filters can be kept in their original packaging indefinitely. Do not store with scented items.
- Never put the filter in the freezer, and always re-flush it before using it again.

Frequently Asked Questions

Q: Why does the flow get slow?

- A: - To determine if the carbon filter have been successfully installed.
- If the filter produces microbubbles, please take it down, soak it in water for 10-20 seconds, and reinstall it.
- The filter's surface may become clogged with particulate matter, resulting in reduced water flow. Please replace the filter on a regular basis based on its lifespan.

Q: Why does my water filtration system leak where the upper and lower chambers meet?

A: There is not a water-tight seal between the upper and lower chambers of the system. Water can spill after the lower chamber is filled with water. Please pay close attention to water level change of the faucet.

Q: Why does the upper chamber still contain water after the filtering process ends?

A: It is normal for one to two inches of water to remain in the upper chamber. Because this system is gravity-fed, as the water level in the upper chamber drops, the filtering process naturally slows down because there is less water pressure available to force water through the elements.

Q: Why is filtered water in the lower chamber cloudy?

A: Cloudy water may indicate that filters still contain manufacturing dust and need to be flushed more thoroughly. If the water filtering through the filters remains cloudy, contact Customer Service at 1-888-352-3558 (U.S.).

Q: Why is the TDS value not reduced after filtration?

A: Total Dissolved Solids (TDS) are the total amount of mobile charged ions dissolved in a given volume of water, including minerals, salts, and metals. The gravity-fed water filter system filters out harmful substances while preserving beneficial minerals. If you are looking for water purifiers to reduce TDS, the RO water filtration system is the best option.

Q: My filtered water has an unexpected taste. What can I do?

- A. Follow the Carbon Filter Installation to ensure the filter is properly installed and filtering the water.
B. Flush the filter for another 1-2 mins.

NOTE: The fluoride removal test is carried out under the standard conditions of a third-party laboratory, and actual results may vary.

Warranty

The King Tank gravity-fed water filter system of Tank series comes with a 1-year warranty that covers defects in materials and workmanship from the original date of purchase. If the product proves to be defective within 1 year of purchase, call 1-888-352-3558 (U.S.). During the warranty period, we will replace or repair any part deemed defective if the product has not been tampered, altered, or misused after delivery and has not been repaired by the manufacturer. The product is not warranted against misuse, use in abnormal operation temperature conditions, conditions outside of the listed operating parameters, use in commercial operations, or any other way that is not specified in the owner's manual. Our obligation does not include transportation costs. We are not responsible for damage in transit, and any such claims must be made to the carrier by the customer. If you require service or have any questions about how to use your product, please contact us. We have a professional customer service team that will handle your issue quickly.

NOTE: This does not apply to any filter cartridge because the life expectancy varies depending on the quality of the incoming water.



System Certified by NSF/ANSI Standard 372 (all 23 tests)

Manufacturer Technical Support
Tel: 1-888-352-3558 (U.S.)
E-mail: C1@waterdropfilter.com



Made in China V050
Qingdao Ecopure Filter Co., Ltd.



印刷品技术要求

1. 工艺要求 ☒ 覆光膜 ☐ 覆亚膜 ☐ UV油 ☐ 吸塑油 ☐ 过油 ☐ 丝印 ☐ 镭射
2. 材质要求 105g双胶纸, 双面印刷
3. 颜色要求 单色
4. 版面要求 印刷品文字线条印迹清晰、无重影;印刷品套印准确无偏色、溢墨、指痕等;印刷品上层均匀、光亮、牢固无粘连;覆膜表面平整、无褶皱、光泽度好;纸张材质正确,切边整齐、压线深浅适中、洁净、无斑点和条纹。

⚠ 图像颜色请依据数码稿印刷
请不要擅自变更来稿件,如须修改,请联系伊可普做有关决定



青岛伊可普电器有限公司包装设计图纸

| | | | |
|--------|---------------------------------|------|----------|
| 品牌 | Waterdrop | 工厂型号 | ECF-7088 |
| 物料编码 | E3070207088A | 版本号 | V050 |
| 包材文件名称 | E3070207088A WD-TK-372-说明书-V050 | | |
| 尺寸规格 | 210*140mm | 页数 | |
| 设计负责人 | 张鑫龙 | 审核日期 | |

DCR变更
(变更日期+变更描述)

2023.4.18
更换UPC 372认证logo
2024.5.10
更改邮箱和logo