



Quick Start Guide

[AV Receiver](#)

VSX-1130-K

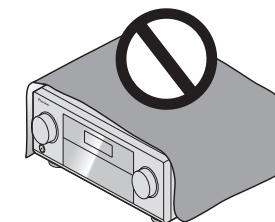
Thank you for buying this Pioneer product. This Quick Start Guide includes instructions for basic connections and operations to allow simple use of the receiver. For detailed descriptions of the receiver, see the "Operating Instructions" provided on the included CD-ROM (Ⓢ).

VENTILATION CAUTION

When installing this unit, make sure to leave space around the unit for ventilation to improve heat radiation (at least 40 cm at top, 10 cm at rear, and 20 cm at each side).

WARNING

Slots and openings in the cabinet are provided for ventilation to ensure reliable operation of the product, and to protect it from overheating. To prevent fire hazard, the openings should never be blocked or covered with items (such as newspapers, table-cloths, curtains) or by operating the equipment on thick carpet or a bed.



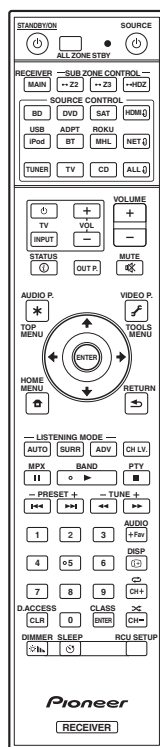
D3-4-2-1-7b*_A1_En

CAUTION

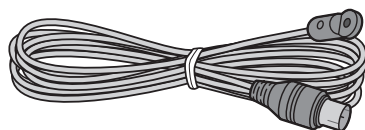
- Do not use or store batteries in direct sunlight or other excessively hot place, such as inside a car or near a heater. This can cause batteries to leak, overheat, explode or catch fire. It can also reduce the life or performance of batteries.
- When disposing of used batteries, please comply with governmental regulations or environmental public institution's rules that apply in your country/area.



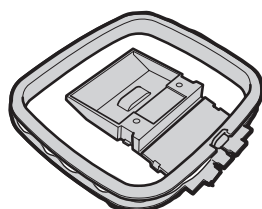
What's in the box



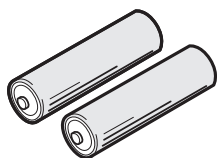
Remote Control



FM wire antenna



AM loop antenna



AAA size IEC R03 dry cell batteries x2

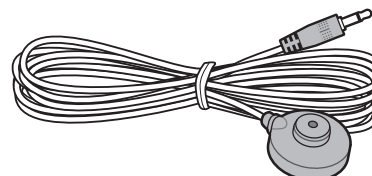


CD-ROM

Safety Brochure

Warranty sheet

These quick start guide



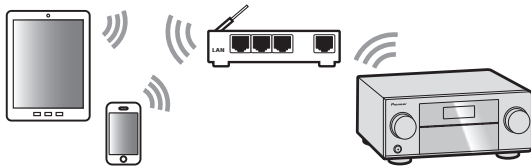
Setup microphone

Connection and initial setup

Perform connection and initial settings in any of the ways listed below.

Use "Start-up Navi" app to perform connection and initial settings

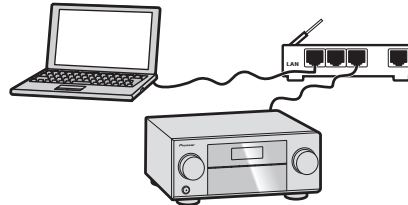
- Use a smartphone/tablet.
- Network connection is required.



- 1** Download and start "Start-up Navi" app.
- 2** Proceed along with the app guidance to perform connection and initial settings.

Follow the guidance of the built-in AVNavigator to perform connection and initial settings

- Use a Mac/PC.
- Network connection is required.



- 1** Please read the booklet "If you have a Mac/PC".
- 2** Follow the guidance of the AVNavigator built into the receiver to proceed with the connection and initial settings.

Follow the instructions in the booklet to perform connection and initial settings.

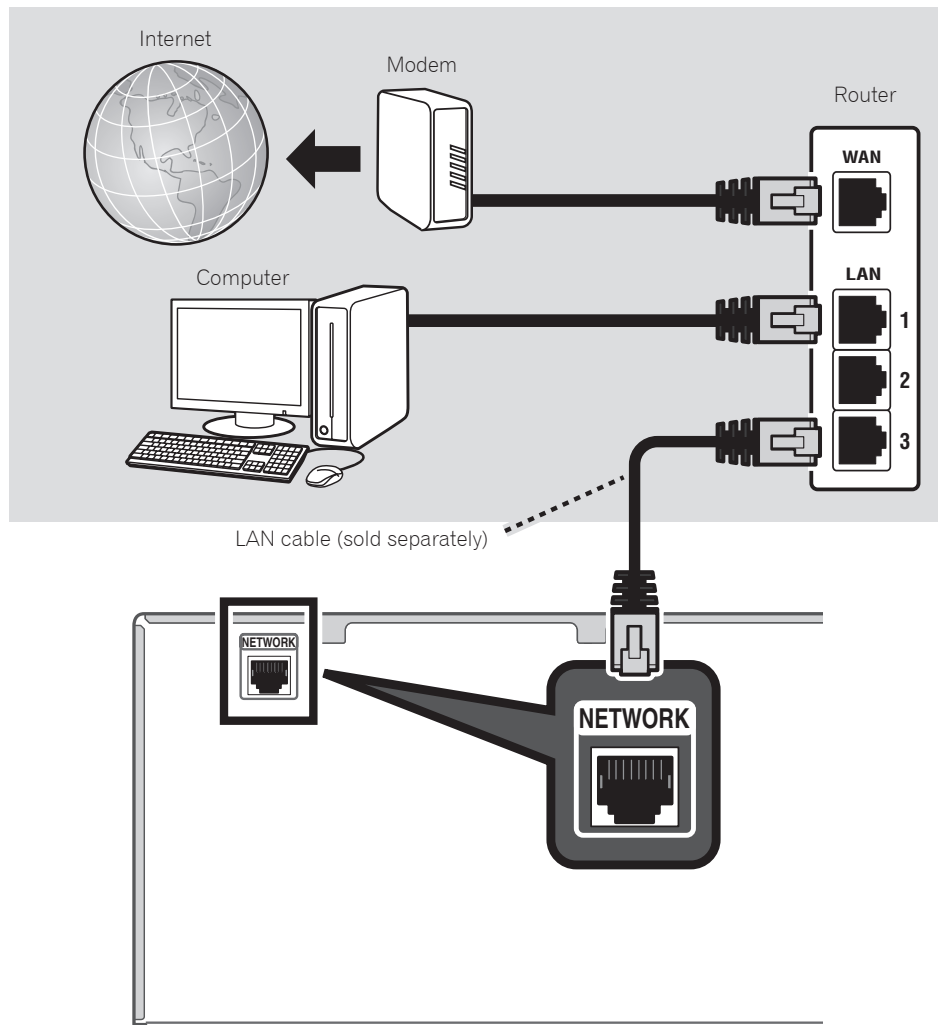
- 1** Read the booklet in the order of **STEP 1** → **STEP 2** → **STEP 3**.
- 2** Follow the instructions of each step to proceed.

Regarding WIRELESS indicator flashing

- Flashes when using WAC Mode. (Mode where network settings can be changed, when this receiver is being used as a Wi-Fi Access point)
Does not flash after network configuration and after making a wired LAN connection.
- When not making a network connection, there is no problem using it as is.

If you have a Mac/PC

Connecting to the network through LAN interface



When connecting this receiver to a wireless LAN router by Wi-Fi, refer to the "Setting network connection" in the CD-ROM's operating instructions.

Plugging in the receiver

After connecting to a LAN, connect the power cord of the receiver to a power outlet.

Plug the AC power cord into a convenient AC power outlet.

Turning the power on

Press **STANDBY/ON** to switch on the receiver and your computer.

Wait a few minutes after turning the power on before performing the following operation.

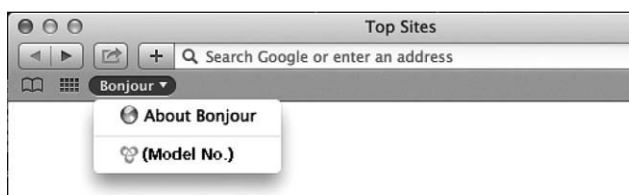


Launching the built-in AVNavigator

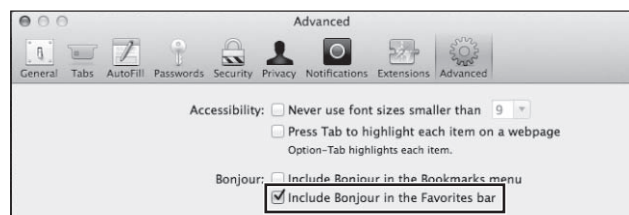
Operate AVNavigator by following the screen prompts of your computer.

Using Mac

Launch Safari and click <VSX-1130> displayed in 'Bonjour' on the Bookmarks bar.



- If 'Bonjour' is not displayed, tick the 'Include Bonjour in the Favorites bar' check box on the 'Advanced' tab in the Safari 'Preferences...' menu.



Using Windows PC

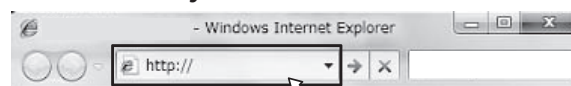
- 1 Start up Internet Explorer on your PC (open any random Internet page).
- 2 Press STATUS on the remote control and check the front panel display on the receiver (the IP address of the receiver will appear).

(Example Text Display)

192.168.0.124

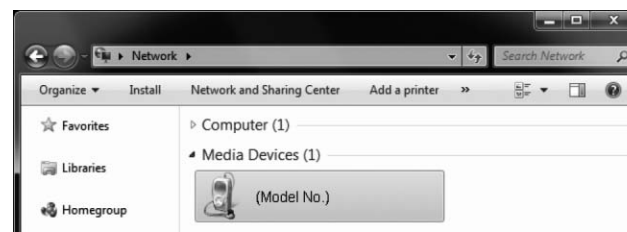
If 0.0.0.0 or 169.254.112.202 appears in the address, it indicates that the receiver is not connected to the network. Check to make sure that the receiver and router are properly connected.

- 3 Enter number in 2 above in the field in Internet Explorer shown below and then press the ENTER key.



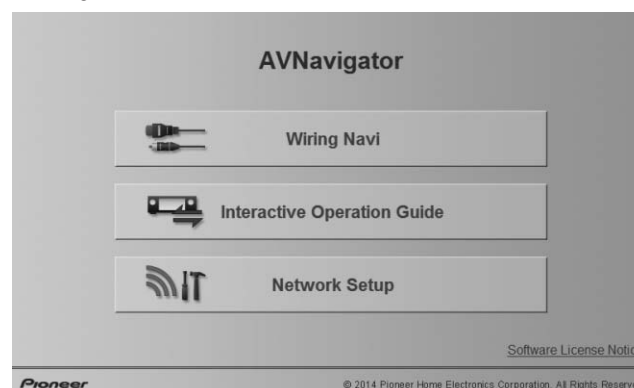
(Example Input Format) 192.168.0.124

- With a Windows PC, you can use the following method to launch AVNavigator.
Launch Explorer and then right-click <VSX-1130> displayed in the 'Network' folder, then click 'View device webpage'.



About using Wiring Navi

Wiring Navi starts when 'Wiring Navi' is pressed on the AVNavigator screen.



- When connection navigation is finished, proceed to **Interactive Operation Guide**.

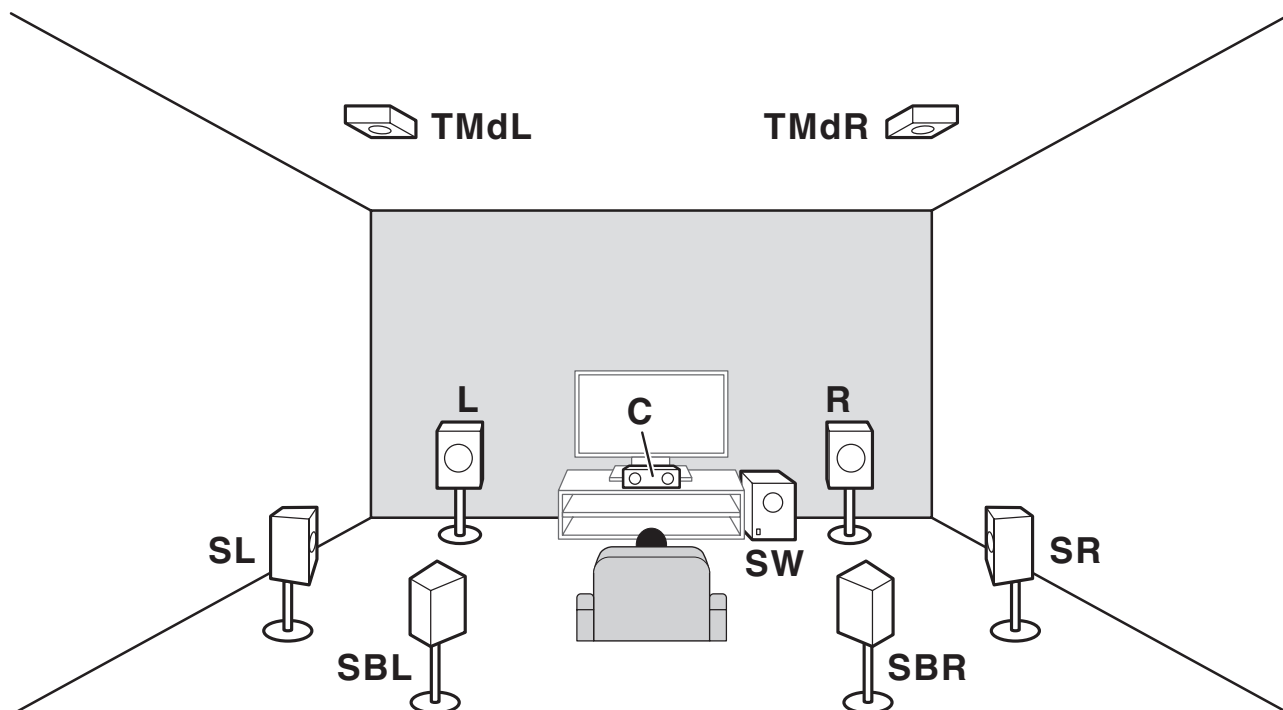
Operating environment

- AVNavigator can be used in the following environments.
 - Windows PC: Microsoft® Windows Vista®/Windows® 7/Windows® 8/Windows® 8.1
 - Mac: OS X v 10.9 or 10.8
- Some AVNavigator functions use an Internet browser. The following browsers are supported:
 - Windows PC: Internet Explorer® 8, 9, 10, 11
 - Mac OS: Safari 6.0, 7.0
- Depending on the computer network setting or security setting, AVNavigator may not operate.

Follow the booklet instructions to perform connection and initial settings

STEP 1 Connecting up

Placing the Speakers



- L** – Front Left
- C** – Center
- R** – Front Right
- SL** – Surround Left
- SR** – Surround Right
- SBL** – Surround back Left
- SBR** – Surround back Right
- TMdL** – Top middle Left
- TMdR** – Top middle Right
- SW** – Subwoofer

Note

- There are also other speaker connection patterns (front wide, etc.). For details, see "Connecting your equipment" of the operating instructions.
- To play Dolby Atmos, you need to connect the speaker of either the Top middle, Surround back, or Front wide.
- The sound is produced from one of the Top middle and Surround back speakers depending on the listening mode, etc.
- The Dolby Enabled Speaker can be used in place of the Top middle speaker. Refer to the operating instructions for details.

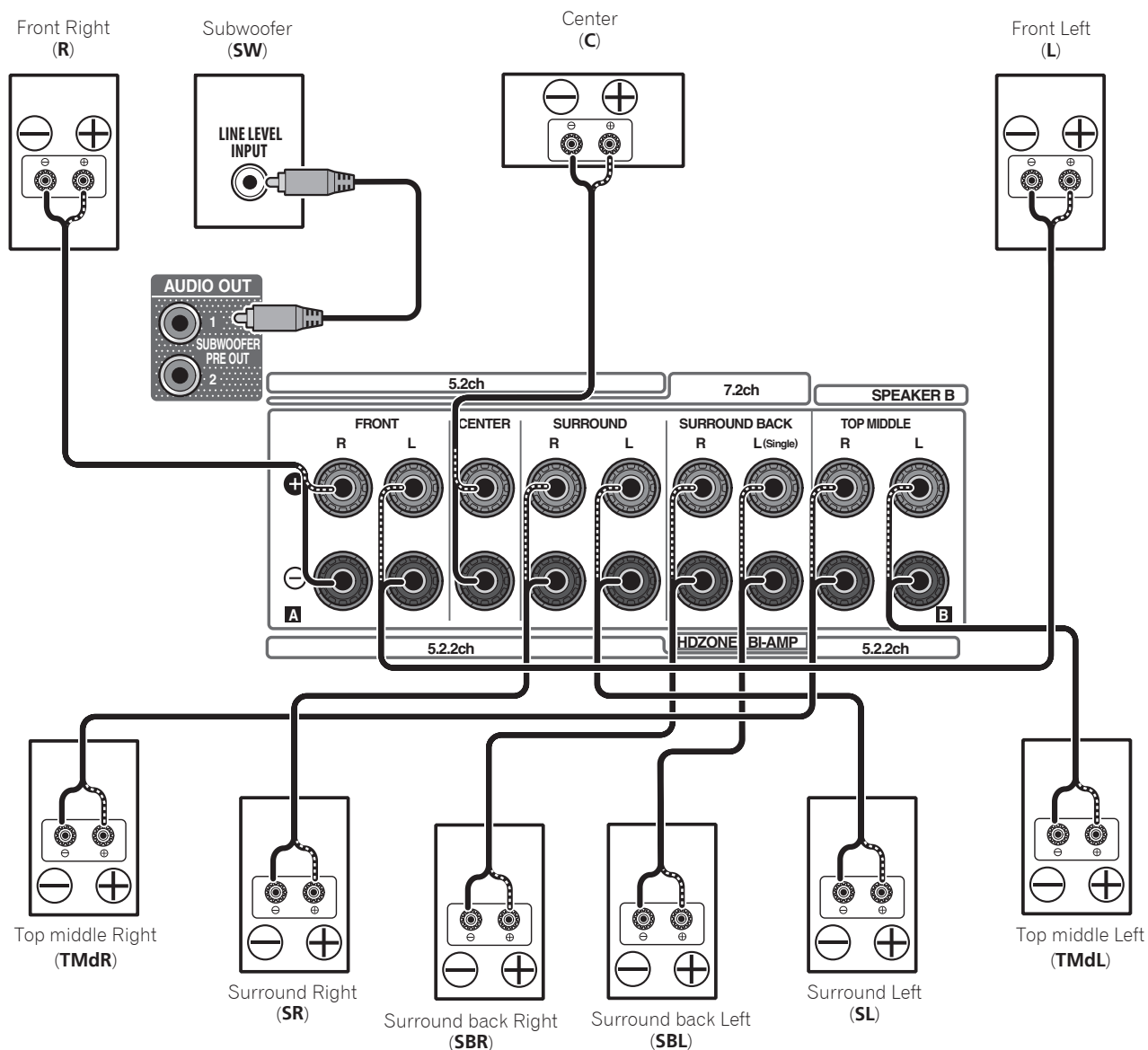
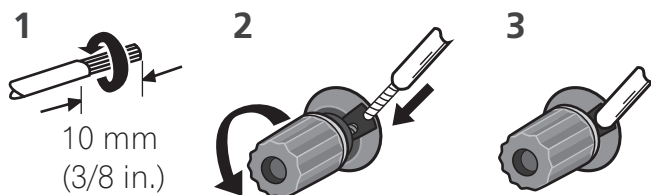
STEP 1 Connecting up

Connecting the speakers

- 1 Be sure to complete all connections before connecting this unit to the AC power source.
- 2 You can use speakers with a nominal impedance between 6 Ω and 16 Ω .
- 3 Connecting the speakers.

Bare wire connections

- 1 Twist exposed wire strands together.
- 2 Loosen terminal and insert exposed wire.
- 3 Tighten terminal.



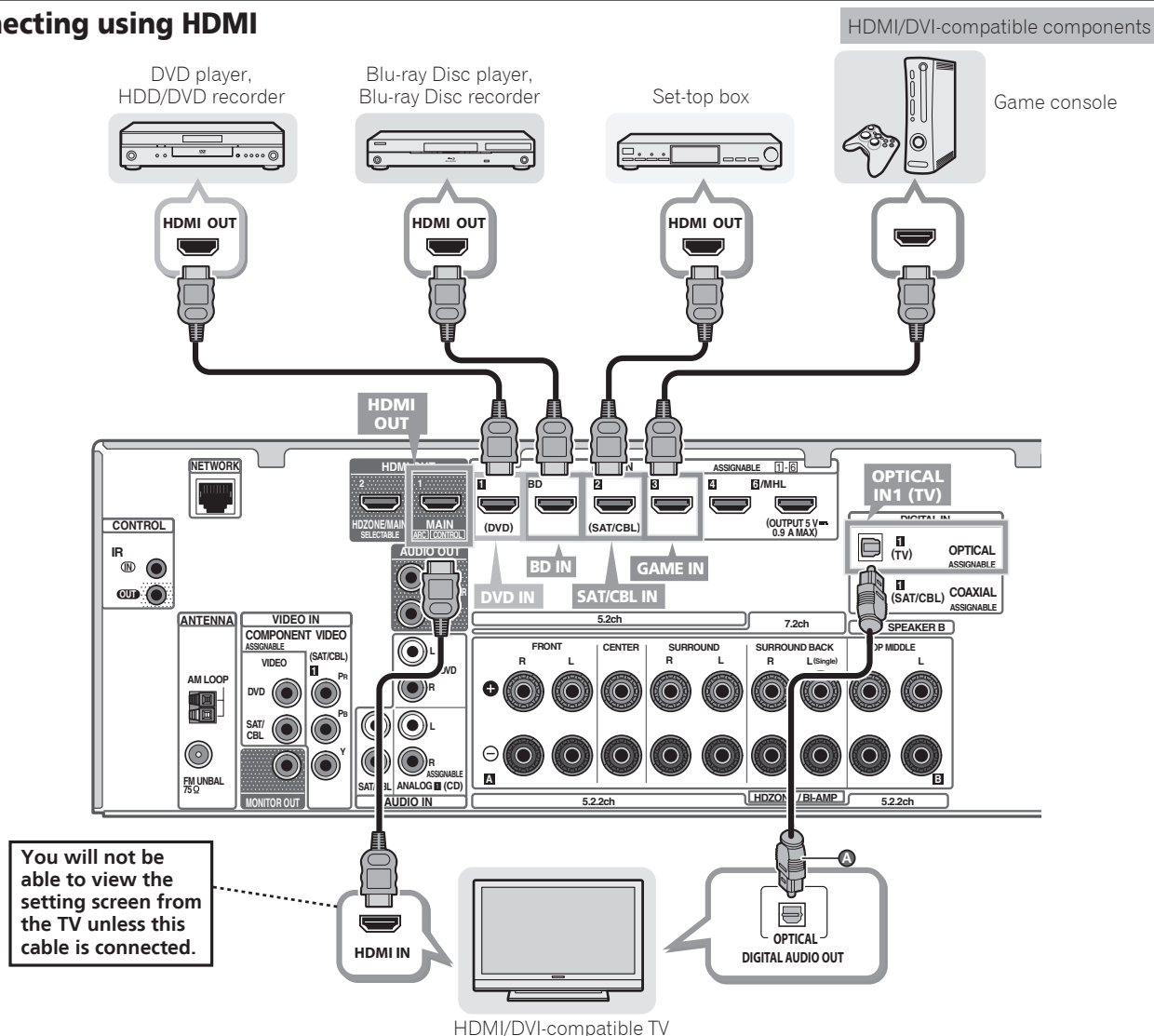
CAUTION

- These speaker terminals carry **HAZARDOUS LIVE voltage**. To prevent the risk of electric shock when connecting or disconnecting the speaker cables, disconnect the power cord before touching any uninsulated parts.

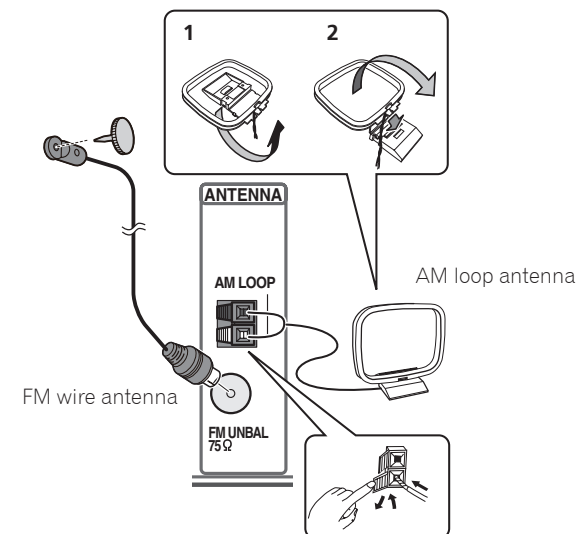
STEP 1 Connecting up

Connecting a TV and playback components

Connecting using HDMI



Connecting antennas



Plugging in the receiver

Only plug in after you have connected all your components to this receiver, including the speakers.

CAUTION

- Handle the power cord by the plug. Do not pull out the plug by tugging the cord and never touch the power cord when your hands are wet as this could cause a short circuit or electric shock. Do not place the unit, a piece of furniture, etc., on the power cord, or pinch the cord. Never make a knot in the cord or tie it with other cords. The power cords should be routed such that they are not likely to be stepped on. A damaged power cord can cause a fire or give you an electrical shock. Check the power cord once in a while. When you find it damaged, ask your nearest Pioneer authorized service center or your dealer for a replacement.
- The receiver should be disconnected by removing the mains plug from the wall socket when not in regular use, e.g., when on vacation.

Plug the AC power cord into a convenient AC power outlet.

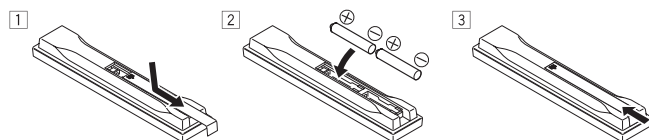
- If the TV supports the HDMI Audio Return Channel function, the sound of the TV is input to the receiver via the HDMI terminal, so there is no need to connect an optical digital cable (A). In this case, set **ARC** at **HDMI Setup** to **ON**. For details, see "HDMI Setup" of the operating instructions.

- Please refer to the TV's operation manual for directions on connections and setup for the TV.

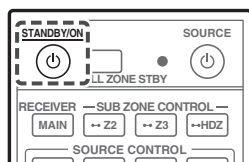
STEP 2 Initial Setup

Before you start

1 Put the batteries in the remote control.



2 Switch on the receiver and your TV.



3 Turn the subwoofer on and turn up the volume.

⚠ CAUTION

- When inserting the batteries, make sure not to damage the springs on the battery's \ominus terminals. This can cause batteries to leak or overheat.

Automatically setting up for surround sound (MCACC)

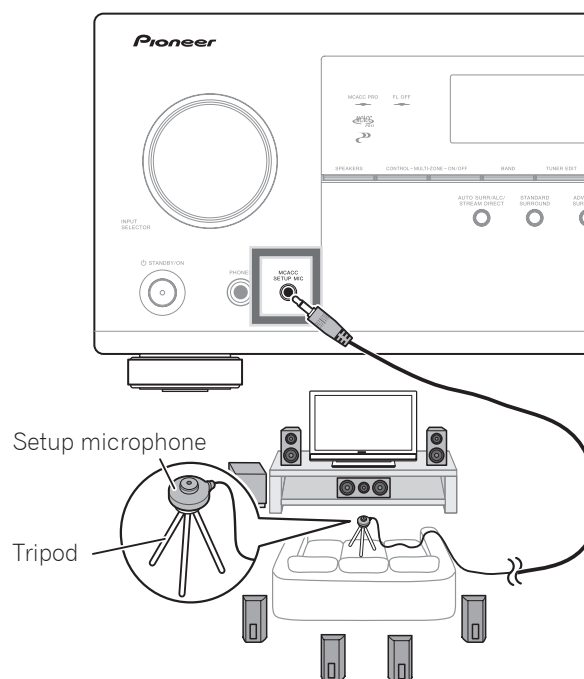
The Auto Multi-Channel ACoustic Calibration (MCACC) setup uses the supplied setup microphone to measure and analyze the test tone that is outputted by the speakers.

ⓘ Important

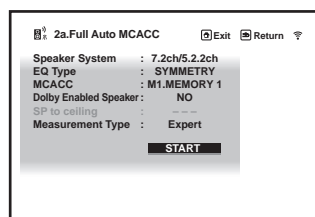
- Measure in a quiet environment.

1 Connect the supplied setup microphone.

- Set to ear height when using a tripod etc., for the microphone.



The **Full Auto MCACC** screen appears on your TV.

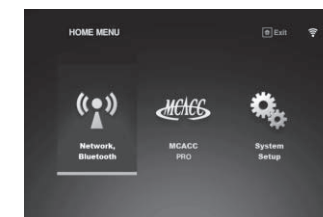


2 Press MAIN RECEIVER on the remote control, then press the ENTER button.

- Automatic measuring will start.
- Measuring will take about 3 to 12 minutes.

3 Follow the instructions on-screen.

- Automatic setting is complete when the Home Menu screen appears.

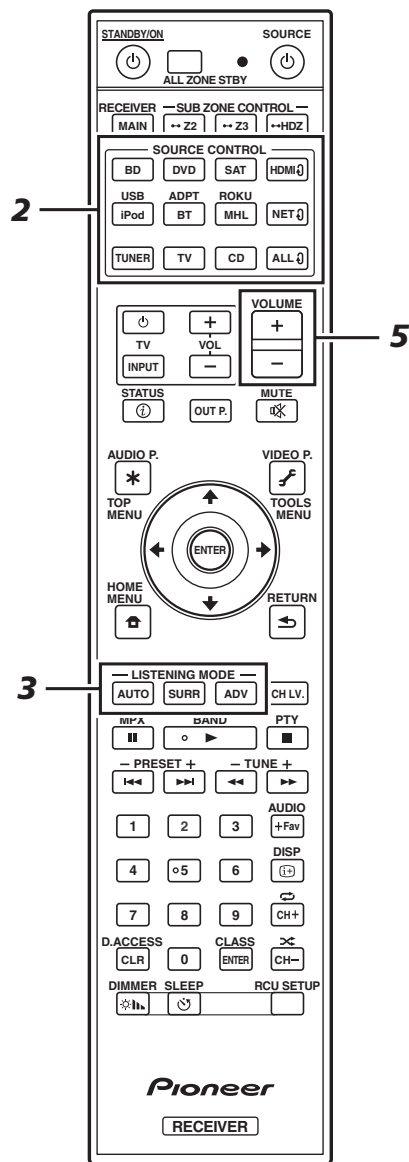


- If **Reverse Phase** is displayed, the speaker's wiring (+ and –) may be inverted. Check the speaker connections. Even if the connections are correct, **Reverse Phase** may be displayed, depending on the speakers and the surrounding environment. This does not affect measurements, however, so select **Go Next**.
- If **ERR** is displayed, check that speaker is properly connected.
- When the power turns off, refer to the "Frequently asked questions" in the booklet.

4 Make sure the setup microphone is disconnected.

STEP 3 Basic playback

Multichannel playback



1 Switch on the playback component.

E.g.) Turn the Blu-ray Disc player connected to the **HDMI BD IN** terminal on.

2 Switch the input of the receiver.

E.g.) Press **BD** to select the **BD** input.

3 Press **AUTO** to select 'AUTO SURROUND'.

Also press **SURR** or **ADV** for multichannel playback. Select your preferred listening mode.

4 Start the playback component's playback.

E.g.) Start playback of the Blu-ray Disc player.

5 Use **VOLUME +/-** to adjust the volume level.

- When no sound is emitted, increase the volume to approximately -30 dB.

Note

- When the sound is not produced from the center speaker, rear speaker and subwoofer, refer to "Frequently asked questions" in the booklet.
- When the remote control does not work, refer to the "Frequently asked questions" in the booklet.

To enjoy the many functions of the unit to the fullest extent

Load the CD-ROM into your computer and see the "Operating Instructions" (PDF) from the menu screen to read.

Note

- This unit supports AirPlay. For details, see "Using AirPlay on iPod touch, iPhone, iPad, and iTunes" of the operating instructions and the Apple website (<http://www.apple.com>).
- This unit's software can be updated ("Software Update" of the operating instructions). With Mac OS, it can be updated using Safari ("Using Safari to update the firmware" of the operating instructions).

Frequently asked questions

The center speaker or rear speaker does not produce sound

Cause	Solution
AUTO SURROUND (mode that outputs the number of input channels as it is) is selected upon 2-channel audio input such as TV, music, etc.	To play a stereo sound source in multichannel, press the SURR button or the ADV button to select your favorite mode. Example) Press the SURR button several times to select [EXT. STEREO].

The subwoofer does not produce sound

Cause	Solution
The front speaker is set to LARGE. (The low frequency component will be produced from the front speaker instead of the subwoofer when 2-channel audio input such as TV, music, etc.)	To produce output from the subwoofer, change the speaker setting. (There are two ways.) Method 1 Change the front speaker to SMALL. <ul style="list-style-type: none"> The low frequency component will be produced from the subwoofer instead of the front speaker. When the front speaker has a high capability to play low frequency components, we recommend not to change. Method 2 Change the subwoofer to PLUS. <ul style="list-style-type: none"> The low frequency component of the front speaker will be produced from both the front speaker and the subwoofer. Therefore, the bass sound may be too powerful. In that case, we recommend not to change or to change using Method 1. <p>For the procedure to change, refer to the "Speaker Setting" in the CD-ROM's operating instructions.</p>

HDMI, network, etc. operations become unresponsive

Cause	Solution
The operations of this receiver and connecting devices are unresponsive.	Try resetting. To reset, turn off the power, and press down the STANDBY/ON button on the front panel for 5 seconds or more. (The power turns off in 5 seconds after the power is turned on. The receiver's setting will be maintained.) Also try replugging the power cord of the connecting devices.

To produce sound from TV

Refer to page 8 of the booklet to perform connection and setting.
To play, press the **TV** button to switch to TV input.

The remote control does not work

Cause	Solution
The operation mode of the remote control is not switched.	When setting initial settings for the HOME MENU and AUDIO PARAMETER etc. and when performing replay settings <ul style="list-style-type: none"> Start the operation after pressing the MAIN RECEIVER button. To operate functions such as network and iPod <ul style="list-style-type: none"> Start the operation after pressing the button of each function (NET, iPod, etc.). If still not working, press the MAIN RECEIVER button first and then press the button of each function.

2 TVs (projector) are connected but video and audio are sometimes interrupted or not produced

Cause	Solution
They may be interrupted or not produced when affected by the TV in power standby.	Press the OUT P. button and ↔ button so that HDMI output connected with that TV is not selected. Refer to "Switching the HDMI output" in the CD-ROM's operating instructions for details.

The power suddenly turns off and the WIRELESS indicator flashes

Cause	Solution
The conductive wire of the speaker cord is contacting the rear panel, or positive and negative of the conductive wire are contacting and the protection circuit is activated.	Twist the conductive wire of the speaker cord once again, and connect it so that it will not stick out from the speaker terminal on the amplifier or speaker side.