



# UniversalAquatak

125 | 130 | 135

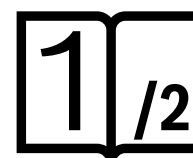
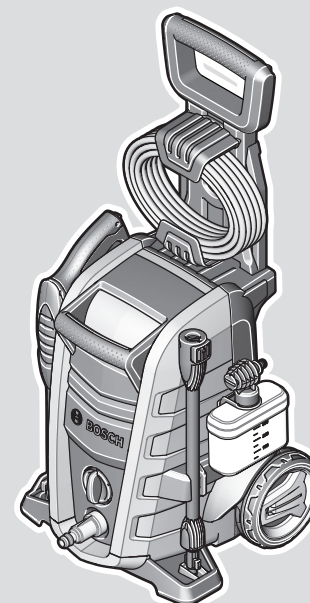
Robert Bosch Power Tools GmbH  
70538 Stuttgart  
GERMANY

[www.bosch-pt.com](http://www.bosch-pt.com)

F 016 L94 954 (2025.02) 0 / 21



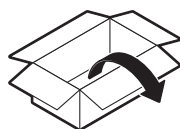
F 016 L94 954



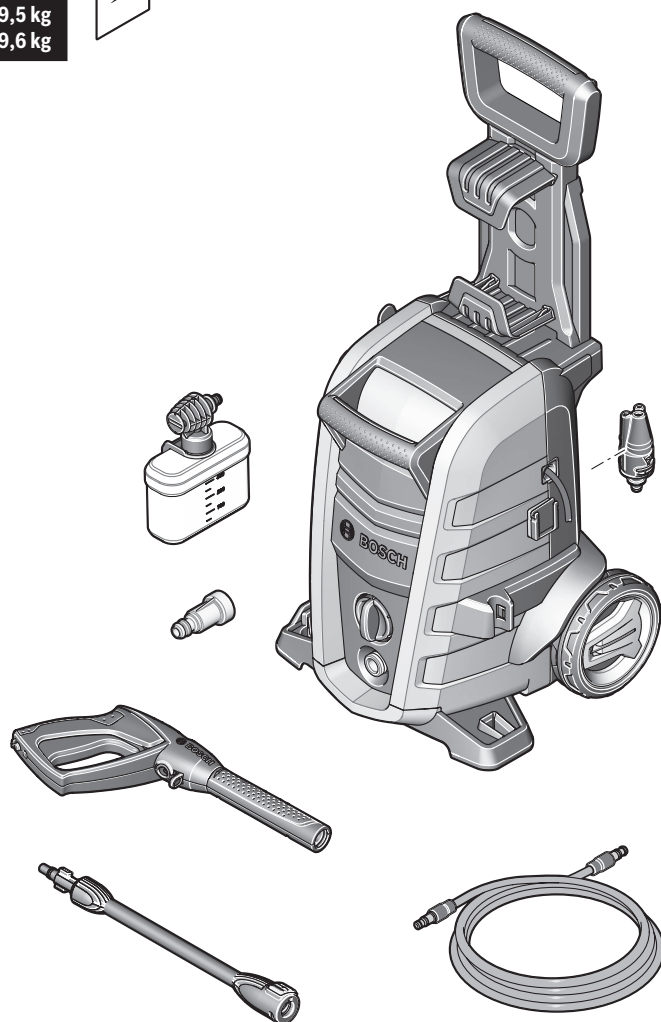
en Original instructions

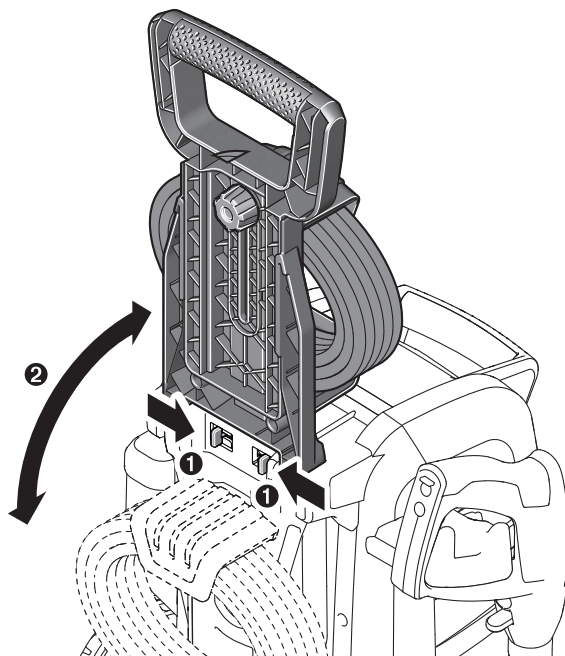
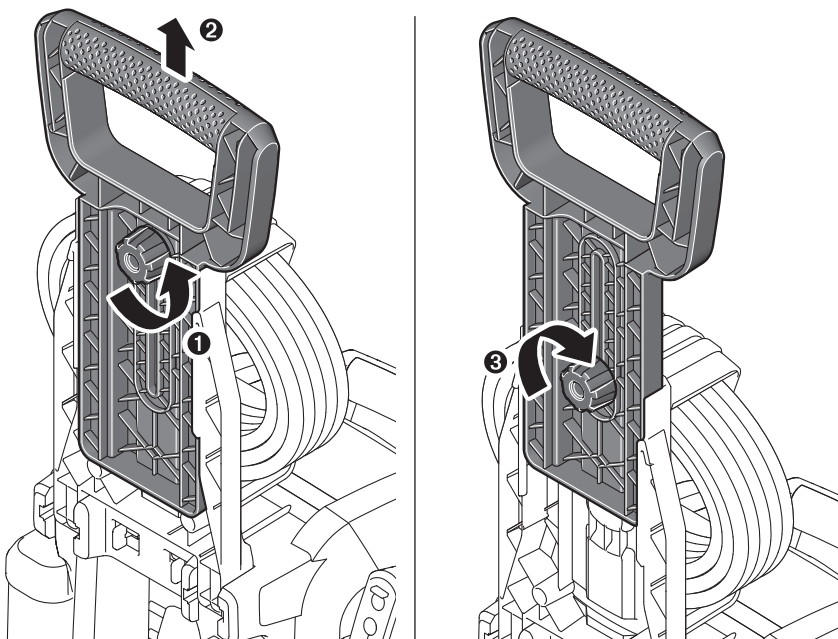


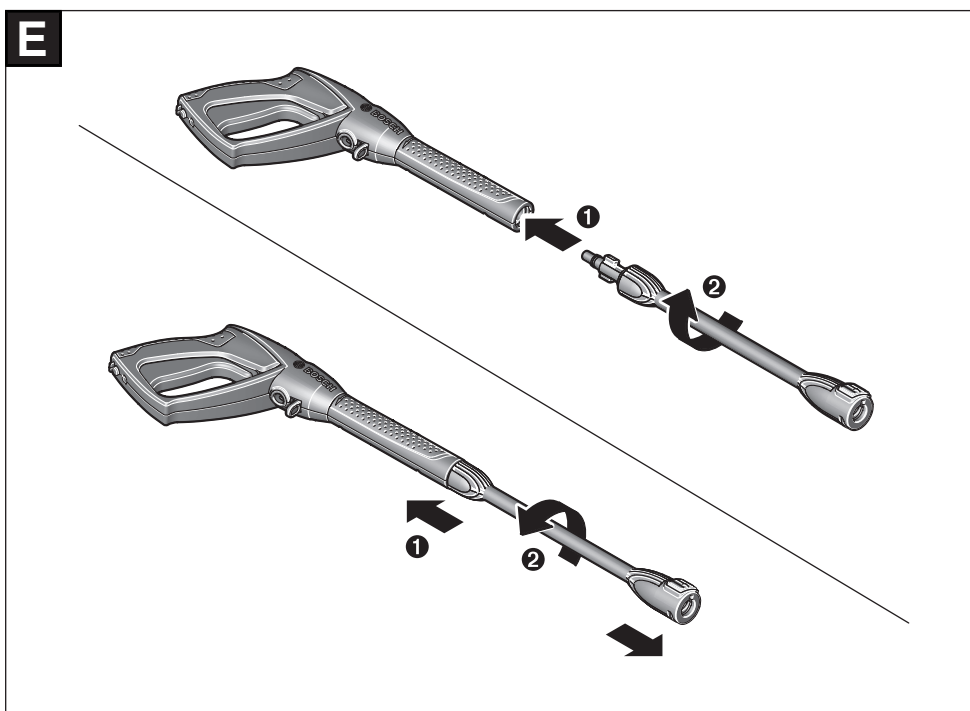
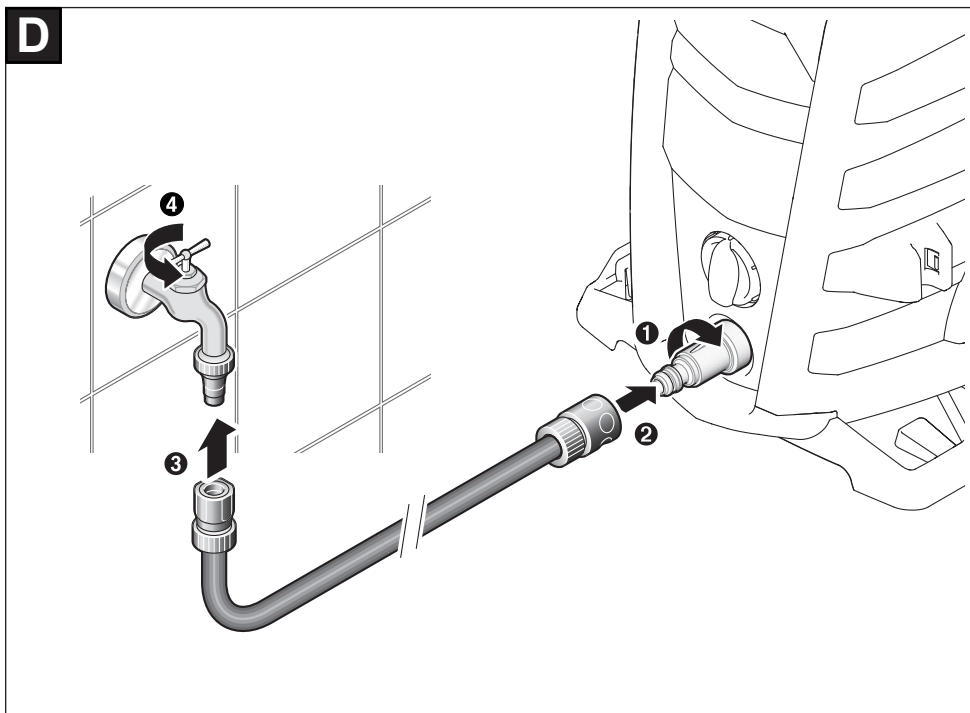


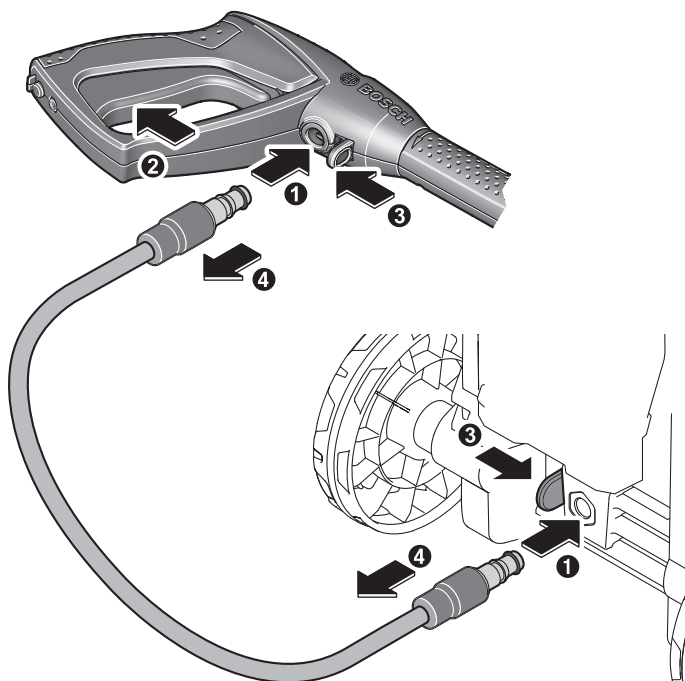
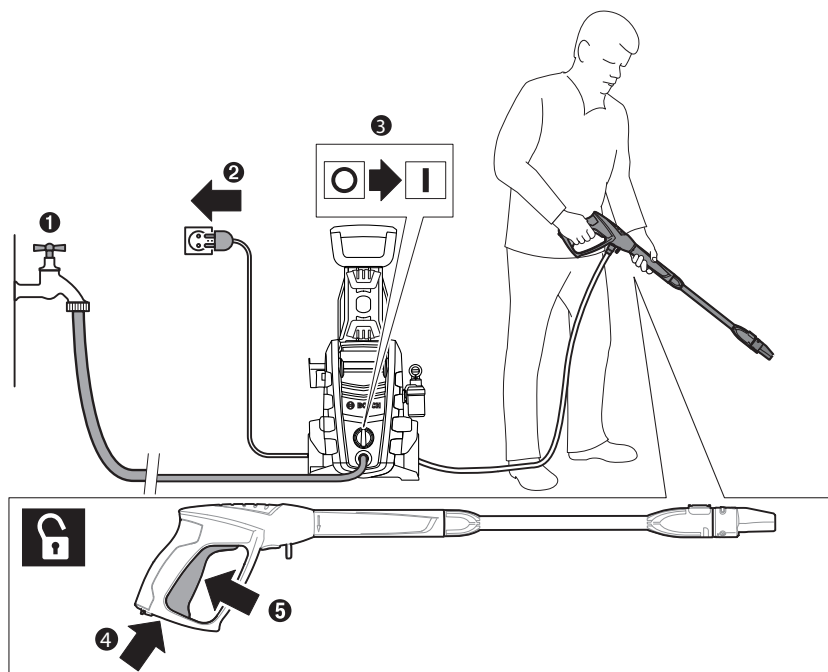
**A**

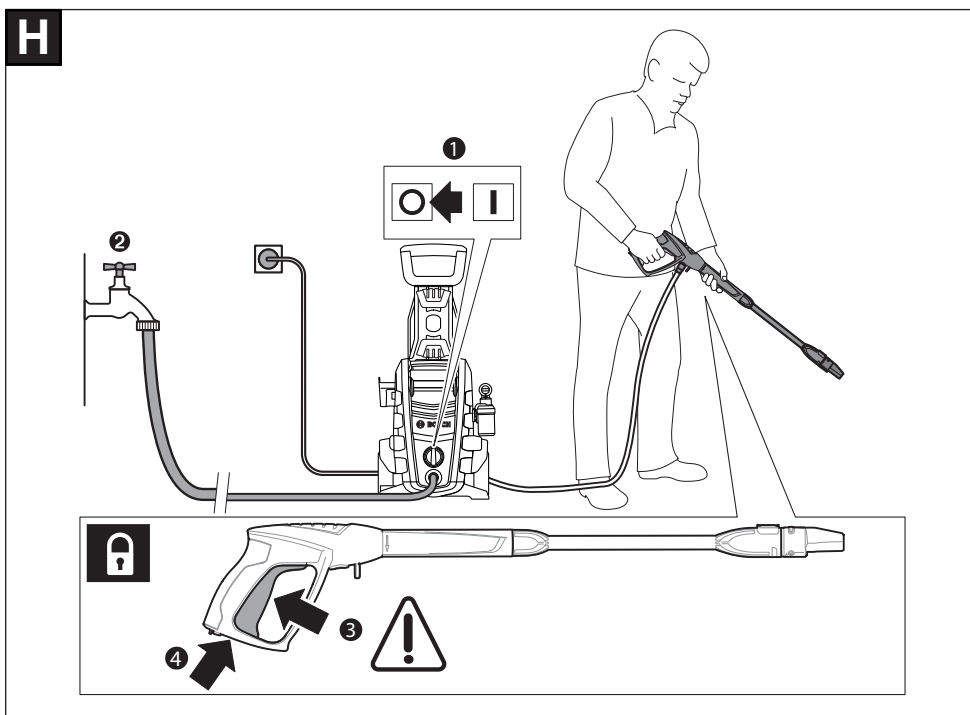
UA 125 8,2 kg  
UA 130 9,5 kg  
UA 135 9,6 kg

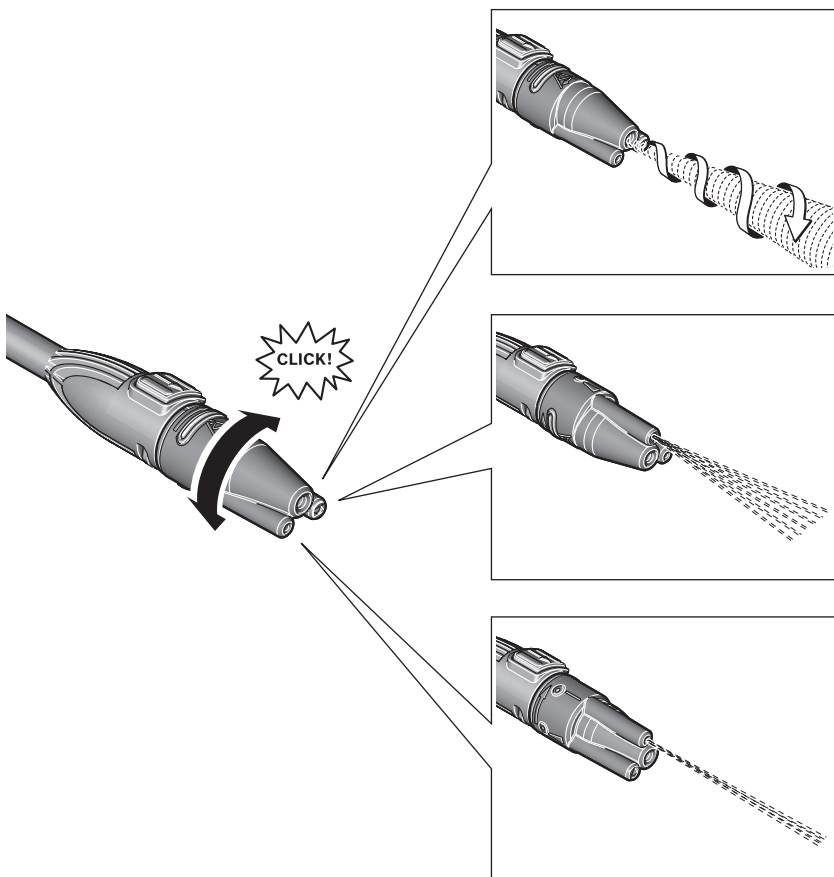
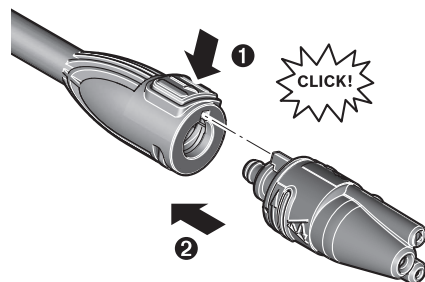


**B****C**



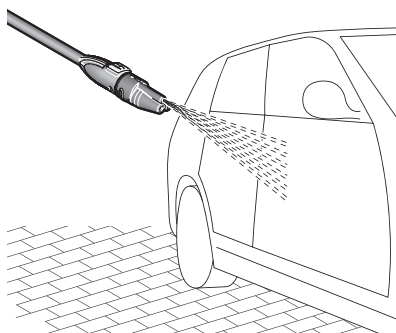
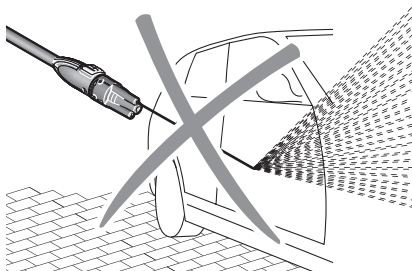
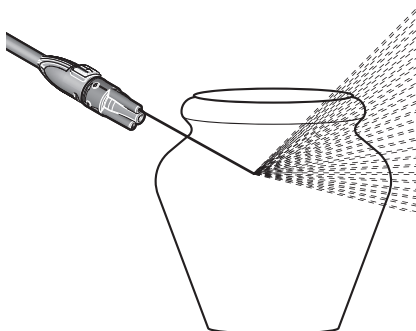
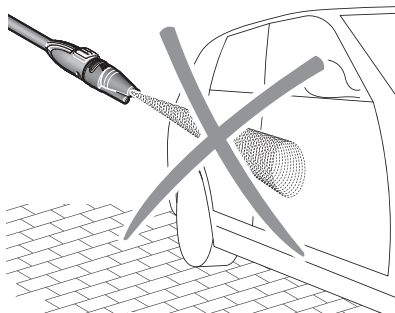
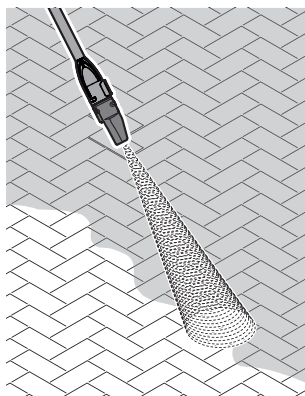
**F****G**

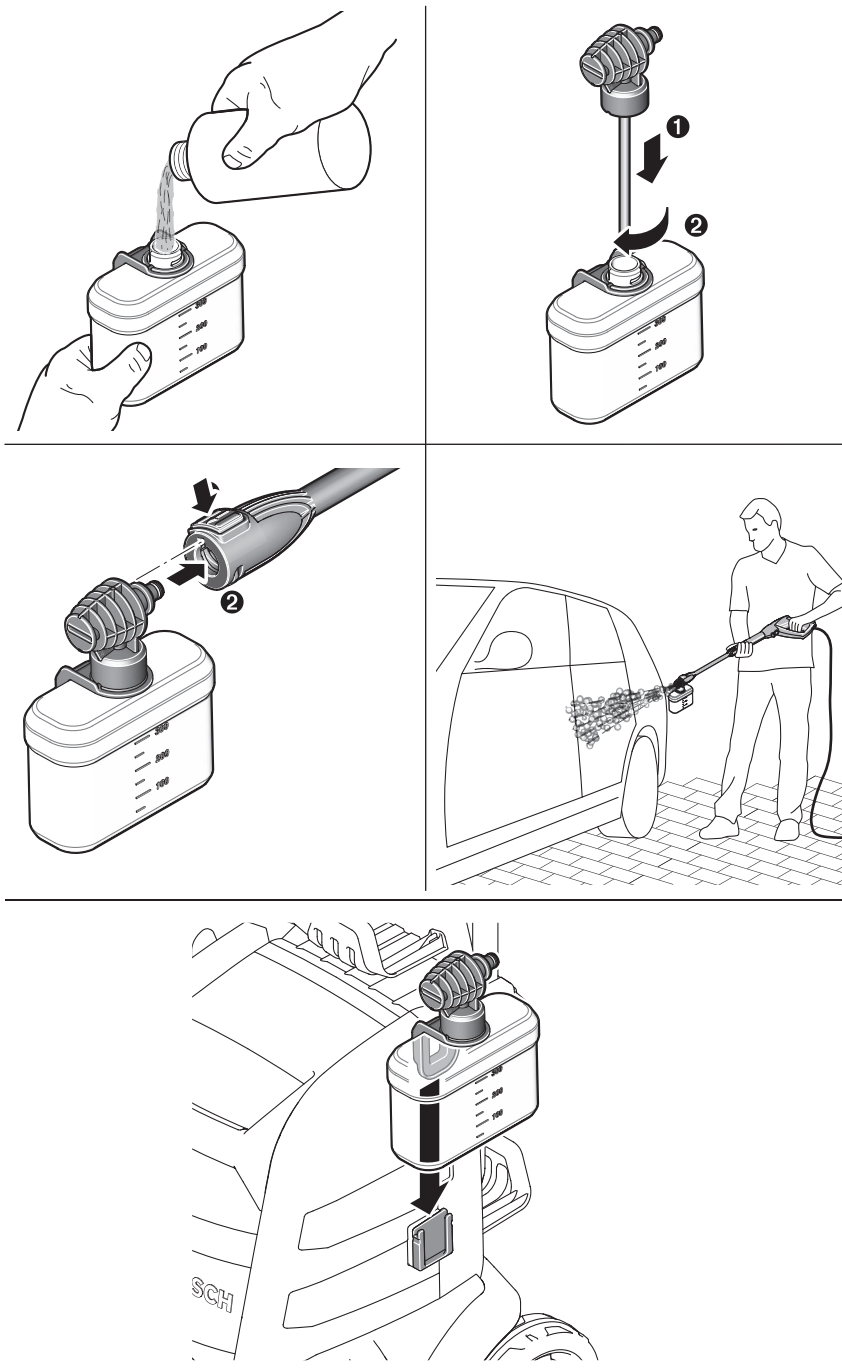


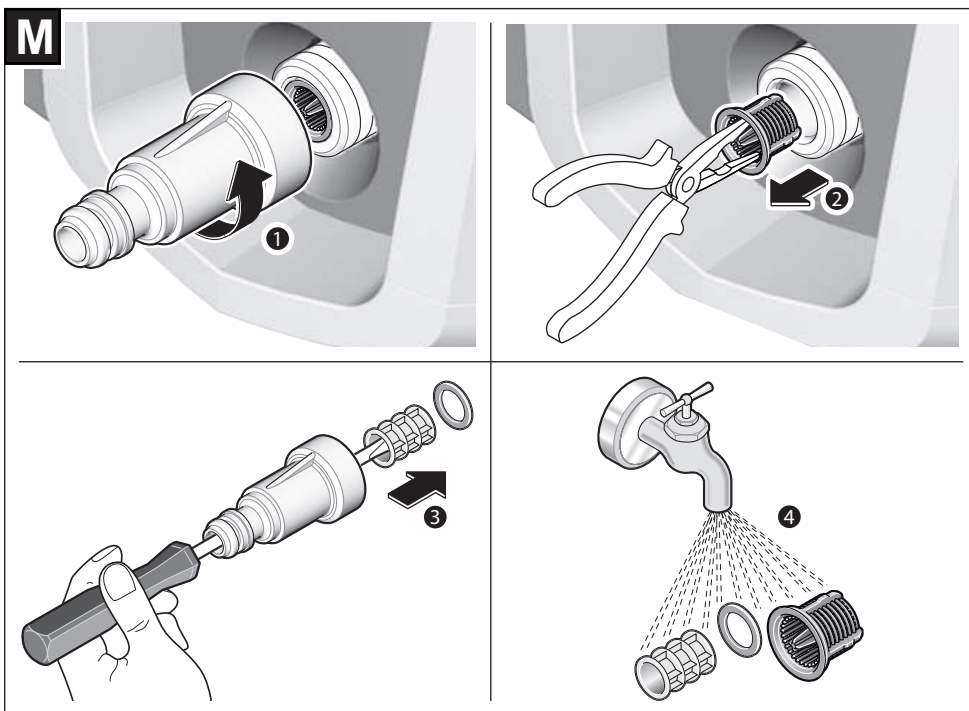
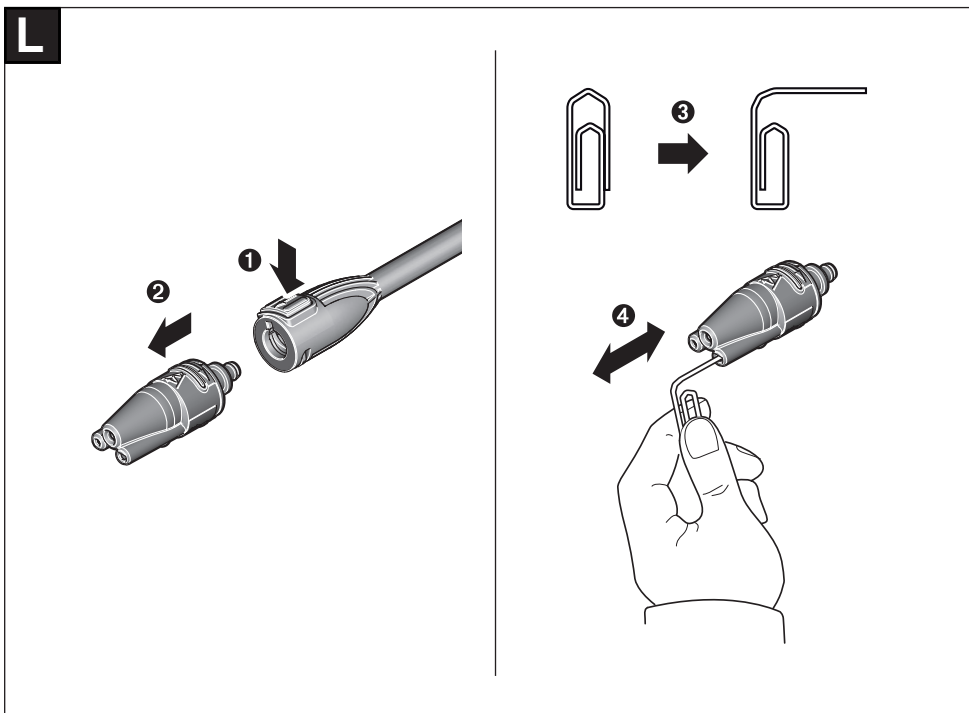


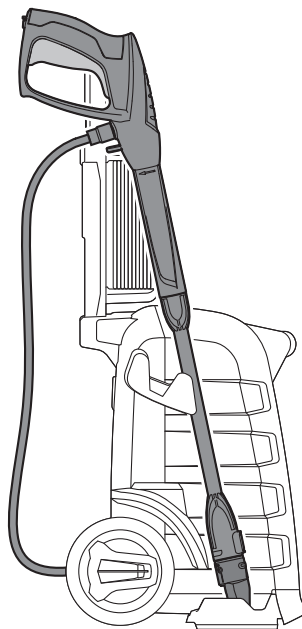
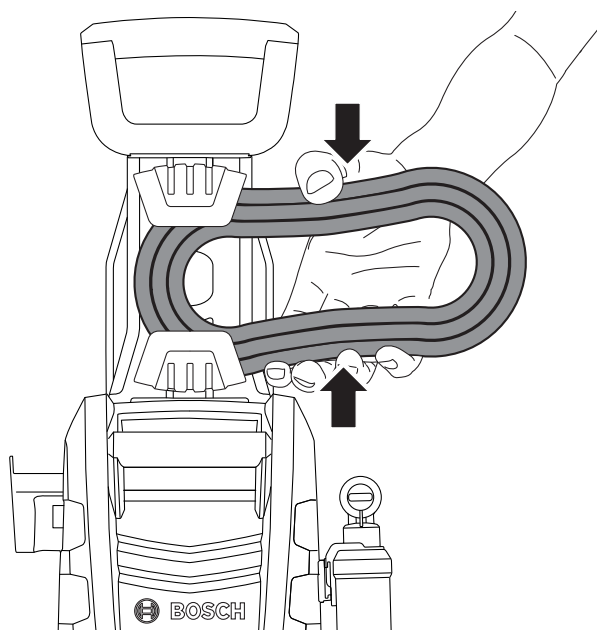


**J**

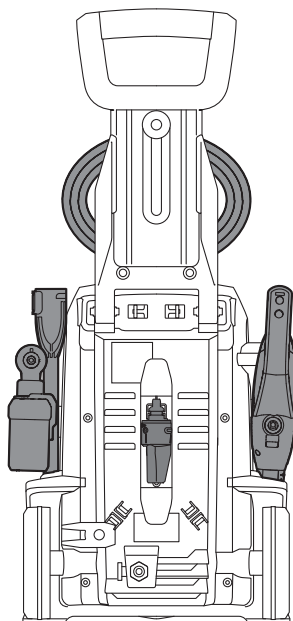


**K**

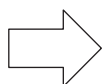
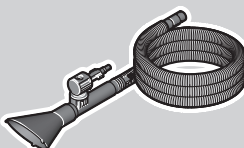
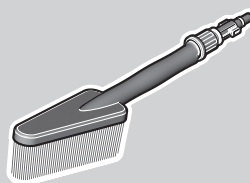
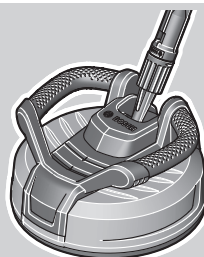
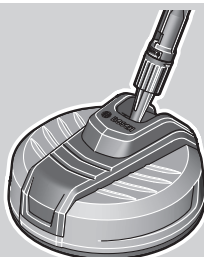
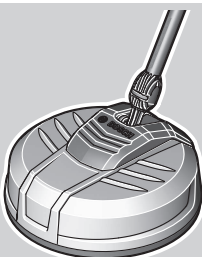
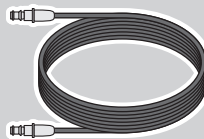
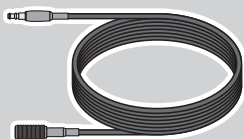
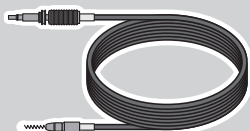
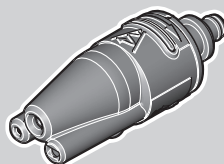
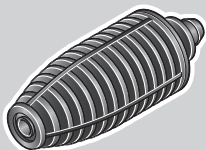
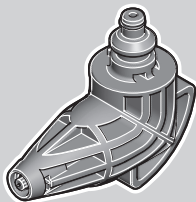


**N****O**

**P**



Q



[www.bosch-pt.com](http://www.bosch-pt.com)

# English

## Safety Notes

**WARNING!** Read all safety warnings and all instructions. Failure to follow the safety warnings and instructions may result in electric shock, fire and/or serious injury.

### Explanation of symbols



General hazard safety alert.



Never direct the water jet at people, animals, the machine or electric components.

**WARNING:** High pressure jets can be dangerous if subject to misuse.



According to the applicable regulations, the appliance must never be used on the drinking water network without a system separator. Use a separator as per IEC 61770 Typ BA.

Water flowing through a system separator is considered not drinkable.



The **UniversalAquatak 135** is intended for use only in premises having a service current capacity  $\geq 100$  A per phase, supplied from a distribution network having a nominal voltage of 230 V. If in doubt please contact your Supply Authority.

### Safety Notes for pressure washer



Read all safety warnings and all instructions. Failure to follow the safety warnings and instructions may result in electric shock, fire and/or serious injury.

The warning and information signs attached to the unit provide important information for safe operation.

Apart from the information in the operating instructions, comply with the general safety regulations and regulations for the prevention of accidents.

### Connecting to the mains

- ▶ The voltage indicated on the rating plate must correspond to the voltage of the power source.
- ▶ We recommend that this product is only connected into a socket which is protected by a circuit-breaker that would be actuated by a 30 mA residual current.



The circuit breaker of the power supply should have  $\geq 16$  A with at least type C.

- ▶ The installation of the electrical supply must be carried out by a qualified electrician and must comply with IEC 60364-1.
- ▶ If the connecting cable or the mains plug are damaged, have the repair carried out by an authorised Bosch Service Centre.

- ▶ Plugs and sockets situated near the work site or outdoors should be to class IP 55 of IEC60529 / BS 5490 to provide adequate protection against ingress of water, etc. and cable entries require effective sealing. Rubber shrouds should be provided over cable glands. Drip-proof (class IP X2 of IEC 60529 / BS 5490) plugs and sockets to IEC60309 / BS 4343 are suitable for use indoors where the plug is away from the water spray area where the appliance is in use.
- ▶ Remove the plug from the socket whenever the machine is left unattended for any period.
- ▶ Never touch the mains plug with wet hands.
- ▶ Do not pull the plug while operating the device.
- ▶ Do not run over, crush or pull the power supply cord or extension cord, otherwise it may be damaged. Protect the cable from heat, oil and sharp edges.
- ▶ Do not use the unit, if the power supply cord or important parts, e. g. high-pressure hose, power gun or safety devices are damaged.



**Warning:** Inadequate extension cables can be dangerous. When using an extension cable, the plug and socket must be of watertight construction and suitable for outdoor use.

When using an extension cable, the extension cable must have the following dimensions:

- $\varnothing 2.5$  mm<sup>2</sup>, max. length 25 m
- ▶ Note: When using an extension cable, it must be earthed in accordance with the applicable regulations and connected to the earth cable of your power supply via the plug.
- ▶ The connections (plugs and sockets) should be kept dry and off the ground.

### Water connection

- ▶ Observe the regulations of your water supply company.
- ▶ All connecting hoses must have properly sealed joints.
- ▶ Make sure that the supply hose is at least 12.7 mm (1/2") in diameter and is reinforced.
- ▶ The appliance should never be used on the drinking water supply without a back flow valve. Water which has passed the back flow valve is regarded as undrinkable.
- ▶ The high-pressure hose must not be damaged (danger of bursting). A damaged high-pressure hose must be replaced immediately. Only use hoses and connections recommended by the manufacturer.
- ▶ High-pressure hoses, fittings and couplings are important for the safety of the appliance. Use only hoses, fittings and couplings recommended by the manufacturer.
- ▶ Only clean or filtered water should be used for intake.

### Application

- ▶ Before use, check that the machine and operating equipment are in perfect condition and are safe to operate. Do not use if it is not in perfect condition.

- Do not direct the jet against yourself or others in order to clean clothes or footwear.
- Do not use solvent-containing liquids, undiluted acids, acetone or solvents, including petrol, paint thinners, heating oil. The sprayed vapours are highly flammable, explosive and toxic.
- The appropriate safety regulations must be observed when using the unit in dangerous areas (e.g. petrol stations). It is forbidden to operate the unit in potentially explosive locations.
- The unit must be placed on a solid base.
- Take care if using the machine in a confined space ensuring that there is adequate ventilation. Ensure that all vehicles are switched off at all times whilst cleaning.
- Operation of this machine requires both hands to be used at all times. Do not operate from a ladder. Take care when using the machine on balconies or other raised areas ensuring that you can see any edges at all times.
- The use of other cleaning agents or chemicals may adversely affect the safety of the machine.
- All current-conducting components in the work area must be protected against splashed water.
- The gun trigger must not be jammed in position "ON" during operation.
- During use of high pressure cleaners, aerosols may be formed. Inhalation of aerosols can be hazardous to health.
- Shielded nozzles can reduce the aerosol effect. If necessary wear personal protective equipment (PPE) e.g. safety goggles, breathing protection etc to protect against water, particles and/or aerosols sprayed back from parts.
- High pressure may cause objects to rebound. If necessary wear suitable personnel protective equipment such as safety goggles.
- Vehicle tyres/tyre valves may only be cleaned from a minimum distance of 30 cm in order to avoid damages by the high-pressure jet. The first indication of damage is the discolouration of the tyre. Damaged vehicle tyres/ tyre valves are dangerous to life.
- Materials containing asbestos and other materials which contain substances which are hazardous to your health must not be sprayed.
- Never use the pressure washer without the filter or with a dirty or damaged filter. Using the pressure washer without a filter or with a dirty or damaged filter may invalidate the warranty.
- Metal parts may become hot after prolonged usage, if necessary wear protective gloves.
- Avoid high pressure washing in bad weather conditions especially when there is a risk of lightning.
- Wear suitable protective clothing to protect against splash water. Do not use the appliance within the range of persons, unless they wear protective clothing.

## Operation

- The operator must use the unit in accordance with the regulations. Local conditions must be taken into account. When working, pay attention to other people, especially to children.
- The unit may only be used by authorised persons who have received training or have demonstrated their ability to operate the unit. The unit must not be operated by children or juveniles (danger of accidents due to incorrect use of the unit).
- Never allow children, persons with physical, sensory or mental limitations or a lack of experience and/or knowledge and/or people unfamiliar with these instructions to use the product. Local regulations may restrict the age of the operator.
- Children should be supervised to ensure that they do not play with the product.
- The unit must never be left unsupervised while the unit is switched on.
- The water jet from the high-pressure nozzle produces a recoil on the gun. You should therefore hold the gun and spray lance firmly with both hands.
- Never use a roto nozzle or pencil jet to clean motor vehicles.

## Transport

- Switch off the motor and secure the unit before transporting.

## Maintenance


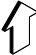
- Switch off the unit prior to all cleaning and maintenance work and before replacing components. Pull out the mains plug if the unit is mains-operated.
- Repairs may only be carried out by authorised Bosch Service Centres.

## Accessories and spare parts





- Accessories and spare parts which have been approved by Bosch must be used. Original accessories and spare parts guarantee that the machine can be operated safely and without any breakdowns.

## Symbols

The following symbols are important for reading and understanding the original instructions. Please take note of the symbols and their meaning. The correct interpretation of the symbols will help you to use the product in a better and safer manner.

Symbol	Meaning
	Movement direction
	Reaction direction



Symbol	Meaning
	Weight
	On
	Off
Lo	Low pressure
Hi	High pressure
	Accessories

## Product Description and Specifications



Read all safety warnings and all instructions. Failure to follow the safety warnings and instructions may result in electric shock, fire and/or serious injury.

Please observe the illustrations at the ending of this operating manual.

### Intended Use

The product is intended for cleaning areas and objects outside the house, tools, vehicles and boats, if the appropriate accessories and cleaning agents are used.

The intended use is related to operation within 0 °C and 40 °C ambient temperature.

This product should not be used for professional use.

## Technical Data

Pressure washer		UniversalAquatak 125	UniversalAquatak 130	UniversalAquatak 135 <sup>A)</sup>
Article number		<b>3 600 HA7 A..</b>	<b>3 600 HA7 B..</b>	<b>3 600 HA7 C..</b>
Rated power	kW	1.5	1.7	1.9
Supply temperature max.	°C	40	40	40
Supply rate min.	l/min	6	7	7.5
Allowable pressure	MPa	12.5	13	13.5
Rated pressure	MPa	7.5	9	9.2
Rated Flow	l/min	5.3	6	6.4
Maximum inlet pressure	MPa	1	1	1
Autostop Function		●	●	●
Weight	kg	6.4	7.9	7.9
Protection class		□ / II	□ / II	□ / II
Serial number	See serial number (rating plate) on pressure washer.			

A) Starting cycles generate brief voltage drops. Interference with other equipment/machines may occur in case of unfavourable mains system conditions. Malfunctions are not to be expected for system impedances below **0.400** ohm. If in doubt, please contact your electricity supplier.

The values given are valid for a voltage [U] of 230 V. For different voltages and models for specific countries, these values can vary.

## Noise/Vibration Information

		3 600 HA7 A..	3 600 HA7 B..	3 600 HA7 C..
Noise emission values determined according to <b>EN 60335-2-79</b>				
Typically the A-weighted noise levels of the product are:				
– Sound pressure level	dB(A)	<b>77</b>	<b>73</b>	<b>74</b>
– Uncertainty K	dB	<b>3,0</b>	<b>3,0</b>	<b>3,0</b>
<b>Wear hearing protection!</b>				
Vibration total values $a_h$ (triax vector sum) and uncertainty K determined according to <b>EN 60335-2-79</b>				
– Vibration emission value $a_h$	$m/s^2$	<b>1,3</b>	<b>1,5</b>	<b>1,3</b>
– Uncertainty K	$m/s^2$	<b>0,6</b>	<b>0,6</b>	<b>0,6</b>

## Mounting and Operation

Representation/Action Objective	Figure	Page
Delivery Scope UniversalAquatak 125/130/135	<b>A</b>	3
Fold down handle operation	<b>B</b>	4
Adjusting the Handle	<b>C</b>	4
Connecting to the water supply	<b>D</b>	5
Connecting/disconnecting high pressure gun to lance	<b>E</b>	5
Connecting/disconnecting high pressure water supply hose/ nozzle	<b>F</b>	6
Starting	<b>G</b>	6
Stopping	<b>H</b>	7
Attaching Nozzle	<b>I – J</b>	8– 9
Adjust water jet		
Connect detergent bottle	<b>K</b>	10
Clean nozzle	<b>L</b>	11
Clean both filters	<b>M</b>	11
Storing the lance	<b>N</b>	12
Placing hose into the hose holder	<b>O</b>	12
Gun/lance/nozzle stored during work breaks	<b>P</b>	13
Selecting accessories	<b>Q</b>	14

## Switching on

### For Your Safety



Warning: Switch off, remove plug from mains before adjusting, cleaning or if cable is cut, damaged or entangled.

The operating voltage is 230 V AC, 50 Hz (for non-EU countries 220 V, 240 V as applicable). If in doubt contact a qualified electrician or the nearest Bosch Service Centre.

If you want to use an extension cable when operating your high pressure washer, only the following cable dimensions should be used:

– 2.5 mm<sup>2</sup> – max length 25 m

Note: If an extension cable is used it must be earthed and connected through the plug to the earth cable of your supply network in accordance with prescribed safety regulations.

If in doubt contact a qualified electrician or the nearest Bosch Service Centre.



**WARNING:** Inadequate extension cables can be dangerous. Extension cable, plug and socket must be of watertight construction and intended for outdoor use.

The connections (plugs and sockets) should be kept dry and off the ground.

For increased electrical safety use a Residual Current Device (RCD) with a tripping current of not more than 30 mA. Always check your RCD every time you use it.

If the supply cord is damaged, it must be replaced by a Bosch Service Centre.

For products not sold in GB:

Warning: For your safety, it is required that the plug attached to the product is connected with the extension cord. The coupling of the extension cord must be protected against splash water, be made of rubber or coated with rubber. The extension cord must be used with a cable strain relief.

To prevent damage to the appliance, do not allow it to operate dry.

### ► Products sold in GB only:

Your product is fitted with an BS 1363/A approved electric plug with internal fuse (ASTA approved to BS 1362). If the plug is not suitable for your socket outlets, it should be cut off and an appropriate plug fitted in its place by an authorised customer service agent. The replacement plug should have the same fuse rating as the original plug. The severed plug must be disposed of to avoid a possible shock hazard and should never be inserted into a mains socket elsewhere.

## Operation

► To prevent damage to the appliance, do not allow it to operate dry.

### Starting

Attach water supply hose (not supplied) to the mains water supply and machine.

Connect the product to the mains supply ensuring that the mains switch is in the off position.

Open water tap.

Press the safety lock (back button on the gun handle) to release the trigger. Fully press the trigger until there is a constant flow of water to clear the air from the machine and water supply hose. Release trigger. Press the safety lock (front button on the gun handle).

Turn button on main switch. Point the power gun downwards. Press the trigger safety lock to release the trigger. Fully press the trigger.

### Autostop Function

The machine is designed to switch off the motor when the trigger is released on the gun.

## Working Advice

### General

► Never use a roto nozzle or pencil jet to clean motor vehicles.

Ensure that the pressure washer is on level ground.

Do not overreach with the high pressure hose or move the pressure washer by pulling the hose, this could cause the machine to become unstable and fall over.

Do not kink or drive a motor vehicle over the high pressure hose. Do not expose the high pressure hose to sharp edges or corners.

### Working advice for cleaning with detergents

- ▶ Only use cleaning agents suitable specifically for high pressure washers.
- ▶ Detergents must not be used undiluted. The products are safe to use as they contain no acids, alkalis or substances which are detrimental to the environment. We recommend that the detergents are kept out of the reach of children. If detergent comes into contact with the eyes, wash immediately with plenty of water and if swallowed contact a doctor immediately.
- ▶ Comply with the application, disposal and warning instructions of the detergent manufacturers.

We recommend using cleaning agent sparingly in the interest of environmental protection. Observe the recommended dilution on the detergent label.

### Recommended cleaning method

Step 1: Attach the trio nozzle and remove the heavy dirt.

Step 2: Attach the foam bottle and spray on the detergent sparingly.

Step 3: Rinse off the loosened dirt and detergent using the trio nozzle.

Note: When cleaning a vertical surface spray off dirt/detergent from the bottom and work in an upwards direction. Rinse from the top and work downwards.

### Use with alternative water sources

This high-pressure washer will self prime and can draw water from water tanks and natural water sources. It is IMPORTANT that the water is clean and the BOSCH inlet filter is clear and fitted to the machine.

### Open tanks/containers and natural water sources

Use the Self Priming accessory kit comprising:

- Inlet strainer with non return valve
- 3 m reinforced supply hose
- Universal coupling to the pressure washer

This enables the pressure washer to draw water up to 0.5 m above the water level in the source. This may take up to 15 seconds.

Submerge the 3 m hose in water to displace the air. Connect the 3 m supply hose to the pressure washer ensuring that the inlet strainer remains submerged in the water source.

Run the pressure washer with the lance disconnected until a steady flow of water appears from the high pressure hose. Stop if this has not been achieved within 25 seconds and check all the connections. Switch off and connect the lance and nozzle to operate.

It is important to ensure that all hose and coupling connections are of good quality, air tight and that all washers are in good condition and correctly seated in place. Failure to do so may affect the self priming performance.

### Water Tanks with outlet connections

When connecting the pressure washer to a water tank with a suitable tap outlet, first connect the supply hose (not provided) to the tank outlet, open the tap to allow the water to displace all the air in the hose and then connect to the pressure washer.

## Troubleshooting

Problem	Possible Cause	Corrective Measure
Motor refuses to start	Plug not connected	Connect plug
	Mains socket faulty	Use another socket
	Circuit breaker activated/fuse blown	Reset the circuit breaker/Change the fuse and/or switch to another circuit with higher ampere consumption.
	Extension cable damaged	Try without extension cable
	Motor protector has activated	Allow to cool for 15 minutes
	Frozen	Wait for pump/water supply hose/accessory to thaw
Motor stops	Circuit breaker activated/fuse blown	Reset the circuit breaker/Change the fuse and/or switch to another circuit with higher ampere consumption.
	Wrong mains voltage	Check that mains voltage corresponds to specifications on the model tag
	Motor protector has activated	Allow to cool for 15 minutes

Problem	Possible Cause	Corrective Measure
Circuit breaker activated	Circuit breaker rating too low	Switch to another circuit that allows for higher power consumption.
Motor starts but no pressure	Nozzle partly blocked	Clean nozzle
Motor "sounds" but no function	Insufficient power supply	Check that the voltage of the mains power supply line is the same as that on the plate.
	Voltage loss due to use of extension cable	Check characteristics of extension cable
	Appliance not used for a long period of time	Contact your Bosch Service Centre
	Problems with TSS (Total Stop System) device	Contact your Bosch Service Centre
Pressure pulsating	Air in the inlet water supply hose/pump	Allow pressure washer to run with open spray handle and nozzle at low pressure until regular working pressure is obtained
	Inadequate water supply	Check that the water supply corresponds to specifications. The minimum specification for the water supply hose is 1/2" or 13 mm diameter
	Water filter blocked	Clean water filter
	Water supply hoses squeezed	Straighten out kinked water supply hoses
	High pressure hose too long	Remove high pressure extension hose. Retry (extension hose max. 7 m)
Pressure too low, but steady Note: Several types of accessory will normally deliver a lower pressure	Nozzle worn	Change the nozzle
	Start/stop valve worn	Activate trigger five times in quick succession
Motor starts up but with restricted or no working pressure	No water supply	Connect water supply
	Water filter clogged up	Clean the filter
	Nozzle clogged up	Clean nozzle
The pressure washer starts irregularly by itself	Pump/ power gun leaky	Contact your Bosch Service Centre
Water leaks from machine	Leaking pump	A slight water leak is permissible; in case of excessive leak, contact Bosch Service Centre.
No cleaning agent is dispensed	Nozzle is set to high pressure setting	Set nozzle to low pressure setting
	Viscosity of cleaning agent is too high	Dilute with water
	Deposits or blockage in the detergent circuit	Flush with clean water and eliminate any blockages. If the problem persists, please contact your Bosch Service Centre.

## Maintenance and Service

### Maintenance

- Stop, remove plug from the power supply and disconnect from water supply.

Note: To ensure long and reliable service, carry out the following maintenance regularly.

Having two filters (internal and external) increases the protection from debris entering the machine and therefore extending product life.

Ensure both filters are kept clean and clear of debris at all time.

Check for obvious defects such as loose fixings, and worn or damaged components.

Check that covers and guards are undamaged and correctly fitted. Carry out necessary maintenance or repairs before using.

In order to avoid safety hazards, if the power supply cord needs to be replaced, this must be done by **Bosch** or by an after-sales service centre that is authorised to repair **Bosch** power tools.

### After use/Storage

Turn the main switch off and operate the trigger to release any built-up pressure and drain the water from the high pressure hose.

Clean the exterior of the machine thoroughly using a soft brush or cloth. Do not use water, solvents or polishes. Remove all debris, especially from the ventilation slots.

End of season storage: Drain water out of pump running motor for a few seconds. Pull trigger to release all water.

Do not place other objects on top of the machine.

Store in a frost-free area.

Ensure cables are not trapped when storing. Do not kink high pressure hose.

### Filters

Having two filters (internal and external) increases the protection from debris entering the machine and therefore extending product life.

Ensure both filters are kept clean and clear of debris at all time.

### Environmental Protection

Chemicals dangerous to the environment must not be allowed to enter the ground, ground water or ponds, streams, etc.

For the use of cleaning agents, observe the instructions on the package and the prescribed concentration exactly.

For the cleaning of motor vehicles the local regulations should be observed: Do not allow oil sprayed off to enter into the ground water. Recycle raw materials instead of waste disposal. Recycle raw materials instead of waste disposal.

### After-Sales Service and Application Service

Our after-sales service responds to your questions concerning maintenance and repair of your product as well as spare parts. You can find explosion drawings and information on spare parts at: **[www.bosch-pt.com](http://www.bosch-pt.com)**

The Bosch product use advice team will be happy to help you with any questions about our products and their accessories.

In all correspondence and spare parts orders, please always include the 10-digit article number given on the nameplate of the product.

#### Great Britain

Robert Bosch Ltd. (B.S.C.)

P.O. Box 98

Broadwater Park

North Orbital Road

Denham Uxbridge

UB 9 5HJ

At [www.bosch-pt.co.uk](http://www.bosch-pt.co.uk) you can order spare parts or arrange the collection of a product in need of servicing or repair.

Tel. Service: (0344) 7360109

E-Mail: [boschservicecentre@bosch.com](mailto:boschservicecentre@bosch.com)

#### You can find further service addresses at:

[www.bosch-pt.com/serviceaddresses](http://www.bosch-pt.com/serviceaddresses)

### Disposal

The product, accessories and packaging should be sorted for environmental-friendly recycling..



Do not dispose of products into household waste!

#### Only for EU countries:

According to the European Directive 2012/19/EU on Waste Electrical and Electronic Equipment and its implementation into national law, power tools that are no longer usable must be collected separately and disposed of in an environmentally friendly manner.

If disposed incorrectly, waste electrical and electronic equipment may have harmful effects on the environment and human health, due to the potential presence of hazardous substances.

#### Only for United Kingdom:

According to The Waste Electrical and Electronic Equipment Regulations 2013 (SI 2013/3113) (as amended), products that are no longer usable must be collected separately and disposed of in an environmentally friendly manner.