

TurboTronic
Kitchen Electronics



INSTRUCTION MANUAL



TOUCHLESS SENSOR DUSTBIN TT-IBIN60





Dear Customer,

Thank you for choosing **iBIN** touchless sensor dustbins by **TurboTronic®**.

This automatic opening dustbin based on infrared technology removes this need. The touchless sensor operation promotes a germ-free environment. The Activated Carbon deodorizer neutralizes odors. The lid sensor uses invisible and harmless, patented infrared technology for accurate and responsive lid open and close operation. There are two buttons on the front of the lid, "OPEN" and "CLOSE", to open and close the lid manually, and an ON/OFF power switch on the back of the trash can lid. The infrared sensor on the lid will automatically open the lid when your hand or object is within 10 cm of the sensor. The lid will remain open if the sensor detects any object within its radius and will automatically close in 6 seconds after the object is withdrawn. The automatically opening and closing control system consists of computer chips, infrared detecting device, mechanical transmitting device and electrical drive system.

It is a High-Performance device, which is low in energy consumption and will give a long service-life.

IMPORTANT SAFEGUARDS

HOUSEHOLD USE ONLY. READ ALL INSTRUCTIONS.

When using electrical appliance, basic safety precautions should always be followed, including the following:



Read this user manual carefully, before you use the appliance, and keep it safely for future reference



WARNINGS

- Use this appliance only for its intended purpose as described in this manual.
- Do not immerse the Lid Cover in water because it is equipped with electronic components. You can clean it with a damp cloth.
- To prevent battery leak that potentially causes damage to the electronic components, remove batteries if the unit is not intended to be used for a long time.
- Avoid direct sunlight onto the infrared Sensor Ball.
- Do not use solvents or other chemicals to clean.
- Only use **TurboTronic®** power adapter with an output of 5.9V/500mA.
- Ensure the Sensor Ball is kept clean for normal function.
- Do not mix old and new batteries. Do not mix alkaline, standard (carbon-zinc), or rechargeable (ni-cad, ni-mh, etc) batteries.
- Clean the trash can body only with products safe for use on stainless steel.
- Do not press or force the Lid Cover to close. Lid will close automatically after your hand is removed from the sensor zone.
- Replace batteries immediately when the indication light turns yellow/amber. This will ensure the lid continues to operate properly.

- Ensure there is enough room to operate the trash can without blocking the opening and closing of the lid.
- Do not use a power adapter that is not authorized by **TurboTronic®**, it may result in fire, electric shock or injury.
- Do not use power adapter and battery at the same time to operate the trash can. It can only be powered by one source at a time.
- Do not overstuff trash bag. It may cause tearing or difficulty removing.
- Automatic parts may not be suitable for small children or pets.

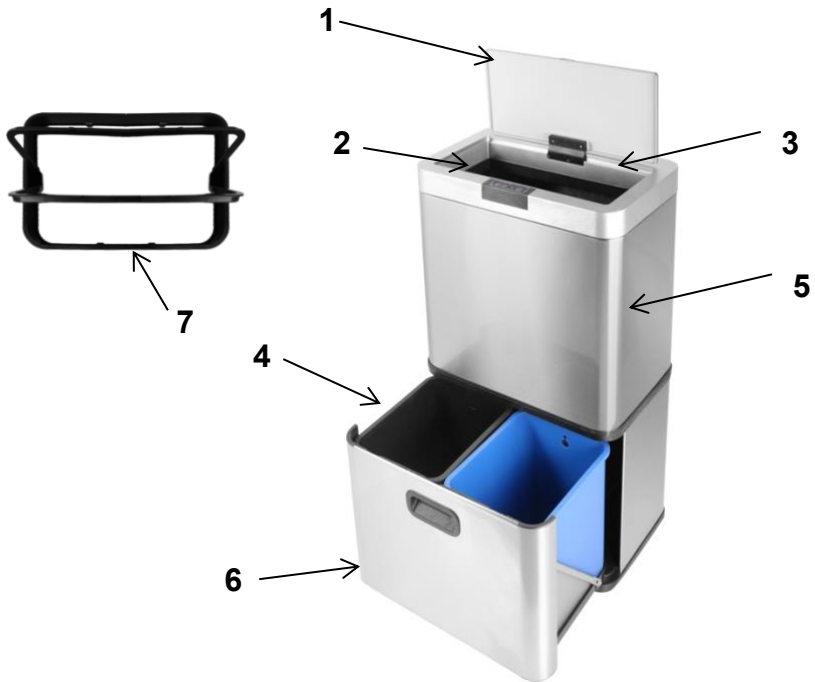
	Indicates to read and review instructions to understand operation and use of product.
	For indoor and household use only.

SAVE THESE INSTRUCTIONS

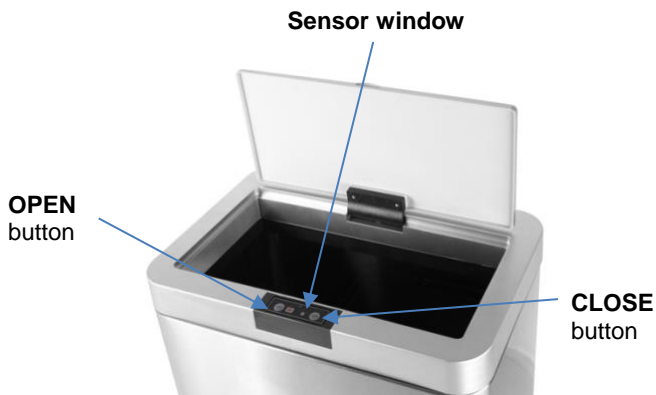
TECHNICAL DATA:

Item number	TT-IBIN60
Description	SENSOR TRASH CAN
Power supply	Adapter or 4x “C” batteries (not including)
Capacity	60 L
Dimensions (L x W x H)	42.2x27.5x73.7 cm

DEVICE OVERVIEW:



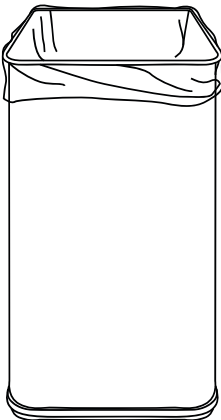
1. Lid with automatic or semi-automatic opening
2. Sensor window with automatic or manual opening and closing function
3. Removable container (40 Liters).
4. Removable container (20 Liters) with access via drawer.
5. Fingerprint resistant housing
6. Drawer on wheels.
7. Garbage bag fixed ring



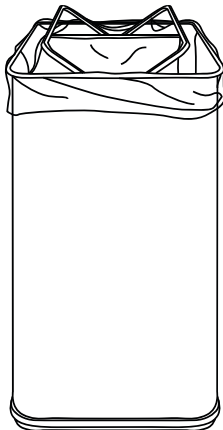
INSTRUCTION:

1. Open the battery compartment under the lid of the bin and insert four “C” type ALKALINE batteries, or connect the adapter (You can choose one of them.).
2. Turn on the power switch located at the back of the lid. The red indicator light will stay on for 3 seconds. And then flash once every three seconds to show it is in working order.
3. When you need to open the bin hold your hand about 10cm above the infrared panel. The lid will then open automatically within 0.5 seconds. And close again automatically within 6 seconds of moving your hand away. If you do not move your hand away the lid will stay open.
4. If you touch the open button on the infrared panel (a button for manual operation), the lid will open and stay open without closing automatically. This manual function is for use when you need to frequently throw rubbish away, remove the rubbish bag or clean the bin. If you want to close the lid again simply touch the close button and the circuit system will return to automatic operation.
5. A) The indicator light in the normal waiting state flashes red
(Once every three seconds)
B) When the lid opens automatically, the indicator light shows green.
C) After the lid closes automatically, the indicator light will be extinguished.
D) While the lid is opened by hand, the indicator light shows six red lights. They won't be extinguished until you touch the close button.
6. The batteries will last for an average of 6 months on the basis the bin is opened or closed 20 times each day. When the batteries are nearly flat, the indicator light will flash yellow (once every 3 seconds).
7. You can use the adapter all the time, the goods are with the adapter.

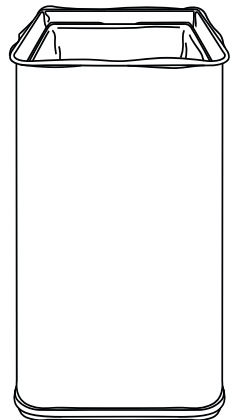
HOW THE SMART RETAINER RING WORKS:



STEP 1: Place the garbage bag inside the can body, then wrap the top of the bag over the top.



STEP 2: Place the plastic bracket on the top of the can body. The surplus will be folded up inside the can.



STEP 3: Pull up the smart ring and fix the bag on both sides.

DISPOSAL OF OLD ELECTRICAL APPLIANCES



The European directive 2002/96/EC on Waste Electrical and Electronic Equipment (WEEE), requires that old household electrical appliances must not be disposed of in the normal unsorted municipal waste stream. Old appliances must be collected separately in order to optimize the recovery and recycling of the materials they contain, and reduce the impact on human health and the environment.

The crossed out "wheeled bin" symbol on the product reminds you of your obligation, that when you dispose of the appliance, it must be separately collected. Consumers should contact their local authority or retailer for information concerning the correct disposal of their old appliance.

LIMITED WARRANTY

Limited Warranty applies to purchases made from authorized retailers of **TurboTronic®**.

TurboTronic® Warranty coverage applies to the original owner and to the original product only and is not transferable.

TurboTronic® warrants that the unit shall be free from defects in material and workmanship. Limited Warranty apply only when it is used under normal household conditions and maintained according to the requirements outlined in the Owner's Guide, subject to the following conditions and exclusions:

ANY WARRANTY OR AFTER PURCHASE SERVICE, SHOULD BE WITH A THIRD-PARTY COMPANY, FROM WHICH YOU PURCHASED THE PRODUCT. TURBOTRONIC® PROVIDES THE WARRANTY ONLY TO OUR THIRD-PARTY SUPPLIERS. SINCE THIS PRODUCT IS NOT PURCHASED DIRECTLY FROM TURBOTRONIC® BUT THROUGH ONE OF OUR THIRD-PARTY SUPPLIERS, ANY ISSUE AFTER THE PURCHASE, CUSTOMER SERVICE OR RECEIVING THE WARRANTY SHOULD BE ONLY / DIRECTLY THROUGH THE THIRD-PARTY SUPPLIERS FROM WHICH YOU PURCHASED THE PRODUCT.

What is covered by this warranty?

1. The original unit and/or non-wearable parts deemed defective, in **TurboTronic®** sole discretion, will be repaired or replaced
2. **TurboTronic®** reserves the right to replace the unit with one of equal or greater value.

What is not covered by this warranty?

1. Normal wear and tear of wearable parts (such as blending vessels, lids, cups, blades, blender bases, removable pots, racks, pans, etc.), which require regular maintenance and/or replacement to ensure the proper functioning of your unit, are not covered by this warranty.
2. Any unit that has been tampered with or used for commercial purposes.
3. Damage caused by misuse, abuse, negligent handling, failure to perform required maintenance (e.g., failure to keep the well of the motor base clear of food spills and other debris), or damage due to mishandling in transit.
4. Consequential and incidental damages.
5. Defects caused by repair persons not authorized by **TurboTronic®**. These defects include damages caused in the process of shipping, altering, or repairing the **TurboTronic®** product (or any of its parts) when the repair is performed by a repair person not authorized by **TurboTronic®**.

6. Products purchased, used, or operated outside Europe.

Illustrations may differ from actual product.

We are constantly striving to improve our products, therefore the specifications contained herein are subject to change without notice.

TurboTronic® and **Z-Line®** are registered trademarks of **Z-GLOBAL B.V.B.A.®**.

PRINTED IN PRC