

# QUICK START GUIDE

# PAINT



## Topcoat > UltraFlex LV

### STEP 01

#### Temperature



**20-25 °C\***  
**68-77 °F\***

- ✓ Air,
- ✓ Product &
- ✓ Substrate

\* Consult your Endura Representative for use outside these ranges.

### STEP 02

#### Product Preparation

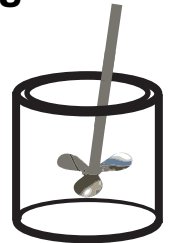


**1 Part Component A**  
**1 Part Component B**

### STEP 03

#### Mixing

**2**  
**Minutes\***

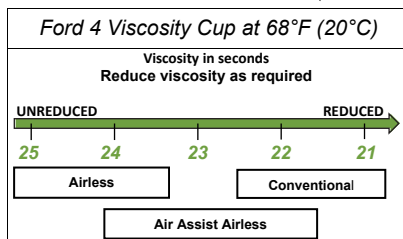


Paint must be thoroughly mixed.

\* Additional mixing time is required for metallic colors and cooler temperatures.

### STEP 04

#### Spraying Viscosity



### STEP 05

#### Spray Gun Setup



Feed Type	Fluid Tip	Application Pressures (heel of gun)	Fluid Delivery
Siphon Feed	1.6-1.8 mm	40-50 psi	
Gravity Feed	1.3-1.4 mm	30-40 psi	
Pressure Feed	1.0-1.4 mm	50-60 psi	14-16 oz/min
Air Assist Airless	9-13 Thou	1,000-1,800 psi	
Airless	9-13 Thou	1,000-3,000 psi	

### STEP 06

#### Application



**4.0 - 8.0**  
**mils wet**



**2.0 - 4.0**  
**mils DFT**

Current TDS revision 1.5

Want to learn more?

Consult the Technical Data Sheet for complete instructions.

For technical assistance call:

**1-9930**

