

Can't connect?
Need help?

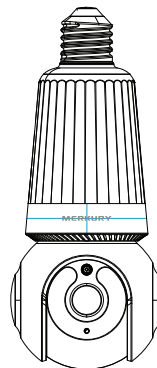
**WE
CAN
HELP**

**DO NOT
RETURN THIS
PRODUCT TO
THE STORE**

•
support.mercurysmart.com
or tap 'support' for help in the
Merkury Smart app.

MERKURY
SMART 

•
**START
GUIDE**



**SMART
LIGHTBULB
CAMERA**

Scan code for the
latest manual online



**Thank you for purchasing your Mercury Smart
home product.**

Get started using your new devices by downloading Mercury Smart, one convenient app that manages everything straight from your phone or tablet. Easily connect to your home Wi-Fi, and control multiple devices from the touch of your fingertips.

Contents

■ Start Guide

Download & Register	01
Screw In	02
Connect (QR Code)	03
Reset	04
Settings	06
Rules	08
Questions, Troubleshooting, Notices	09

■ Voice Control Guide

Google Home	12
Amazon Alexa	14

FCC Notice:

This equipment has been tested and found to comply with the limits for a Class B digital device, pursuant to part 15 of the FCC Rules. These limits are designed to provide reasonable protection against harmful interference in a residential installation. This equipment generates, uses and can radiate radio frequency energy and, if not installed and used in accordance with the instructions, may cause harmful interference to radio communications. However, there is no guarantee that interference will not occur in a particular installation. If this equipment does cause harmful interference to radio or television reception, which can be determined by turning the equipment off and on, the user is encouraged to try to correct the interference by one or more of the following measures:

- Reorient or relocate the receiving antenna.
- Increase the separation between the equipment and receiver.
- Connect the equipment into an outlet on a circuit different from that to which the receiver is connected.
- Consult the dealer or an experienced radio/TV technician for help.

Caution: Any changes or modifications to this device not explicitly approved by manufacturer could void your authority to operate this equipment.

This device complies with part 15 of the FCC Rules.

Operation is subject to the following two conditions: (1) This device may not cause harmful interference, and (2) this device must accept any interference received, including interference that may cause undesired operation.

The device has been evaluated to meet general RF exposure requirement.

03

- Authorize your account with Smart Home Skills using the username and password from your Mercury app.

04

- Choose "Discover Devices." After a few seconds your Mercury Smart devices will be displayed under Smart Home in the Alexa app.

Discover Devices

Smart Home devices must be discovered before they can be used with Alexa.

CANCEL

DISCOVER DEVICE

- You can rename your devices in the Mercury Smart app, and Alexa will refer to them by the same name. So if you rename a smart bulb to "Living Room" or a nickname like "Blossom," then Alexa will use that same name later on.

Alternatively, you can create an Alexa group, like "Bedroom" or "Downstairs," and add the device to the group.

Alexa will recognize the group name in the Alexa app, or the device name in the Mercury Smart app.

Amazon Alexa



To control your Mercury Smart bulbs, plugs or surge protectors, just ask Alexa. Make sure your devices are already set up using the app.

Things you can say*:

"Alexa, show Living Room Camera."
"Alexa, show me the kids room Camera."



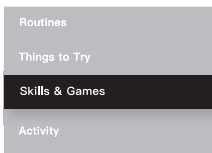
Stream to:

Amazon Echo Show, Amazon Fire TV, and any Alexa-enabled TV or screen.

*Some commands require compatible devices.

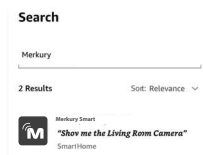
01

- Open the Alexa app and go to Skills in the menu.



02

- Search for Mercury Smart then tap Enable.



Important Information:

Before installing or replacing a bulb, read and follow all precautions, including the following: **CAUTION: NOT SUITABLE FOR DAMP LOCATIONS.** Do not install the device with wet hands or when standing on wet or damp surfaces. Suitable for use in operating environment between -20°C and 40°C (-4°F and 104°F). Not for use in totally enclosed luminaries. This device is not intended for use with emergency exit fixtures or emergency exit lights. Do not use with dimmers. Please make sure the voltage of the LED bulb is compatible with the main electricity of your country before connecting to a bulb holder. Ensure that the base of the bulb matches the bulb holder. This device uses a non-replaceable light source. When the light source reaches the end of its life cycle, the device should be replaced.

Support:

To explore our full selection of products, visit us at: www.mercurysmart.com
If you encounter any issues, please contact us at **support.mercurysmart.com** for help.

© 2025 Mercury Innovations • 45 Broadway 3rd FL,
New York NY 10006.

The illustrated product and specifications may differ slightly from those supplied. iPhone, Apple and the Apple logo are trademarks of Apple Inc., registered in the U.S. and other countries. App Store is a service mark of Apple Inc. Google, Android, Google Play and Google Home are trademarks of Google LLC. iOS is a registered trademark of Cisco in the U.S. and other countries and is used under license. Amazon, Alexa and all related logos are trademarks of Amazon.com, Inc. or its affiliates. All other trademarks and trade names are those of their respective owners.

Made in Vietnam

START GUIDE

What's in the Box



- Smart Lightbulb Camera



- User Manual



- E26 to 120V Adapter

Get Ready



- Know your Wi-Fi network and password



- Turn ON Wi-Fi



iOS



Android

- Mobile device running the latest version of iOS® or Android™ or its two previous versions.



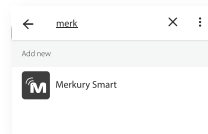
E26

- Find an existing light socket (E26 base)

Google Home

03

- Choose "Merkury Smart" from the list of Home Control partners.



04

- Authorize your account with Google Home using the username and password from your Merkury Smart app.



Now your Google Home app and Merkury Smart devices are linked!

You're now able to say "Hey Google" and control your Merkury Smart devices.

- At any time, go into the "Home Control" section of the Google Home app to set nicknames and rooms for your devices. **You can rename your devices in the Merkury Smart app, and Google Home will refer to them by the same name.**

So if you rename a smart bulb to "Living Room" or a nickname like "Blossom," then Google Home will use that same name later on. You can always give it a nickname using the Google Home app as well. **You can also assign bulbs to a specific room, like "Bedroom" or "Kitchen."**

Google Home will be able to control devices by room.

Google Home



To control your Mercury Smart bulbs, plugs or surge protectors, just say "OK Google," or "Hey Google," and ask. Make sure your devices are already set up using the app.

Things you can say*: Stream to:

"Hey Google, show me the Living Room Camera."
"Hey Google, what's on Kid's Room Camera?"

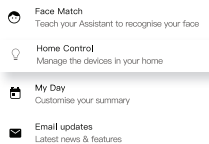


Google Home Hub, Google Home Smart Displays, Google Nest Hub, and any Google Chromecast-enabled TV, screen, or PC

*Some commands require compatible devices.

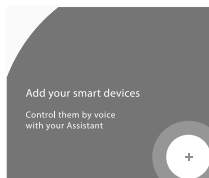
01

- Open the Google Home app and go to Home Control in the menu.



02

- Tap the "+" button.



Download & Register

STEP 1

- Download the **MERKURY SMART** app from App Store or Google Play.

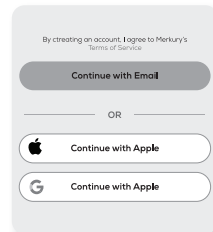


- Register an account on your Mercurly Smart app.

01.
Enter your email address.

02.
Enter the verification code and create a password.

03.
Log in to the App.



Screw In

STEP 2

■ Screw In

Screw in the bulb camera and turn on the power.



■ Add device (QR Code)

01.
Make sure the indicator light is flashing blue, indicating it's ready to connect.



02.
In the app, tap the "Devices" tab on the bottom and tap "+" in the top corner of the Devices screen.

VOICE CONTROL GUIDE

Thank you for purchasing your Mercury Smart home product. Make sure your devices are already set up using the app, then follow these steps.

Name and Control Each Device by Voice



Contents

■ Voice Control Guide

Google Home	12
Amazon Alexa	14

■ What's the wireless range?

The range of your home Wi-Fi is heavily dependent on your home router and the conditions of the room. Check with your router specifications for exact range data.

■ If my Wi-Fi/Internet goes down, will it still work?

Mercury Smart products need to be connected to Wi-Fi in order to use them remotely.

Troubleshooting

■ Cannot connect to your Wi-Fi network.

Make sure you entered the correct Wi-Fi password during the Wi-Fi setup. Check whether there are any Internet connection problems. If the Wi-Fi signal is too weak, reset your Wi-Fi router and try again.

Reset the device

- With the bulb unplugged, press the reset key until it plays a sound. After plug-in the bulb to power, and when it plays a sound again it is ready for pairing.

System Requirements

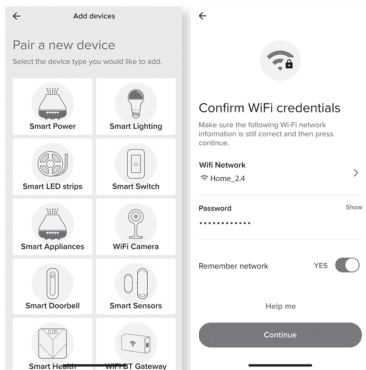
- Mobile device running the latest version of iOS® or Android™ or its two previous versions.
- Existing light socket (E26 base)
- Existing Wi-Fi Network

Technical Specifications

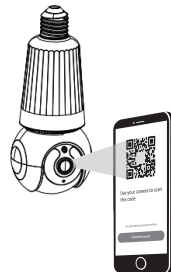
- Resolution: 2560 x 1440
- Frame Rate: 15 fps
- Viewing Angle: 95°
- Pan & Tilt Degrees: 355° (H) 9° (V)
- Storage: Supports up to 128GB microSD card (Not included)
- Power Input: AC 110V-240V
- Light Brightness: 800lm
- Operating Temperature: 14° - 122°F
- Not Waterproof: Indoor Use
- Wi-Fi: IEEE 802.11n, 2.4 or 5GHz

Add Device (QR Code)

03. Choose "Wi-Fi Camera" and enter your Wi-Fi details.

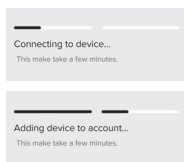


04. Scan the QR code with the camera. When you hear the camera beep, select 'I heard the sound' and it will add your camera.

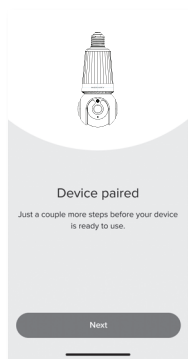


05. The Mercury Smart app will attempt to connect. This may take a few moments.

Reset



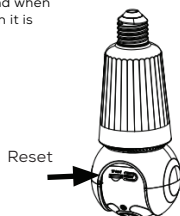
06. The indicator light will turn solid blue when the device has connected successfully!



■ Reset

***How do I reset the device?**

With the bulb unplugged, press the reset key until it plays a sound. After, plug-in the bulb to power, and when it plays a sound again it is ready for pairing.



Questions, Troubleshooting, Notices

Frequently Asked Questions

■ Can I share with family and friends?

Yes, you can share your bulbs with family and friends who will have access to control your bulbs, plugs, cameras, and other devices. In the app, press the Profile button and click on the "Device Sharing" button, and you will be able to give or revoke sharing permissions. In order to share, the other user should already have downloaded the Mercury Smart app and registered a new account.

■ Can I group multiple Mercury devices together?

Yes, you can group multiple devices of the same type together, by room, location, or however else you want. The same devices can be in multiple groups. (For example, create a group for "Bedroom" and another group for "Entire House", and your Bedroom lights can be included in both groups). From your main device list, click on one of the devices you want to group. Press the "... " button on the top right for advanced settings, and click Create Group. You'll then be able to choose which devices you'd like to group together and will be able to rename them.

■ How many devices can I control?

Mercury Smart app can control an unlimited amount of devices in an unlimited amount of locations. Your router may have a limit of how many devices can be connected to one router.

■ My device has a funny name. How do I rename it?

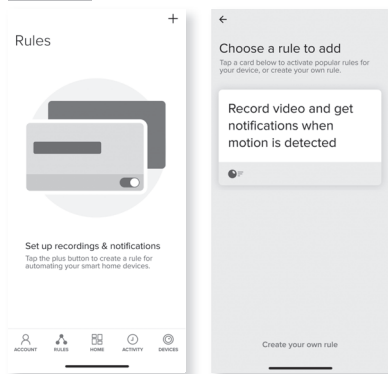
From your main device list, click on one of the devices you want to rename, press the "... " button on the top right for advanced settings, and click Modify Device Name (or Modify Group Name, if applicable). You'll then be able to choose a more familiar name.

■ The bulb appears offline or unreachable, what should I do?

Check the light switch and make sure that it's switched ON. The light bulb requires an "always-on" power supply to operate properly. Make sure your Wi-Fi router is online and in range. Make sure you have the latest functionality by clicking "Check for firmware update" in your device settings.

Rules

RULES



Create Motion & Sound Detection Rules

01. Select the "Rules" tab on the bottom navigation bar and tap the "+" at the top corner of the screen.
02. You can use a recommended rule, like "Record video and get notifications when motion is detected", or create your own.

Add & Customize Tiles

STEP 3

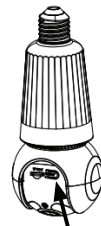
- Add tiles:



01. After successfully paired, a tile for the camera and another for the smart bulb will automatically be added to the dashboard. You can add tiles with the "+" on the Home page or resize, organize, and remove tiles by tapping "Edit".
02. Press the camera tile to view a live stream from the camera. Drag the smart bulb tile to dim, tap the corner to turn off and on, and tap the tile to access the deep tile with more features.

- (Optional) SD Card Installation

Insert microSD card where shown. Will enable video recording and playback from your phone.



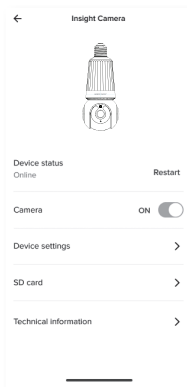
SETTINGS

■ Access Camera Settings:

From your main device list, click the camera you want to edit, then click Device Settings.

■ Device Name:

Device Name to rename your camera to something like "Family room" or "Back hallway", then click Save.



■ Motion Zones:

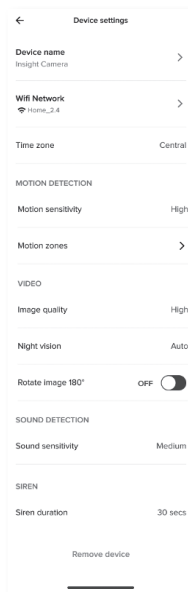
Click Motion Zones and then click on each square to deactivate or activate that zone from detecting motion, then click Save.

■ Rotate image:

If you mount your camera upside down, toggling this switch will rotate the image so that it's right side up.

■ Remove Device:

Delete the camera from your account. Until it's deleted, it will always be linked to your account.



This device complies with part 15 of the FCC Rules. Operation is subject to the following two conditions: (1) This device may not cause harmful interference, and (2) this device must accept any interference received, including interference that may cause undesired operation.

Any Changes or modifications not expressly approved by the party responsible for compliance could void the user's authority to operate the equipment.

Note: This equipment has been tested and found to comply with the limits for a Class B digital device, pursuant to part 15 of the FCC Rules. These limits are designed to provide reasonable protection against harmful interference in a residential installation. This equipment generates uses and can radiate radio frequency energy and, if not installed and used in accordance with the instructions, may cause harmful interference to radio communications. However, there is no guarantee that interference will not occur in a particular installation. If this equipment does cause harmful interference to radio or television reception, which can be determined by turning the equipment off and on, the user is encouraged to try to correct the interference by one or more of the following measures:

- Reorient or relocate the receiving antenna.
- Increase the separation between the equipment and receiver.
- Connect the equipment into an outlet on a circuit different from that to which the receiver is connected.
- Consult the dealer or an experienced radio/TV technician for help.

This equipment complies with FCC radiation exposure limits set forth for an uncontrolled environment.

This equipment should be installed and operated with minimum distance 20cm between the radiator & your body