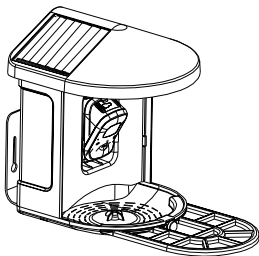




Smart Bird Feeder Camera with solar panel

Model:FBQ8

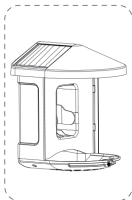


USER MANUAL

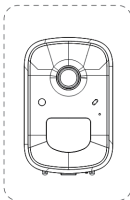
Contents

1.Packing list-----	01
2.Product appearance-----	02
3.Bird Feeder Parts Name-----	03
4.Quick start-----	04
5.Set up the camra-----	06
6.Install Bird Feeder-----	12
7.Share the camera-----	15
8.AI Recognition-----	17
9.Charge the camera-----	17
10.Indicator light status-----	18
11.Product specification-----	18
12.Firmwart upgrade-----	19
13.Fcc warning-----	19
14.FAQ-----	21

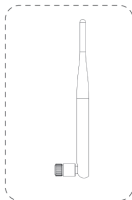
Packing list



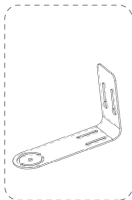
Feeder



Bird Camera



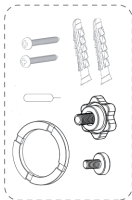
Antenna



Bird feeder bracket

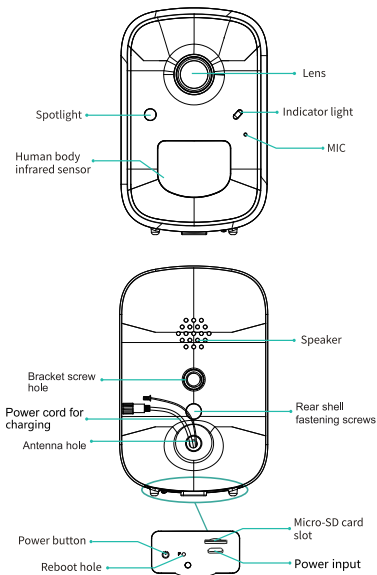


Bird stand

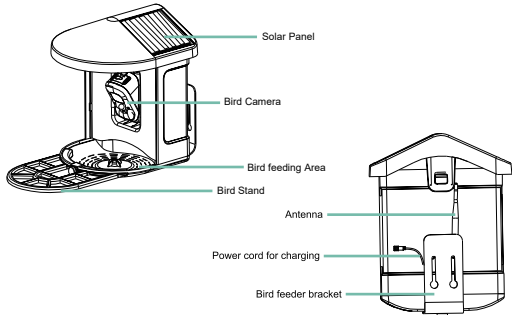


Fittings Bag

Product appearance



Bird Feeder Parts Name



1. Please install the micro sd card when the camera powered off (including 32G memory card).
2. Please use the provided Type-C charging cable to charge the camera, a full charge usually takes 10-13 hours.
3. The PIR range is 18 feet around, the recommend camera install height is 9 feet around. To avoid too much false alarms, we suggest you do not install the camera with nearby bushes, shrubs, grasses and tree leaves coming into the PIR range.
4. If the camera is mounted on a plaster, brick or concrete surface, Please mark the 2 holes that match the drill template, then use the drilling machine drills into the wall, inserts expansion screws, and fixes the bracket.

Quick start

The wireless smart battery camera supports battery-powered supply and AC-powered supply.

1. Download and install the App

The wireless smart battery camera supports Android and iOS App. For your best experience, please scan the QR code below with your mobile phone, install the app, and follow the instruction to complete the user registration.



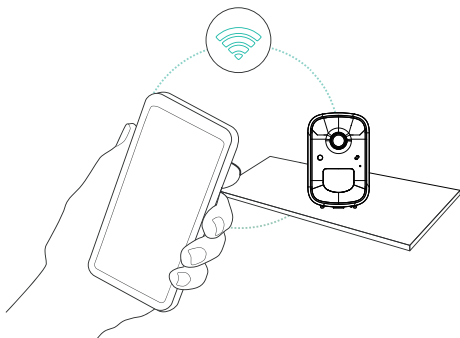
Download App



Scan QR code or go to the link to download and install the App: <https://www.vicohome.io/download/>

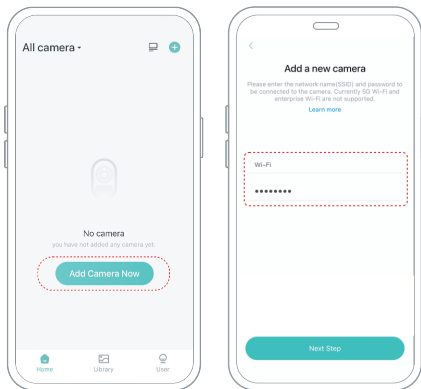
2. Add the device

Sign in to the App connect to Wi-Fi and add the device according to the prompts (please bring the device close to the router when configuring).



Set up the camera

Click the "Add Camera Now" in the App and enter the Wi-Fi network name and password that you want the camera to connect.



To ensure a longer distance connection, the camera only supports the 2.4Ghz Wi-Fi with stronger wall penetration capability and does not support Wi-Fi for enterprise-level authentication currently. Please ensure that the entered Wi-Fi meets the requirements. After completion, click "Continue" to generate the QR code for pairing the camera.



Indicator light

LED Charging Indicator

- Solid Red: The camera is running out of power
- Solid Yellow: The camera is charging
- Solid Green: The camera is fully charged

LED Power up and Pairing Indicator

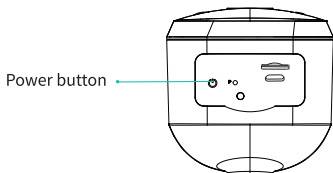
- Solid Blue: Hold the power button for 3 seconds to turn on the camera
- Flashing Blue: The cam is in pairing mode, you can start the pair up process

Note

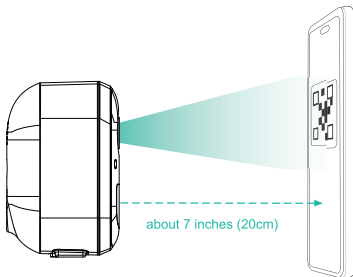
If you cannot find the right flashing blue LED, please press the power button twice very quick to refresh the camera status.

Camera Sensor	1/2.9" color CMOS Sensor
Camera Lens	M12, f: 3.3mm, F2.0, 2 Megapixel
Visual angle	Horizontal: 145° Vertical: 85° Diagonal: 185°
Video Compressing Method	H.264/H.265
Operating Environment	Temperature:14°F ~ 113°F Humidity:10% ~ 80%
Certificate	CE, FCC, RoHS, UN38.3
Size (LxWxH)	220mm*220mm*275mm
Battery Charging Voltage	DV 5V+-5%/1.5A
Protocols Supported	TCP/IP, UDP/IP, DHCP, RTMP, MUDP
Battery Capacity	5000mAh
Dustproof and waterproof	IP65
Video Storage	Cloud storage, local Micro SD card, and mobile phone memory
Recording Method	Alarm triggered recording, and manual recording
Wireless Network	2.4G Wi-Fi (IEEE802.11b/g/n)
AI Intelligent Features	Human detection, activity zone, intelligent push, pet snapshot, Package inspection, Bird Identification

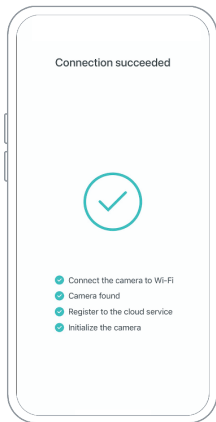
2) After pressing the camera switch for 3 seconds, the camera will turn on. The camera will emit the scanning sound "Ding Dong Ding Dong" after it is turned on (if you do not hear it, please double click the power button).



3) Take the lens of the camera facing the QR code generated on VicoHome about 20 cm (7 inches) until you hear a "Ding" sound.



4) After a while, the camera will give out a prompt sound of a successful connection. At this moment, please set the name for the device on the App and select the location you want to place the device. Click "Continue" to complete the pairing.



❗ Possible problems with binding:

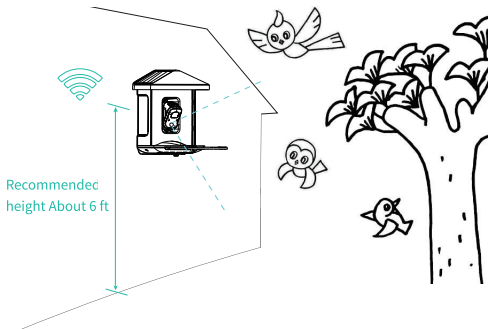
- When you hear the "**Wi-Fi Password Error**", please check whether the Wi-Fi password you entered in the App is correct;
- When you hear the "**Authentication error**", please ensure that your Wi-Fi network is not an enterprise-level network, and the device supports only the network with the security level below WPA-2;
- When you hear the "**Wi-Fi not found**", please check whether you select or enter the correct Wi-Fi name, and place the device near the Wi-Fi router and ensure that the router is powered on. Please note that 5Ghz Wi-Fi cannot be searched by the device;
- When you hear the "**Retrieving IP timeout**", it indicates that the number of devices connected to the router in your home is too many to connect more devices. Please remove some of the connected devices that are not commonly used or restart the router to clear the unconnected devices. You may need to contact the router administrator;
- When you hear the "**Cloud service connection fail**", please check whether your router is connected properly to the external network. When you hear this error prompt, it is common on the condition of network disconnection or that the selected router in your home is a local area network server. Please ensure that the network connection is normal, and try to temporarily turn

Install Bird Feeder

You can install the bird feeder on the wall for use, or you can install it on a tree for use. or you can install it on a tree for use.

1) Select a good spot for your bird feeder:

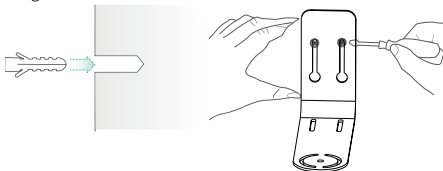
Please choose a suitable place for your bird feeding device. It is best to be an active place with birds, but you need to ensure the coverage of the Wi-Fi network. Adjust the angle of the camera to cover as much of the bird-watching stand as possible.



(2) Install the bracket

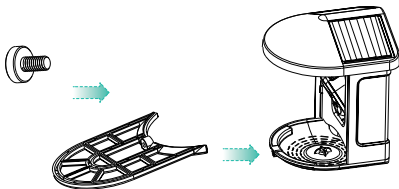
1)Screw fixing:

Use a drill tool to drill holes in the wall according to the spacing of the brackets. It is recommended to mark the holes on the wall with a pencil before drilling. Screw the expansion nut into the holes on the wall, and then connect the bracket to the expansion nut with screws to complete the fixing.



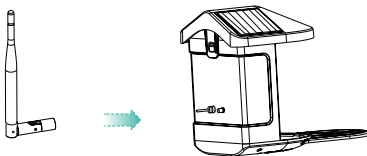
2)Install the bird station:

Align the bird station with the screw hole of the feeder, and then rotate it to the tightened state.



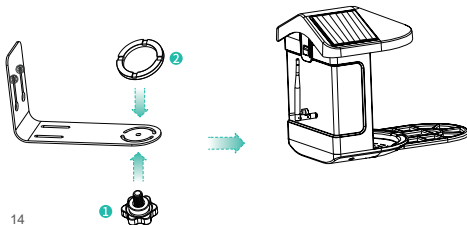
3) Install an external antenna

Position the external antenna at the back antenna hole of the bird feeder and tighten the rotating antenna.



4) Installation of bracket and Bird Feeder

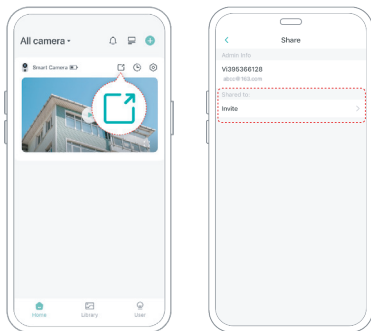
The plum-blossom screw is aligned with the bracket hole, and the screw hole at the bottom of the bird feeder is tightened through the non-slip soft rubber ring.



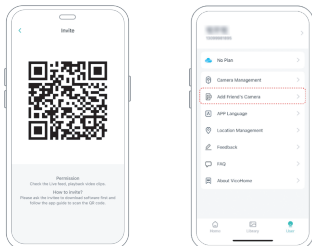
Share the camera

When you need to view the camera with other family members or friends, you can use this function. Only the administrator whose account is bound with the camera for the first time can share and set the device. Other members can only view the live or playbacks of the device.

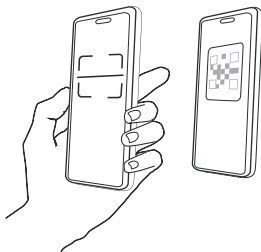
1) Find the camera you want to share on the App homepage or camera setting page. Click the share button and enter the sharing page.



- 2) Click "Invite", and a QR code will be generated for sharing.
- 3) For the members you need to share, find "Add Friend's Camera" on the "User" page to enter the scanning page.

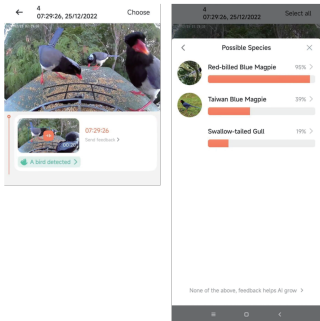


- 4) Scan the QR code generated on your mobile phone, and you will receive the confirmation notification after success. The sharing will be completed after you agree.



AI Recognition

A bird came to the bird feeder and triggered the camerarecording and AI recognition.



Charge the camera

The App will remind you to charge your camera when the battery is low. Please use the Micro USB cable to plug into the 5V/1.5A charging adapter to charge the camera. During charging, the camera's indicator light is solid yellow, and when the camera is fully charged, the indicator light will turn into solid green. It will take 14 hours to fully charge the camera.

Indicator light status

Mode	Status
Working mode	Blue
Sleep mode	Off
Charging mode	Yellow
Fully charged mode	Green

Product specification

Item	Specification
Camera lens	Field of view: H145°;V85°;D185°
Image resolution	Max. 1920×1080
Video bit rate	Adaptive
Storage media	Cloud Storage, Micro SD Card
Battery capacity	5000mAH
Adapter requirement	DV 5V+-5%/1.5A
Size	220mm*220mm*275mm

Firmware upgrade

When you connect your camera through the App, it will prompt you if the latest firmware is available. You can also manually check the firmware version in the settings of the App.

- ❗ Please make sure that your camera is fully charged or connected to the power adapter before upgrading the firmware, please do not cut off the power supply during the upgrading.

FCC warning

This device complies with part 15 of the FCC Rules. Operation is subject to the following two conditions:

- (1) this device may not cause harmful interference
 - (2) this device must accept any interference received, including interference that may cause undesired operation.
- Any changes or modifications not expressly approved by the party responsible for compliance could void the user's authority to operate the equipment.

NOTE: This equipment has been tested and found to comply with the limits for a Class B digital device, pursuant to Part 15 of the FCC Rules. These limits are designed to provide reasonable protection against harmful interference in a residential installation. This equipment generates, uses and can radiate radio frequency energy and, if not installed and used in accordance with the instructions, may cause harmful interference to radio communications. However, there is no guarantee that interference will not occur in a particular installation.

If this equipment does cause harmful interference to radio or television reception, which can be determined by turning the equipment off and on, the user is encouraged to try to correct the interference by one or more of the following measures:

- Reorient or relocate the receiving antenna.

- Increase the separation between the equipment and receiver.

- Connect the equipment into an outlet on a circuit different from that to which the receiver is connected.

- Consult the dealer or an experienced radio/TV technician for help.

To maintain compliance with FCC's RF Exposure guidelines, this equipment should be installed and operated with minimum distance between 20cm the radiator your body:

- Use only the supplied antenna.

FAQ

1.Q:Camera permission management: How to invite family and friends to use my camera together?

A: Open the App and select your camera on the home page. Click the share button on the home page or the "Share" in the camera settings to enter the sharing page, and then click "Invite " to generate a QR code. Your friends can now get some of the access rights by scanning the QR code in your phone.

2.Q:Why doesn't the Wi-Fi name appear when I connect to Wi-Fi?

A: On Apple devices with iOS13 and above, you need to turn on the "location permission" for the app in the system settings and change it to "allow when using."

3.Q:Will the camera show red lights when night vision is activated?

A: The built-in infrared lamp beads make the camera only show some dim red lights when night vision is activated, but the image quality is still clear under no light environment.

4.Q:What are the requirements for Wi-Fi?

A: Please use a 2.4GHz wireless network. The device does not support the 5GHz wireless network. Meanwhile, please set the Wi-Fi authentication method to WPA2-PSK or other lower level of security method. A password is required.

5.Q:How far should the camera be placed from the router?

A: After testing, the Wi-Fi connection distance can normally reach up to 220 meters in the open area. However, the actual situation depends on the strength of Wi-Fi and its surrounding environment (thick walls, electromagnetic devices, large metal objects will all cause interference to the Wi-Fi signals). If the camera connection signal is weak or unstable, please place the camera as close to the router as possible.

6.Q:What is the maximum length of recording time?

A: If you set the duration as "Auto", when someone occurs in the view of the camera, it will start recording a video for up to 3 minutes.

7.Q:How to quickly view videos by category?

A: Click the icon in the upper left corner of the "Library" page to start filtering videos by category. Select the category you want to see and then click "Save" to view the video playbacks.

8.Q:What should I do when the device is in malfunction?

A: Long press the power bottom for 3 seconds to restart it. If there is no response, you can remove the rubber plug at the button of the camera. Press the reboot hole with a pointed object to restart the camera.

9.How long does the battery last? How is it charged?

It depends on the working time of the camera, the battery can last 3 months when keeping standby without charging. If you connect the charging cable to the solar panel for a continuous charge during daylight, you can constantly have the stream running for years. If the weather isn't good for a long time, you can take off the camera and charge it indoors.

10.Why the identified result is wrong?

The resulting accuracy depends on the angle and clarity of the bird pictures. To ensure get a correct result, please ensure the picture is clear enough, the identified features (bird head, tail, wings, or pattern on feathers) are not covered by obstacles, and the bird occupies the main position of the picture. If there are two or more bird species in one picture, the identified result will be the one in the main position.

11.Is the Bird Lover APP compatible for both Android and Apple?

Of course! APP is compatible with Android and Apple.

12.How long is the connection distance of the bird feeder?

The connection distance is about 15m between Wi-Fi and bird feeder.