

# COMMERCIAL ELECTRIC GLASS POLISHER

## Operating Instruction Manual



GP-100



GP-3MINI



For California Customers  
**WARNING:** Cancer and Reproductive Harm -  
[www.P65Warnings.ca.gov](http://www.P65Warnings.ca.gov)

Model	Description	Voltage	Power	Amperage	Plug Type	Overall Dimensions			Product Weight
						Length	Depth	Height	
<b>GP-100</b>	5 Polishing Heads	120V~ 60Hz	1350W	12.5A	NEMA 5-15P	11-1/2" (290 mm)	9-1/4" (235mm)	19-3/4" (502mm)	38 lbs (17.3 kgs)
<b>GP-3MINI</b>	3 Polishing Heads	120V~ 60Hz	1350W	12.5A	NEMA 5-15P	10-5/8" (270 mm)	9-1/4" (235mm)	20-7/8" (530mm)	33 lbs (14.8 kgs)

### BEFORE OPERATING ANY EQUIPMENT, READ AND FAMILIARIZE YOURSELF WITH THESE USE AND SAFETY INSTRUCTIONS

*Congratulations on your WINCO® equipment purchase! WINCO takes pride in the quality of its products. When used as intended, and with proper care and maintenance, you will experience years of reliable operation from this equipment. To ensure best results, it is important that you read and follow the instructions in this manual carefully. **It's important to save these instructions for future reference.***

## Commercial Electric Glass Steamer

### Important For Future Reference

**Please complete this information and retain this manual for the life of the equipment. For Warranty Service and/or parts, this information is required.**

\_\_\_\_\_  
**Model Number**

\_\_\_\_\_  
**Serial Number**

\_\_\_\_\_  
**Date Purchased**



**WARNING: IMPROPER INSTALLATION, ADJUSTMENT, ALTERATION, SERVICE OR MAINTENANCE CAN CAUSE PROPERTY DAMAGE, INJURY, OR DEATH. READ THE INSTALLATION, OPERATION, AND MAINTENANCE INSTRUCTIONS THOROUGHLY BEFORE INSTALLING OR SERVICING THIS EQUIPMENT.**



**CAUTION: THESE MODELS ARE DESIGNED, BUILT, AND SOLD FOR COMMERCIAL USE ONLY. IF THESE MODELS ARE POSITIONED SO THE GENERAL PUBLIC CAN USE THE EQUIPMENT, MAKE SURE THAT CAUTION SIGNS, WARNINGS, AND OPERATING INSTRUCTIONS ARE CLEARLY POSTED NEAR EACH UNIT SO THAT ANYONE USING THE EQUIPMENT WILL USE IT CORRECTLY AND NOT INJURE THEMSELVES OR HARM THE EQUIPMENT.**



**WARNING: A FACTORY AUTHORIZED SERVICE PROVIDER SHOULD HANDLE ALL MAINTENANCE AND REPAIR. BEFORE DOING ANY MAINTENANCE OR REPAIR, FOLLOW SERVICE SET UP ARRANGEMENT ON PAGE 11.**

### Introduction

Congratulations on your WINCO® equipment purchase! Please take time to carefully read through this manual to ensure the equipment is operated and maintained properly, to ensure the best possible performance from the product for many years.

WINCO will not accept liability for the following if:

- The instructions in this manual have not been followed correctly.
- Non-authorized personnel have tampered with the equipment.
- Non-original spare parts are used.
- The equipment has not been handled and cleaned correctly.
- There is any use damage to the unit.

#### ***Immediately Inspect for Shipping Damage***

All containers should be examined for damage before and during unloading. The freight carrier has assumed responsibility for its safe transit and delivery. If equipment is received damaged, either apparent or concealed, a claim must be made with the delivering carrier.

- A. Apparent damage or loss must be noted on the freight bill at the time of delivery. It must then be signed by the carrier representative (Driver). If this is not done, the carrier may refuse the claim. The carrier can supply the necessary forms.
- B. If concealed damage or loss is not apparent until after equipment is uncrated, a request for inspection must be made to the carrier within 15 days. The carrier should arrange an inspection. Be certain to keep all contents and packaging material.

## Commercial Electric Glass Steamer

### Table of Contents

Specifications .....	1
Warnings .....	2
Introduction .....	2
Table of Contents .....	3
Packaging .....	3
Safety Precautions.....	4
Installation .....	4
Preparation & Operation .....	5
Cleaning, Care & Maintenance .....	6
Troubleshooting .....	7
Service & Repair .....	7
Electrical Diagram .....	7

### Package Contents

All units come with the following:

- Glass Polisher Unit
- GP-100: (4) Polishing Brushes and (1) Short Polishing Brush
- GP-3MINI: (2) Polishing Brushes and (1) Short Polishing Brush

WINCO® prides itself on quality and service, ensuring that at the time of packing, all products are supplied fully functional and free of damage. Should you find any damage as a result of freight, please contact your WINCO dealer immediately.

### Unpacking the Equipment

**DISPOSE OF ALL PACKAGING MATERIALS IN AN ENVIRONMENTALLY RESPONSIBLE MANNER.**

1. Remove all packing materials and tape, as well as any protective plastic and cardboard, from the unit.
2. Clean any glue residue left over from the plastic or tape.
3. Place the unit in the desired position and height.

**SAVE THE ORIGINAL BOX AND PACKAGING FOR USE IN PACKAGING AND SHIPPING THE EQUIPMENT IF SERVICES ARE NEEDED.**

*Thoroughly read, understand, and follow these instructions before installation and use.*

**Please keep this manual in a safe place for future use!**

### NOTE

***Please remember that this manual and the warning labels do not replace the need to be alert, to properly train and supervise operators, and to use common sense when using this equipment.***

## Safety Precautions

**Before installing and operating this equipment be sure everyone involved in its operation are fully trained and aware of all precautions. Accidents and problems can result from a failure to follow fundamental rules and precautions.**

- A WINCO® Approved Recommended Qualified Service Technician should carry out repairs if necessary. Do not remove any components or service panels on this product.
- Before handling, allow the equipment to cool after use.
- Before cleaning, switch off power and disconnect power cord from the outlet.
- **Do not immerse unit in water or use hose to clean.**
- If the power cord is damaged, it must be replaced by a WINCO® Approved Recommended Qualified Service Technician in order to avoid a hazard.
- Do not store or use gasoline or other flammable vapors and liquids in the vicinity of this or any other appliance.
- Contact your local gas supplier and ask for instructions in the event the user smells gas. This information should be posted in a prominent location.

## Installation

These instructions should be followed at all times. Failure to follow these instructions could result in injury to yourself and others.

### TO REDUCE RISK OF INJURY OR DAMAGE TO THE UNIT:

1. Read this manual thoroughly before installation and operation. DO NOT proceed with installation and operation if you have any questions or do not understand anything in this manual. Contact your representative or the manufacturer first.

	<p align="center"><b>⚠ WARNING ⚠</b></p> <p><b>Fire Hazard.</b> Correct installation precautions, procedures and regulations must be followed. Operation and safety training is necessary for all users of this equipment.</p> <p>The equipment must be installed by qualified personnel only. Correct installation precautions, procedures and regulations must be followed in order to reduce the risk of fire. Hood and fire suppression systems must be maintained per manufacturer's guidelines. Only qualified and trained personnel are to use this equipment.</p>
--	---

2. Remove the equipment from the packaging. Be certain that all protective plastics and residues are thoroughly cleaned from its surface.
3. Place your equipment on a firm level surface. Local standards and regulations should be consulted in order to abide by standards set in relation to positioning, spacing, and ventilation. Bar Maid recommends no less than 4" for a ventilation gap around the perimeter of this unit.



**CAUTION**  
Do not position or operate near combustible materials/flammable objects.

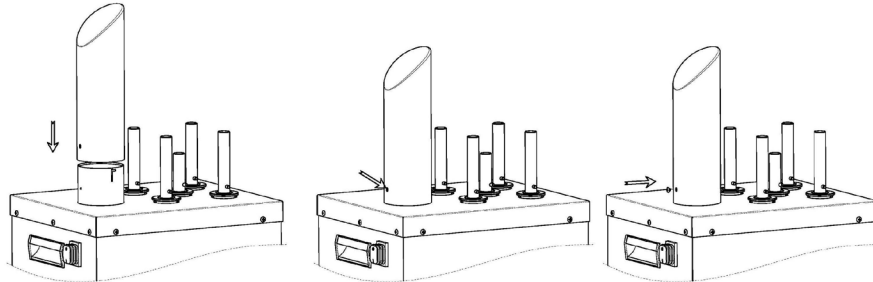
	<p align="center"><b>⚠ WARNING ⚠</b></p> <p><b>Electrical Shock Hazard</b> Keep water and other liquids from entering the inside of the unit. Liquid inside the unit could cause an electrical shock.</p> <p>Do not spray water or cleaning products. Liquid could contact the electrical components and cause a short circuit or an electrical shock. Do not use unit if power cord is damaged or has been modified.</p>
--	---

4. Proper connections and power supply are essential for efficient performance. Supply the appropriate power and connect to source; the equipment is now ready to turn on and operate. (For power supply please see technical specification on page 1).
5. The installation of the unit must conform to the NATIONAL ELECTRIC CODE, ALL LOCAL ELECTRIC CODES AND ORDINANCES, AND ALL THE LOCAL ELECTRICAL COMPANY RULES AND REGULATIONS. Additionally, we recommend a 4" spacing surrounding the unit in order to provide adequate ventilation.

	<p align="center"><b>Proper Grounding</b> <b>USE A GROUNDED OUTLET</b> <b>DO NOT ADD AN ADAPTOR TO THE PLUG</b></p> <p>This machine is provided with a three-pronged grounding plug. The outlet to which this plug is connected must be properly grounded. If the receptacle is not the proper grounding type, contact an electrician. DO NOT, under any circumstances, cut or remove the third ground prong from the power cord or use any adapter plug.</p>
--	---

## Preparation

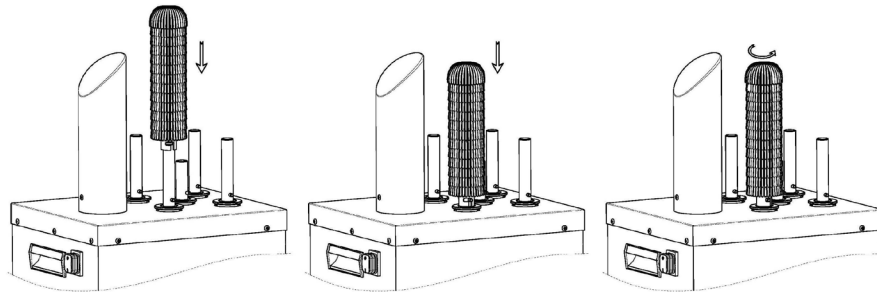
1. Install the machine on a flat surface and make sure the machine is upright and stable.
2. Attach air blower onto the base with screw provided, make sure the opening is centered.



3. GP-100: Insert short brush onto center post of the base and remaining brushes onto outer posts.  
GP-3MINI: Insert short brush onto the outer post of the base and remaining brushes onto inner posts.  
Check the brushes are securely in place.

**NOTE: Keep brushes dry for a good polisher effect, wet brushes do not dry and polish the glass.**

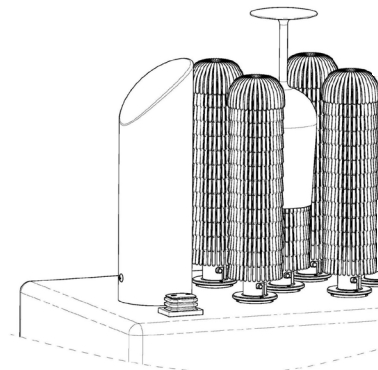
**TIP: If brushes are damp, let the machine run for 20 minutes so brushes can be dried by the hot air.**



## Operation

**NOTE: Glasses must be washed, rinsed and still damp when inserted into the glass polisher to get best results. Dry glasses are difficult to polish.**

1. Plug power cord into grounded outlet.
2. Press ON/OFF button to turn glass polisher ON.
3. Grasp glass at the base and insert onto the short brush, holding glass base stationary or with slight up and down movement while center brush dries and polishes the inside of the glass and four outer brushes dry and polish the outside of the glass.
4. Remove glass from glass polisher.
5. Press ON/OFF button to turn glass polisher OFF when not in use.



**NOTE: The motor will shut off automatically to prevent overheating. Let unit cool down for 15-20 minutes and restart the unit.**

## Cleaning, Care & Maintenance

---

### CLEANING THE GLASS POLISHER EXTERIOR

1. Ensure glass polisher is OFF and unplug power cord from the outlet.
2. Clean external surface of glass polisher daily using a dampened sponge. Do not immerse glass washer in water or spray with water.
3. Dry the surface with a soft cloth.

### CLEANING THE BRUSHES

1. Ensure glass polisher is OFF and unplug power cord from the outlet.
2. Remove brushes by rotating each brush counter clockwise and pulling upward.
3. Wash brushes with mild laundry detergent and rinse well.
4. Use hands to squeeze as much water out of brushes as possible.
5. Insert short brush onto center post of the base.
6. Insert remaining brushes onto outer posts.
7. Plug power cord into a grounded outlet.
8. Press ON/OFF button to turn glass polisher ON. The air blower will dry the brushes in a few minutes.
9. Press ON/OFF button to turn glass polisher OFF when finished or not in use.

### REPLACING THE BRUSHES

1. Ensure glass polisher is OFF and unplug power cord from the outlet.
2. Remove brushes by rotating each brush counter clockwise and it pulling upward.
3. Insert short brush onto center post of the base.
4. Insert remaining brushes onto outer posts.

## Troubleshooting

If your equipment unit does not operate, please check the following prior to placing a service call.

ISSUE	RECOMMENDED SOLUTION
The glass polisher does not work after being switched on.	Make sure glass polisher is plugged in correctly.
	Be sure it is switched on.
	Check with service center.
There is a very loud noise when the glass washer is in use.	Do not attempt to dismantle the glass washer.
	Check the brush is securely in place.
	Contact service agent right away to examine the motor and inside gears.
The brush spin cycle is slow and the glasses are not polished properly.	Check to see if something is jammed inside the brushes.
	Contact service agent right away to examine the motor and inside gears.
The brush loose or fracture	Check the brush is securely in place and holder is in correct position.
	Replace the old brushes regularly.

## Service and Repair

THIS EQUIPMENT MUST ONLY BE SERVICED BY AN AUTHORIZED AGENT.

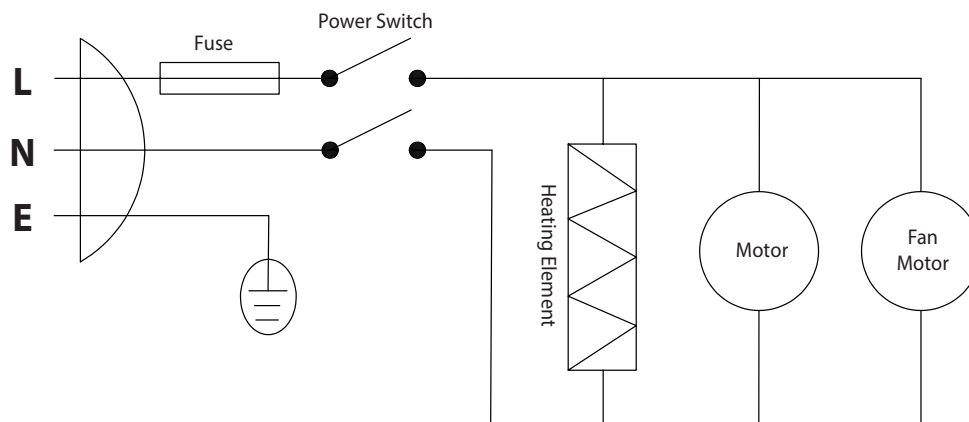
### NOTE

Parts protected by the manufacturer or its agent are not to be adjusted by the installer unless the installer is an authorized service agent.

If you have any questions or problems DO NOT send unit to WINCO® without first contacting our customer service department.

See "Limited Warranty" section on [www.winco.com](http://www.winco.com) for details.

## Electrical Diagram



Circuit diagrams have been provided to assist qualified electricians; only WINCO service agents or qualified electricians should carry out repairs if required.

Do not remove any components or service panels on this product.



Models: GP-3MINI and GP-100

[www.wincous.com](http://www.wincous.com)