

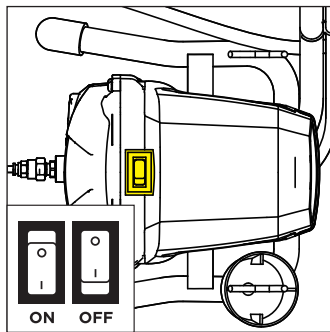
INOKRAFT MAXPRAY

Quick Start-Up Guide

KNOW YOUR CONTROLS

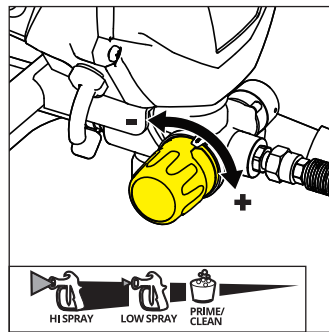
Power

NOTE: Make sure the Power is **OFF** whenever not in use



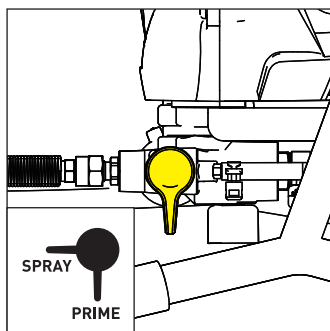
Pressure Control Knob

NOTE: Always set the Pressure Control Knob at the **LOWEST** setting whenever not in use



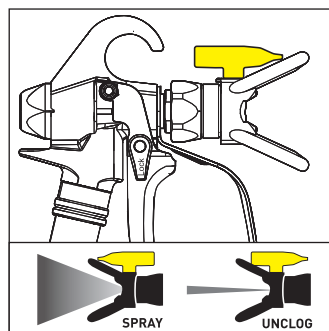
Prime/Spray Valve

NOTE: Always set the Prime/Spray Valve in the **PRIME** position between uses



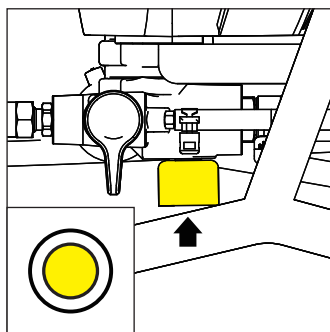
Spray Tip

NOTE: The Spray Tip has the ability to be reversed and quickly clear clogs



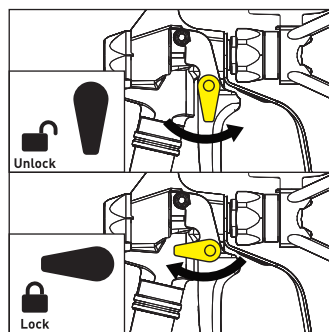
Push-Start Valve

Push twice before start-up to activate priming



Gun Trigger Lock

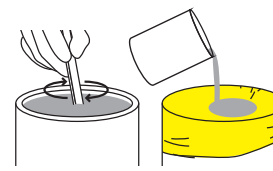
NOTE: Always keep the Trigger Lock **engaged** whenever not spraying



Read User's Manual for complete instructions and warnings. This quick guide is not a substitute for reading and understanding all instruction manuals and warning labels supplied with the equipment.

Always Stir and Strain Your Paint Before Use

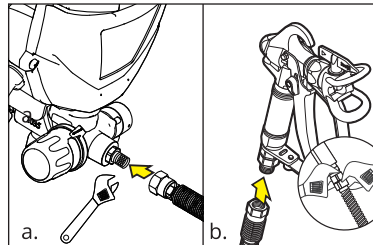
Always Clean Your Sprayer thoroughly before Next Use



SET UP

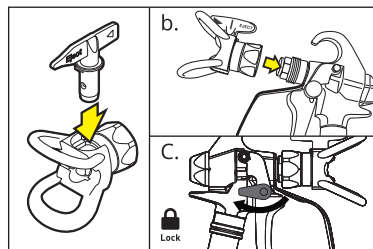
1. Assemble Your Sprayer

- Remove the caps on the Paint Hose and the sprayer. Attach and tighten the Paint Hose to sprayer.
- Connect and tighten the other end of the Paint Hose to the gun.

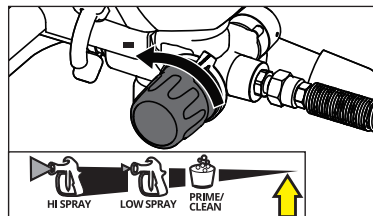


2. Spray Tip Installation

- Insert Spray Tip properly into the Spray Tip Guard.
- Screw and tighten the Spray Tip Guard assembly onto the gun.
- Engage Trigger Lock.

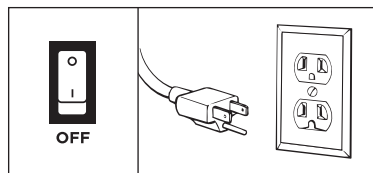


3. Turn the Pressure Control Knob to the lowest setting.



4. Plug into Grounded Outlet

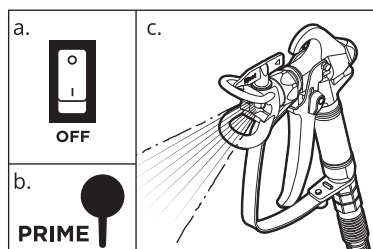
Make sure the Power Switch is **OFF** and plug the sprayer into a grounded outlet



START UP

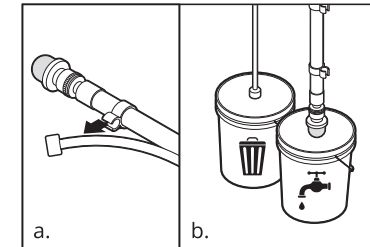
1. Pressure Relief Procedure

- Make sure the Power is **OFF**
- Turn the Prime/Spray Valve to the **PRIME** position.
- Disengage** the Gun Trigger Lock and **trigger** the gun to relieve pressure.

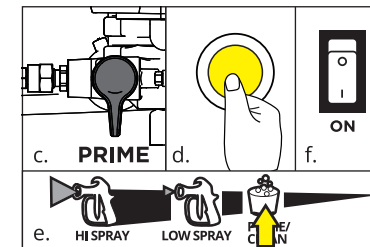


NOTE: To prevent serious injury from pressurized fluid, follow this Pressure Relief Procedure before starting or performing any cleaning and maintenance.

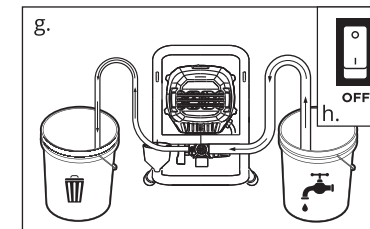
2. Quick Tube Cleaning



- Separate the Drain Tube (smaller) from Suction Tube (larger).
- Place Drain Tube in a waste pail. Submerge the Suction Tube into a pail filled with **water (for water-based paints)** or **mineral spirits (for oil-based paints)**

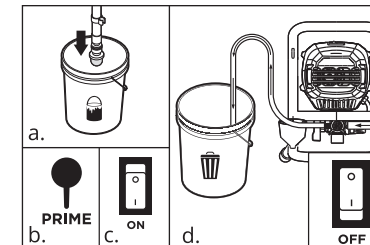


- Turn the Prime/Spray Valve to the **PRIME** position.
- Press** the Push-Start Valve twice to loosen the Inlet Valve ball.
- Rotate the Pressure Control Knob to the **CLEAN** position.
- Turn Power Switch **ON**.



- Allow fluid to flow up the Suction Tube and out of the Drain Tube and into the waste pail for 30 to 60 seconds.
- Turn Power Switch **OFF**.

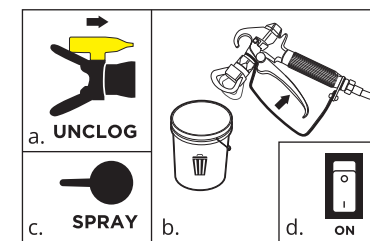
3. Prime the Pump



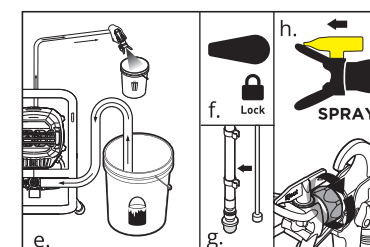
- Submerge the Suction Tube into paint.
- Check the Prime/Spray Valve remains at the **PRIME** position.
- Turn Power Switch **ON**.
- When paint comes out of the Drain Tube, turn Power Switch **OFF**.

4. Fill Hose and Gun

Ensure the **Pressure Control Knob** at **CLEAN** position.



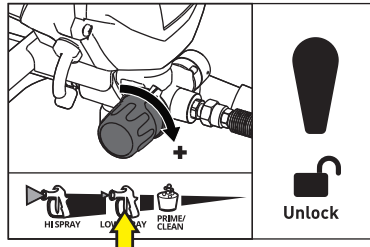
- Rotate the Spray Tip to **UNCLOG** position.
- Disengage** the Gun Trigger Lock and point it into the waste pail. **Pull and hold** the Gun Trigger.
- Turn Prime/Spray Valve to **SPRAY** position.
- Turn Power Switch **ON**.



- When paint comes out, **release** the Gun Trigger.
- Engage** the Gun trigger lock.
- Attach** the Drain Tube to Suction Tube.
- Rotate the Spray Tip back to the **SPRAY** position and ensure Spray Tip Guard is tight.

You are now ready to spray!

SPRAYING



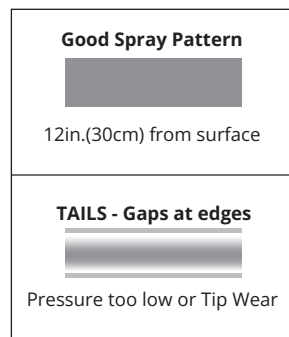
Start to Spray

- Turn the Pressure Control Knob at the **LOW SPRAY**.
- **Disengage** the Trigger Lock
- Point the gun to the scrap material and pull the trigger.
- Increase pressure as needed to create an even and good pattern.

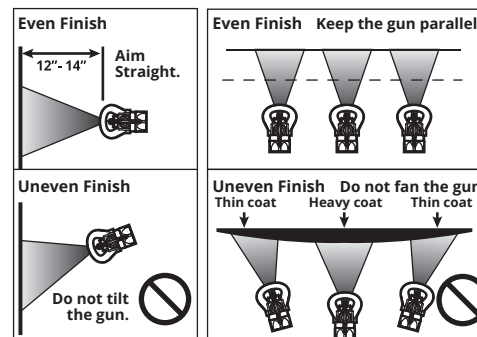
Spray Techniques

NOTE: Always test the spray pattern on a test area first

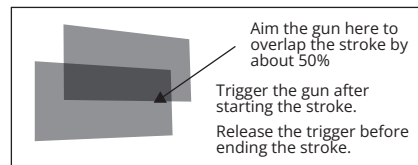
Spray Pattern Quality



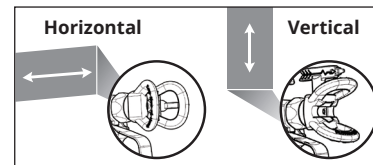
Even Finish



Trigger Gun & Aim Gun



Spray Tip Orientation



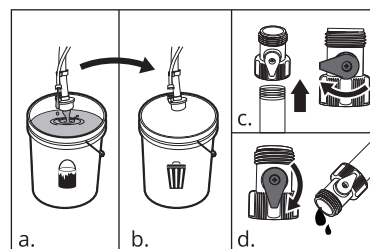
CLEAN UP

Cleaning the sprayer after each use results in a trouble-free start-up.

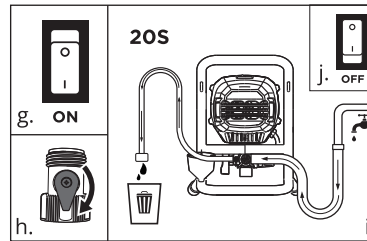
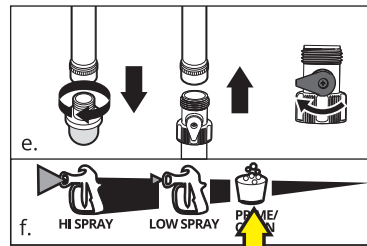
The following steps are for water-based paints only with a garden hose. See User's Manual for pail cleanup or oil-based materials (page 23)

1 Clean the Pump

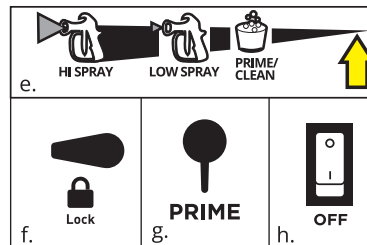
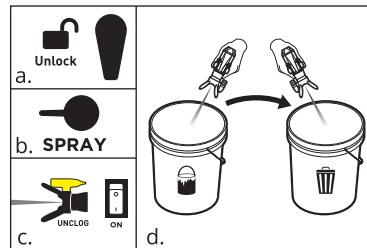
Perform **Pressure Relief Procedure** before cleanup. Check Prime/Spray Valve is in **PRIME** and Gun Trigger Lock is **ENGAGED**.



- Lift both tubes from the paint pail. Drain paint from tubes.
- Place both tubes in the waste pail.
- Screw on Flush-Ease Valve to garden hose, keep the valve closed. Connect the other end of garden hose to water tap.
- Turn on water. Open the Flush-Ease Valve and rinse paint off the two tubes.

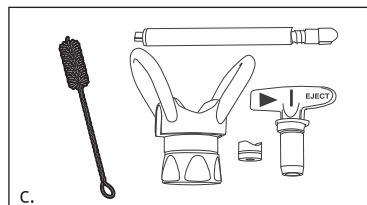
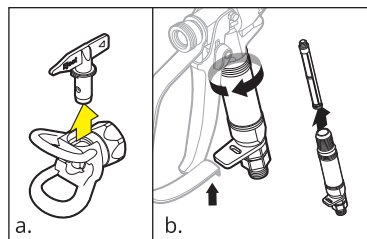


2 Clean the Paint Hose



3 Clean the Gun and the rest parts

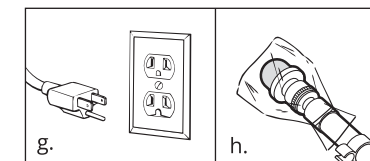
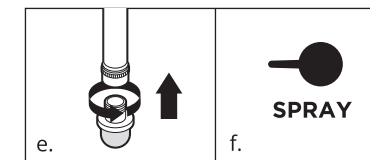
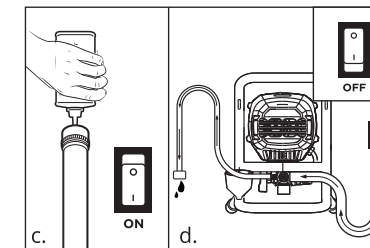
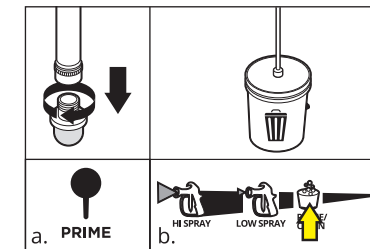
Ensure **Pressure Relief Procedure** has been performed. Check the Gun Trigger Lock is **ENGAGED**.



- Unscrew the Inlet Screen from Suction Tube. **Connect** the Garden Hose with Flush-Ease Valve to suction tube, keep the valve closed.
- Turn the Pressure Control Knob to the **PRIME/CLEAN** position.
- Turn Power Switch **ON**.
- Open flush-ease Valve.
- Circulate water through the sprayer, into the waste pail for 20 seconds.
- Turn Power Switch **OFF**.
- Disengage the Gun Trigger Lock. Trigger gun into the paint pail.
- Turn the Prime/Spray Valve to the **SPRAY** position.
- Rotate the Spray Tip to **UNCLOG** position. Turn Power Switch **ON**.
- Let water come out of the gun for several seconds to recycle the paint, then **redirect** the gun into the waste pail until water is relatively clear.
- Turn the Pressure Control knob to the **lowest** setting.
- Engage the Trigger Lock.
- Turn the Prime/Spray Valve to the **PRIME** position.
- Turn the ON/OFF switch to the **OFF** position.

LONG-TERM STORAGE

Perform **CLEANUP** before **LONG-TERM STORAGE**(more than 2 days). See User's Manual for Short-term Storage (page 26)



- Unscrew the Inlet Screen from the Suction Tube. Check the Prime/Spray Valve is in the **PRIME** position.
- Place Drain Tube in waste pail. Turn the Pressure Control Knob to the **CLEAN** position.
- While holding the Suction Tube above the sprayer, **pour** 2 ounces of Light Household Oil or Antifreezing Storage Fluid into the Suction Tube and turn Power Switch **ON**.
- When oil is flushed through the sprayer and out the Drain Tube, turn Power Switch **OFF**.
- Screw Inlet Screen back to Suction Tube. Ensure that the Spray gun and hose stay attached to the sprayer.
- Turn Spray/Prime Valve to **SPRAY** position for storage oil in the sprayer.
- Unplug the power cord (disconnect power)
- Secure a plastic bag around both tubes to catch any drips.

Questions?

Don't hesitate to drop a message at support@inokraft.com!

Join InoKraft Community for

- **INSTRUCTION VIDEOS**
- **FREE ACCESSORIES**
- **FREE TRIALS OF NEW PRODUCTS**
- **EXTENDED WARRANTY**

by sending "I'm a craftsman" and your purchase order ID to support@inokraft.com or Scan:

Official Youtube
www.youtube.com/@inokraft

