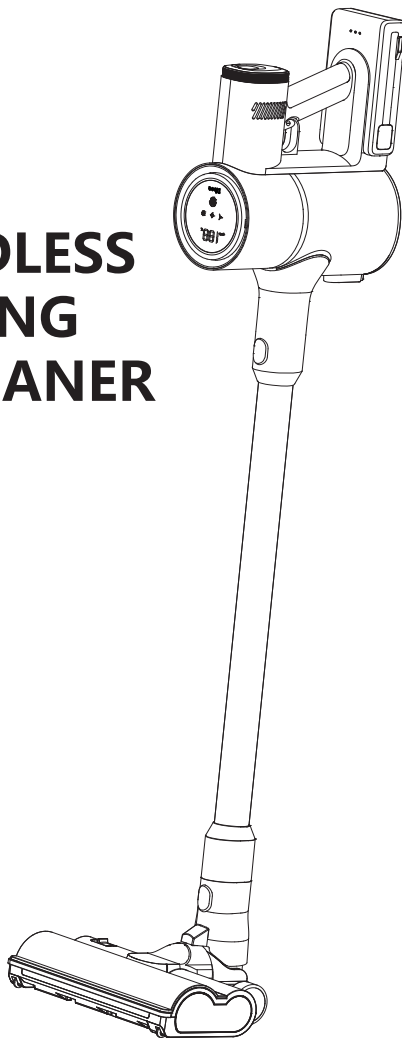


# Dibea

## Instruction Manual

### G26 SMART CORDLESS SELF-STANDING VACUUM CLEANER

Please carefully read and fully understand this Manual before using this product, and keep this Manual properly for further reference.



Official website: [www.dibea.com](http://www.dibea.com)  
Customer support: [us-support@dibea.com](mailto:us-support@dibea.com)

# Disclaimer

---

Thank you for choosing our G26 cordless vacuum cleaner. The information in this user manual affects your safety and your legal rights and responsibilities. Read this entire manual carefully to ensure proper configuration before use. Failure to read and follow instructions and warning in this document may result in serious injuries or death to yourself or others, damage to the product, or damage to other objects in the vicinity.

By using this product, you hereby signify that you have read this entire user manual carefully and that you understand and agree to abide by the terms and conditions herein. You agree that you are solely responsible for your own conduct while using this product, and any consequences thereof. You agree to use this product only for purposes that are proper and in accordance with all applicable laws, rules, and regulations, and all terms, precautions, practices, policies, and guidelines Suzhou DIBEA Electrical Technology Co., Ltd. has made and may make available.

Suzhou DIBEA Electrical Technology Co., Ltd. accepts no liability for damage, injury or any legal responsibility incurred directly or indirectly from the use of this product. The user shall observe usage and lawful practices including, but not limited to, those set forth in this documents. If your vacuum cleaner is damaged due to abuse, negligence, incorrect use or failure to configure original accessories, you will lose the right of after-sales service, and all warranty applications submitted to the DIBEA Brand Suzhou Service Center will be rejected.

This manual contains the latest information as of printing, and we reserve the right at any time, in our sole discretion, to make enhancements to, replace, modify, discontinue or add to the products, including revisions to any and all specifications for the Products. We will use reasonable commercial efforts to provide you notice of any material changes. For up-to-date product information, visit [www.dibea.com](http://www.dibea.com).

Without the permission and authorization of the Company, this publication shall be stored in the retrieval system and no one can copy or disseminate it in any form.

# Content

---

<b>IMPORTANT SAFEGUARDS</b>	1-3
<b>Product View</b>	4
<b>Use guide</b>	5-7
① Assembly	5
② Operation	5
③ Charging	6
④ Replace the battery	7
<b>Cleaning and Maintenance</b>	8-12
① Take out the HEPA filter	8
② Take off the cyclone filter	8
③ Disassemble the motorized floor nozzle	9
④ Cleaning	10
<b>Storage and Disposal</b>	13
① Storage	13
② Dispose the battery	13
<b>Trouble-shooting</b>	14
<b>Specifications</b>	15
<b>1-Year Limited Warranty</b>	16

# IMPORTANT SAFEGUARDS

---

When using an electrical appliance, basic precautions should always be followed, including the following:



READ ALL INSTRUCTIONS BEFORE USING THIS VACUUM CLEANER

Failure to follow the warnings and instructions may result in electric shock, fire and/or serious injury.

## Personal Safety:

1. **THIS IS NOT A TOY.** Close attention is necessary when used by or near children.
2. Children under 10 years old and persons with physical or mental disabilities must be supervised when using;
3. Plastic film can be dangerous. To avoid danger of suffocation, keep away from babies and children.
4. Keep hair, loose clothing, fingers, and all parts of body away from openings and moving parts.
5. Do not put any object into openings. Do not use with any openings blocked; keep free of dust, lint, hair and anything that may reduce air flow.
6. Use extra care when cleaning stairs.
7. Have servicing performed by a qualified repair person using only identical replacement parts.
8. Do not touch nozzle when the vacuum cleaner is on.
9. Use only as described in this manual. Use only DIBEА or DIBEА-authorized attachments.
10. Do not pick up hard or sharp objects such as glass, nails, screws, coins, etc.
11. Do not use without filters in place.

## Electrical Safety:

1. **KEEP AWAY FROM WATER.**
2. Keep the product away from hot objects or any heat sources.
3. To avoid excessive heat and damage to the unit or battery, the vacuum cleaner will not operate while charging.
4. Do not operate the vacuum cleaner or charger if it has been damaged in any way.

# IMPORTANT SAFEGUARDS

---

5. Do not operate the vacuum cleaner if it is not working as it should, has been dropped, damaged, left outdoors, or dropped into water.
6. Do not operate the vacuum cleaner while charging.
7. Do not use the vacuum cleaner in a non-household environment.
8. Do not unplug by pulling on the cable. To unplug, grasp the plug, not the cable. The use of an extension cable is not recommended.
9. Keep the cable away from sharp objects.
10. This charger is not intended for use by travelers.
11. Do not use extension cords or outlets with inadequate current carrying capacity for the charger.
12. When battery pack is not in use, keep it away from other metal objects, like paper clips, coins, keys, nails, screws or other small metal objects, that can make a connection from one terminal to another. Shorting the battery terminals together may cause burns or a fire.
13. Do not intend to modify the battery. Do not use a battery pack or appliance that is damaged or modified.
14. Do not pick up anything that is burning or smoking, such as cigarettes, matches, or hot ashes.
15. Do not pick up anything that is wet, moisture, not dry or use in areas where they may be present.
16. Do not pick up any dangerous chemicals or use in areas where they may be present.
17. Always turn 'OFF' the appliance before connecting or disconnecting the motorized brush bar.
18. Unplug when not in use for extended periods and before maintenance or servicing.
19. Under abusive conditions, liquid may be ejected from the battery; avoid contact. If contact accidentally occurs, flush with water. If liquid contacts eyes, additionally seek medical help. Liquid ejected from the battery may cause irritation or burns.
20. Please dispose the battery properly according to local regulations.
21. Please do not use the vacuum cleaner on any rough surfaces, such as cement pavement and asphalt pavement.
22. Please do not turn the machine upside down when replacing the filter to prevent liquid or dust from falling into the motor and causing malfunction and danger.

# IMPORTANT SAFEGUARDS

---

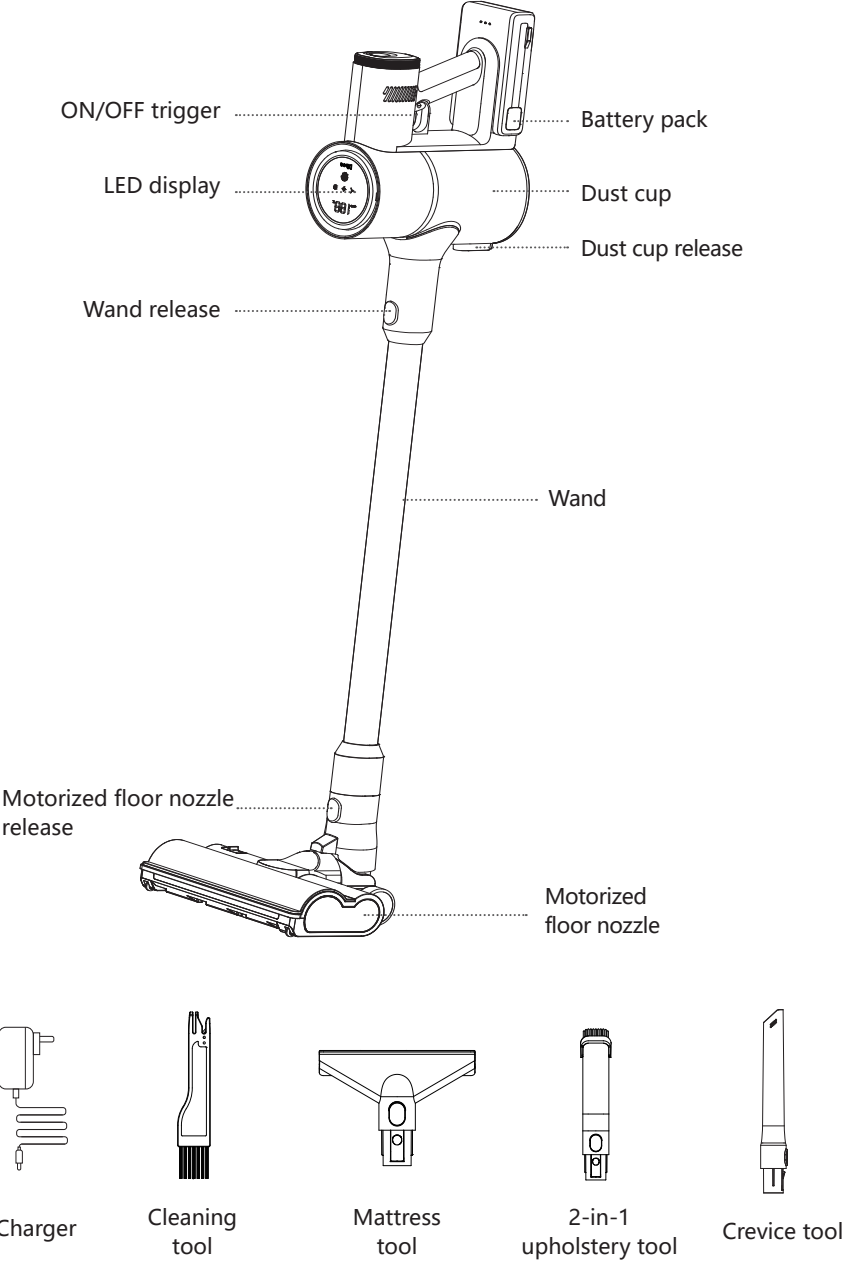
**SAVE THESE INSTRUCTIONS FOR FURTHER USE.**



**Warning:**

- 1. KEEP AWAY FROM WATER.**
- 2. KEEP AWAY FROM HEAT SOURCES.**
- 3. This DIBEА appliance is intended for household use only.**
- 4. If there' s anything wrong with this vacuum cleaner, stop operating and contact DIBEА customer service for help.**

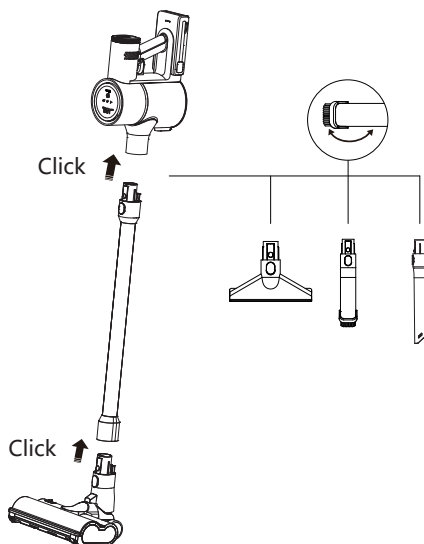
# Product View



# Use guide

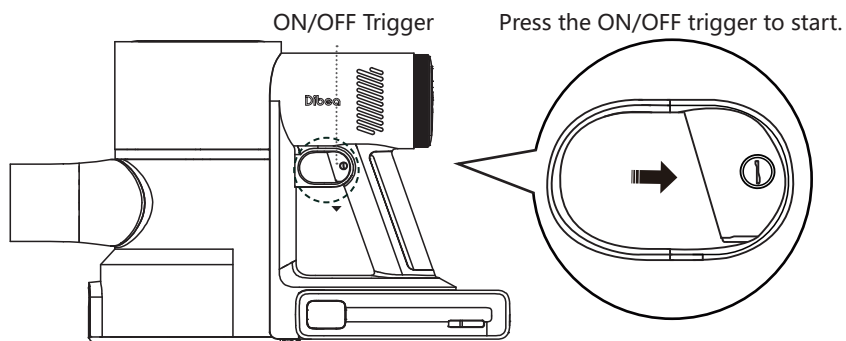
## Assembly

1. Slide wand onto hand vacuum until it clicks.
2. Push wand into the nozzle until it clicks.
3. To remove the wand/nozzle, click the red release button and pull it off.



## Operation

1. Click power button once to start/turn OFF the vacuum cleaner.

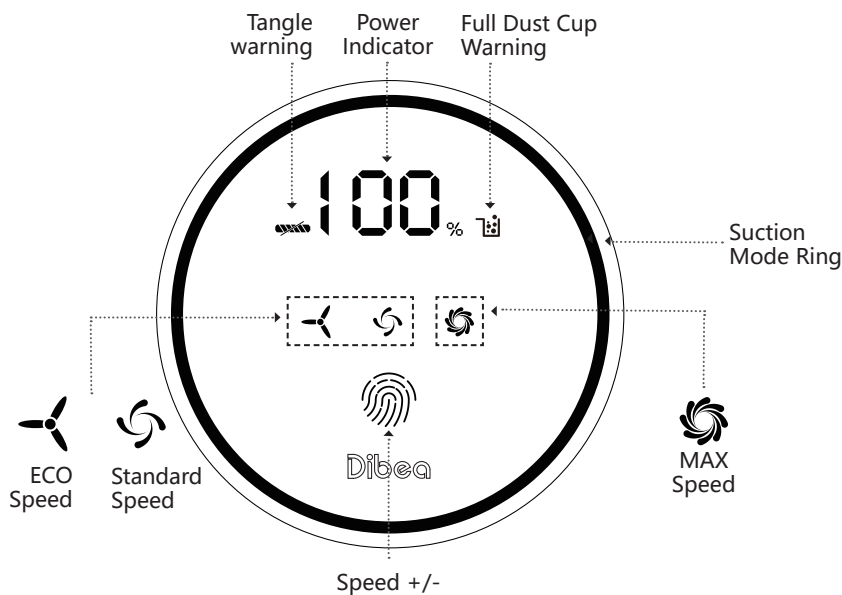


Vacuum starts at STANDARD speed.



# Use guide

2. Click the fingerprint icon in the center of the LED display to adjust desired suction modes.

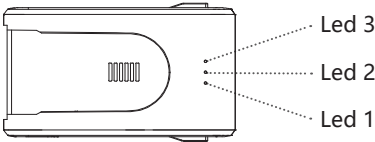


3. Press the ON/OFF trigger for the second time to stop working.

## Charging

Step 1. When the power indicator number is less than 10%, the battery power is low and needs to be charged.

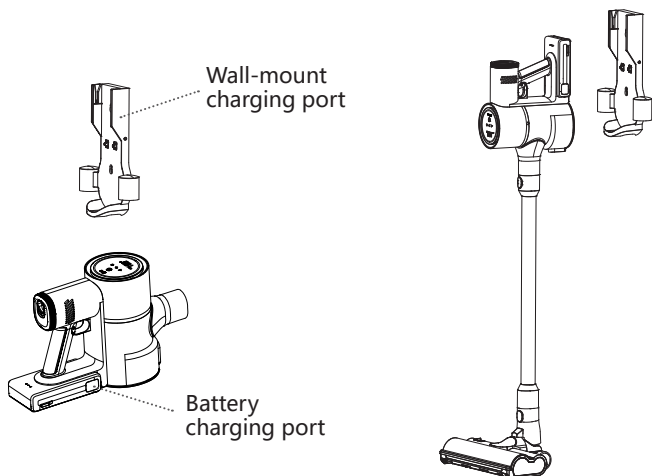
Step 2. Connect the charger to the power outlet and the charging port on the battery, a blinking blue light on the battery indicates that charging is in progress.

Battery indicating lights		
LED 1 flashing	Charging/Low-battery	
LED 1 & 2 on, LED 3 flashes	Charging	
All lights ON	Fully charged	

# Use guide

Tips:

1. Please fully charge the battery when the package arrives, and charge it at least once a month even the machine is not in use.
2. According to different requirements, there are two charging methods:
  - a. The charger is connected to the charging port on the battery to charge.
  - b. Install the wall-mount to the wall using expansion screws, connect the charger and the wall-mount, and place the vacuum cleaner on the wall-mount to charge.

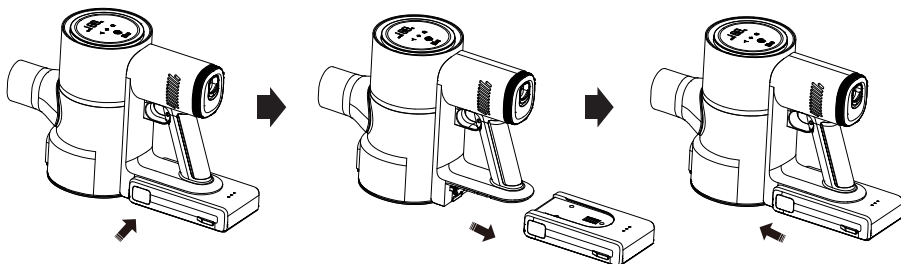


## Replace the battery

Step 1. Click the battery release button on side of the battery.

Step 2. Pull out the battery.

Step 3. Insert the battery forward.

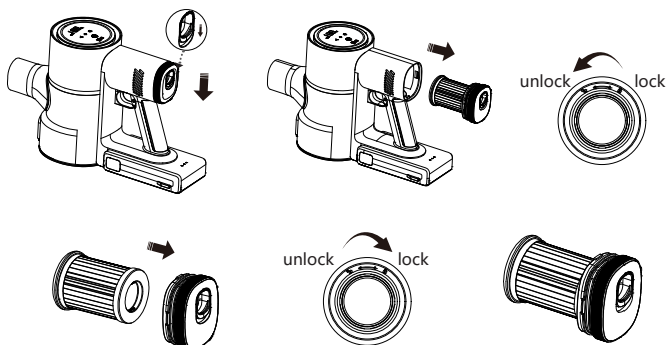


# Cleaning and Maintenance

## Take out the HEPA filter

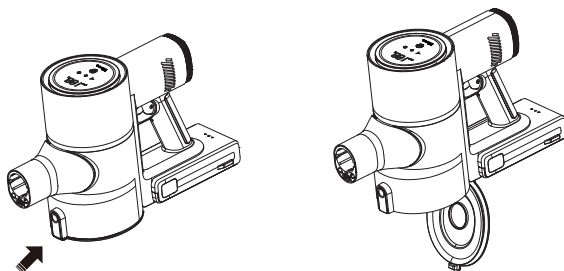
Step 1. Press the HEPA release button down, and pull it out.

Step 2. Gently twist counterclockwise the HEPA filter and take it down.

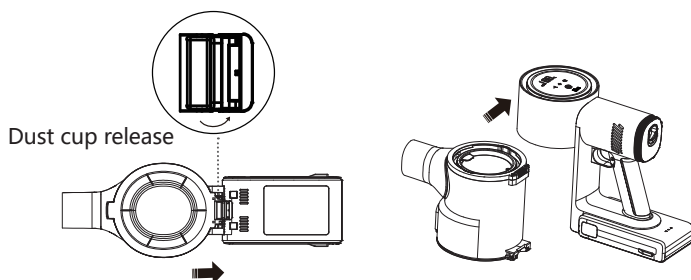


## Take off the cyclone filter

Step 1. Click the dust cup release button on bottom of the dust cup, release the dust inside.

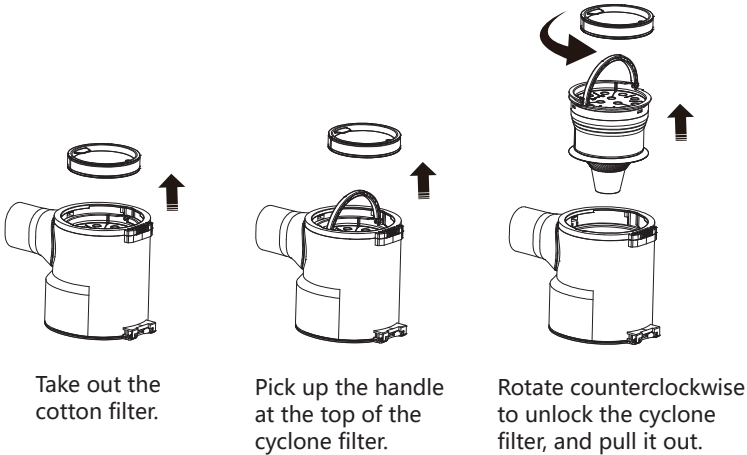


Step 2. Push the dust cup release buckle in between of the dust cup bottom and the battery in the direction of the battery, gently pull out the dust cup.



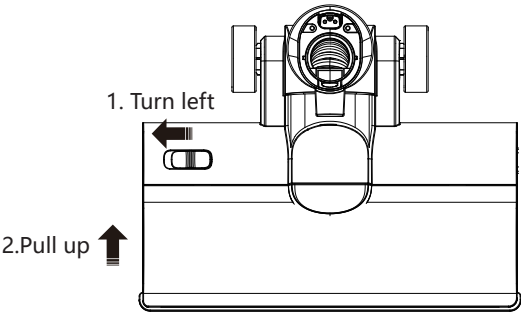
# Cleaning and Maintenance

Step 3. Pick up the handle at the top of the cyclone filter, rotate counterclockwise to unlock the cyclone filter, and pull it out.



## Disassemble the motorized floor nozzle

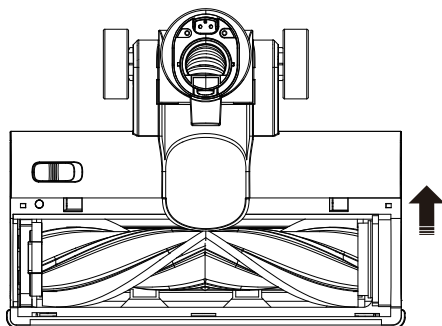
1. Pull the red toggle on top of the motorized floor nozzle to the left, and fixing it on the left position with one hand.



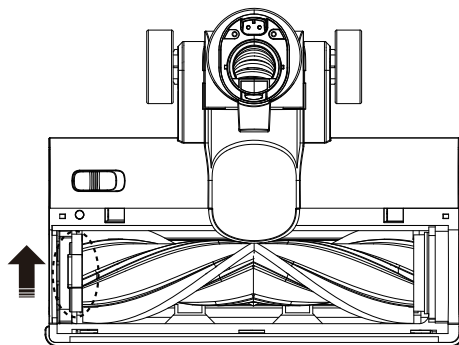
- 2. Lift the cover up to remove it with the other hand.
- 3. Lift up the white handle on the left side of the brush-roll to take it off.

# Cleaning and Maintenance

---



4. When installing the brush-roll, align the right side of the brush-roll with the snap of the motorized floor nozzle for installation, and then press the left end of the brush-roll down into the groove, and the brush-roll is installed successfully.

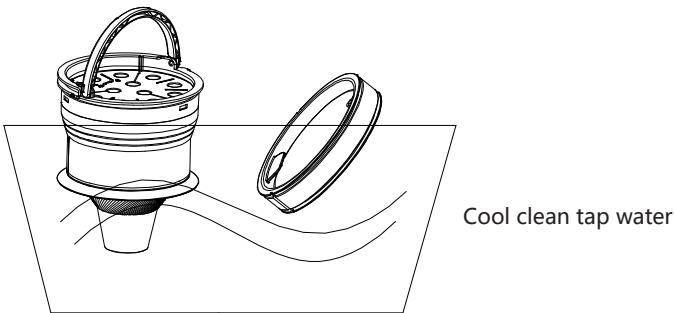


## Cleaning

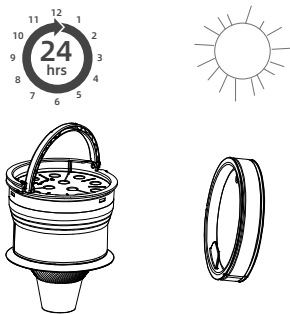
Step 1. Wash the HEPA filter, cyclone filter, cotton filter, brush-roll and dust cup with cool tap water

Note: Please wash the filter at least ONCE A month, and replace it every three to six months to remain its powerful suction.

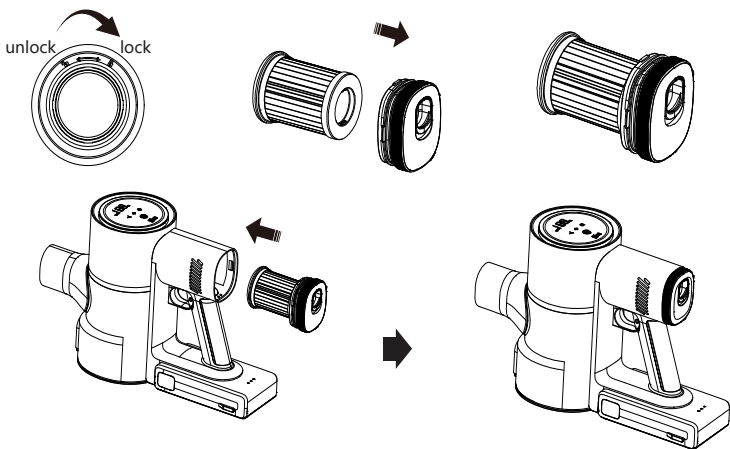
# Cleaning and Maintenance



Step 2. Let the HEPA filter, cyclone filter, cotton filter, brush-roll and dust cup **DRY COMPLETELY.**



Step 3. Make sure all the parts are DRY, and install the HEPA filter back as shown.



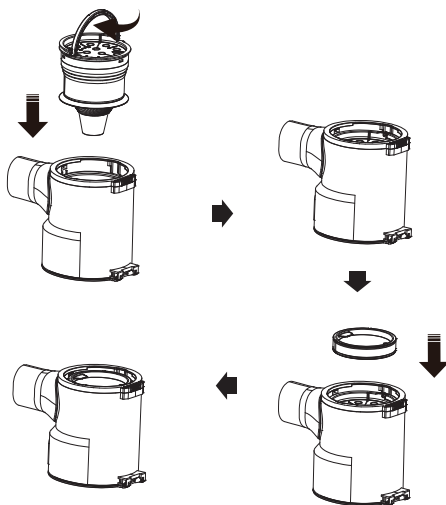
# Cleaning and Maintenance

---

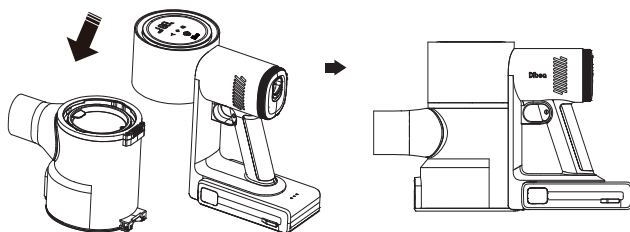
Step 4. Put the cyclone filter into the dust cup, rotate it clockwise until the "0" mark on the cyclone filter is at the middle of the dust cup hole. Press the cyclone filter down and lower the handle.

Please note: If the handle cannot be fully laid down, the cyclone filter is not installed right, please try it again.

Step 5. Place the cotton filter in the dust cup.



Step 6. Put the motor down on the dust cup, rotate the dust cup as shown.



# Storage and Disposal

---

## Storage

1. Please store the machine in a cool dry household place, and keep it away from all heat sources, moisture or water.
2. Please fully charge the battery when the package arrives, and charge it at least once a month even it is not in use.
3. Please wash the filters every three times of use, and change the HEPA filter and cotton filter after 3 months of daily use.

## Dispose the battery

1. This battery is NOT removable or serviceable by the user. If the Li-ion battery becomes damaged, contact the battery or device manufacturer for specific handling information. Even used batteries can have enough energy to injure or start fires.
2. Please do not dispose the lithium-ion batteries in household garbage or recycling bins.
3. Lithium-ion batteries SHOULD be taken to separate recycling or household hazardous waste collection points. Find a recycling location near you to properly dispose of Li-ion batteries.
4. To prevent fires, place each battery or device containing a battery in a separate plastic bag. Place non-conductive tape (e.g., electrical tape) over the battery's terminals.
5. Check if your local community has a battery recycling program. Many cities and towns offer free battery recycling services at designated drop-off locations. This is often the most environmentally-friendly option for disposing of batteries.
6. Take the battery to a designated drop-off location for proper disposal. Check with your local waste management agency to find out where to dispose of household lithium-ion batteries.
7. Avoid disposing of batteries in public places. Throwing batteries in public places can be dangerous, as children or animals can accidentally ingest them. In some areas, it is illegal to dispose of batteries this way.
8. Wash your hands after handling the battery. If your skin comes into contact with a battery leak, wash immediately with warm soapy water and contact your local hospital or clinic for medical advice.



# Trouble-shooting

---

Poor suction	<ol style="list-style-type: none"><li>1.Clean up the dust cup, filters, and brush-roll.</li><li>2.Check if the suction port of the dust cup or the wand is blocked.</li><li>3.Change the HEPA filter or the cotton filter.</li></ol>
Stop working	<ol style="list-style-type: none"><li>1.Charge the battery.</li><li>2.Clean up the dust cup, filters, and brush-roll. Make sure there is not tangle or blockage.</li></ol>
Non-chargeable	<ol style="list-style-type: none"><li>1.Make sure the charger is connected.</li><li>2.Check if the power socket is working.</li><li>3.Check if the charger is broken.</li></ol>
Brush-roll not working	Clean up the brush-roll. Remove the tanglement.

## Note:

Please contact DIBEA customer service when all the check-ups and clean-ups are finished and the problem still exists.

Customer service: [us-support@dibea.com](mailto:us-support@dibea.com)

# Specifications

---

Rated voltage	25.9 V
Rated power	500 W
Battery capacity	2500 mAh
Charging time	3-4 h
Input voltage	100-240 V
Output voltage	30 V
Dust cup capacity	680 ml

## 1-Year Limited Warranty

---

# 1-Year Limited Warranty

If a claim is received within one year of receipt and the product is found to have failed under the warranty we shall, at our option:

- repair the product,
- exchange the product with a product that is new or which has been manufactured from new or serviceable used parts and is at least functionally equivalent to the original product.

Please note: Easily damaged accessories including filters, brush heads, non-slip strips, etc. are not covered by our warranty, but if the product accessories are damaged within one year, you can contact us via amazon message for related accessories, we will offer you with discounts .

The warranty gives you specific rights and you may also have other rights, which vary in different states and countries. Our company warrants to the original consumer purchaser that this product is free of defects in materials and workmanship for 1 year from the purchase date. This warranty does not cover (a) normal wear and tear (including, without limitation, wear and tear of batteries, if applicable), (b) defects caused by rough or inappropriate handling or use or damage caused by accident, misuse, neglect, fire, water, lightning or other acts of nature, (c) if the product contains a battery and the fact that the battery has been short-circuited, if the seals of the battery enclosure or the cells are broken or show evidence of tampering or if the battery has been used in equipment other than those for which it has been specified, (d) non-compliance with the product instructions, (e) willful or deliberate damage, neglect or negligence, (f) use of spare parts, an unauthorized cleaning solution if applicable, or other replacement items (including consumables) which are not provided or recommended by us, (g) any alteration or modification to the product which has been carried out by you or a third party not authorized by us, (h) any failure to adequately package the product for transportation, (i) extreme or external causes beyond our reasonable control including, but not limited to, breakdowns, fluctuations, or interruptions in electric power, ISP (internet service provider) service, or wireless networks, (j) weak and/or inconsistent wireless signal strength in your home, (k) any product(s) purchased from unauthorized sellers/dealers/resellers. Some jurisdictions may not allow limitations on how long an implied warranty lasts or the exclusion or limitation of incidental or consequential damages, so the above exclusions or limitations may not apply to you.

**After-Sale Service: [us-support@dibea.com](mailto:us-support@dibea.com)**

# Dibea

**Suzhou Dibea Electrical Technology Co., Ltd.**

Address: No.19 Fuli Road, Wuzhong District, Suzhou, Jiangsu, China