

# Stopping Plug Polyamide. Type: CPM



## Other Certificates



## Applications

The CPM stopping plug is designed to seal unused entries on electrical equipment in hazardous areas, maintaining Ex eb, Ex tb equipment protection types.

When installed the CPM stopping plug protects against moisture, dusts and other contaminants entering electrical apparatus, permitting the safe introduction of future wiring.

CPM stopping plug offers three installation solutions from the outside: Allen key, flat head screwdriver or a spanner/wrench.

The design provides protection against excessive tightening during assembly and a collar that prevents tools from marking the face of the mating surface during installation.

Made of black polyamide, the CPM stopping plug incorporates a sealing lip which maintains IP66 without the need for an additional seal.

Alternatively, a version with a EPDM O-ring can achieve IP68 (40 m for 30 min).

## Features

- Certified ATEX, IECEX, NEC & CEC
- High level of ingress protection to IP66, IP67 & IP68
- Wide variety of ISO and PG threads

## Technical characteristics

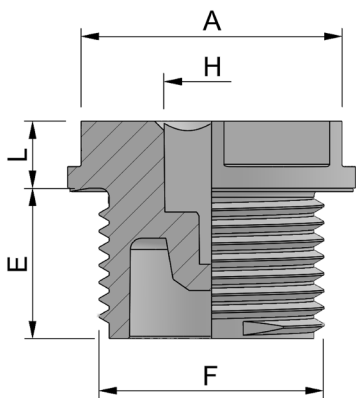
### Stopping plug polyamide type CPM

Approvals	
Applications	Safe to use in zones 1, 2, 21 and 22
Protection Class	Ex II 2G - Ex eb IIC Gb Ex II 2D - Ex tb IIIC Db IP66
ATEX Certificate	INERIS 22 ATEX 0006X
IECEX Certificate	IECEX INE22.0008X
UKCA Certificate	UKCA CML 23 UKEX 3087X
NEC / CEC	
NEC Application & Protection Class	Class 1 Zone 1 AEx eb IIC Gb, Class 2 Zone 21 AEx tb IIIC Db
NEC Application & Protection Class	Zone 1, Ex eb IIC Gb X, Zone 21, Ex tb IIIC Db X
NEC / CEC Certificate	UL E534172 (M20 to M63 only)
Operating temperature	-30°C to +90°C -30°C to +80°C with EPDM o-ring
IP Rating	IP66 without O-Ring fitted to flat surface (Ra max = 1,6 µm) <b>Standard Option</b> IP67 / IP68 with EPDM O-ring or rough surface (Ra max = 6,3 µm)
Materials	Stopping Plug: Polyamide UL94 HB O-Ring: EPDM

# Stopping Plug Polyamide. Type: CPM



## Dimensions



THREAD (F)	HEX ALLEN KEY (H)	FLAT KEY (A)	LENGTH OF THREAD (E)	HEIGHT OF HEAD (L)
M16	6	19.0	13.2	5.9
M20	8	23.0	13.2	5.9
M25	10	28.0	13.2	6.9
M32	12	36.0	13.1	7.4
M40	12	44.0	13.1	7.4
M50	12	54.0	13.3	7.9
M63	14	67.0	15.0	8.4

THREAD (F)	HEX ALLEN KEY (H)	FLAT KEY (A)	LENGTH OF THREAD (E)	HEIGHT OF HEAD (L)
PG9	5	19.0	10.0	5.9
PG11	5	22.0	10.5	5.9
PG13.5	8	24.0	9.2	5.9
PG16	10	27.0	10.2	6.9
PG21	12	32.0	10.7	7.4
PG29	12	40.0	13.1	7.4
PG36	12	52.0	13.2	7.9
PG42	12	59.0	15.0	7.9

## Standard order codes

### ISO Metric

PLUG ONLY IP66 - FLAT SURFACE		PLUG + O RING IP 67 / 68 OR ROUGH SURFACE	
SIZE	REFERENCE		REFERENCE
M16	CPM1100E		CPM1100EU
M20	CPM1200E		CPM1200EU
M25	CPM1300E		CPM1300EU
M32	CPM1400E		CPM1400EU
M40	CPM1500E		CPM1500EU
M50	CPM1600E		CPM1600EU
M63	CPM1700E		CPM1700EU

### PG

PLUG ONLY IP66 - FLAT SURFACE		PLUG + O RING IP68 OR ROUGH SURFACE	
SIZE	REFERENCE		REFERENCE
PG9	CPM2100E		CPM2100EU
PG11	CPM2200E		CPM2200EU
PG13,5	CPM2300E		CPM2300EU
PG16	CPM2400E		CPM2400EU
PG21	CPM2500E		CPM2500EU
PG29	CPM2600E		CPM2600EU
PG36	CPM2700E		CPM2700EU
PG42	CPM2800E		CPM2800EU

All dimensions in mm.