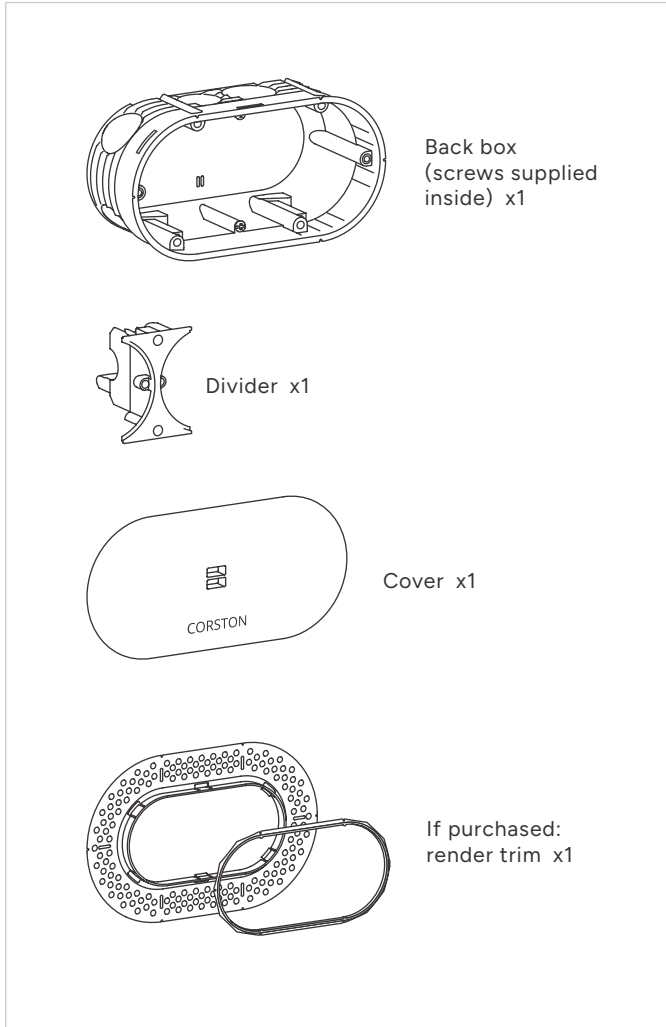


European back box & render trim

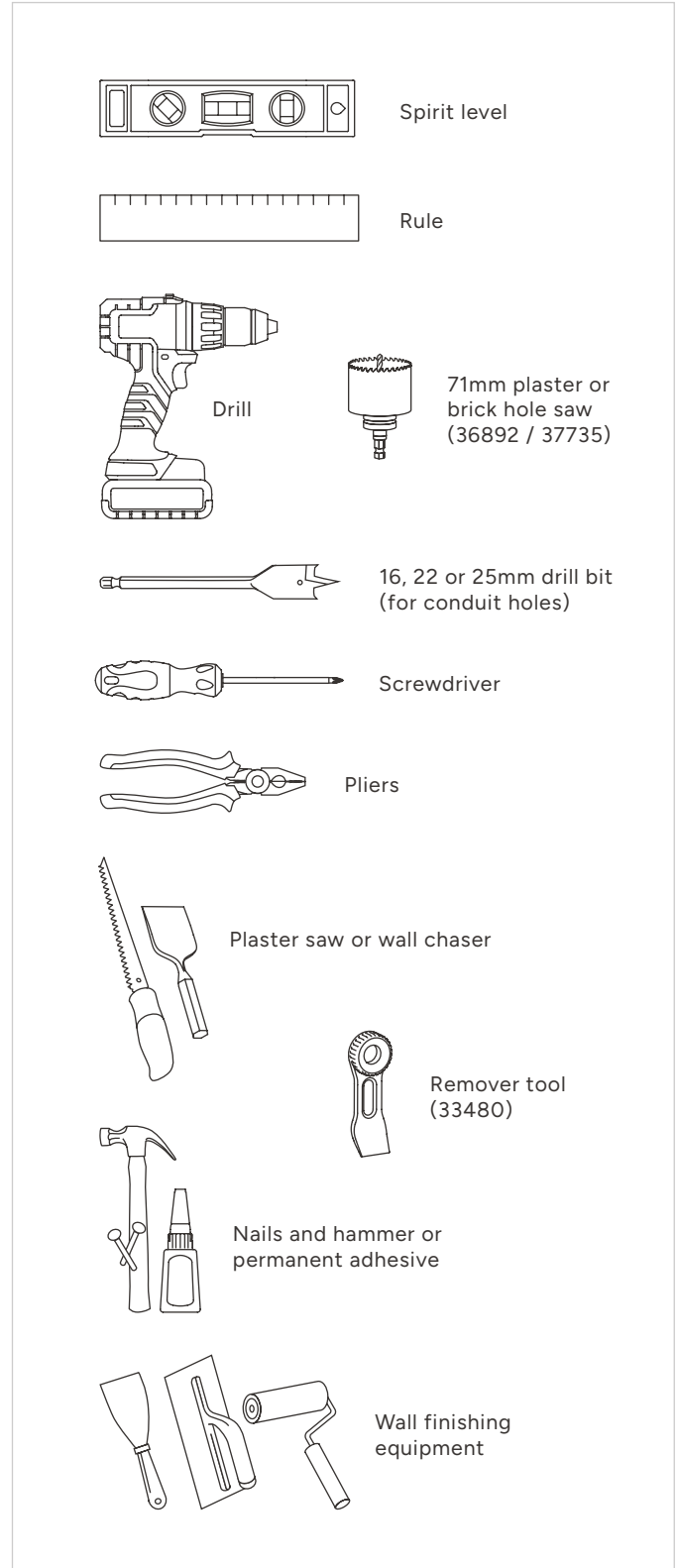
INSTRUCTIONS

INCLUDED

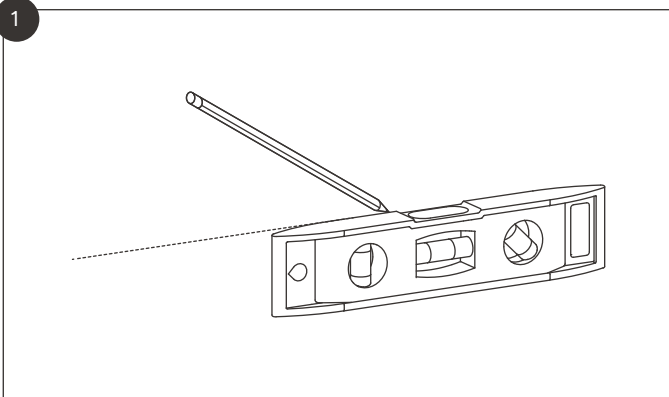


These back boxes are specially designed by us to go with our Kew range of flush plates, meaning they have a unique installation process. This guide is therefore not suitable for use with standard European back boxes.

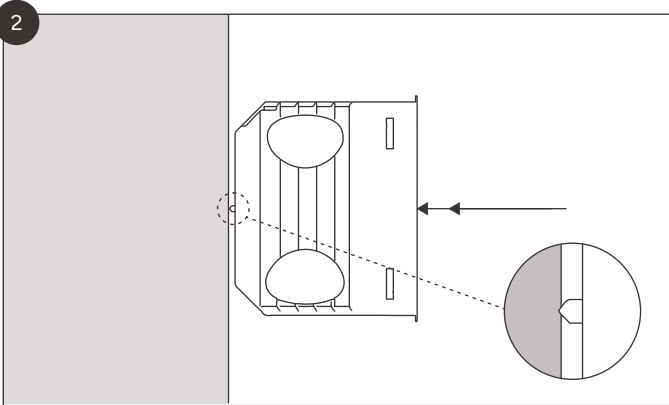
TOOLS YOU'LL NEED



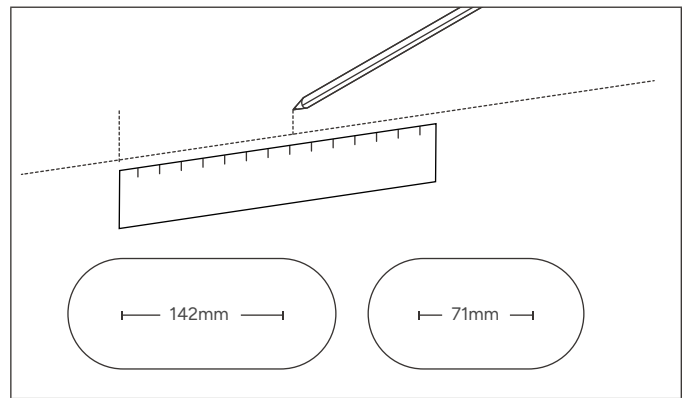
European back box & render trim instructions



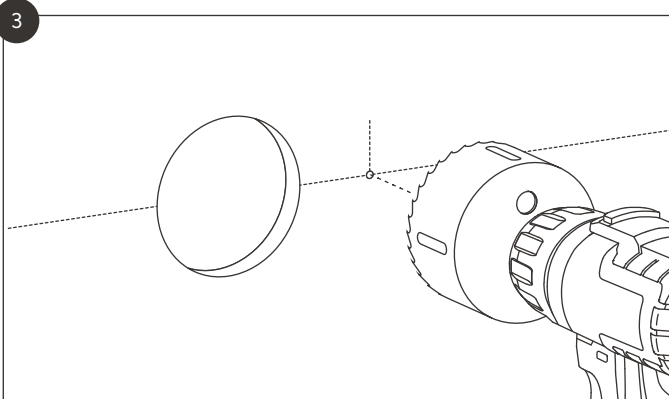
Draw a horizontal line on the wall.



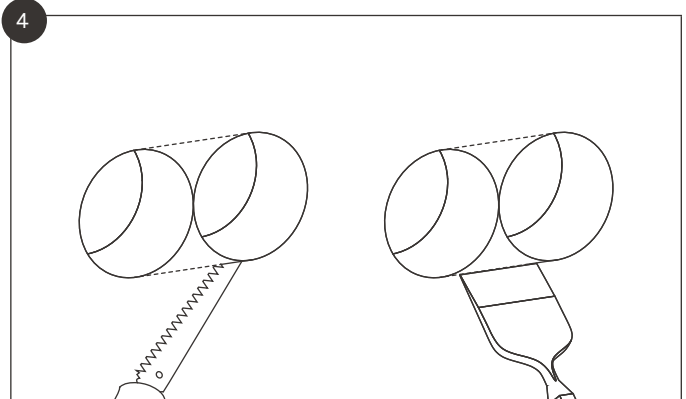
Plasterboard: line the box up with the line and push against it, allowing the spikes to impress on the wall.



Brick wall: measure and mark the distance specified.

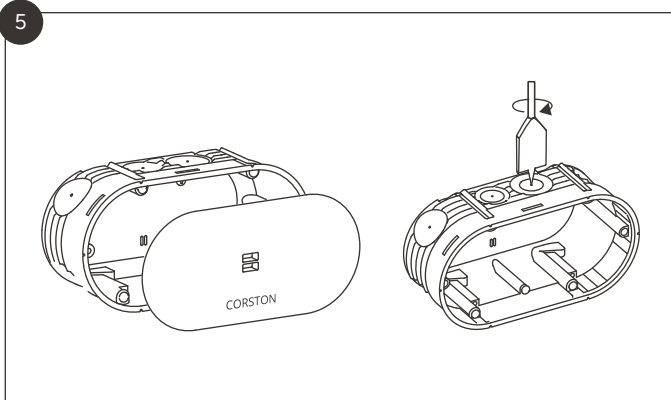


Using the markings as centrepieces, drill 71mm holes in the wall.

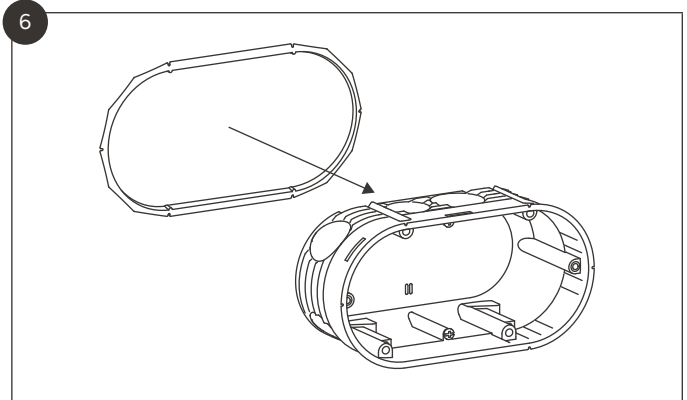


Remove excess wall between the holes.

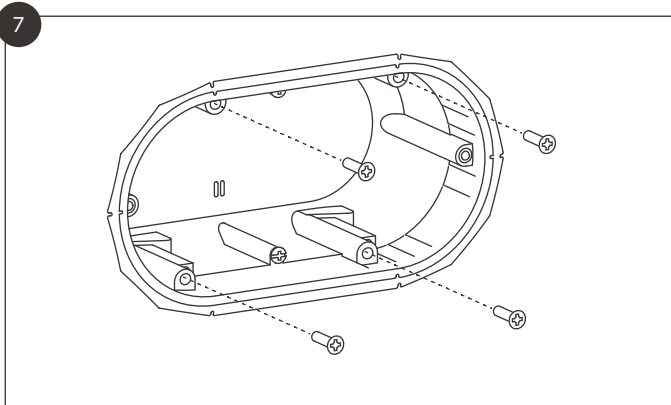
European back box & render trim instructions



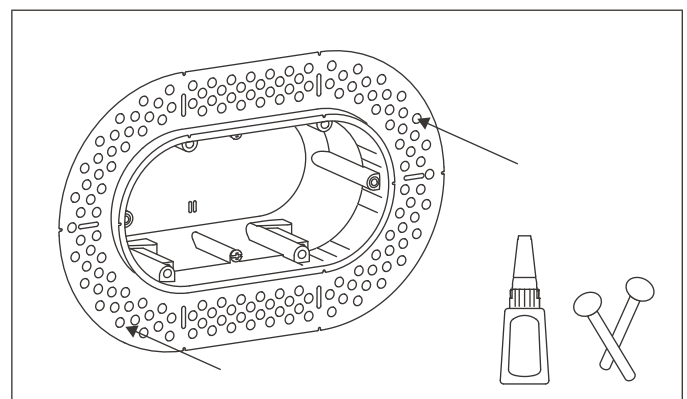
Remove the back box cover and drill out the conduit holes.



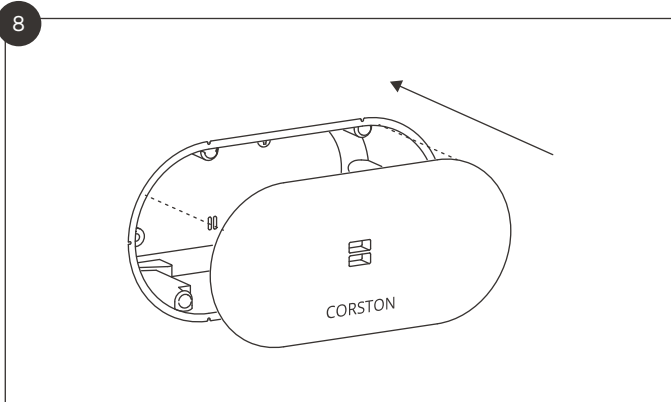
If using a trim, fit the trim onto the box.



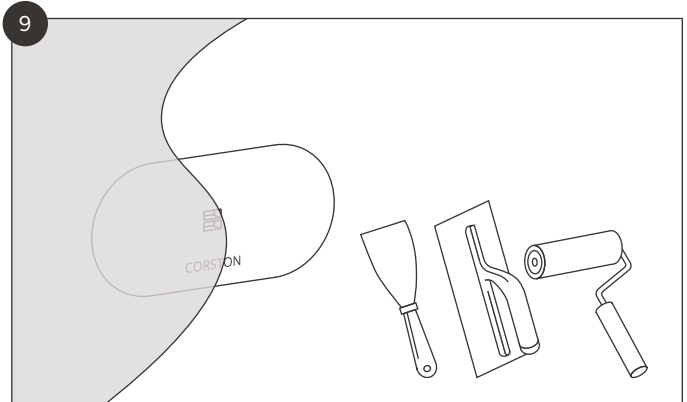
Plasterboard: push the box into the hole and screw in.



Brick wall: secure the box into the hole, for example with adhesive, or by nailing the trim down.



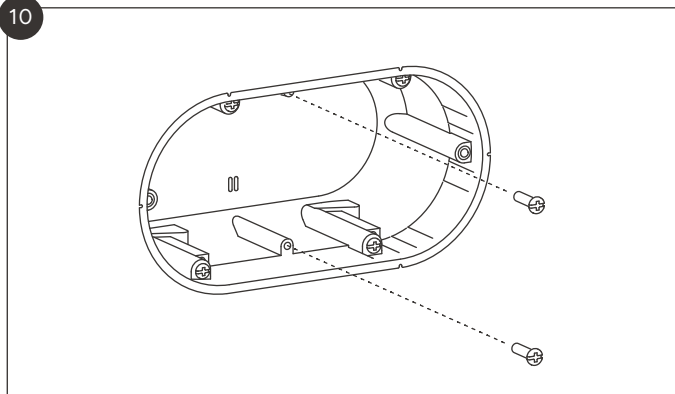
Put the back box cover back on.



Finish the wall as required.

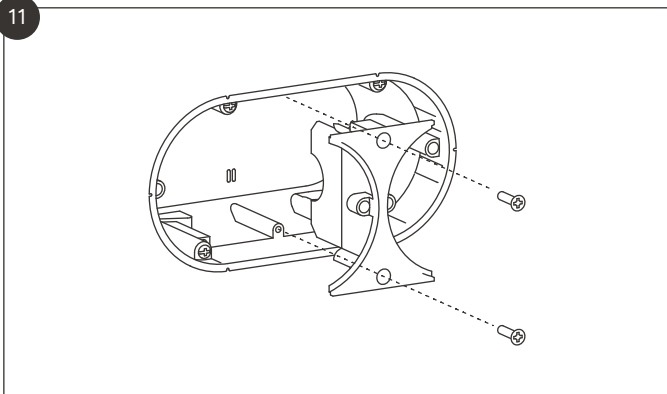
European back box & render trim instructions

10



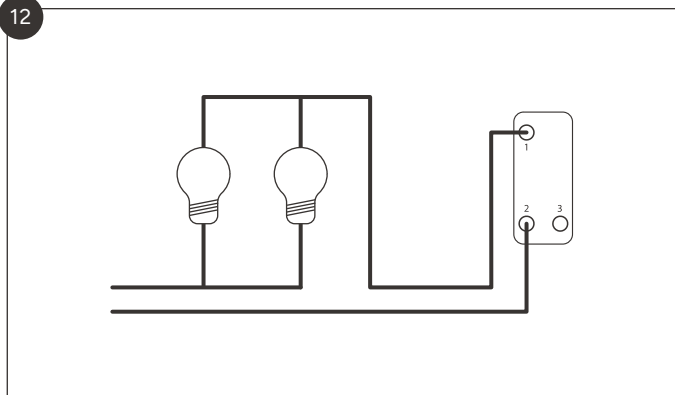
Remove the cover and the central screws.

11



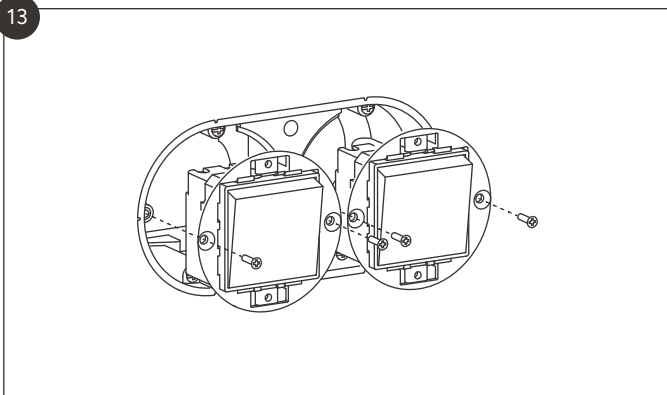
Install the divider.

12



Make electrical connections to wire in the modules.

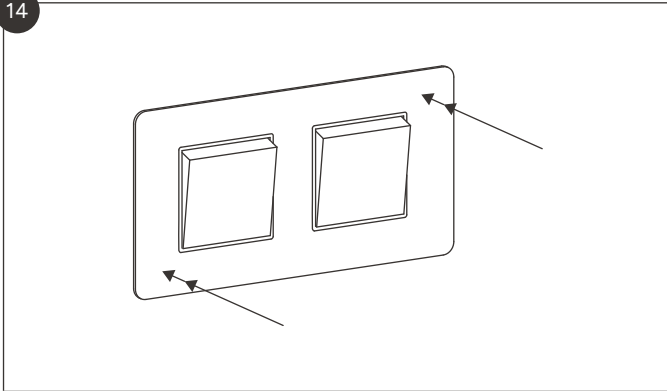
13



Screw in the modules.

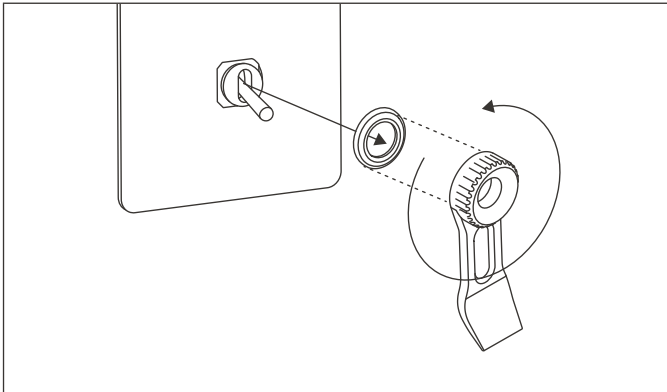
European back box & render trim instructions

14

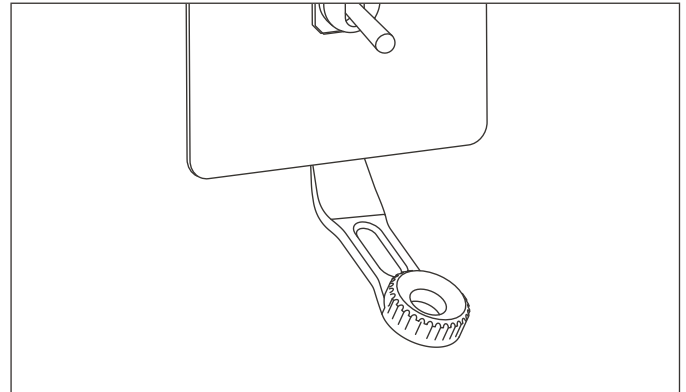


Clip on the front plate.

REMOVAL



Toggle switches: use the remover tool to unscrew the toggle ring.



Slide the lip of the remover tool under the edge of the front plate and lever until it comes off.