



Manual for ePaper Driver Board & USB Image Upload Operations



Dalian Good Display Co., Ltd.

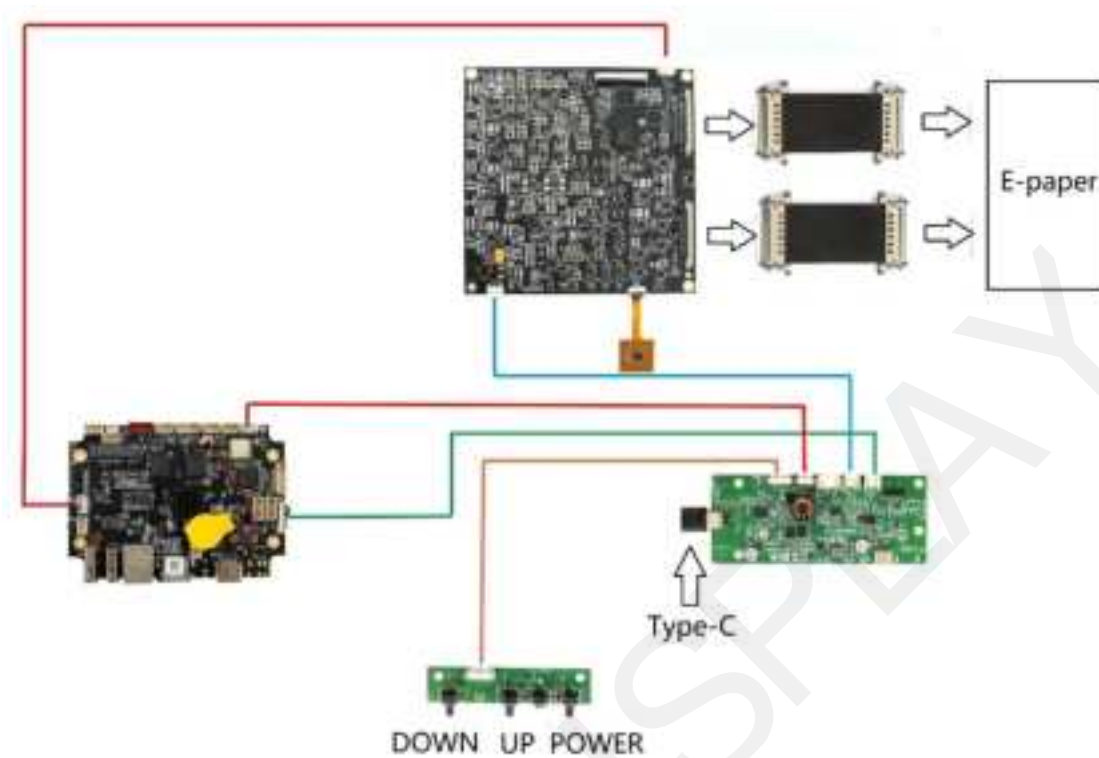
Contents

1. Connection Diagram for Driver Board.....	3
2. Introduction to Image Processing Software	6
3. Creating XT_Resources Image Resource Pack	8
4. USB Image Upload Process	12

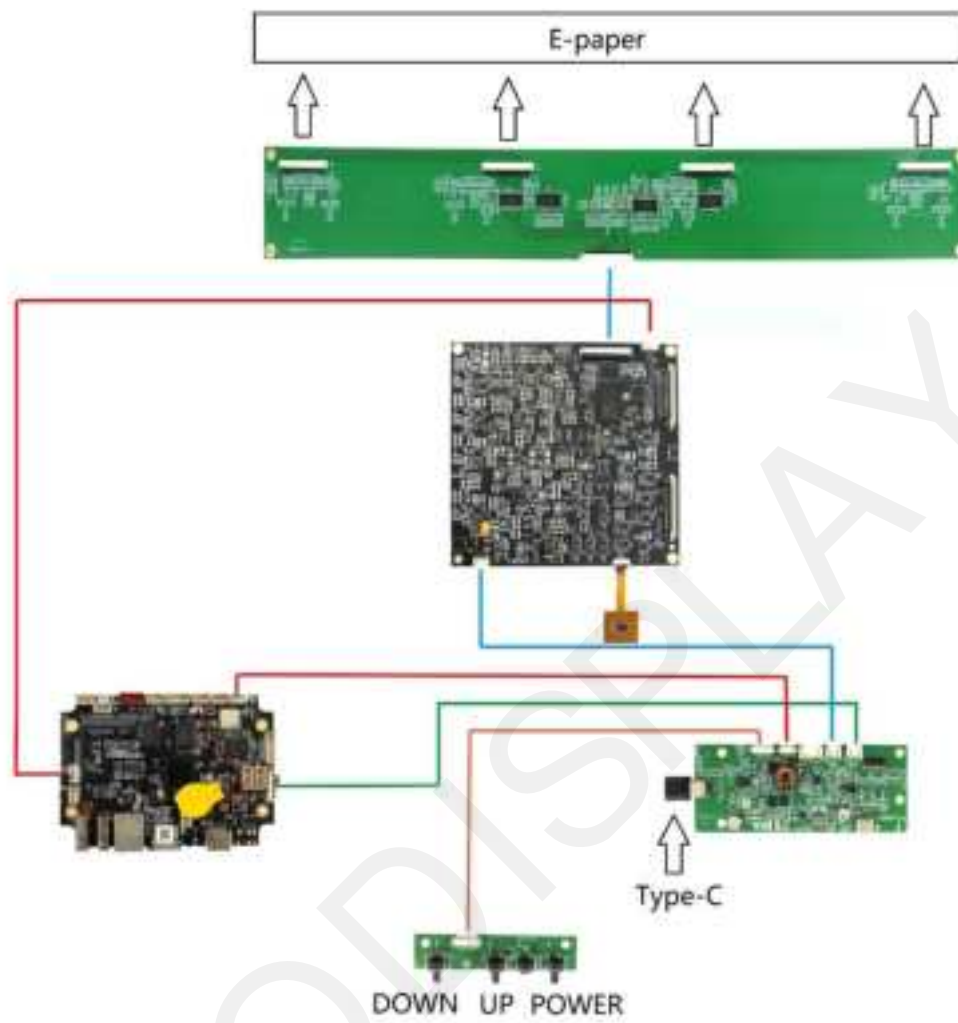
GOODDISPLAY

1. Connection Diagram for Driver Board

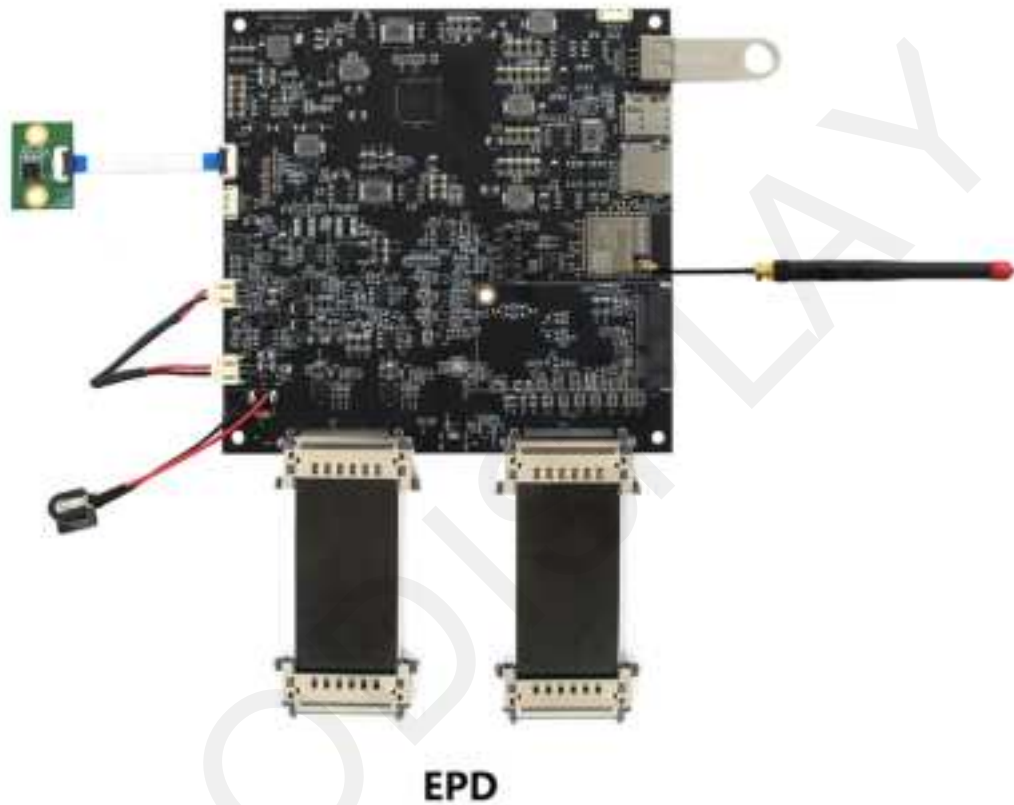
1) 25.3 inch GDEP253C01, GDEP253C02 Color Driver Board



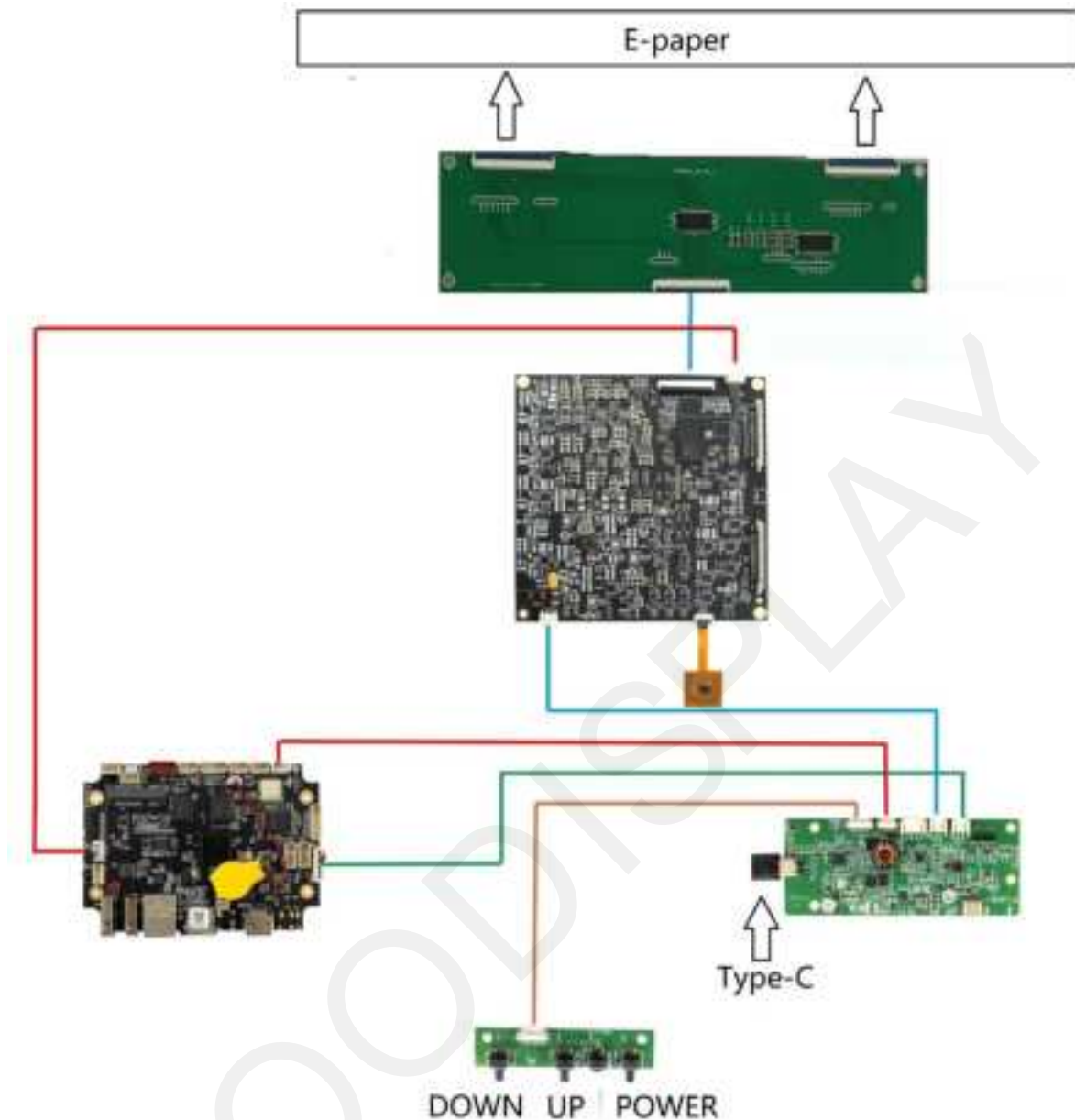
2) 31.2 inch GDEP312TT3 Black and White Driver Board



3) 31.5 inch GDEP315C01 Color Driver Board



4) 42 inch GDEP420T01 Black and White Driver Board



2. Introduction to Image Processing Software







2.1 Software Instructions

This manual mainly provides instructions for using the "xtacep" tool. The full name of the software is xtacepSetup-V2.10.0. Double-click the software to install it directly. It allows for the quick creation of the XT_Resources package for USB image loading, facilitating easy deployment and use by users.

Note: This software must be installed on a drive other than the C drive, and the installation directory should not contain any spaces.

2.2 Software Package Directory

Double-click the xtacep.exe file to open the software:

	ACEP	2023/10/23 11:12	文件夹	
	jre1.8.0_161	2023/10/23 11:12	文件夹	
	Log	2023/10/23 11:12	文件夹	
	unins000.dat	2023/10/23 11:12	DAT 文件	43 KB
	unins000.exe	2023/10/23 11:11	应用程序	3,149 KB
	xtacep.exe	2023/10/7 16:24	应用程序	3,433 KB

2.3 Software Operating Environment

This software can run on Windows 7.0 and above.

2.4 Software Prerequisites

Prepare images that meet the following resolution specifications. Supported formats include bmp, png, jpeg, and jpg.

1. Image Resolution

13.3 inch: 1600x1200

25.3 inch: 3200x1800

28 inch: 3840x1080

31.2 inch: 2560x1440

31.5 inch: 2560x1440

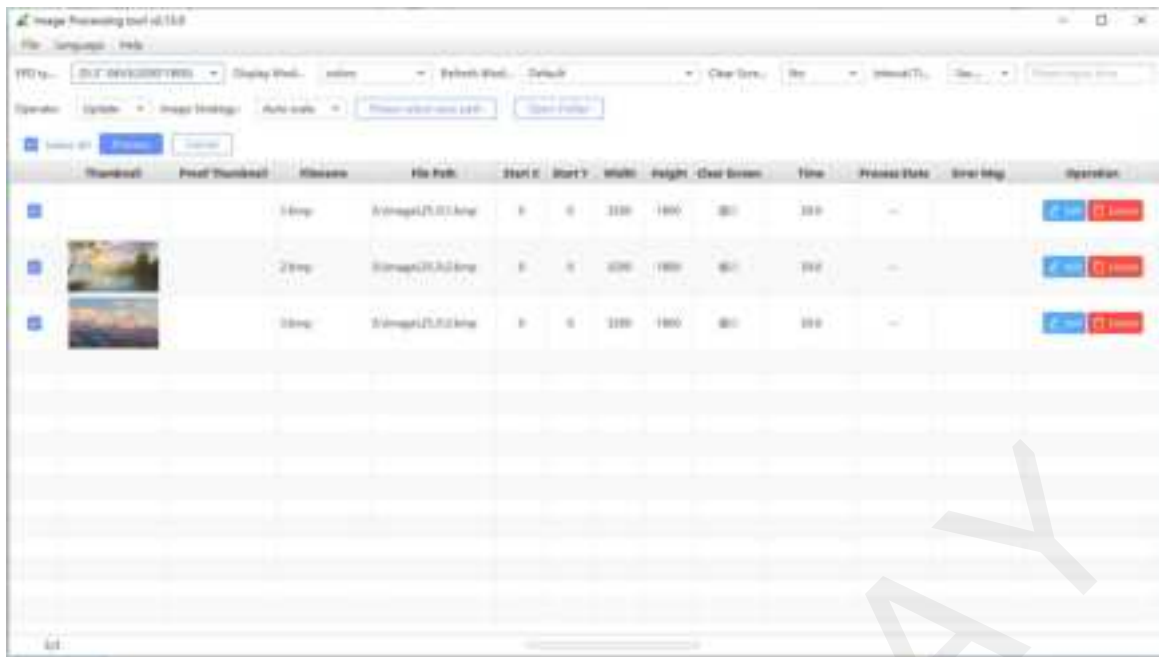
42 inch: 2880x2160

2. Image Storage Location:

The xtacep software will automatically convert and generate an XT_Resources folder, which should be placed in the root directory of the USB drive.

Note: For GDEP133C02 and GDEP315C01, you need to copy all files from the XT_Resources folder to the root directory of the USB drive.

3. Creating XT_Resources Image Resource Package

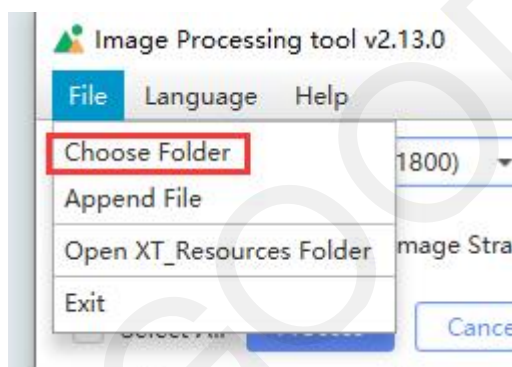


Parameter Settings Interface

3. Creating XT_Resources Image Resource Pack

3.1 Overview of Software Functions

1 "Choose Folder": Select the folder containing the images you want to process. You can choose any image path, but make sure that the path does not contain any spaces.



Note: Images must not contain spaces, or they will not be recognized.

2. Select E-Paper Type ("EPD type"):

- "EC" for Black and White screens
- "EG" for ACEP Color screens
- "E6" for 6-Color screens

3. Select the appropriate option for your e-paper model:

- 13.3 inch GDEP133UT3 Black and White: 13.3" EC(1600*1200) ▼
- 13.3 inch GDEP133C02 Color: 13.3" E6(1200*1600) ▼
- 25.3 inch GDEP253C01 Color: 25.3" EG(3200*1800) ▼

- 25.3 inch GDEP253C02 Color: 25.3" E6V3(3200*1800) ▼
- 28 inch GDEP280T01 Black and White: 28" EC(3840*1080) ▼
- 28 inch GDEP280C01 Color: 28" EG(3840*1080) ▼
- 31.2 inch GDEP312TT3 Black and White: 31.2" EC(1440*2560) ▼
- 31.5 inch GDEP315C01 Color: 31.5" E6(2560*1440) ▼
- 42 inch GDEP420T01 Black and White: 42" EC(2880*2160) ▼

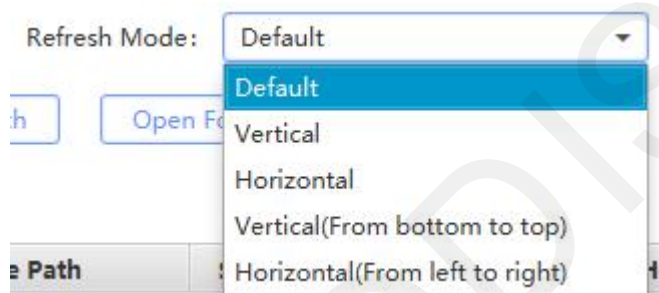
3. Select Color Mode ("Display Mode"):

Generally, the color mode will automatically switch based on the e-paper type you select.

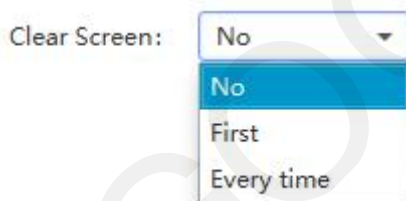
Display Model: colors ▼

- For color e-papers, choose colors.
- For black and white e-papers, choose monochrome.

4. Select Refresh Mode ("Refresh Mode"): By default, images are displayed in a horizontal direction.



5. Select Clear Screen Option ("Clear Screen"): The default setting is "No."



6. Set Screen Refresh Interval ("Interval Time"): The default unit is seconds.

Interval Time: Second ▼

7. Set File Operation Mode ("Operate"): The default setting is "update."



8. Set Image Scaling Strategy ("Image Strategy"): The default is "Auto scale."



9. Set Save Path for Images ("Please select save path"): Set this to the root directory where the images are stored



10. Open Folder ("Open Folder"): This option allows you to locate the processed images.

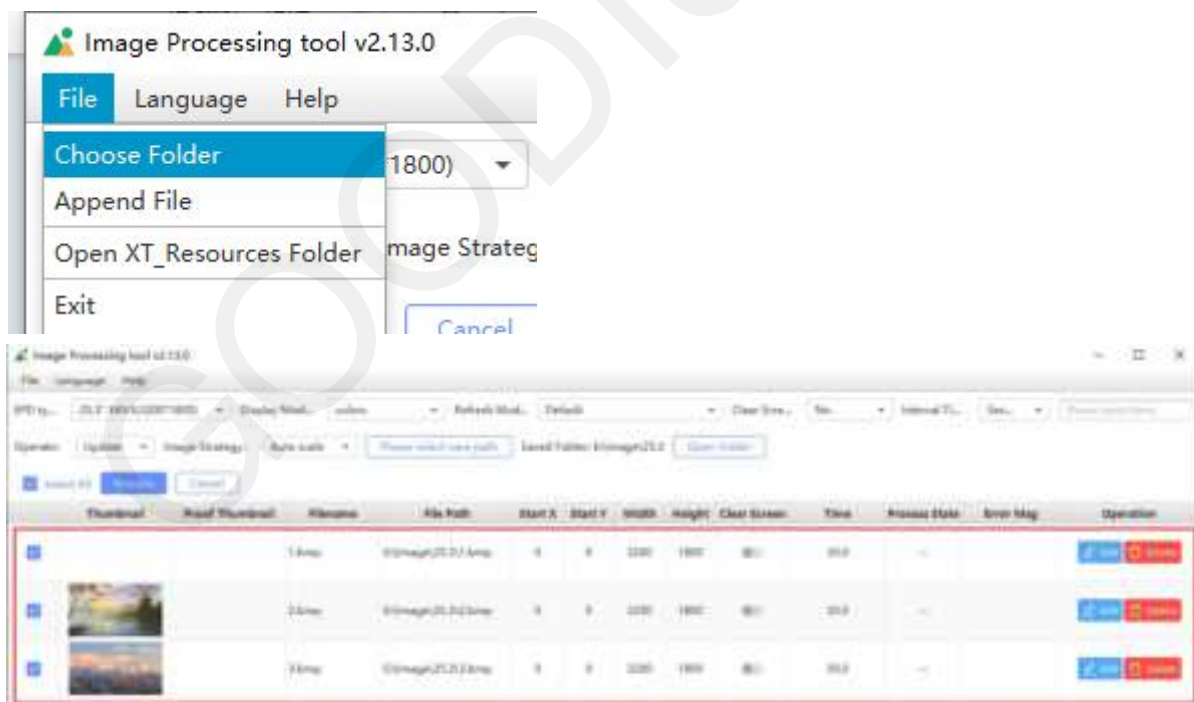


11. Image Processing Button **Process**: This button executes the image processing operation.

3.2 Creating the XT_Resources Package

1. Import Images

Click File→ Select Folder (the folder containing the images to be processed), as shown in the image below:



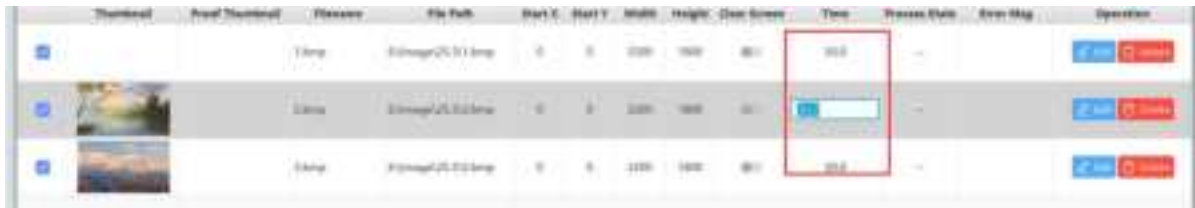
2. Set Screen Parameters

Configure the relevant settings. Note that the save path should not contain any spaces.



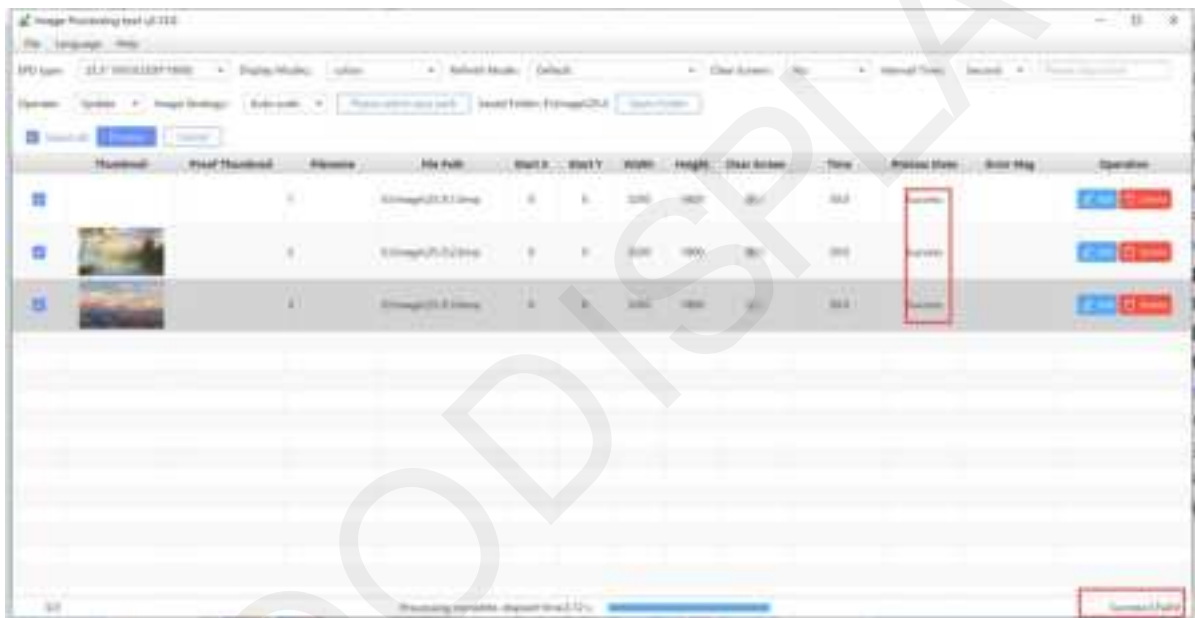
3. Set Image Refresh Interval

The default unit is seconds.



4. Click the Process Button

Wait for the image processing to complete. Once processing is finished, an XT_Resources package will be automatically generated. The status bar will display "Success," indicating that the image conversion is complete. If you see a "Failed" message, check whether the image save path contains any spaces.



5. Click "Open Folder"

This will open the folder containing the newly generated XT_Resources file.

6. Copy XT_Resources to USB Drive

Copy the XT_Resources folder to the root directory of the USB drive (except for GDEP133C02 and GDEP315C01).

Note: For GDEP133C02 and GDEP315C01, you need to copy all files from within the XT_Resources folder directly to the root directory of the USB drive.

4. USB Image Loading Process

Function Description: Once the XT_Resources package is prepared, simply insert the USB drive into the USB port of the demo board.

Process Flow:

1. Prepare the USB Drive

Ensure that the XT_Resources package is correctly placed on the USB drive.

2. Power On the Driver Board

Turn on the driver board (if it has a power board, press the POWER button), then insert the USB drive.

Notes:

1. If the images do not load: Check if the driver board is properly powered on.
2. If images load but display incorrectly: Verify that the parameters in the resource package are correct. If not, recreate the XT_Resources package.
3. If images do not load within 60 seconds after inserting the USB drive: Try turning off and restarting the device.