

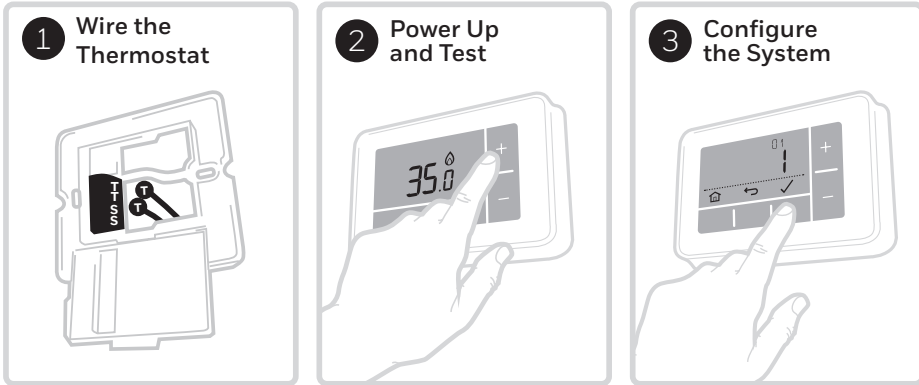
EN

Quick Start Installation Guide

Compatible with OpenTherm appliances only.
Not compatible with 230V boilers, zone valve applications or 230V electric heating.

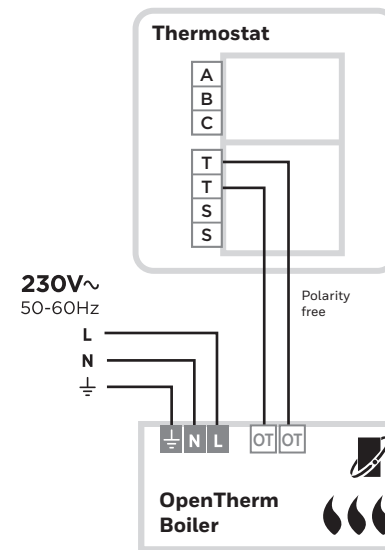


Installation in 3 steps...



Must be installed by a competent person.
To ensure your safety make sure the mains power is switched OFF before accessing wiring.

OpenTherm Boiler



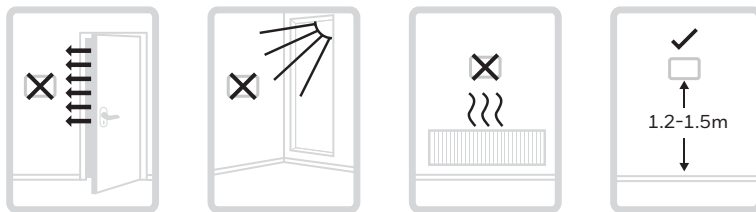
To prevent a short circuit from a loose wire -

- **When using multi-core cables:** Only remove enough outer insulation to allow secure fixing of the cores into the terminal block.
- **When using single core cables:** Secure them together with a cable tie as close as possible to the terminal block.

32318058-001 D

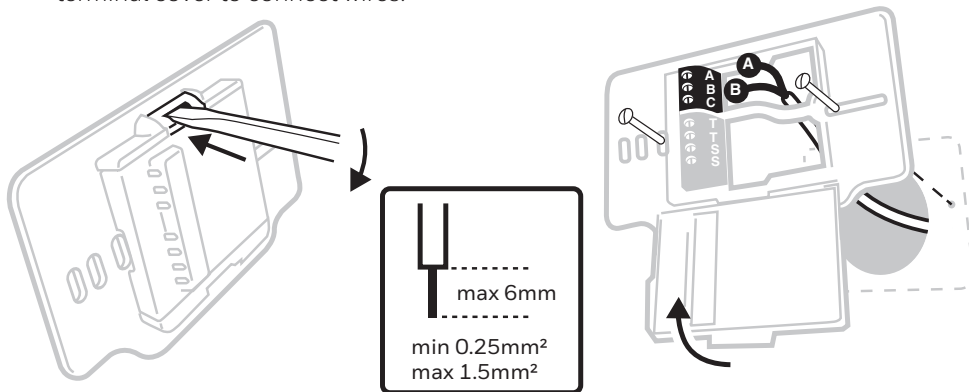
1 Wire the Thermostat

Find a suitable wall location away from draughts, direct sunlight or other heat sources, and where cables can be run from the boiler to the thermostat.



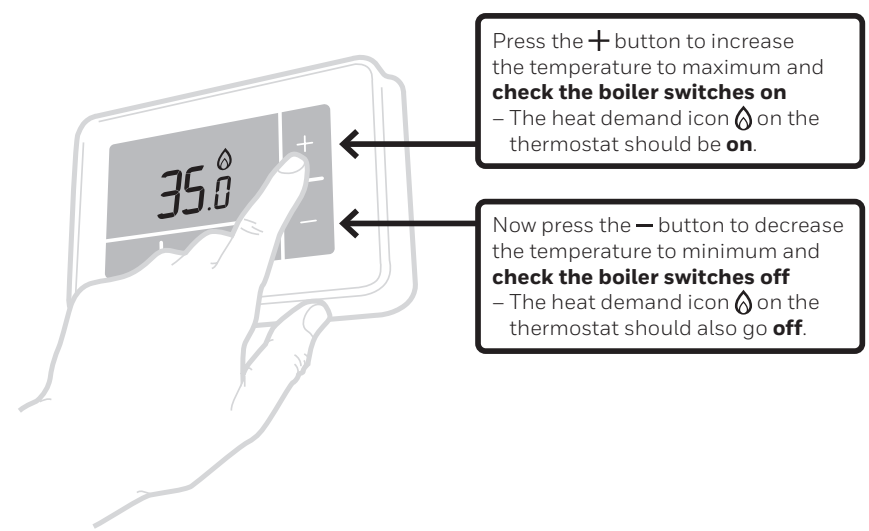
A) Separate the wallplate from the thermostat, and using a screwdriver open the wallplate terminal cover to connect wires.

B) Connect wires according to wiring diagrams and clip the cover closed.



2 Power Up and Test

Power Up the Heating System and do a quick functional test on the thermostat to check that it switches the boiler.



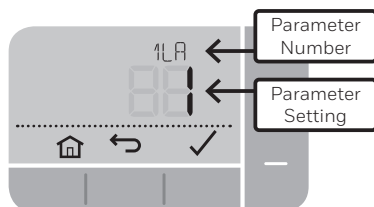
Press the **+** button to increase the temperature to maximum and **check the boiler switches on** - The heat demand icon on the thermostat should be **on**.

Now press the **-** button to decrease the temperature to minimum and **check the boiler switches off** - The heat demand icon on the thermostat should also go **off**.

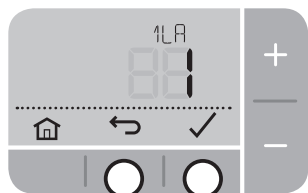
3 Configure the System

Specific settings for the thermostat and heating system can be configured in the advanced menu.

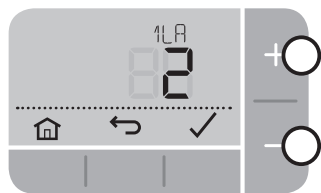
Press and hold and then buttons together until the display changes (approx. **3 seconds**).



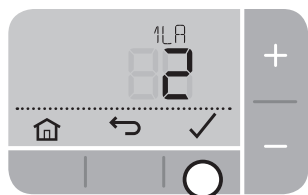
A) Press and buttons to navigate through the parameter list.



B) Press and buttons to change a parameter.



C) Press button to save the change (or press to cancel the change).



D) Press button to exit advanced menu and save any changes.



Parameters

| N° | Description | Settings (default in bold) |
|-------|-----------------------------|---|
| 1 LR | Language | 1 = EN , 2 = NL, 3 = FR |
| 2 CR | Cycle Rate | 6 |
| 4 LL | Lower Temperature Limit | 5 - 21 (°C) |
| 5 UL | Upper Temperature Limit | 21 - 35 (°C) |
| 6 SO | Schedule options | 1 = 7 day (different schedule each day of the week) 2 = 5 + 2 day (weekday + weekend schedule) 3 = 1 day (same schedule every day) |
| 7 NP | Number of periods per day | 4 or 6 |
| 8 SS | Wired Remote Sensor | 0 = No Remote Sensor , 1 = Wired Remote Sensor |
| 9 LC | Fail Safe mode | 0 = Boiler off , 1 = Boiler 20% on / 80% off |
| 10 BL | Backlight | 0 = Off, 1 = On (only on demand) |
| 11 CL | Clock Format | 0 = 24 hr , 1 = AM/PM |
| 12 DS | Daylight Saving time change | 0 = Off, 1 = Auto |
| 13 TO | Temperature Display Offset | +/-1.5°C |
| 15 SD | Restore Schedule Defaults | 0 , 1 = reset |
| 16 FS | Restore Factory Settings | 0 , 1 = reset |
| 17 OP | Optimisation | 0=Disabled , 1=Enabled |

OpenTherm Data ID's

An OpenTherm boiler can report alerts back to the Thermostat. You can view these in the 'OpenTherm® boiler alerts' menu.

The OpenTherm Data ID's appear after the installer parameters (see the table above).

| N° | Description | Settings (default in bold) |
|------|-------------------------------|----------------------------|
| OT1 | Low load control | 0 = Off, 1 = On |
| OT2 | Control setpoint | 5 - 99°C |
| OT3 | Supply water temperature | 5 - 99°C |
| OT4 | Return water temperature | 5 - 99°C |
| OT5 | Max. supply water temperature | 5 - 99°C |
| OT6 | Hot water temperature | 5 - 99°C |
| OT7 | Hot water setpoint | 5 - 99°C |
| OT8 | Actual power | 0 - 99% |
| OT9 | Water pressure | 0.0 - 9.9 |
| OT10 | OTC control | 0 = Off , 1 = On |
| OT11 | OTC curve | 4 - 40 (16) |
| OT12 | Room compensation | 0 = Off , 1 = On |

Conforms to protection requirements of the following directives:

EMC: 2014/30/EU and **LVD: 2014/35/EU**

The full text of the EU declaration of conformity is available at the following internet address: <https://hwlhome.co/DoC>

ErP: Class V (+3%), (EU) 811/2013

WEEE Directive 2012/19/EU - Waste Electrical and Electronic Equipment directive

At the end of the product life dispose of the packaging and product in a corresponding recycling centre. Do not dispose of the unit with the usual domestic refuse. Do not burn the product.



Troubleshooting

| What's happening? | What it could mean... | How to fix it... |
|--|---------------------------------------|---|
| Thermostat display is blank | No power to heating system | Check heating system is powered |
| | Faulty wiring connection | Check wiring at thermostat and boiler terminals |
| Display = -- | Faulty temperature sensor | Replace thermostat or check wiring to remote temperature sensor if fitted |
| Thermostat shows heat demand but boiler doesn't respond | Boiler (water) already at temperature | Normal behaviour - wait for water temperature to drop |
| | Faulty wiring connection | Check wiring at thermostat and boiler terminals |

resideo

Pittway Sarl, Z.A. La Pièce 4,
1180 Rolle, Switzerland

www.resideo.com Country of origin : UK

© 2020 Resideo Technologies, Inc. All rights reserved.
The Honeywell Home trademark is used under license from Honeywell International Inc.
This product is manufactured by Resideo Technologies, Inc. and its affiliates.