

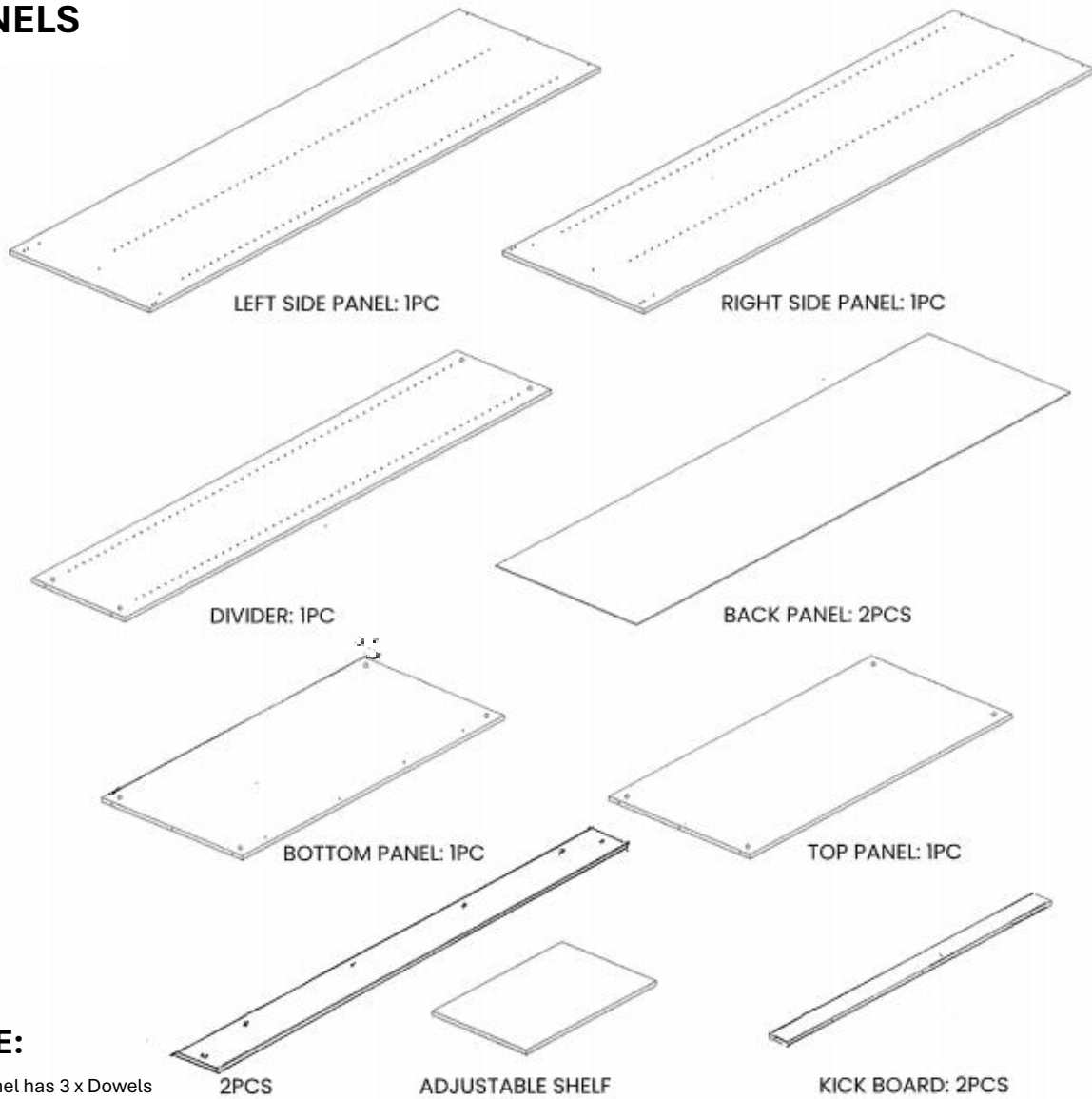


# **Free Standing Wardrobe**

## **Installation Instructions**

[www.simplywardrobes.co.nz](http://www.simplywardrobes.co.nz)

## PANELS



### \* NOTE:

Bottom Panel has 3 x Dowels  
Top Panel Has 2 x Dowels

## PARTS



CAMLOCK AND PIN



32mm SCREW



RAIL HOLDER



SHELF CAM AND PIN  
(x4 PER SHELF)

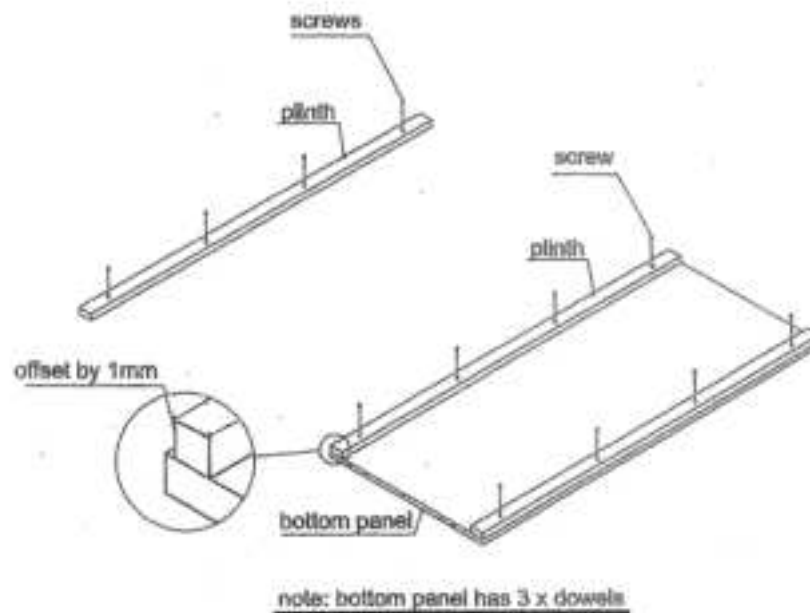


SCREW  
(FOR RAIL HOLDER / L BRACKET / TOP TRACK)

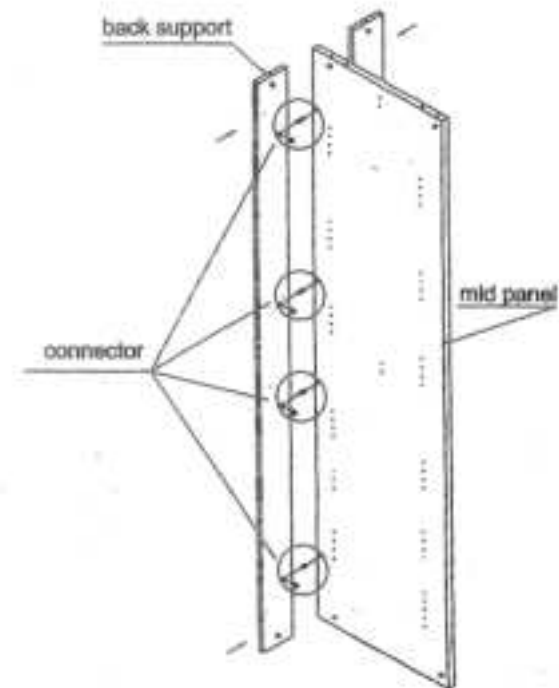


HANGING RAIL

# Free Standing Wardrobe Installation Instructions

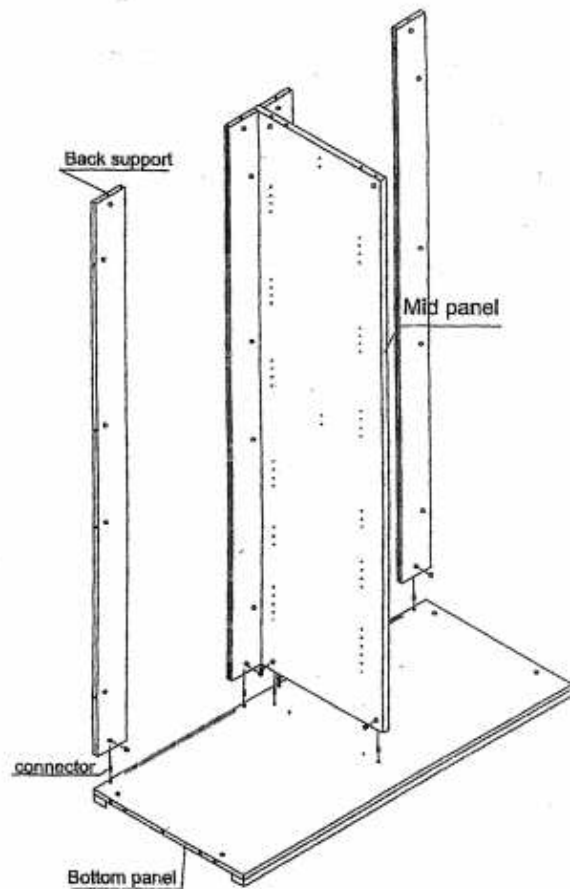


Step 1 - Fit plinths to bottom panel offset by 1mm from edge

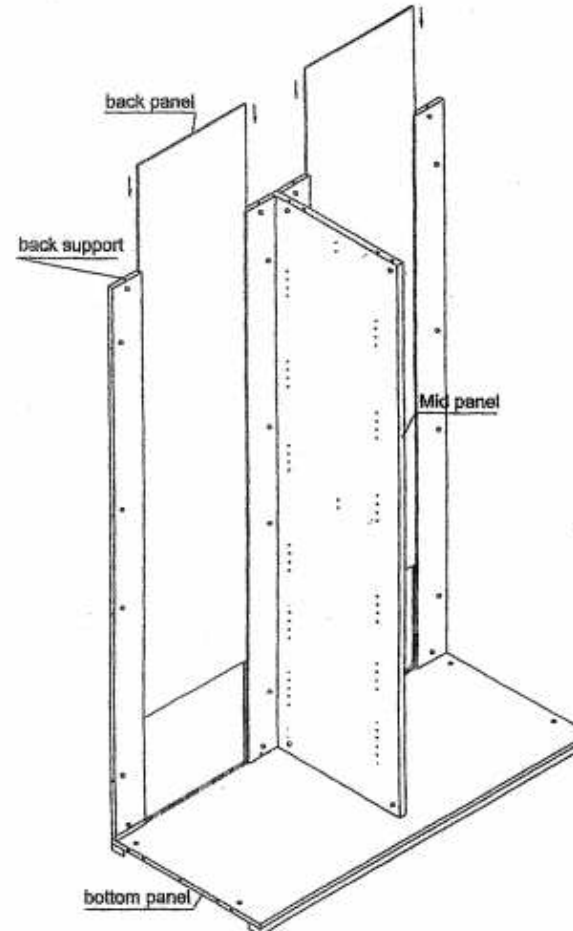


Step 2-Fit back support x 2 to mid panel

# Free Standing Wardrobe Installation Instructions

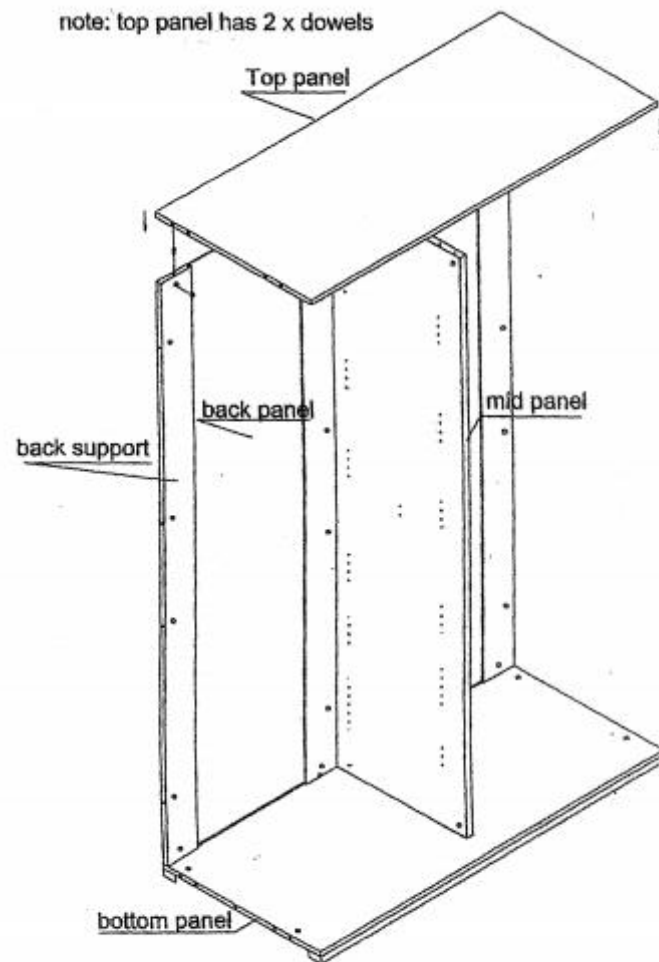


Step 3- Fit mid panel with back supports attached to bottom panel

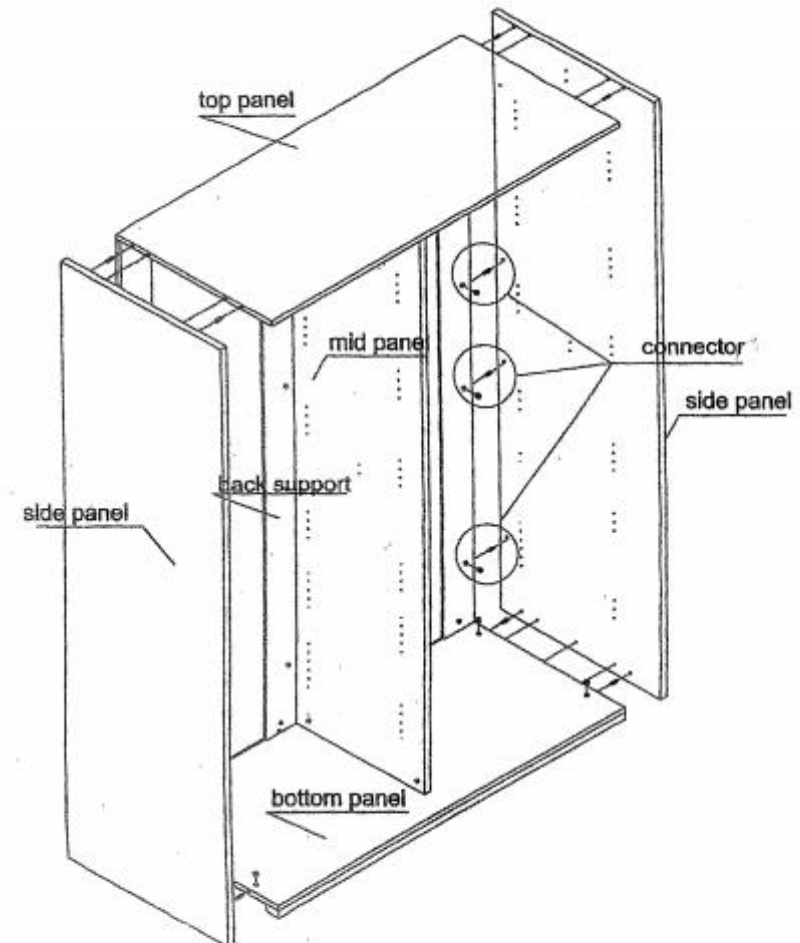


Step 4-Fit back panels and back support to base

# Free Standing Wardrobe Installation Instructions

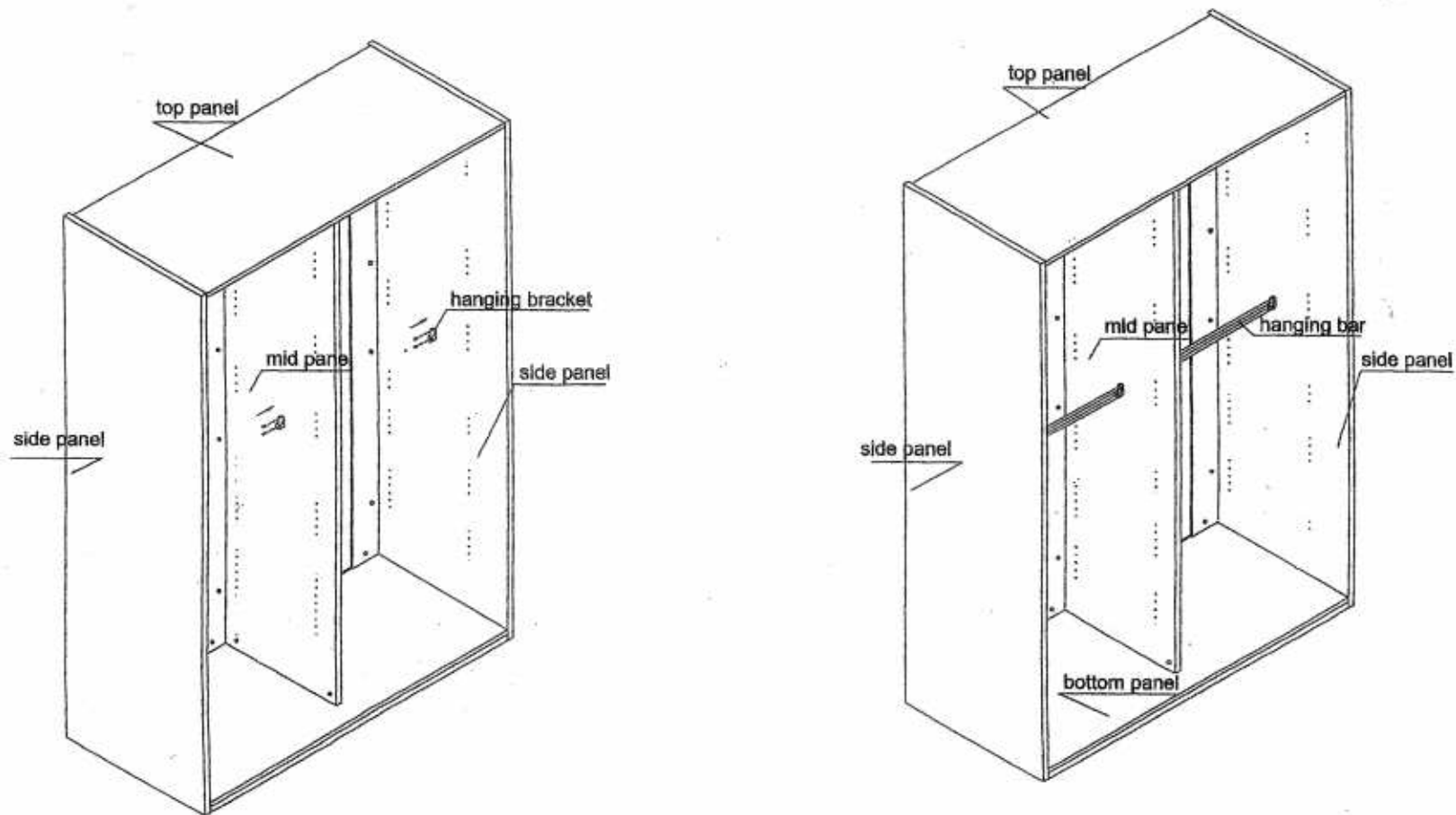


Step 5- Fit top panel



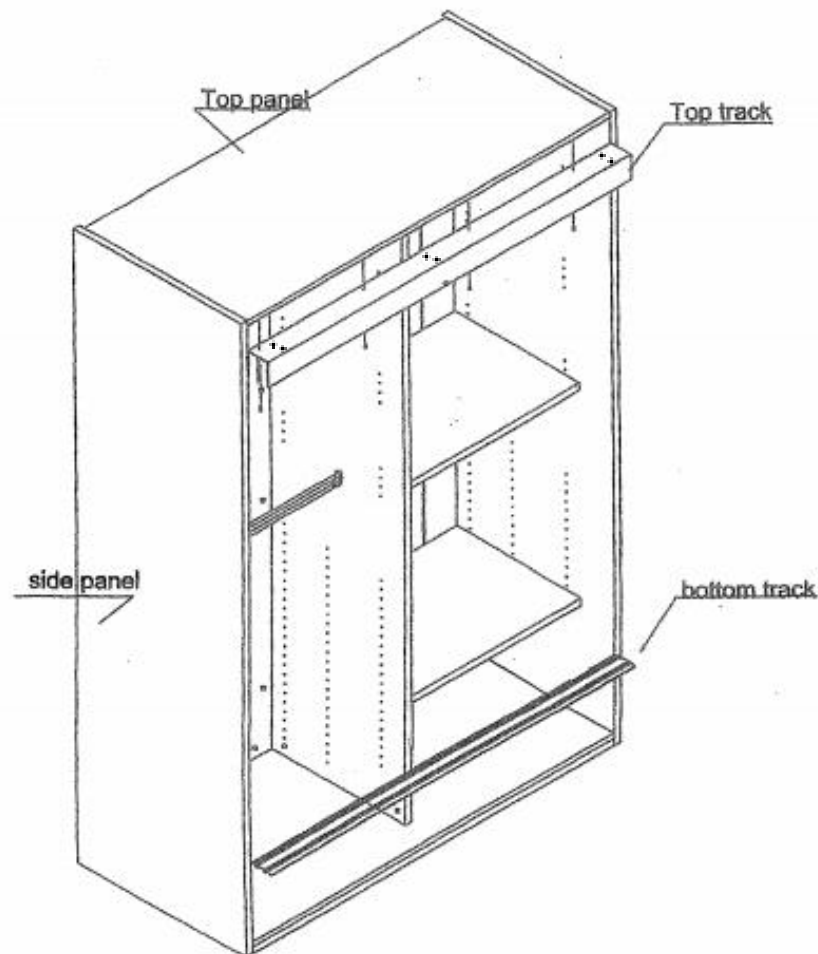
Step 6- Fit side panel L and side panel R

# Free Standing Wardrobe Installation Instructions



Fit hanging bar

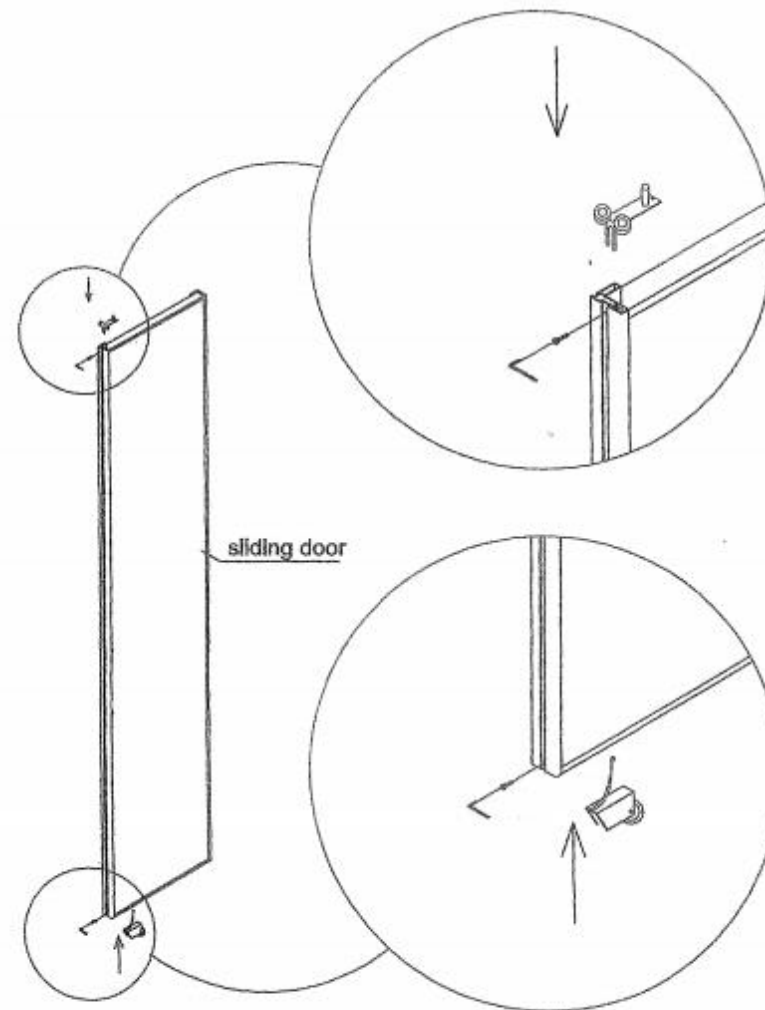
# Free Standing Wardrobe Installation Instructions



Fit top track flush with front edge of top panel with screws provided

Fit bottom track back 5mm from front edge with tape provided

# Free Standing Wardrobe Installation Instructions



Fit sliding doors and adjust bottom wheels with allen key



# Free Standing Wardrobe Installation Instructions

