



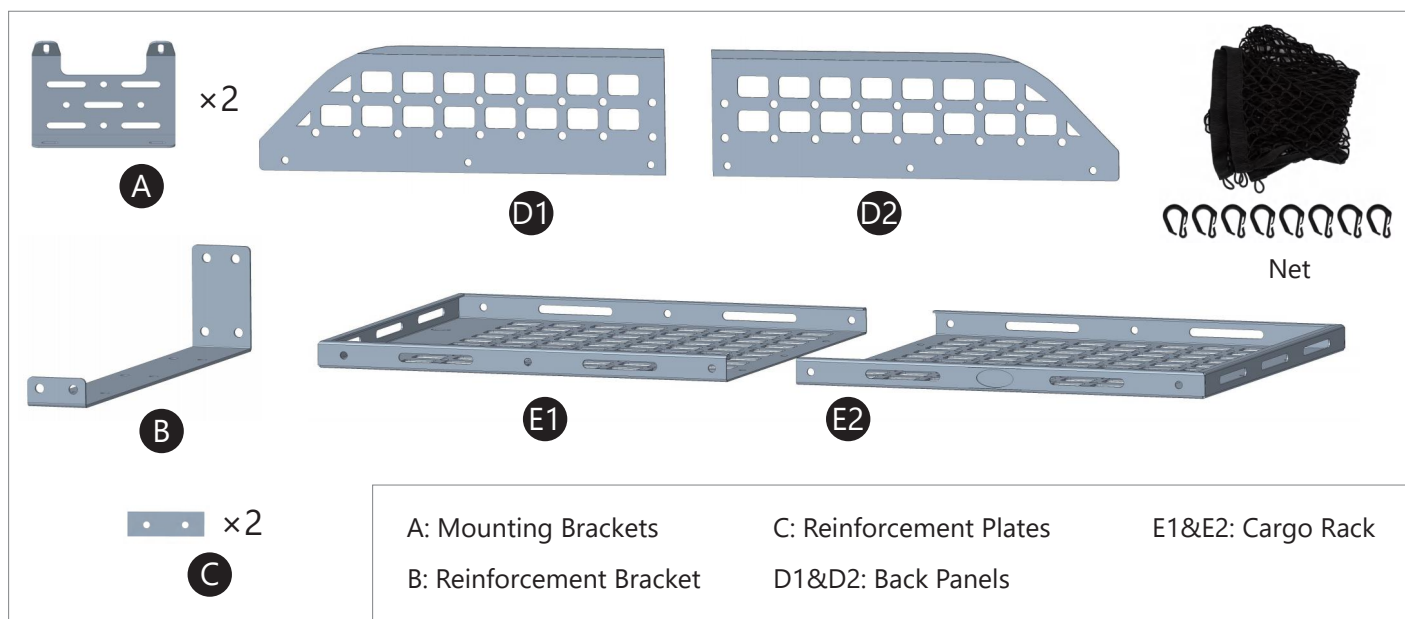
# MAKE A DIFFERENCE

## Inter Cargo Rack

**BXG.4600-S**  
(INSTALLATION INSTRUCTION)

**ATTENTION** • Please verify all parts are present and read instructions carefully before starting installation.  
Please feel free to contact your distributor if you have any kind of question about your purchase.

### 1 CONTENTS



Qty	Part Name	Size(mm)	Picture	Qty	Part Name	Size(mm)	Picture
2	Button Bolt	M8×25		4	Split Lock Washer	D6	
12	Button Bolt	M8×20		20	Flat Washer	M8×16	
6	Button Bolt	M8×16		4	Flat Washer	M6×16	
4	Button Bolt	M6×25		20	Flange Lock Nut	M8	
14	Split Lock Washer	D8					

### 2 TOOLS REQUIRED

◆ Drive Socket Ratchet Wrench

◆ 4mm, 5mm Hex Bit Socket

◆ 13mm Wrench

To view online instruction, please scan the QR code.



## 3 INSTALLATION INSTRUCTION:

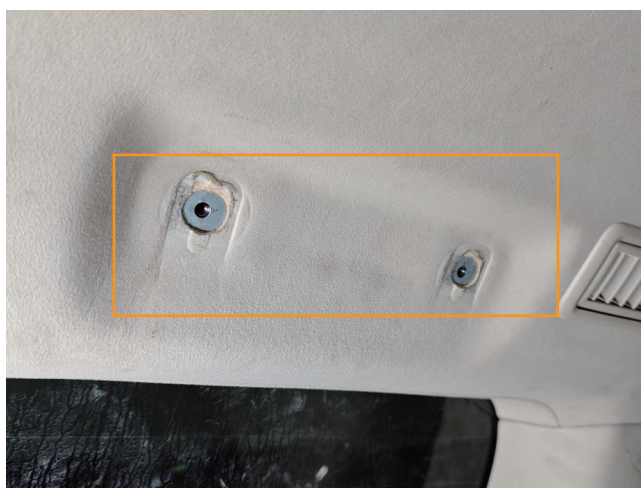
### Step 1

Place the vehicle in park, empty the rear row and prepare to install the cargo rack.



### Step 2

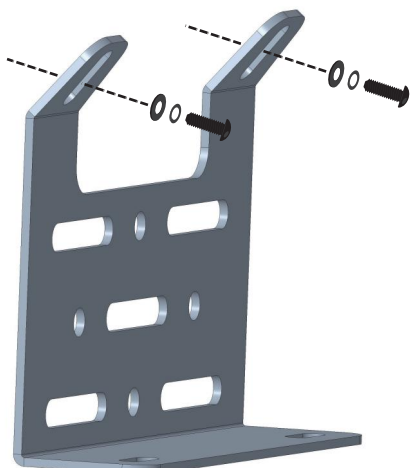
Remove the handle and the plastic panel. Find the factory installation holes. Repeat this step on the other side of the vehicle.



### Step 3

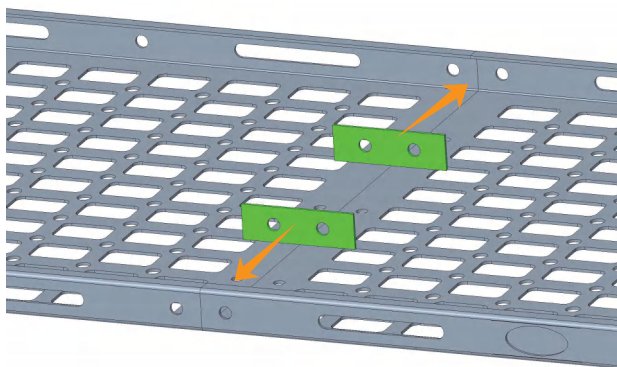
Secure the mounting bracket to the vehicle. **Do not fully tighten to allow adjustability.** Repeat this step on the other side of the vehicle.

- (4) M6×25 Button Bolt
- (4) D6 Split Lock Washer
- (4) M6×16 Flat Washer

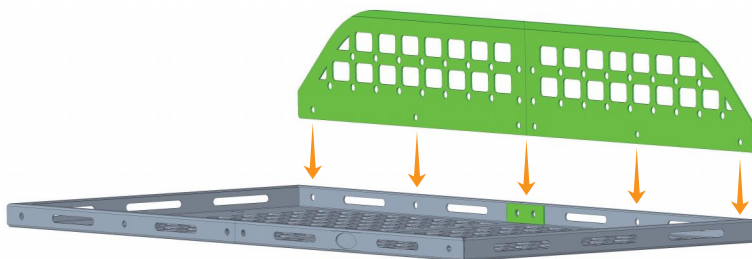


Assemble the cargo rack (E1&E2) and panel (D1&D2) and tighten the hardware.

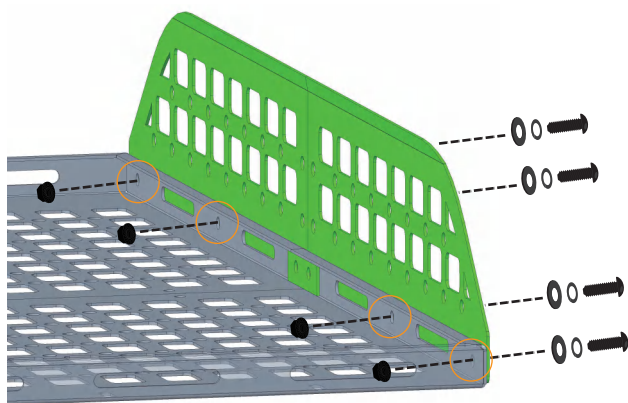
- (2) Reinforcement Plate



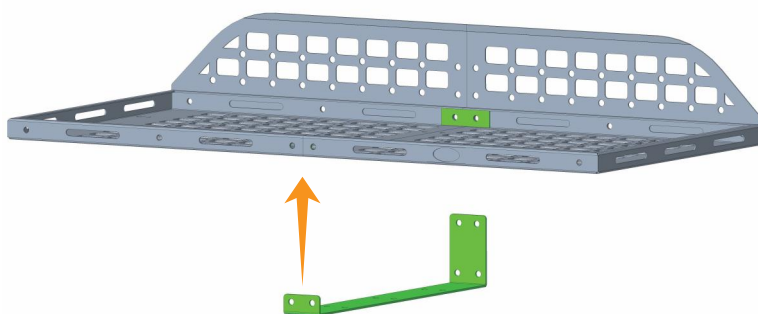
- (2) Back Panel



- (4) M8×20 Button Bolt
- (4) M8×16 Flat Washer
- (4) D8 Split Lock Washer
- (4) M8 Flange Lock Nut

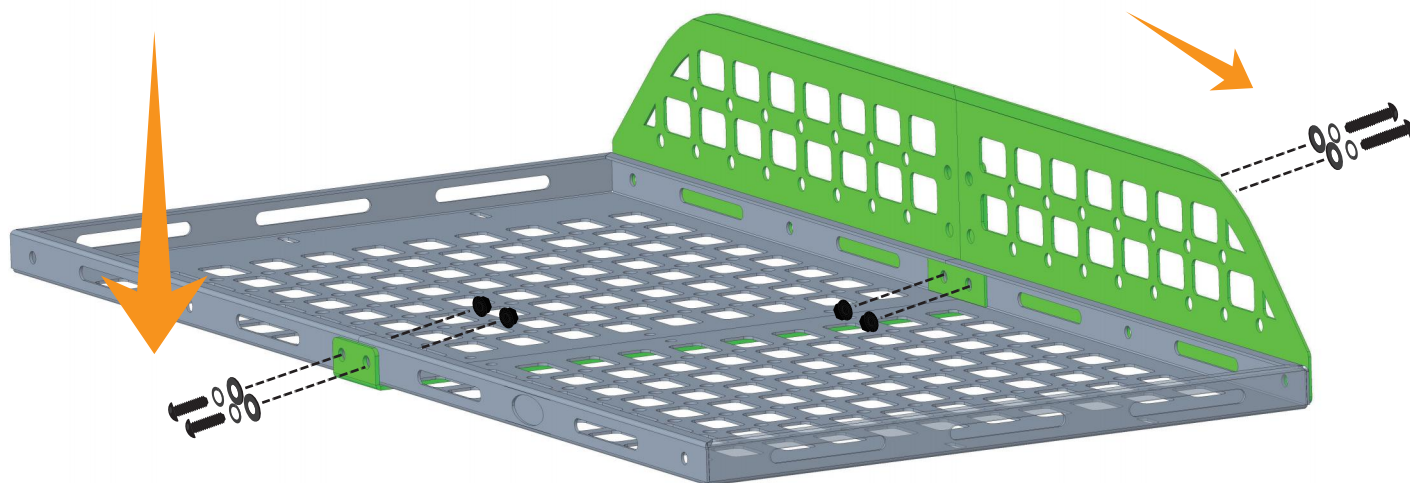


- (1) Reinforcement Bracket



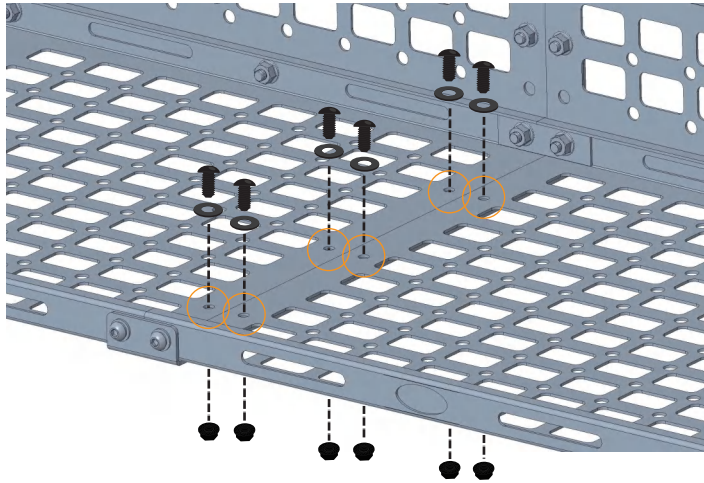
- (2) M8×20 Button Bolt
- (2) M8×16 Flat Washer
- (2) D8 Split Lock Washer
- (2) M8 Flange Lock Nut

- (2) M8×25 Button Bolt
- (2) M8×16 Flat Washer
- (2) D8 Split Lock Washer
- (2) M8 Flange Lock Nut





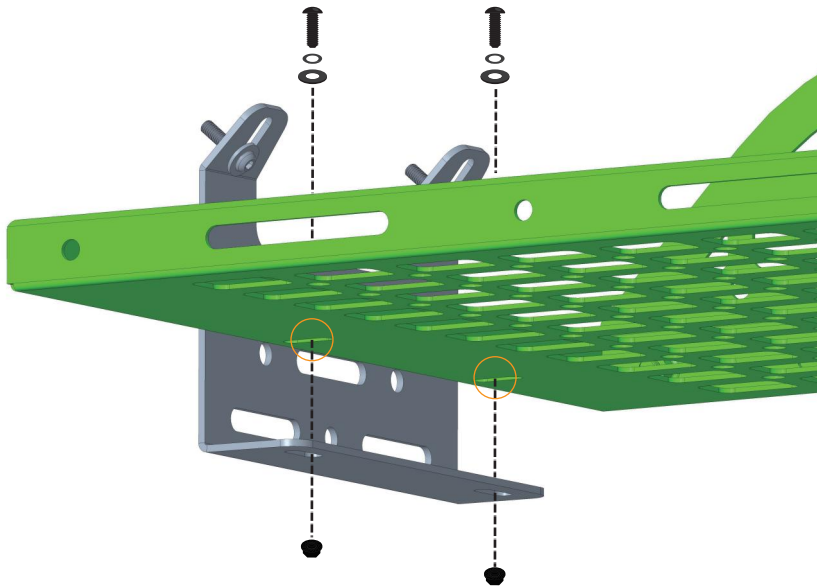
- (6) M8×16 Button Bolt
- (6) M8×16 Flat Washer
- (6) M8 Flange Lock Nut



#### Step 5

Secure the cargo rack to the mounting bracket (A). Adjust it to the desired position. **Finally, tighten all hardware.** Repeat this step on the other side of the vehicle.

- (4) M8×20 Button Bolt
- (4) D8 Split Lock Washer
- (4) M8×16 Flat Washer
- (4) M8 Flange Lock Nut



#### Step 6

The installation is complete. We hope you enjoy a wonderful off-road life with this quality Hooke Road product!

