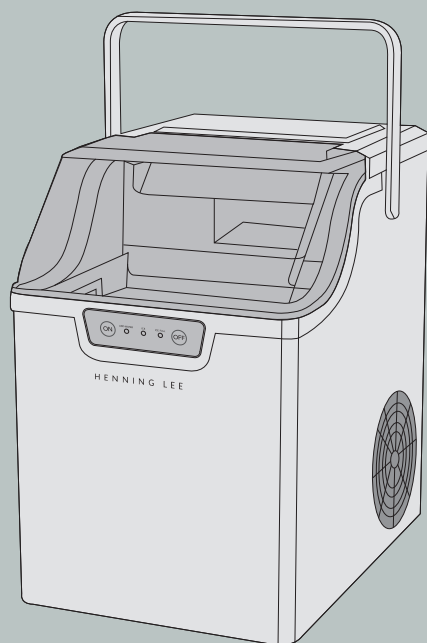




HENNING LEE™

NUGGET ICE MAKER

INSTRUCTION MANUAL



**FOR YOUR SAFETY AND CONTINUED ENJOYMENT OF
YOUR ICE MAKER, ALWAYS READ THE INSTRUCTION
MANUAL CAREFULLY BEFORE USING.**



HENNING LEE™

NUGGET ICE MAKER

IMPORTANT SAFEGUARDS

Please read the following user manual carefully before using the electrical appliance and keep it for future reference.

1. READ ALL INSTRUCTIONS carefully and completely before using the appliance.
2. Use appliance for its intended use only.
3. This appliance should not be used by children or persons with reduced physical sensory or mental capabilities or lack of experience or knowledge. Close supervision is required when using the appliance near children. DO NOT let children play with the appliance or cord at any time.
4. DO NOT let excess cord hang over the edge of a table or cook top/worktop, or touch a hot surface.
5. It is normal for the internal compressor and condenser surfaces to reach high temperatures during operation, so surrounding housing areas may be hot. Be careful not to touch.
6. Your ice maker will ensure your glass is full of nothing but high-quality ice, so long as you take care of your machine. Be sure to clean according to the CARE, CLEANING AND MAINTENANCE section of this manual.

DANGER – To reduce the risk of electrical hazard:

1. If the power cord or appliance is damaged, stop operating the appliance. It must be replaced by a qualified professional.
2. DO NOT place the appliance, power cord or plug in water or other liquids.
3. DO NOT use the appliance on wet or hot surfaces, or near a heat source.
4. DO NOT reach for an appliance that has fallen into water. Unplug the appliance from the receptacle immediately.
5. Always unplug appliance from the receptacle after use. To disconnect, unplug the power cord from the receptacle. DO NOT disconnect by pulling on the cord.
6. DO NOT place the appliance where it can be pulled into the sink or other liquid.
7. Unplug the appliance before cleaning and when not in use.
8. Plug your appliance into an exclusive, properly installed, grounded wall outlet.

NOTICE**Polarized Plug**

WARNING! Shock Hazard: This appliance has a polarized plug where one prong is wider than the other. This plug will fit into a polarized outlet one way only. If the plug does not fit fully in the outlet, reverse the plug. If it still does not fit, contact a qualified electrician. Do not attempt to modify the plug in any way. If the plug fits loosely into the outlet, or the outlet feels warm, do not use that outlet.

Short Power Cord Information

The length of the cord used on this appliance was selected to reduce the hazards of becoming tangled or tripping over a longer cord. If a longer cord is necessary, you may use an approved extension cord, provided the electrical rating of the extension cord is equal to or greater than the rating of the appliance. Care must be taken to arrange the extension cord so that it will not drape over the countertop or tabletop where it can be pulled on or accidentally tripped over.

IMPORTANT TIPS

1. DO NOT tip your appliance on its side. DO NOT turn the ice maker upside down, as this may damage the compressor.
2. Ice machine must be placed on an even, flat surface.
3. NEVER use any other liquids to make ice, other than water.
4. We DO NOT recommend the use of an extension cord, as it may overheat and become a fire risk.
5. Opening the Front Lid for long periods of time can cause a significant temperature increase in the Ice Basket.
6. Due to the normal operation of quick freezing, ice may appear cloudy. This is trapped air in the water and does not affect the quality or taste of ice.
7. Do not use your ice maker outdoors. Place the ice maker away from direct sunlight and make sure that there is 6 inches of space between the back of the appliance and the wall. Keep a minimum of 6 inches of free space on each side of your appliance.
8. If the ice maker is brought inside from a cold environment, give the appliance 3 hours to warm up before plugging in.

BEFORE FIRST USE

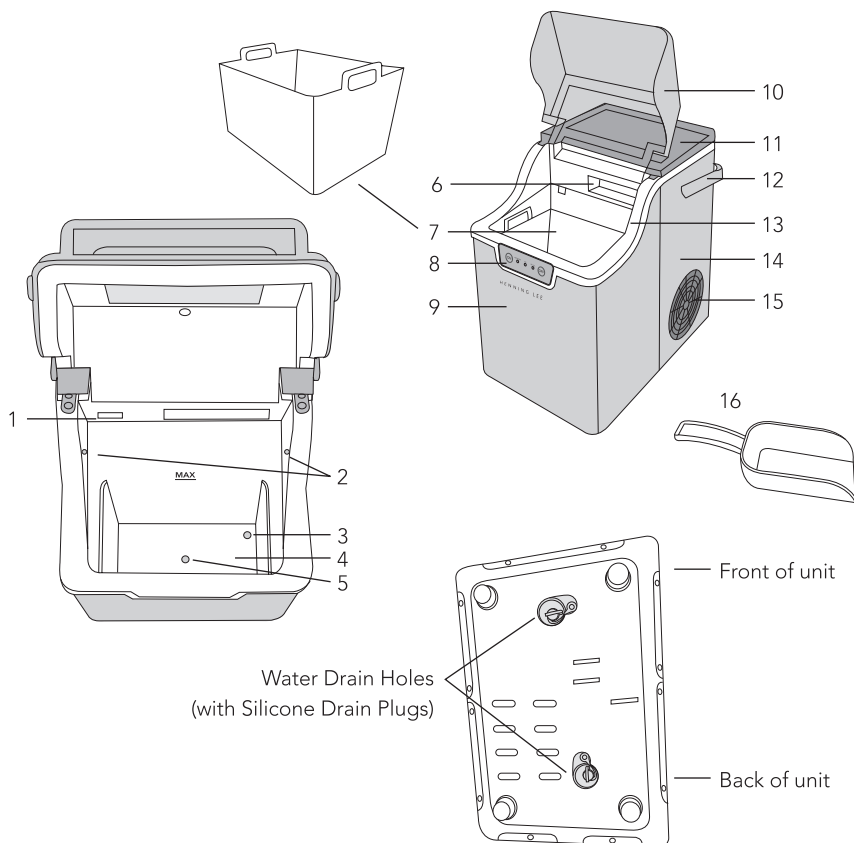
1. Remove the exterior and interior packaging, and check that all the accessories are included. If anything is missing, contact Henning Lee customer service.
2. Remove any tape and remove Ice Bucket and Ice Scoop. Wash Ice Bucket and Ice Scoop in warm, soapy water. Dry thoroughly.
3. Clean the interior (Water Tank) with warm water and soft cloth.
4. Locate your ice maker on a flat, level surface, away from direct sunlight and any other sources of heat (e.g. stove). Make sure there is a minimum of 6 inches of free space on each side of your appliance.
5. DO NOT tip your appliance on its side. DO NOT turn the ice maker upside down, as this may damage the compressor.
6. Let your ice maker sit for 2 hours to allow refrigerant fluid to return to its proper place before plugging unit in. Keep the Front Lid open during this time.

WARNING: Use FILTERED potable water or bottled spring water only.

SAVE THESE INSTRUCTIONS

FOR HOUSEHOLD USE ONLY. DO NOT USE FOR COMMERCIAL PURPOSES.

GET TO KNOW YOUR ICE MAKER



SPECIFICATIONS

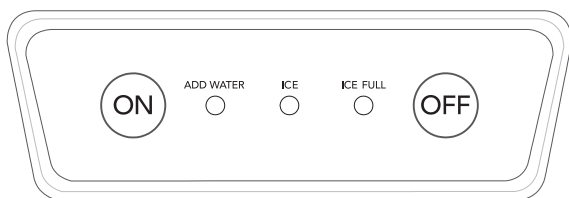
Daily Ice Output: 27 LBS

First Ice Produced: In approximately 5 minutes
(with appliance at room temperature of 68° F)






Ice Storage Capacity: 3.4 LBS

Ice Basket Capacity: 2.7 LBS

Water Tank Capacity: 0.5 GAL / 2 L



Control Panel

	Press to start making ice.
ADD WATER 	The light will illuminate and a long beep will sound. Refill Water Tank with water and restart appliance.
ICE 	Illuminated while appliance is making ice.
ICE FULL 	Illuminated when Ice Basket is full.
	Press to stop making ice and enter into Standby Mode.

OPERATION


1. Open the Front Lid, remove Ice Basket, and fill the Water Tank with water up to the MAX line.

NOTE: The water level in the Water Tank should never rise above the bottom of the Ice Basket.

2. Plug-in the appliance. Appliance will enter into Standby Mode and Ice light on Control Panel will flash.

3. Press 

NOTE: Water will be drawn into unit and appliance will begin working. When the first ice comes out, it will be soft and wet. This is normal and will change in the course of operation.

4. Press  button to stop making ice. Appliance will enter into Standby Mode.

CARE, CLEANING AND MAINTENANCE

How Often:

- Before using your ice maker for the first time, clean thoroughly.
- If your machine has not been used for 48 hours, run the Clean Cycle.
- If you use your machine daily, clean your appliance once per month.

Clean Cycle:

1. Plug in appliance. It will enter Standby Mode. DO NOT immerse appliance in liquid.
2. Remove the Ice Basket and Ice Scoop. Wash these parts by hand or in dishwasher on top rack.
3. Fill the Water Tank just below the MAX line with lukewarm water.
4. Add 1 teaspoon of mild dishwashing liquid to the water and mix together with a kitchen tool or hand, being careful not to scratch the Water Tank.
5. With a soft cloth, clean the interior (Water Tank) of the ice maker.
6. Long press the **ON** button for 5 seconds to start the AUTO CLEAN function. You must press the ON button and hold it in until the AUTO CLEAN function begins. The Add Water and Ice Full lights will illuminate and the water will run from the Overflow Prevention Outlet and cycle through the unit. This will run for 5 minutes and auto stop.
7. Appliance will enter Standby Mode. Ice light on Control Panel will flash.
8. Move the appliance to the edge of your counter and sink, making sure the appliance is steady while also ensuring one of the Water Drain Holes is over the sink.
9. Drain the diluted detergent solution through the Water Drain Hole by removing the Silicone Drain Plug.
10. Repeat steps 8 & 9 for the other Silicone Drain Plug.
11. Replace both Silicone Drain Plugs.
12. Repeat steps 3 and 6 again with clear water. Rinse the interior (Water Tank) of the ice maker with clean, clear water and drain out the Water Drain Hole. Replace Silicone Drain Plug.
13. The exterior of the ice maker & Ice Outlet should be cleaned regularly with a mild detergent solution and warm water.
14. Dry the interior and exterior with a soft cloth.
15. When the appliance is not in use for a long time, be sure to drain the water from the unit. Pull both Silicone Drain Plugs to drain water completely from water reservoir.

TROUBLE SHOOTING

PROBLEM	POSSIBLE REASONS	SOLUTIONS
The compressor works abnormally with a buzzing sound	The compressor was effected during transportation or movement.	Power off immediately. Keep appliance on a flat surface for 24 hours. Restart appliance.
Add Water Indicator Light lights up	• Lack of water	• Stop the ice maker, fill with water, and press ON button to restart unit.
	• Pump is broken	• Call for service.
Indicator lights on Control Panel are not illuminated	Blown fuse or no power	Replace the fuse or turn on power.
Appliance works properly, but no ice is dispensed	Gas leakage	Call for service.
Making ice too slowly	• Vents have been blocked by something	• Remove anything within 6" of any intake/outlet on appliance.
	• Water temperature in inner tank is too high	• Water temperature requirement is between 45° F - 89° F.
	• Refrigeration system malfunction	• Call for service.

1 YEAR WARRANTY

Your Henning Lee product is warranted to be free from defects in material and workmanship for a period of one (1) year from the date of the original purchase when utilized for normal and intended household use. This warranty excludes damage caused by accident, overheating, misuse or abuse, and does not apply to scratches, discoloration, stains, dents, or other damage that does not affect the function of the product. Should any defect covered by the terms of the limited warranty be discovered within one (1) year, we will repair or replace the product or part. To process a warranty claim, contact Customer Care at 1 (866) 757-2333 for assistance. Our Customer Care team will assist you by troubleshooting minor problems. If troubleshooting fails to fix the problem, a return authorization will be issued. Proof of purchase indicating the date and place of purchase is required and should accompany the return. You must also include your full name, shipping address, and telephone number. We are unable to ship returns to a PO box. We are not responsible for delays or unprocessed claims resulting from a purchaser's failure to provide any or all of the necessary information. Shipping costs will be prepaid by the purchaser.

Send all inquiries to customer care@henninglee.com. There are no express warranties except as listed above.

REPAIR OR REPLACEMENT AS PROVIDED UNDER THIS WARRANTY IS THE EXCLUSIVE REMEDY OF THE CUSTOMER. HENNING LEE SHALL NOT BE LIABLE FOR ANY INCIDENTAL OR CONSEQUENTIAL DAMAGES OR FOR BREACH OF ANY EXPRESS OR IMPLIED WARRANTY ON THIS PRODUCT EXCEPT TO THE EXTENT REQUIRED BY APPLICABLE LAW. ANY IMPLIED WARRANTY OF MERCHANTABILITY OR FITNESS FOR A PARTICULAR PURPOSE ON THIS PRODUCT IS LIMITED IN DURATION TO THE DURATION OF THIS WARRANTY.

Some states do not allow the exclusion or limitation of incidental or consequential damages, or limitations on how long an implied warranty lasts. Therefore, the above exclusions or limitations may not apply to you. This warranty gives you specific legal rights and you may also have other rights, which vary from state to state.

All Henning Lee products are tested by accredited independent laboratories.



Use your camera on your phone to scan the QR Code for user tips.

Something wrong? Don't worry!

Contact us first and give us a chance to make it right!

If you are missing parts, received a damaged product, or need assistance with "how to use", we are here to help!

Call us at 866.757.2333 or email us at customercare@henninglee.com. M-F (9am – 5pm CT)