

Installation Instructions

Milu PIR Motion Sensor, 12V



PRODUCT OVERVIEW

The Expella PIR motion sensor incorporates advanced technology to automatically activate a Milu odourless toilet when motion is detected.

The sensor field of view has been designed to function within a small space to isolate the operating zone to a 2m range. This minimises false triggers.

Once motion is detected the odourless fan switches on. While motion is present the fan stays on. When no motion is present, the fan runs on for a period of 5 minutes before turning off.

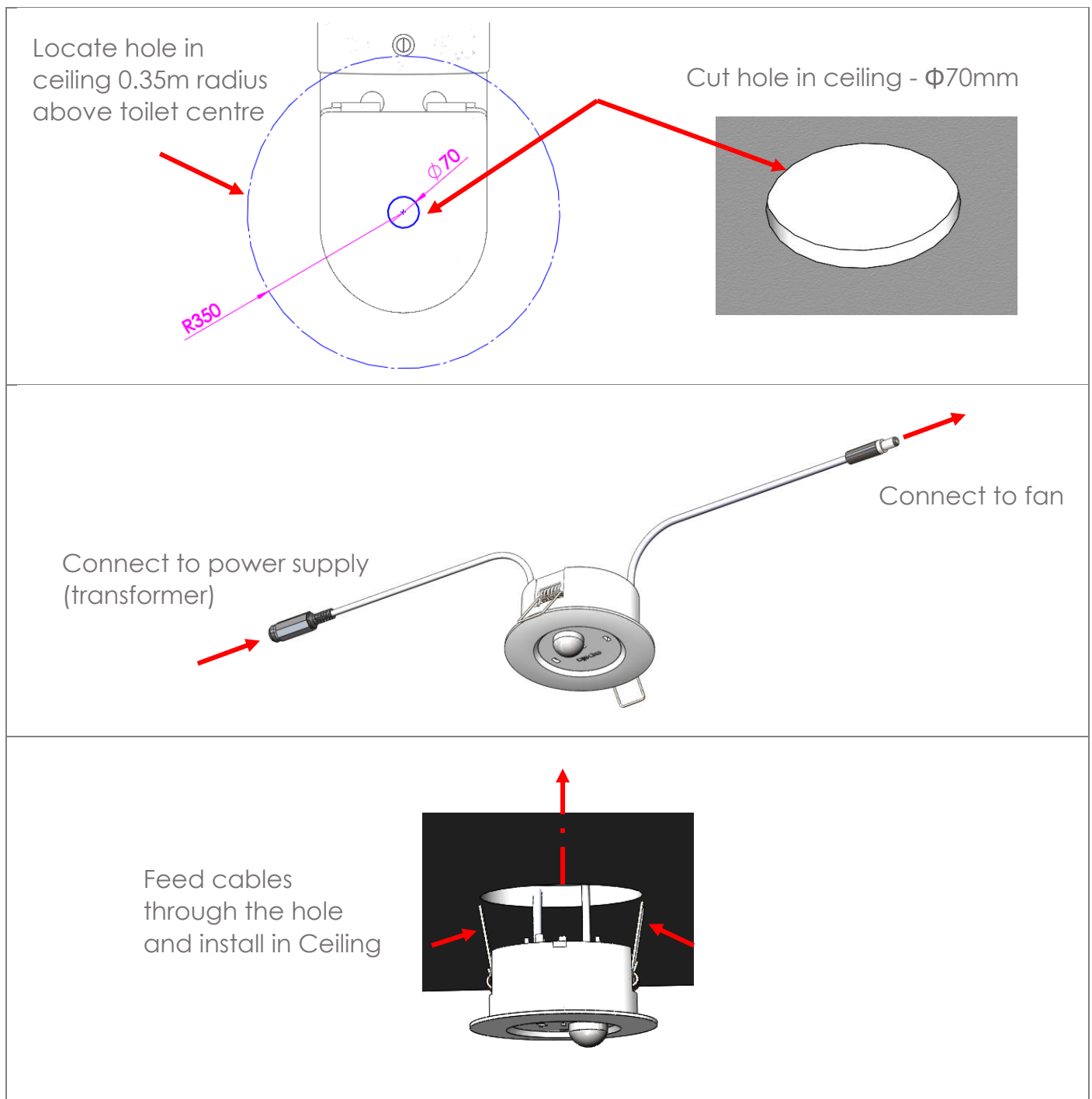
Tools Required

- 70mm hole saw

Procedure

The PIR Motion sensor installs electrically in-line with the odour control fan and fan power supply (transformer)

Locate a position in the ceiling above the toilet. The sensor should be located within a 0.35 meter radius above the toilet pan. Ensure there are no structural members in this location that inhibit installation. Location should be in reach of the 12V transformer cable and fan power cable/connector used to power the odourless toilet.



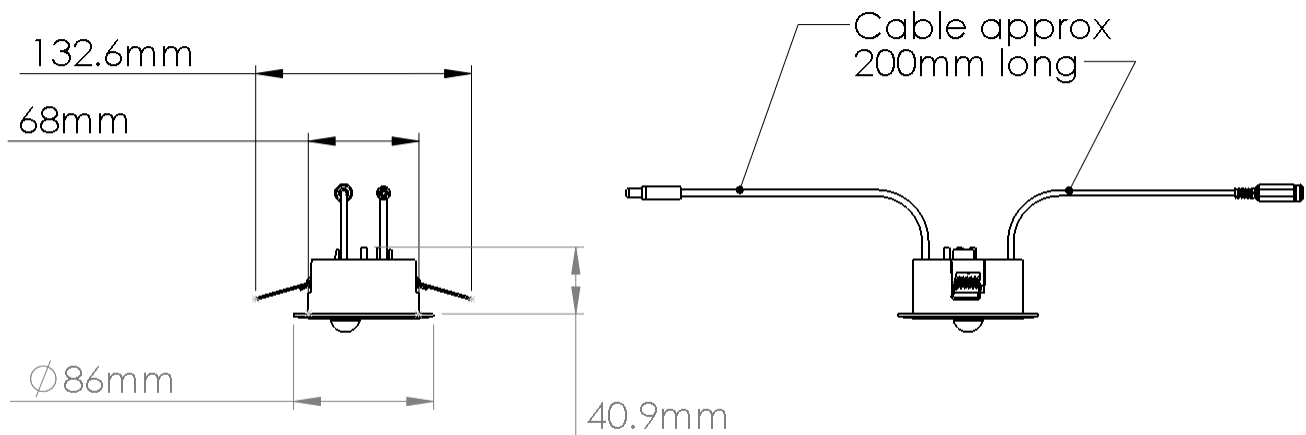
TEST OPERATION

1. Turn on power supply. Fan will start
2. Leave the room and wait for fan to turn off (approx. 5mins)
3. Enter room and move in to sensing region (approx. 0.5m radius from sensor)
4. Fan should turn on again for 5 mins
5. Sensor may need rotating in the ceiling to better align with the target

SPECIFICATION

Input/Output Voltage	Current (max)	Sensor Range	Run on time period
9-12 VDC	1.5 A	0.5m Radius	5 mins

DIMENSIONS



Head Office & Distribution Warehouse

281 Heads Road, Whanganui
06 349 0194 or 0800 728 662
sales@newtech.co.nz
www.newtech.co.nz