

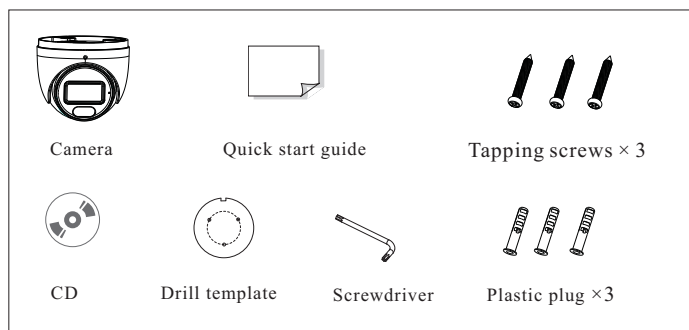
# Network Camera Quick Start Guide

- Please read this instruction carefully before operating the unit and keep it for further reference.
- All the examples and pictures used here are for reference only.
- The contents of this manual are subject to change without notice.

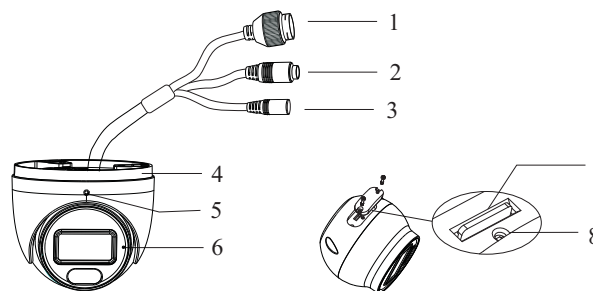
## 1 Warning and Caution

- If the product does not work properly, please contact your dealer or the nearest service center. Never attempt to disassemble the camera yourself. (We shall not be responsible for any problems caused by unauthorized repair or maintenance.)
- Do not allow water or liquid intrusion into the camera.
- In the use of the product, you must be strict compliance with the electrical safety regulations of the nation and region. When the product is mounted on wall or ceiling, the device shall be firmly fixed.
- Do not use camera beyond specified voltage range.
- Do not drop the camera or subject it to physical shock.
- The product must be grounded to reduce the risk of electric shock.
- Avoid touching the camera lens.
- If cleaning is necessary, please use clean cloth to wipe it gently.
- Do not aim the camera at the sun or extra bright place.
- Do not place the camera in extremely hot, cold (the operating temperature shall be -30°C~60°C), dusty or damp locations, and do not expose it to high electromagnetic radiation.
- To avoid heat accumulation, good ventilation is required for operating environment.

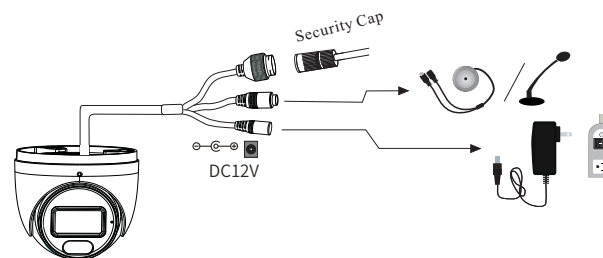
## 2 Package



## 3 Overview



1	Ethernet connector	5	Fixed screw
2	Audio input	6	Microphone
3	Power connector	7	Micro SD card slot
4	Mounting base	8	Reset



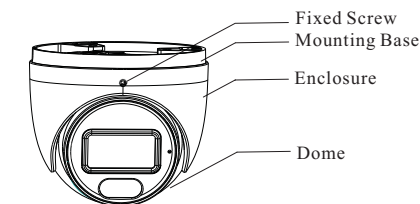
\* 1 It is recommended to install the security cap for outdoor installation.

\* 2 If the PoE switch is used to power the camera, DC12V power supply is not required.

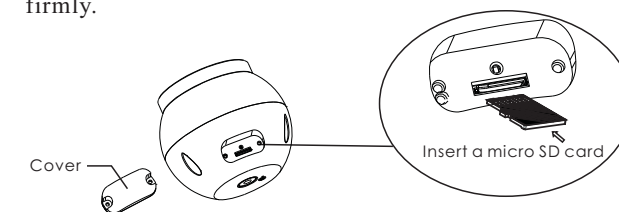
## 4 Installation

Please make sure that the wall or ceiling is strong enough to withstand 3 times the weight of the camera. Please install and use the camera in the dry environment.

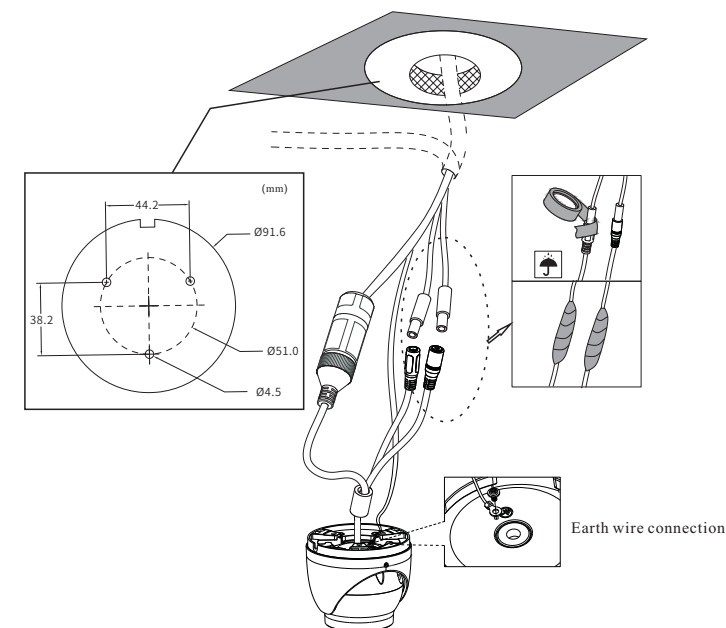
① Loosen the fixed screw to disassemble the camera.

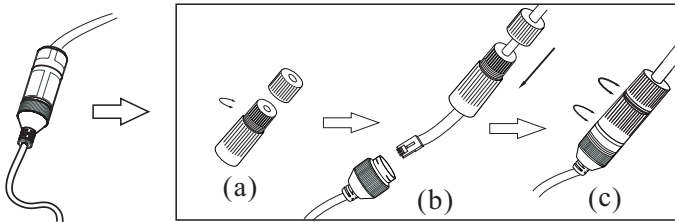


② Unscrew the cover of the dome and then insert a micro SD card. After that, install back the cover and make sure the cover is installed firmly.



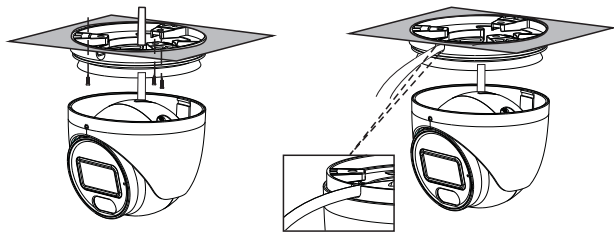
③ Drill the screw holes and the cable hole on the ceiling according to the drill template. Then route and connect the cables.



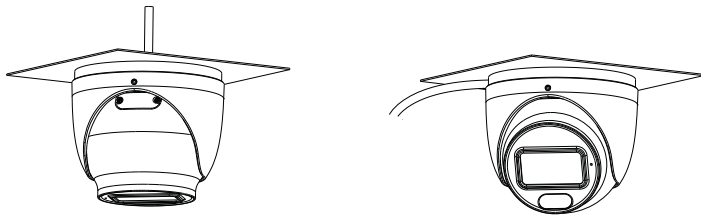


- (a). Loosen the nut from the main element.
- (b). Run the network cable (without RJ 45 connector) through the both elements. Then crimp the cable with RJ 45 connector.
- (c). Connect the cable to the hermetic connector. Then tighten the nut and the main cover.

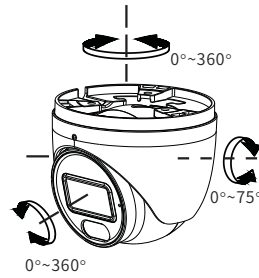
- ④ Secure the mounting base to the ceiling or wall with the screws provided.



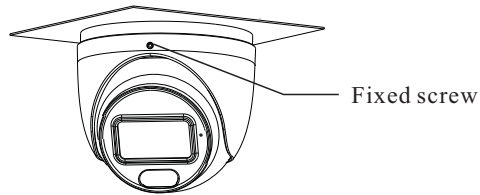
- ⑤ Install the dome and enclosure to the mounting base.



Then adjust the dome to obtain an optimum view angle.



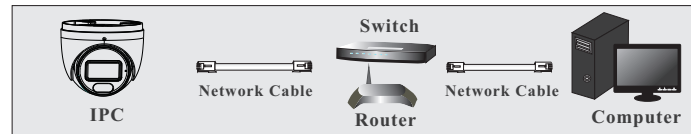
- ⑥ Finally, fix the camera with the fixed screw.



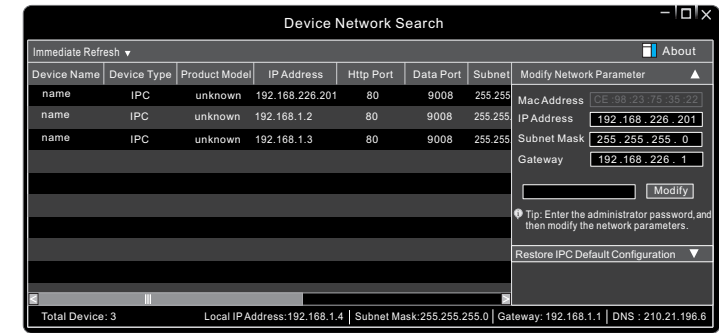
## 5 Network Connection

Here we take using IE browser to access IP camera via LAN for example.

### ● Access Through IP-Tool



- ① Make sure that the camera and the PC are connected to the local network.
- ② Install IP-Tool from the CD and run it after installation.



- ③ Double click the camera information listed in the IP-Tool to open the web browser. Or manually enter the default IP address in the address bar of your browser.  
The default IP address of this camera is **192.168.226.201**.  
Then follow directions to download and install the plugin if it is the first time for you to log in.
- ④ Activate and log in the camera. The default username is **admin**; the default password is **123456** or you need to self-define the password. Please operate according to the actual situation.