



HALO

Product Guide

Recessed | Track | Surface | Outdoor | Smart Lighting

HALO

Our innovative, high-quality lighting products enhance any space. And they're engineered with features that make installation faster and more flexible so you can deliver the right light every time.

Discover new ways to simplify installation, reduce material costs, and save energy with **HALO**.

Where to Buy

Find a local retailer or distributor near you.



cooperlighting.com/buy



For 26 years in a row, Builder Magazine readers have voted **HALO** their top lighting brand. We are humbled and grateful to be recognized each year by all those who entrust us with their lighting needs.

Thank you.



3 Ways to Install Downlighting

Canless Direct Mount

Canless downlights come with their own remote junction box and mount directly to the ceiling—no housing required. They come in complete array of sizes, shapes, and styles for regressed or adjustable downlighting along with ultra-slim fixtures that install virtually anywhere.



Surface Mount

Low-profile, unobtrusive surface mount downlights fit junction boxes and sit flush with ceiling for a sleek downlight appearance.



Housings & Trims

Choose from a complete series of remodel and new construction housings to complement our innovative high-quality recessed LED trims that install into new or existing cans.

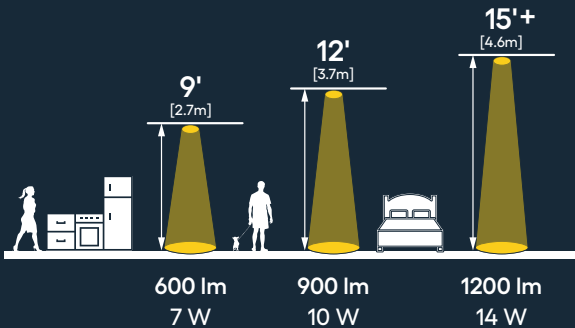


Fixture Features

Flexibility at your fingertips.



Most HALO fixtures have selectable technology to help you get the perfect light. Adjust color temperature with the SeleCCTable switch or increase the overall brightness with a Lumen Select fixture.



Choose between lumen setting options depending on your ceiling height or desired light level.

Example for 3 lumen level setting.

Set the mood.



Dim-to-Warm is a stunning lighting effect that allows specific preferred and premium HALO downlights to transition smoothly from bright white (3000K) to a cozy candlelight (1800K) as they are dimmed.

Housings



Recessed Housings

3", 4", 5", & 6"
New Construction
and Remodel Housings

- Compact and economical construction
- Suitable for 2 x 6 framing plenum construction
- Integral thermal protector guards against over-lamping
- Compatible with 120V HALO LED modules
- Airtight and suitable for direct contact with insulation



Ultra Shallow

4" New Construction and Remodel Housings

- Ultra-shallow housing, compatible with HALO 4" LED modules/trims
- Suitable for 2x4 framing or shallow plenum construction
- IC rated to be in direct contact with insulation
- Housing adjusts for 1/2" to 1-1/4" ceiling thickness
- Single-wall, deep-drawn matte black aluminum housing



Fire Rated

4", 5", & 6"
New Construction Housings

- Prevents the passage of flames and toxic gases into ceiling plenums
- Fire rated for up to 2 hours in accordance with UL 263
- Compatible with 120V HALO LED modules
- Suitable for multi-family and mixed-use applications
- Airtight and suitable for direct contact with insulation

Patented HALO Housing Features



Pre-installed, toolless strain reliefs eliminate the need for additional NM cable connectors.



Pre-installed, push-in wiring connectors.



Pre-installed gasket. No caulk required. ASTM E283 compliant.



Learn More



Hinged cover on junction box for easy access and secure retention. Box is repositionable by 90°.



Precisely aligned, pre-installed nail with mini leveling foot.



Inverted "q" interlocking channel for rigidity and stability. Pass-N-Thru bar hangers allow toolless shortening.

Canless New Construction Mounting Frames and Smash Plates

Are you using regular housings on new construction projects but want to try canless? HALO Canless Mounting Frames install just like a recessed housing and hold the fixture's position and junction box during rough-in.

[Learn More](#)



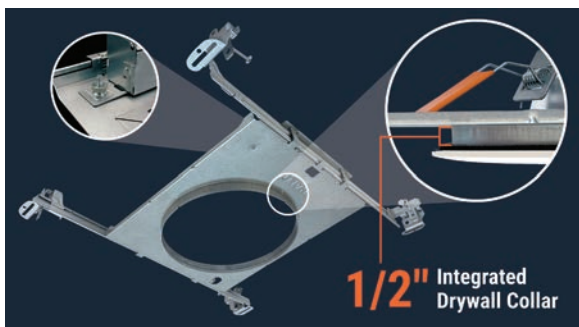
Canless Mounting Frames



Smash Plates

1 Round Mounting Frame with Drywall Collar

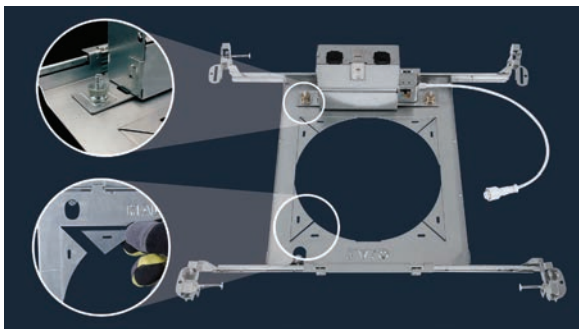
These 4" and 6" mounting frames include an integrated 1/2" collar that makes it easy to locate and cut the drywall from below the ceiling.



2 Round-to-Square Flat Mounting Frames

Breakaway tabs allow these frames to be used with both round and square canless fixtures.

Available in 3", 4", 6", and 8" sizes.

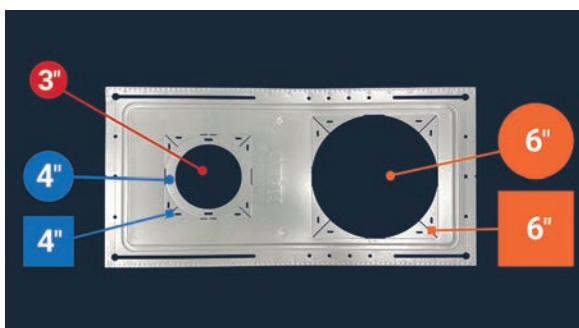


3 New Construction Smash Plate

Breakaway tabs allow the smash plates to be used with both round and square canless fixtures.

Multiple alignment features to enable consistent placement and full coverage between 12- and 24-inch joists

Compatible with 3" round, 4" round and square, and 6" round and square.



Slim Canless

NO HOUSING REQUIRED



Fixtures so thin they install virtually anywhere - no housing required.

1/2" thin



[Learn More](#)
Slim Canless



HLBE & HLBSL

Slim Canless

- 4", 6"
- Round
- Smooth Lens
- 3000K / 5CCT



HLBPH

Slim Canless

- 4", 6"
- Round
- Smooth Lens
- 6CCT



HLB

Slim Canless

- 3", 4", 6", 8", 12"
- Round / Square
- Prismatic Low-Glare Lens
- 5CCT
- Lumen Select
- Phase Cut / 0-10V



HLBC & HLBC+ 2-in-1 Install

Slim Regressed Canless

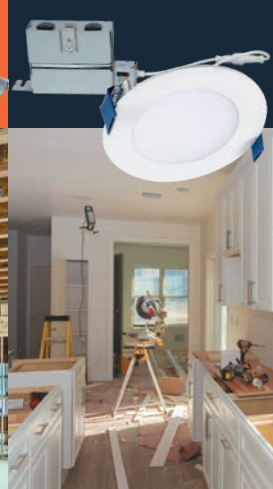
- 4", 6"
- Round / Square
- 5CCT + Dim-to-Warm
- Lumen Select
- Phase Cut / 0-10V



New Construction



Remodel



Canless

**NO HOUSING
REQUIRED**



Match the quality and visual comfort of traditional downlighting with recessed and adjustable canless LED fixtures.



Learn More
Canless



selectable
colors



selectable
lumens



dim-to-warm



DIMMABLE



CJB & CJB+ 2-in-1 install Canless

- 4", 6"
- Round
- 5CCT



LT Recessed Canless

- 4", 6"
- Round
- Baffle
- 5CCT



RL Recessed Canless

- 4", 6"
- Round
- Baffle
- 5CCT + Dim-to-Warm
- Lumen Select



RLNL Night Light Canless

- 4", 6"
- Round
- Baffle
- 5CCT + Dim-to-Warm
- Downlight & Night Light



LCR Light Commercial Canless

- 2", 4", 6", 8"
- Round
- Splay / Baffle
- Downlight / Wall Wash
- Dual-Dim (Phase Cut + 0-10V) / 0-10V
- 6CCT
- Emergency Battery Option



Adjustable Canless



HLA Gimbal

Canless Adjustable

- 3", 4"
- Round / Square
- 5CCT



RA Baffle Gimbal

Canless Adjustable

- 4", 6"
- Round
- Baffle
- 5CCT + Dim-to-Warm
- Lumen Select



RLS Slope

Canless Adjustable

- 4", 6"
- Round
- Baffle
- 5CCT



Fire Rated Canless



RLFR Recessed

Canless Fire Rated

- 4", 6"
- Round
- Baffle
- 5CCT



HLBFR Recessed

Slim Canless Fire Rated

- 4", 6"
- Round
- Prismatic Lens
- 5CCT



- Suitable for use in multi-family and mixed use applications.
- No need to build additional fire rated enclosures.



[Learn More](#)

Canless Fire Rated

ML Flex

Functional, Meet Flexible

- 1", 2", 3", 4"
- Round / Square
- Smooth / Baffle
- 5CCT / D2W
- Lumen Select
- Phase Cut / 0-10V

Elevate spaces with the sleek and modern designs of this high-end fixture series. Striking, small-aperture luminaires with precision-engineered trims create inviting, low-glare environments.

With ML Flex, you can downlight, adjust, and wall wash with fixtures that boast advanced color and lumen seleCCTable™ technology along with flicker-free dimming below 5%. The Flex Series delivers ideal lighting in any application — residential or commercial.

Experience the ultimate in style, functionality, and affordability with HALO.



Learn More
ML Flex Series



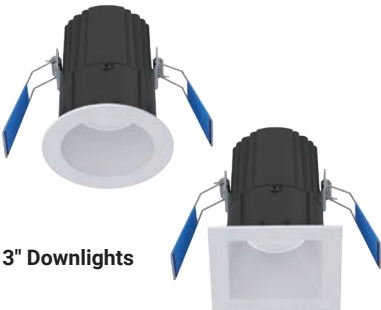
ML Flex Downlights



1" Downlights



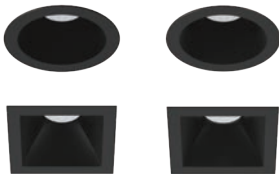
2" Downlights



3" Downlights



4" Downlights



1", 2", 3" & 4" Downlights
Smooth | Baffle



3" & 4" Wall Wash
Smooth

**Flushmount
Mud-in**

- 2", 3", & 4"
- Downlights,
Wall Wash, &
Adjustables
- Round & Square

ML Flex Adjustables



2" Adjustables



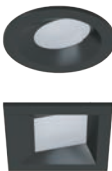
3" Adjustables



4" Adjustables

Aim & Focus

The ML Flex Adjustables have locking adjustment mechanisms that provide 360° of rotation and 35° of tilt.



2", 3" & 4" Adjustables
Smooth

Flex New
Construction
Mounting Frames



Canless-to-Can

2-in-1 Installation

HALO 2-in-1 products create visual consistency regardless of installation method. They mount directly to ceilings wherever new lights are needed and can convert to install into preexisting housings.

2ⁱⁿ1

installation



HLBC & HLBC+ 2-in-1 Install Slim Canless LED Downlights

- 4", 6"
- Round / Square
- Prismatic Lens
- 5CCT+D2W
- Phase Cut / 0-10V



With its 1/2"-thin design, the HLBC installs virtually anywhere while providing a regressed baffle below the ceiling that improves visual comfort. Round fixtures transform with a variety of round or square trim options. Packed with features, the HLBC+ is our most versatile slim canless fixture with 6-position color select, Lumen Select, and 2-in-1 installation for canless-to-can installs.



CJB & CJB+ 2-in-1 Install Canless LED Downlights

- 4", 6"
- Round
- 5CCT



HALO CJB fixtures have an integrated j-box for fast wiring and installation on remodeling projects. The CJB+ 2-in-1 can be quickly configured for retrofitting into existing housings.



[Learn More](#)

CJB Series



[Learn More](#)

HLBC Series



QuickLink

Low Voltage System



connect
up to
13
lights

Installing downlights has never been faster!

QuickLink delivers the fastest downlighting installation HALO has to offer. Power multiple canless lights with the single remote power supply. Connect fixtures to the included low voltage cable in seconds with QuickLink Twist Connectors.

Just select a QuickLink Starter Kit, which includes the remote power supply, low voltage cable, and a multi-pack of canless downlights; then add individual fixtures to complete your project.



Power fixtures in seconds with QuickLink Twist Connectors.



**SAVE
UP TO 85%
IN WIRING TIME**

QuickLink Options

Kits include remote power supply + low voltage cable & a multi-pack of fixtures.

HLBQL Slim Canless Downlights

Starter Kits & Additional Fixtures

4", 6" • Round • Phase Cut / 0-10V



LTQL-DM Regressed Canless Downlights

Starter Kits & Additional Fixtures

4", 6" • Round • Phase Cut



RLQL-DM Regressed Canless Downlights

Starter Kits & Additional Fixtures

4", 6" • Round • 0-10V



[Learn More](#)

QuickLink Low Voltage

Surface Mount

Low profile, high performance. HALO surface products mount to standard junction boxes below the ceiling for a sleek downlight appearance.



Learn More
Surface Mount



HLCE Disk Lights Surface Mount Bulk Packs

- 4", 6"
- Round
- 30/40/5000K & 5CCT



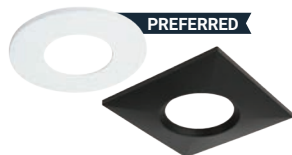
HLS Disk Lights Surface Mounts

- 4", 6", 9", 9" + Motion Sensor
- Round
- 5CCT



FM Flush Mounts Flush Mounts

- 8", 11", 15"
- Round
- 3CCT / 5CCT



JBD Slim Surface Surface Mounts

- 4"
- Round / Square
- Flat / Baffle
- 5CCT



SMD Square Edge Surface Mounts

- 4", 6"
- Round / Square
- 5CCT



SMX Edgeless Surface Mounts

- 4", 6", 8", 14", 18"
- Round / Square
- 5CCT + Dim-to-Warm
- Lumen Select
- Phase Cut / 0-10V



SMX Series

Edgeless Surface Mount LED Downlight

- 4", 6", 8", 14", & 18"
- Round / Square
- 5CCT + Dim-to-Warm
- Lumen Select
- Phase Cut / 0-10V



With a fully luminous lens face, this series provides exceptional light quality with a sleek, edgeless design that blends effortlessly into any ceiling. The innovative mounting method ensures a hassle-free installation that seats the fixture securely against the ceiling in either junction boxes or recessed housings. Upgrade your lighting experience with the SMX series and enjoy a seamless blend of style and functionality.



selectable
CCT colors



selectable
lumens



dim-to-warm



DIMMABLE



Paintable
Matte White



Satin Nickel



Tuscan
Bronze



Matte Black



[Learn More](#)

SMX Series

Recessed LED Trims

These integrated fixtures easily install into recessed housings.



[Learn More](#)
Recessed LED Trims



LT Recessed Baffle

- 4", 5"/6"
- Round
- Baffle / Smooth
- 5CCT



HLBT Slim

- 4", 6"
- Round
- Smooth Lens
- 5CCT



RL Recessed Baffle

- 3", 4", 5"/6"
- Round
- Baffle / Smooth
- 5CCT + Dim-to-Warm
- Lumen Select



RLD Deep Baffle

- 4", 5"/6"
- Round
- Baffle
- 3000K



RL-NL Night Light

- 4", 5"/6"
- Round
- Baffle
- 5CCT + Dim-to-Warm
- Downlight & Night Light



RSQ Recessed Squares

- 4", 5", 6"
- Square
- 5CCT + Dim-to-Warm
- Lumen Select



Adjustable LED Trims



LA Gimbal

- 4", 5"/6"
- Round
- Baffle
- 3CCT
- Adjustable LED Trims



RA Gimbal

- 3", 4", 5"/6"
- Round
- Baffle
- 5CCT + D2W
- Adjustable LED Trims



ML4 Series

4" Canless & Recessed LED Modules

4" • Round & Square • Conical, Pinhole / Wall Wash
Lensed / Open • D2W / 5CCT • Phase Cut / 0-10V
Regressed LED Trim / Canless Downlight



The ML4 Modular LED System brings simplified flexibility to residential and commercial downlighting.



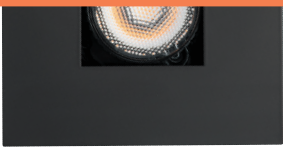
LED Trim Module w/
Matte White Conical Trim



Canless LED Downlight w/ Matte
White, Black Baffle Pinhole Trim



Matte White



German Bronze



Brushed Copper

Complete your projects with beautifully finished magnetic trims and accessories.

Matte Black



Brushed Nickel



Oil Rubbed Bronze



The compact design fits shallow spaces and interchangeable optics deliver accurate beams of light.



25°
Narrow Flood



40°
Flood



55°
Wide Flood



25° Narrow Flood
Asymmetric/Wall Wash



[Learn More](#)

ML4 Series

HL36 Series

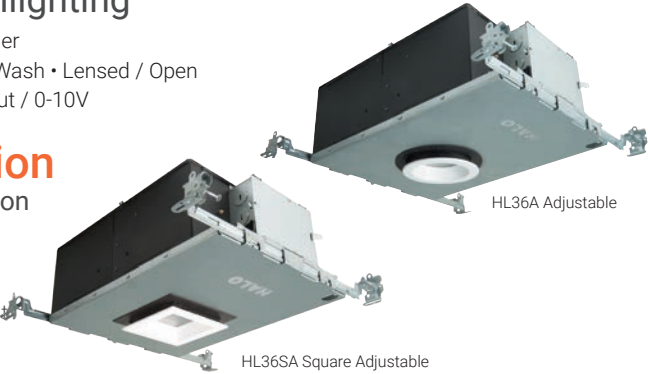


Architectural Downlighting

3" • New Construction & Remodeler
Round & Square • Conical / Wall Wash • Lensed / Open
D2W/27/30/35/4000K • Phase Cut / 0-10V

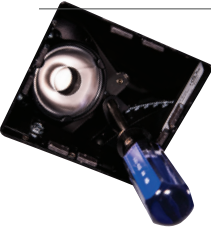
New Construction Seamless Ceiling Integration

Suitable for 2x6 residential or shallow plenum commercial projects with a broad range of trims and an optional adapter that allows for rimless installation.



HL36A Adjustable

HL36SA Square Adjustable



New Construction Aim & Focus

Hidden above the ceiling and adjustable from below - HL36 new construction housings offer locking adjustment mechanisms that allow for 365° of rotation and 45° of tilt, along with interchangeable optics to meet any aiming angle.



15°
Spot



25°
Narrow Flood



40°
Flood



55°
Wide Flood



New Construction Rimless Adapter

Round and square new construction housings can be installed with the rimless adapter. Combined with one of the HALO flangeless trims, the mudded-in, knife-edge finish creates a stunning 'quiet ceiling' appearance.



Open



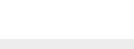
Lens



Wall Wash

Trim installation

Each HL3 housing is fitted with rare earth Neodymium magnets that securely hold the trim in place. This allows for subtle repositioning to align apertures.



[Learn More](#)

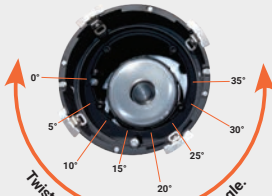
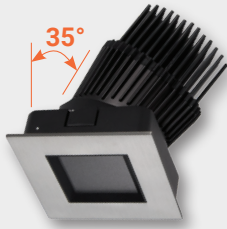
HL36 Series

HL36AR Remodelers

No Housing Required

Remodeler Aim & Focus

Just like the new construction housings, the HL36 Remodelers have angle markings to assist in repeatable settings. Similar locking adjustment mechanisms provide 360° of rotation and 35° of tilt.



Undercabinet - HU11 & HU30M

Modern, Sleek, and Energy-Efficient

HALO Undercabinets are ideal for task, accent, or cove lighting in kitchens, offices, or utility rooms. A low-profile design keeps HALO Undercabinet fixtures tucked up and out of sight while delivering plenty of bright, energy-saving LED light.

- 9", 18", 24", 36" and 48"
- 3CCT / 5CCT + Dim-to-Warm



[Learn More](#)

Undercabinet

Track - 811 & 812

Form, function, and flexibility for residential, architectural, and commercial spaces.

When it comes to creating a captivating atmosphere that leaves a lasting impression, accent lighting is key. With exceptional lighting features, the HALO fleet of track fixtures are designed to create striking lighting that can be tailored to fit multiple track systems, making them a versatile and practical choice for any space.



[Learn More](#)

Track

HALO Smart Wi-Fi® Lighting

Set the mood with RGB and warm to cool options using the WiZ App or your favorite compatible voice assistant.

16 Million Colors



Tunable White



Bluetooth®

Connected by
WiZ
PRO

EVERYDAY FEATURES

Control anywhere

Preset modes

Automation

PRO FEATURES

App for installers

Pre-Wi-Fi commissioning

Online dashboard

Live Smarter in Full Color

Illuminate spaces with the perfect lighting. Set the mood with 16 million colors + white tuning using the WiZ App or preferred compatible voice assistant. WiZ Pro also provides the features and tools installers need to setup and manage multiple projects with speed and efficiency.

SPACESENSE™
Your lights now detect movement for daily convenience

MUSIC SYNC
Your lights react to music for a perfect mood

PRESENCE SIMULATION
Your lights simulate a presence at home when away

LIGHT ALARM
Your lights react to motion detection when away

works with
Siri Shortcuts

works with
alexa



RL Smart Wi-Fi® LED Trims

- 4", 5"/6"
- Round
- Baffle / Splay



HLB Smart Wi-Fi® Slim Canless

- 4", 6"
- Round
- Smooth Lens



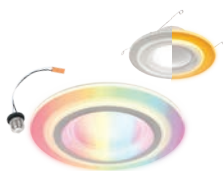
RL Smart Wi-Fi® Canless

- 4", 6"
- Round
- Baffle



RA Smart Wi-Fi® Canless Gimbal

- 4", 6"
- Round
- Baffle



RLDZ Dual Zone Smart Wi-Fi® LED Trims

- 4", 5"/6"
- Round
- Baffle



RLDZ Dual Zone Smart Wi-Fi® Canless

- 4", 6"
- Round
- Baffle



ESF Smart Wi-Fi® Motion Floodlights

- Twin Head



ESF Smart Wi-Fi® Floodlights

- Twin Head



[Learn More](#)

Smart Lighting

Outdoor



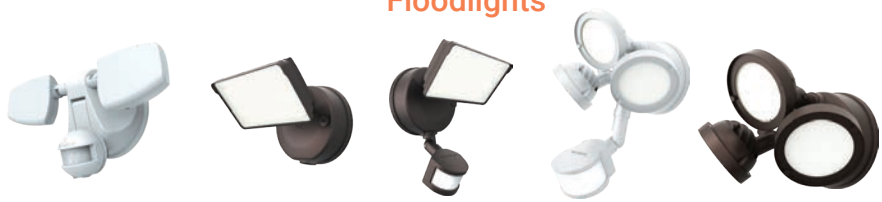
Illuminate the path forward

HALO Outdoor Lighting offers exceptional quality and innovative solutions for residential and commercial spaces. Our range includes customizable color temperatures, adjustable lumen outputs, motion sensors, and dusk-to-dawn automation. Discover the perfect blend of style, functionality, and energy efficiency with HALO's cutting-edge technology.

Area & Site



Floodlights



Solar Lights



Wall and Ground Mount



Vaportite



Learn More
Outdoor

HALO

ACCELERATING INNOVATION
AT THE SPEED OF LIGHT



LEARN MORE
about our partnership



Cooper Lighting Solutions is a Signify business.
Official Lighting Partner of Mercedes-AMG PETRONAS F1 Team

 **signify**

Official Lighting Partner



AMG
PETRONAS
FORMULA ONE TEAM

ML Flex



HALO



© 2025 Cooper Lighting Solutions
All Rights Reserved
Printed in USA
Publication No. BR51802025

Cooper Lighting Solutions
1121 Highway 74 South
Peachtree City, GA 30269
P: 770-486-4800
www.cooperlighting.com

Canada Sales
5925 McLaughlin Road
Mississauga, Ontario L5R 1B8
P: 905-501-3000
F: 905-501-3172

All other trademarks are property of their respective owners. Product availability, specifications, and compliances are subject to change without notice.

Where to Buy



cooperlighting.com/buy