

European switches & sockets

INSTRUCTIONS

Example wiring	1
Installing Kew front plates	3
Installing Grove front plates	4
Using clear & paintable front plates	5

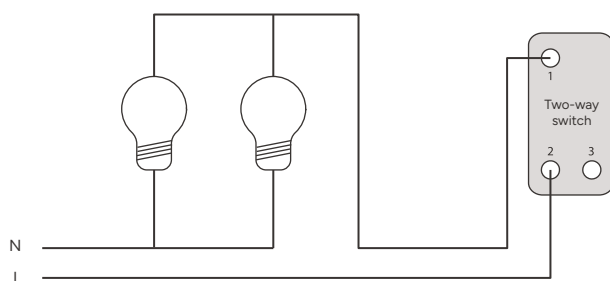
Example wiring

Isolate the power supply at the consumer unit circuit breaker. Check that the power is off. These products must be installed by a qualified electrician in accordance with the latest building regulations.

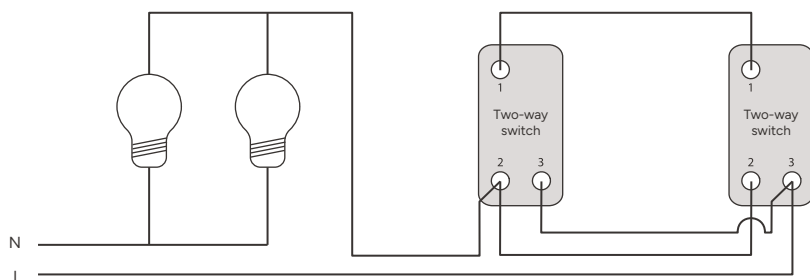
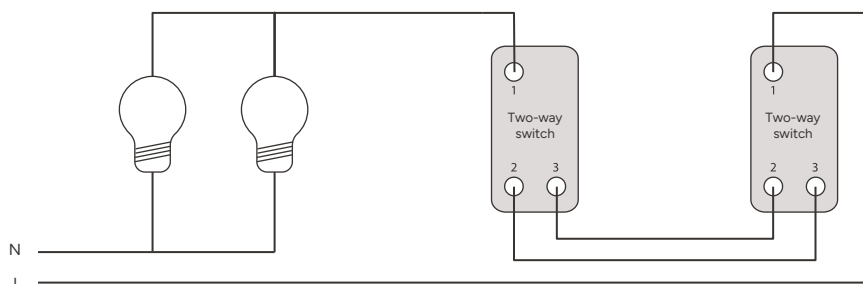
Avoid installing electrical fittings on wet plaster or paint. For best results, the wall surface around the back box should be fully finished and in excellent condition.

Connect the wiring as shown for each type of installation. When finished, there should be no exposed wire. The connections should be secure and tight. Earth sheathing should be used on any exposed earth wire. The switch assembly should push back into the back box without forcing or trapping any wires.

ONE-WAY WIRING DIAGRAM

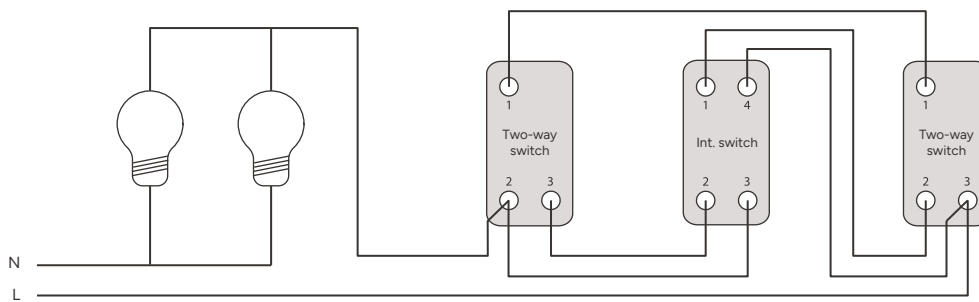
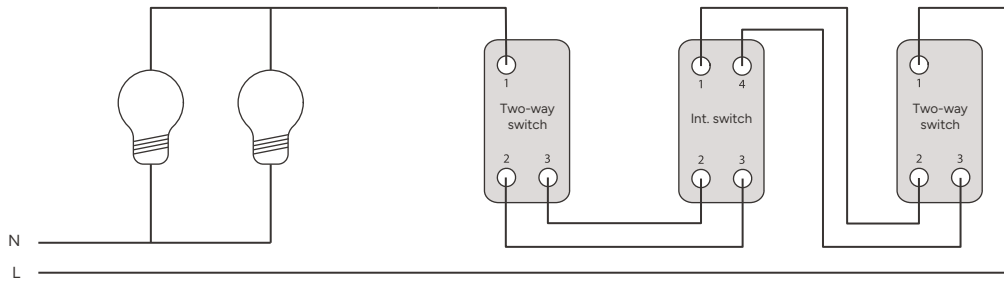


TWO-WAY WIRING DIAGRAMS

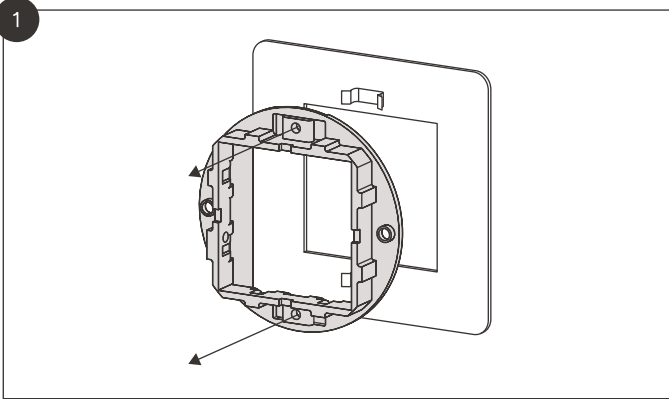


Example wiring

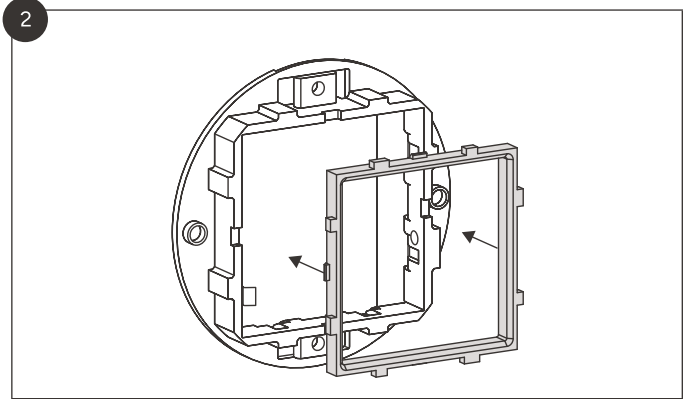
THREE-WAY WIRING DIAGRAMS



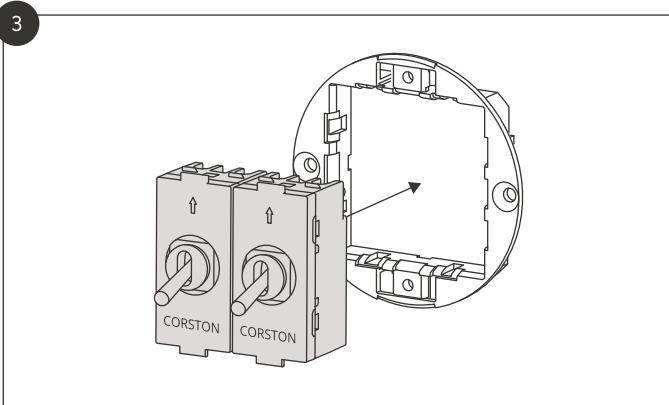
Installing Kew plates



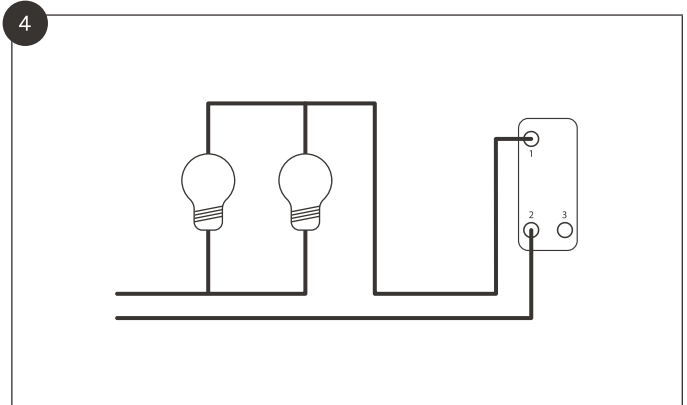
Unclip the chassis from the brass plate.



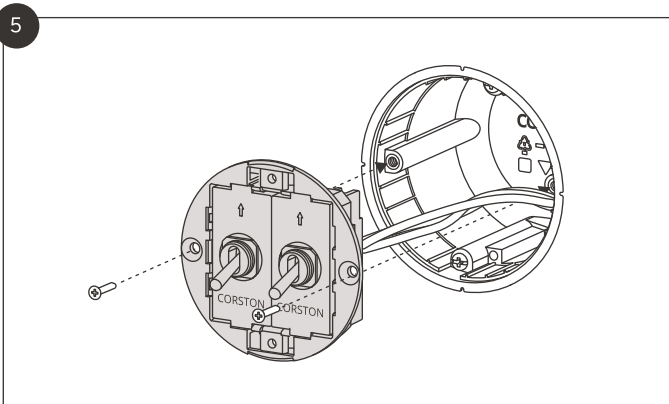
Socket modules only: clip the skeleton provided into the chassis.



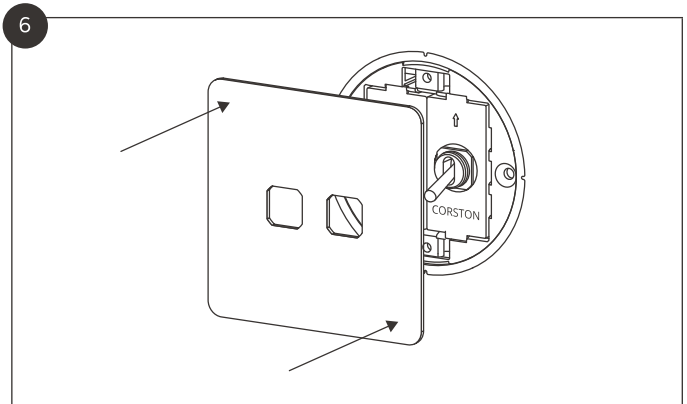
Push any modules into the chassis until they click.



Make all electrical connections to wire in the module.



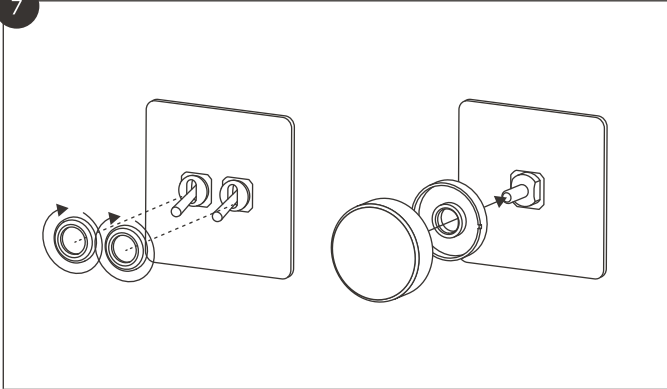
Screw the chassis into the back box.



Clip the brass plate onto the chassis.

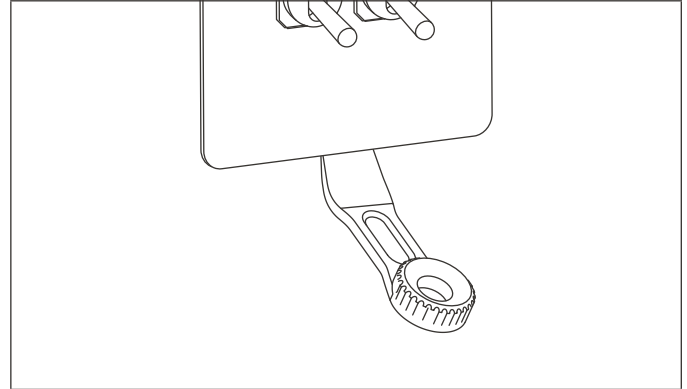
Installing Kew plates

7



Toggle and dimmer switches only: attach the toggle ring or dimmer knob as required.

REMOVAL

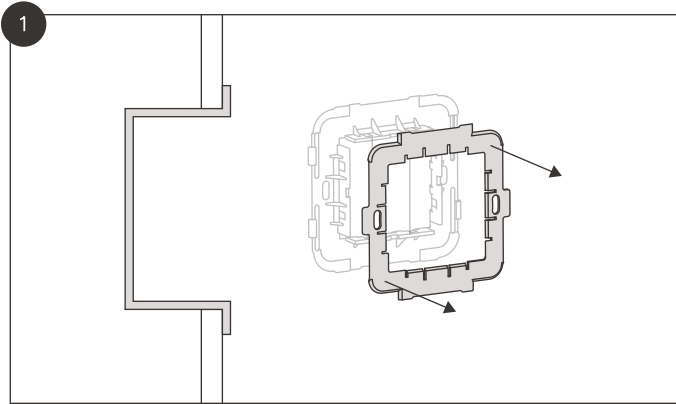


Take off any finishing components. To remove the plate, slide the removal tool under the edge and lever it until it comes away.

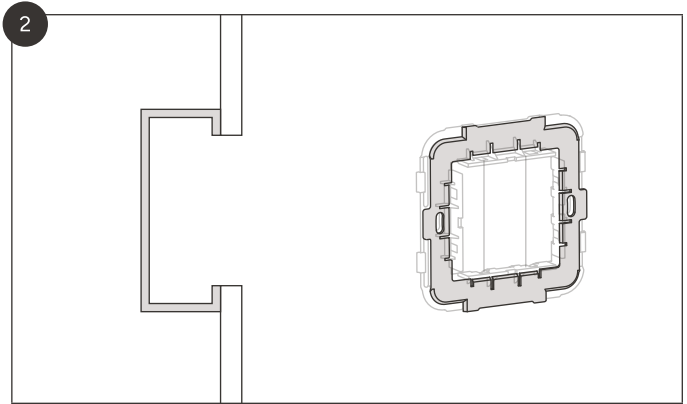
CARE GUIDANCE

Use a mild detergent and a damp cloth to maintain the solid brass, avoiding chemical cleaners. Touching the brass with another metal or hard object is likely to scratch and/or damage it.

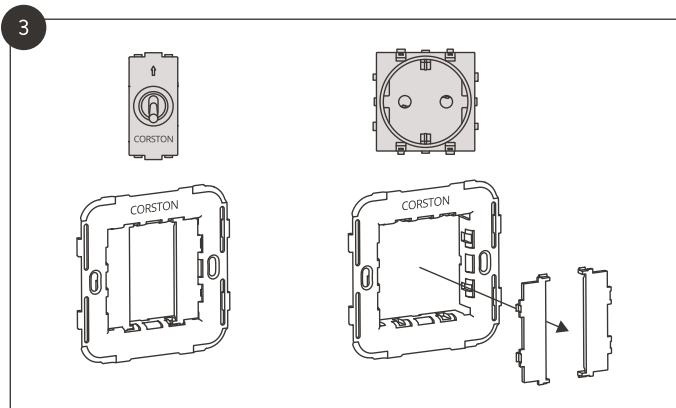
Installing Grove plates



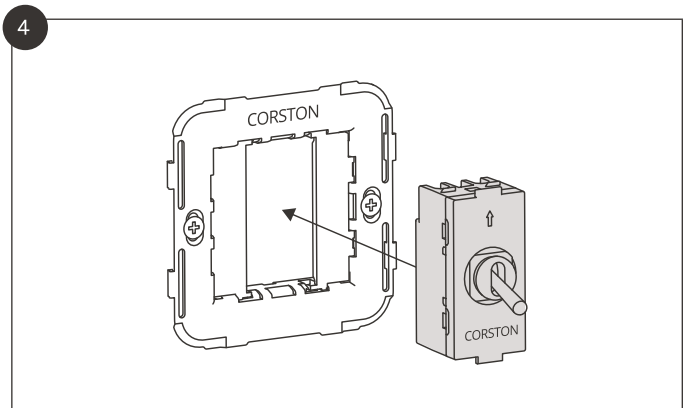
Surface-mounted back boxes: Remove the backing piece from the chassis.



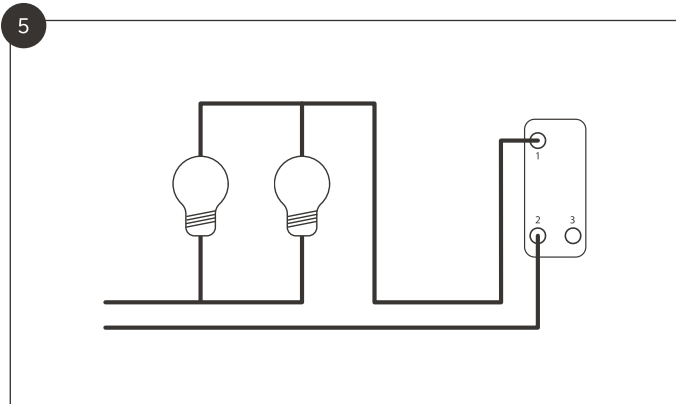
Recessed back boxes: Leave the backing piece in the chassis.



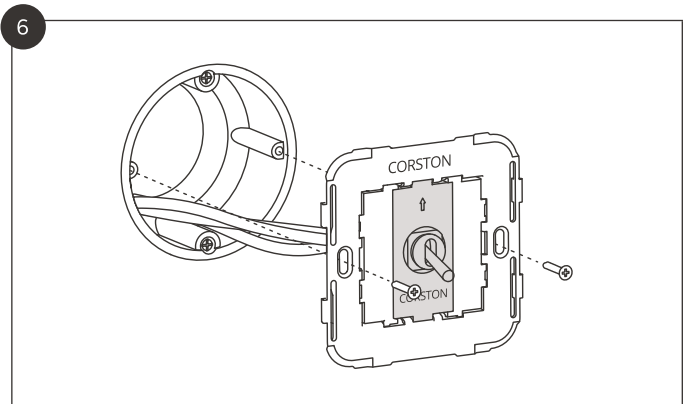
For toggle and keystone modules (excluding USB module), leave the side tabs in the chassis. For wider modules, snap them out.



Push any modules into the chassis until they click.

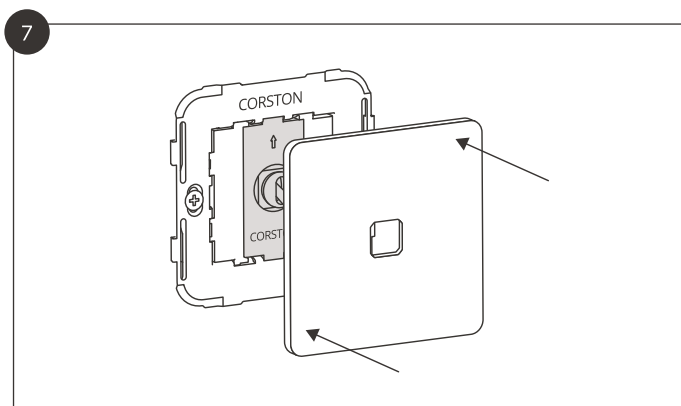


Make connections to wire in the module.

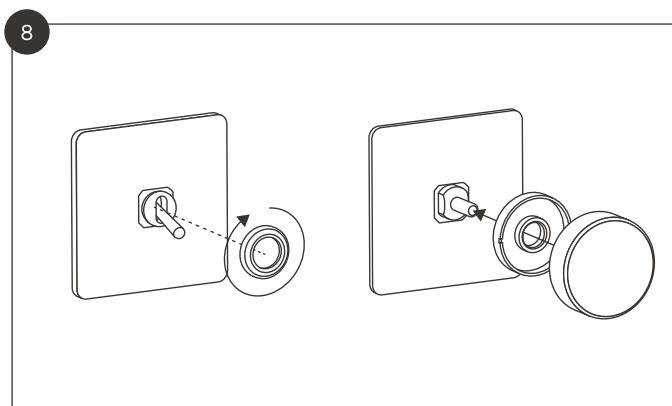


Fix the chassis onto the back box using the screws provided.

Installing Grove plates

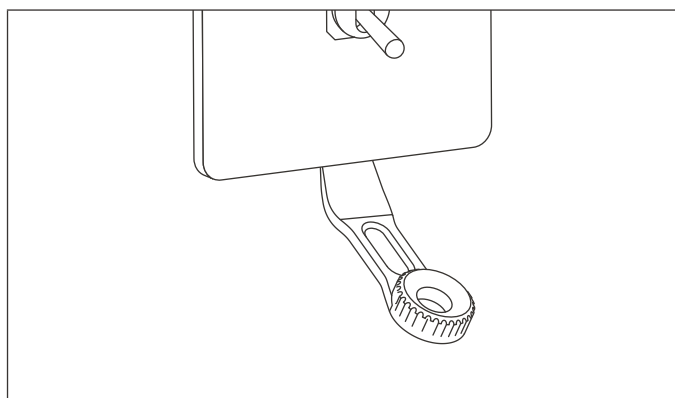


Clip the brass plate onto the chassis.



Toggle and dimmer switches only: attach the toggle ring or dimmer knob as required.

REMOVAL



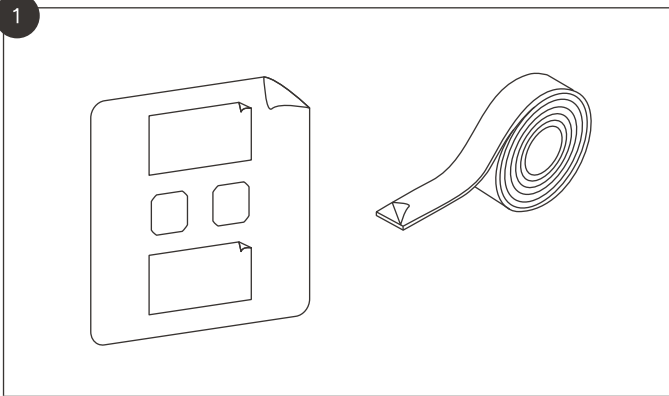
Take off any finishing components. To remove the plate, slide the removal tool under the edge and lever it until it comes away.

CARE GUIDANCE

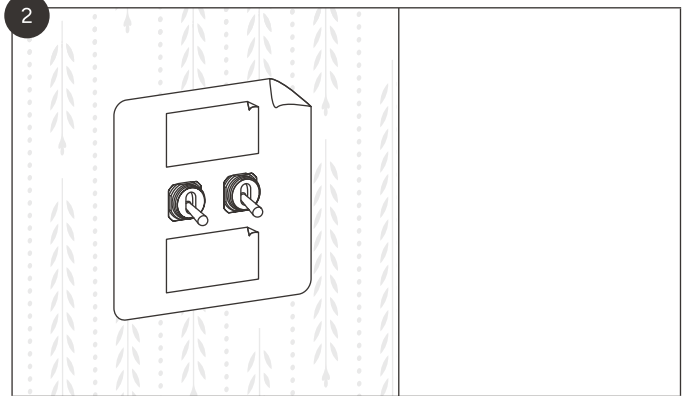
Use a mild detergent and a damp cloth to maintain the solid brass, avoiding chemical cleaners. Touching the brass with another metal or hard object is likely to scratch and/or damage it.

Using clear & paintable plates

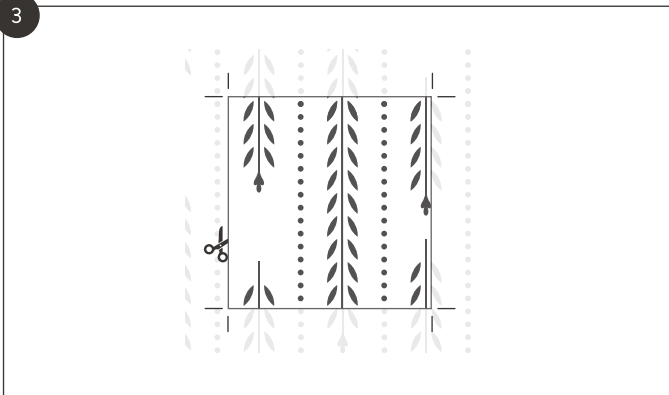
CLEAR PLATES



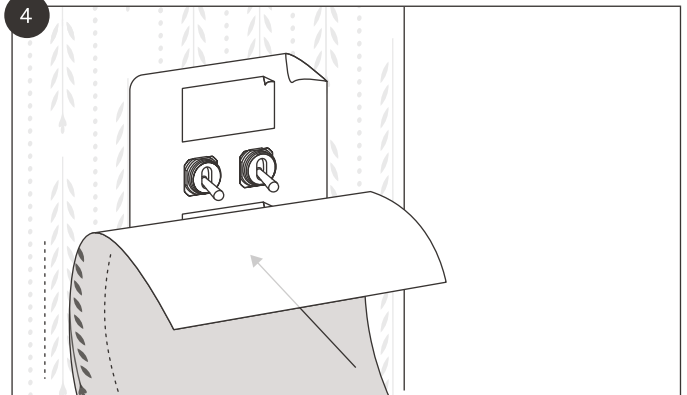
Apply double-sided tape to the paper template provided.



Place it over the switch or socket installed in the back box.



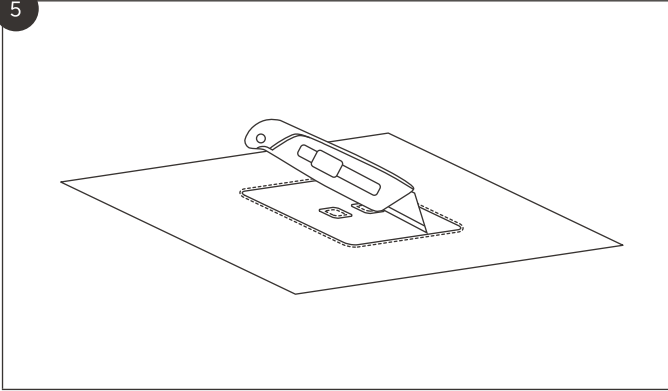
Cut out a section of wallpaper that perfectly aligns with the pattern around the switch or socket.



Carefully place the wallpaper section over part of the template, making sure it's perfectly aligned with the pattern around it. Make sure the template is stuck to the wallpaper section. Remove from the wall.

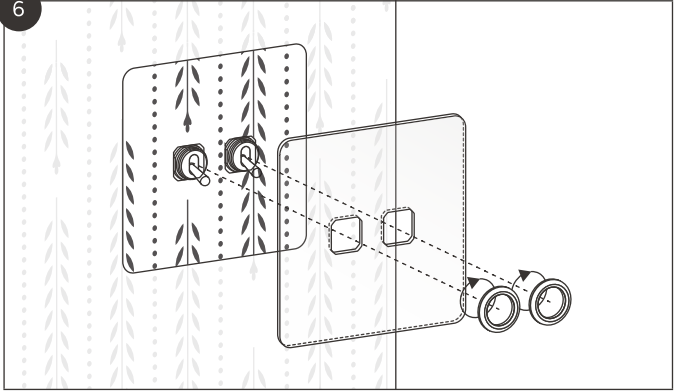
Using clear & paintable plates

5



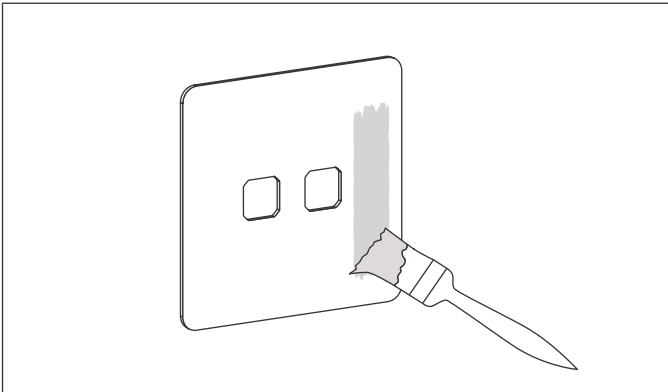
Cut carefully around the paper template, including all holes.

6



Place the template back on the wall, over the switch or socket, and then place the clear plate over the top. Finish with toggle ring(s) or a dimmer knob if applicable.

PAINTABLE PLATES



Paint the plate with interior paint before installing it.