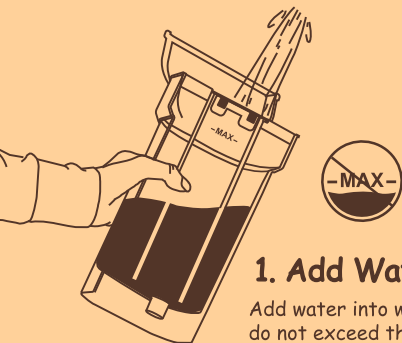


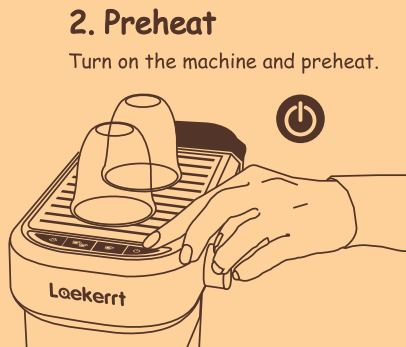


≡ Quick Start Guide ≡



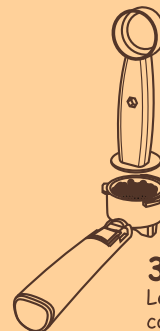
1. Add Water

Add water into water tank, do not exceed the Max line.



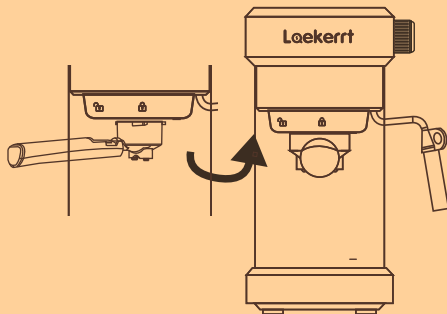
2. Preheat

Turn on the machine and preheat.



3. Load coffee

Load ground coffee and compress it.

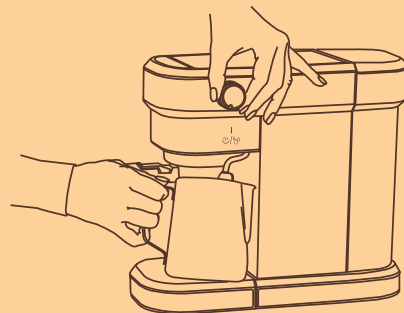


4. Install portafilter


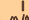


Install the portafilter and make sure the padlock's aligned.

5. Press espresso button

Press desired shot button and wait for coffee to drip.



Making Steam Milk Foam

1. Press  button.
2. Insert the steam nozzle.
3. Spin the steam knob to .
4. When done, twist the steam knob to  and press .