

RP5-GM32

Radio Replacement & Steering Wheel Control Interface
with OnStar Retention for General Motors Vehicles

Introduction & Features

The RP5-GM32 interface allows the replacement of a factory radio in select General Motors vehicles with 29-bit LAN radios. Using this interface will retain factory features such as OnStar, steering wheel controls (SWC), warning chimes, Rear Seat Controls (RSC) and the BOSE amplifier when the original radio is removed. Use of this interface also allows you to program two radio functions to each SWC button by using short press long press dual command functionality. The RP5-GM32 also provides data bus driven outputs such as retained accessory power (RAP), vehicle speed sensor (VSS), illumination, reverse trigger and parking brake.

Important Notes

1. These instructions only apply to R.2.6.6.17 or later revisions. The revision info can be found on a small white sticker on the interface and packaging.
2. The radio select rotary switch on the side of the interface must be adjusted to the proper radio setting before plugging the interface into the vehicle (see next page for setting chart).
3. The interface comes pre-programmed for all of the vehicles factory SWC functions and does not require programming unless you wish to re-assign the SWC functions or utilize short press long press dual command functionality. The SWC can always be restored to default settings by following the procedure outlined on page 3.
4. RSC buttons that are identical to the SWC will mimic the SWC one for one.
5. The LED will flash whenever a SWC button is pressed.

Wiring Connection Chart

Aftermarket Radio Connections

Yellow *	+12v from RP5
Yellow *	+12v from vehicle
Black **	Ground from RP5
Black **	Ground from vehicle
Red	Acc. Output
White	Front Left + input
White / Black	Front Left - input
Grey	Front Right + input
Grey / Black	Front Right - input
Green	Rear Left + input
Green / Black	Rear Left - input
Purple	Rear Right + input
Purple / Black	Rear Right - input

Light Green	Parking Brake Output (-)
Pink	Vehicle Speed Output
Orange / White	Illumination Output (+)
Purple / White	Reverse Output (+)
Brown Loop	Mute Loop - See Installation Step 7 on Page 2

SWC Connector

Blue / Yellow	Kenwood, Newer JVC, OEM or Blaupunkt
3.5mm Jack	Alpine, JVC, Clarion, Pioneer, Sony, Valor, Boyo, Dual, Lightning Audio, Visteon, Jensen or Advent

RCA Connector

Yellow	Reverse Camera 2
--------	------------------

RCA Connectors

Red	AUX Audio - Right
White	AUX Audio - Left
Yellow	Reverse Camera 1

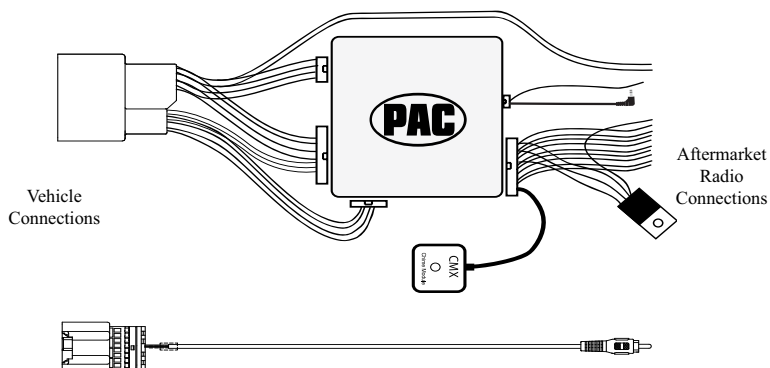
IMPORTANT NOTES REGARDING YELLOW AND BLACK WIRE CONNECTIONS

* Connect both Yellow wires from the RP5 harnesses to the radio's 12v constant input.

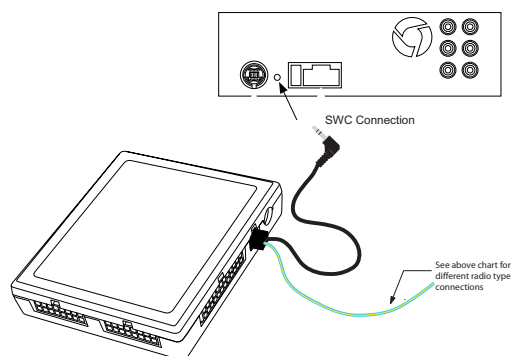
** Connect both Black wires from the RP5 harnesses to the radio's ground input.

Illustration / Schematic

Wiring



SWC Connection



Installation Steps



SET RADIO SELECT SWITCH

Alpine	JVC	Kenwood	Clarion	Pioneer/Other	Sony	Fusion
1	2	3	4	7	8	9

Other = Advent, BOYO, Dual, Lightning Audio, Visteon,

- The radio select rotary switch on the side of the interface must be adjusted to the proper radio setting before plugging the interface into the vehicle.**
- Make all connections as described in the chart on page 1. Be sure to connect both Yellow wires (one from vehicle harness and one from RP5 harness) and both Black wires (one from vehicle harness and one from RP5 harness) while making these connections.
- Factory installed amplifiers will determine the audio output connection. If the vehicle has a factory installed amplifier, use the factory amplifier audio location. If a factory installed amplifier is not present, use the non-amplified factory audio location.
- If the vehicle is equipped with a Premium BOSE system, connect the subwoofer and center channel RCA inputs to the aftermarket radio. If the aftermarket radio to be installed does not have a dedicated center channel or sub output, do not use this cable. To ensure best sound performance, channel summing is not recommended. Use this cable according to the outputs that are available.
- If the vehicle is equipped with a reverse camera and the aftermarket radio has a reverse camera input, connect the Yellow RCA plug on the Gray connector to the aftermarket radio's reverse camera input.
- Plug the CMX chime module in if necessary (If the vehicle chimes when the radio is removed the CMX is not necessary). **PLEASE NOTE:** In order to get the best possible sound out of the CMX please mount it in a place free and clear of any obstructions, preferably as close as possible to the bottom of the dash pointing down toward the floor of the vehicle.
- The Mute loop (if not cut) will turn the accessory output off when an OnStar or Bluetooth call is made or received. If the aftermarket radio has a mute input, cut this loop and connect the outer brown wire to the mute input.
- Connect the SWC wire according to the chart on page 1 (aftermarket radio MUST support a wired remote input).
- If you wish to reassign functions to the SWC follow the programming instructions in the next section.

Default Steering Wheel Control Programming

IMPORTANT! The interface comes pre-programmed for the functions listed in the chart below and does not require programming unless you wish to re-assign the SWC functions or utilize short press long press dual command functionality. The SWC can always be restored to default settings by pressing the program button on the side of the interface once and waiting for the timeout.

Default SWC Button Assignments

	Alpine	JVC	Kenwood	Clarion	Pioneer	Sony	Fusion
Volume +	Volume +	Volume +	Volume +	Volume +	Volume +	Volume +	Volume +
Volume -	Volume -	Volume -	Volume -	Volume -	Volume -	Volume -	Volume -
Source	Source	Source	Source	Source	Source	Source	Source
Track +	Track +	Track +	Track +	Search +	Track +	Track +	Track +
Track -	Track -	Track -	Track -	Search -	Track -	Track -	Track -
Voice	Mute	Mute	Mute	Mute	Mute	Mute	Mute
Play/Pause	Preset +	Preset/Disc -	Disc/FM+	Band	Preset +	Preset +	Audio

Optional Steering Wheel Control Programming

If you wish to re-assign the SWC functions, utilize short press long press dual command functionality or select between Factory/Aftermarket mode, the interface must be programmed in the specific order shown in the chart on page 3. If you come across a function in the chart that your steering wheel does not have, or you do not want to program, press and release the program button on the side of the interface to skip that function. The LED will flash off and on confirming that you have successfully skipped that function and are ready to proceed to the next one.



SET RADIO SELECT SWITCH

Alpine	JVC	Kenwood	Clarion	Pioneer/Other	Sony	Fusion
1	2	3	4	7	8	9

Other = Advent, BOYO, Dual, Lightning Audio, Visteon,



Optional Steering Wheel Control Programming (cont.)

The Mute button can be set to control the factory OnStar functions or given the ability to control the aftermarket radio. This option can be set using the program button on the side of the interface. The default setting for this button is factory mode which controls the factory OnStar. If this button is set to aftermarket mode, OnStar must be accessed by using the factory controls located on the rearview mirror.

Factory Mode

- The SWC Mute button is programmed to control OnStar. It cannot be programmed for short press/long press dual command functionality and is blocked from doing so.

Aftermarket Mode

- OnStar control through the SWC Mute button is disabled. This will free up the Mute button to send mute radio command and another 2nd function.

Use the function chart on the next page as a guide to program the functions in the proper order for your new radio.

- Turn the key to the ignition position.
- Press and release the programming button on the side of the interface the number of times that corresponds with either factory or aftermarket mode. One press will set factory mode, and two presses will set aftermarket mode. The LED will blink each time the button is pressed.
- Once you have chosen either factory or aftermarket mode, after 2.5 seconds the LED will come on solid. **At this point you have two options:**
 - To restore the SWC to factory default settings:** Simply wait 7 seconds and the LED will blink 3 times indicating the interface has timed out. The default settings are now restored and no further action is required.
 - To program custom SWC assignments:** Proceed to step 4
- With the LED on, press the first button to be learned on the steering wheel, the LED will turn off. **At this point you have two options:**
 - For short press functionality:** Release the button within 1.5 seconds. The LED will turn back on.
 - For long press functionality:** Hold the button until the LED starts blinking. Release the button and the LED will go back to solid.
- If you need to program more buttons, repeat step 3 for each additional audio function on the steering wheel.
- If you come across a function in the chart that your steering wheel does not have, or you do not want to program, press and release the program button on the side of the interface to skip that function.
- Once programming is completed, wait seven seconds. The LED will flash three times indicating end of programming.
- Test the interface for proper functionality. Whenever a SWC is pressed the LED on the interface should blink. If any function does not work, repeat the programming steps.

Optional Programming Order

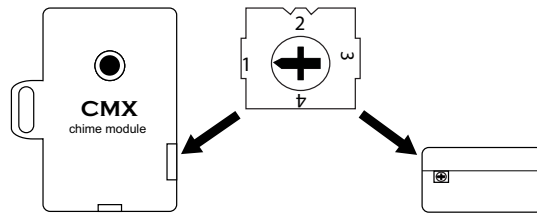
	Alpine	JVC	Kenwood	Clarion	Other*	Pioneer	Sony	Fusion
1	Volume +	Volume +	Volume +	Volume +	Volume +	Volume +	Volume +	Volume +
2	Volume -	Volume -	Volume -	Volume -	Volume -	Volume -	Volume -	Volume -
3	Mute	Mute	Mute	Mute	Mute	Mute	Mute	Mute
4	Preset +	Source	Source	Source	Preset +	Preset +	Preset +	Source
5	Preset -	Track +	Play	Search +	Preset -	Preset -	Preset -	Track +
6	Source	Track -	Track +	Search -	Source	Source	Source	Track -
7	Track +	Band/Disc +	Track -	Band	Track +	Track +	Track +	Audio
8	Track -	Preset/Disc -	Disc/FM +	Send/End	Track -	Track -	Track -	Power
9	Power	Select	Disc/AM -	Send	Band	Band	Band	
10	Enter/Play	Attenuation	Answer	End	N/A	Phone Menu	Reject Call/Source (Bluetooth equipped radios only)	
11	Band/Program	Phone Receive	Voice Dial			Answer Call	Answer/End Call	
12	Receive	Phone Reject	On Hook			End Call		
13	End	Voice Dial	Off Hook			VR		
14	VR	Power	Mute (Multimedia units only)					
15			Preset +					

*Other = Advent, Boyo, Dual, Lightning Audio, Rockford Fosgate, & Visteon



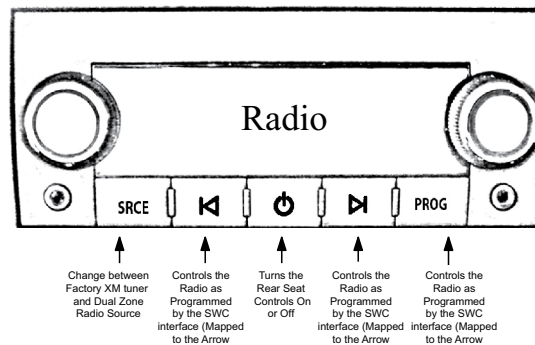
Testing and Verification

1. Turn the ignition on. The LED on the interface will turn on and the +12v accessory wire will turn on.
2. Turn on the radio and check balance and fade. Note: **Premium Factory amplified Systems** will not fade as neither the aftermarket radio or the RP interface have the ability to control the amplifier's fader.
3. Verify that the factory subwoofer (if present) is playing.
4. Verify that all SWC are functioning properly for both the aftermarket radio and OnStar. To adjust OnStar volume, press the OnStar button on the mirror then use the volume buttons on the SWC to adjust the level. The volume will raise a total of 8 times before returning to the original level.
5. Pressing the OnStar button on the rearview mirror will turn off the rear speakers and allow the OnStar audio to be heard in the two front speakers. The OnStar active LED will also turn on. When OnStar disconnects, the radio will un-mute or turn back on and the OnStar LED will turn off. Pressing the Mute/OnStar button on the steering wheel for 1.5 seconds will also activate Onstar.
6. Turn off vehicle and remove key. RAP will be active and keep the radio on for 10 minutes or until the drivers door is opened.
7. The LED and radio will turn off when RAP turns off, or the drivers door is opened.
8. Use the 4-position selector switch located on the side of the CMX module to select the best chime output volume for your specific installation. Setting 1 being loudest and 4 softest.



Using Rear Seat Audio Controls

Using the Radio's Dual Zone Source



1. Press the power button to turn the RSE Controls on. When Radio is displayed on the RSE Controls, the aftermarket radio's rear speaker output will be heard through the headphone jacks. Putting the aftermarket radio into dual zone mode should change the output level of the rear speakers to a fixed level. This allows precise user adjustment from the level knobs on the RSE Controls (refer to aftermarket radio owners manual for model specific dual zone operation).
2. The seek arrows and PROG button will control the radio as programmed by the SWC interface. These buttons are mapped to the SWC buttons as stated above.
3. Pressing the power button will turn the RSE Controls off as well as turning the key off. The seek arrows and PROG button will continue to operate as stated (with the exception of SRCE which has no function) when the Rear Seat Controls are turned off.

Rear Seat Entertainment (RSE); If equipped

1. Vehicles equipped with an overhead screen only:

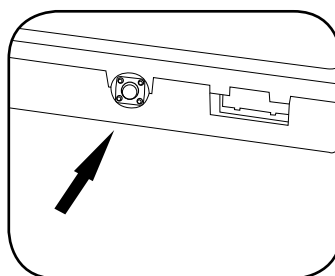
In this application the **GMRVD2** must be used in order to feed A/V into the factory screen from an aftermarket head unit (head unit must support A/V out). With the **GMRVD2**, A/V will be passed from the aftermarket head unit to the rear screen, and audio can be heard through the headphones. The **GMRVD2** will also pass the Auxiliary inputs on the rear of the center console to the aftermarket head unit.

2. Vehicles equipped with an overhead screen AND headrest monitors:

In this application the headrest monitors will function independently from the overhead monitor. Neither video or audio can be passed to or from the headrest monitors. The overhead monitor will function exactly as described in #1.

OnStar Volume Adjustment for Vehicles w/o SWC

1. If SWC buttons are not present you must use the programming button on the interface to control the OnStar audio level during an OnStar connection.
2. When OnStar is active pressing the programming button will raise the audio level 4 times before returning to the original level.



Press the programming button on the side of the interface while OnStar is active to adjust the OnStar volume

Technical Support and Product Updates (Firmware)

The RP5-GM32 can be updated with new firmware as it becomes available using the PAC-UP interface updater (sold separately). Please visit www.PAC-audio.com/firmware for available updates.

Technical Support
support@PAC-audio.com
866-931-8021

Overview

Symptom: The 12v+ accessory output drops out at high volume causing the aftermarket radio to shut down.

Cause: Aftermarket radios with high powered speaker outputs, played at high volumes, cause the interface's components to overheat, thus resulting in the 12v accessory output failure.

Solution: Wire 3 of the 4 factory speakers directly to the outputs of the aftermarket radio, bypassing the interface. You will need to leave the front left speaker wired through the interface in order to retain the OnStar functionality.

Disconnect the Speaker Wires

The RadioPRO5 Module has 2 harnesses:

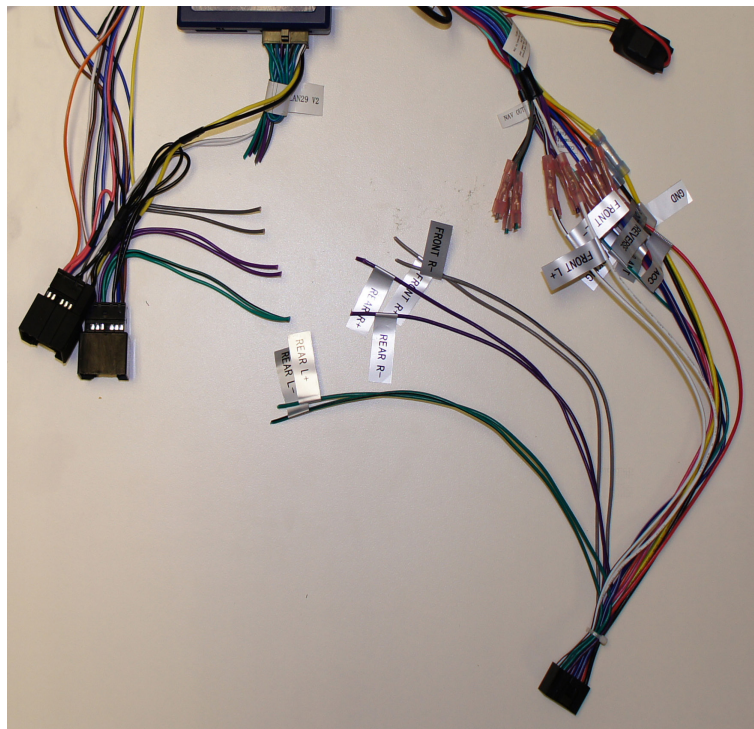
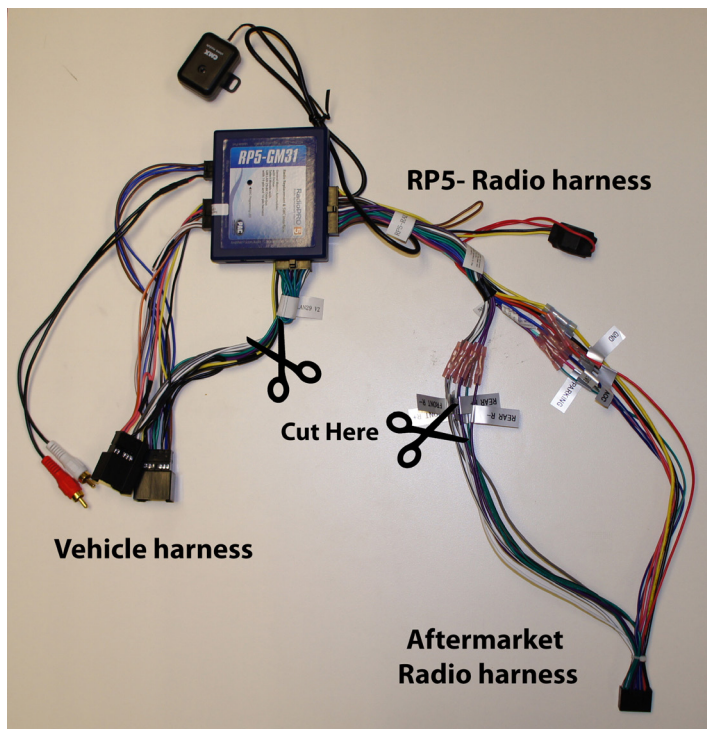
- a. RP5-Radio harness (RP5-RADPWRAUDIO)
- b. Vehicle harness (OS-GMLAN29)

1. Disconnect speaker wires from the Aftermarket Radio harness

- a. Cut the positive and negative speaker wires for the Left Rear, Right Rear and Right Front channels, away from the RP5-Radio harness.
- b. NOTE: The Left Front speaker wires must remain connected for OnStar audio.

2. Modify the Vehicle harness

- a. Cut the positive and negative speaker wires for the Left Rear, Right Rear and Right Front channels, away from the RP5 module.
- b. NOTE: The Left Front speaker wires must remain connected for OnStar audio.



Reconnect the Speaker Wires

1. Connect the 3 channels of speaker wires from the Aftermarket Radio harness to the speaker wires on the Vehicle harness, bypassing the RP5 module, as shown below.

