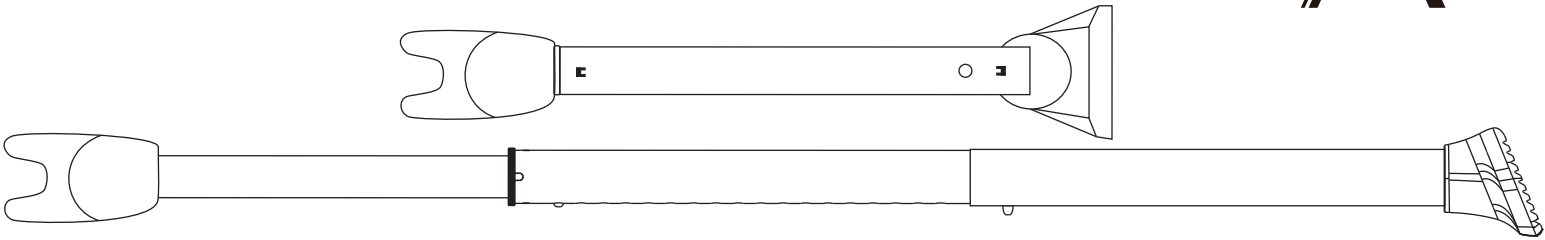


SECURITY BAR User Manual

Adjustable Door and Window Security Bar





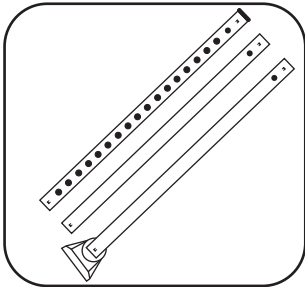
About us :

The founder of AceMining is a business person who travels frequently. When he travels, he is always worried about the safety and privacy of his family at home alone. To address this concern, he developed the portable door lock, which in turn spawned a line of home security products under AceMining, including Portable Door Locks, Door Reinforcement Locks, Door Stop Alarm, Door Security Bar, etc.

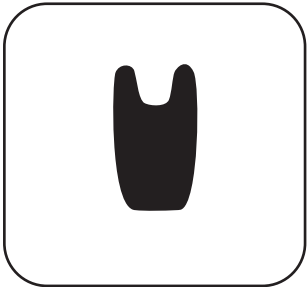
Introduction :

Additional SECURITY AND PRIVACY protection -This security bar provides you with extra security and privacy, greatly improving your security and preventing unauthorized entry, so the door can't be opened from the outside, not even with a key; Which is of great help for you when you are on business and trips or live alone. This dual - functional security bar is made from high - grade iron that can secure just about any hinged and / or sliding doors and windows. The security bar is fully adjustable with an angled rubber bottom that assures full contact and a strong grip on all types of floors without scratching them.

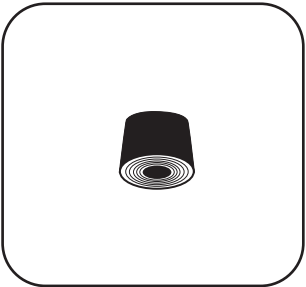
Contents :



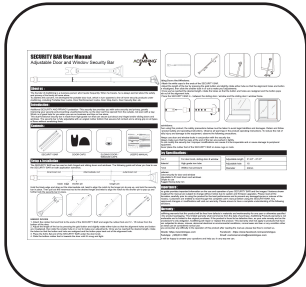
SECURITY BAR



DOOR CAP



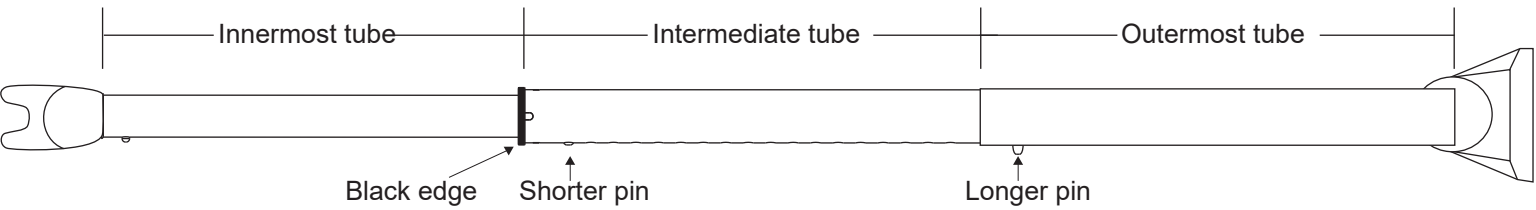
SLIDING DOOR / WINDOW CAP



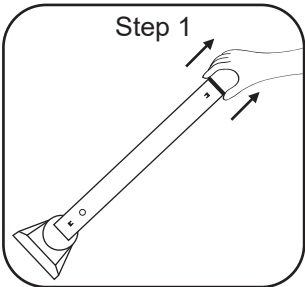
USER'S MANUAL

Setup & Installation :

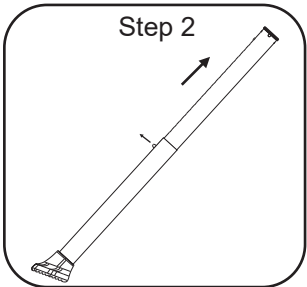
The SECURITY BAR can be used on both hinged and sliding doors and windows. The following guide will show you how to use the SECURITY BAR on both application scenarios.



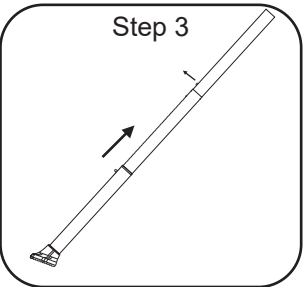
1. First hold the black edge and drag out the intermediate tube.
2. Twist to align the hole to the longer pin to pop up, and lock the security bar in place.
3. Then pull out the innermost tube to the desired length and twist to align the hole to the shorter pin to pop up and further lock the security bar in place.
4. Finally install the Y - type Door Cap.



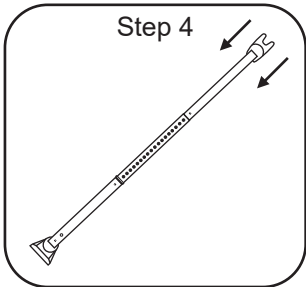
Step 1



Step 2



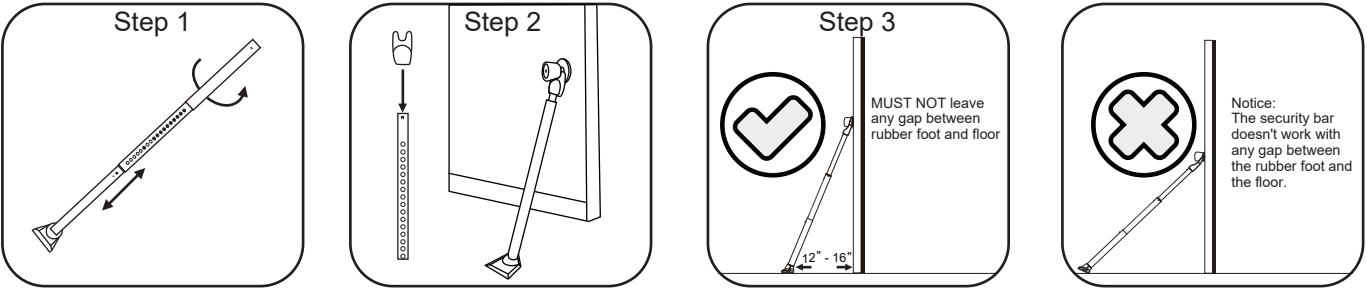
Step 3



Step 4

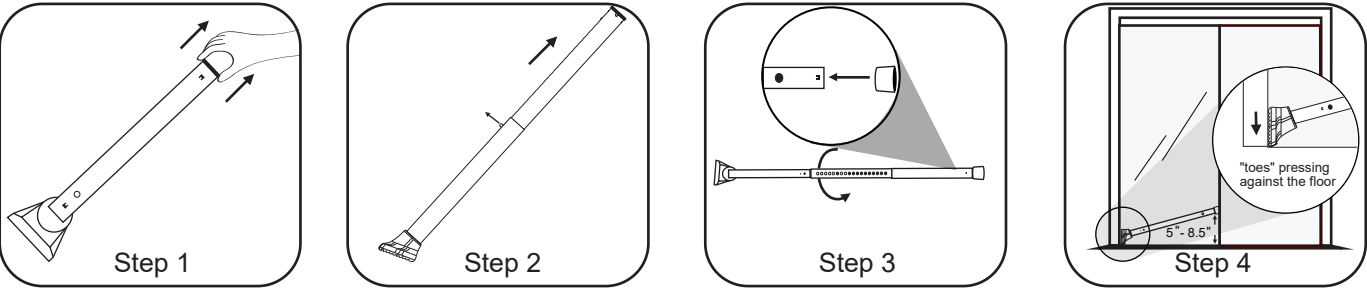
HINGED DOORS

1. Adjust the length of the bar by pressing the silver pin and slightly rotating the Intermediate tube so that the alignment hole and pin are misaligned, then slide the innermost tube in or out to make your adjustments. Reaching the desired length, rotate the tube so that the pin and hole are realigned and the pin pops back out of the alignment hole.
2. Attach the Y - type Door Cap to the top of the SECURITY BAR, Place the Y - type Door Cap on top of the SECURITY BAR under the door knob.
3. Keep the rubber foot within 12 - 16 inches from the bottom of the door, then Slide the bottom rubber foot towards the door until it's snug and tight with no gap between the rubber foot and the floor.



SLIDING DOORS AND WINDOWS

1. First hold the black edge and drag out the intermediate tube.
2. Adjust the length of the bar by pressing the silver pin and slightly rotate the intermediate tube so that the alignment hole and pin are misaligned, then slide the innermost tube in or out to make your adjustments.
3. Once you've reached the desired length, rotate the tube so that the pin and hole are realigned and the pin pops back out of the alignment hole, then attach the white cap to the top of the SECURITY BAR.
4. Place the security bar in-between the sliding door/window with the bottom rubber "toes" pressing against the floor / windowsill.



Restrictions:

When using this product, the safety precautions below must be taken to avoid legal liabilities and damages. Retain and follow all product safety and operating instructions. Observe all warnings in the product operating instructions. To reduce the risk of bodily injury and damage to the equipment, observe the following precautions.

- Always use door and window locks in conjunction with the security bar.
- Always make sure that the caps at the end of the bar are pushed in tightly.
- Do not modify the security bar. Improper modifications can cause it to be inoperable and or cause damage to peripheral equipment.
- Never place the rubber foot of the SECURITY BAR on loose rugs or mats.

Key Specifications :

2-in-1	For door knob, sliding door & window
Material	High grade iron tube
Force	350lbs max pressure

Adjustable length	21" - 47"
Weight	2.6 lb
Max diameter	40 mm

Features:

- Extra security for door and window.
- Adjustable to fit most doors and windows.
- Simple to use.
- Rugged heavy - duty iron.

Warranty :

AceMining warrants that this product will be free from defects in materials and workmanship for one year or otherwise specified on the product packaging. This limited warranty shall commence from the date of purchase. AceMining Products warranty is not transferable and is limited to the original purchaser. If the product is found to be defective then, as your sole remedy and as the manufacturer's only obligation, AceMining will repair or replace the product. This warranty shall not apply to products that have been subjected to abuse, misuse, abnormal electrical or environmental conditions, normal wear and tear or any condition other than what can be considered normal use. If you encounter any difficulty in the operation of this product after reading the manual, please feel free to contact us.

Website: <https://aceminingus.com>
WhatsApp: (484)314-1908

Facebook: <https://www.facebook.com/aceminingus>
Email: customerservice@aceminingus.com

We will be happy to answer your questions and help you in any way we can.