

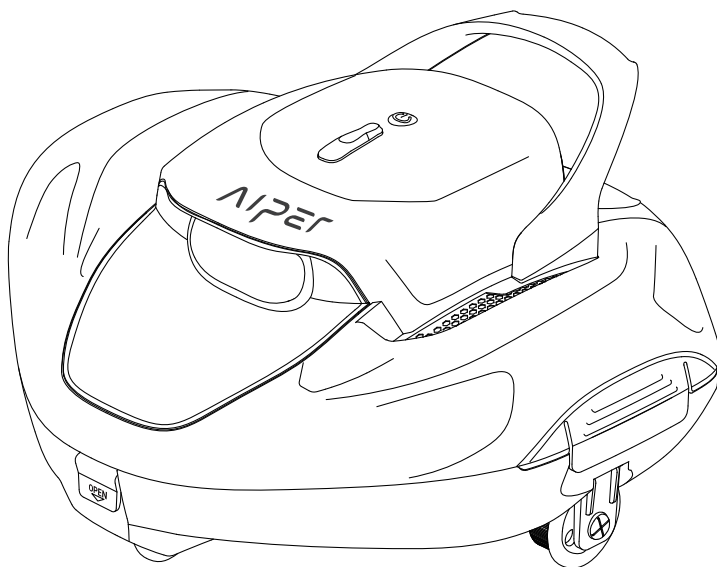
EN

AIPEE[®]

ROBOTIC POOL CLEANER

User Manual

Aiper Seagull 800B



Thank you for choosing Aiper.

You've now joined a family of millions who have already put their trust in Aiper to take care of their pools and are enjoying the convenience of a pristinely clean pool.

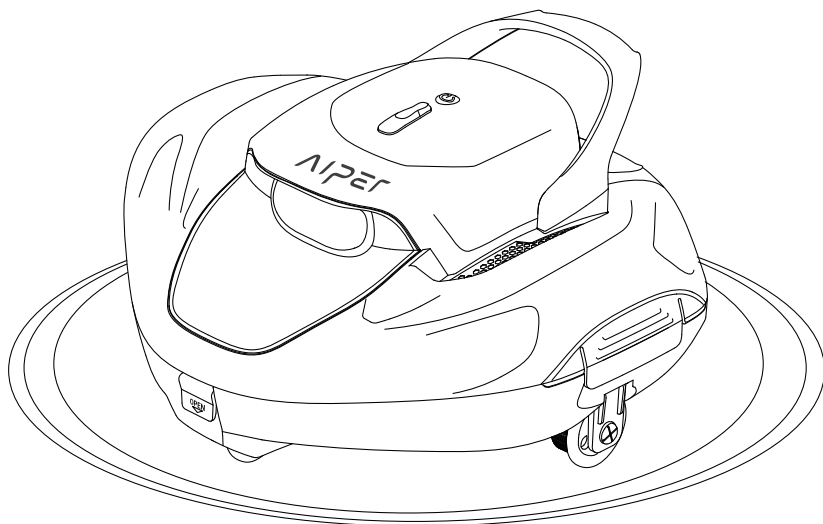
This user manual will help you maintain your Aiper pool cleaner and ensure it performs at its maximum efficiency for years to come. Please take a few minutes to read through this manual.

If you have any questions, please visit our website at www.Aiper.com and contact our customer service team for assistance or more information.

Aiper Customer Service:

Email: service@aiper.com

Facebook: [@AiperOfficial](https://www.facebook.com/AiperOfficial)



CONTENTS

Important Safety Precautions ----- 1

1. Introduction ----- 2

2. Structure ----- 2

3. Specifications & Working Conditions ----- 3

4. Use The Pool Cleaner ----- 4

5. Clean The Filter Tray ----- 8

6. Maintenance & Storage----- 9

7. Light Indicator ----- 13

8. Packing List ----- 13

9. Warranty ----- 14

Important Safety Precautions

Read the manual carefully, and use the cleaner according to the manual. We are not liable for any losses or injuries caused by improper use.

Please strictly follow the instructions below:

1. Do not operate the cleaner when people or animals are in the pool.
2. Turn off the cleaner when maintaining, cleaning or when it is not in use.
3. Do not allow children to ride on the cleaner, or play with it without supervision or instruction.
4. Use the original and authorized power adapter only.
5. The adapter cord should only be replaced by a qualified electrician.
6. The charging adapter must be connected to a leakage protected and earthed socket when charging.
7. Make sure the charging socket is dried before charging.
8. While charging, the cleaner should be kept in a cool place, and not covered with anything to prevent the damage of internal electrical components by overheating.
9. Do not run the cleaner when it is out of water, as it may damage the cleaner by overheating.
10. Only certified professionals can disassemble the sealed driving kit of the cleaner.
11. Do not operate the cleaner while pool filter is running.
12. Oil sealing for motor contains grease, which may cause water pollution if grease leaks.
13. Do not use or store the cleaner near any heat source.
14. Do not pierce the shell of the cleaner with nails or other sharp objects. Do not hammer, impact, or throw the cleaner.

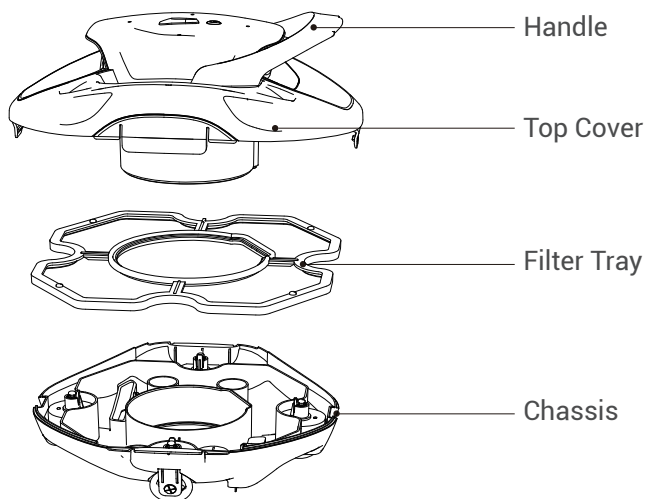
KEEP THESE PRECAUTIONS

1. Introduction

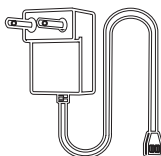
This environment-friendly robotic pool cleaner Seagull 800B is a new type of rechargeable automatic cleaner that filters the pool water without replacing the pool water.

Please read this user manual carefully before using it.

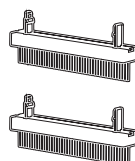
2. Structure



Retrieving Hook



Charger



Brushes

3. Specifications & Working Conditions

1. Pool Size: 850sq.ft/80m², flat floor only

2. Charger Input: 100~240V, 50/60Hz

3. Charger Output: 12.6V/1.8A

4. Charging Time: 2.5 Hours

5. Run Time: up to 90 Minutes

6. IP Grade: IPX8 Waterproof

7. Max Water Depth: 10ft (3m)

CAUTION:

Use the cleaner in the water conditions below:

- Temperature: 50-95°F (10-35°C)

- pH Value: 7.0-7.4

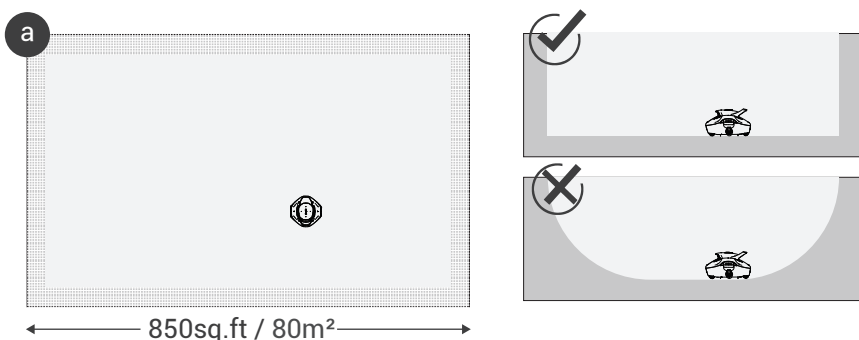
- Chlorine: Maximum 4 ppm

- NaCl: Maximum 5000 ppm

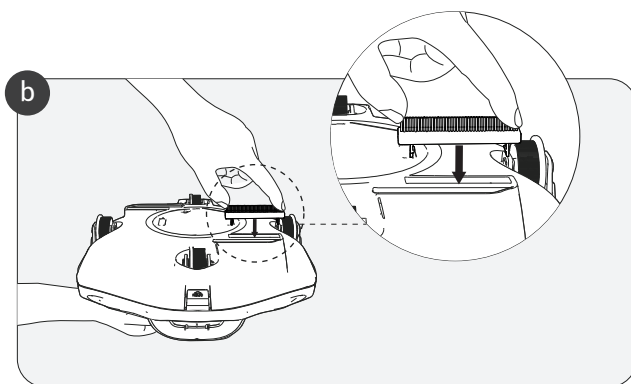
4. Use The Pool Cleaner

4.1 Important Precautions

A. This model only applies to swimming pools with a flat floor with no slopes, up to 850sq.ft/80m².

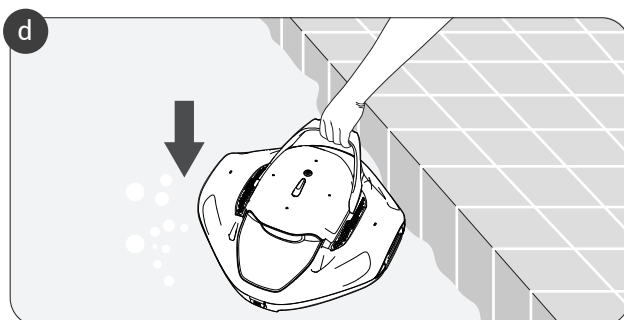


B. Insert the included 2 brushes tightly to the bottom slots of the cleaner and you will hear a click sound.



C. Power off the cleaner after use.

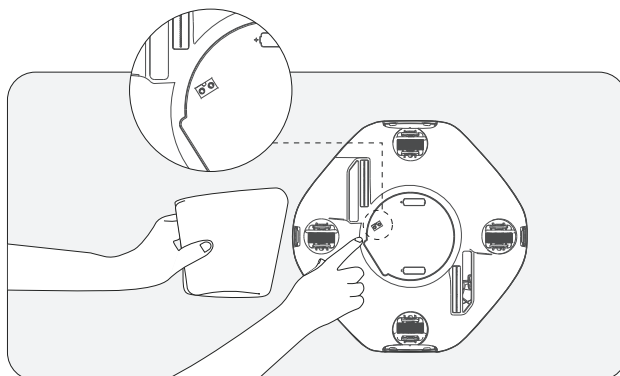
- D. Put into or lift out of the pool with the cleaner bottom towards the wall to avoid any possible scratches to the pool or the machine.



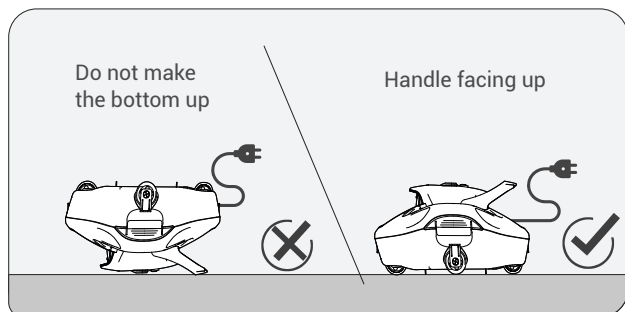
4.2 Charging

Fully charge the cleaner before cleaning your pool.

- Power off the cleaner before charging.
- Clean and dry the charging port before charging.



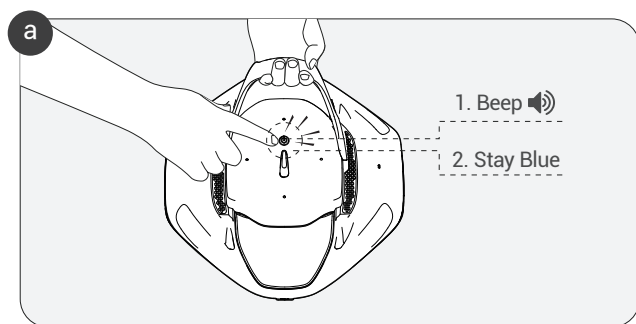
- When charging, do not make the bottom up to prevent the handle from being crushed.



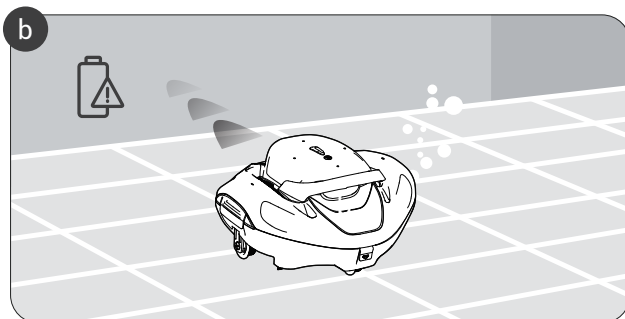
- Blue light flashing slowly indicates the battery is charging.
- Blue light staying ON indicates that charging is completed.

4.3 Working

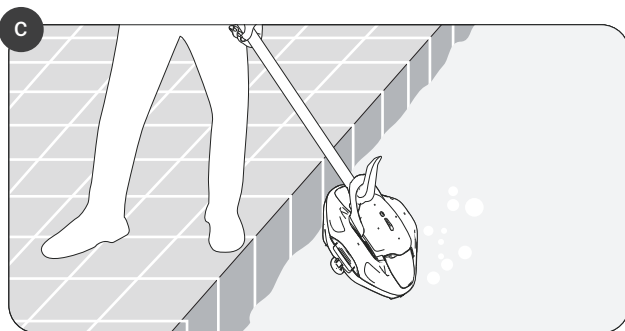
- Press and hold the power button till the blue light stays ON with a beep. Drop the cleaner into the water in 30 seconds. The cleaner will work after 5 seconds, with the white light staying ON.



- b. When the battery is low, the red light flashes slowly and automatically stops alongside the pool wall. The red light will flash for 60 seconds and power OFF, to be retrieved back.

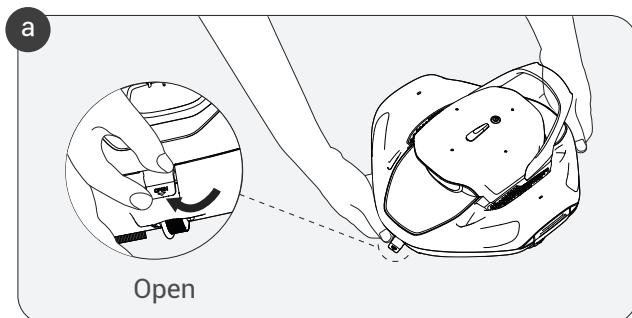


- c. Attach the included hook to your pool pole and hook up the handle of the cleaner to lift it out of the water.

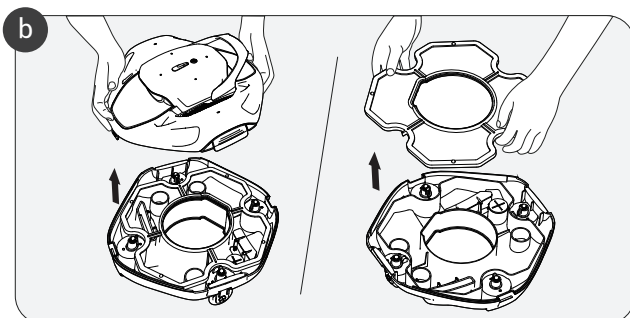


5. Clean The Filter Tray

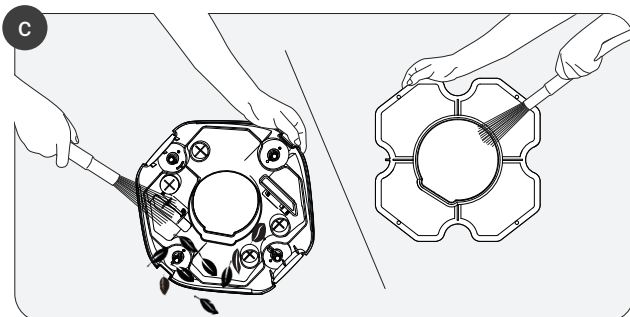
- a. Open the two small buckles in the front and back of the machine, then slightly open the two big buckles at the sides of the machine.



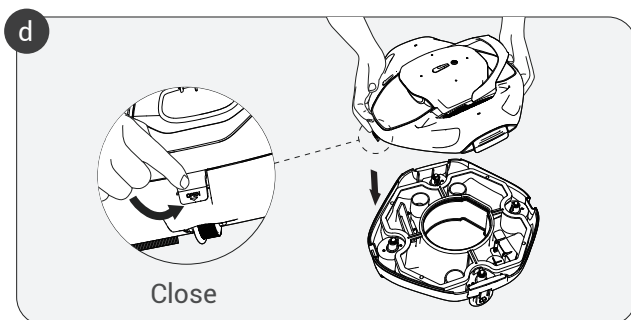
- b. Take off the top cover of the machine and take the filter tray out.



- c. Dump the dirt and debris in the bottom shell. Wash the shell and filter tray with water.

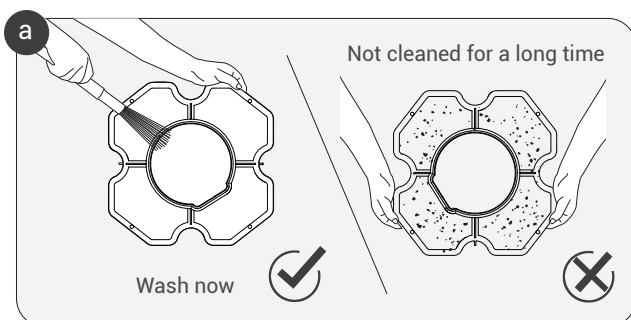


- d. After all is cleaned, put the filter tray back and lock the top cover with buckles.



6. Maintenance & Storage

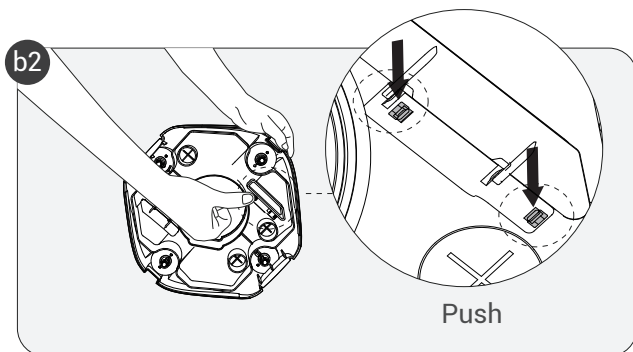
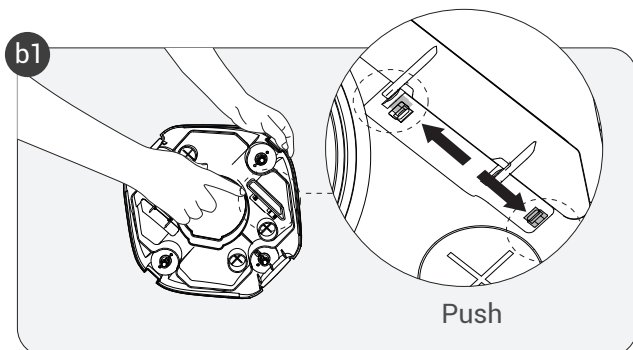
- a. Always wash the filter tray IMMEDIATELY after use. The filter tray will be blocked by dried debris and hard to remove if it's not washed in time.



b. Replace a Brush:

If a brush is worn out, please take the brush off with the steps below.

- 1) Take off the top cover of the machine and find the brush position;
- 2) Use your finger or a small tool to push the two small locking bars aside, as the arrows show below;

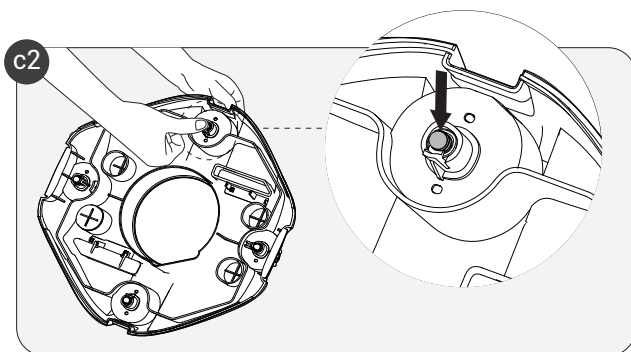
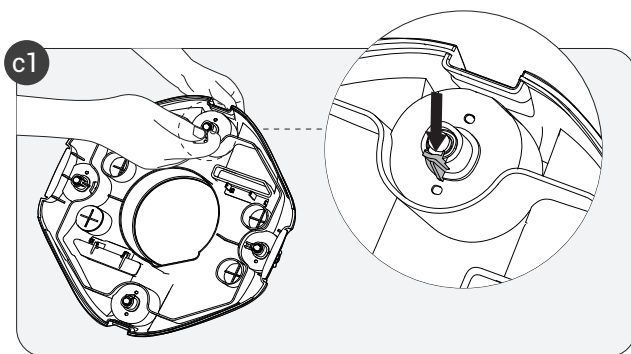


- 3) Press the two locking bars down and get the brush out;
- 4) Insert your new brush (not included) to the bottom slot of the cleaner.

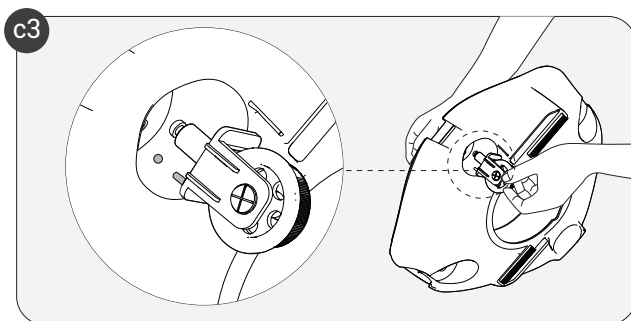
c. Replace a Wheel:

If a wheel breaks, please see the steps below for replacing it.

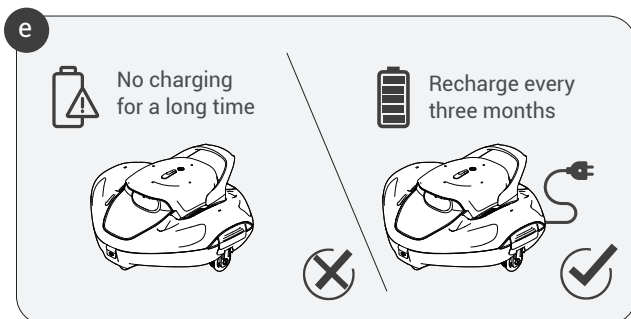
- 1) Take off the top cover of the machine and find the broken wheel position;
- 2) Use your finger or a small tool to push the wheel buckle till it bends a little and push down the top of the black wheel stem and keep the white wheel stem catch part, as the arrows show below;



- 3) Insert the included new spare wheels to the white wheel stem catch, and align it with either of the two small holes of the wheel position; lock it up and you will hear a click sound.



- d. The cleaner should be stored in a cool and ventilated place, away from direct sunshine.
- e. If the cleaner needs to be stored for a long period of time, it should be charged every three months to maintain battery life between 40%-60%. Please use the original and authorized power adapter only. If the cleaner is not charged for a long time, the battery voltage will be lower than the over-discharge protection voltage due to the self-discharge of the battery, which may cause fatal damage.



7. Light Indicator

NO.	Working Status	Light Indicator
1	Power ON/Battery Level	Blue light stays on/Blue light numbers
2	Power OFF	Lights OFF
3	Working (Motors Running)	White light stays on
4	Charging	Blue light flashes slowly
5	Charging Completed	Blue light stays on
6	Low Battery Warning	Red light flashes slowly
7	Impeller Blocked	Red and green lights flash in turn
8	Water Immersed	Red and blue lights flash in turn
9	Power Failure	Blue light flashes fast

8. Packing List

NO.	Name	Model	QTY(pc)
1	Cleaner	Seagull 800B	1
2	Charger		1
3	Retrieval Hook		1
4	User Manual		1
5	Brushes		2
6	Spare Wheels		2

9. Warranty

This product has passed all quality control and safety tests, conducted by the technical department of the factory.

1. This product comes with a warranty that covers your item's battery and motor from the date of purchase. The respective country's legal provisions for warranty conditions shall apply accordingly.
2. This warranty is voided if the product has been altered, misused, or has been repaired by unauthorized personnels.
3. The warranty extends only to manufacturing defects and does not cover any damage resulting from mishandling of the product by the owner.
4. The order number or record must be presented for any claim or repair during the warranty period.



Declaration of Conformity (CE)

The EU declaration of conformity can be requested via the address below:

AIPER INTELLIGENT SARL

24 Avenue du Prado 13006 Marseille 6e Arrondissement, France

AIPEP®

www.aiper.com