

INSTRUCTION MANUAL

TOASTER



MODEL 300006KHK

PLEASE READ THE MANUAL CAREFULLY BEFORE OPERATING
YOUR PRODUCT AND RETAIN IT FOR FUTURE USE

IMPORTANT SAFEGUARDS

When using electrical appliances, basic safety precautions should always be followed including the followings:

1. Read all instructions.
2. Make sure that your outlet voltage corresponds to the voltage stated on the rating label of the toaster.
3. Do not touch hot surface. Use handles or knobs only.
4. To protect against electrical shock, do not immerse cord, plug, or any part of the toaster in water or other liquid.
5. Close supervision is necessary when it is used by or near children.
6. Unplug unit from outlet when not in use and before cleaning. When unplug, always hold the plug but never pull the cord.
7. Do not operate any appliance with a damaged cord or plug, or in abnormal state. If its main cord is damaged, it must be replaced by the manufacturer , the nearest service agent or a qualified person.
8. Do not let the cord hang over edge of table or counter, or touch hot surface.
9. Do not place the appliance on or near a

hot gas or electric burner, or in a heated oven.

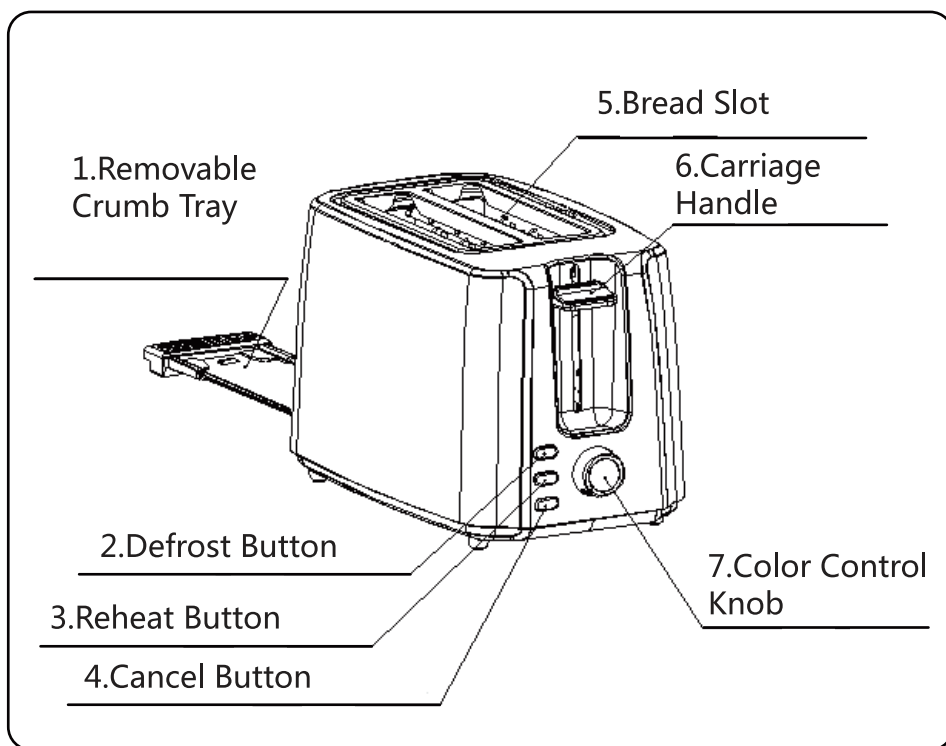
10. Do not use the appliance for other than its intended use.
11. Oversize food, metal foil packages or utensils must not be inserted in the toaster as they may cause fire or electric shock.
12. Bread may burn, so the toaster must not be used near or below curtains and other combustible materials, and must be watched.
13. The use of accessory attachments not recommended by the appliance manufacturer may cause injuries.
14. Don't attempt to dislodge food when toaster is in operation.
15. Be sure to take the bread out carefully after toasting so as to avoid injuries.
16. This appliance can be used by children aged from 8 years and above and persons with reduced physical, sensory or mental capabilities or lack of experience and knowledge if they have been given supervision or instruction concerning use of the appliance in a safe way and understand the hazards involved. Children shall not play with the appliance. Cleaning and user

maintenance shall not be made by children unless they are older than 8 and supervised.

17. Keep the appliance and its cord out of reach of children less than 8 years.
18. Warning: if toast of small bread slices less than 85mm length, you must pay attention to the potential risk of burning when taking out the slices.
19. The appliance is not intended to be operated by means of an external timer or separate remote-control system.
20. Don' t use the appliance outdoors.
21. This appliance is intended to be used in household and similar applications such as:
 - Staff kitchen areas in shops, offices and other working environments;
 - Farm houses;
 - By clients in hotels, motels and other residential type environments;
 - Bed and breakfast type environments.
22. Save these instructions.

SPECIFICATION

Model No.	300006JRL
Voltage	220-240V ~
Frequency	50-60Hz
Power	750W

PRODUCT STRUCTURE DIAGRAM**BEFORE FIRST USE**

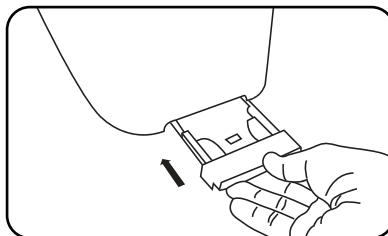
Remove all protective wrappings prior to toasting.

There may be manufacturing residue or oil remained in the toaster or heat element, usually it will emit the odor for the first use. It is normal and will not occur after several times use. When use the toaster for the first time, it is suggested to operate according to the below steps but without bread, so as to burn the residue and oil remained. Then let the toaster cool down and begin toasting the first slice.

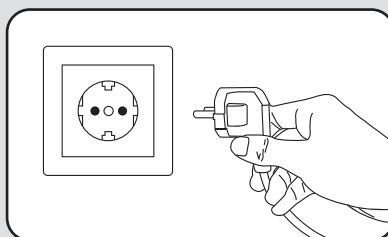
USING YOUR TOASTER

1. Put bread slice into the bread slot which can be inserted two slices at most every time. Only the regular slice can be placed into the bread slot.

NOTE: Make sure the crumb tray is completely positioned in place before using.



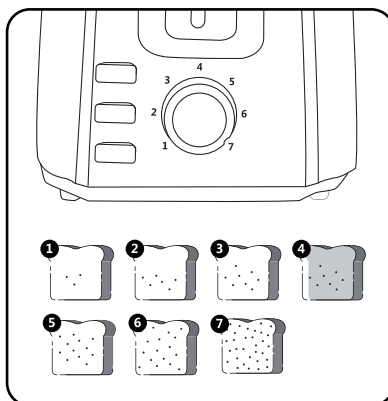
2. Plug the power cord into the outlet.



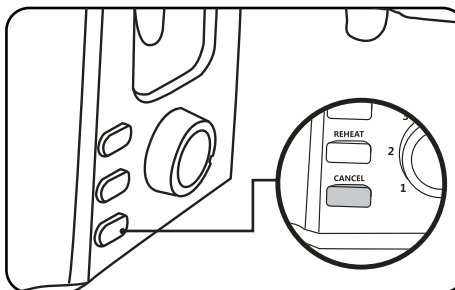
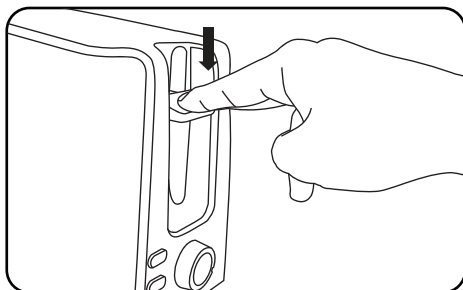
3. Set color control knob to your desired color. There is 7-position level, the lowest "1" is for light and the highest "7" is for dark. The bread slice can be toasted to golden color at the middle position.

NOTE: 1). Toasting color for one slice is darker than that for two bread slices at the same level.

2). If toasting continuously, toasting color for the latter bread is darker than the anterior bread at the same level.



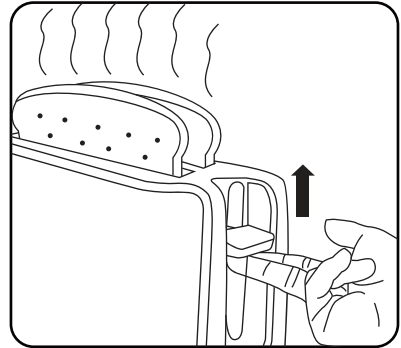
4. Lower carriage handle down vertically until it is latched in place, the indicator of Cancel will be illuminated, and the appliance will begin toasting at once.



NOTE: The carriage handle can only be latched when the appliance is plugged in.

- Once the bread has been toasted to the preset color, the carriage handle will automatically pop up. Also you can uplift the carriage handle a little to remove the bread readily.

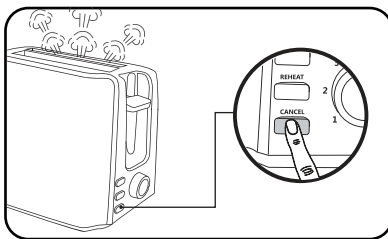
NOTE: During toasting, you may also observe the toasting color. If it is satisfactory, you can press the Cancel button to cancel the operation at any time, but never lift carriage handle to cancel toasting.



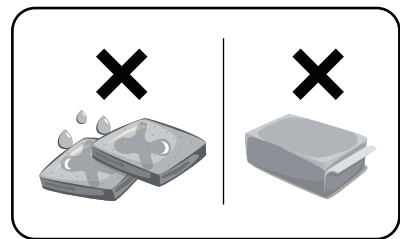
- If you want to toast frozen bread, firstly lower carriage handle down vertically until it is latched in place, then press Defrost button and the indicator of Defrost button will be illuminated, set color control knob to your desired color. In this mode bread will be toasted to your desired color.
- If you want to reheat cold toasted bread, firstly lower carriage handle vertically until it is latched in place, then press the Reheat button and the indicator of Reheat button will be illuminated. In this mode toasting time is fixed, so long as time runs over, the carriage handle will automatically pop up and end up the reheating process.

CAUTION

- If toaster starts to smoke, press Cancel to stop toasting immediately.



- Avoid toasting the food with extremely runny ingredients such as butter.



- Never attempt to remove bread jammed in the slots without unplugging the toaster from the electrical outlet first. Be sure not to damage the internal mechanism or heating elements when removing bread.
- The bread slot is only applicable for toasting regular bread slice.
- In order to achieve uniform color, we recommend that you should wait at least 30s between each toasting so that the color control can reset automatically.



AIGOSTAR INTERNATIONAL LIMITED
UNIT 4 TEES VALLEY COURT GLENARM ROAD
WYNYARD TS22 5FE GB
GB311003583

[HTTP://WWW.AIGOSTAR.COM](http://www.aigostar.com)

MADE IN P.R.C