

Ruko[®]

3+
for age

User Manual

v2.0



6088



+1(888)892-0155 | Mon-Fri 7:00AM - 7:00PM (PST)



rukotoy.com



CONTACT US FOR MORE TECH SUPPORT



+1(888)892-0155

| Mon-Fri 7:00AM - 7:00PM (PST)



+1 (732) 207-0697



rukodrone@gmail.com



Content

1 Preparation Before Use	1
1.1 Ruko Romo APP Download Methods	1
1.2 Remote Control Battery Installation Instruction	1
1.3 Robot Recharging	2
2 Product Overview	3
2.1 Product Overview	3
2.2 Function Instruction	4
2.2.1 Frequency Pairing	4
2.2.2 Standby Mode/Wake-up Function	5
2.2.3 Gesture Sensing Function	6
2.3 Remote Control Function Button	7
3 Romo App	9
3.1 Bluetooth Connection	9
3.1.1 App Permission Setting	9
3.1.2 Connection	10
3.2 APP Control	11
3.2.1 Programming	12
3.2.2 QA Quiz Game	15
3.2.3 Encyclopedic Knowledge	17
3.2.4 APP Control	17
4 Appendix	19
4.1 Specification	19
4.2 Safety Disclaimer & Precautions	19

1 Preparation Before Use

1.1 Ruko Romo APP Download Methods

1. Download the Romo App by searching "Ruko Romo" in Google or Apple App Store.
2. Download the Romo App by scanning the QR code provided below.



(For Android)



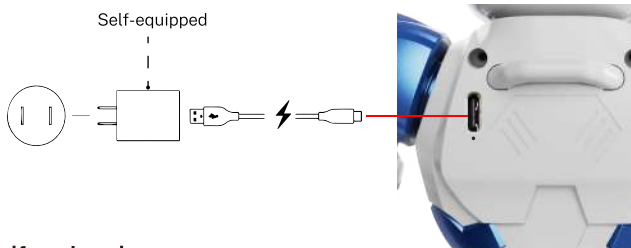
(For iOS)

3. Supported System
Android: 5.0 or later / iOS: 12.0 or later

1.2 Remote Control Battery Installation Instruction

1. Remote control requires 2 x 1.5V AAA batteries (Not Included) .
2. Use Philips screwdriver (Not Included) to open the battery cover on the bottom of remote control.
3. Assemble the batteries with correct polarity.
4. Install the battery cover by fixing the screw.

1.3 Robot Recharging



Self-equipped

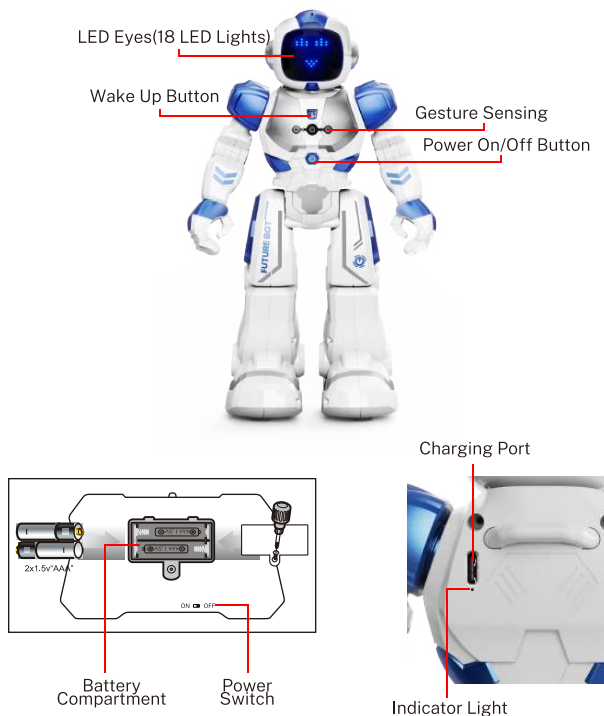
1. Use 5V/2A charging plug (Not Included).
2. The robot takes about 2-3 hours to charge and about 2 hours to use.
3. The indicator lights up in red when charging, and the light goes out when charging is complete.

Charging Precautions

1. Turn off the robot when not in use to avoid long standby periods.
2. The robot cannot be powered on while charging.
3. Only use the original charging cable; C-to-C cables will not work.
4. Do not charge the robot with any charger exceeding 5V/2A.
5. Do not overcharge—unplug the charging cable promptly once the battery is fully charged.
6. If the robot does not respond after being turned on, charge it for at least 30 minutes first.

2. Product Overview

2.1 Legends



- The remote control utilizes 2.4G signal, allowing for simultaneous play with multiple robots.

2.2 Function Introduction

2.2.1 Frequency Pairing

- Remote Control: The red light keep blinking after the battery is installed on the remote controller. That is the frequency pairing state. When frequency pairing completed, the red light will disappear (The robot transfers to the Standby Mode automatically when not in use).
- Robot: To turn on the robot, press the power button. The robot will light up and emit a sound. To turn it off, press the power button again.



2.2.2 Standby Mode/Wake-up Function

- When the robot is in the power-on state and there is no operation for 10 minutes, it will automatically enter standby mode.
- Before entering standby mode, a voice will be played approximately once every minute.
- While in standby mode, the robot cannot be controlled by the remote control.
- Standby mode can last for approximately 30 days, so it is recommended to recharge the robot within the time frame.
- To wake up the robot, press the wake-up button once or press the on/off button twice.

Wake Up Button

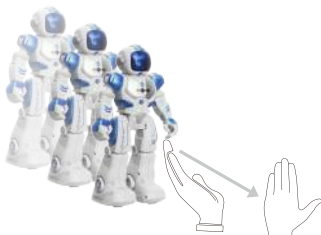


2.2.3 Gesture Sensing Function

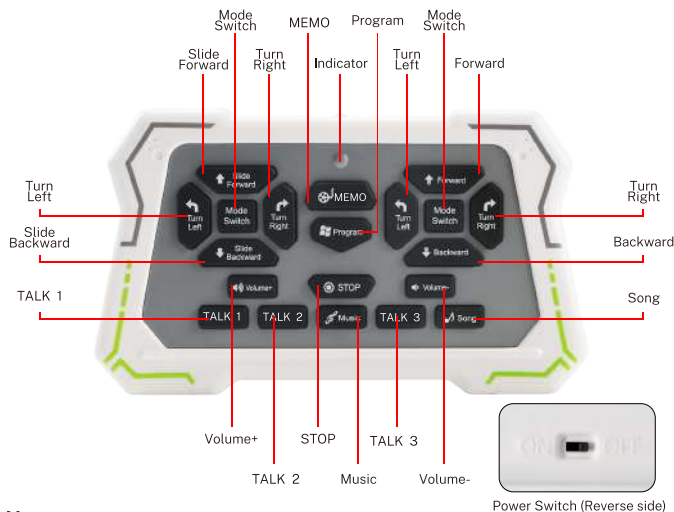
- The robot is capable of sensing gestures to move forward and backward, turn left and right.



GESTURE SENSING



2.3 Remote Control Function Button



Note:

- The arms do not swing when the robot is sliding, but they do swing when the robot is walking.
- Volume adjustment have a total of 5 levels, default volume is mid-range volume.

TALK 1	Robot Voice×1	TALK 2	English Songs ×9
Music	Music ×3	TALK 3	Robot Language ×1
Song	Songs ×9		

Programming

- Press the program button on the remote control. The robot will beep twice, indicating that you can program the robot with up to 50 functions using the buttons on the remote control.
- After editing, press the program button again. The robot will then start to execute editing instructions.
- The 2 Mode Switch buttons, Volume+/Volume- button and STOP button do not participate in programming editing.

Memo

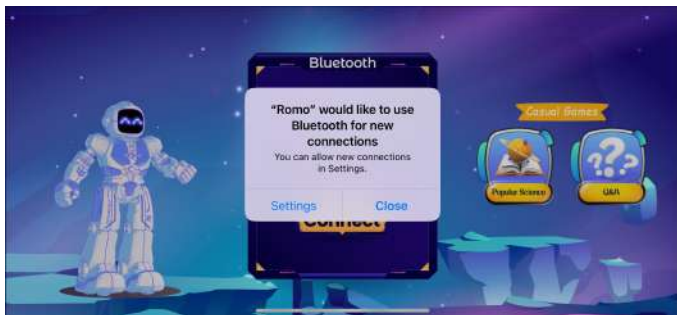
- Press the memo button, the robot will conduct the preset demonstration, total 3 demonstrations can be selected.

3 Ruko Romo App

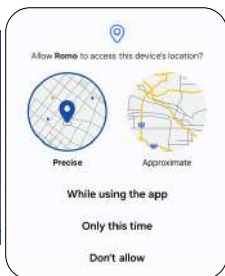
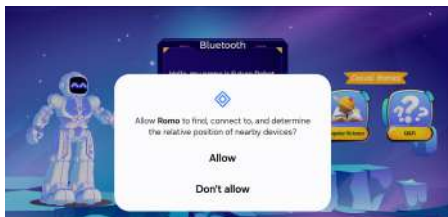
3.1 Bluetooth Connection

3.1.1 App Permission Setting

- iOS: set App Bluetooth permission, select "OK".



- Android: set App permission, select "Allow".



3.1.2 Connection



- After clicking the connect button, it will automatically search for a connection and take you to the operation interface upon successful connection.



- If Bluetooth connection is unsuccessful, the interface shown above will appear. Check if both the cell phone Bluetooth and robot are powered on, and then attempt to reconnect.

Attention

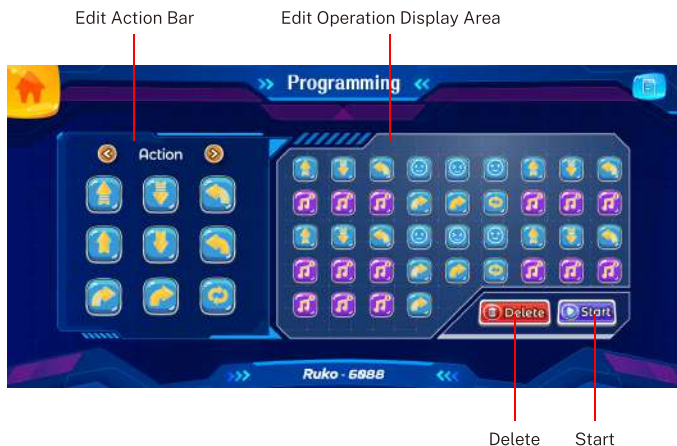
1. When the robot or Bluetooth is not connected, only the Encyclopedia Knowledge and QA Quiz Game in the app can be used.
2. The robot does not support the connection and control of multiple mobile phones at the same time.

3.2 APP Control

Operation Interface



3.2.1 Programming



Edit Action Bar

1. You can click the left and right arrows or slide the edit bar to turn the page.
2. Editable actions, emojis, music, English songs totaling 200.

Edit Operation Display Area

- ① Long press the icon in the display area can drag the function command to arrange and edit it.



- ② Double-click the icon in the display area to delete individual function command.



Programming Example

- Example 1:
If 2 consecutive emojis or music songs appear, they will be played in full before any further action is taken.



- Example 2:
When editing a single emoji or music, the robot will execute the emoji, music, and action commands at the same time.



3.2.2 QA Quiz Game

- 10 questions per round, click on the answer to automatically determine the score.



- ① The correct answer is indicated by a check mark and the system automatically moves on to the next question.



- ② To access the interface, answer at least 6 questions correctly. The robot will provide interaction action and sound.



- ③ If you answer a question incorrectly, your life value will decrease by one and you will automatically move on to the next question.



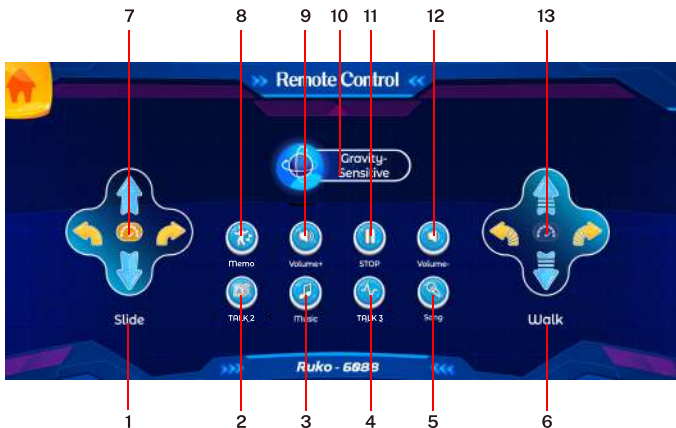
- ④ If you answer 5 questions incorrectly, your life value will be reduced to 0 and the interface will appear along with robot sound.

3.2.3 Encyclopedic Knowledge

- On this page, you can choose to view Planetary Science and Earth Science.




3.2.4 APP Control



1	Slide	7/13	Speed Adjustment
2	TALK 2	8	Memo
3	Music	9	Volume +
4	TALK 3	10	Gravity-Sensitive Function
5	Songs	11	Stop
6	Walk	12	Volume -

Gravity-Sensitive Function

- Tap  to enter the gravity sensing mode, you can tilt the phone forward, backward, left and right to control the robot's movements.



4 Appendix

4.1 Specification

Remote Control	Batteries	2 x 1.5V AAA batteries
	Signal	2.4G
	Control Distance	about 30 meters
Robot	Use Time	2 hours
	Charging Time	2-3 hours
App	Control Distance	within 10 meters

4.2 Safety Disclaimer & Precautions

1. It is recommended to use alkaline batteries.
2. Do not mix new and used batteries, or mix alkaline, standard (carbon-zinc), or rechargeable (nickel-cadmium) batteries.
3. Batteries should be inserted or replaced by an adult, as they are small and can be easily swallowed.
4. Batteries should be inserted with the correct polarity and only use batteries of the recommended type.
5. Non-rechargeable batteries cannot be recharged, while rechargeable batteries are not recommended.

6. Before storing the product for an extended period of time, remove the battery. To prevent battery corrosion, inspect and replace batteries regularly.
7. Please ensure the supply terminals are not short-circuited.
8. Avoid exposing the battery to extreme heat or placing it in a fire.
9. If the wheels at the bottom of the robot become obstructed and cannot rotate, please clean them promptly.
10. Please save this information for future reference.



rukotoy.com

CONTACT US FOR MORE TECH SUPPORT



+1(888)892-0155



Mon-Fri 7:00AM - 7:00PM (PST)



+1 (732) 207-0697



rukodrone@gmail.com

