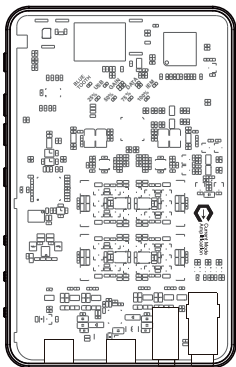


Questyle

Audio Engineering



SIGMA

Portable DAC with Headphone Amplifier

Made for

iPhone | iPad

快速入门指南 | Quick Start Guide | Schnellstart-Anleitung

PDF

クイックスタートマニュアル | 퀵스타트 가이드 | Guide rapide débutant





This device complies with part 15 of the FCC Rules. Operation is subject to the following two conditions: (1) This device may not cause harmful interference, and (2) this device must accept any interference received, including interference that may cause undesired operation. Any changes or modifications not expressly approved by the party responsible for compliance could void the user's authority to operate the equipment. NOTE: This equipment has been tested and found to comply with the limits for a Class B digital device, pursuant to Part 15 of the FCC Rules. These limits are designed to provide reasonable protection against harmful interference in a residential installation. This equipment generates, uses and can radiate radio frequency energy and, if not installed and used in accordance with the instructions, may cause harmful interference to radio communications. However, there is no guarantee that interference will not occur in a particular installation. If this equipment does cause harmful interference to radio or television reception, which can be determined by turning the equipment off and on, the user is encouraged to try to correct the interference by one or more of the following measures: Reorient or relocate the receiving antenna. Increase the separation between the equipment and receiver. Connect the equipment into an outlet on a circuit different from that to which the receiver is connected. - Consult the dealer or an experienced radio/TV technician for help. The device has been evaluated to meet general RF exposure requirement. The device can be used in portable exposure condition without restriction.

Product Overview

SIGMA is a portable DAC and headphone amplifier that brings Questyle's flagship desktop audio technology into a compact form. It features the highly acclaimed AK4493 DAC and supports high-resolution decoding up to PCM768kHz and DSD512. At its core are four patented PCT Current Mode Amplifier circuits in a fully discrete, fully balanced configuration, alongside Questyle's proprietary TTA three-stage decoding architecture-together delivering performance comparable to high-end desktop equipment. SIGMA is triple certified by Apple MFi, Snapdragon Sound, and Sony LDAC. It includes a high-capacity battery that supports simultaneous charging and playback to meet diverse professional audio demands.

With SIGMA, you can enjoy premium lossless audio on the go through smartphones and laptops-Hi-Fi audio is always within reach, wherever you are.

SIGMA features both USB and high-definition Bluetooth inputs, balanced and unbalanced headphone outputs, and allows users to freely switch between IEM and headphone output modes according to their needs.

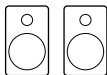
Supported Devices



Mobile Phone / Tablet / PC



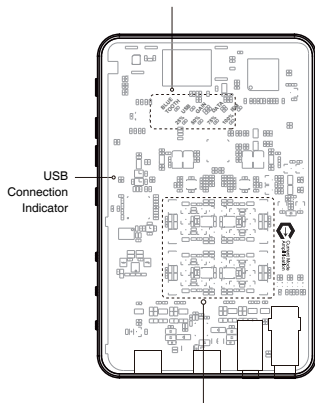
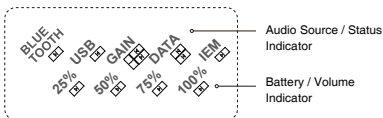
Music Streamer



Earbuds / Headphones / Active Speakers

Product Components

Front Panel



Four Questyle Patented PCT Current Mode Amplifiers
Fully Discrete, Fully Balanced Design

Product Components

Side Panel

Power Button

- Press and hold for 2 seconds to turn on or off
- Short press to check battery level

Function Button

- Short press to switch input source
- Long press to enter Bluetooth pairing mode

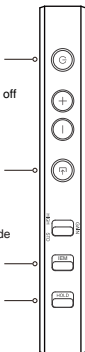
IEM / HP OUT Output Switch

HOLD Switch

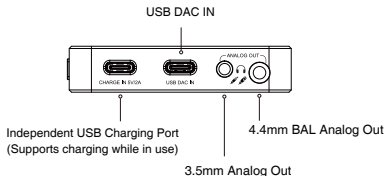
Volume Button

- Short press to increase volume by 1
- Long press to increase continuously
- Short press to decrease volume by 1
- Long press to decrease continuously

Gain Switch



Bottom View



Product Components

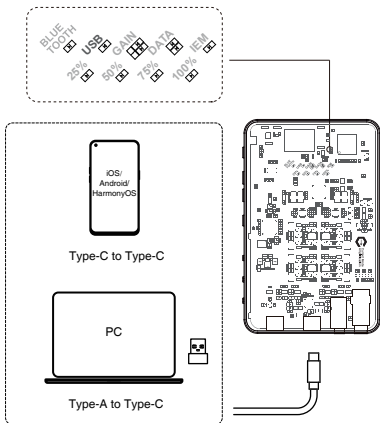
Sampling Rate Indicator

LED Indicators	Indicator Description
IEM/GAIN/DATA	<ul style="list-style-type: none">· IEM: IEM Output Mode - Amber· GAIN: High - Red, Standard - Amber· DATA: Hi-Res - Red, Normal - Amber
USB/ Bluetooth	<ul style="list-style-type: none">· Off when powered off or charging· Amber when powered on and USB/Bluetooth is selected· Bluetooth flashing slowly = not connected, flashing quickly = pairing mode, solid = connected
25%/50%/ 75%/100% Battery / Volume	<ul style="list-style-type: none">· Off when powered off or idle· Flashing while charging· When powered on, press POWER to check current battery level· Amber display
USB Connection	<ul style="list-style-type: none">· Illuminates amber when USB is connected

Controls and Functions

USB DAC Input

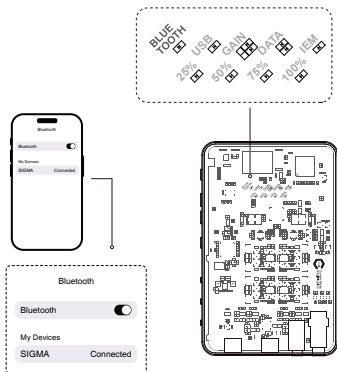
- Connect SIGMA's USB DAC input to an iPhone, tablet, or Android phone using a Type-C to Type-C cable, or connect to a PC using a Type-A to Type-C adapter.
- Press the Function button to set the indicator to "USB".
- The "USB" LED will light up in amber.



Controls and Functions

Bluetooth Operation

- Press the Functionbutton to set the indicator to "BLUETOOTH".
- When the Bluetooth indicator flashes quickly, SIGMA enters pairing mode. On your phone, search for "SIGMA" in the Bluetooth list. Tap to pair. The LED will stay solid to indicate a successful connection.
- If the indicator flashes slowly, SIGMA is not connected. Long press the Function button to start pairing.
- The "BLUETOOTH" LED will display amber.



Gain Control of Headphone Amplifier

There are two Gain control options:

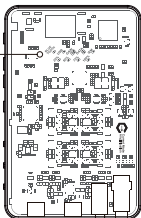
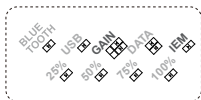
- HIGH is for high gain mode, it is used to drive high-impedance devices.
- STD is for standard mode, it is used to drive devices of high sensitivity and low impedance.

In HIGH mode:

GAIN LED shows red.

In STD mode:

GAIN LED shows amber.



IEM / HP OUT Output Indicator

Output Mode Options:

- IEM Mode: For low-impedance, high-sensitivity devices.
- HP OUT Mode: For high-impedance, low-sensitivity devices.

In IEM mode:

IEM LED shows amber



In HP OUT mode:

IEM LED is off



Volume & Battery Indicators

Volume Indicator

- Short press the “+/-” button to adjust the volume step by step, long press to adjust continuously.
- There are 4 volume indicator LEDs from left to right: 25%/50%/75%/100%.
- Each LED contains 16 micro-steps, for a total of 64 volume levels.



Battery Indicator

- When powered on, press the POWER button to display the current battery level for 5 seconds
- 76%–100%: 4 LEDs on from left to right
- 51%–75%: 3 LEDs
- 26%–50%: 2 LEDs
- 1%–25%: 1 LED

Charging

- 5V / 2A input via USB charging port.
- Charging LED blinks amber while charging.
- Leftmost LED blinks rapidly when battery is low-please recharge.
- Supports simultaneous playback while charging.

For Windows XP/Vista/7/8 users, to enable UAC 2.0 functionality, a driver must be installed, please visit the Questyle website for driver download and installation instructions: www.questyle.com

Technical Specifications

USB Playbac	Max PCM Decoding: PCM768kHz/32bit, DSD Native: DSD64, DSD128, DSD256, DSD512, DSD Dop: DSD64, DSD128, DSD256 UAC 2.0 supported Supported system: Win XP/Vista/Win7/Win8/Win10/Win11/ Linux/Android/HarmonyOS/macOS and iOS
BLUETOOTH	Supports SBC/AAC/aptX/aptX HD/LDAC decoding
Max.Output Power	1200mW@320 Balanced
THD+N	<0.0003% @20mW, 300Ω
Line Out	Single Ended: >2.5V Balanced: >6.8V
SNR	120dB
Battery Life	>12h

Package Contents



SIGMA x1



User Manual x1
Warranty Card x1



Type-A to Type-C
Adapter x1



Type-C to Type-C
Cable x1



Type-C Charging
Cable x1



Questyle Audio Technology Co.,Ltd.

旷世科技有限公司

Address: Room 13A, Floor 13, Yunsong Building,
Tairan 8th Road, Futian District, Shenzhen, China, 518040

Phone: +86-755-8283-5670 | +86-755-8284-0732

Email: info@questyle.com

Questyle reserves the right of final interpretation for this product. Design and specifications are subject to change without notice.

*Questyle Audio Technology Co.,Ltd. reserves the rights of final interpretation of this product. Design and parameters are subject to change without prior notice.

www.questyle.com