

Bazyths



www.bazyths.com

ENJOY YOUR NEW BAZYTHS SMART TOILET

Please contact Bazyths Support if you have any questions.

Contact Information:

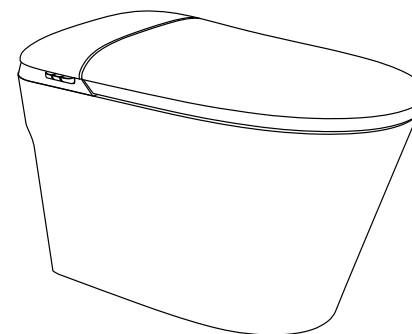
support@bazyths.com

Bazyths
www.bazyths.com
support@bazyths.com

INSTRUCTION

BAZYTHS SMART TOILET

Concealed cistern series



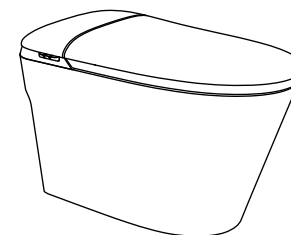
- Thank you for purchasing our product.
Before using, please read the instruction carefully.
Please keep the instruction properly for further reference.
- Our company reserves the right of final interpretation for this manual. The manual is subject to change without notice.

Catalogue

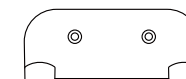
Packing List	02
Installation of the Battery Box	04
How to Use the Foam Shield Function	05
Components	06
Technical Drawing	07
Features	07
Attentions	10
Installation Instruction	17
Preparation before Use	22
Panel Instruction	23
How to Use	26
Function Setting and Adjustment	27
Cleaning and Maintenance	32
Troubleshooting	36
Warranty	37
Function List	38
Product Specification	39
Acceptance Record	40

Packing List

Dear user,
Please count the following items after opening the package:

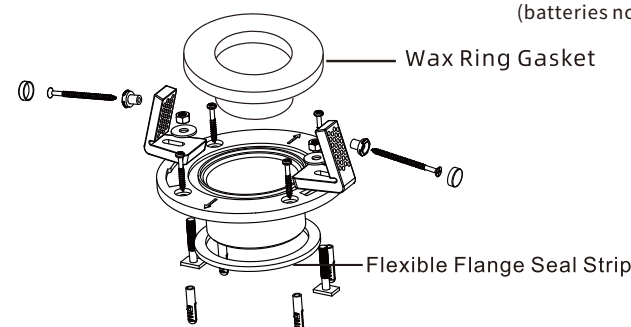


Smart Toilet

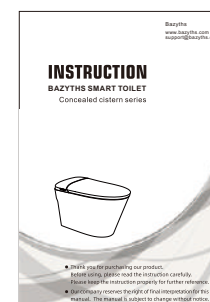


Remote Control & Mounting Bracket

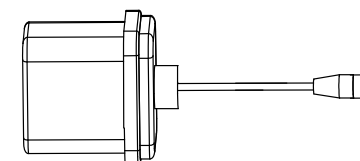
Requires 2 AAA alkaline batteries
(batteries not included).



Flange, Sealing Wax Rings,
Mounting Accessory Kit



Instruction Manual



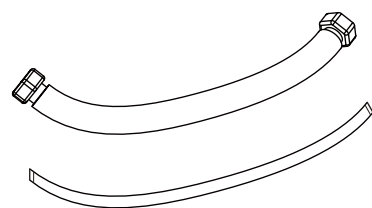
Backup Battery Box
for Power Outage Flush

Requires 10 AA alkaline batteries to enable flushing during a power outage(batteries not included, please purchase separately or contact support@bazyths.com to obtain free batteries).

Packing List

Dear user,

Please count the following items after opening the package:



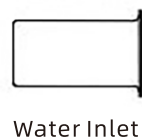
1 Braided Hose (for Flushing Water)
1 Plastic Hose (for Cleansing Water)
(Pre-installed)



Spare Part: 3/8" Female
to 1/2" Male Adapter

If your existing shut-off valve has a 3/8" outlet, you can use this spare part to connect it to our smart toilet without the need for replacing the valve.

Shut-off Valve & T-Valve



Water Inlet

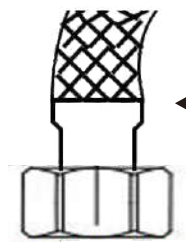
1/2" Nom Outlet



1/2" Nom/Comp Inlet



T-Valve
with Filter

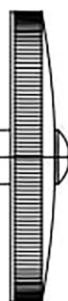


Braided Hose
for Flushing Water



Plastic Hose
for Cleansing Water

Shut-off Valve



Battery Box for Power Outage Flush

Installation of the Battery Box for Power Outage

1. This battery box is for use as backup during power outages. **The battery box must not be used simultaneously with a plugged-in power source when the toilet is in operation.** It is recommended to connect it to the main unit only during power outages. We accept no responsibility for the consequences of using dual power sources at the same time, and such usage is not covered by the warranty.

2. Before activating the power outage flushing function, install 10 AA alkaline batteries (batteries not included, please purchase separately or contact support@bazyths.com to obtain free batteries) into the battery box in advance (open the battery box with a screwdriver). Do not mix new and old batteries, batteries of different models, or batteries from different brands. When replacing the batteries, ensure that all are replaced at the same time.

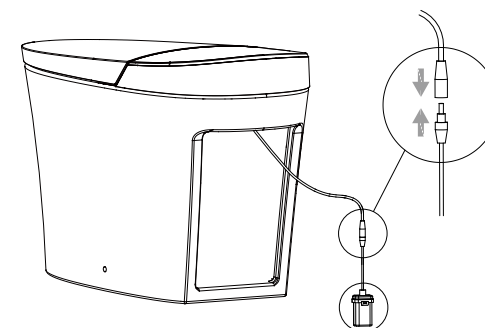
3. Please follow the "+" and "-" signs on the battery box when installing batteries. This battery box is a series battery group, and no single cell can be reversed. Failing to do so may cause battery damage, and in severe cases, may pose safety hazards such as explosion and combustion.

4. Take out the battery connection cable from the rear side of seat cover and connect it to the battery box, ensuring that it is plugged in place.

5. Do not disassemble the battery box unnecessarily. After replacing the battery, make sure to seal the battery box tightly. If moisture from the bathroom gets into the box, it could cause the batteries to rust and become damaged.

6. When replacing batteries, disconnect the battery box from the main unit.

7. To avoid potential hazards, this battery box cannot be recharged.



How to Use the Foam Shield Function

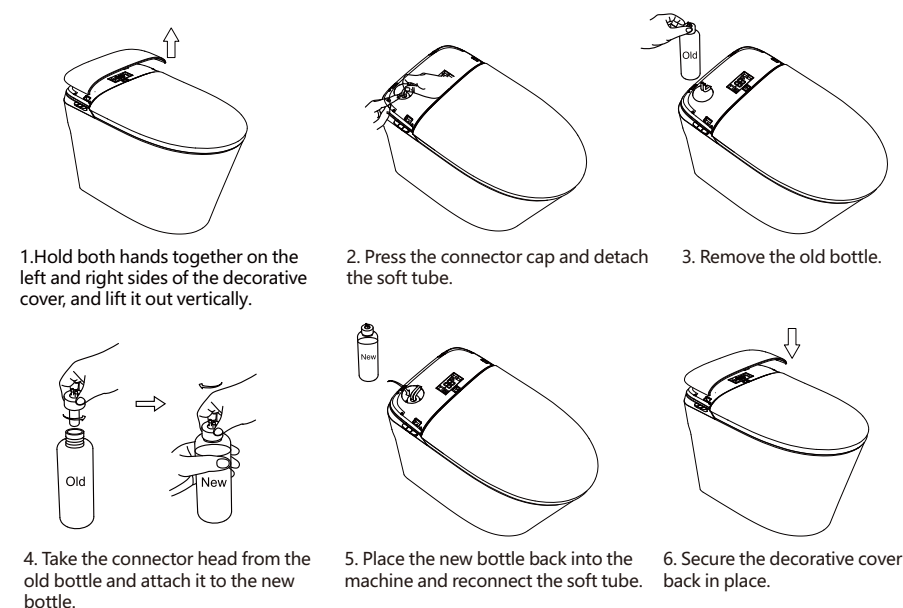
■ Introduction to the Foam Shield Function

The Foam Shield creates a soft foam layer inside the toilet bowl that prevents splashing, blocks odors, and keeps the bowl cleaner. It is an innovative feature designed to enhance hygiene and provide a more comfortable and pleasant bathroom experience.

■ How to Get Your Free Foam Shield Liquid

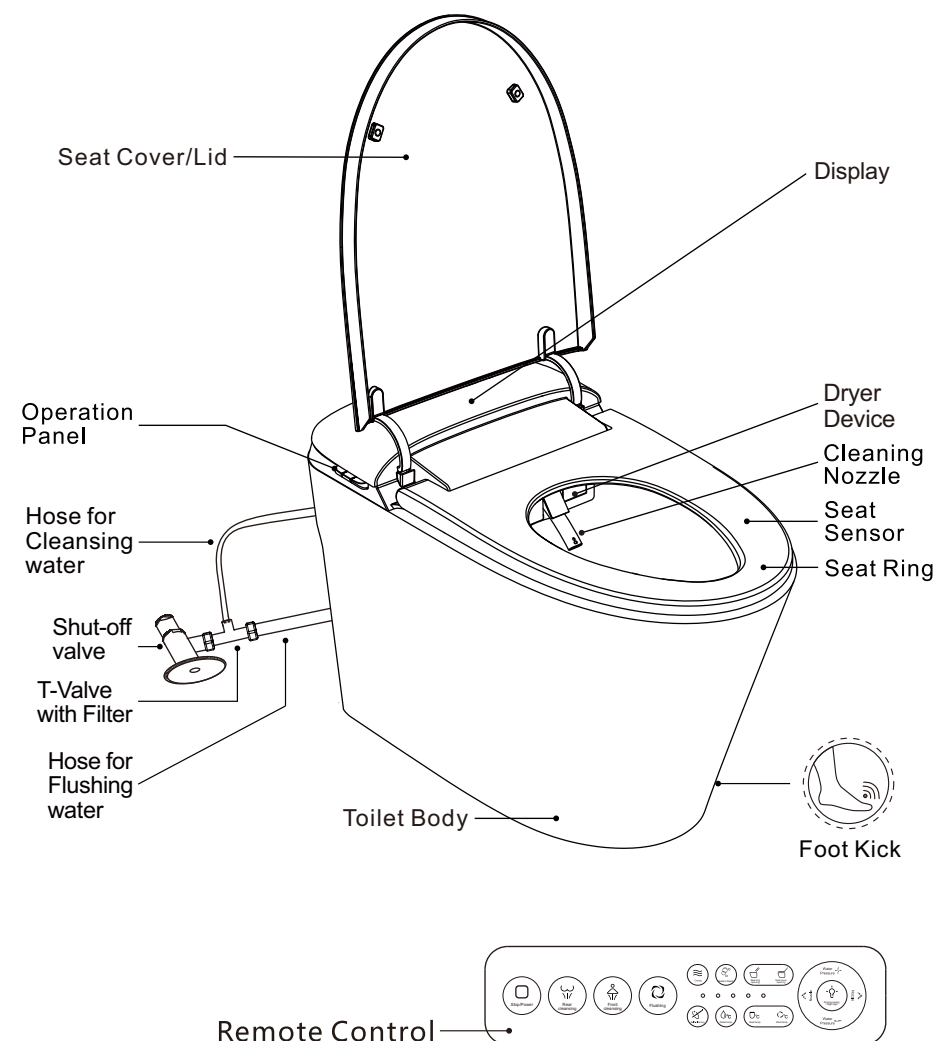
For transportation safety, the foam liquid is not pre-filled in the foam shield bottle. After receiving your toilet, please contact us at support@bazyths.com to request the foam liquid. Your first bottle is completely free, and we will ship it to you separately.

■ Replace the Foam Shield Bottle

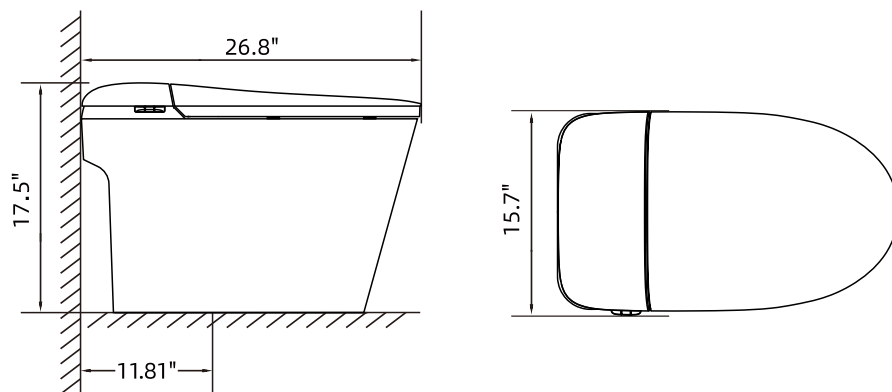


Note: Regardless of whether you use the Foam Shield function, please ensure that a foam liquid bottle is placed here and that the soft tube is connected to the bottle. Without a bottle, water leakage may occur.

Components



Technical Drawing



Features

Automatic Opening of the Toilet Lid / Automatic Closing of the Lid & Toilet Seat

The toilet lid automatically opens when the user approaches the toilet. The seat and lid automatically close 2 minutes after the user leaves the toilet's sensor range. Press the Dryer button on the remote control to turn this function on or off.

Foot Kick to Open/Close the Lid or Seat

The foot kick feature allows users to conveniently open or close the toilet lid or seat by pressing the button with their foot. This hands-free operation is hygienic, simple, and intuitive to use.

Rear Wash

Water is released from the single nozzle for a powerful cleaning effect. The cleaning cycle lasts for 90 seconds. You can stop it anytime by pressing and holding the side button on the toilet for 2 seconds (while seated) or by pressing the "Stop" button on the remote control.

Feminine Wash / Front Wash

Designed for gentle cleaning specifically for female use.

Warm Air Dryer

The warm air dryer has 4 temperature settings (room temperature, high, medium, low) for drying after cleansing.

Features

360° Foam Shield

Automatically activates when you sit, creating a foam layer that prevents splashing, blocks odors, and resists bacteria for a cleaner, more hygienic experience.

One-Twist Quick Mode (Wash + Flush + Dry)

When you activate a cleaning mode using the button (rear wash or feminine wash), the system will automatically follow a one-press sequence: wash, flush, and dry. Each cleaning cycle lasts 90 seconds, followed by automatic flushing and a 3-minute drying cycle.

If the full 90-second wash cycle is not needed, you can skip directly to the flushing and drying phases. For example, if the rear wash is currently active, simply press the rear wash button again to skip the remaining wash time and proceed to flushing and drying.

Remote Control

All functions can be accessed via the wireless remote control.

Rear Wash with Moving Nozzle

The nozzle moves back and forth to provide a thorough cleaning over a wider area. To toggle between moving and non-moving cleaning, simply press the current wash button again on the remote control (for example, if rear wash is active, briefly press the rear wash button again to toggle). Please note that only the remote control can be used to switch between moving and non-moving cleaning modes.

Feminine Wash with Moving Nozzle

The nozzle moves back and forth to provide gentle cleaning over a wider area.

Cleansing Strength Adjustment

Adjust the cleansing strength/water pressure according to your preference.

Cleansing Position Adjustment

Adjust the cleansing position by moving the nozzle back and forth.

Cleansing Water Temperature Adjustment

4 levels of cleansing water temperature adjustment: normal (room temperature), high, medium, and low.

Seat Sensor

All corresponding functions will be activated and ready after the user is seated.

Toilet Seat Temperature Adjustment

Heated seat with 4 levels of temperature adjustment: normal (room temperature), high, medium, and low.

Auto Off-Seat Flush

Automatically flushes after use when the user stands up from the toilet seat.

Foot Kick to Flush

Flush by pressing the button with your foot.

Flush by Remote Control

Flush by pressing the flush button on the remote control.

Press the button to flush water

Press the side button on the smart toilet to flush.

Night Light

The night light is designed to be gentle on the eyes. It provides enough illumination to navigate the bathroom without turning on harsh overhead lights.

Nozzle Cleaning

Press and hold the corresponding button on the remote control when the seat is unoccupied. The nozzle will enter self-cleaning mode, making daily maintenance easy.

Nozzle Auto Cleaning

The nozzle will automatically clean itself before and after use.

Power Outage Flush

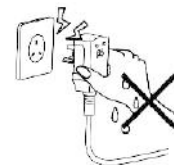
Equipped with a backup battery box, the backup battery can be activated for flushing during a power outage.

Attentions



NO WATER

Do not pull the plug with wet hand.

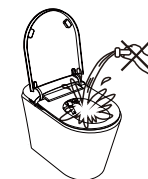


▲Otherwise, it may cause electric shock.



PROHIBIT

Do not pour water, detergent or deodorant on the smart toilet main unit and power plug. Otherwise:



▲It may cause fire, electric shock, short circuit or damage.

▲Injury or indoor water seepage may occur due to product damage.



PROHIBIT

When there is thunder, do not touch the power plug.

▲Otherwise, it may cause electric shock.



PROHIBIT

Do not touch the water inlet hose to the power plug or outlet.

▲Otherwise, it may cause fire, electric shock, heating, or short circuit due to condensation.



PROHIBIT

Do not damage the power cord or plug. Do not forcefully drop, pull, twist, bend, scratch, process, heat, place heavy objects on, tie, or clamp the power cord or plug.

▲Otherwise, it may cause product damage. Continuing to use the product in a damaged state may cause fire, electric shock, heating, or short circuit.



Do not use power outlets that are loose or malfunctioning.

▲ Otherwise, it may cause fire or short circuit.

PROHIBIT



Please use power outlets and wiring tools within the specified range.

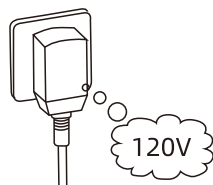
▲ When the wiring exceeds the specified range of the outlet, it may cause fire due to overheating.

PROHIBIT



Do not use a power source other than the specified one (AC 120V, 60Hz). Please do not plug in until the inlet valve opens.

PROHIBIT



▲ Otherwise, it may cause fire.



Do not disassemble, repair, or modify this product on your own.

▲ Otherwise, it may cause fire, electric shock, heating, short circuit or damage.

NO DISASSEMBLE



Do not install on a moving vehicle, ship, or other mobile structure. Otherwise:

▲ It may cause fire, electric shock, short circuit, or malfunction.

▲ The seat ring, seat cover, and smart toilet main unit may be damaged due to detachment and falling.

PROHIBIT



When the smart toilet malfunctions, do not continue to use it. In the following situations, turn off the power and close the water inlet valve to stop the water supply.

PROHIBIT

*Water leaks from the hose or product inside to the outside.

*The product has cracks or damage.

*Abnormal sound or odor.

*Product smoking.

*Product abnormal heating.

*The cushion of the seat ring falls off.

▲ Continuing to use the product in a malfunctioning state may cause fire, electric shock, heating, short circuit, injury, or indoor water seepage.



Do not use water sources other than tap water or potable well water (groundwater). Otherwise:

▲ It may cause corrosion in components or machine malfunctions.

▲ It may cause skin inflammation or burns due to unclean water.

PROHIBIT



Do not put your fingers or other objects into or block the warm air outlet, and do not place or cover objects or clothing on the warm air outlet.

PROHIBIT

▲ Otherwise, it may cause burn, electric shock, or burning of accessories.



Beware of low-temperature burns.

MANDATORY

▲ Improper use of the warm seat ring may result in low-temperature burns.

▲ If sitting on the seat ring for a long time, please set the temperature of the seat ring to normal/unheated (room temperature).

▲ When using the warm seat ring or warm air drying function, please set the temperature of the seat ring to normal/unheated (room temperature) and the temperature of the warm air dryer to the lowest setting for the following groups of people.

* Children, the elderly, and those who are unable to adjust the temperature to a suitable level themselves.

* Individuals with behavioral impairments such as patients or people with disabilities.

* Individuals who have taken hypnotic drugs (such as sleeping pills, cold medicine, etc.), heavy drinkers, and those who are excessively fatigued must use this product under the supervision of a responsible person.



Please confirm that the power outlet has been waterproofed.

MANDATORY

▲ Make sure of the position of the outlet before installation and keep it away from the bathtub as much as possible.

▲ If it is not waterproofed, it may cause fire or electric shock.

▲ For the installation and waterproofing of the outlet, please consult qualified professionals.



Please confirm that the outlet being used is correctly grounded.

MANDATORY

▲ Otherwise, it may cause electric shock due to malfunction or short circuit.

▲ When installing the ground wire, please entrust a professional installation company.



MANDATORY

Do not pull out the power plug by holding the power cord. When unplugging the power plug, do not hold the power cord, but hold the power plug.

▲Otherwise, it may cause fire or heating due to damage to the power cord.



MANDATORY

Please make sure to firmly insert the power plug into the outlet.

▲Otherwise, it may cause fire, heating, or short circuit.



MANDATORY

If the power cord is damaged, it must be replaced by the manufacturer, maintenance department, or other professionals to avoid potential hazards.



MANDATORY

When performing maintenance (not include the nozzle cleaning function), be sure to turn off the power.

▲Otherwise, it may cause electric shock.



MANDATORY

This is an electrical product. Do not install it in places where it is easy to be splashed with water or where the humidity is high. When using it in the bathroom, please install an exhaust fan or ventilation opening to keep the bathroom well ventilated.



▲Otherwise, it may cause fire or electric shock.



MANDATORY

When removing the smart toilet main unit, be sure to disconnect the power.

▲Otherwise, it may cause fire or electric shock.



MANDATORY

Individuals with physical, sensory, or cognitive disabilities, or those lacking experience and knowledge of this product (including children), must use this product under the supervision of a responsible person. Children should not play with this product.

▲Otherwise, it may cause burn, electric shock, fire, or injury.



NO BURNING

Do not let cigarettes or other sources of fire get close to the product.

▲Otherwise, it may cause fire.



PROHIBIT

When maintaining plastic parts (seat ring, seat cover, etc.) and water inlet hoses, please use kitchen detergent (neutral). Do not use the following items: toilet cleaner, household detergent, gasoline, benzene, washing powder, or nylon brushes. Otherwise:

▲It may damage plastic parts, causing cracks and resulting in personal injury or malfunction.

▲It may damage the water inlet hose and cause water leakage.



PROHIBIT

Do not forcibly impact the product. Do not place heavy objects on or stand on the seat ring, seat cover, or smart toilet main unit. Otherwise:

▲The product may crack, and the smart toilet main unit may detach and fall, causing personal injury.

▲Injury or indoor water seepage may occur due to product damage.



PROHIBIT

Do not use the smart toilet when its main unit is loose.

▲Otherwise, the smart toilet main unit may detach and fall, causing personal injury.



PROHIBIT

Do not use your hands to lift the smart toilet main unit by holding the seat ring or seat cover. Do not open the seat ring or seat cover when there are items on them.

▲Otherwise, the smart toilet main unit may detach and fall, causing personal injury.



PROHIBIT

Do not violently open or close the seat cover or seat ring, or swing the seat cover and seat ring quickly. Otherwise:

▲The flipping device may fail due to the powerful external force.

▲The main unit may break or detach from the toilet body due to powerful external force, causing personal injury.



PROHIBIT

Do not bend or damage the water inlet hose.

▲Otherwise, it may cause water leakage.



To prevent sudden water leakage, do not remove the filter in the t-valve when the shut-off valve is open.

PROHIBIT

▲ Otherwise, water may spray out.

▲ Please refer to the cleaning method for the water inlet filter described on page 33.



Please use the new hose component provided with the product. The old hose cannot be reused.

PROHIBIT

▲ Using the old hose component may result in water leakage or hose rupture.



When water leaks, be sure to turn off the shut-off valve.

MANDATORY



In order to prevent pipes or hoses from being damaged due to freezing, anti-freezing measures should be taken.

MANDATORY

▲ When the water inlet hose is frozen, it may damage the main unit of the smart toilet or the pipe and cause water leakage.

▲ If the room temperature is below 32°F/0°C, it is recommended to empty the water inside the product to prevent internal cracking due to freezing.



When the smart toilet is not used for a long time, be sure to drain the water from the smart toilet main unit and water inlet hose, and disconnect the power supply. When using it again, please first let the water flow through, and then use it. Otherwise:

MANDATORY

▲ It may cause skin inflammation due to water deterioration.

▲ If the power is always turned on, it may cause fire or heating.



When installing the water inlet filter, make sure to tighten it firmly to the correct position.

MANDATORY

▲ Otherwise, it may cause water leakage.



Do not use any paper other than toilet paper, and do not drop objects that may clog the drain into the toilet bowl.

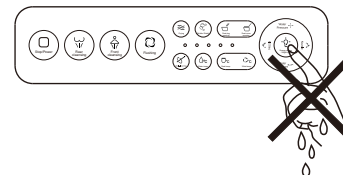
MANDATORY

▲ Otherwise, it may cause blockages in the ceramic pipes of the toilet.



Do not operate the remote control with wet hands, and do not spill water on the remote control.

PROHIBIT



▲ Otherwise, it may cause remote control malfunctions.



Do not put any solid substances or corrosive liquids into the water tank.

PROHIBIT

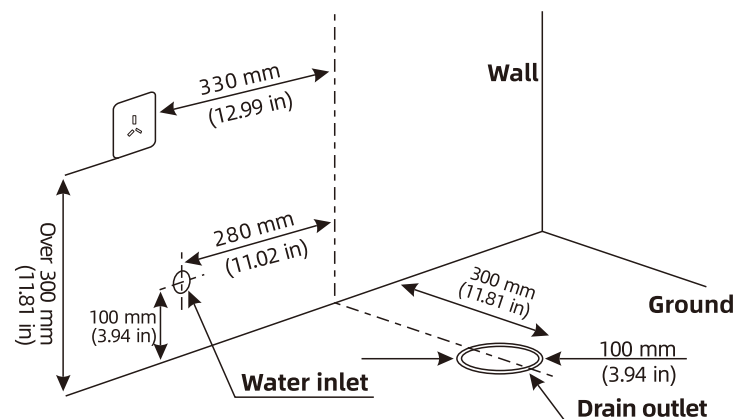
▲ Otherwise, it may cause blockages or corrosion of the flushing water pipe.

Installation Instruction

■ Installation of the Smart Toilet

1. Confirmation of installation environment

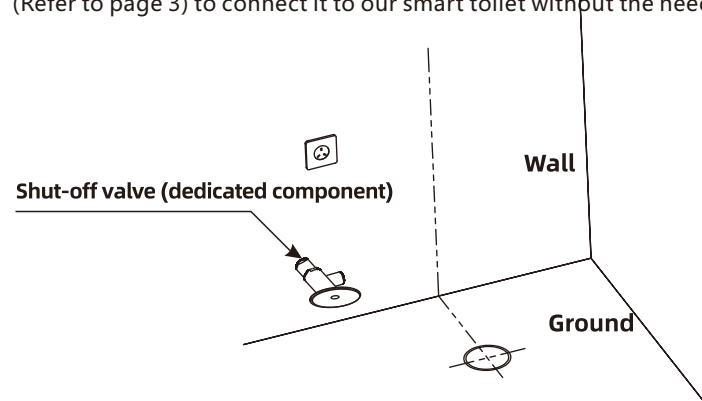
Before installation, please confirm that the bathroom wall and floor tiles have been completed, and that the sewage pipes, water pipes, and electrical circuits have been reserved as shown in the figure below. This toilet rough-in is 300mm (11.81in); Water inlet pressure range: 0.15Mpa (dynamic) - 0.75Mpa (static); water inlet temperature: 4°C-35°C (39.2°F-95°F).



2. Assembly of dedicated shut-off valve

Install the shut-off valve provided with the product.

- Note: If your existing shut-off valve has a 3/8" outlet, you can use our Spare Adapter (Refer to page 3) to connect it to our smart toilet without the need to replace the valve.



3. Installation and fixation of the toilet

⚠ The included flange is designed for an inside fit with a 4-inch drain pipe. If you have a 3-inch drain pipe, please purchase a compatible flange locally.

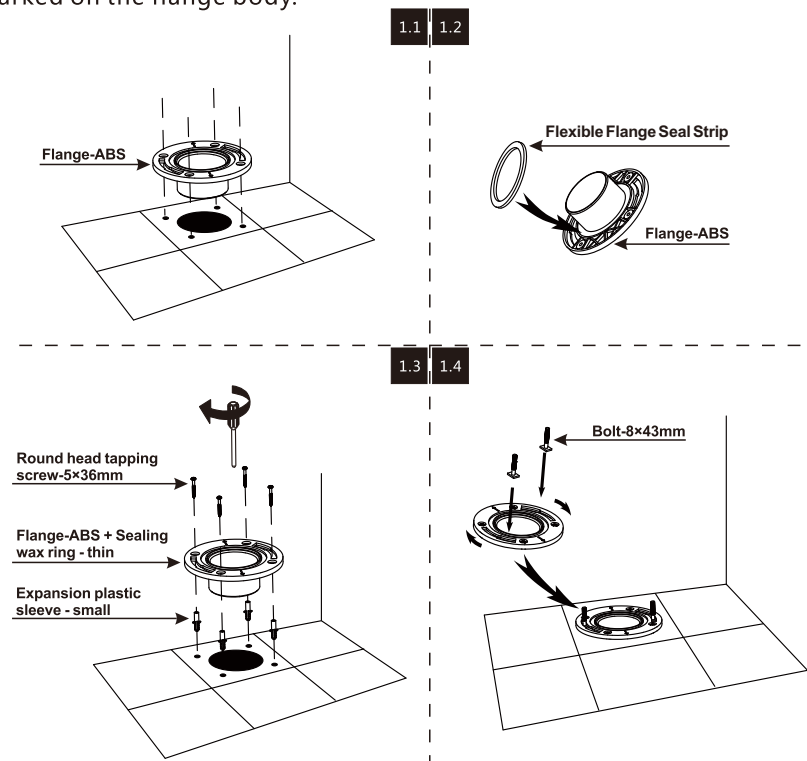
⚠ We recommend installing the flange about 1/4 inch (0.6 cm) above the finished floor to prevent leaks.

<1.1> Align the "flange-ABS" on the ground drain outlet, adjust the "flange-ABS" arrow to point vertically to the wall, and mark the drilling position of the ground. Drill four holes in the ground according to the marks.

<1.2> Install "Flexible Flange Seal Strip" at the bottom of "flange-ABS"

<1.3> Insert the "expansion plastic sleeve - small" completely into the small hole; Align the hole position and install "flange-ABS" and "sealing wax ring - thin"; Use "round head self tapping screw-5×36mm" to lock.

<1.4> Insert the "bolt-8×43mm" into the slot of "flange-ABS"; Adjust "bolt-8×43mm" to make the center line of the two bolts perpendicular to the arrow marked on the flange body.



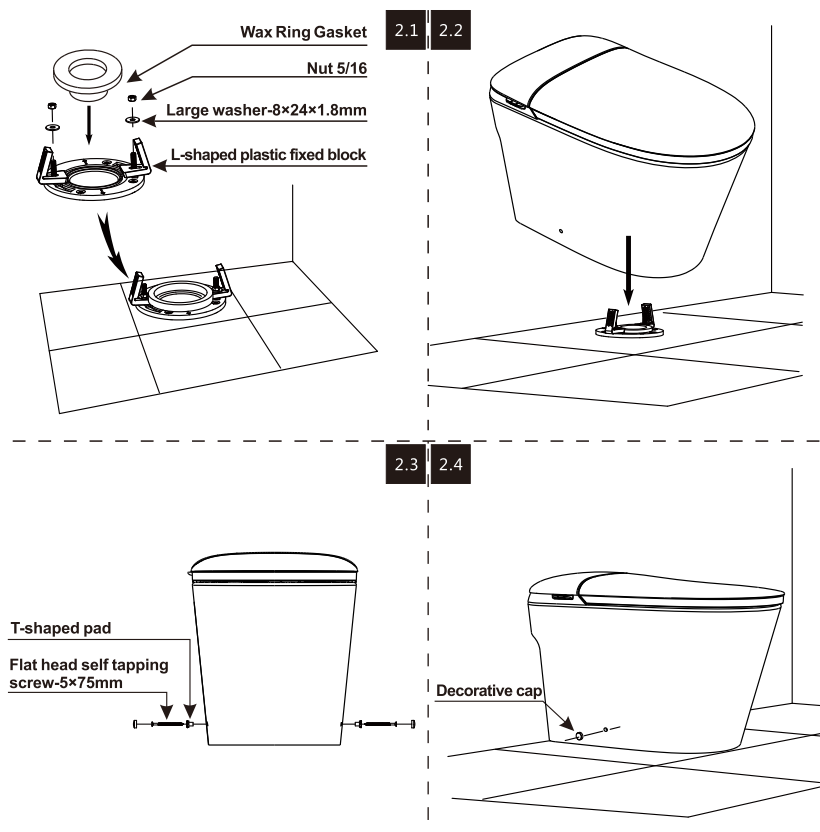
<2.1> Align the "Wax Ring Gasket" with the drain outlet and install it on the "flange-ABS". Insert two L-shaped plastic fixed blocks and gaskets into "bolt-7x43mm"; Then install the "large washer-8x24x1.8mm" and "nut 5/16" in sequence.

<2.2> Align the drain outlet of the intelligent toilet with the center of the flange for installation.

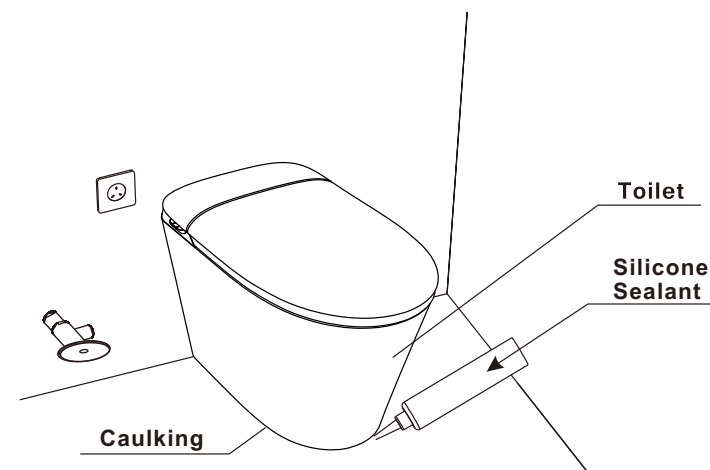
<2.3> Install the "T-shaped pad" on the small holes on both sides of the ceramic pan, and drive in the "flat head self tapping screw-5x75mm".

Note: If the screws securing the L-shaped plastic fixed block are too short, use the 90mm backup screws (included in the package).

<2.4> Cover the "T-shaped pads" on both sides with the "decorative caps".



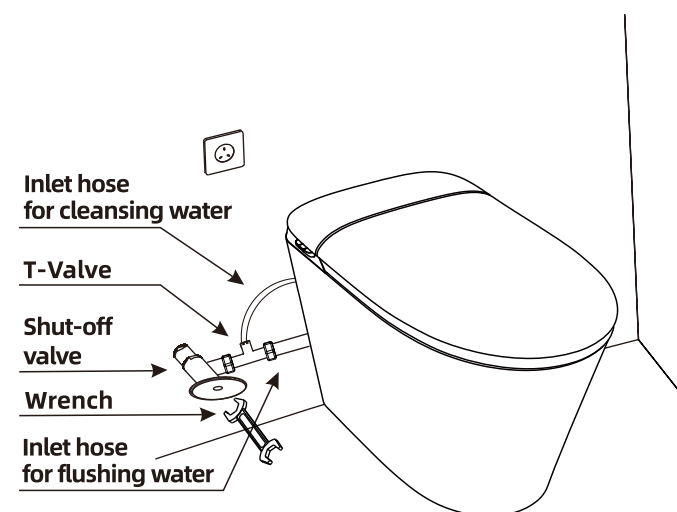
(3) Caulk the bottom of the toilet with silicone sealant.



4. Connection of the water inlet hose

Connect the inlet hose with the shut-off valve & t-valve by using tools like wrench.
(Valve Installation - Refer to Page 3 for Details)

● Notice: After installation, turn on the shut-off valve to check whether it leaks.



■ Installation of the Remote Control

1. Installation of remote control batteries.

Open the battery cover of the remote control and put two AAA alkaline batteries (batteries not included) into the remote control one by one.

- When installing the batteries, do not reverse the positive and negative sides of the batteries.
- Do not use different or different types of batteries at the same time.
- Remove the batteries when it is not in use for a long time.

2. Confirm the installation location of the remote control.

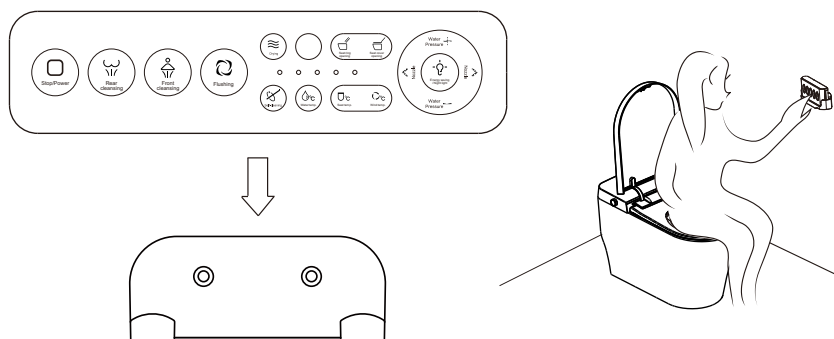
Install the remote control in a suitable area where it is easy to get or operate when user sit on the smart toilet.

3. Install the remote control bracket on the wall.

Peel off the protective tape of 3M adhesive on the back of the bracket and apply to the selected dry tile surface.

4. Install the remote control.

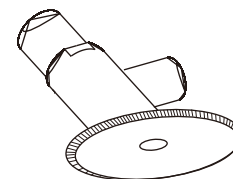
Align the remote control with the bracket, insert it from top to bottom, and the installation is completed.



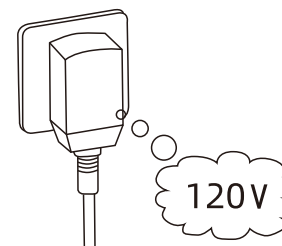
Preparation before Use

1. Open the shut-off valve

Turn the valve counterclockwise to fully open the water supply valve.



2. Plug the power plug into the outlet.



Plug the power plug into a 120V power outlet. The smart toilet will perform a self-check run once, and the main unit will be in standby mode.

- When performing a self-check, the toilet will automatically open and close the lid/seat ring, and reset itself. It is forbidden to block it manually.
- Do not use wiring that exceeds the power supply specifications, such as an extension cord.
- The outlet must be reliably and safely grounded.

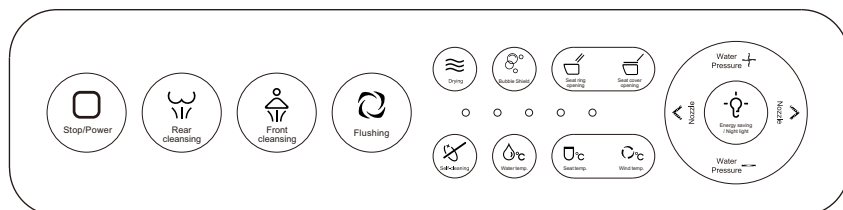
3. Adjust the cleansing water temperature and the seat temperature to the appropriate level.

4. Refer to Function Setting and Adjustment on Page 27 and use the remote control to operate various functions.

Panel Instruction

This product is designed primarily for remote control operation, with main unit panel operation as a supplement.

◆ Remote control panel



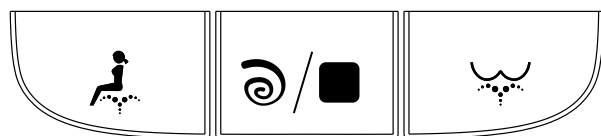
Applicable model: Automatic version

● Remote control code matching operation instructions:

Within 30 seconds after the host is powered on again, in the off-seat state, long press the side button "Front cleansing" for 3 seconds, the display blinks once and makes a buzzer sound, and then press the "Rear cleansing" button, the display blinks and buzzes, indicating that the display enters the alignment mode (it will automatically exit the alignment mode after 15 seconds without operation).

After entering the code alignment mode, press the Stop button on the remote control. The display stops blinking immediately and the buzzer stops ringing immediately, indicating that the code alignment is successful.

◆ Host operation panel



Front Cleansing

Flush/Stop

Rear Cleansing

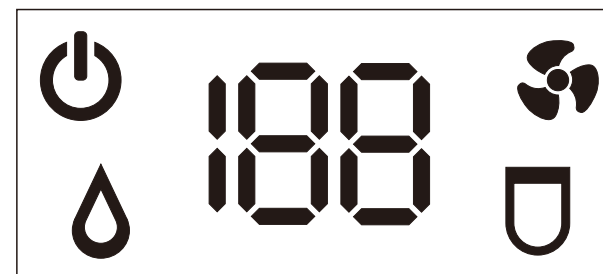
- In the unseated state, press the "Flush/Stop" button to manually flush.
- In the seated state, press the "Rear cleansing" button to carry out one-key

When seated on the toilet seat:

● After sitting down, press the front or rear cleansing button to activate the corresponding one-touch cleansing mode (90 seconds of cleansing + one flush + 3 minutes of drying). For example, pressing the "Rear Cleansing" button starts the 90-second rear cleansing mode, followed by one flush, and then automatically transitions to a 3-minute drying cycle.

● If you do not wish to complete the full 90-second cleansing cycle—for example, if 30 seconds of cleansing feels sufficient—you can press the corresponding button again to stop cleansing and proceed directly to flushing and drying. For instance, during rear cleansing, pressing the rear cleansing button on the side again will automatically skip to flushing and drying.

◆ Display Screen



Power indicator: Light up when the host is powered on.

88 Temperature level: Show the set temperature when the host is powered on.

Wind temperature icon : it is shown the setting warm air temperature when icon lights on.

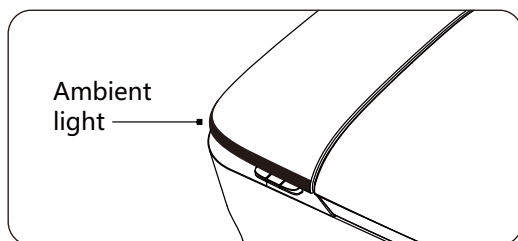
Seat temperature icon: it is shown the setting seat temperature when icon lights on.

Water temperature icon: it is shown the setting water temperature when icon lights on.

● The temperature displayed by the digital tube is the set temperature; Interval of 30 seconds, cyclic display of water temperature, seat temperature, wind temperature.

● When the people leaves the toilet sensor area, the display screen will be automatically turned off after seat cover closes down about 30 seconds.

◆ Ambient light



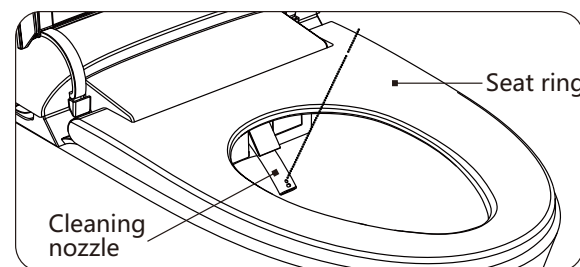
● Long press the drying button to turn on/turn off the ambient light function; The light will be on when human body near the sensor area and the light will be automatically off after leaving the sensor area for about 30 seconds.

How to Use

■ When seated on the seat

- ◆ When you hear the "beep" sound, all functions begin to start.
- ◆ Auto clean the nozzle once.

■ Start rear cleaning or front cleansing function




- ◆ Start the rear cleaning or front cleaning function by remote control.
- ◆ Adjust the cleaning position and water pressure by remote control.
- ◆ Start drying function by remote control.
- ◆ Press "stop" button, rear cleaning, front cleaning or drying stops working.

■ When unseated on the seat

- ◆ Auto flush the toilet once.

Function Setting and Adjustment

■ How to Turn On/Off the Radar Sensor Function




When the human body gets close to the front of the toilet, the cover will automatically open. Long press the rear cleansing button  on the remote control to open or close this function.

■ Lid/seat opening

This product has the lid/seat opening function. The human body gets close to the toilet and foot gently kicks the sensor to open the cover and seat ring.

Press the lid/seat opening button on the remote control to open the cover and seat ring.


Lid/seat opening by foot kick: In the state of unseated, when the seat cover is in the low position, gently foot kick the sensor on the side of the toilet pan once to open the seat cover; When the seat cover is in the high position and the seat ring is in the low position, gently foot kick once to open the seat ring; When the seat cover and seat ring are in the high position at the same time, gently foot kick once to close the seat ring and cover, and the toilet flushes once (if the last operation is flushing, then it will not flush again after cover is closed).

Lid/ seat opening by remote control: In the state of unseated, press the Lid Up button  on the remote control to open and close the seat cover; When the seat cover and seat ring are at the high position at the same time, press the Lid Up button  to close the seat cover and the toilet flushes once; Press the Seat Up button  to open and close the seat ring.


- When the toilet is in the rear cleansing / front cleansing / flushing condition, Lid/seat opening function will be set to suspending use.

■ Rear cleansing

This product has the rear cleansing function with single hole powerful cleansing.

Press the Rear cleansing button  on the remote control to enter the reciprocating cleansing state (the nozzle moves back and forth) with spray water in a single hole.


In the state of rear cleansing, press the same function button again to enter the reciprocating cleansing state (the nozzle moves back and forth). Press the same function button again to stop the reciprocating cleansing state (the nozzle stops moving) and switch to the cleansing mode, and the operation can be repeated.

- The rear cleansing function will be off automatically after 90 seconds. It can directly switch to other functions or press the stop button  to stop within 90 seconds.


- The nozzle will be auto-cleaning before and after rear cleansing function.

■ Front cleansing

This product has the function of front cleansing with special spray hole for women for gentle cleaning.

Press the button of front cleansing  on the remote control to enter the reciprocating cleansing state (the nozzle moves back and forth) with spray water in women's special spray hole.

In the state of front cleansing, pressing this button again to enter the reciprocating cleansing state (the nozzle moves back and forth). Press the same function button again to stop the reciprocating cleansing state (the nozzle stops moving) and switch to the cleansing mode, and the operation can be repeated.

- Front cleansing function will be off automatically after 90 seconds. You can directly switch to other functions or press the stop button  to stop it within 90 seconds.
- The nozzle will be auto-cleaning before and after front cleansing function.

■ Water pressure adjustment

In the state of rear cleansing or front cleansing, press the button of water pressure on remote control to adjust the strength of water pressure according to your preference.


- 4 levels of water pressure are available. Press the button of water pressure on remote control to start this function and adjust it to the comfortable water pressure intensity.

■ Nozzle position adjustment

In the state of rear cleansing or front cleansing, press the button of nozzle mast on remote control to move the nozzle back and forth and adjust the appropriate cleaning position to your preference.

- 4 levels of nozzle position are available. Press the button of nozzle mast on remote control to start this function and adjust it to the comfortable cleansing position.


■ Cleansing water temperature adjustment

Press the button  of water temp. on remote control, when hearing “beep” sound, it will enter the state of water temperature setting. Then it can be adjusted to the comfortable water temperature for cleansing.


- 4 levels of water temperature are available: Normal, high, medium and low. The water temperature will switch to another level every time you press the button of water temperature.

■ Drying function

Press the button of drying  on the remote control, it will dry the wet part after cleansing.

- The drying function will be off automatically for 3 minutes. It can be directly switched to other functions or press the stop button  to stop it within 3 minutes.

■ Drying temperature adjustment

Press the button of drying temp  on remote control, when hearing “beep” sound, it will enter the state of drying temperature setting. Then it can be adjusted to the comfortable drying temperature.

- 4 levels of drying temperature are available: Normal, high, medium and low. The drying temperature will be switched to another level every time you press the button of drying temperature.

■ Seat ring temperature adjustment

Pressing the button of seat temp  on remote control, when hearing “beep” sound, it will enter the state of seat ring temperature setting. Then it can be adjusted to the comfortable seat ring temperature.

- 4 levels of seat temperature are available: Normal, high, medium and low. The seat temperature will be switched to another level every time you press the button of seat temperature.


■ Night light

This product has lighting function, which is convenient for nightly use.


- Long press the button of night lamp to turn on/off the lighting function. The night lamp will be on or off.

■ Nozzle cleaning

Press the button of self-cleaning  on remote control, water will flow out from nozzle to clean the nozzle.

- Only in the state of unseated, the function of nozzle cleaning can be on.
- The nozzle cleaning function will be off for 90 seconds. Press the stop button  on remote control to finish it.

■ Power button

Long press the power button  on remote control, the host system can be on or off.

■ Flushing by remote control

Press the flushing button  on remote control to flush the toilet once. Continuous flushing needs 30 seconds interval.

- If the cleansing function is be on, doing the flushing operation would stop the cleansing function.

■ Flushing manually

In the off seat state, press the button  on the host side briefly to flush the water once.

- If the cleansing function is be on, doing the flushing operation would stop the cleansing function. And press the button again will conduct flushing.

■ Flushing by foot kick

Designed for men to urinate, no need to bend down to find the buttons or remote control to do the flushing. Just gently foot kick the sensor can achieve flushing.


■ Flushing when power off

In the absence of mains power, long press the button on the host side for 3 seconds to activate the power outage flushing function.

■ Foam Shield

Manual foaming: Press the foam shield function key on the remote control to trigger the foam function once.

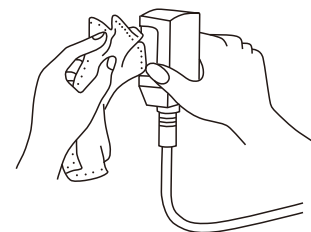
Auto-foaming: It will auto-foam once after sitting.

- Long pressing the remote control seat temperature function button  for 3 seconds to turn on/off the automatic foaming function.

Cleaning and Maintenance

■ Clean and Maintain the Power Plug

Please clean the power plug regularly. When cleaning, remove the power plug from the outlet and wipe it with a dry cloth.



- Dust accumulation on the power plug may cause fire.

■ Clean and Maintain the Main Unit of the Smart Toilet

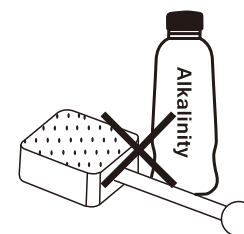
When cleaning the surface of the main unit, please wipe it with a soft, wet cloth.

- When cleaning and maintaining the smart toilet main unit, please pull the power plug out of the outlet to avoid any contact with water.
- If the surface has stubborn stains, you can use a soft, wet cloth with neutral kitchen detergent to clean it.


■ Clean and Maintain the Ceramic Part of the Smart Toilet

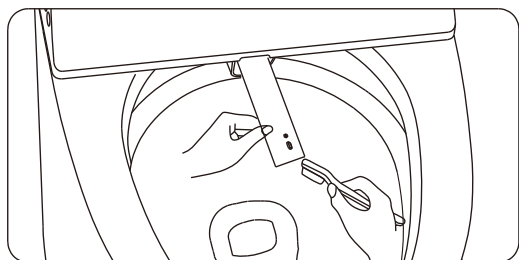
You can pour a neutral toilet cleaner onto a soft brush or sponge and use it to clean the ceramic part of the smart toilet. Rinse the area with tap water after cleaning.

- Do not use detergents or disinfectants that contain chlorine or are acidic.
- Do not use brushes that contain abrasive materials.

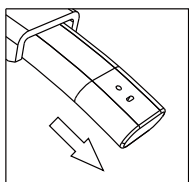


■ Clean and Maintain the Nozzle

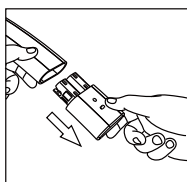
When the smart toilet is turned on, press the remote control button  to activate the nozzle cleaning function. The nozzle will extend and clean itself with water, and you can use a toothbrush to clean it at the same time. Please do not forcefully stretch the nozzle. When the nozzle moves forward, the nozzle can be removed and cleaned separately.



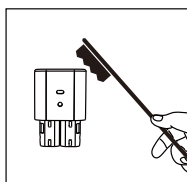
◆ Detachable nozzle model cleaning method



1. Press the button of self-cleaning on remote control to extend out the nozzle.



2. After the nozzle is extended, pull out the front nozzle with hand.

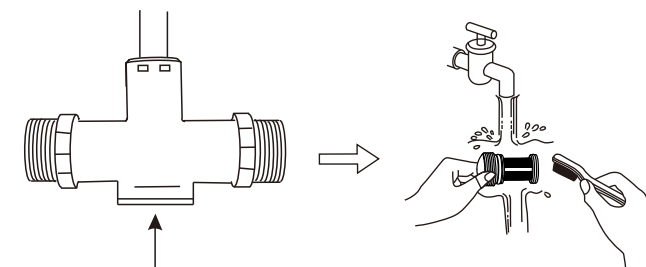


3. Use a toothbrush to clean the nozzle.

■ Clean and Maintain the Water Inlet Filter in the T-Valve

- Turn off the shut-off valve first to stop water supply.
- Remove the lock and the filter from the t-valve.
- Clean the filter with a brush or running water.
- Reinstall the filter. Make sure to screw it back in securely and not to leave behind the lock.

- Once the filter is cleaned and reinstalled, turn on the supply valve and check for any leaks. If there are any leaks, please double-check and reinstall the filter as needed.



Remove the Lock and the Filter

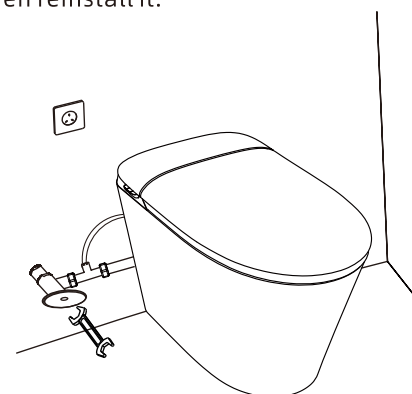
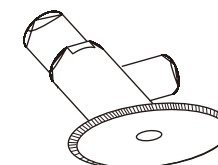
■ When not in use for a long time

When not using this product for a long time, please be sure to drain all the water from the smart toilet and use a dry towel to absorb any remaining water to prevent water deterioration and freezing. Also, turn off the power and remove the battery from the remote control

(1) Close the shut-off valve and stop the water supply.

(2) Unplug the power plug from the outlet.

(3) Remove the water hose from the shut-off valve, drain the water from the hose, and then reinstall it.



- When using again, open the shut-off valve, plug the power plug back into the outlet, turn on the power to use.

■ When Freezing Occurs

In cold seasons, the smart toilet may be damaged due to internal freezing. To prevent freezing, keep the power connected and perform the following operations:

(1) Set the seat temperature and water temperature to the highest setting.

(2) If the water hose inside freezes and causes the spray water to be blocked and unable to be ejected, please use a cloth soaked in warm water to warm up the water hose and slowly thaw it. You can also turn on the heater to warm up the room and let it thaw on its own.

■ When Condensation Appears

Due to the difference in temperature and humidity between bathroom and the ceramic parts/surface of the smart toilet, water droplets (condensation) may appear on the ceramic parts and surface of the main unit. Please ventilate the bathroom sufficiently to avoid condensation.

- When condensation appears, wipe it with a dry cloth.

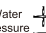
■ Replacing the Remote Control Battery

When the remote control becomes unresponsive or the indicator light does not light up, please replace the battery with a new one.

- When installing the battery, do not reverse the positive and negative poles.
- Do not use batteries of different ages or different types at the same time.
- When not in use for a long time, be sure to remove the battery.

Troubleshooting

Some malfunctions can be resolved by simple operations. Please confirm the following items before authorizing a professional to repair the product.

Problem		Possible Reason	Solution
Press the power button and it does not work (the ambient light is not on).		Is the power outlet powered on?	Please confirm whether there is a power failure or whether the circuit breaker has tripped.
		Is the power plug switch in the off position? (Is the power plug indicator light off?)	Press the reset button on the power plug to light up the indicator light.
		Is the power plug plugged in properly?	Reconnect the power plug and insert it completely.
The remote control is insensitive or unresponsive.		Is the remote control battery dead?	Replace with a new battery.
The seat temperature, water temperature, and drying temperature are not hot enough.		Are the temperature settings appropriate?	Use the remote control to set the corresponding temperature.
The button does not respond.		During normal operation, some buttons may not respond.	Some operations cannot be performed simultaneously (such as flushing during cleansing). Please read this manual carefully.
The nozzle does not spray water or the water pressure is weak.	Alarm sound occurs.	Is the tap water turned off?	Wait for the tap water supply to be restored.
		Is the water supply valve open?	Turn on the water supply valve.
		Is the filter clogged?	Clean the filter.
	No alarm sound.	Is the water pressure too low? Is the water pressure setting on the remote control at the lowest level?	Press the button  to increase the water force.
		After sitting down, did you hear the prompt tone “beep”? Are you sitting within the effective range of the sensor?	Please sit on the seat and adjust to an appropriate sitting position.
Radar sensing doesn't work or doesn't work as expected.		Is the rader sensing too sensitive?	It is recommended to restart or turn off the radar sensing function. (Refer to page 29 for instructions.)

Warranty

Warranty Period: One year from the date of purchase.

What's Covered:

This product is warranted to be free of defects in materials and workmanship for one year. During the warranty period, if any defects or malfunctions occur, we will provide free replacement parts to ensure your satisfaction.

Note: This warranty is limited and does not cover damage caused by improper use, or maintenance.

Caution

• Prohibited Cleaners:

Do not use cleaners containing abrasive materials, ammonia, bleach, acids, waxes, alcohol, solvents, or any other products not recommended for chrome finishes. Doing so may damage the product and void the warranty.

• Proper Use and Maintenance:

Ensure the product is used and maintained according to the user manual. Failure to follow these instructions may result in damage not covered under warranty.

Function List

CONFIGURATION FUNCTION	Auto version
Rear cleaning	●
Front cleansing	●
Moving cleaning	●
Warm air drying	●
Seat ring heating	●
Nozzle auto cleaning	●
Auto flushing	●
Waterpressure adjustment	●
Water temp. adjustment	●
Seat temp. adjustment	●
Drying temp. adjustment	●
Night light	●
Foot kick flushing	●
Black-out flushing	●
Digital screen	●
Remote control flushing	●
Seat induction	●
Wireless remote control	●
Mute soft-closing	●
Self-cleaning glaze	●
Auto lid	●
Foot kick to open the seat	●
Intelligent ambient light	●
Foam Shield	●
Buit in tank	●

● Indicates this product contains the function.

Product Specification

Nominal voltage		120V 60Hz
Rated power		1200W
Length of power line		1.2M
Water pressure range		0.15MPa-0.75MPa(still)
Flushing water consumption		Below 4.0L
Cleaning water consumption		Below 0.4L/min
Unit cycle energy consumption		Below 0.03kW.h
Size of product		LWH:684*407*462mm
Weight of product		42 KGS
Cleaning machine	Water heating method	Thermal type
	Water-temp. control	4-level adjustable, Normal level, 1st-95°F, 2nd-100°F, 3rd-104°F, room temperature
	Max heating voltage	1600W
	Safety device	Temperature sensor, temperature switch
Seat heating	Heating power	40W
	Seat temp.	4-level adjustable, Normal level, 1st-95°F, 2nd-100°F, 3rd-104°F, room temperature
	Safety device	Temperature sensor, temperature fuse
Drying device	Heating power	270W
	Air temp. adjustment	4-level adjustable, Normal level, 1st-95°F, 2nd-113°F, 3rd-131°F, room temperature
	Safety device	Resettable thermal protector, temperature fuse
Executive standard		IEC 60335-1 IEC 60335-2-84

* Rated power : When this product works under the condition of circumstance temp. 23°C(±2°C), water-input pressure 0.24MPa(±0.02MPa), water-input temp. 15°C(±0.5°C), max cleaning flow (front cleansing at highest level), seat temp. highest level and water temp. highest level, test the average power of cleaning in a minute.

Acceptance Record

After the installation is complete, please test run the toilet and fill out the record sheet with the results:

Acceptance Item		Acceptance Result
Is the power outlet AC 120V±10%, load ≥1200W?		
Is the power outlet loose, or is the power connection in bad contact?		
Is each accessory securely connected without water leakage?		
Is the toilet's ambient light on?		
Is the bidet nozzle leaking?		
Is the "flip" function of the lid/seat working properly?		
Is the "rear cleansing" function working properly (including levels adjustment)?		
Is the "front cleansing" function working properly (including levels adjustment)?		
Is the "oscillating cleansing" function working properly (including levels adjustment)?		
Is the "water temperature" working properly (including temperature adjustment)?		
Is the "seat ring temperature" working properly (including temperature adjustment)?		
Is the "nozzle cleaning" function working properly?		
Is the remote control working properly?		
Is the manual and automatic flushing function working properly?		
Is the "drying" function working properly (including levels adjustment)?		
Remark:		
Retailer:	Installation personnel:	Acceptance tester:
		Date: