

Smart Light Bulb User Manual

A series of thin, curved lines that sweep from the top right corner towards the bottom left, creating a sense of motion and modern design.

Read this user manual carefully before you use the
appliance and save it for future referende.

A series of thin, vertical lines that span the width of the page at the bottom, providing a structured and modern look.

Quick Guide of Using Amazon Echo to Control Smart Devices

1. What you need to get started

Before using Echo to control your devices, make sure you meet the following conditions.

- ✓ A Wi-Fi which can access Amazon Service.
- ✓ An Echo device, including Echo、Echo Tap、Echo Dot or Echo Show.
- ✓ An Amazon account.
- ✓ Smart Life app and a related account.
- ✓ Smart devices.

2. Add devices in the Smart Life app (Refer to App Instruction)

You can skip this part if you've already added some devices to your Smart Life account, and in the meantime, the devices' names are easily recognized.

2.1 Download Smart Life app (Refer to App Instruction)

You can scan the QR code below to download the Smart Life app:



You can also search "Smart Life" in either App Store or Google Play to install the app.

2.2 Register a Smart life account and sign in to the app (Refer to App Instruction)

Open the Smart Life app, tap "Register" to register an account, then sign in to the app.

2.3 Add device and change device name (Refer to App Instruction)

Sign in with the Smart Life account, add the device, then change the device name to an easily recognized word or phrase, like "bedroom light".

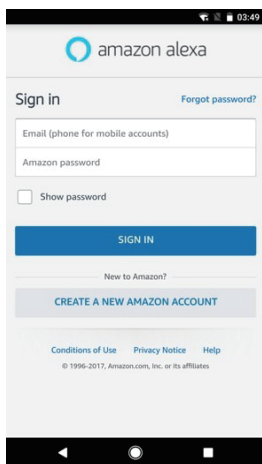
3. Set up Amazon Echo and Enable Smart Life Skill

Configuration needs Amazon Alexa app. Search "Amazon Alexa" in App Store or Google Play to install the app.

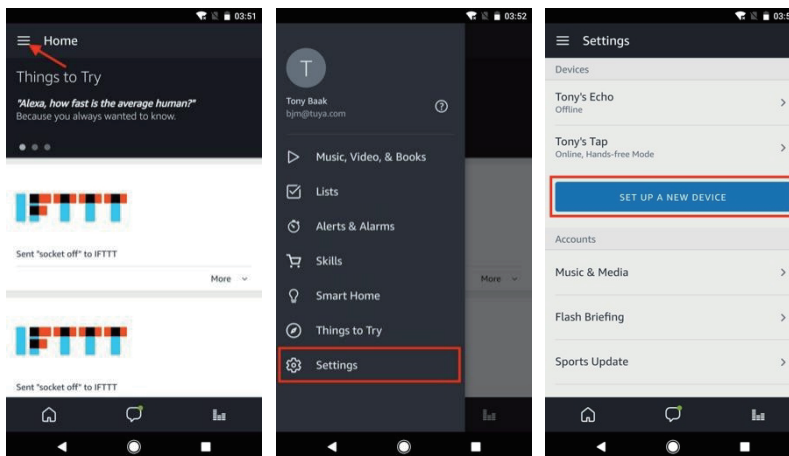
3.1 Set up Alexa with Amazon Echo

You can skip this part if your Echo is already set up.

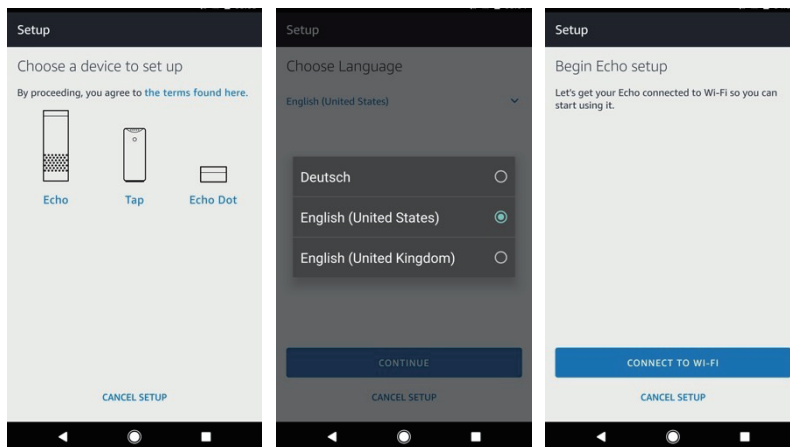
1. Make sure your Echo is energized.
2. Please make sure that your Wi-Fi network can access Amazon services.
3. Open the Alexa app
4. Enter your Amazon account and password, and tap "SIGN IN" to log in.



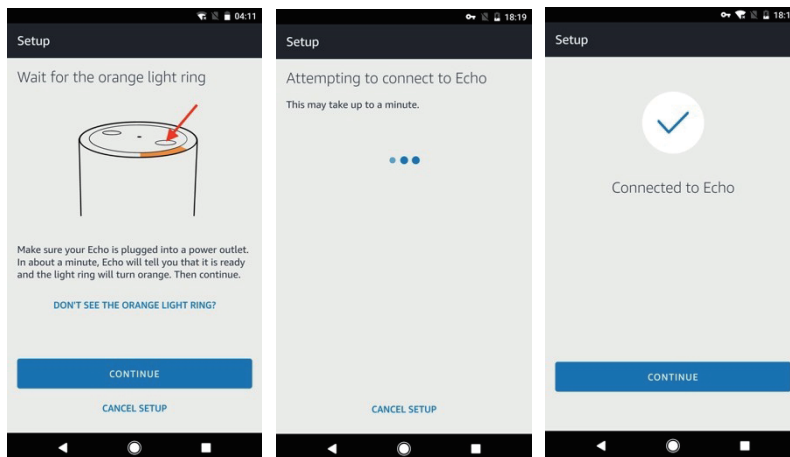
5. After logging in successfully, tap the menu in the upper left corner on the Home page, select "Settings", and tap "SET UP A NEW DEVICE" to set up the Echo device.



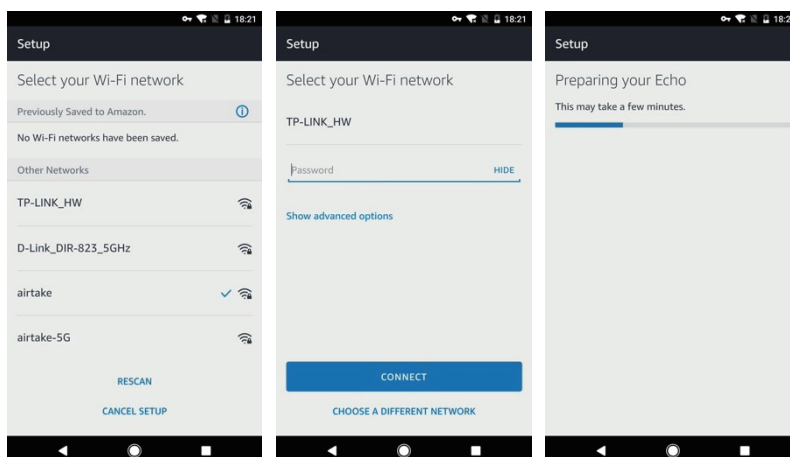
6. Select your Echo device type, select the language, and then tap "CONNECT TO WI-FI".



7. When the following page appears, press and hold the small dot button on the Echo device until the Echo light turns yellow. Then tap "CONTINUE", the phone will automatically connect to the Echo hotspot. Then tap "CONTINUE".



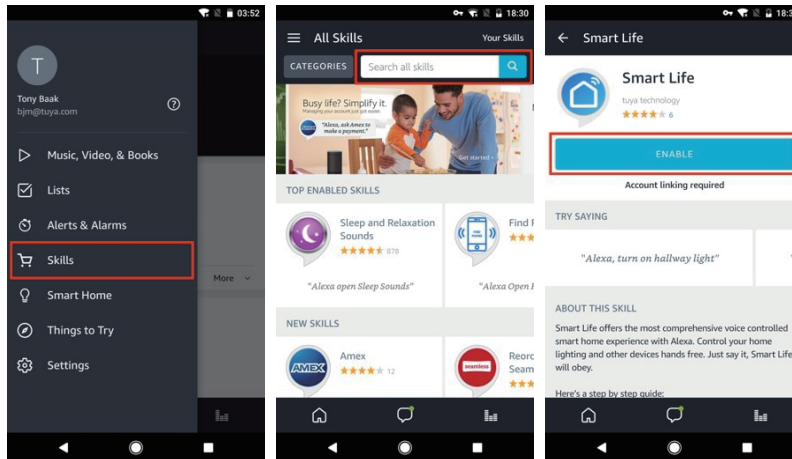
8. Choose a Wi-Fi network to connect the Echo. Enter the Wi-Fi password and tap "CONNECT". Echo will take a few minutes to try to connect to the Internet.



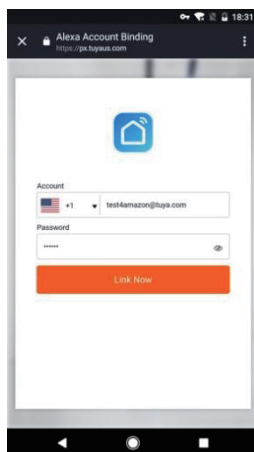
9. When the network connection is successful, tap "CONTINUE". An introduction video will appear. After the video is played, tap "CONTINUE" to jump to the Alexa Home page. The Echo configuration process ends.

3.2 Link Smart Life account in Alexa

1. Tap "Skills" in the menu and search for "Smart Life". Select "Smart Life" in the search results and tap "ENABLE" to enable skill.



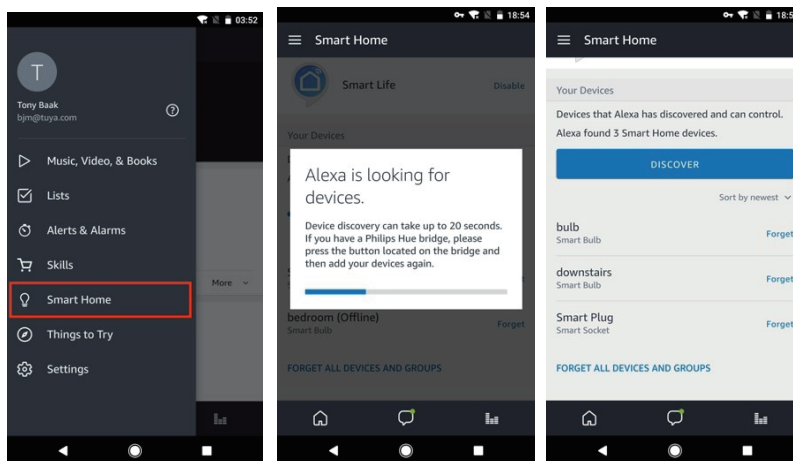
2. On the new page, enter your Smart Life app account and password, and correctly select the country where your account belongs, and then tap "Link Now" to bind your Smart Life account. The country, account number, and password must be consistent with those registered in 2.2. After the account is successfully bound, tap ✕ in the upper left corner to return to the Alexa app.



4. Control your smart devices through Echo

4.1 Find Devices

Before controlling the devices, Echo needs to discover the devices first. You can say to Echo: "Alexa, discover devices". Echo will scan the devices configured through the Smart Life app. After waiting for about 20 seconds, Echo will feedback on the scan result. You can also tap "DISCOVER" on the Smart Home page to discover the devices, and the discovered devices will be displayed in the list



Note: After changing the device name on the Smart Life app, Echo must rediscover the device, otherwise the device cannot be controlled.

4.2 Control the device by voice

Now you can control your smart devices through Echo. Take bedroom light as the example, the supported voice commands are as below:

- *Alexa, turn on/off bedroom light.*
- *Alexa, set bedroom light to 50 percent.*
- *Alexa, brighten/dim bedroom light.*
- *Alexa, set bedroom light to green.*
- *Alexa, set bedroom light to warm white.*
- *Alexa, set the air conditioner to 24°C.*