

X-DRIVER TW 2.0

FOR HUMAN CENTRIC LIGHTING SYSTEMS

X-DRIVER TW 2.0 was designed to control the whole collection of Domus Line *Tunable White* LED luminaires. The new collection is available with **three power outputs** (15W, 30W and 60W) in **multinet configuration** (110-240Vac) **ENEC, CB, EAC, UL and RCM** type-approved for export to all five continents. Four control modules operate two outputs for infrared and presence sensors, or convert the power supply into a wireless receiver for remote controls and, using Bluetooth technology or Wi-Fi, into a luminaire to control all Domus line LED luminaires by smartphone or voice control devices. X-DRIVER is a multi-net power supply (110-240Vac) for either 12Vdc or 24Vdc LED luminaires with a Plug&Play power cord available with standard international plugs.

X-DRIVER TW 2.0

Domus Line
design

All-in-one LED converter

Input:

110-240Vac

Output:

24Vdc

Power:

15W, 30W, 60W

Power cord:

Plug & Play

Connection system:

MOS



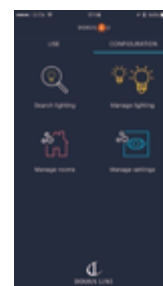
DOMUS4U

APP COMPATIBLE WITH X-DRIVER TO
MANAGE LIGHTS FROM SMARTPHONES.



DOMUS4U WI-FI

APP COMPATIBLE WITH X-DRIVER TO
MANAGE LIGHTS FROM SMARTPHONES.



Apple and the Apple logo are
trademarks of Apple Inc.



Google Play and the Google Play
logo are trademarks of Google Inc.

X-DRIVER Tunable White collection



EUROPE standard

USA - CANADA standard



UK standard



AU - NZ standard



CM1-XD TW _Control with PIR motion sensor and IR sensor
CM2-XD TW _ RF remote control
CM3-XD TW _ Bluetooth for app
CM4-XD TW _ Wi-Fi for App

CM1-XD TW CM2-XD TW CM3-XD TW CM4-XD TW



MOS6 distributor

TW 24Vdc LED luminaire

PIR sensor

IR sensor



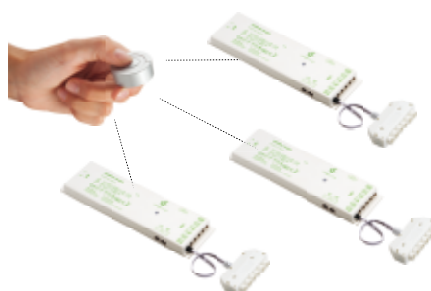
X-DRIVER TW + CM3-XDTW + APP DOMUS4U

This configuration allows control of up to 5 independent TW X-DRIVERS after downloading the **DOMUS4U** app.



CM4-XD TW _ the new Wi-Fi module

The new CM4-XD TW control module activates the wireless function, which allows X-DRIVER TW to interface with the home Wi-Fi network: so it will be possible also to control and adjust the lights via Amazon Echo voice-controlled devices. Only for X-DRIVER TW 30W and 60W.



X-DRIVER TW + CM2-XDTW + CALL ME

With this configuration, an unlimited number of TW X-DRIVERS can be combined with a single wireless remote control, provided they are no more than 15 metres away.



24Vdc

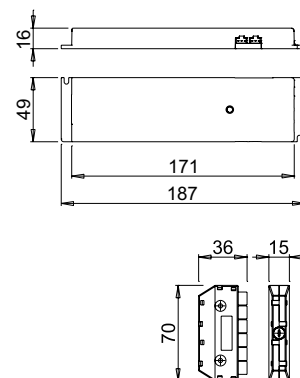
MOS

X-DRIVER TW 15/24

for 24Vdc LED TW



Code	0859601N/TW
Input	110-240Vac
Output	24Vdc
Power	15W
Input wiring	Plug&Play power cord with standard EU, BS, NEMA, Australia/New Zealand plug ¹
Output wiring	150mm and distributor MOS6 with 6 female connectors



24Vdc

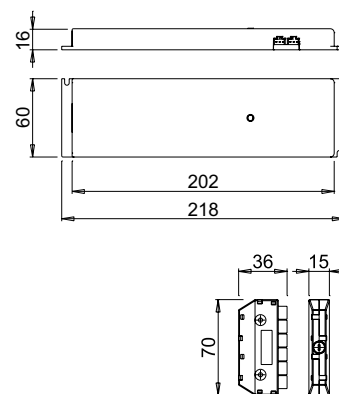
MOS

X-DRIVER TW 30/24

for 24Vdc LED TW



Code	0859701N/TW
Input	110-240Vac
Output	24Vdc
Power	30W
Input wiring	Plug&Play power cord with standard EU, BS, NEMA, Australia/New Zealand plug ¹
Output wiring	150mm and distributor MOS6 with 6 female connectors



24Vdc

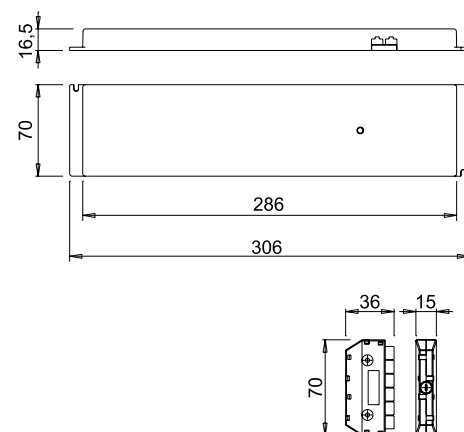
MOS

X-DRIVER TW 60/24 2.0

for 24Vdc LED TW



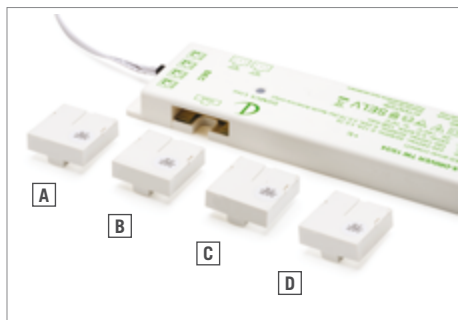
Code	0870001N/TW
Input	110-240Vac
Output	24Vdc
Power	60W
Input wiring	Plug&Play power cord with standard EU, BS, NEMA, Australia/New Zealand plug ¹
Output wiring	150mm and distributor MOS6 with 6 female connectors

**POWER CORDS**

for X-DRIVER collection

Type	Code	Standard
A	1159701/S	2000mm Plug&Play power cord with Europlug 2P and IEC C7 connector
A	1159703/S	2000mm Plug&Play power cord with Europlug 2P and IEC C7 connector
B	1159801/S	2000mm Plug&Play power cord with NEMA type A 2P plug and IEC C7 connector
C	1159901/S	2000mm Plug&Play power cord with BS 1363 3P plug and IEC C7 connector
D	1160001/S	2000mm Plug&Play power cord with SAA 3P plug and IEC C17 connector

¹ Sold separately



CONTROL MODULES

for X-DRIVER TW

Type	Code	Model	Application function
A	1756801/TW/S	CM1-XDTW	IR-XD infra-red sensors and PIR-XD passive infra-red sensors
B	1756901/TW/S	CM2-XDTW	2.4G wireless remotes, IR-XD and PIR-XD, IR WI-XD and PIR WI-XD
C	1757001/TW/S	CM3-XDTW	Bluetooth wireless remotes, IR-XD and PIR-XD
D	1781701/TW/S	CM4-XDTW	Wi-Fi remotes (only for X-DRIVER 30W and 60W)

A The CM1-XDTW control module activates the two outputs dedicated to infra-red IR-XD sensors and PIR-XD presence sensors, to be purchased separately.

B The CM2-XDTW control module transforms the power supply into a wireless receiver for remote controls, to be purchased separately.

C The CM3-XDTW control module activates the Bluetooth function that allows you to manage the lights from smartphones via the DOMUS4U App.

D The CM4-XDTW control module enables the wireless function, which allows X-DRIVER TW to interface with the wi-fi network. Only for X-DRIVER 30W and 60W.



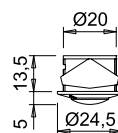
PIR-XD

passive infra-red sensor

Code	Model	Setup and function
1758901/S	PIR-XD DPS	2000mm on-off presence detector sensor

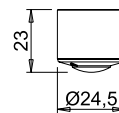


Recessed installation



Surface installation

with holder separately sold
code: 3055401



IR-XD

Infrared sensors

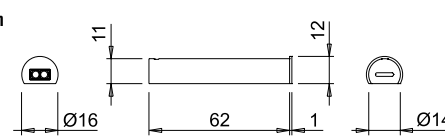
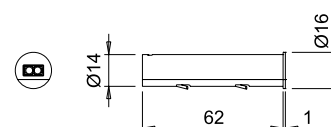
Code	Model	Setup and function
1759101/S	IR-XD LSW	Back-door proximity sensor with 2000mm cord
1756101/S	IR-XD DSW	On-off touchless dimmer switch with 2000mm cord



Recessed installation
IR-XD LSW



Surface installation
IR-XD LSW



REMOTE CONTROLS

for X-DRIVER TW

Type	Code	Model	Setup and function
A	17584_*/TW	CALL ME V17 TW	Single-channel dimmable TW remote control
B	1754701	RC1-TW	One-channel light intensity and light colour dimmer remote
C	1754901	RC3-TW	Multi-channel (up to 3) light colour and light intensity dimmer remote

Code	*Finish
01	white
03	black
10	aluminium
19	steel

