

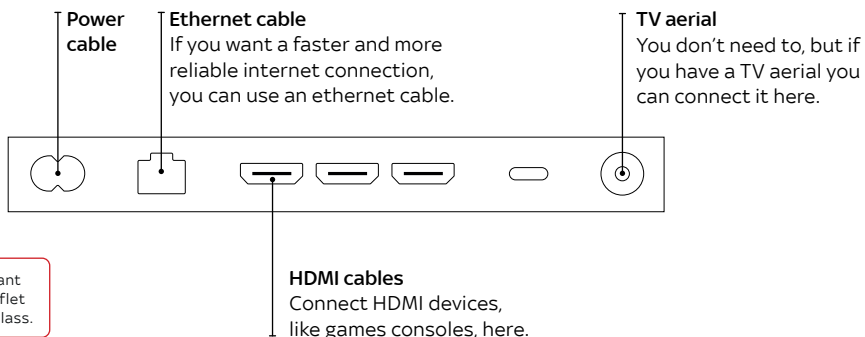
sky glass

1. Plug in

Cable management

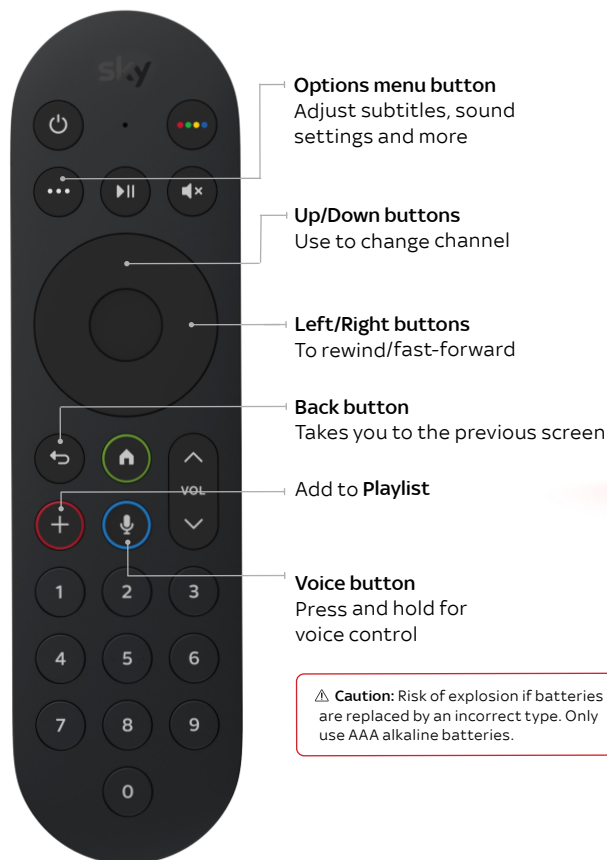
Feed the cables through the slot in the back of your TV stand when you plug them in.

Warning: Please read the 'Important safety and product information' leaflet before installing or using your Sky Glass.



2. Grab the remote

Pull the tab to start using your remote.



Caution: Risk of explosion if batteries are replaced by an incorrect type. Only use AAA alkaline batteries.

3. Enjoy

When the power light stops flashing, you should see the last few setup instructions on the screen.



Get the My Sky App

You can instantly find additional help or support whenever you need it in the My Sky app.



Wall mounting warnings and cautions

- You must use a professional installer to wall mount Sky Glass.
- You will need at least two people to carry out the installation.
- Check your fixings match the wall type to which you are mounting.

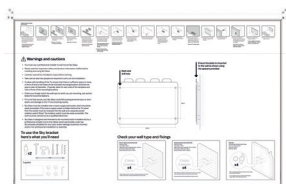
- If it's not fully secure, your Sky Glass could fall causing personal injury or even death, and damage to the TV and anything nearby.
- Sky Glass must be installed near a mains supply wall socket, which should be easily accessible. If the mains supply socket is hidden behind the TV panel then the socket will need to be recessed into the wall and a separate power isolation switch must be

fitted and be easily accessible. This work should be carried out by a qualified electrician.

- Sky Glass is designed and intended to be mounted and/or installed only by a professional installer and to the fullest extent permissible under law Sky excludes all liability for any injury and/or damage caused by incorrect and/or non-professional installation or assembly.

Wall mounting with Sky bracket

- Simply follow the step-by-step instructions on the wall mounting template provided.



TV weight without stand

- 43" 14kg
- 55" 23kg
- 65" 28kg

Additional kit you need

- Drill and drill bit
- Screwdriver or spanner
- Hammer
- Spirit level
- Appropriate wall fixings

Wall mounting with a 3rd party bracket

- Your professional installer should make sure the wall bracket, screws and spacers are suitable for the size, length and weight of your Sky Glass and compatible with the surface to which the Sky Glass is to be affixed.

- Your professional installer should also ensure that the surface to which the Sky Glass and any bracket and fixings are to be attached is suitable and can withstand its load. If the mounting and/or installation work is not carried out in the correct manner, there is a risk of injury and/or damage to your TV and/or other objects.

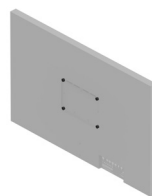
You may need to remove the stand from the back of your TV to access the VESA screw mounting holes.



1. Using the Allen key provided, undo and remove the four screws on the back cover.



2. Carefully lift the TV off the stand and place it screen up on a soft surface (you will need two people).



3. Remove the four white internal spacers from the back of the TV.

Follow your 3rd party wall mounting bracket setup instructions. Once in position, follow the steps overleaf to enjoy Sky Glass.



© Sky group of companies 2021.

Sky and Sky Glass are trade marks owned by the Sky group of companies.

This product is exclusively for use in the UK, Channel Islands, Isle of Man and Republic of Ireland and must only be used indoors.

SKYCLIMITED, GRANTWAY, TW75QD UNITED KINGDOM

PKG-001406-00 Rev.3

July 2021

X41G78SV1560A

