

T-Series Vertical Splice Kit, 32 mm, #10

物料号

RBT1091



T-Series splice kits contain the following: Sleeve, filler material kit (filler material, packing, pouring basin ceramic insert and disk, pouring basin ceramic guide tube), pouring basin and pouring basin crucible. Splice kits are ordered based on the quantity of splices needed. Sleeves and filler material kits are one-time use parts. Pouring basins and crucibles are prorated based on their anticipated life. Ordering splice kits simplifies ordering, reduces order errors and helps ensure proper sizing of components. Kits can be ordered with longer (extended) sleeves for use when the reinforcing steel deformation pattern or spacing does not meet the minimum product specifications.

功能

Simplifies ordering

Used to splice the same diameter bars

Available with extended sleeve lengths

产品属性

Sleeve: Standard Length

Rebar Size, Metric: 32 mm

Rebar Size, US: #10

Length 1 (L1): 362 mm

Length 2 (L2): 51 mm

Height 1 (H1): 660mm

Height 2 (H2): 451mm

Height 3 (H3): 210mm

Height 4 (H4): 197mm

Diameter (Ø): 127 mm

ADDITIONAL PRODUCT DETAILS

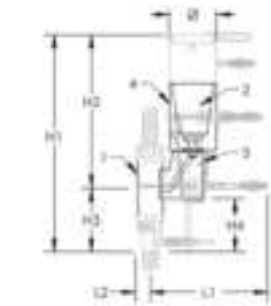
Prior to installation, please read and understand all of the detailed instructions and safety notices provided in the nVent LENTON Cadweld Rebar Splicing System instruction manual.

All dimensions are for reference only.

Components can also be purchased separately: (1) Sleeve, (2) Filler Material Kit (filler material, packing, pouring basin ceramic insert and disk, pouring basin ceramic guide tube), (3) Pouring Basin, and (4) Pouring Basin Crucible.

| Splice Kit Components | | | | | | | |
|-----------------------|-----------------|-------------------------|---------------------------------------|----------------------------------|------------|---------------|------------------------|
| 两通套件 | Filler Material | Packing (2 Required) | Pouring Basin Ceramic Insert and Disk | Pouring Basin Ceramic Guide Tube | 螺钉套 | Pouring Basin | Pouring Basin Crucible |
| RBT4101 | RBF40 | RBS354710 RBS35475 | RBS5037 | RBS5038 | RBT5101A | RBWS1500U | RBWS22774 |
| RBT5101 | RBF40 | RBS354710 RBS35475 | RBS5037 | RBS5038 | RBT5101A | RBWS1500U | RBWS22774 |
| RBT6101 | RBF50 | RBS35473.5 RBS35477 | RBS5037 | RBS5038 | RBT6101A | RBWS1500X | RBWS22774 |
| RBT7101 | RBF50 | RBS35474 RBS35478 | RBS5037 | RBS5038 | RBT7101A | RBWS1500A | RBWS22774 |
| RBT8101 | RBF55 | RBS354710 RBS35475 | RBS5037 | RBS5038 | RBT8101A | RBWS1500C | RBWS22774 |
| RBT9101 | RBF80 | RBS354711 RBS35475.5 | RBS5037 | RBS5038 | RBT9101A | RBWS1500D | RBWS22774 |
| RBT91011 | RBF90 | RBS354711 RBS35475.5 | RBS5037 | RBS5038 | RBT91011A | RBWS1499D | RBWS22775 |
| RBT91012 | RBF105 | RBS354711 RBS35475.5 | RBS5037 | RBS5038 | RBT91012A | RBWS1500D | RBWS22775 |
| RBT1091 | RBF90 | RBS354712 RBS35476 | RBS5037 | RBS5038 | RBT1091A | RBWS1500E | RBWS22775 |
| RBT10911 | RBF105 | RBS354712 RBS35476 | RBS5037 | RBS5038 | RBT10911A | RBWS1500E | RBWS22775 |
| RBT11101 | RBF105 | RBS354712 RBS35476 | RBS5037 | RBS5038 | RBT11101A | RBWS1499F | RBWS22775 |
| RBT111011 | RBF125 | RBS354712 RBS35476 | RBS5037 | RBS5038 | RBT111011A | RBWS1481F | RBWS22776 |
| RBT14101 | RBF195 | RBS354715 RBS35477 | RBS5037 | RBS5039 | RBT14101A | RBWS1481J | RBWS22776 |
| RBT1891 | RBF270 | RBS354720 RBS35479 | RBS5037 | RBS5039 | RBT1891A | RBWS1482M | RBWS22777 |

图表



警告

应仅根据 nVent 的产品说明书与培训材料安装并使用 nVent 的产品。可访问 www.nvent.com 获取说明书，或者向您的 nVent 客服代表索取。错误安装、使用不当、滥用或未能完全遵守 nVent 的说明与警告，可能会造成产品故障、财产损失、严重的人身伤害及死亡和/或使得保修服务无效。

| 北美 | 欧洲 | 欧洲 | APAC |
|----------------------|-----------------|------------------|----------------------|
| +1.800.753.9221 | Netherlands: | Germany: | Shanghai: |
| Option 1 - Customer | +31 800-0200135 | 800 1890272 | + 86 21 2412 1618/19 |
| Care | France: | Other Countries: | Sydney: |
| Option 2 - Technical | +33 800 901 793 | +31 13 5835404 | +61 2 9751 8500 |
| Support | | | |



Our powerful portfolio of brands:

CADDY ERICO HOFFMAN ILSCO SCHROFF TRACHTE