

X1 PRO T 2

Stepper Micropump

Quick Start Guide

A2 2022/06/16



Kamoer Fluid Tech (Shanghai) Co., Ltd.

www.kamoer.com

FCC warning

This device complies with Part 15 of the FCC Rules. Operation is subject to the following two conditions: (1) this device may not cause harmful interference, and
(2) this device must accept any interference received, including interference that may cause undesired operation

This device has been tested and found to comply with the limits for a Class B digital device, pursuant to Part 15 of the FCC Rules. These limits are designed to provide reasonable protection against harmful interference in a residential installation. This device generates, uses and can radiate radio frequency energy and, if not installed and used in accordance with the instructions, may cause harmful interference to radio communications.

However, there is no guarantee that interference will not occur in a particular installation. If this device does cause harmful interference to radio or television reception, which can be determined by turning the device off and on, the user is encouraged to try to correct the interference by one or more of the following measures:

- Reorient or relocate the receiving antenna.
- Increase the separation between the device and receiver.
- Connect the device into an outlet on a circuit different from that to which the receiver is connected.
- Consult the dealer or an experienced radio/TV technician for help

Changes or modifications not expressly approved by the party responsible for compliance could void the user's authority to operate the equipment

FCC Radiation Exposure Statement The antennas used for this transmitter must be installed to provide a separation distance of at least 20 cm from all persons and must not be co-located for operating in conjunction with any other antenna or transmitter.

Warranty service

1. Warranty Conditions

The warranty service is only valid for users who have correctly installed, used and maintained in accordance with the manual, and all man-made faults or damages are not covered by the warranty. Please keep the proof of purchase in a safe place so that you can obtain satisfactory after-sales service in a timely manner.

2. Warranty coverage

Within one year from the date of purchase, if there is any damage caused by the manufacturing process or components, the company will provide free warranty service. The free maintenance service provided during the warranty period includes free repair, free replacement of faulty spare parts, and replacement of products that cannot be repaired with products of the same model. Free service does not include shipping costs incurred for product repairs.

3. Non-warranty coverage

The following factors are not covered by the free warranty, and customer repairs are subject to fees.

- 1) Product appearance (please confirm when purchasing);
- 2) Improper use, maintenance, or storage (please use, maintain and store correctly according to the user manual);
- 3) Access to inappropriate power supply;
- 4) Damage to the components caused by the short circuit of the circuit board caused by the entry of various insects into the machine;
- 5) Losses caused by accidents;
- 6) Use inappropriate spare parts (non-company spare parts are not applicable);
- 7) Persons not authorized by the company negligently handle, modify or repair (please do not dismantle or repair without authorization);
- 8) Failure or damage caused by use outside the applicable occasion;
- 9) Damage caused by force majeure, etc.;
- 10) Consumable and wearing parts (pump tube, connector, connecting tube, etc.);
- 11) The warranty period has expired.

Know X1 PRO T2

X1 PRO T2 is remotely controlled via a mobile phone App, using a long-life stepper motor, which can be used as a dosing pump or a calcium reaction pump; When used as a dosing pump, it can flexibly and accurately replenish various elements required for the growth of marine organisms, such as calcium, magnesium, KH enhancer, trace elements, etc., to the marine biological tank. Through automatic addition, the workload of manual addition can be greatly reduced, and errors such as missed addition, excessive addition or insufficient addition caused by manual addition can also be avoided. When used as a calcium reaction pump, it can provide a stable flow of water to the calcium reactor.



Download the app

1. Scan the QR Code below to find the application download with the following icon.



iOS



Android

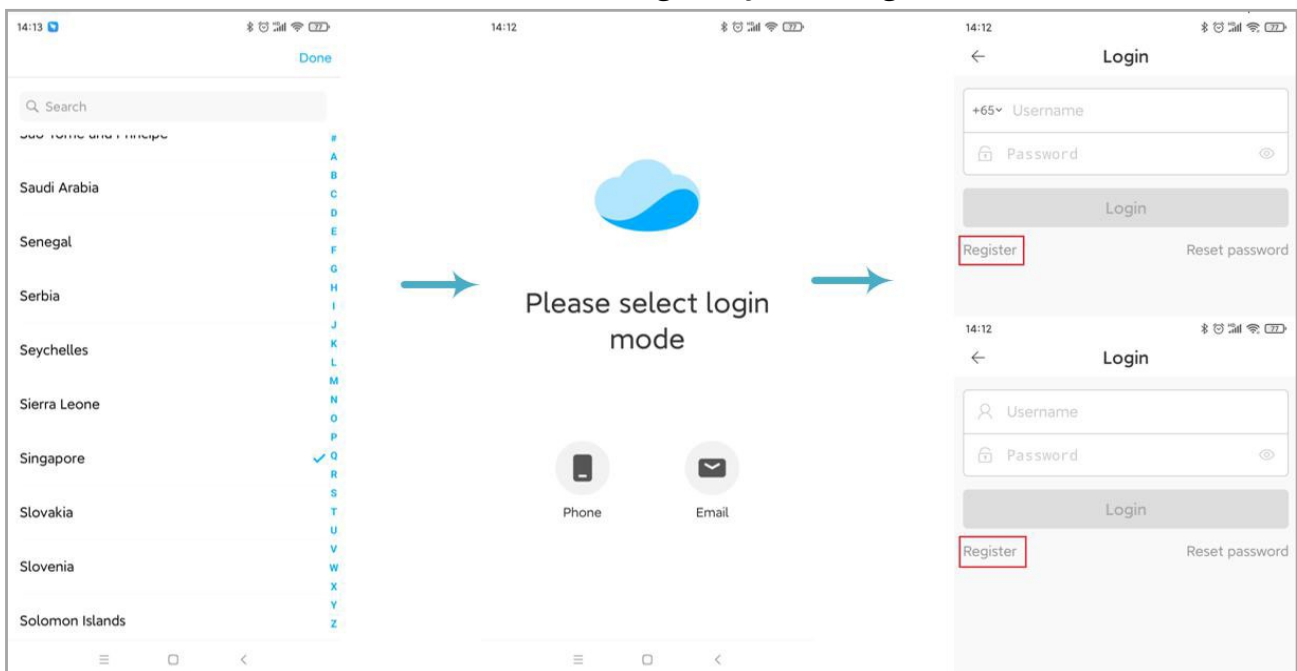
2. Apple users enter the App Store application store, Android users enter Google Play application store, search for "Kamoer Remote", find the application download corresponding to the icon.

Note: This App supports Apple devices with iOS9.1 and above, and Android devices with Android 4.4 and above.

Register account

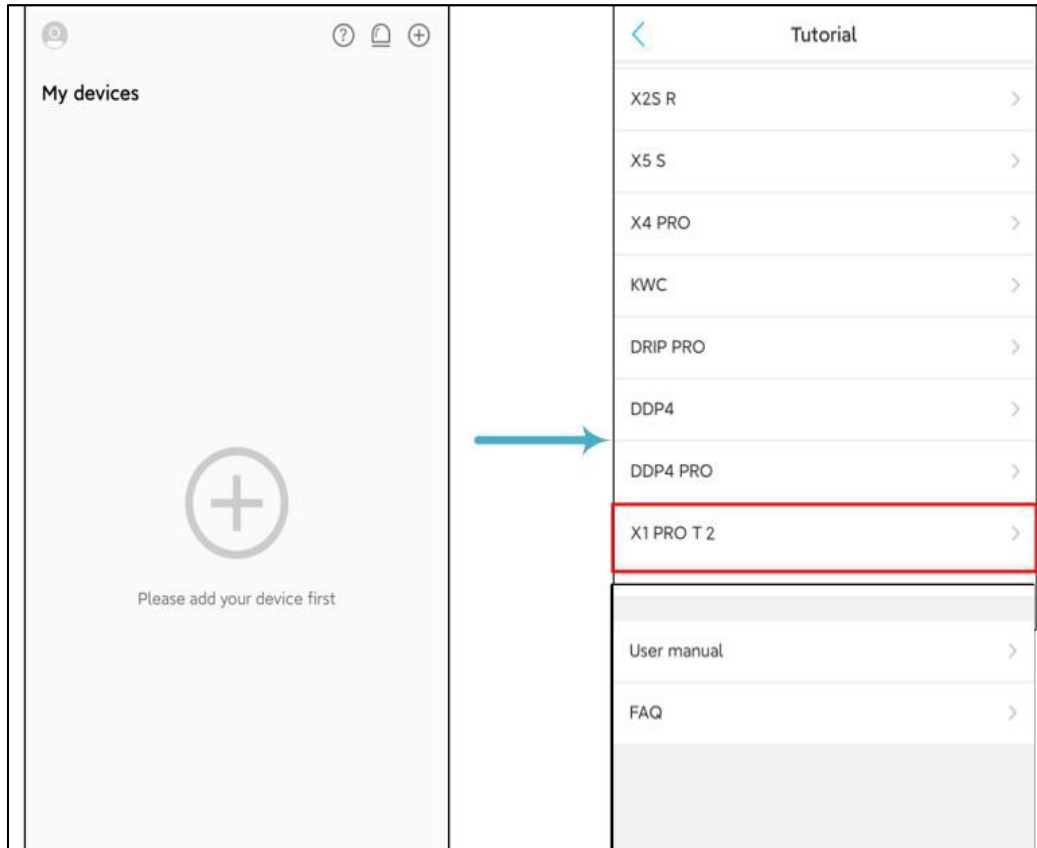
Open the App, select the phone registration or email registration method, and follow the App guidelines to complete the account registration.

Note: region selection is very important, and selection errors will cause network allocation. It is recommended to select the region by scanning the device QR code.



View the Tutorial

On the device list page, click the "?" icon in the upper right corner to enter the "Tutorial" page, and select "X1 PRO T2" to view the tutorial. The tutorial includes the user manual and frequently asked questions.



Display Description



a. Work Mode: indicates the functional position of the interface, and the operating mode indicates that the machine is working on the home page

b. Work Status Indication: In the non-lock screen state, press the button, the pump starts to work, at this point the middle of the screen shows the "in operation..." copy, press the button while the pump is working, the pump stops.

c. Network Connection Status Indication

NET O: Indicates that the network is normal, at which point the device can be operated via an App connection

NET S: Indicates that the device is in the distribution network state, need the user network to complete before the normal networking

NET F1: Indicates that the device failed to connect to the router

NET F2: Indicates that the device successfully connected to the router, but failed to connect to the cloud

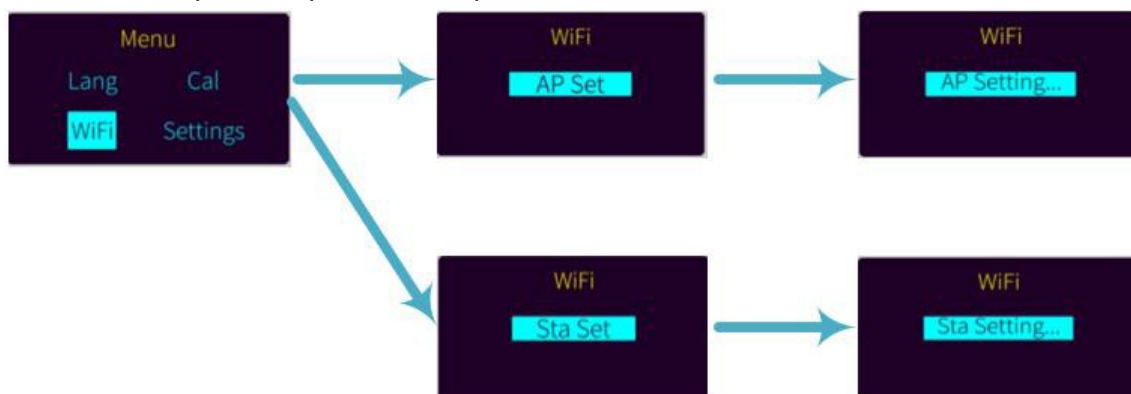
d. Flow Display: Shows the flow rate of the pump, which can be adjusted by adjusting the knob while the pump is running.

e. Lock Screen Status: the user does not operate the device for a long time, the device screen will enter the screen protection state, screen protection state will show an L letter on the screen, from top to bottom line dynamic display, to use the knob to operate the device, you need to unlock the screen to operate, press the knob to unlock the screen.

f. App Control: The interface displayed when the phone App controls, when the interface is in the App control, the knob cannot control the device.

Connect your X1 PRO T 2 to the Cloud

This device supports knob operation, also supports mobile app remote control, if you want to control through the mobile phone app, you need to first configure the device to connect to the Wi-Fi network, the specific operation steps are as follows:



1. The wireless router has been connected to the Internet, and the mobile phone is connected to the 2.4G Wi-Fi hotspot of the wireless router (the device does not support 5G Wi-Fi and cannot use 5G Wi-Fi hotspot).
2. Open the Kamoer Remote App, log in with the registered account, click the "+" icon in the upper right corner, select "Add device", and select "X1 PRO T 2" in the list of supported devices.
3. After inputting the Wi-Fi password, select the device as shown in the figure above by operating the device knob to make the device enter the network configuration state, and complete the network configuration according to the interface prompt.
4. If select configure network by router, the device will display Sta Setting, and switch to By Router in the upper right corner of the corresponding mobile App interface. Click the "'Sta Setting...' is on display" button to enter the configure network by router. Wait for the network configuration to complete.
5. If you select configure network by AP, the device will display AP Setting, select Connect by AP in the App interface of the corresponding mobile phone, and click the "'AP Setting...' is on display" button to enter configure network by AP. Complete the network configuration according to the interface prompt.
6. After the connection is successful, the App will prompt that the connection is successful. At this time, the device will return to the home page, and net o will be displayed in the upper right corner, which means that the device has been connected to the cloud. At this time, the user has also completed the binding of App and device.

Bind X1 PRO T 2

There are two ways for a user app to bind a device, the first way is to bind the device through connect to the network again, and the second way is that the device is already connected to the cloud via a wireless router, where the phone can be connected to the wireless router, the app will display the locally available device, the user can be scanned out of the list of devices, Directly click on the corresponding "binding" button to bind the device.

Unbind

Press the corresponding device icon on the device list page, pop up the “Remove” icon at the bottom, and click the “Remove” icon to unbind

Note

- Please use the appliance to bring your own power adapter and work in a specified work environment.
- This product only supports 2.4G Wi-Fi, does not support 5G Wi-Fi.
- The device should be placed in a reasonable position, the connecting pipe of the liquid should be as short as possible, and the connecting pipe of the liquid should be suspended above the aquarium.
- Please carefully check whether the connection direction of the water inlet and outlet is correct, and it must not be reversed

Technical Parameters

Dimensions (L*W *H)	75*70*110mm
Weight	534g (power adapter is not included)
Power Adapter	Input: 100VAC -240VAC Output: DC24V 1.9A
Pump Parameter	Pump Head: 3 rotor KPAS100 Flow: <=110ml/min Precision: <±2%
Interface	Adjustment knob/Wi-Fi
Working Environment	Temperatures: 0 - 70 ° C, Humidity: 10% - 90% (non-condensation)
Storage Environment	Temperature: -20°C – 85°C Humidity: 10% - 90% (non-condensation)

Packing List

No	Name	Model	Unit	Qty
01	Controller	X1 PRO T 2	pcs	1
02	Power adapter body	DC24V 1.9A	pcs	1
03	Power adapter plug	<input type="checkbox"/> US <input type="checkbox"/> UK <input type="checkbox"/> EU <input type="checkbox"/> AU	pcs	1
04	Silicone tube	3.2x6.4mm	meter	2
05	Silicone tube	6.4x9.6mm	meter	1
06	Grease	FT-2;10g	pcs	1
07	Plumbing connectors	1/8 to 1/4 straight through	pcs	2
08	Quick Start Guide		pcs	1



Kamoer Fluid Tech (Shanghai) Co., Ltd.

Addr: Building 4, No.79 Xiangjing Road, Songjiang District, Shanghai

website: www.kamoer.com

Kamoer is registered trademark of Kamoer Fluid Tech (Shanghai) Co., Ltd. We reserve the right to improve or alter appearance and technical specifications without notice.