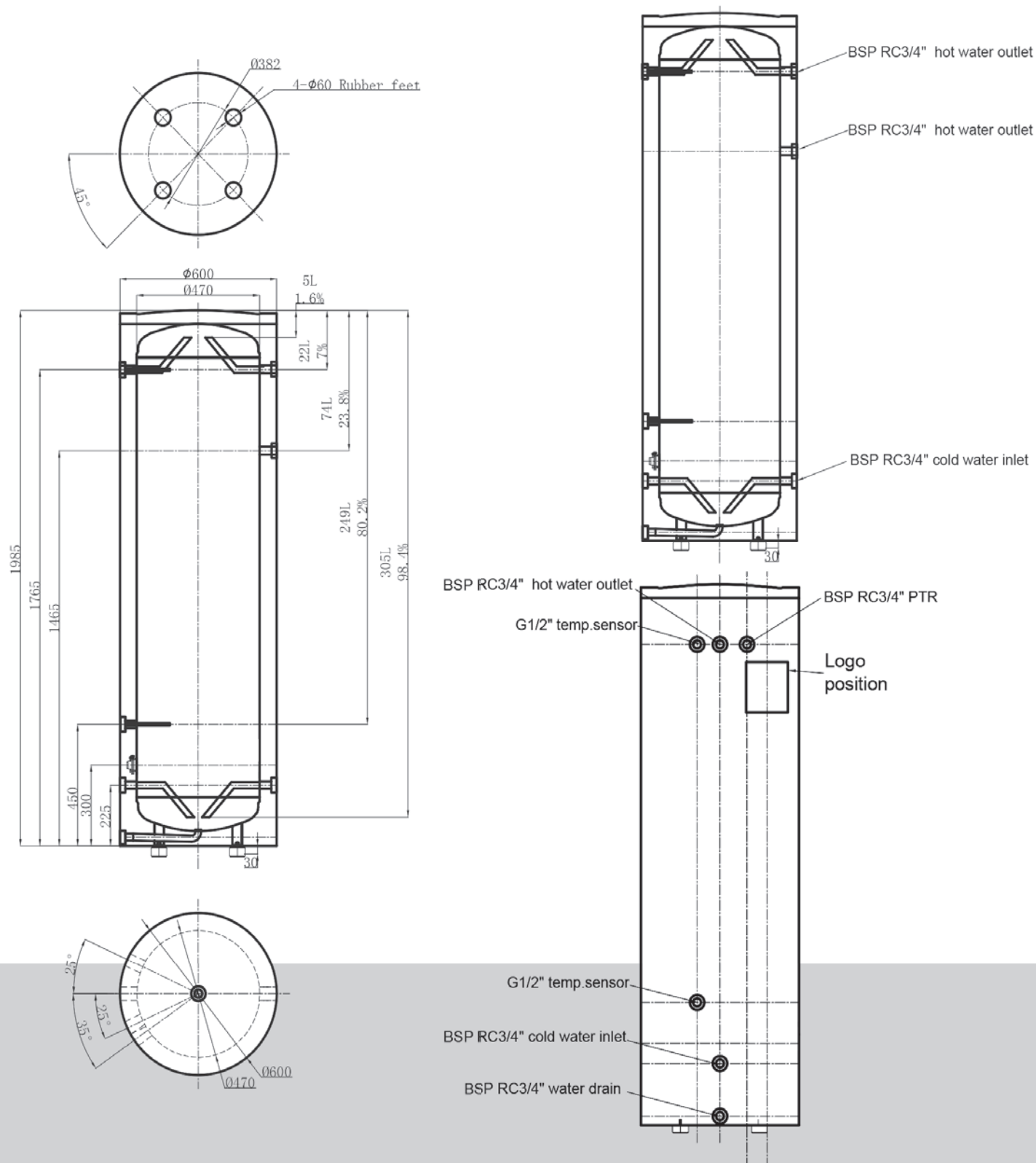




DUPLEX TANK SPECIFICATIONS
CO2 HEAT PUMP HOT WATER SYSTEM WITH
315L DUPLEX STAINLESS STEEL TANK

DIMENSIONS



DOUBLE THE STRENGTH BUILT TO LAST



DUPLEX STAINLESS STEEL TANKS

Strength and durability,
built to last.



20+ YEARS OF INNOVATION

Trusted sustainable hot water expertise.



RECLAIM ENERGY CO₂ HEAT PUMP

Efficient. Reliable.
Proven performance.



PROUDLY AUSTRALIAN

Designed by renewable energy leaders.



TECHNICAL SPECIFICATIONS

SYSTEM CODES:	REHP-CO2-315DX-V2 REHP-KY-CO2-315DX
TANK ID:	RE-DXO-315
TANK CAPACITY:	315L
TANK SIZE:	600mm x 1985mm
WORKING PRESSURE:	700kPa
CONNECTIONS:	BSP RC ¾"

NET WEIGHT:	65kg
MAXIMUM WATER TEMP:	90°C
DIAMETER INNER TANK:	470mm
DIAMETER OUTER TANK:	600mm
TANK OUTER CASING:	Duplex Stainless Steel
TANK INNER:	2205 Duplex Stainless Steel
FOAM INSULATION:	65mm Polyurethane

Why Reclaim Energy?

At Reclaim Energy, we believe in the goal of a sustainable lifestyle and the potential for living off-grid. With over 20 year's experience, we are passionate about the potential of energy efficient and environmentally-friendly hot water solutions, tailored to Australian requirements.

Through our commitment to product innovation and next generation technology, we truly believe we have designed a hot water system that is one of the most energy efficient and flexible solutions available in Australia today.

Our people are here for you.

We have high quality resellers all around Australia, so talk to one of our specialists and start saving today.

YOUR RECLAIM ENERGY DEALER



SCAN QR CODE
FIND OUT MORE

1300 383 815

HELLO@RECLAIMENERGY.COM.AU

RECLAIMENERGY.COM.AU

facebook.com/CO2HeatPump 

instagram.com/reclaimenergy 

linkedin.com/company/reclaim-energy 



RECLAIM
E N E R G Y