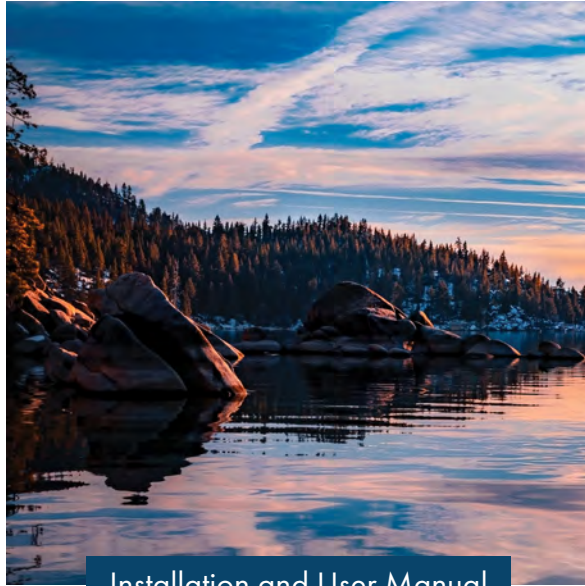


ZLINE

ATTAINABLE **LUXURY**®



Installation and User Manual

RUBICON BATH FAUCETS & PLUMBING RBCN1-BF, RBCN2-BF, RBCN3-BF, & RBCN1-PDO MODELS

zlinekitchen.com



ZLINE Kitchen and Bath provides Attainable Luxury, where the kitchen and bath of your dreams is never out of reach. Through our unique designs and unparalleled quality, we're dedicated to providing you an elevated experience in the heart of your home. With an endless selection of features and finishes, our inspiration is your reality.

ZLINE
ATTAINABLE LUXURY®



ZLINE is fueled by a passion for innovation; A relentless pursuit of bringing the highest end luxury designs and professional features into everyone's homes.

Because we continually strive to improve our products, we may change specifications and designs without prior notice.

Scan the QR code to view the most up-to-date version of the Installation Manual and User Manual.


 **WARNING:** This product can expose you to chemicals including nickel, which is known to the State of California to cause cancer. For more information, go to www.P65Warnings.ca.gov.

TABLE OF CONTENTS

BEFORE INSTALLATION..... 1

 Before Installation 1

 Operating Conditions 1

 Installation Preparation 1

 Parts Included 1

 Tools Needed 2

INSTALLATION 3

 RBCN1-BF 3

 RBCN2-BF 6

 RBCN3-BF 9

 RBCN1-PDO 13

CARE AND MAINTENANCE..... 15

TROUBLESHOOTING..... 16

WARRANTY..... 17

BEFORE INSTALLATION

BEFORE INSTALLATION

- Make sure that the cold and hot water lines are turned off.
- Wrap all threaded connections with plumber's tape. Always wrap in a clockwise direction.
- Cover your drain to avoid losing parts.
- Do not disassemble the main faucet body, as it has been installed and commissioned correctly and precisely before delivery to the factory.
- To keep the faucet from jamming, flush the water pipe before installation.

OPERATING CONDITIONS

- **Working pressure:** 20–125 psi / 0.1–0.9 MPa. *
- **Water temperature:** 50 °F–149 °F / 10 °C–65 °C
- **Water supply line length:**
 - RBCN1-BF and RBCN2-BF: 15 15/16" (404 mm)
 - RBCN3-BF: 22" (559 mm)

* Follow local building codes.

INSTALLATION PREPARATION

1. Shut off the water and let the water in the current faucet drain.
 2. Loosen the hardware that keeps the current faucet in place. Remove faucet.
- If soldering the water connections when installing the faucet, remove the O-rings, cartridges, and washers before applying any heat.
 - Protect your eyes when cutting or soldering.
 - Do not over tighten screws/nuts. Finger tighten, then use a wrench/Phillips head screwdriver to tighten the fixing screw/nut until snug.

PARTS INCLUDED

- Aerator wrench
- Allen wrench
- Faucet components

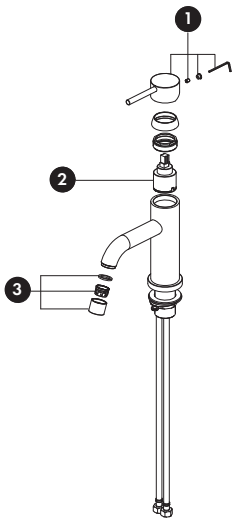
BEFORE INSTALLATION

TOOLS NEEDED

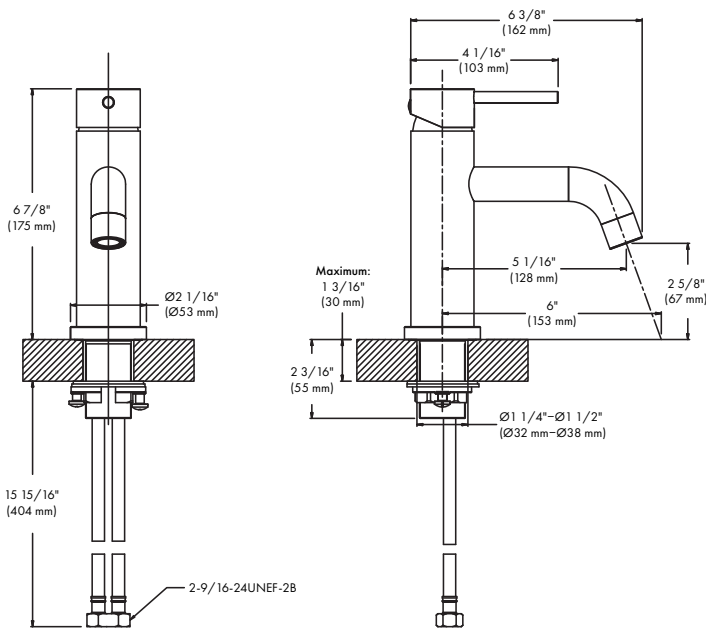
- Drill
- Flat head/Phillips head screwdriver
- Pencil
- Plumber's tape/thread sealant
- Wrench

INSTALLATION

RBCN1-BF

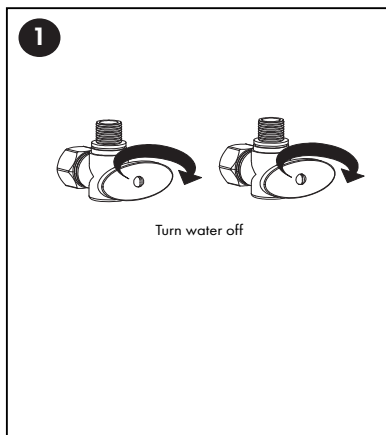


1. Handle assembly
2. Cartridge
3. Aerator assembly

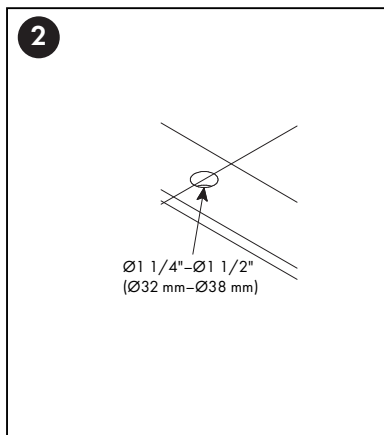


INSTALLATION

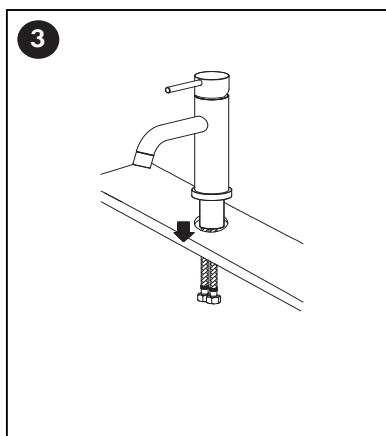
RBCN1-BF



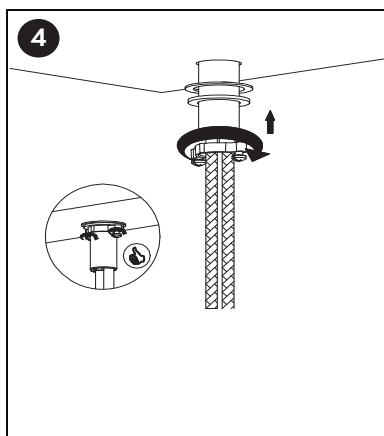
Turn off the hot and cold water at the supply valves.



Use a pencil to mark where the mounting hole will be drilled.



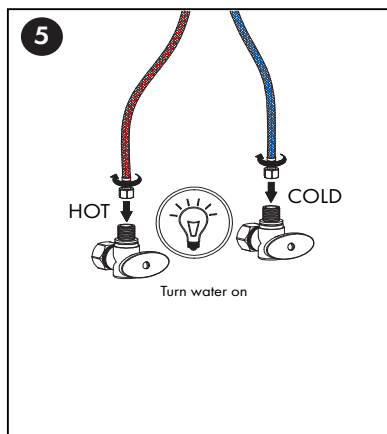
Remove the mounting nut and seals, then insert the faucet and water lines through the drilled hole.



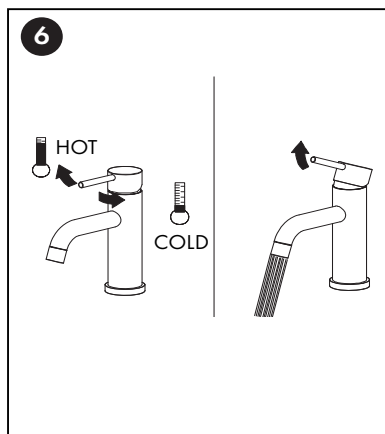
Insert the water lines through the sealing rings and mounting bracket. Turn the mounting nut clockwise to tighten it against the seals and countertop. Then, use a screwdriver to tighten the screws in the mounting bracket to secure it in place. Overtightening may cause damage to the counter or faucet.

INSTALLATION

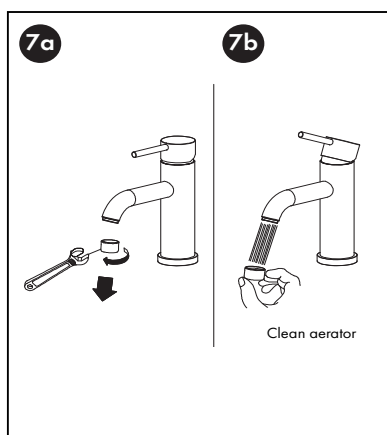
RBCN1-BF



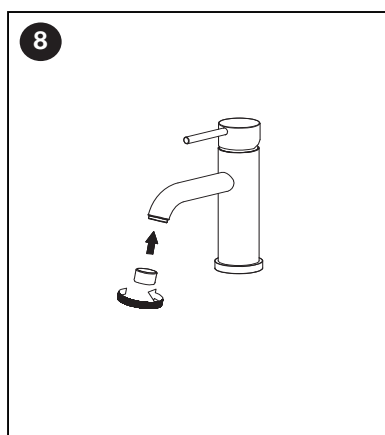
Firmly hand tighten the hose to the corresponding valve and add a quarter-turn using the proper wrench. Tighten more if needed. Be sure to use plumber's tape or thread sealant to prevent leaks.



Turn on the faucet. Check for leaks and to ensure that turning the handle to the left and right provides hot and cold water respectively.



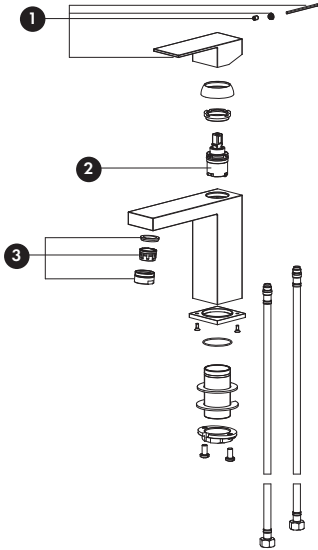
Use an aerator wrench to remove the aerator (see figure a). Flush the aerator with water to remove any debris (see figure b).



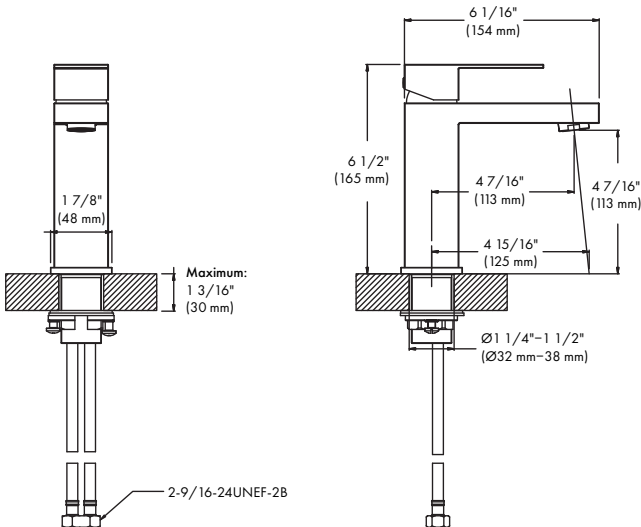
Place the aerator back on the faucet. Use a wrench to tighten the aerator and prevent leaks. Overtightening may cause damage to the faucet.

INSTALLATION

RBCN2-BF

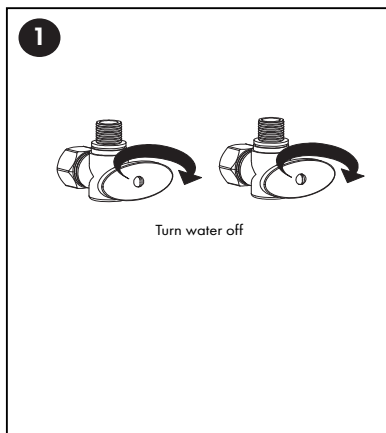


- 1. Handle assembly
- 2. Cartridge
- 3. Aerator assembly

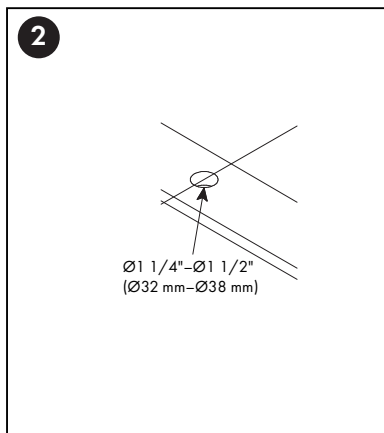


INSTALLATION

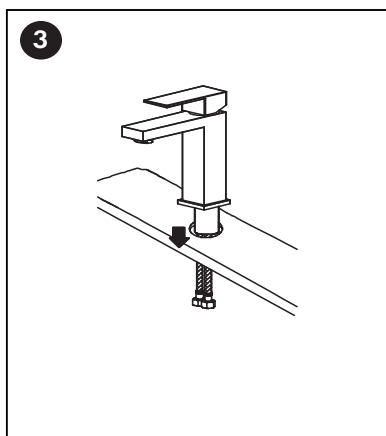
RBCN2-BF



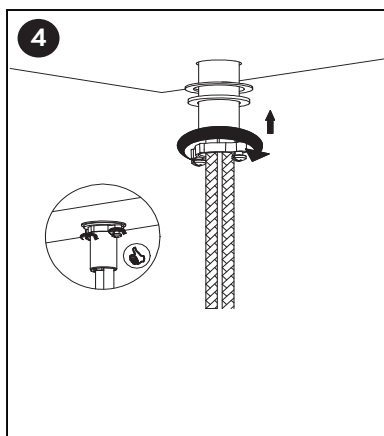
Turn off the hot and cold water at the supply valves.



Use a pencil to mark where the mounting hole will be drilled.



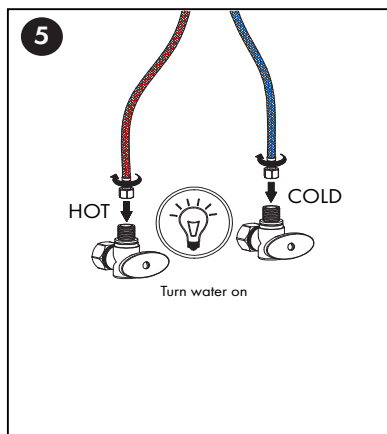
Remove the mounting nut and seals, then insert the faucet and water lines through the drilled hole.



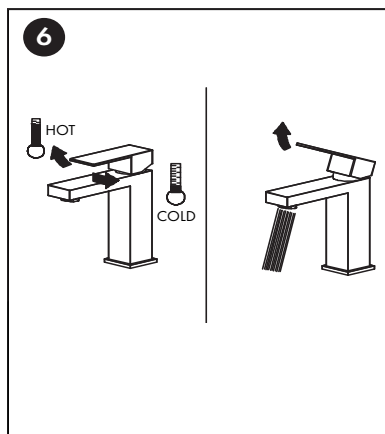
Insert the water lines through the sealing rings and mounting bracket. Turn the mounting nut clockwise to tighten it against the seals and countertop. Then, use a screwdriver to tighten the screws in the mounting bracket to secure it in place. Overtightening may cause damage to the counter or faucet.

INSTALLATION

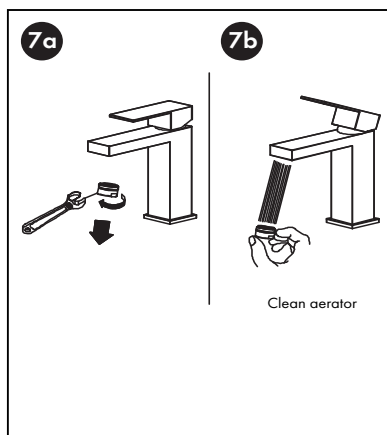
RBCN2-BF



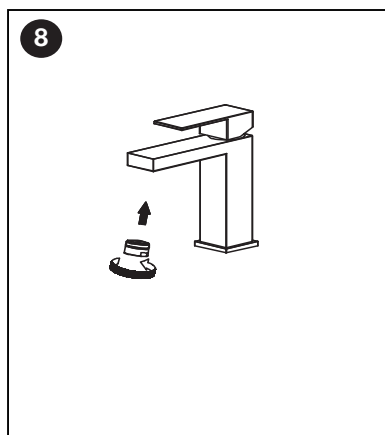
Firmly hand tighten the hose to the corresponding valve and add a quarter-turn using the proper wrench. Tighten more if needed. Be sure to use plumber's tape or thread sealant to prevent leaks.



Turn on the faucet. Check for leaks and to ensure that turning the handle to the left and right provides hot and cold water respectively.



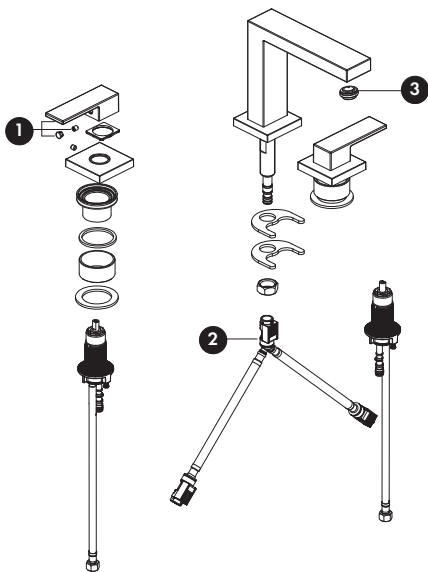
Use an aerator wrench to remove the aerator (see figure a). Flush the aerator with water to remove any debris (see figure b).



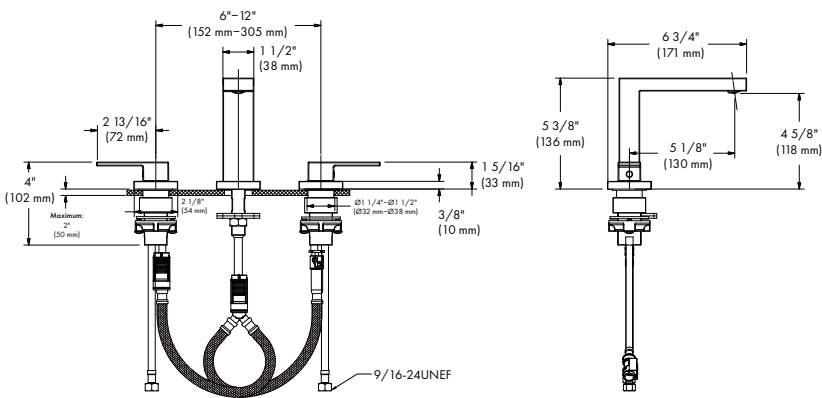
Place the aerator back on the faucet. Use a wrench to tighten the aerator and prevent leaks. Overtightening may cause damage to the faucet.

INSTALLATION

RBCN3-BF

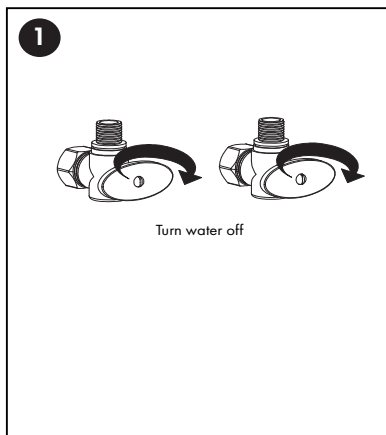


- 1. Handle assembly and shank (2)
- 2. Connection hose
- 3. Aerator

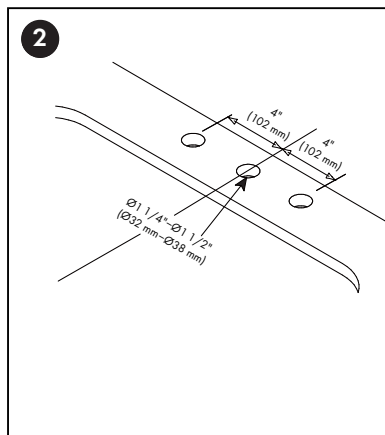


INSTALLATION

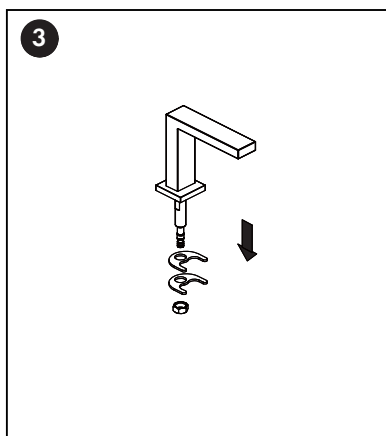
RBCN3-BF



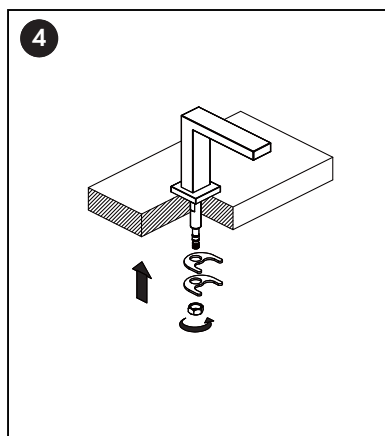
Turn off the hot and cold water at the supply valves.



Use a pencil to mark where the mounting holes will need to be drilled.



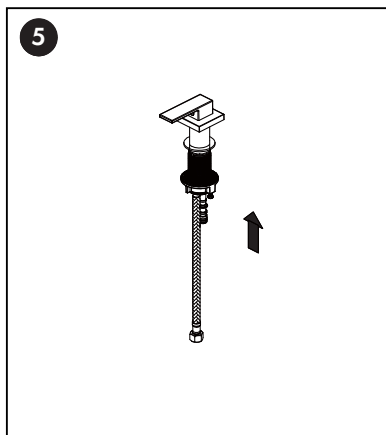
Remove the mounting bracket, nut, and seals from the faucet. Insert the faucet into the mounting hole.



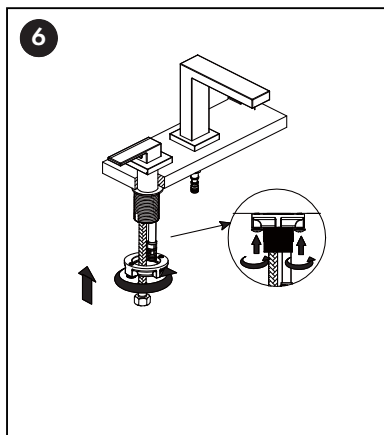
Reinstall the seal, then mounting bracket, then the nut. Turn the nut clockwise to tighten it and secure the faucet to the counter. Overtightening may cause damage to the counter or faucet.

INSTALLATION

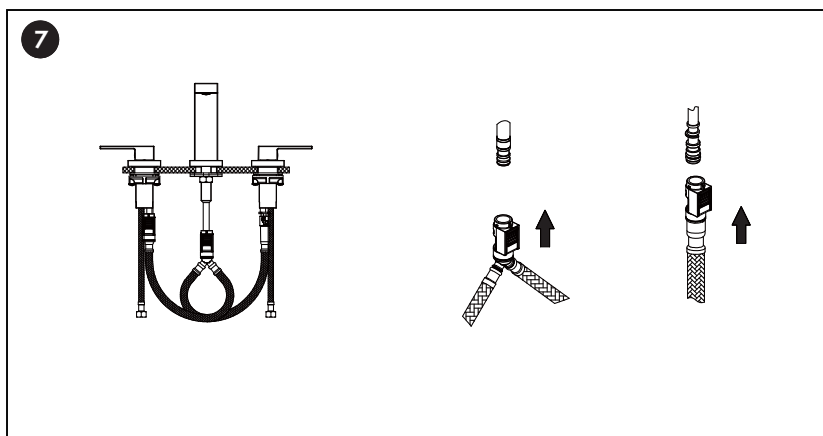
RBCN3-BF



Remove the mounting brackets and seals from the handles, then insert the handles into the mounting holes.



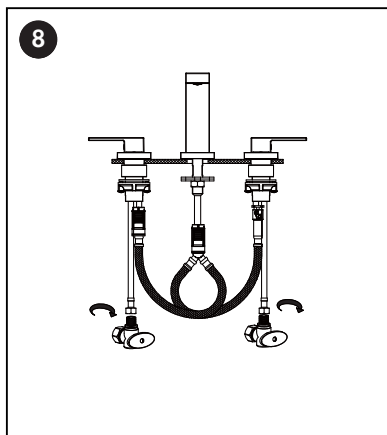
Reinstall the seals, then the mounting bracket, turning the bracket clockwise to tighten it against the countertop. Then, use a screwdriver to tighten the screws in the mounting bracket. Overtightening may cause damage to the counter or faucet.



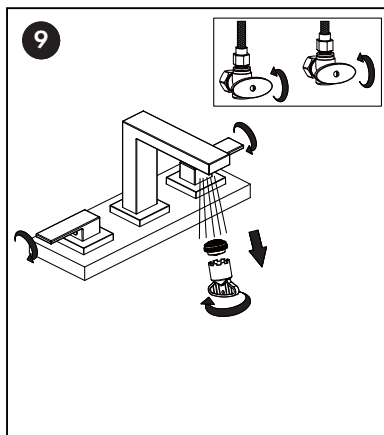
Connect one side of the connector hose to the push connection until a click is heard on the hot water line and do the same on the cold water line connector. Connect the middle water connector to faucet connection until a click is heard. Finally, when all the lines are connected, tug on the joints to ensure they are secure.

INSTALLATION

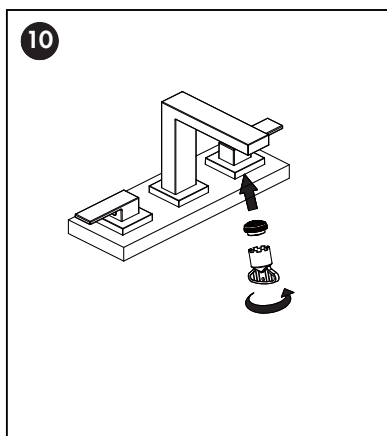
RBCN3-BF



Firmly hand tighten the hose to the corresponding valve and add a quarter-turn using the proper wrench. Tighten more if needed.



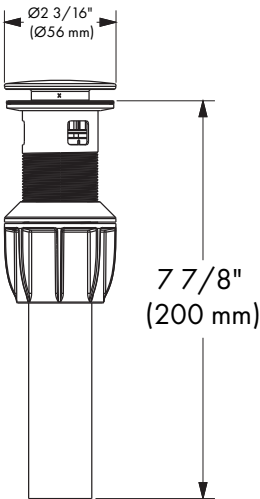
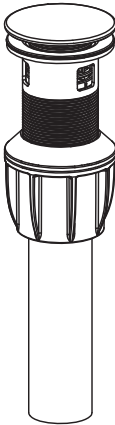
Turn on the water supply at the valves. Remove the aerator using the provided aerator wrench and turn on the faucet to flush any debris from the faucet.



Reinstall the aerator using the provided aerator wrench turning clockwise to tighten. Be sure not to cross-thread or over-tighten the aerator.

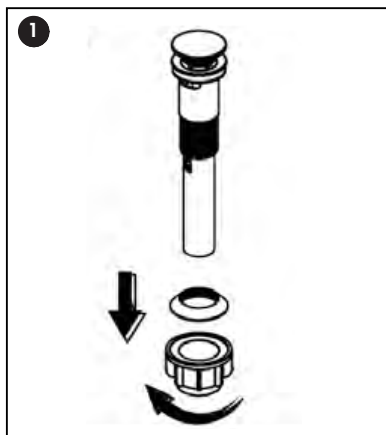
INSTALLATION

RBCN1-PDO

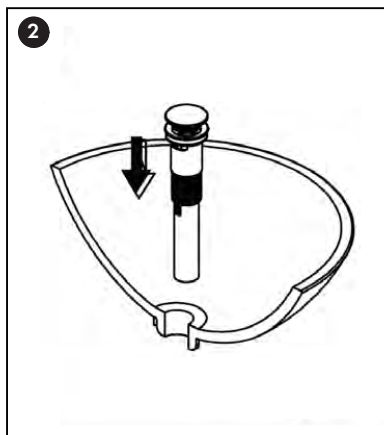


INSTALLATION

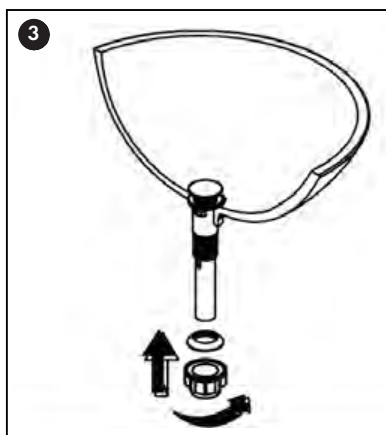
RBCN1-PDO



Remove mounting nut and washer from the drain.



Insert the drain into the sink.



Place the washer and mounting nut onto the drain turning clockwise to tighten and secure the drain in place. Be sure to turn on the water and test for leaks.

CARE AND MAINTENANCE

To keep the product clean, follow the steps below:

- Remove any surface dirt and film using clean water and cotton cloth.
- Spray cleaners such as mild liquid detergents, clear liquid glass cleaners, non-acidic and fully dissolved powder cleaners, or non-abrasive liquid polishers onto a microfiber cloth to clean the product.
- Do not clean with soaps, acid, polish, abrasives, or harsh cleaners.
- Rinse the product with clean water to thoroughly remove cleaner and dry with a microfiber cloth.
- Unscrew the aerator and clean when necessary.

TROUBLESHOOTING

PROBLEM	POSSIBLE CAUSE	SOLUTIONS
There is leakage under the handle.	The locking nut has come loose.	Unscrew the lever on the handle by hand. Loosen set screw with an Allen wrench. Remove the handle and unscrew trim cap by hand. Tighten locking nut with an adjustable wrench.
Water will not shut off completely.	Cartridge may be defective.	Unscrew the level on the handle by hand. Loosen set screw with an Allen wrench. Remove the handle and unscrew trim cap by hand. Unscrew the locking nut with an adjustable wrench. Remove ceramic disc cartridge. Check for cracks.
	Lines were not flushed prior to completing the installation and debris may made its way into the cartridge/aerator.	Remove ceramic disc cartridge and inspect for debris or damage.
	Handle is not placed correctly. If the set screw is loose, the handle may be able to be turned without turning the valve.	Tighten the screw and turn the handle to turn off the water. Loosen the screw, realign the handle, and tighten the screw.

WARRANTY

COVERAGE

ZLINE Kitchen and Bath faucets and bath accessories have a limited lifetime warranty from the original date of product delivery for the original purchaser of the product.

ZLINE warranty periods begin from the original date of product delivery and solely cover the original purchaser of the product, delivered new and in its original carton. ZLINE will provide free-of-charge, non-consumable replacement parts for the components that failed due to manufacturing defects.

It is the responsibility of the customer to install all replacement parts, as ZLINE does not perform service repairs on its faucets and bath accessories.

ZLINE's liability is limited to the original purchase price of the product. Additional injuries, losses, damages, or other inconveniences caused by product malfunction or defects in materials are not covered under the terms of this warranty.

TERMS

ZLINE warranties apply only to the original purchaser of a ZLINE product installed for normal residential use. This is defined as a single-family, residential dwelling in a non-commercial setting. Any warranty claim stemming from installation, operation, or any other use within a commercial setting is not covered under this limited warranty.

Commercial settings include, but are not limited to: schools, churches, hotels, restaurants, vacation rentals such as Airbnb, daycare centers, private clubs, fire stations, common areas in multi-family dwellings, nursing homes, food service locations, and institutional food service locations such as hospitals or correctional facilities.

This warranty is non-transferable and will not under any circumstance be extended based on the date of installation — the warranty period takes effect from the date of delivery and only covers the original purchaser. The warranty applies only to products installed in the contiguous United States and the District of Columbia.

WARRANTY

Out-of-pocket payments will not be reimbursed for replacement parts unless prior approval is received from ZLINE. Unapproved out-of-pocket payments for parts will not be reimbursed. Out-of-pockets for any type of service will not be reimbursed, as ZLINE does not perform service repairs on faucets and bath accessories. All warranty procedures must be followed to maintain warranty coverage.

If ZLINE is unable to replace the defective part after a reasonable number of attempts, ZLINE reserves the right to offer to replace the product or provide the original purchaser a full refund of the purchase price of the product (not including installation, removal, or other charges that were not included in the original purchase price).

The original purchaser of the product must provide the original proof of purchase, including the purchase date, when filing a claim to obtain replacement parts or refunds. Additionally, the original purchaser of the product must provide the serial number of the product when filing a claim to obtain replacement parts or refunds.

This warranty shall not apply to any ZLINE product in which the original factory serial number has been removed, altered, or cannot be readily determined for any reason. Further, ZLINE is not responsible for damage resulting from, but not limited to: shipment, delivery, or improper installation; negligence or improper maintenance, misuse, or abuse of the product; unauthorized alteration, modification, or tampering with the product; accident, fire, floods, pest infestations, pandemics, natural disasters, or any other unpreventable or unexplained acts of nature, commonly referred to as "acts of God"; flare-up fires or damages caused by improper electric supply, electrical line current, voltage, or power surges; and service to correct installation not in accordance with the instructions contained in ZLINE's product manuals and/or with local government codes.

WARRANTY

Additionally, this warranty does not apply to aesthetic damage, scratches, or natural wear caused by normal use; second-hand, open box products, or products purchased from an unauthorized retailer; and damages, problems, or any type of performance-related issues stemming from alteration or tampering with the accessory, including, but not limited to, painting stainless steel, black stainless, or Satin Stainless Steel finishes or any portion of the product's interior or exterior.

Information contained within ZLINE's installation and user manuals, in addition to product information included on ZLINE's website and all related digital listings, do not cover every possible condition and situation that may occur during the installation or operation of ZLINE products.

ZLINE reserves the right to make changes at any time to its products when considered safe, necessary, and useful. Always check the ZLINE website for the most up-to-date version of its product manuals: www.zlinekitchen.com/pages/manuals.

Do not install or operate any ZLINE product if it has missing or broken parts or if it arrives damaged due to shipping. If ZLINE products arrive damaged, contact ZLINE Customer Experience at 1-614-777-5004 for help. Failure to report a damaged appliance prior to installation or operation may void the warranty. ZLINE does not perform service repairs on its faucets and bath accessories.

ZLINE disclaims responsibility for damage or injury caused by improper installation or use of any of its products. ZLINE is under no obligation, by law or otherwise, to provide concessions, including repairs, prorates, rebates, discounts, or replacements, once the warranty has expired.

WARRANTY



Please contact ZLINE Customer Service for questions and troubleshooting help at 1-614-777-5004 or visit www.zlinekitchen.com/contact to utilize our online Customer Experience Portal.



Scan the QR code to view the most up-to-date version of our Installation Manual and User Manual.



Need to purchase a part or accessory for your ZLINE product? Visit www.zlineparts.com, ZLINE's official parts distribution partner.

1.0.1

zlinekitchen.com

1-614-777-5004

contact@zlinekitchen.com

ZLINE
ATTAINABLE LUXURY®