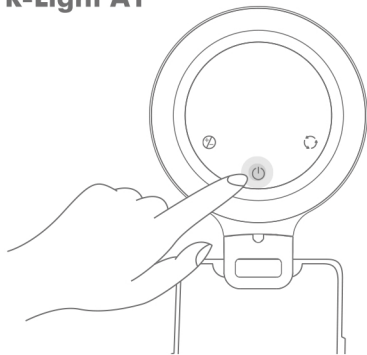


R-Light A1



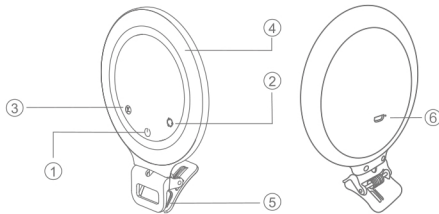
Touch Control Ring Light

CAPTURE YOUR EVERY PERFECT MOMENT

User Manual

Product Diagram

English



- ①. On/Off
- ②. Light Mode Control
- ③. Brightness Control
- ④. 30pcs White LED + 30pcs Warm LED (3000k-6500k)
- ⑤. Clip
- ⑥. Type-C charging

(The package includes a 1m charging cable)

1

Operation

English

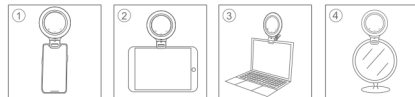
Turn ON/OFF: ⏻ Touch and stay for 1 second to turn on, touch again to turn off

Light Mode: ↻ Full Light/White Light/Warm Light. Touch one time for one mode, touch again for cycles.

Brightness Control: 🔊 Touch to brighten or dim the brightness, touch one time for one level, 4 levels total.

Charging : Build in 1000mAh battery, please use 5V USB Power for more safe charging. During charging, the red indicator will be on, and will be green when the charging is finished.

Clip: The clip with 360° horizontal rotation, 55° forward tilt and can open up to 32mm.



2