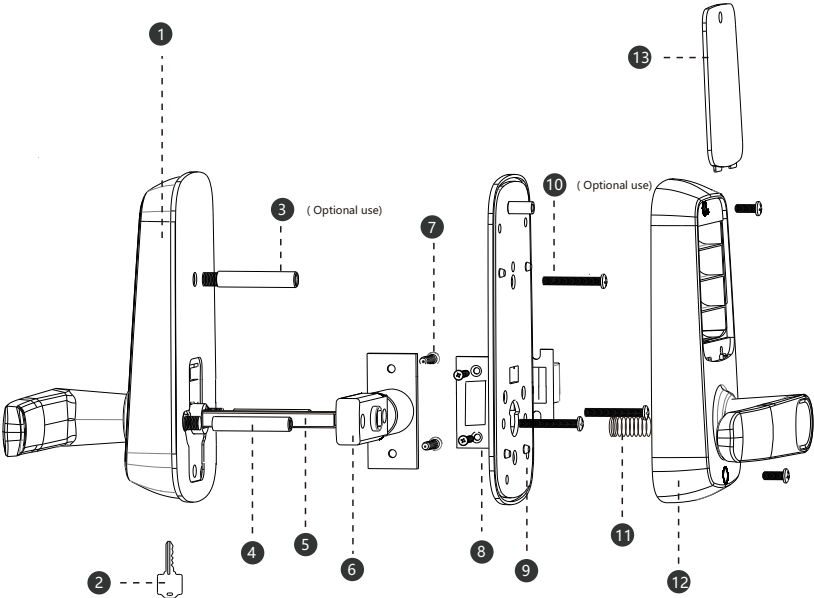


Installation & Operation Guide

This guide contains important information about your lock. Please keep this guide

Overall



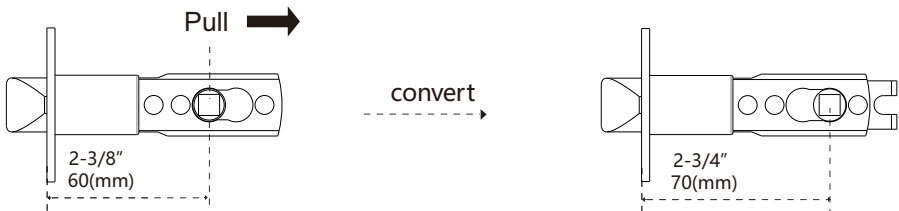
- 1 Exterior Assembly
- 2 Spare Key
- 3 Reinforcement screws
- 4 Screw Posts
- 5 Square Spindle
- 6 Latch
- 7 Screw
- 8 Striking Plate
- 9 Mounting Plate
- 10 Screw
- 11 Spring
- 12 Interior Assembly
- 13 Battery Cover

Parts List

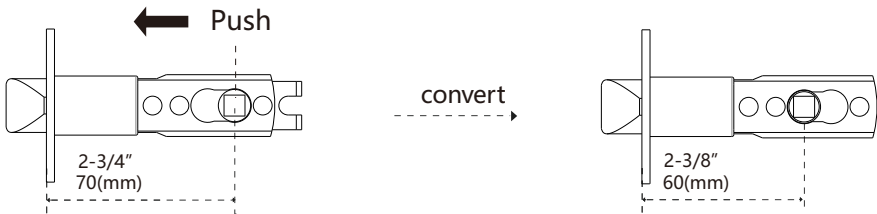
Spare Key A	Exterior Assembly B	Latch C	Screws for Latch/Striking Plate D
Striking Plate E	Mounting Plate F	Screws for Mounting Plate and Exterior Assembly G	Interior Assembly H
Battery Cover I	Screws for Interior Assembly J	Square Spindle K Spring L	Strike box M (Optional use)

Ajustable Latch Backset

1.TO CONVERT BACKSET FROM 2-3/8" (60mm) TO 2-3/4" (70mm)



2.TO CONVERT BACKSET FROM 2-3/4" (70mm) TO 2-3/8" (60mm)



Installation Guide

1 PREPARE THE DOOR AND CHECK DIMENSIONS (with the TEMPLATE)

- A Measure to confirm the size of hole in the door frame. The wide is 1" (25mm), the length is 1-3/8" (35mm), the depth is 1" (25mm).
- B Measure to confirm the thickness of door is 1-1/4" to 2" (30mm-50mm), the latch hole in the is 1" (25mm).
- C Measure to confirm the backset is 2-3/8" or 2-3/4" (60mm or 70mm). And adjust the length of the latch backset accordingly.
- D Measure to confirm the size of hole in the door is 2-1/8" (54mm).

2 INSTALL THE LATCH AND STRIKE PLATE

- A Install strike plate and strike box in the door frame with two screws (D) provided.
- B Insert latch into hole in side of door with the word UP" up, and fasten two screws (D) on the latch into door with two screws .

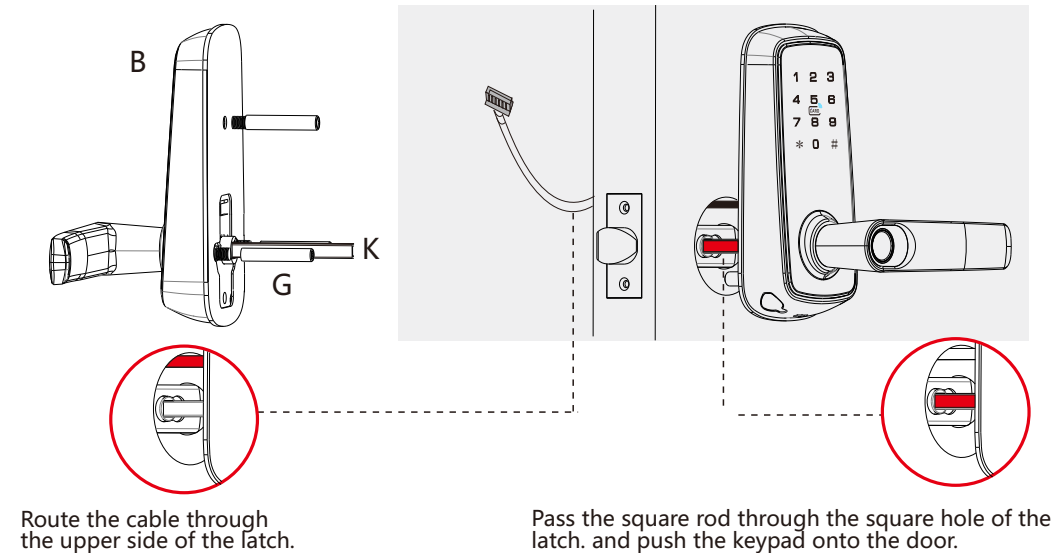
3 ADJUST HANDLE ACCORDING TO THE DOOR OPENING DIRECTION

- 1.Please confirm the door opening direction before installing.
- 2.Turn the handle to the desired direction, then tighten the reversing screw.
- 3.Make sure the arrow on the Exterior Assembly is pointing up.

4 INSTALL THE SCREW POSTS AND EXTERIOR ASSEMBLY

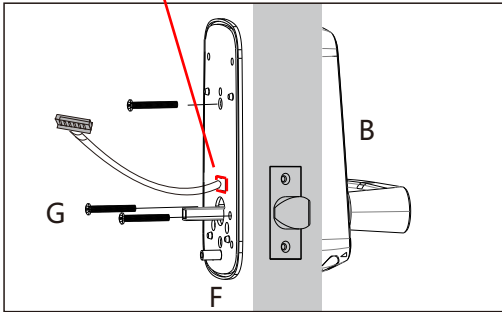
- △ IMPORTANT: Please make sure the arrow on the Exterior Assembly is pointing up.
- A Insert the screw posts into the stud and tighten it.

B Install the Exterior Assembly

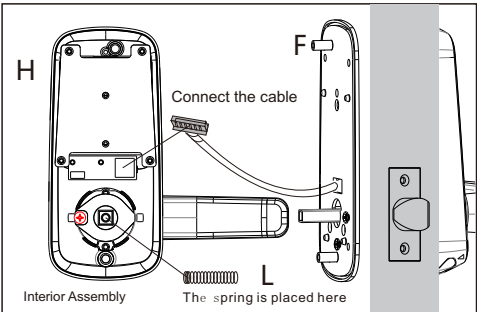


5 INSTALL THE INTERIOR ASSEMBLY AND BATTERY COVER

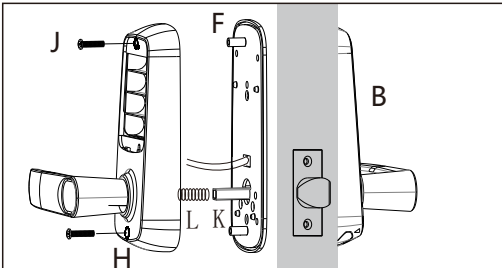
- A Route cable through the mounting plate, and Tighten screws evenly.
- △ IMPORTANT: the cable go through the square hole



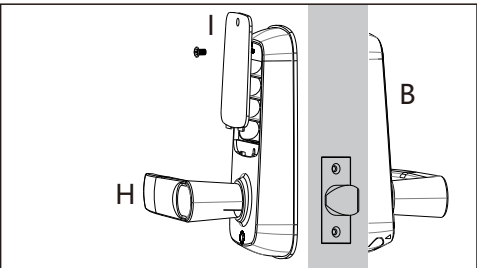
- B Connect cables to the interior Connect cables to the interior



- C Snap the interior assembly to the mounting plate and tighten the screws



- B Insert 4 AA batteries and close the cover



Quick Set Up

△ The factory status of the product is in experience mode, and the lock can be unlocked without verifying the master info. Please set your master info as soon as possible.

- 1.THE “*” KEY
To clear the key/back key, when entering the password, click to clear the previous input .

- 2.THE “#”KEY
Confirm key or enter menu function key, press it as the doorbell when there is no input.

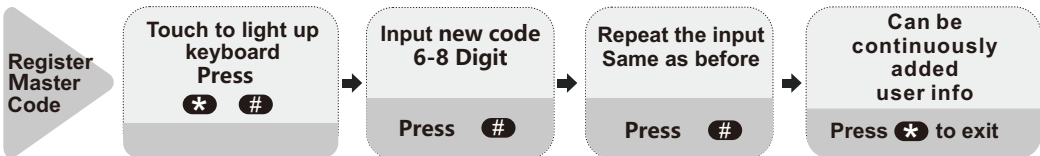
- 3.MASTER INFO
The administrator's fingerprint, password, or IC card. Required for programming and feature settings. It can also be used to unlock.

- 4.USERS INFO
Fingerprints, passwords, and IC cards of non administrators. Can only be used for unlocking.

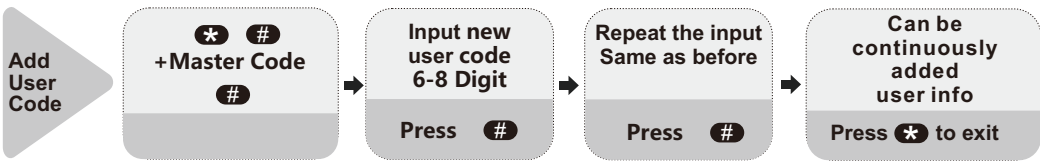
- 5.ANTI-PEEPING FUNCTION
When unlocking with a password, User can prevent pin code exposure to strangers by entering random digits before and after the pin code.

291 316874 673
Random digits password Random digits

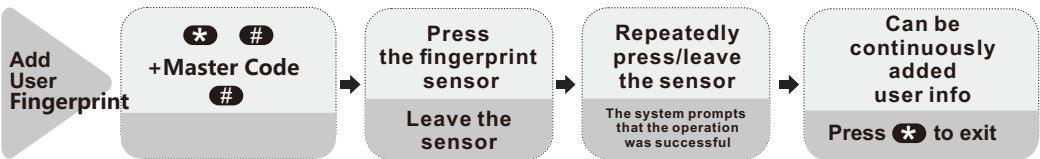
- 6.When you enter the wrong button, you can press * clear it. If you do not enter any buttons within 10 seconds, the system will exit the programming mode, and you can attempt programming procedure again.



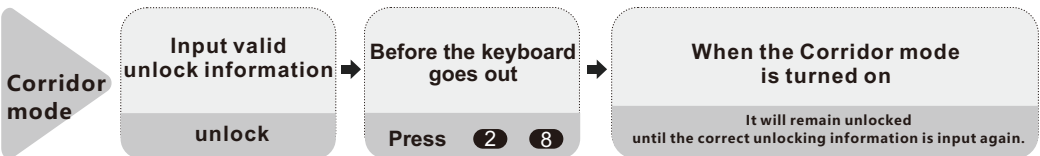
△ The default value is None. The new master code must be 6-8 digits.



△ The new user code must be 6-8 digits.



△ Press the sensor each time you change your finger angle for better results.



△ When the passage mode is turned on, it will remain unlocked until the correct unlocking information is input again.

Advanced stting options

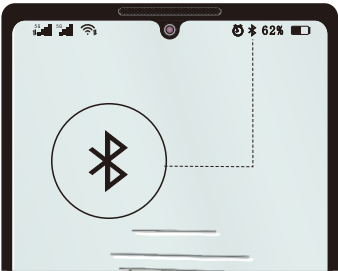


TUYA Smart Home Platform

The lock supports TUYA Bluetooth protocol,you can manage your lock by connecting TUYA APP.
Search “TUYA” in the app market or scan the code to get the APP:

How to connect the app

Download and install the TUYA APP, register and log in



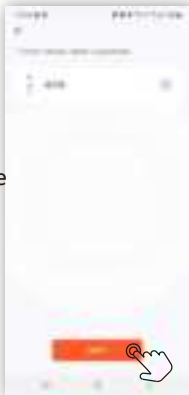
Important:
Make sure your phone's Bluetooth is enabled.



Step 1
Open TUYA APP, click to add device



Step 2
Choose Security & Surveillance -Lock(BLE)



Step 3
Click on the scanned device and Next



Step 4
Edit your device name



Step 5
You can press the icon to unlock via Bluetooth.

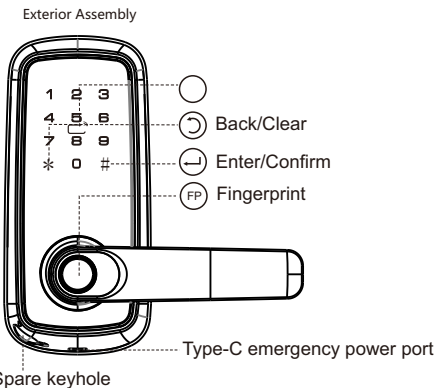
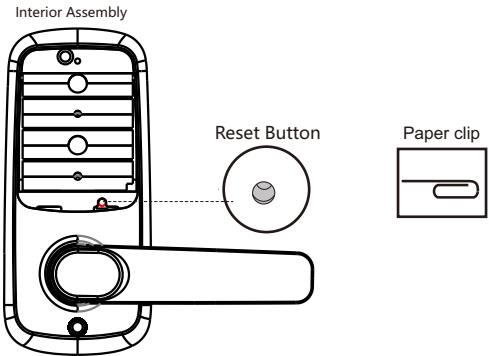


Step 6
You can generate a remote dynamic password.

Restore To Factory Default Settings

The factory status of the product is in experience mode, and the lock can be unlocked without verifying the master info. Please set your master info as soon as possible.

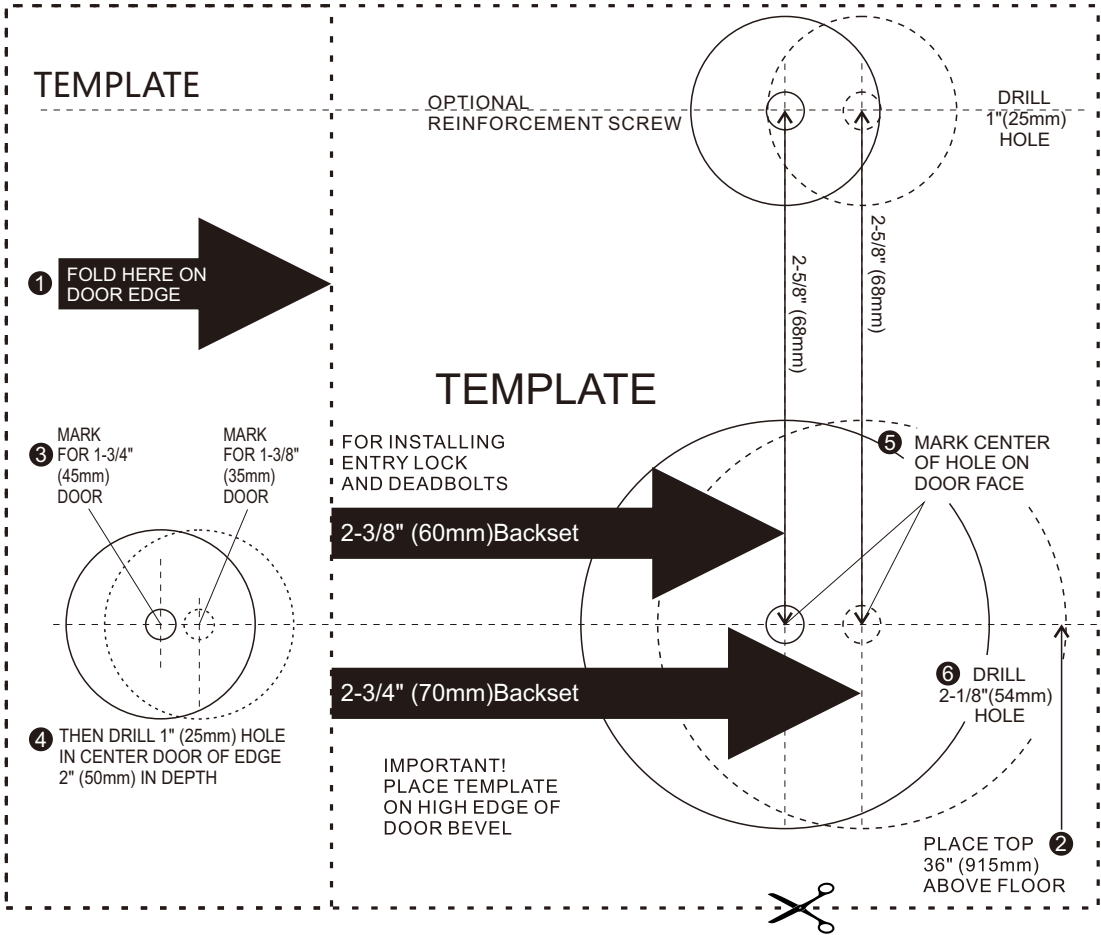
- 1.Open and unlock the door.
- 2.Find a paper clip, put it into the hole at the bottom, long press for 5 seconds until the lock voice prompts “initialized successfully”.
- 3.The lock has been reset successfully. All entered information has been deleted.



Get 24/7 Assistance at



Use camera or OR scanner to scan
Visit: <https://kingforce.afterservice.vip>
Email: kingforce@afterservice.vip
Call: +1(888)839 1709



This device complies with part 15 of the FCC Rules. Operation is subject to the following two conditions: (1) This device may not cause harmful interference, and (2) this device must accept any interference received, including interference that may cause undesired operation.

Any Changes or modifications not expressly approved by the party responsible for compliance could void the user's authority to operate the equipment.

Note: This equipment has been tested and found to comply with the limits for a Class B digital device, pursuant to part 15 of the FCC Rules. These limits are designed to provide reasonable protection against harmful interference in a residential installation. This equipment generates uses and can radiate radio frequency energy and, if not installed and used in accordance with the instructions, may cause harmful interference to radio communications. However, there is no guarantee that interference will not occur in a particular installation. If this equipment does cause harmful interference to radio or television reception, which can be determined by turning the equipment off and on, the user is encouraged to try to correct the interference by one or more of the following measures:

- Reorient or relocate the receiving antenna.
- Increase the separation between the equipment and receiver.
- Connect the equipment into an outlet on a circuit different from that to which the receiver is connected.
- Consult the dealer or an experienced radio/TV technician for help.

RF warning for Portable device: The device has been evaluated to meet general RF exposure requirement. The device can be used in portable exposure condition without restriction.