

MWE 360 Photobooth Product User Guide (V3.2)



Catalogue

I	Attention	1
II	Component Introduction	2
III	Installation guide	4
IV	Operation Instructions	8

1.Attention

1.Before using, please check whether the power cord, base LED Strip cord and other items are stuck on the rotating table or not, to prevent the cables from being damaged.

2.For users safety, don't jump hard on the Stage.

3.Don't make the edge of the Stage bear too much weight, better distribute the weight evenly on the stage.

4.The Stage should be adjusted paralleled to the ground by rotating the foot cup before using.

5.Do not stop the rotating rod deliberately when it was running.

6.Do not put heavy objects on the Angle Adjuster and Selfie Telescopic Rod.

7.Children should not use it alone, but must be accompanied by an adult.

8.Pls take off the foot cups when put the photo booth into the flight case for transportation.

2.Component Introduction

The attachments received are subject to



Tablet Holder



Mobile Phone Holder



Metal Ball



Remote Control



5V Adapter (for LED Strip)



Remote Shooting



Fixed Bracket



Ring Light



Foot Cup For Base



Portable Bag



Flight Case / Honeycomb Box



Wheel



Fixing Screw



Angle Adjuster



Selfie Telescopic Rod



Motor Controller



LED Strip Remote Control



LED Strip



Wrench



AC-DC Adapter



Universal Holder



Accessories Handbag



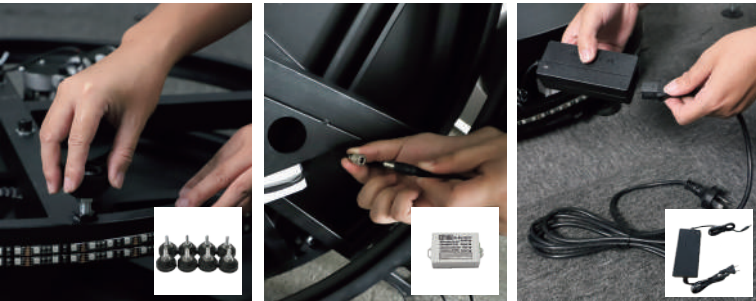
LOGO Sticker



Mask

3.Installation Guide

Step1: Take the Stage out of the package, Do not cut off the black plastic ties, which are used to tie up the wire and control box. install all the 8 Foot Cups and adjust the Stage parallel to the ground. Then connect the AC-DC adapter to the Motor Controller.



Step 1 Scan it

Step 2: Install the Angle Adjuster, and lock it with Fixed Screw.



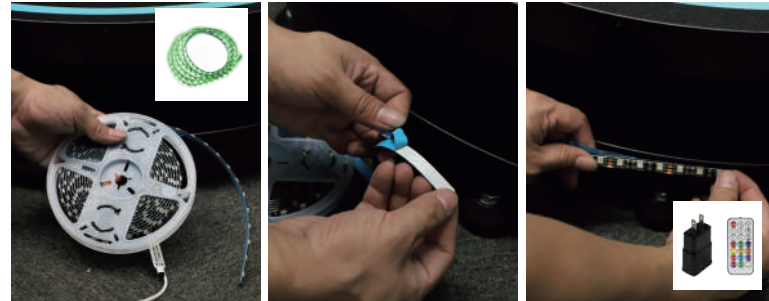
Step 2 Scan it

Step 3: Install the Selfie Telescopic Rod.



Step 3 Scan it

Step 4: Stick the LED Strip to the base and connect it to 5V Adapter (for LED Strip).



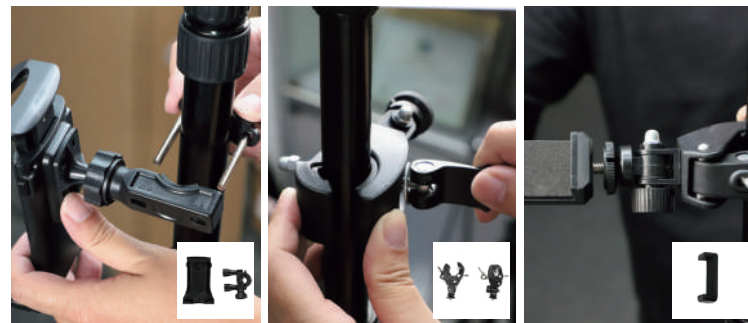
Step 4 Scan it

Step 5: Install Ring Light.



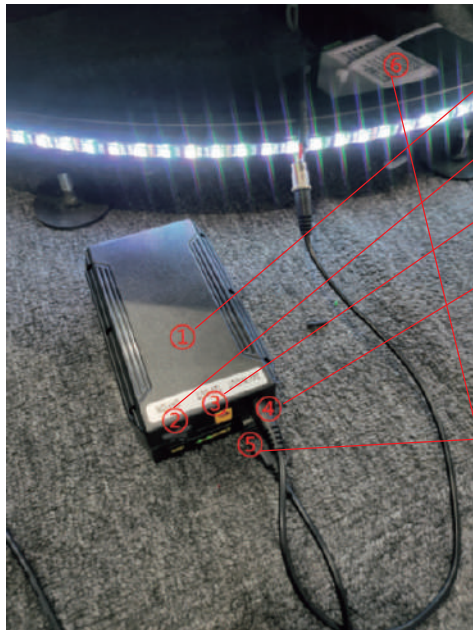
Step 5 Scan it

Step 6: : Install Fixed Bracket and Phone Holders.



Step 6 Scan it

Step7: Power bank, lithium battery connection and usage(**Power Bank and lithium battery are not our standard accessories**). The Ring Light should connect with USB port of the power bank. The motor controller should connect with the lithium battery s DC 24V power port. And the LED strip should connect with the lithium battery s DC 5V USB port.



- ①Lithium Battery.
- ②Power switch of the Battery.
- ③DC 12V output port.
- ④DC 24V output port. Supply the photo booth power with this port connection. Also this is the Lithium Battery charging port.
- ⑤5V USB port, connected with the LED Strip.
- ⑥Motor Controller.



Normal Light

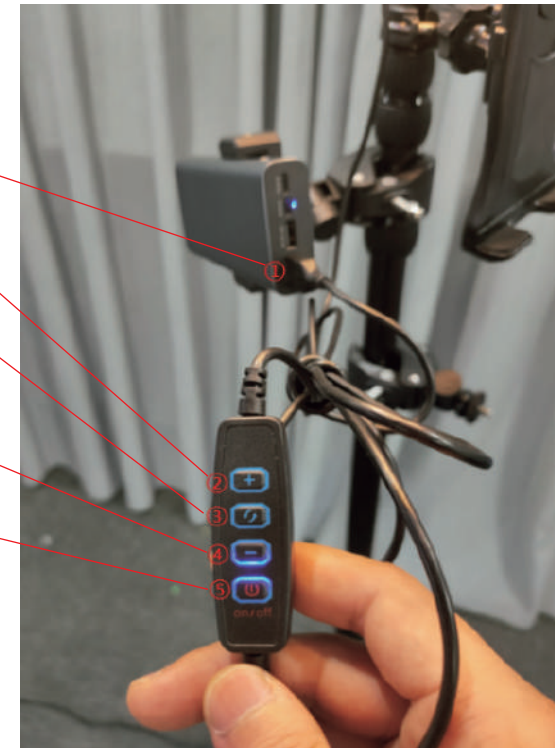


Warm Light



Cold Light

- ①Ring Light USB connection with Power Bank.
- ②Brightness Increase Button.
- ③Brightness Decrease button.
- ④Temperature Switch.
- ⑤Power Button.

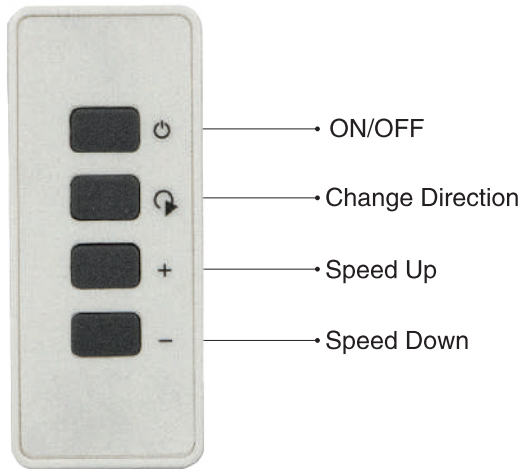


4.Operation Instructions

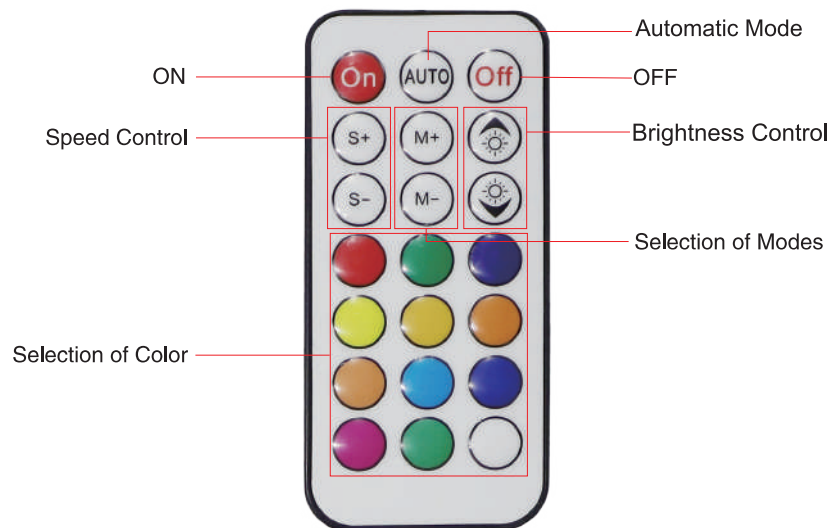
Install suitable batteries for all remote controls(**CR-2032**).
Power up the AC-DC adapter.

Plug the two USB(Ring Light& LED Strip) into the power bank and 5V adapter.

Remote Control Instructions



Lightband Controller Instructions



Installation Guide

A diagram to explain the overall structure in detail

