

Safety Instructions

Read and follow the instructions below before installation:

- Be cautious of static electricity during installation and usage. Keep the product away from sharp objects or strong corrosive chemicals.
- Do not leave children unattended with the device.
- Do not install the strip light near any heat sources.
- The product is not water-resistant. Be cautious when installing and using.
- Use the product with the provided power adapter only.
- Do not use damaged or repaired product.
- Please turn off the power and unplug the adapter when the strip light will not be used for a long time.
- The recommended working temperature is between -10-45°C.
- The storage temperature should be between -20-60°C.
- The shelf life is 12 months.

What the box includes



RGB strip light X1



Power Adapter X1



User Manual X1

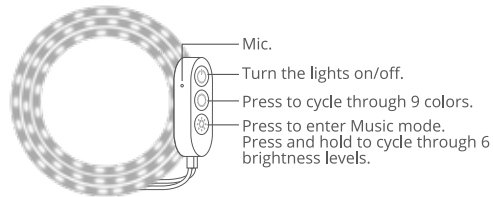


Service Card X1

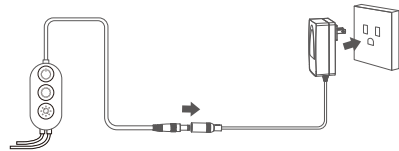
Specifications

Length	15m/50ft
Light Color	RGB
Control Method	App, Control Box, Voice Control
Power Supply	12VDC via Adapter

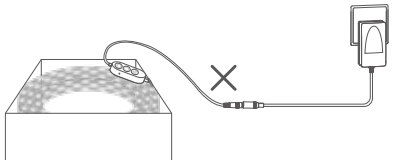
Control Box Function Description



Power-on Test



Do Not power on before spreading the strip light.

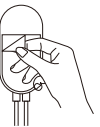


Installation

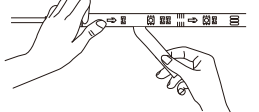
a. Clean the wall surface to make it free of dust particles.



b. Estimate the positions of the control box and the power socket and make sure the strip light is long enough. Tear off the glue on the rear of the control box and stick it to the wall surface. For a more convenient installation, please do not connect the control box with the adapter in this step.



c. Tear off the glue on the rear of the strip light. Stick the strip light onto the wall surface and press hard to make sure it is glued firmly.

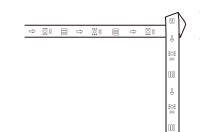


d. When it is necessary to bend, please try to avoid electronic components like light beads and pads on the strip light, so as not to damage the strip light.

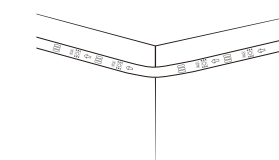
Recommended Tip: Try to bend with a bigger radian to protect the strip light and the electronic components on it.



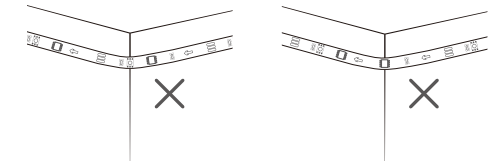
False Demonstration:



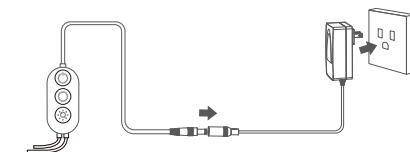
Recommended Tip: Try not to bend at electronic components like light beads, bonding pad to avoid short-circuiting.



False Demonstration:



e. Connect the adapter with the control box and plug it into the power socket.



Note: To get better experience of the music mode, it is recommended to keep the control box close to the sound source.



Govee Home App

For FAQs and more information,
please visit: www.govee.com

Pairing Your Device with Govee Home App

What You Need

- A Wi-Fi router supporting the 2.4GHz and 802.11 b/g/n bands. 5GHz is not supported.
- A smartphone or tablet running iOS 8.0 (or above) or Android 4.3 (or above).

Pairing Instructions

- Download Govee Home App from the App Store (iOS devices) or Google Play (Android devices).
- Turn on Bluetooth on your smartphone.
- Open the app, tap the “+” icon in the top right corner and search for “H615C”.
- Tap the device icon and follow the on-screen instructions to complete pairing.



Controlling the Device with Your Voice

- Open Govee Home App, then tap the device icon to enter details page.
- Tap the settings icon in the top right corner.
- Select “Using Guidance” and follow the on-screen instructions to control the device by using your voice.

Troubleshooting

- The strip light does not work/is malfunctioning:
 - Power the strip light off then on. Make sure the adapter and the control box have been powered on.
 - Long press and hold the power button on the control box and quickly press the middle button four times to restore factory settings.
- The strip light does not display the full selected color/Some light beads do not light up:
 - Please contact Govee support team.
- Cannot connect to Govee Home App:
 - Do not skip Bluetooth connection in the app.
 - Ensure Bluetooth on your smartphone has been turned on.
 - Your smartphone may be incompatible with the Govee Home App. Try using a different smartphone.
 - Power the strip light and your smartphone Bluetooth off then on, then try again.

- Ensure that your smartphone is within 1m/3.28ft of the strip light when connecting.
- Clear any obstructions that are between the strip light and your smartphone.
- Cannot connect to Wi-Fi.
 - Do not skip the Wi-Fi connecting steps in the app.
 - 5GHz network is not supported. Please set the router to 2.4GHz and then reset it.

- Connect your phone to Wi-Fi and check whether the network works well.
- Make sure you have entered the correct Wi-Fi name and password.
- Change your Wi-Fi password to a brief one. 8 numbers and letters are suggested.
- Connect your smartphone hotspot to the strip lights and check whether the router works with the strip lights

- Cannot connect to Alexa.

- Unplug every connective part of the strip lights then firmly reconnect them.
- Reset your smartphone Wi-Fi.
- Unplug the adapter port then replug it.

Customer Service

 Warranty: 12-Month Limited Warranty

 Support: Lifetime Technical Support

 Email: support@govee.com

 @Govee  @govee_official  @govee.official
 @Goveeofficial  @Govee.smarthome

FCC and ISED Canada Statement

This device complies with Part 15 of the FCC Rules and Industry Canada licence-exempt RSS standard(s). Operation is subject to the following two conditions:
(1) This device may not cause harmful interference, and
(2) This device must accept any interference received, including interference that may cause undesired operation.
Warning: Changes or modifications not expressly approved by the party responsible for compliance could void the user's authority to operate the equipment.

Le présent appareil est conforme aux CNR d'Industrie Canada applicables aux appareils radio exempts de licence. L'exploitation est autorisée aux deux conditions suivantes :
(1) l'appareil n doit pas produire de brouillage, et
(2) l'utilisateur de l'appareil doit accepter tout brouillage radioélectrique subi, même si le brouillage est susceptible d'en compromettre le fonctionnement.

NOTE: This equipment has been tested and found to comply with the limits for a Class B digital device, pursuant to Part 15 of the FCC Rules.

These limits are designed to provide reasonable protection against harmful interference in a residential installation. This equipment generates uses and can radiate radio frequency energy and, if not installed and used in accordance with the instructions, may cause harmful interference to radio communications. However, there is no guarantee that interference will not occur in a particular installation. If this equipment does cause harmful interference to radio or television reception, which can be determined by turning the equipment off and on, the user is encouraged to try to correct the interference by one or more of the following measures:
1. Reorient or relocate the receiving antenna.
2. Increase the separation between the equipment and receiver.
3. Connect the equipment into an outlet on a circuit different from that to which the receiver is connected.
4. Consult the dealer or an experienced radio/TV technician for help.

This Class B digital apparatus complies with Canadian ICES-005. Cet appareil numérique de la classe B est conforme à la norme NMB-005 du Canada.

FCC and IC Radiation Exposure Statement

This equipment complies with FCC and IC radiation exposure limits set forth for an uncontrolled environment. This equipment should be installed and operated with minimum distance 20cm between the radiator & your body.

la distance entre l'utilisation et l'appareil ne doit pas être inférieure à 20 cm.

This device uses a non-replaceable light source. When the light source reaches the end of its life cycle, this device should be replaced. Not intended for illumination. Only used for creating ambiance.

- Do not connect the rope light to the supply while it is in the packing or wound onto a reel;
- Do not use the rope light when covered or recessed into a surface;
- Do not open or cut the rope light;

Responsible party :

Name: GOVEE MOMENTS(US) TRADING LIMITED
Address: 13013 WESTERN AVE STE 5 BLUE ISLAND IL 60406-2448
Email: support@govee.com
Contact information: <https://www.govee.com/support>

Govee is a trademark of Shenzhen Intellirocks Tech. Co., Ltd.
Copyright ©2021 Shenzhen Intellirocks Tech. Co., Ltd. All Rights Reserved.



FOR INDOOR USE ONLY
POUR UNE UTILISATION EN INTÉRIEUR UNIQUEMENT

Model: H615C

Govee RGB LED Strip Light



User Manual