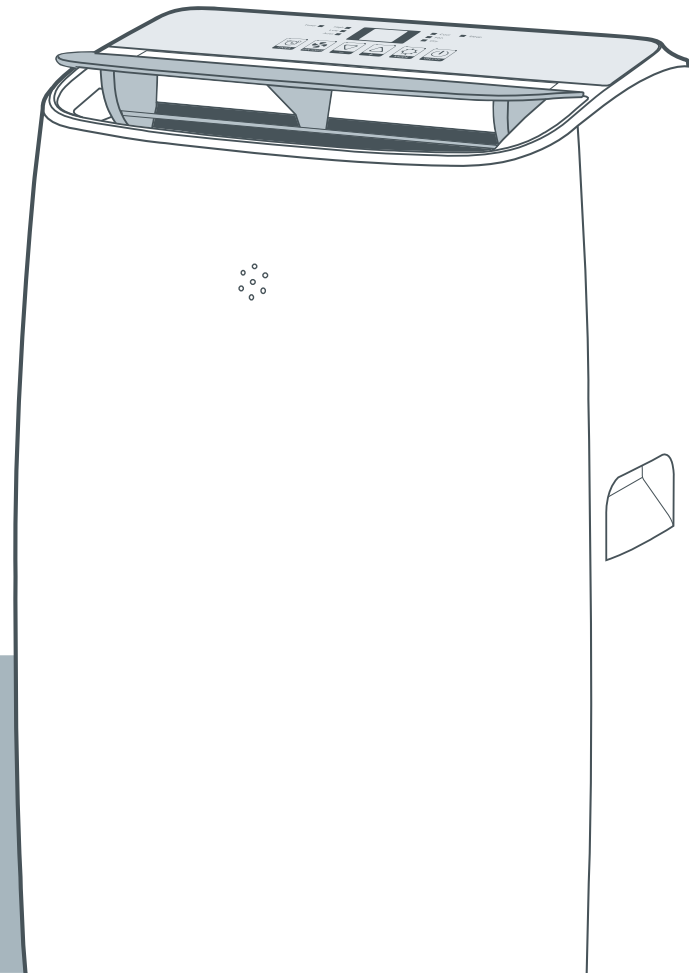


**VAGKRI**

## Questions or Concerns?

✉ [support@vagkrihome.com](mailto:support@vagkrihome.com)

# Portable Air Conditioner



Manufacturer: Shenzhen Guiyang Network Technology Co., Ltd  
Address: 1404K3, East Block, Shengtang Commercial Building,  
Futian District, Shenzhen, China

Made in China



VA-AC03 / VA-AC04

## User Manual

Rev\_1.0\_EN

# CONTENTS

IMPORTANT SAFETY INSTRUCTIONS 01-02

EXPLORING YOUR AIR CONDITIONER 03-04

USING YOUR AIR CONDITIONER 05-08

CARE AND CLEANING 09

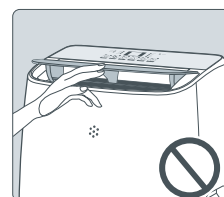
TROUBLESHOOTING GUIDE 10-11

WARRANTY AND SERVICE 12

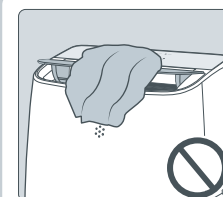
## IMPORTANT SAFETY INSTRUCTIONS



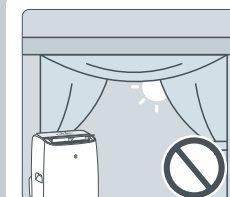
**READ ALL INSTRUCTIONS BEFORE USE AND SAVE FOR FUTURE REFERENCE**



**DO NOT** manually adjust the air outlet louver. Adjust with remote control only.



**DO NOT** partially or fully cover or block airflow while in operation.



**DO NOT** exposure to direct sunlight or extreme heat. Partially close the curtains and/or blinds.

When using an electrical appliance, especially when children are present, basic safety precautions should always be followed, including the following:

### INTENDED USE

- This appliance is not intended for use by persons (including children) with reduced physical, sensory or mental capabilities, or lack of experience and knowledge, unless they have been given supervision or instruction concerning the use of the appliance by person responsible for their safety.
- Close supervision is necessary when any appliance is used by or near children. Children should be supervised to ensure that they do not play with the appliance. Cleaning and user maintenance shall not be done by children unless they are older than 8 and supervised. Keep the appliance and its cord out of reach of children.
- Use the appliance only for intended household purposes as described in this User Manual. Any other use is not recommended that may cause fire, electric shock, or injury to persons.

### ELECTRICITY SAFETY

- This appliance must be provided with correct voltage via a professionally installed power socket. Make sure the voltage indicated on the label of the appliance is the same as your local supply.
- Always make sure the air conditioner is properly grounded. To minimize shock and fire hazards, proper grounding is important. The power cord is equipped with a three-prong grounding plug for protection against shock hazards.
- **DO NOT** share a single outlet with other electrical appliances. Use on single outlet circuit only.
- **DO NOT** operate the air conditioner with a damaged cord or plug or if it malfunctions, is dropped or damaged in any manner. If the supply cord is damaged, it must be replaced by the manufacturer, its service agent or similarly qualified persons in order to avoid a hazard.
- **DO NOT** start or stop the air conditioner by unplugging the power cord or turning off the power at the electrical box. **DO NOT** pull on the power cord.

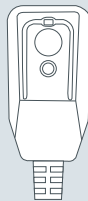
- **DO NOT** use an extension cord or an adapter plug. DO NOT remove any prong from the power cord.
- In a thunderstorm, power off the air conditioner to avoid damage due to lightning.

### RELATED TO USE

- **DO NOT** attempt to disassemble, repair, modify or replace any part of the appliance. No user serviceable parts inside. All servicing should be performed by qualified personnel only.
- **DO NOT** store or use gasoline or other flammable vapors and liquids in the vicinity of this or any other appliance. Read product labels for flammability and other warnings.
- **DO NOT** install the air conditioner in a wet room, such as a bathroom or laundry room. Too much exposure to water can cause electrical components to short circuit.
- **DO NOT** run the air conditioner without outside protective cover or filter in place. This could result in mechanical damage within the air conditioner.
- **DO NOT** sit on or place any object on top of the air conditioner.
- **DO NOT** insert fingers or objects in any ventilation or exhaust opening while in operation.
- Keep the cord out of heavy traffic areas and where it will not be tripped over. Never route the cord under furniture or appliances.
- Always place and use the appliance on a dry, stable, level, and horizontal surface. Make sure the appliance cannot be easily knocked over by a person or object.
- Always turn the air conditioner OFF and unplug it before cleaning, making any repairs or servicing, or whenever not in use.
- In the event of a malfunction (sparks, burning smell, etc.), immediately stop operating, disconnect the power cord and contact our Customer Support.

### GFCI SAFETY PLUG

- The power supply cord has creepage protection device that senses damage to the power cord. Regularly check to make sure the safety device is working.
- Do not use this device to turn the unit on or off.
- Always make sure the RESET button is pushed in for correct operation.
- If reset fails, have the power supply replaced by qualified personnel.



1. Plug in and check if the indicator lights up green.
2. Press the TEST button, you will notice a click with the indicator off.
3. Press the RESET button, the green indicator will turn on again for use.

### FOR HOUSEHOLD USE ONLY SAVE THESE INSTRUCTIONS

### Specifications

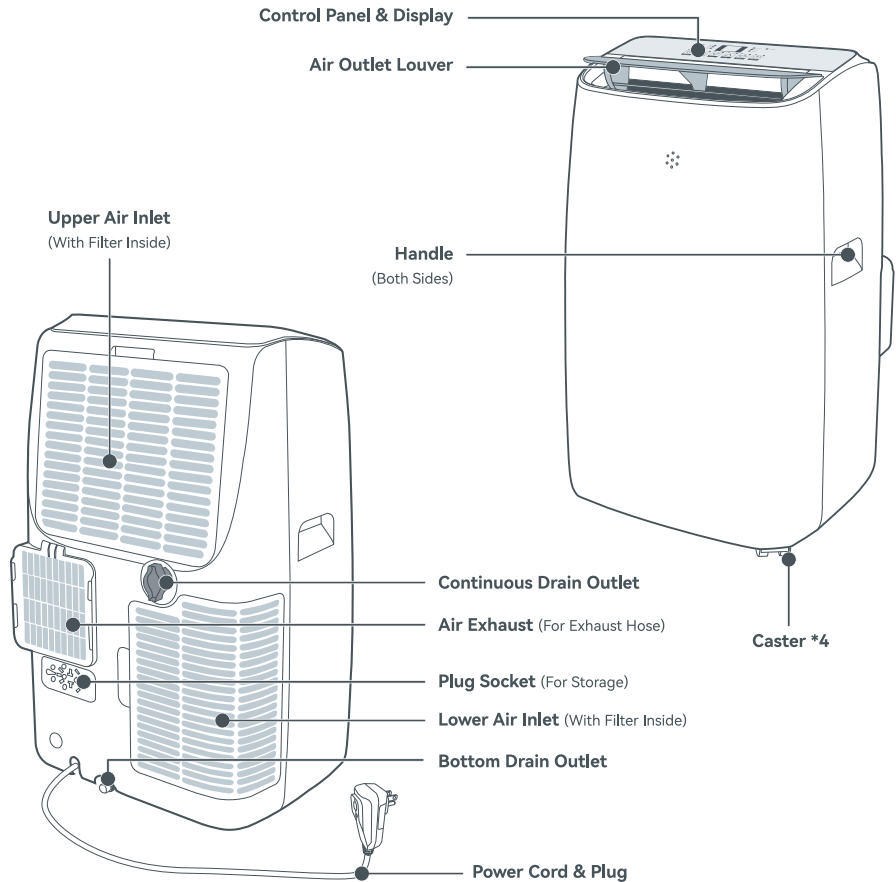
Model	VA-AC03	VA-AC04
Voltage	115V~ 60Hz	115V~ 60Hz
Current	12.0A	11.0A
Cooling Capacity	8150 Btu/h	10200 Btu/h

## EXPLORING YOUR AIR CONDITIONER

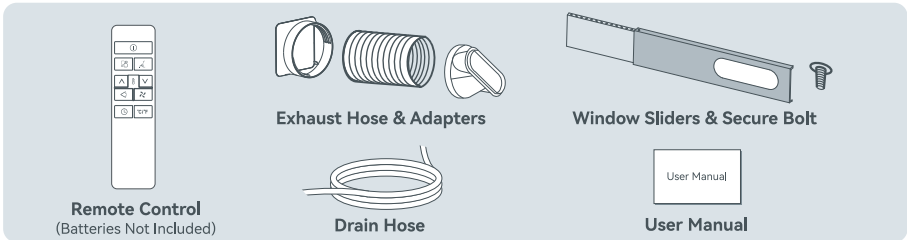


This unit may have been tilted or placed upside down during transportation. Please set it upright and outside the box for 24 hours before plugging in.

Check if all accessories are included. Contact us via [support@vagkrihome.com](mailto:support@vagkrihome.com) if there is any missing part.



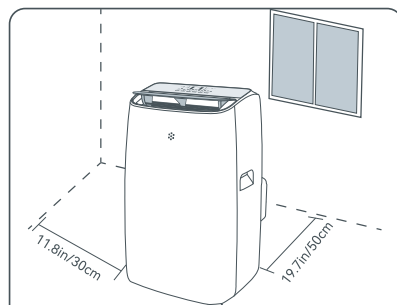
### Other Accessories



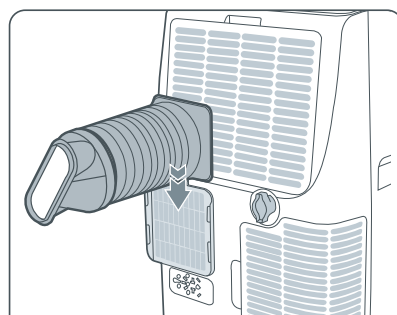
## Setting Up



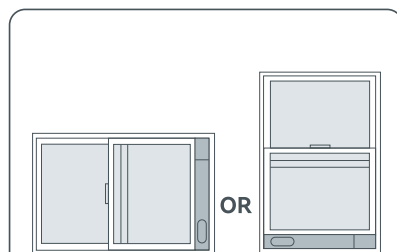
Make sure that the exhaust hose is mounted properly and securely before use.



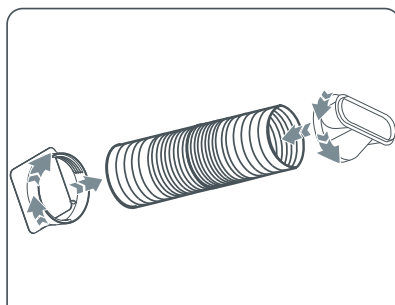
- 1 Locate upright on a firm, flat floor close to a window or opening. Leave enough circulation space around.



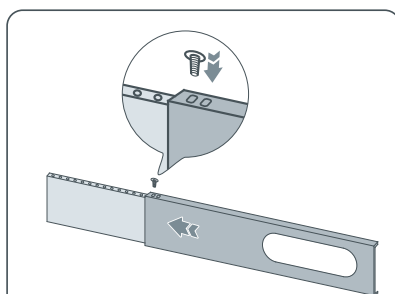
- 3 Slide the exhaust hose assembly into the air exhaust.



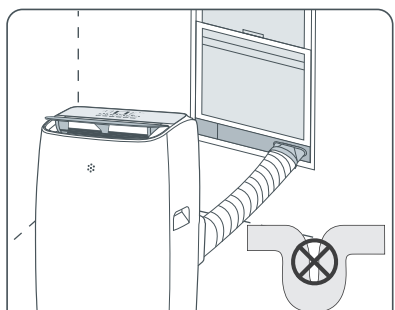
- 5 Close the window to secure the window slider kit in place. Seal the gap with duct tape if required.



- 2 Connect the hose adapter to one end of the exhaust hose. Connect the window adapter to the other end.



- 4 Adjust the length of the window slider to fit your window. Secure with the included bolt.



- 6 Insert the exhaust hose into the hole of the window kit. Extend to a minimum length. Avoid any sharp bends or sags.

## USING YOUR AIR CONDITIONER

### Control Panel & Display



#### Power ON/OFF

Tap to turn ON or OFF the air conditioner.



#### Mode Selection

With unit on, tap to select Cool / Fan / Dry / Smart mode.



#### Temperature / Timer +

With unit on, tap to increase temperature or time.



#### Temperature / Timer -

With unit on, tap to decrease temperature or time.



#### Fan Speed

With unit on, tap to select High / Low / Auto fan speed.



#### Auto ON/OFF Timer

Tap to set a time (0.5-24H) to turn on or off automatically.



#### Sleep Mode

Run with remote control



#### Cool Mode



#### Fan Mode



#### Dry Mode



#### Smart Mode



#### High Speed



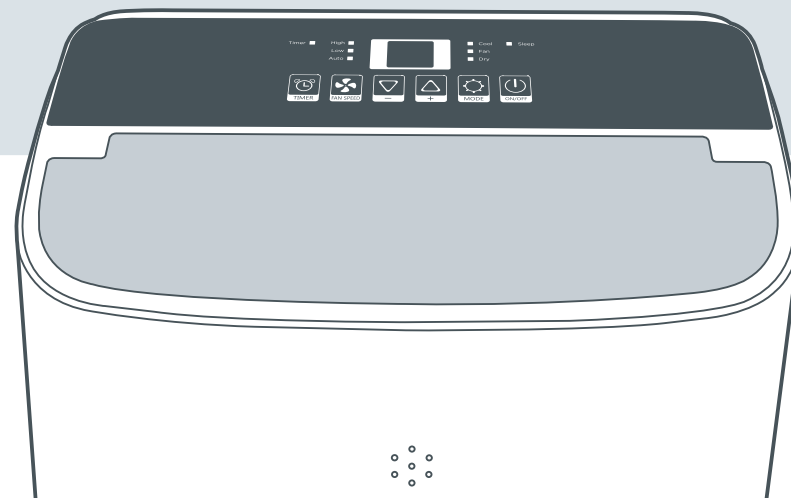
#### Low Speed



#### Auto Speed



#### Auto ON/OFF Timer

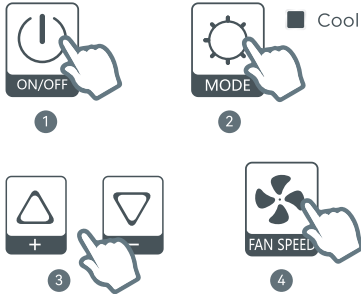


# Control Functions



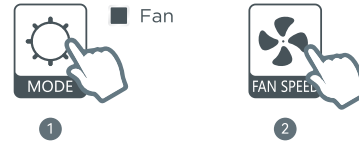
It is recommended to place the air conditioner on a firm, level surface free from obstructions with the doors and windows closed for optimum cooling efficiency.

## Cool Mode



- 1 Tap **ON/OFF** button to turn on.
- 2 Tap **MODE** button until **Cool** indicator lights up.
- 3 Tap **+/-** button to set desired temperature (64°F~90°F / 18°C~32°C).
- 4 Tap **FAN SPEED** button to select High / Low / Auto speed.

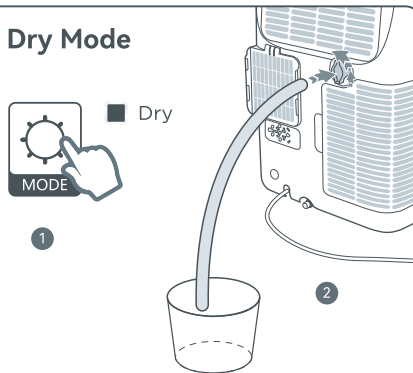
## Fan Mode



- 1 With unit on, tap **MODE** button until **Fan** indicator lights up.
- 2 Tap **FAN SPEED** button to select High / Low fan speed.

\* In Fan mode, temperature cannot be adjusted.

## Dry Mode




- 1 With unit on, tap **MODE** button until **Dry** indicator lights up.
- 2 Unscrew the drain outlet, insert the drain hose, and lead the other end to a container or drain.

\* In Dry mode, temperature and fan speed cannot be adjusted.

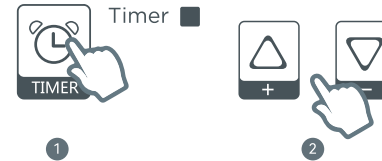
## Smart Mode



- 1 With unit on, tap **MODE** button until display screen cycles  to enable Auto mode.
- 2 Tap **FAN SPEED** button to select High / Low / Auto speed.

\* In Smart mode, the unit will automatically run in Cool or Fan mode based on the room temperature.

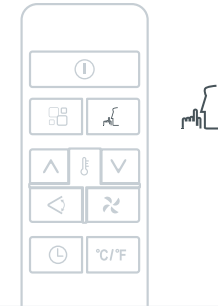
## Auto ON/OFF Timer



- 1 With unit off or on, tap **TIMER** button, **Timer** indicator lights up.
- 2 Tap **+/-** button to set a desired time (0.5~24H) to turn on or off the unit automatically.

\* To cancel timer setting, tap **TIMER** button again. Timer indicator turns off indicating a canceling success.

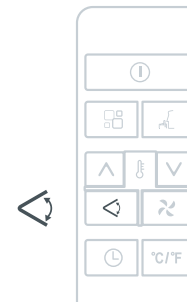
## Sleep Mode



While in Cool / Dry / Smart mode, press **SLEEP** button on the remote control to turn on Sleep mode. The unit will maintain an optimal temperature in low speed with display of 50% brightness.

\* Sleep mode is not available in Fan mode. To cancel, press **SLEEP**, **MODE** or **FAN SPEED** button.

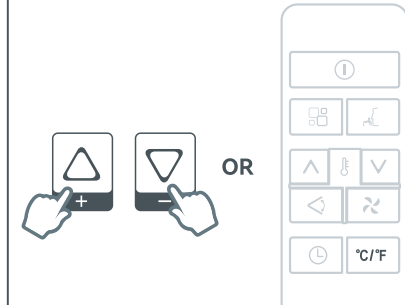
## Swing (Airflow Direction)



With unit on, press **SWING** button on the remote control. The louver will swing continuously up and down. Press this button again to stop at desired airflow direction.

\* DO NOT manually adjust the air outlet louver. Adjust with remote control only.

## °C / °F Switching

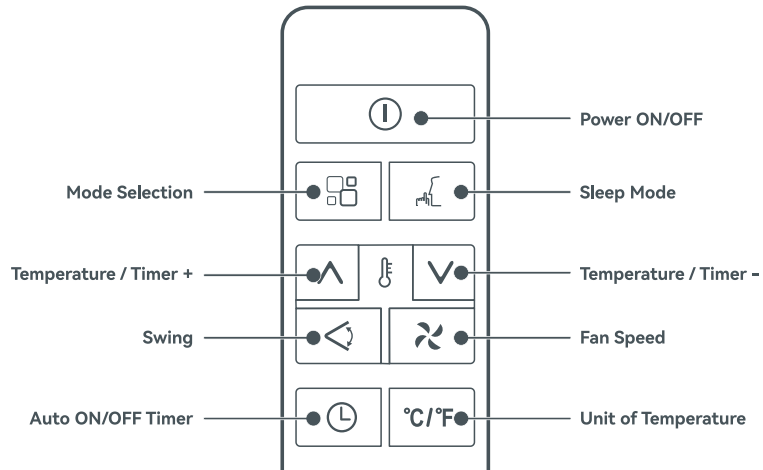


With unit on, hold **+** and **-** buttons on the control panel simultaneously or press **°C/°F** button on the remote control to switch the unit of temperature.

## Using with Remote Control



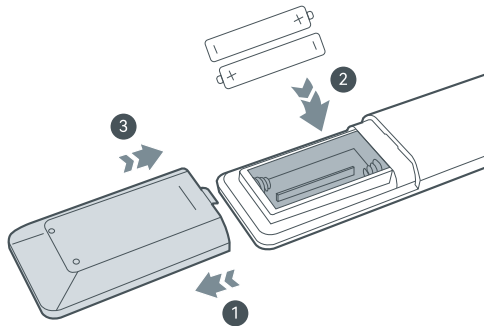
Sleep and Swing features are only available on the remote control. Other buttons are functioned in the same manner as the control panel. (Effective range: 23 ft. / 7 m.)



## Installing & Replacing Batteries



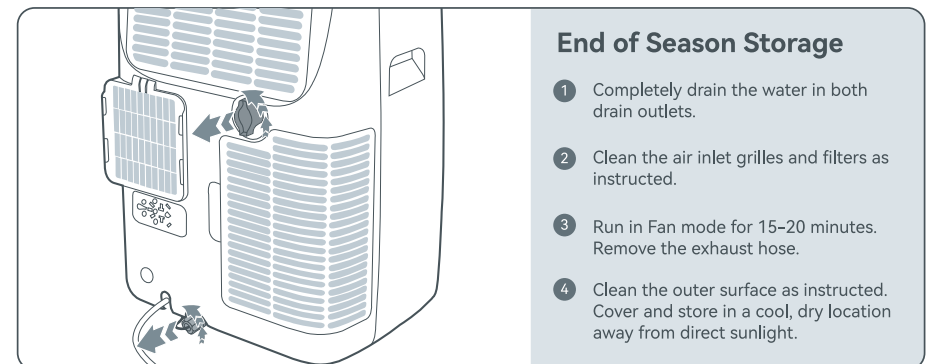
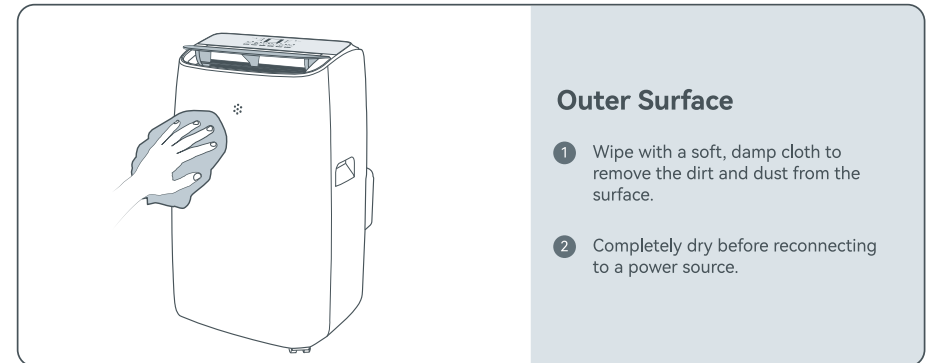
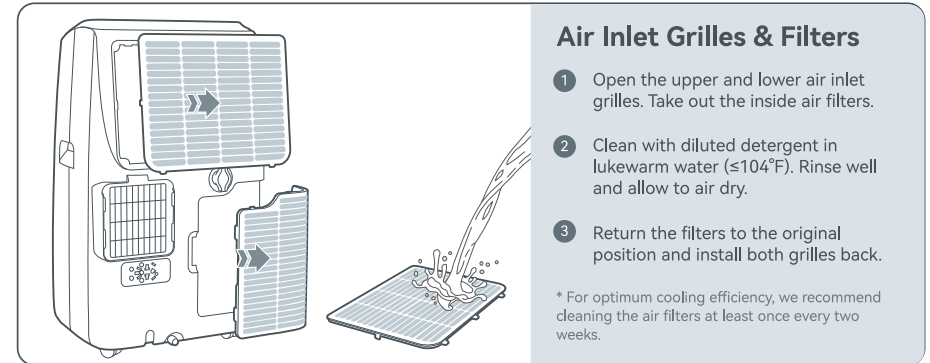
- Install or replace with new batteries of the same type (AAA Alkaline) when necessary.
- When not using the remote control for extended period of time, take out the batteries.
- DO NOT attempt to dismantle the batteries.
- DO NOT dispose the batteries in fire, batteries may explode or leak.



## CARE AND CLEANING



- Always make sure the air conditioner is turned off and unplugged before cleaning.
- DO NOT clean with abrasive chemicals, cleaning agents or solvents.
- Never immerse in water or allow water to drip into the motor housing.



# TROUBLESHOOTING GUIDE



The troubleshooting guide addresses the most common problems. If problems persist, feel free to contact the Customer Support with your order ID at [support@vagkrihome.com](mailto:support@vagkrihome.com)

## Q: F<sub>L</sub> or P<sub>F</sub> code on display.

- A:**
- **F<sub>L</sub>** – Water tank full when cooling. Turn off the unit, drain the water from both drain outlets and restart.
  - **P<sub>F</sub>** – Temperature sensor error. Contact our Customer Support for help.

## Q: The unit does not start after pressing ON/OFF button.

- A:**
- Check if the air conditioner is properly connected to a powered electrical outlet.
  - Drain the water from both drain outlets and restart.
  - Press RESET button on the safety plug. If the power trips off again, contact our Customer Support.

## Q: Not cool enough.

- A:**
- The doors or windows are not closed. Make sure all the windows and doors are closed.
  - Make sure the exhaust hose is properly connected and not blocked.
  - The air inlets are blocked. Turn off the unit and clean the inlets and filters as instructed.
  - The temperature is too high. Set to a lower temperature.
  - There are heat sources inside the room. Remove if possible.
  - For optimum cooling efficiency, avoid using in a room that is too large and try not to place the unit too close to the window with direct sunlight.

## Q: Noisy when cooling.

- A:**
- Make sure the air conditioner is placed upright on a flat, level surface with at least 20 inches of clearance on the back.
  - Make sure the exhaust hose is properly connected.
  - The air inlets are blocked. Turn off the unit and clean the inlets and filters as instructed.
  - Sound from the flowing refrigerant inside the air conditioner. This is normal. If too loud, set to a lower fan speed.

## Q: Window sliders do not fit my window.

- A:**
- If the window sliders are too long, cut to fit your window. Or tell us the actual size of your window, we will send you a free new set of window sliders.

## Q: Water leaks.

- A:**
- Place the air conditioner on a firm, level surface.
  - Try to insert the drain hose into the continuous drain outlet to drain the water.

## Q: Power trips off.

- A:**
- Try another outlet. Do not share the outlet with other electrical appliances.
  - Plug in again after the voltage returns stable.
  - Unplug and check if the outlet is burnt or sparks.

## Q: Air conditioner not received or no refund received after returned to Amazon.

- A:**
- The air conditioner is delivered by Amazon. We recommend that you contact Amazon first for delivery or refund problems.

## Q: Product return or refund.

- A:**
- Please keep the original package and provide us photos or videos regarding the quality issue. We will check and reach out to you.

# WARRANTY AND SERVICE



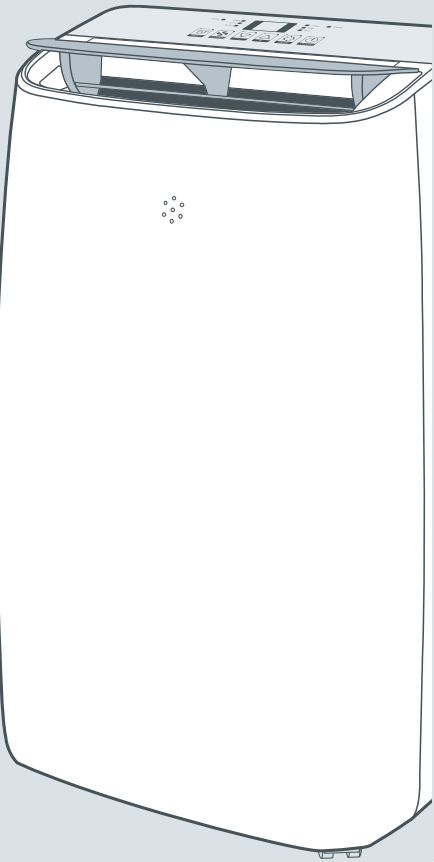
Thank you for choosing VAGKRI Portable Air Conditioner. This product is covered with VAGKRI product and labor warranty for 12 months from the date of its original purchase.

## The warranty will not apply in cases of:

- Accident, misuse, or repairs performed by unauthorized personnel.
- Any unit that has been tampered with or used for commercial purpose.
- Normal wear and tear of wearable parts.
- Use of force, damage caused by external influences.
- Damage caused by non-observance of the User Manual, e.g. connection to an unsuitable mains supply or non-compliance with the instructions.
- Partially or completely dismantled appliances.
- Defects caused by or resulting from repairs, service, or alteration to the product or any of its parts that have been performed by a repair person not authorized.

We can only provide after sales service for products that are sold by VAGKRI or VAGKRI authorized retailers and distributors. If you have purchased your unit from a different place, please contact your seller for return and warranty issues.

**\* Please have your order ID ready before contacting Customer Support.**



# WARNING FOR USING R32 REFRIGERANT

- When defrosting or cleaning the appliance, do not use any tools other than those recommended by the manufacturer.
- The appliance must be placed in an area without any continuously sources of ignition (open flames, gas, or electrical appliances in operation, etc).
- Do not puncture and do not burn.
- R32 is a refrigerant gas that complies with the United States directives on the environment. Do not puncture any part of the refrigerant circuit.
- If the appliance is installed, operated, or stored in an unventilated area, the room must be designed to prevent to the accumulation of refrigerant leaks resulting in a risk of fire or explosion due to ignition of the refrigerant caused by electric heaters, stoves, or other sources of ignition.
- The appliance must be stored in such a way as to prevent mechanical failure.
- Individuals who operate or work on the refrigerant circuit must have the appropriate certification issued by an accredited organization that ensures competence in handling refrigerants according to a specific evaluation recognized by associations in the industry.
- Repairs must be performed based on the recommendation from the manufacturer. Maintenance and repairs that require the assistance of other qualified personnel must be performed under the supervision of an individual specified in the use of flammable refrigerants.

## Explanation of Symbols On the Unit

	<b>WARNING</b>	This symbol indicates that this appliance used a flammable refrigerant. If the refrigerant is leaked and exposed to an external ignition source, there is a risk of fire.
	<b>CAUTION</b>	This symbol indicates that the user manual should be read carefully.
	<b>CAUTION</b>	This symbol indicates that a service personnel should be handling this equipment with reference to the user manual.
	<b>CAUTION</b>	This symbol indicates that information is available such as the user manual.