

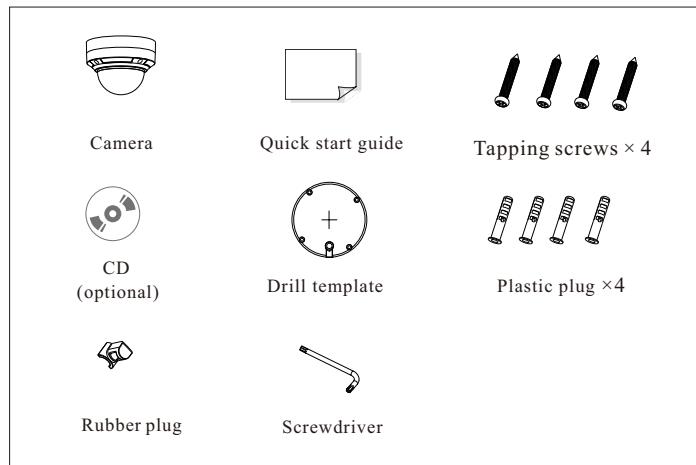
Network Camera Quick Start Guide

- Please read this instruction carefully before operating the unit and keep it for further reference.
- All the examples and pictures used here are for reference only.
- The contents of this manual are subject to change without notice.

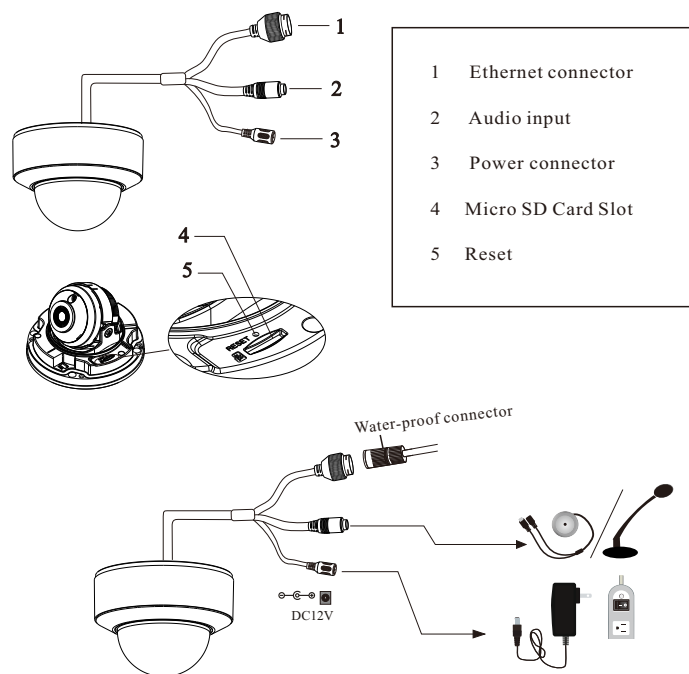
1 Warning and Caution

- If the product does not work properly, please contact your dealer or the nearest service center. Never attempt to disassemble the camera yourself. (We shall not be responsible for any problems caused by unauthorized repair or maintenance.)
- Do not allow water or liquid intrusion into the camera.
- In the use of the product, you must be strict compliance with the electrical safety regulations of the nation and region. When the product is mounted on wall or ceiling, the device shall be firmly fixed.
- Do not use camera beyond specified voltage range.
- Do not drop the camera or subject it to physical shock.
- Do not directly touch the camera when installing.
- The product must be grounded to reduce the risk of electric shock.
- You must wear anti-static gloves or discharge static electricity before removing the lower dome.
- Avoid touching the camera lens.
- If cleaning is necessary, please use clean cloth to wipe it gently.
- Avoid aiming the camera directly towards the sun or other bright objects.
- Do not place the camera in extremely hot, cold (the operating temperature shall be $-30^{\circ}\text{C}\sim 60^{\circ}\text{C}$), dusty or damp locations, and do not expose it to high electromagnetic radiation.
- To avoid heat accumulation, good ventilation is required for operating environment.

2 Package



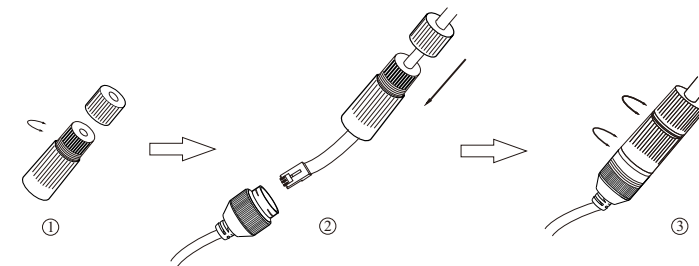
3 Overview



* 1 It is recommended to install the water-proof connector for outdoor installation.

* 2 Hold and press the reset button for 10s to reset to the factory default setting after the device is started.

• Connecting Network Cable



① Loosen the nut from the main element.

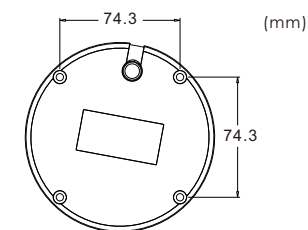
② Run the network cable (without RJ 45 connector) through the both elements. Then crimp the cable with RJ 45 connector.

③ Connect the cable to the Ethernet connector. Then tighten the nut and the main cover.

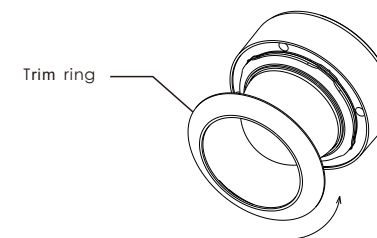
4 Installation

Please make sure that the wall or ceiling is strong enough to withstand 3 times the weight of the camera. Please install and use the camera in a dry environment. You'd better install back the lower dome less than 4 hours after removing it. Do not remove the protection film until finishing the installation.

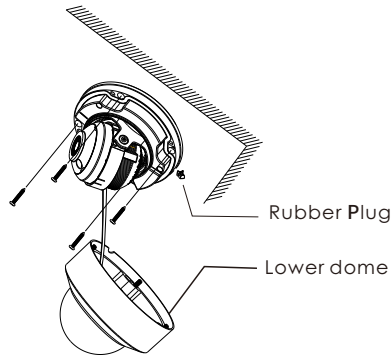
① Attach the drill template to the place where you want to fix the camera and then drill the screw holes and the cable hole on the wall according to the drill template.



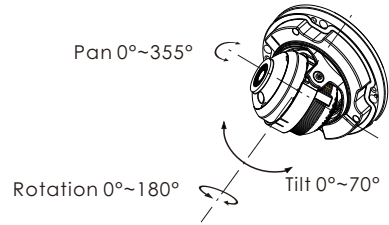
② Rotate the trim ring anticlockwise to remove it from the camera.



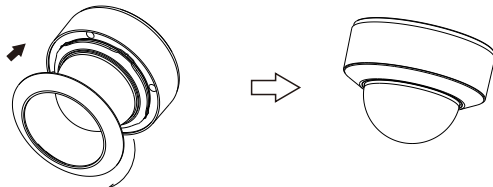
- ③ Loosen the screws to open the lower dome.
- ④ Route and connect the cables.
- ⑤ Secure the camera to the wall with screws provided as shown below.



- ⑥ Three-axis adjustment. Before adjustment, view the image of the camera on a monitor and then adjust the camera according to the figure below to get an optimum angle.



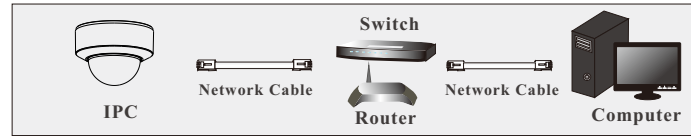
- ⑦ Install the lower dome back to the camera and fix it with the screws. Then put the trim ring onto the lower dome and then rotate it clockwise until it is locked.



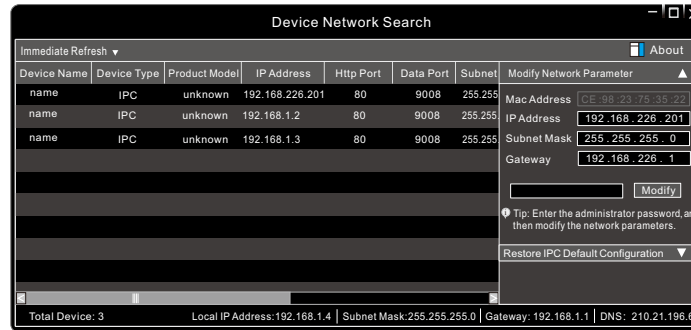
5 Network Connection

Here we take accessing IP camera via LAN for example.

• Access Through IP-Tool



- ① Make sure that the camera and the PC are well connected to the LAN.
- ② Get the IP-Tool from the supplier and then install it in the computer. After that, run the IP-Tool as shown below.



- ③ Double click the camera information listed in the IP-Tool to open the web browser.

The default IP address of this camera is **192.168.226.201**.

Then follow directions to download and install the plugin if prompted.

- ④ Activate and log in the camera. The default username is **admin**; the default password is **123456** or you need to self-define the password. Please operate according to the actual situation.

Tips

Transparent Dome Maintenance

Transparent dome is an optical element which is made of plastics. As dirt, dust or fingerprints on the dome will reduce the clarity of the image, please keep it clean in the course of installing or using but do not directly touch or wipe it. If there is any dirt or dust, please follow these cleaning tips to clean your dome camera.

- * If there is dust on the dome, please use a dry soft brush to gently brush it.
- * If there is water or grease on the dome, please gently wipe off the water or grease with a soft cloth. Then use another clean cloth with a little neutral detergent to wipe it several times until it is clean. Finally, dry it with a soft cloth.
- * If there are fingerprints on the dome, please use a clean cotton cloth with a little neutral detergent to wipe it several times and then dry it with a soft cloth.