

TURNTABLE RECORD PLAYER INSTRUCTIONS

Model No: TE-003



Turntable with Bluetooth reception and wooden speakers

User Manual

Questions, problems, missing parts? CONTACT -----support25@163.com

Before returning to Amazon, please use above contact for Customer Service.

Instructions Before Start

Please Read the Manual Before Using this product. Keep these instructions for future reference.

About Records Applied

1. Do not use this product near water.
2. Never use a record with cracks or warps.
3. Never use a record that is cracked or warped, as this may cause extreme wear and destruction of the needle.
4. Never use unusual play methods such as scratching. This unit is not designed for such playback.
5. Do not expose the unit to direct sunlight, high temperature or high humidity. This may cause warping or deformation. When holding the record, hold only the label or the outer edge.
6. Do not touch the record groove. Dust and fingerprints may cause distortion of the sound. Care of the record
7. Use a special record cleaner and cleaner solution (sold separately). Wipe the record cleaner in a circular motion along the record groove.

About Built-in Bluetooth

1. The Bluetooth devices used in this unit use the same frequency band (2.4GHz) as wireless LAN devices (IEEE802.11b/g/n), so if they are used near each other, they may interfere with each other, resulting in reduced communication speed or connection failure. In this case, please use it as far away as possible (about 10m).
2. We do not guarantee the connection with all Bluetooth devices.
3. Also, depending on the conditions, it may take some time to connect.

Main Features

- 3 speed turntable plays 33 1/3, 78, and 45 rpm records;
- Auto stop function
- Supports Bluetooth Input
- Aux Line-in
- External stereo speakers
- RCA stereo audio outputs
- Volume Control/ON & OFF Power
- 3.5mm Headphone Jack
- Vinyl Recording via PC

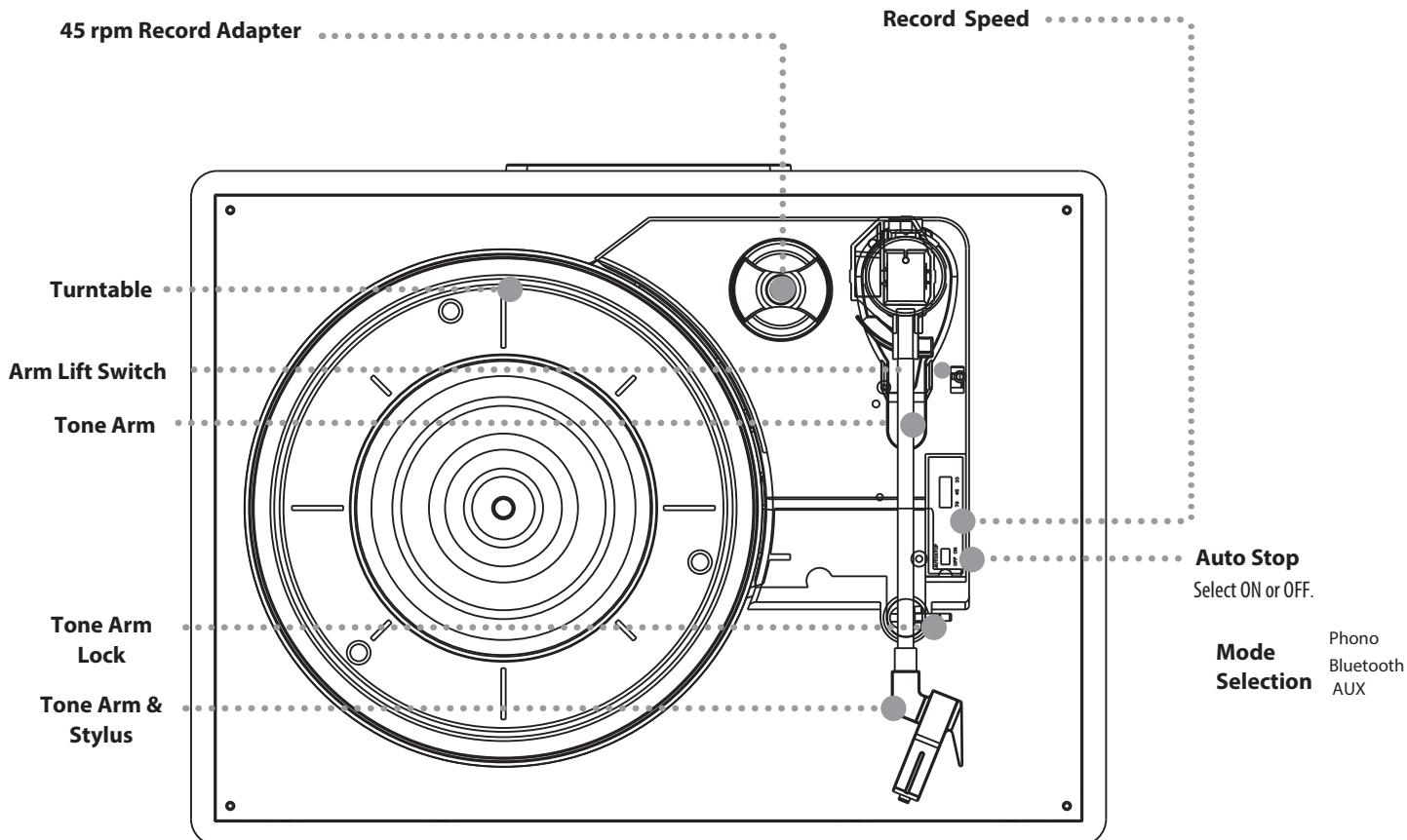
Accessories Includes

- 45 rpm adapter
- 2x Stylus(one installed)
- AC power adapter
- 7-inch Turntable mat
- User's quick guide
- User's manual

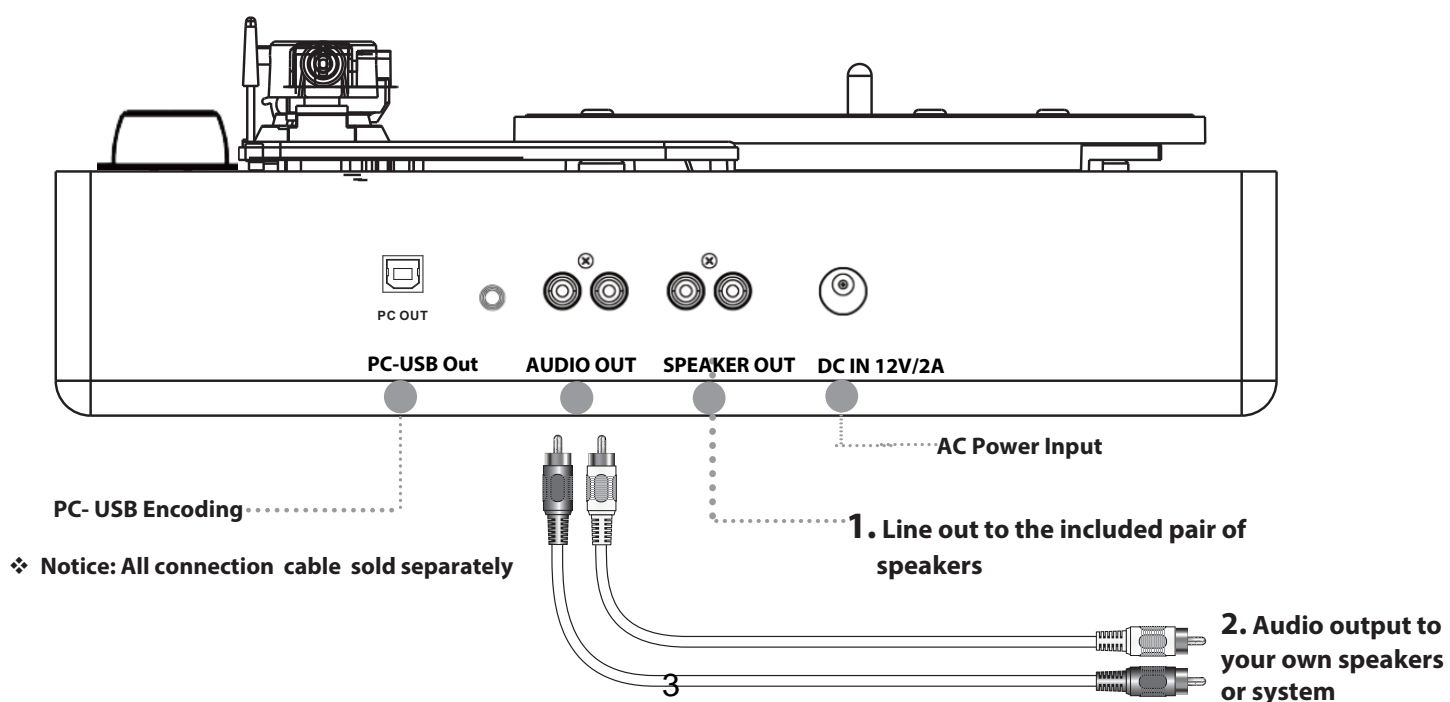
PARTS ILLUSTRATION:

Orientation

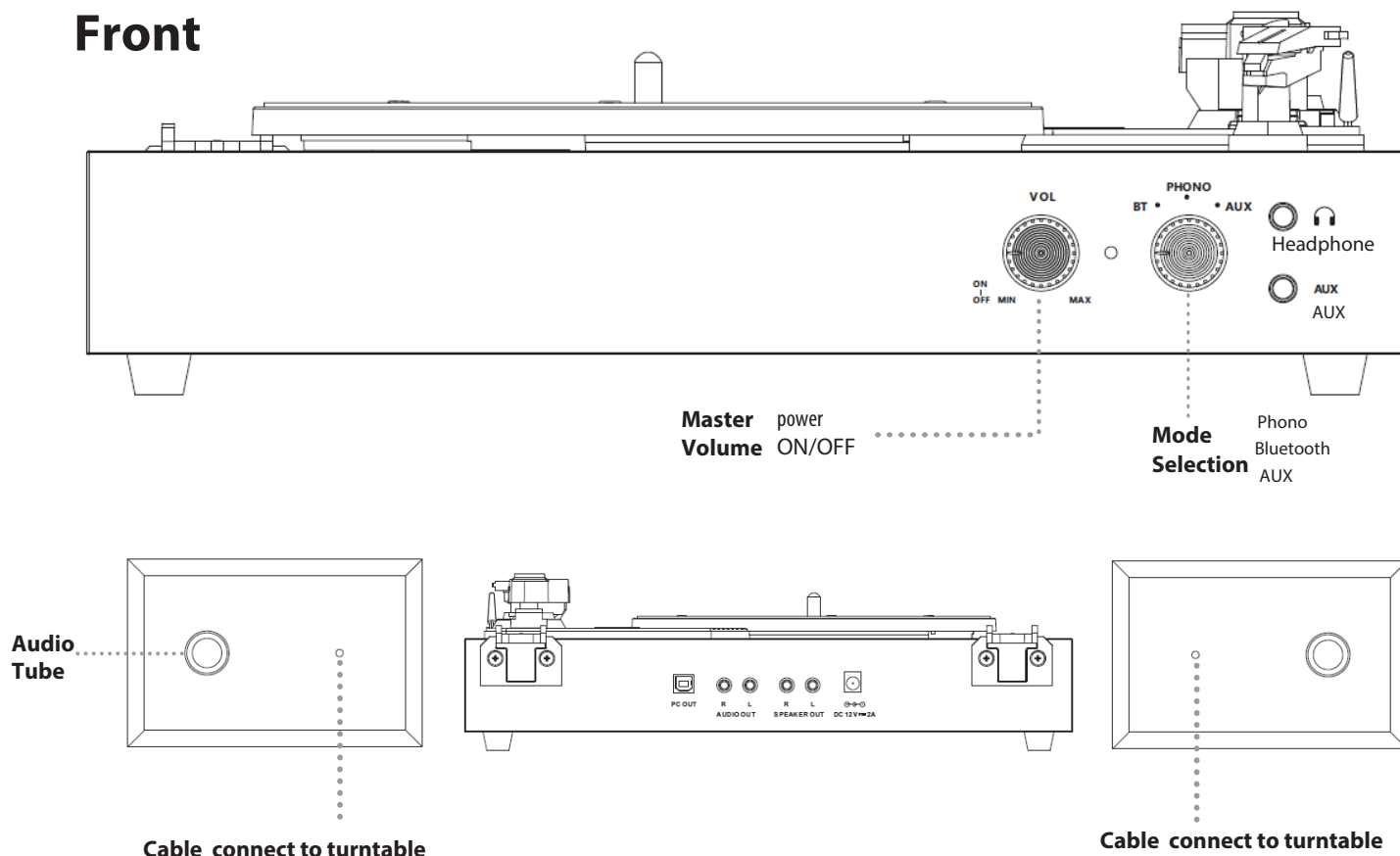
Choose 33, 45, or 78, depending on the type of record to be played.



Rear Inputs



Front

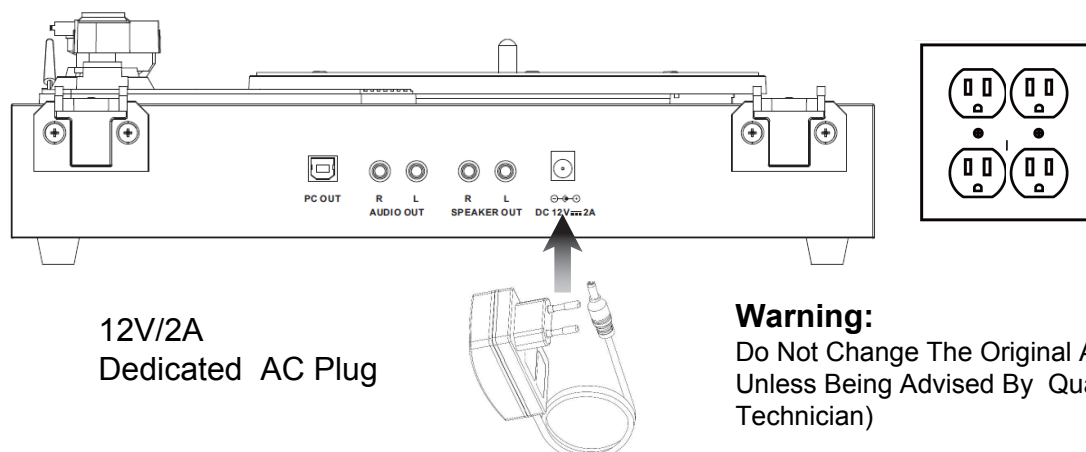


Remark: To avoid Larsen effect or echo noise, you can do the following:

1. Put your speakers at minimum distance of 60 cm or more from your turntable.
2. Let the dustcover open when you play a record at higher sound volume.
3. Keep the back of the speakers at minimum distance of 10 cm from from your wall.

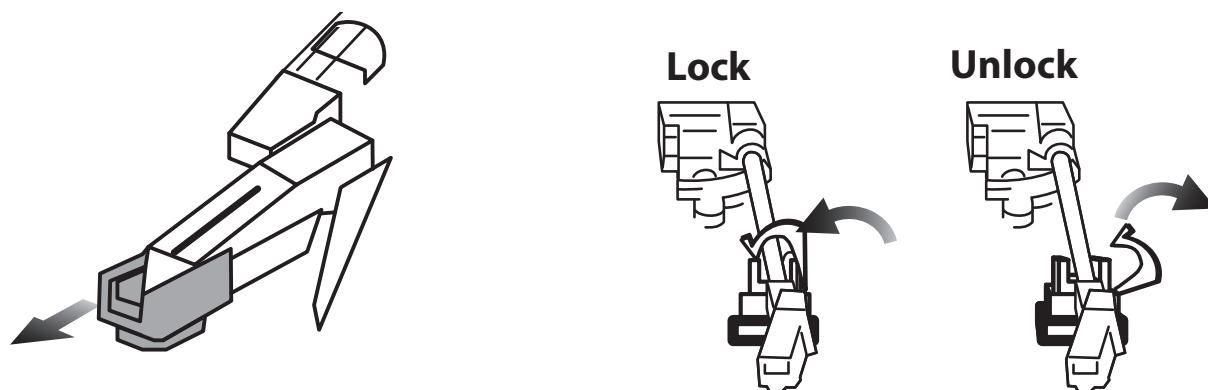
SET UP

1. An AC/DC adaptor with an output of 12V DC 2.0A is included with this Turntable with Bluetooth reception and Wooden Speakers. The adaptor is required for operating the unit.
2. Connect the speaker cables from each speaker to the back of the unit (**White jack to White hole, Red Jack to Red hole**)
3. Firmly and securely insert the DC plug of the adaptor to the DC IN Jack on the back of the unit.
4. Plug the adaptor's AC plugs into a power outlet rated at 110-240V AV ~ 50 Hz.
5. Turn on the unit by the POWER/VOLUME Knob. The Power Led Light Indicator will turn on.

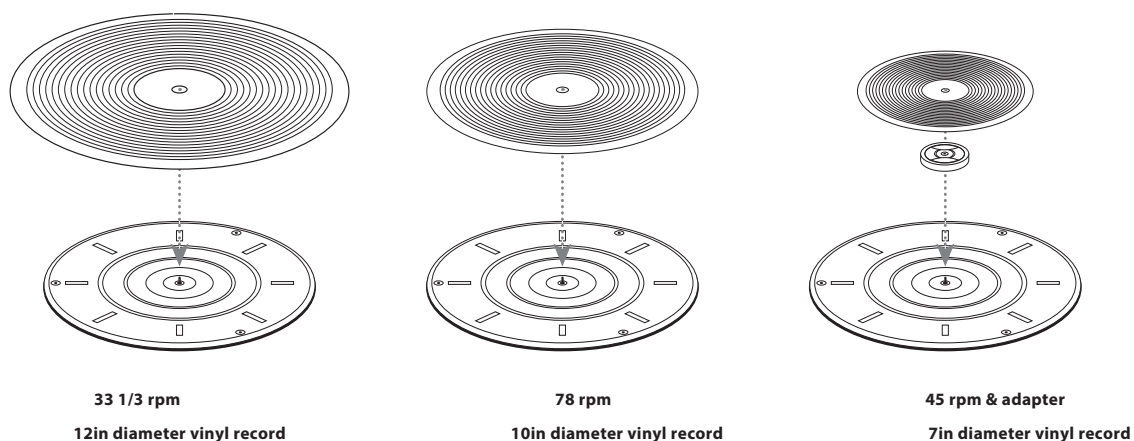


Operation---Listen to a Record

It is recommended that you use extreme care when manipulating the tone arm, stylus, and other components of this turntable. These parts are very sensitive and can easily break or become damaged if they are carelessly handled.

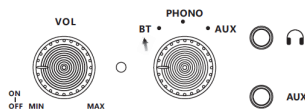


1. Turn the the Volume and power button clockwise till the LED indicator lights up, if not, check the power and adapter.
2. Turn the mode selector button aim to "PHO" on the control panel. Or once you place the tone am on the vinyl, the turntable will switch to vinyl mode and Bluetooth mode will automatically be disabled if you are using "BT" mode .
3. Remove the shroud that protects the stylus, and release the lock that holds the Tone Arm in it's resting position.
4. Before use, turn the turntable clockwise about 10 times by hand to make sure there is no belt shift or kinks from the pulleys.
5. Select the correct turntable speed based on the type of record you wish to play, and place the record on the turntable. **If you are playing a 45 rpm record**, use the included adapter and place it between the turntable and the record.
6. Use the **Tone Arm Lift Switch** to raise the **Tone Arm** from its catch.
7. Using your hand, *gently* swing the **Tone Arm** into the desired location over the record. The turntable will start spinning as the Tone Arm is moved into position.
8. Use the **Tone Arm Lift Switch** to safely lower the stylus onto the record.
Using the Lift Switch instead of your hand will reduce the chance of accidentally damaging the record or the stylus.
9. Slide the **Auto Stop Switch** to **ON** to enable the Auto Stop feature. When the record is finished playing, it will automatically stop the turntable. Use the **Lift Switch** to raise the stylus off of the record, and *gently* return the Tone Arm to the catch by hand.
Note: Some records place their Auto Stop area outside of the range of this unit. In these cases, the record will stop playing before the last track is reached. Set the Auto Stop Switch to OFF and use the Tone Arm Lift Switch to safely raise the stylus off the record when the end of the record has been reached.
10. When not in use, secure and lock the Tone Arm in its resting position and replace the protective shroud over the stylus. This will minimize the risk of accidental damage to these sensitive parts.



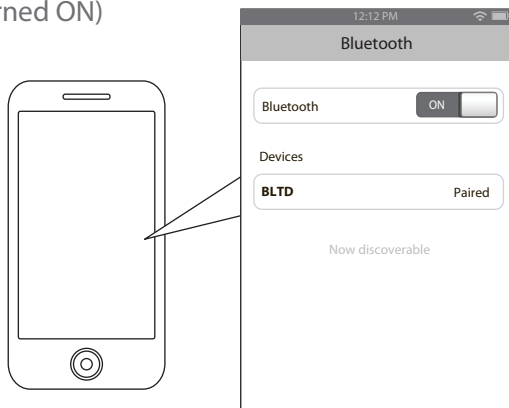
Bluetooth--- pairing with bluetooth

1. Turn on the the ON/OFF /Volume button to power on, turn the mode selector button aim to "**BT**" on the control panel.
2. Using the controls on your Bluetooth device, search for and select "**BLTD**" in your Bluetooth settings to pair. If your device requests a password, enter the default password **0 0 0 0** and and press OK.
3. When successfully paired and connected, an audible chime will sound. After initial pairing, the unit will stay paired unless unpaired manually by the user or erased due to a reset of the device. If your device should become unpaired or you find it is unable to connect, repeat the above steps.
4. After pairing to a Bluetooth device, use the controls on your connected Bluetooth Device to select a track.



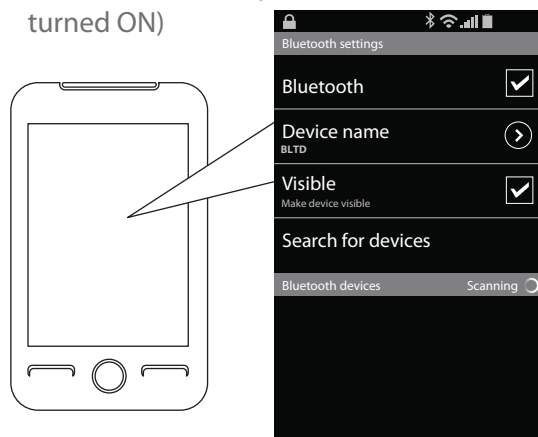
On an iPhone

- Go to **SETTINGS > BLUETOOTH**
Search for devices (Make sure Bluetooth is turned ON)



On an Android Phone

- Go to **SETTINGS > BLUETOOTH**
Search for devices (Make sure Bluetooth is turned ON)

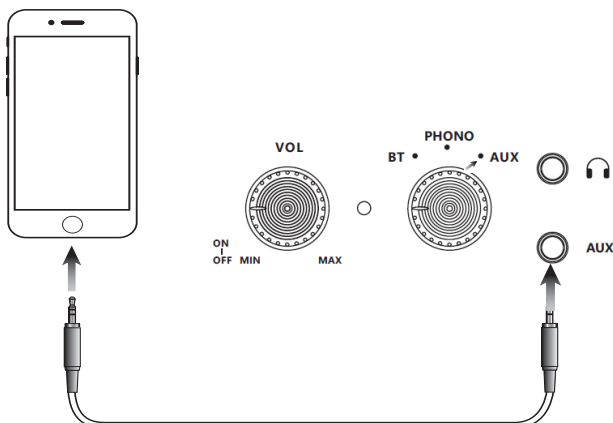


LINE-IN---Listen to auxiliary input

Requires 3.5 mm audio input cable (not included).

Note: When the Source selector is set to Aux In, When a 3.5mm audio cable is plugged into the unit, it will automatically detect the input and power ON in Aux In mode.

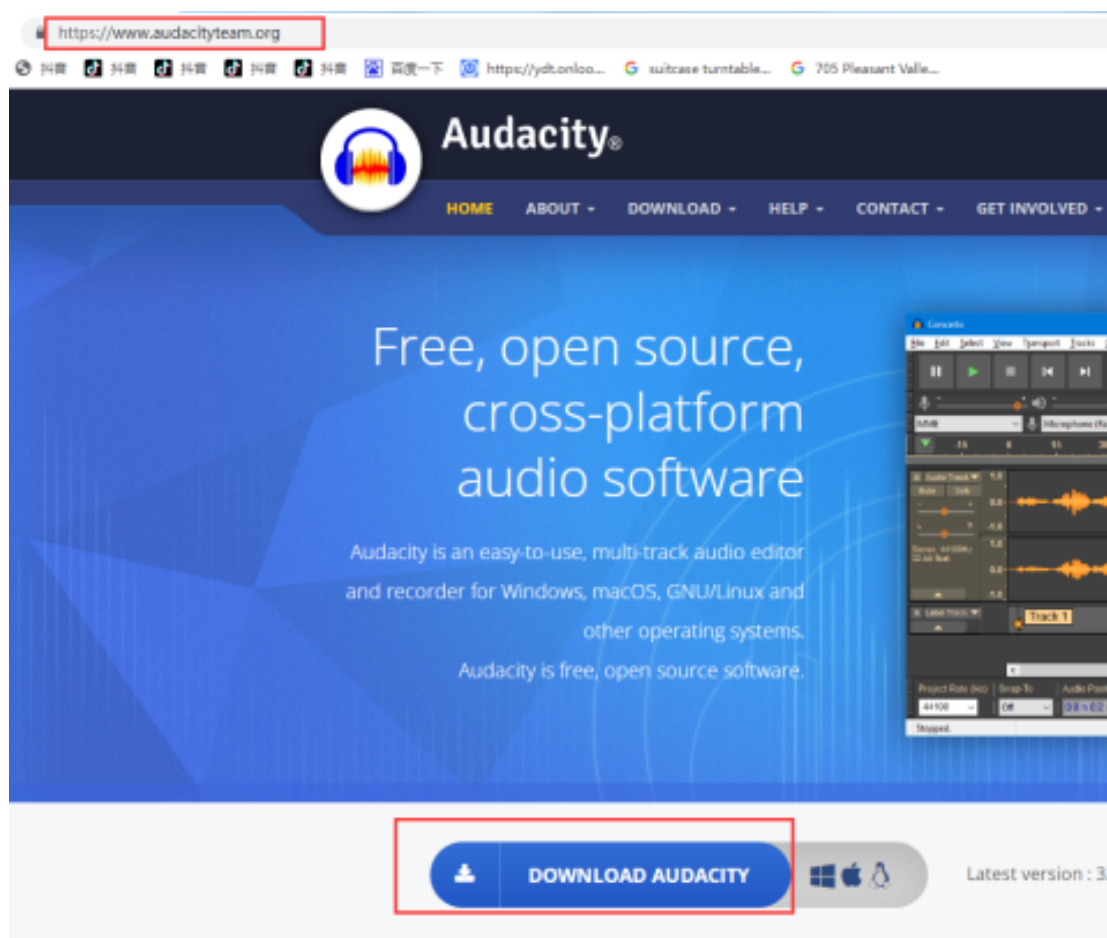
1. Turn the mode selector button aim to "**AUX**" on the control panel.
2. Plug a 3.5 mm audio input cable into the "**AUX**" on the unit and the audio output/headphone output on an MP3 Player or other audio source.
3. Use the controls on your connected music player to select and play audio.
4. Audio played through the connected device will now be heard through the speakers.



PC record--- recording vinyl to MP3 via PC

Installing the software

1. Download the Audacity software on your computer or laptop from official website (www.audacityteam.org)




2. Double click the downloaded files and follow the instructions and the software will automatically install as below

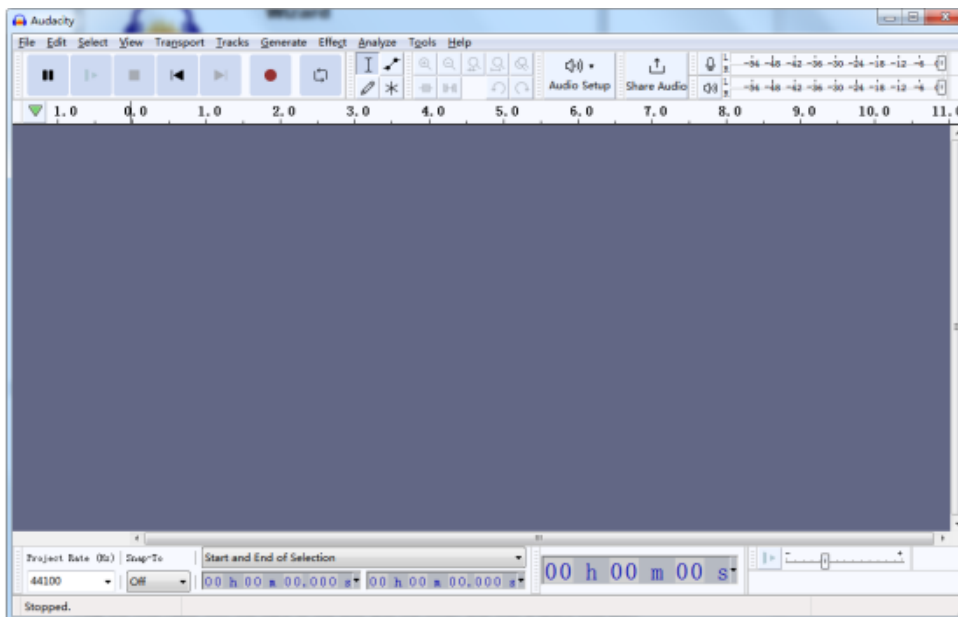
- Click ALL the 'Next' or "Install" options that follows till the "Finish" button appears



3. Click on '**Finish**' to complete the installation



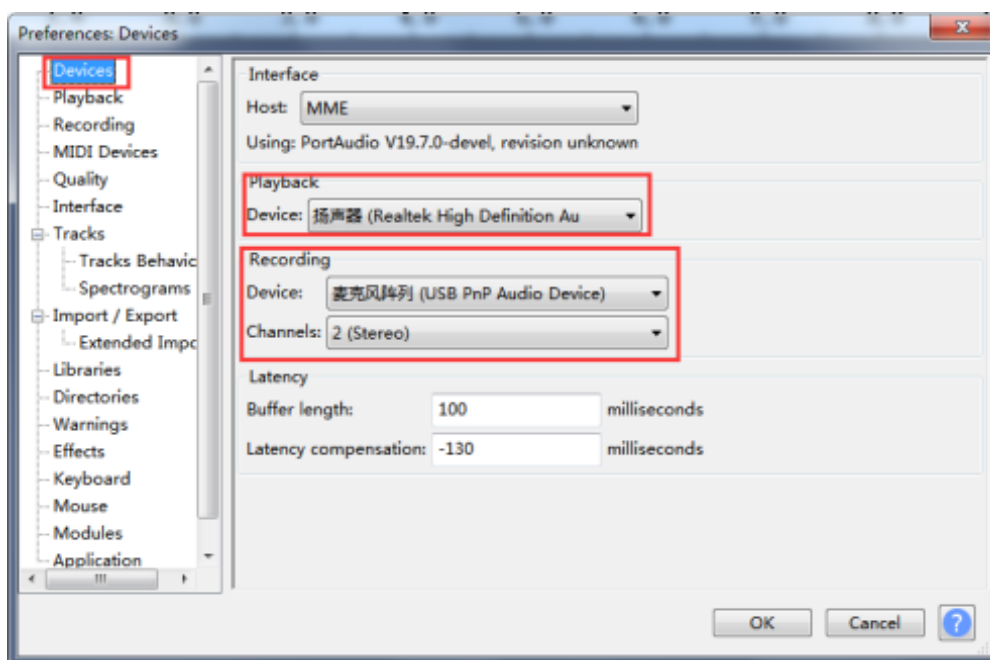
4. Audacity should automatically start up (The Audacity icon  will now be seen on the desktop, double click on it to start Audacity running if it not start up automatically)



Note: If an icon does not appear, go to the 'C' drive under 'My Computer', click on 'Program files' and then 'Audacity'. Right click on the 'orange ball wearing Headphones' icon and select 'Send to' then 'Desktop (create shortcut)'.

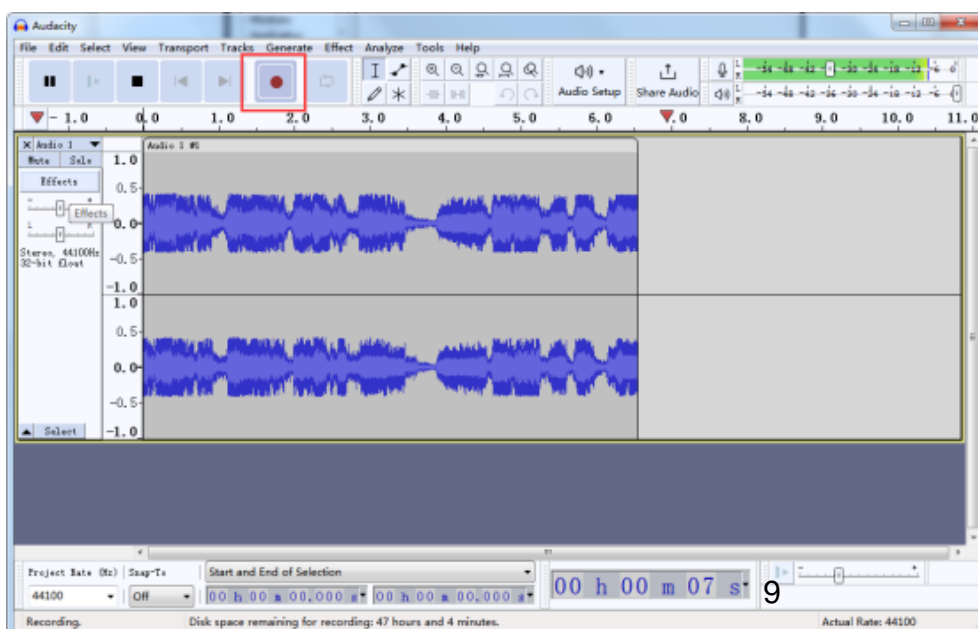
Using the Audacity software

- Plug the USB cable (cable included in the package) into the back of the unit and the other end into a spare USB port on your computer.
- Run the Audacity software by double clicking the Audacity icon.
- Before recording, click on Edit at the top of the main page; select Preferences at the bottom of the menu which will open up Preferences.
- At the recording part of the window open the Device menu by using the down arrow on the right hand side. Select the 'Realtek High Definition Au' option from the Playback sub menu. Select the 'USB PnP Audio Device' option from the 'Recording - Device' sub menu. The lower box enables the number of recording channels to be set, 1 is Mono and 2 is Stereo, select the Stereo option.
- Click 'OK' once the options have been selected



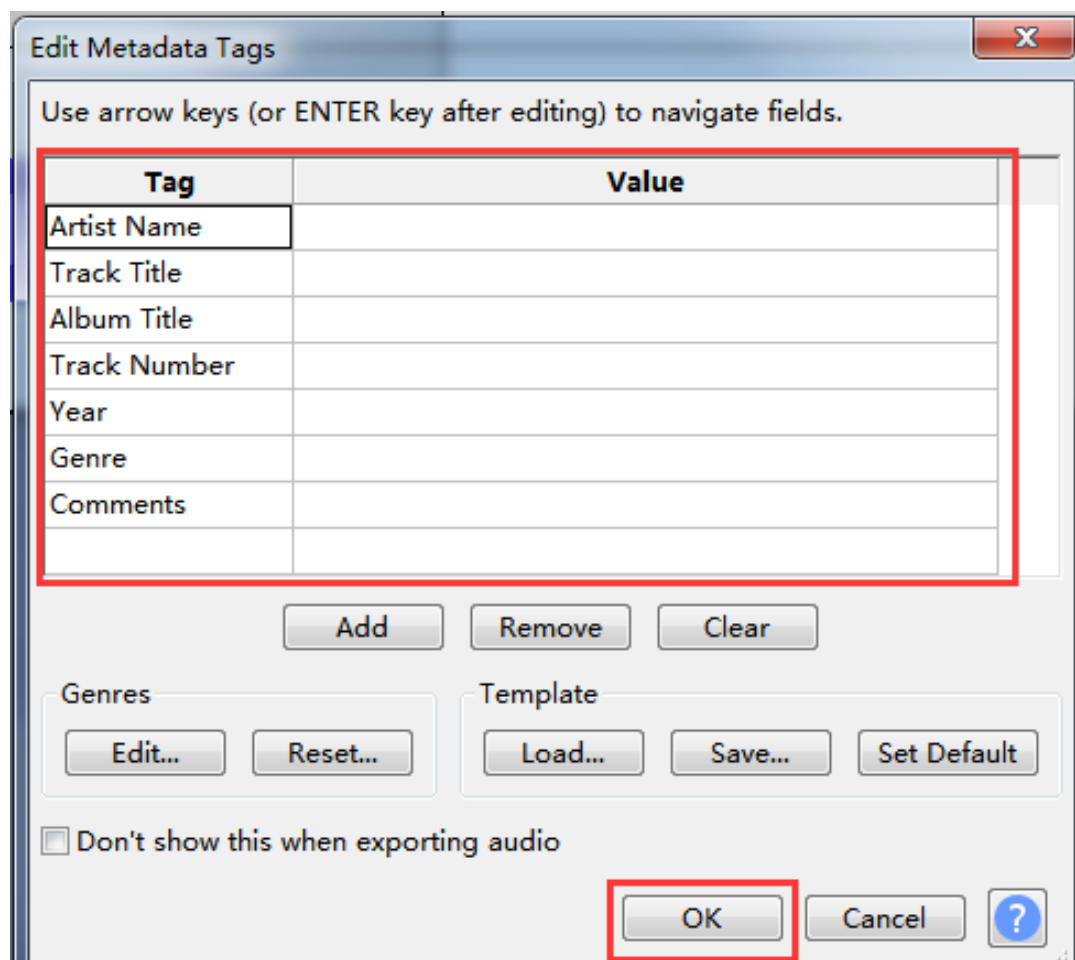
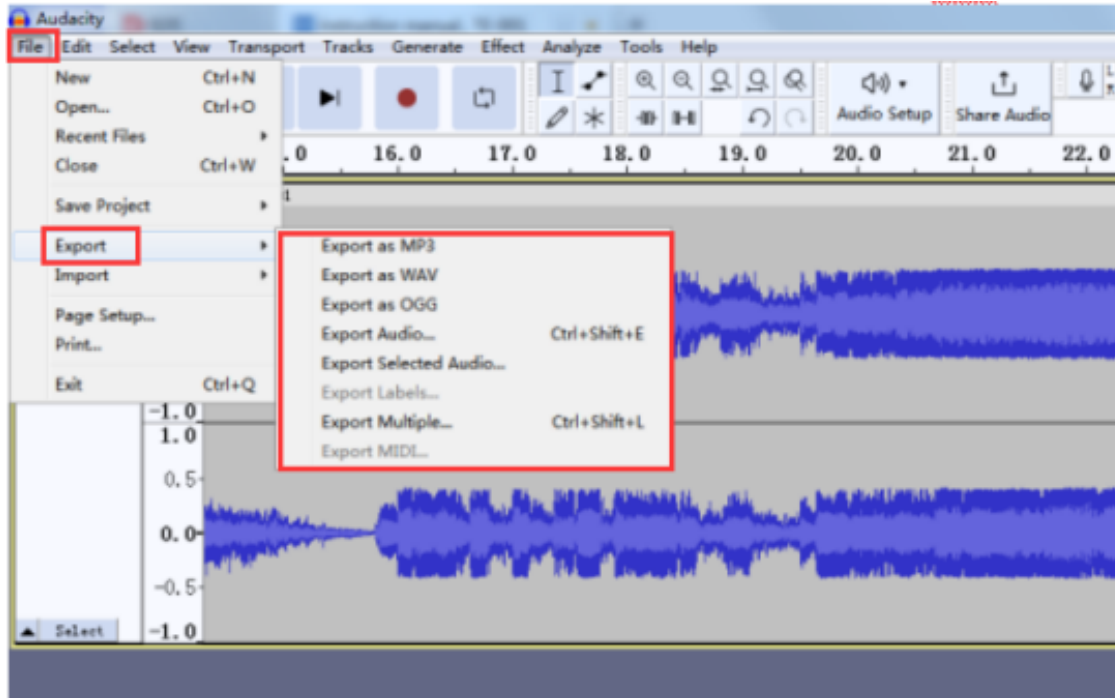
Recording to computer using Audacity

- Start the record playing as described above, and press Record icon (red dot) on the left corner of the window to start recording to the computer.
- Once recorded use the buttons on the Transport controls at the top of the screen to Pause, Play, Stop, Go to Start, Go to end and Record of Wav. audio form.
- Use the file, Edit, Select, View, Transport, Tracks, Generate, Effect, Analyze, Tools, Help menus to Save, Export and edit your music and save.



Exporting your music files to other devices

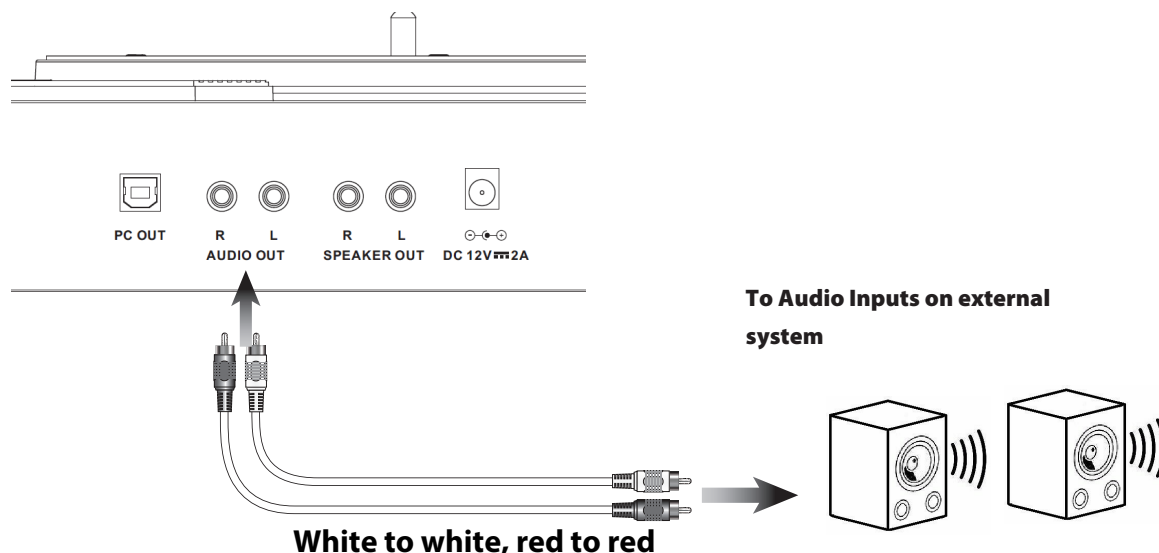
- Once you have recorded and edited your music, you will need to save your files to the computer. To do this, click on "File" option and move down to "Export" option as to save as MP3/WAV... .
- It can be saved to an existing one or a new folder.
- Click on this and you will promptly be asked for the file name and other information of the music recorded which will be saved in the local for reference.\
- You can find the recording music from your saved folder and playback.



RCA Audio Output

Requires RCA audio cables (red/white, not included). Use to connect the turntable to an external stereo, television, or other source.

1. Connect RCA audio cables to the **RCA Audio Output** on the back of the turntable, and to the **audio input** of an external stereo system.
2. Adjust the external stereo system to accept input from the turntable.
3. Audio played through the turntable will now be heard through the connected stereo system.



HOW TO REPLACE THE NEEDLE

The durability time of the recoil needle is about 200-250 hours. Replace the needle if necessary.

Remove the Needle

1. Gently pull down the front edge of the needle.
2. Pull needle forward.
3. Pull out and remove.

The stylus needle is universal type and purchasable on Amazon.com.



Installing Needle

1. Position the needle with its tip facing down.
2. Line up the back of the needle with the cartridge.
3. Insert the needle with its front end at a downward angle and gently lift the front of the needle upward until it snaps into place.



Specifications

Turntable	TE-003
Type	Belt drive full manual
Drive Motor	DC motor
Speed	33, 45, 78 RPM
Turntable platter	200mm
Bluetooth	
Version	4.2
Frequency Range	2402MHz to 2480MHz
Maximum Transmission Power	<8dbm
General	
ADAPTOR	input AC100-240V~50/60Hz
	output DC12V-2A
PRODUCT	DC12V-2A
Rated Power Consumption	24W
Dimension	328x248x100mm for main unit; 248x160x100mm for each speaker
Weight	Approx. 4.4 kgs

Electrical information	Value and and precision
Input voltage	120-240V
Input AC frequency	50-60Hz
Output voltage	DC 12V
Output current	2A
Max.Output Power	24W
Average active efficiency	86.66%
Efficiency at low load (10%)	84.42%
No load Power consumption	0.08

FCC Statements

This equipment has been tested and found to comply with the limits for a Class B digital device, pursuant to Part 15 of the FCC Rules. These limits are designed to provide reasonable protection against harmful interference in a residential installation. This equipment generates uses and can radiate radio frequency energy and, if not installed and used in accordance with the instructions, may cause harmful interference to radio communications. However, there is no guarantee that interference will not occur in a particular installation. If this equipment does cause harmful interference to radio or television reception, which can be determined by turning the equipment off and on, the user is encouraged to try to correct the interference by one or more of the following measures:

- **Reorient or relocate the receiving antenna.**
- **Increase the separation between the equipment and receiver.**
- **Connect the equipment into an outlet on a circuit different from that to which the receiver is connected.**
- **Consult the dealer or an experienced radio/TV technician for help.**

This device complies with part 15 of the FCC Rules. Operation is subject to the following two conditions:

(1) This device may not cause harmful interference, and (2) this device must accept any interference received, including interference that may cause undesired operation. Changes or modifications not expressly approved by the party responsible for compliance could void the user's authority to operate the equipment.

RF Exposure Statement

The distance between user and products should be no less than 20cm.



FCC ID: 2A453-TE001

Made In China

AUDMIC INDUSTRIAL LIMITED