

ICOM

INSTRUCTIONS

TRUNKING/NETWORK CONTROLLER

UC-FR5000

PRECAUTIONS

⚠ **WARNING!** Turn OFF the repeater before installing the controller. Otherwise a fire, electric shock may occur, or the repeater could malfunction.

CAUTION: NEVER expose the repeater and controller to rain, snow or any liquids.

CAUTION: NEVER let metal, wire or other objects touch any internal part of the controller.

CAUTION: Install the controller in only the specified repeater.

Be careful! When you install the controller, wear gloves to avoid cutting your hand on the sharp edges of the repeater.

About CE

CE The UC-FR5000 complies with the essential requirements of the 2004/108/EC directive for Electromagnetic Compatibility.

CONFIGURATIONS

The controller enables the repeater to be used for the following modes, depending on the configurations. (This table is shown in controllers whose revision number is 3.5 or later. Ask your dealer for details.)

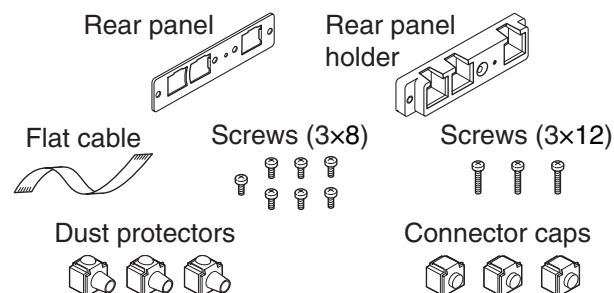
	Single Site		Multi Site	
	Conventional	Trunking	Conventional	Trunking
UC-FR5000#01	✓*1	✓	✓*2	✓*3
UC-FR5000#02 (CF-FR5000MC is installed)	✓	✓	✓	✓*3
UC-FR5000#03 (CF-FR5000MT is installed)	✓	✓	✓	✓
UC-FR5000#04	✓*1	✓	✓*2	✓*3

*1 When the optional RS-FS10 REMOTE COMMUNICATOR is used, either the CF-FR5000MC or CF-FR5000MT is required.

*2 Either the optional CF-FR5000MC or CF-FR5000MT is required.

*3 The optional CF-FR5000MT is required.

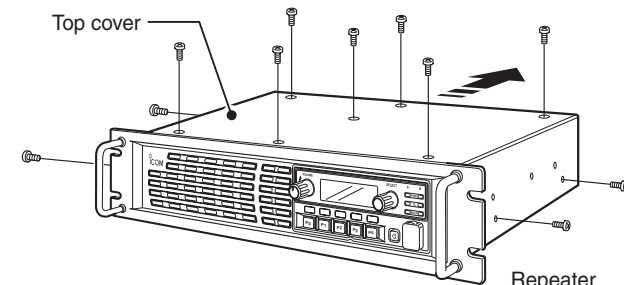
SUPPLIED ACCESSORIES



Thank you for purchasing the UC-FR5000 TRUNKING / NETWORK CONTROLLER. The controller is designed to be installed into the IC-FR5000/IC-FR6000 series VHF / UHF FM REPEATERS and enables the on-line control and digital trunking operation on the repeater. Before installation, please carefully read these instructions and repeater's instruction manual.

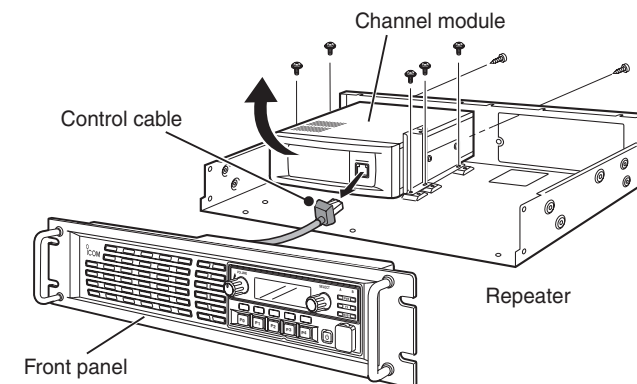
OPENING CASE

- ① Unscrew the seven screws from the top, and the two screws on both sides of the repeater, then slide the top cover off in the direction of the arrow.

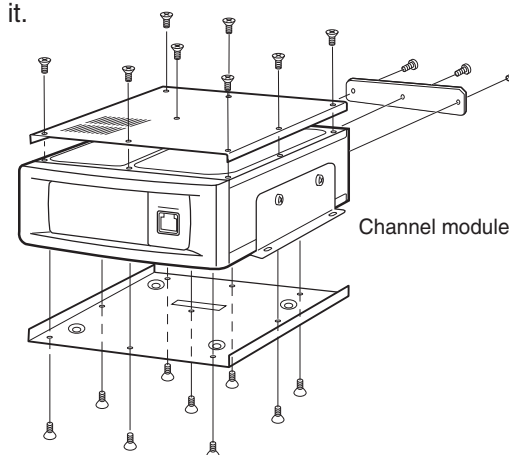


- ② Disconnect the control cable from the channel module. Then, unscrew the seven screws which affix the channel module to the repeater chassis, and remove it.

The front panel is removed in this illustration so the detail is easier to see. You can remove the channel module without removing the front panel of the repeater.



- ③ Unscrew the eight screws from the top, the nine screws from bottom, and the three screws from rear of the channel module. Then remove each cover from it.

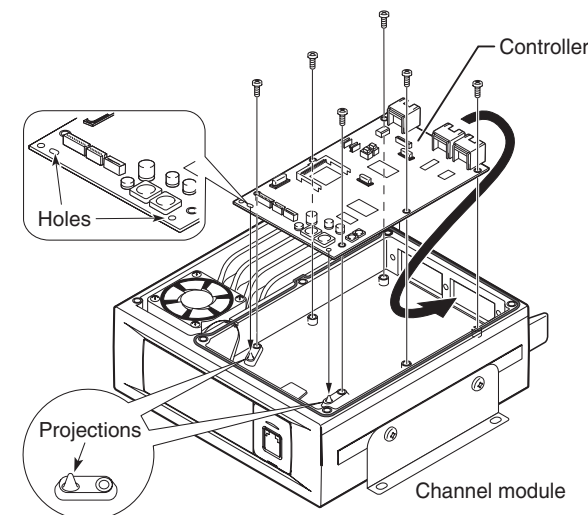


INSTALLATION

• Installing the UC-FR5000

Install the controller into the channel module using six of the seven supplied screws (3x8).

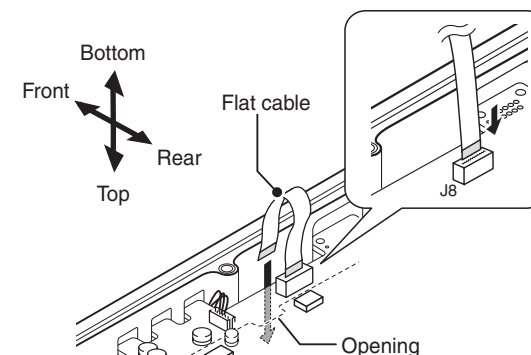
- Be sure to match the holes in the controller to the projections on the channel module's chassis.



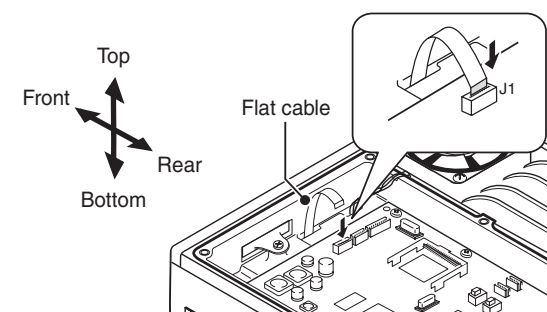
• Connecting the flat cable

Make sure to insert the flat cable with the metal strips facing the edge of the PCB, and not the opposite way.

- ① Turn the channel module upside down. Insert one end of the flat cable into J8 on the PCB of the channel module. Then, carefully pass the flat cable through the opening of the channel module's chassis to the top side.

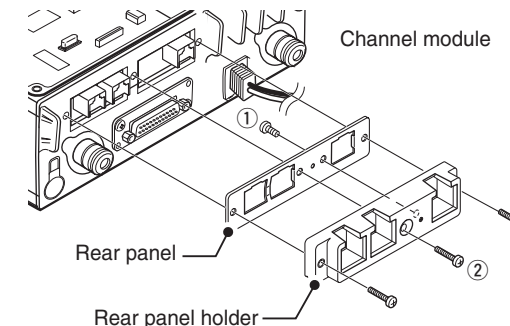


- ② Turn over the channel module. Carefully pull out the other end of the flat cable from the opening, and then insert it into J1 on the controller.



• Attaching the rear panel

- ① Attach the supplied rear panel to the rear panel holder using one of the seven supplied screws (3x8).
- ② Attach the rear panel and holder set to the channel module using the three supplied screws (3x12).



✓ For your information

When you have installed a channel extension module (optional UR-FR5000/UR-FR6000 series), an additional controller allows you to control each channel module from a PC console in the Conventional/Trunking operation mode.

ABOUT THE CF CARD

The UC-FR5000 #02/#03 comes with a CF card inserted in the controller's CF card slot. Please take notice of the following.

CAUTION: NEVER turn OFF the repeater while the data is being transferred. Otherwise, the data on the CF card may become corrupted.

CAUTION: Use the CF card only in the UC-FR5000. Inserting the CF card into other equipment may corrupt the card's data.

NOTE: When no CF card is inserted, the controller cannot be used for Multi Site Conventional/Trunking mode operation.

OPTION

CF-FR5000MC CF CARD

Upgrades the UC-FR5000#01 to enable the Multi Site Conventional mode. Same as that supplied with #02.

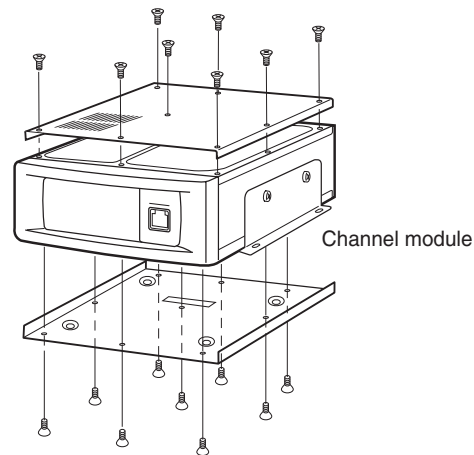
CF-FR5000MT CF CARD

Upgrades the UC-FR5000#01 to enable the Multi Site Conventional/Trunking mode. Same as that supplied with #03.

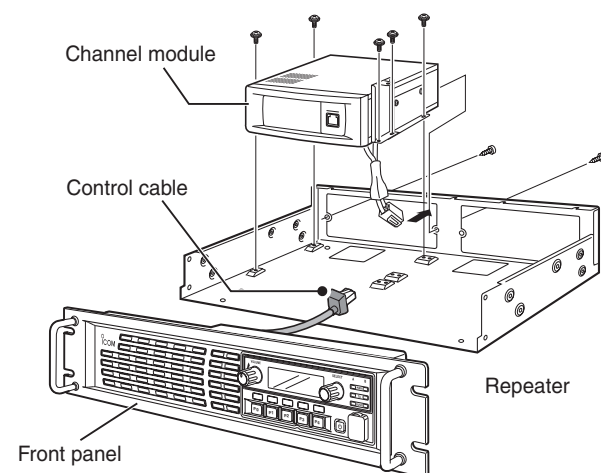
Icom, Icom Inc. and the Icom logo are registered trademarks of Icom Incorporated (Japan) in Japan, the United States, the United Kingdom, Germany, France, Spain, Russia and/or other countries. JavaScript is a registered trademark of Sun Microsystems, Inc. All other products or brands are registered trademarks or trademarks of their respective holders.

Assembling the unit

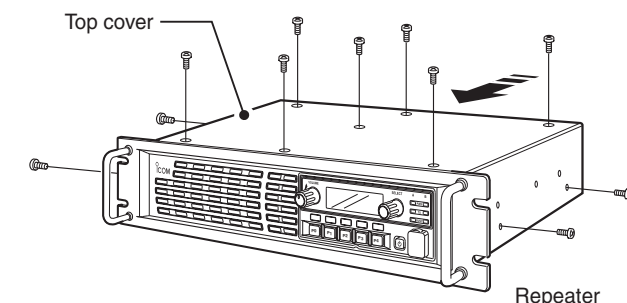
- ① Re-attach the top and bottom covers of the channel module, and then tighten all the screws.



- ② Re-install the channel module and the screws to their original positions, and then connect the control cable of the repeater's front panel to the channel module.



- ③ Re-attach the top cover of the repeater, and then tighten the seven screws for the top and the two screws on both sides of the repeater.



Connection

CAT-5 straight cables and a Hub (or a router) are required for connection (purchase separately).

BE SURE to cover each connected cable with a supplied dust protector. Even if the cable has its own cover, replace it with the supplied dust protector.

KEEP the supplied connector caps attached when the connectors are not in use, to avoid getting bad contacts from dust and moisture.

Each controller has a LAN connector and two BUS connectors.

① [LAN] connector

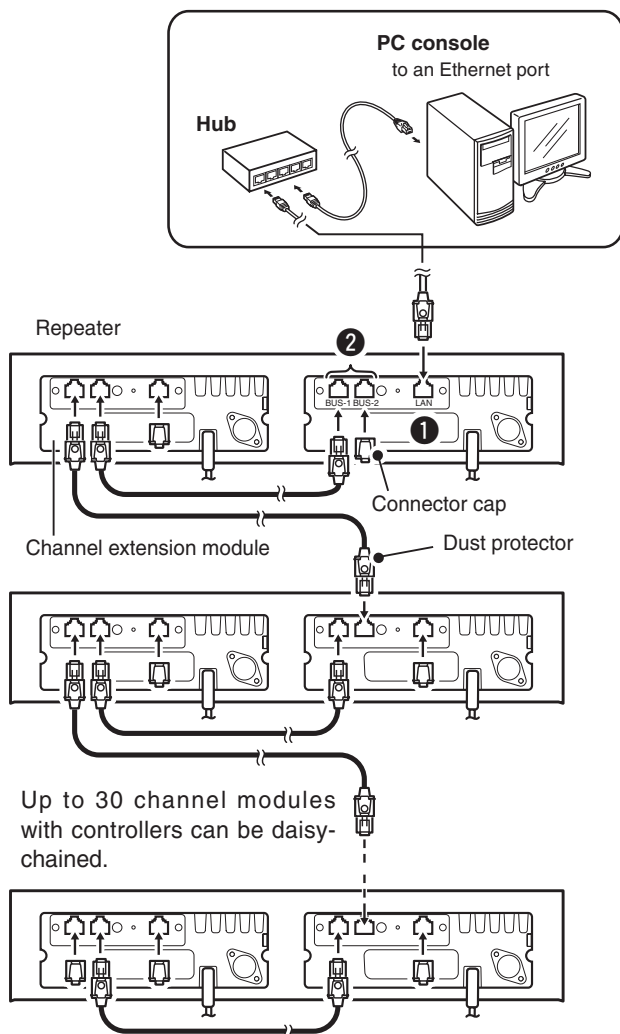
For an Ethernet connection. Connect the controller to an Ethernet (LAN) port of a PC console through a Hub (or a router).

In trunking mode operation, the controller at one end of the chain must be connected. You can control the controller and all others in the chain from the PC console.

② [BUS] connectors (BUS-1, BUS-2)

For data communication between the controllers in trunking mode operation, either BUS-1 or BUS-2 can be used. They enable the controllers to be "daisy-chained" together, and form a network that allows trunking and other data to pass among them.

* The illustration below describes one example of a connection for trunking mode operation.



The Setting screen of the UC-FR5000

Internet Explorer 6.0 or later is required to correctly open the setting screen of the controller. The following instructions are based on using Internet Explorer 7.0.

JavaScript must be installed to open the side menu and help window of the Setting screen.

• Accessing the setting screen

It takes 2 to 3 minutes (typical) for the controller to start up the software. Please wait to launch the web browser until the operating system is up.

- ① Connect the controller to a PC console with a CAT-5 straight cable (See "Connection" to the left), and then turn ON the repeater.

- ② Before accessing the Setting screen, change the IP address of the PC console to 192.168.0.XXX* (Subnet mask should be 255.255.255.0) using the Control Panel.

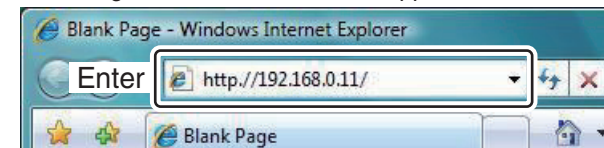
* Input 1 to 254 (except 11) instead of XXX.

Refer to the Operating System's manual for details.

- ③ Open your web browser, enter "http:// 192.168.0.11/" (default IP address of the UC- FR5000) into the address bar, and then push the [Enter] key.

Ask your system administrator for details.

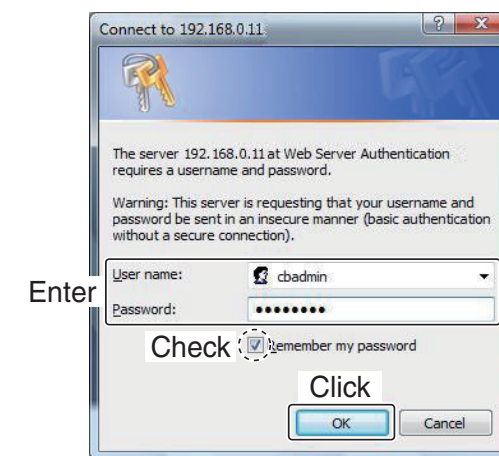
- The Login Authentication screen appears.



- ④ Enter "cbadmin" (default user name) and "ucfr5000" (default password) in their respective input field in the Login Authentication screen, and then click the [OK] button.

If you want the screen to remember not only the user name but also the password, check the box, "Remember my password".

- The Opening screen appears.

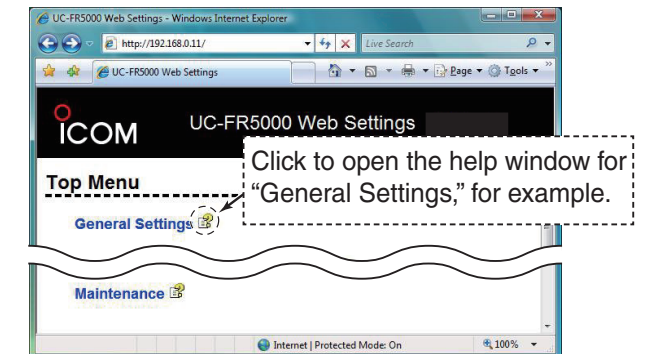


You can change the user name and password in the Setting screen. Refer the help window of the Setting screen for details.

• Opening the help window

The Setting screen of the controller has a help window to describe functions and settings.

When you don't understand the meaning of an item, or how to configure the controller, click a question mark icon on the screen to open the help window.



• Initialization

You can reset all set contents, including the network settings of the controller, to the factory default from a PC console.

- ① Connect the controller to a PC console, and then turn ON the repeater.

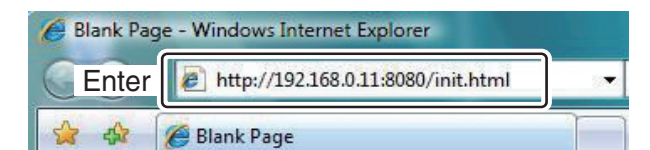
- ② Open your web browser, enter the initialize address into the address bar, and then push the [Enter] key.

- Initialize address: http://(IP address):8080/init.html

- When the IP address of the controller is 192.168.0.11*, enter "http://192.168.0.11:8080/init.html" as the initialize address.

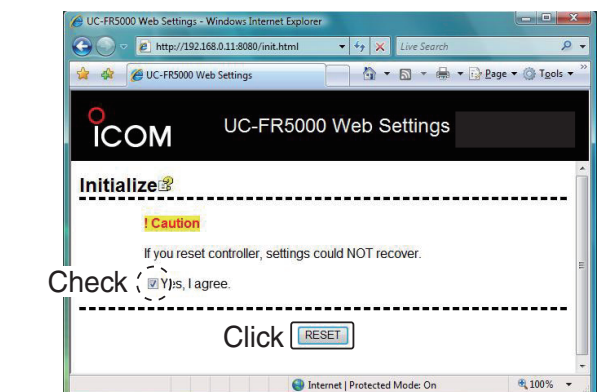
* The IP address is an example only. Check the IP address of the controller.

- The initialize screen appears.



- ③ Click the [RESET] button after checking the box, "Yes, I agree." to initialize the settings.

If you use the UC-FR5000 #03, you can select whether or not to reset the Network settings as well as other settings. Please refer to the help window for details.



This screen slightly differs, depending on the version.

Icom Inc.

1-1-32 Kamiminami, Hirano-ku, Osaka 547-0003, Japan

Count on us!

A-6691H-1EX-⑤ Printed in Japan
© 2008-2012 Icom Inc.