

# Pairing a Shelly BLU device to a Bluetooth enabled Shelly.

The following guide is to configure a Shelly Bluetooth enabled device, to function as a Bluetooth gateway for a range of Shelly BLU devices, as they cannot connect directly to the Wi-Fi network.

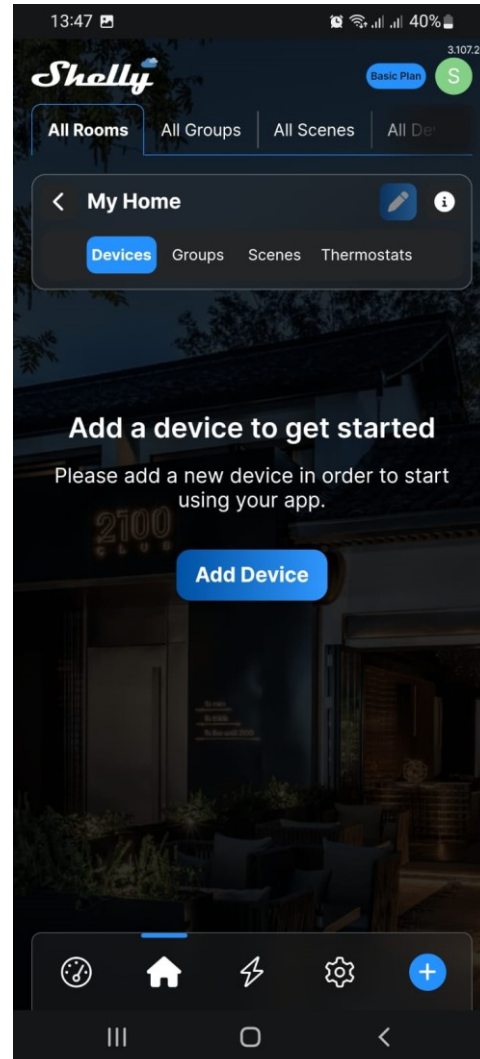
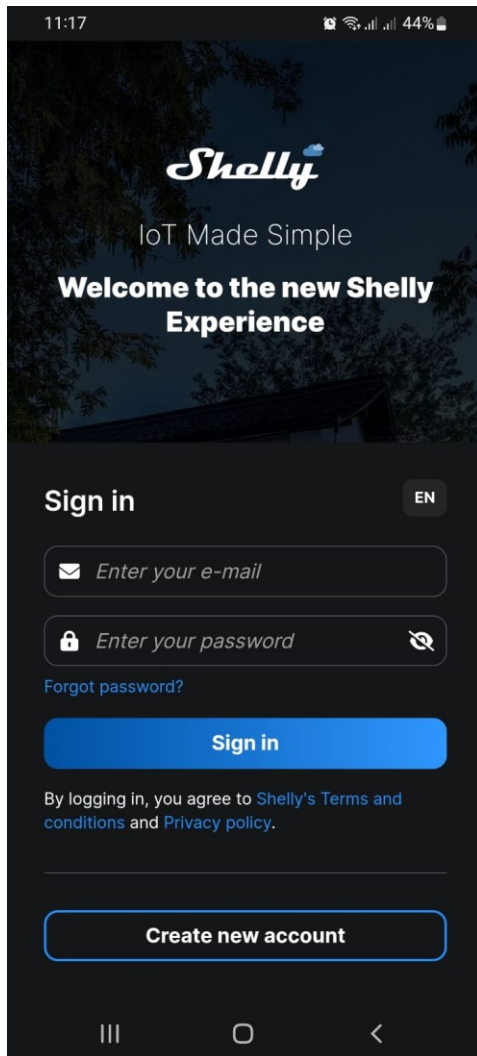
Device examples: Shelly BLU Gateway and Shelly Plus 1PM



The Shelly devices require installation and to be powered on to start with the configuration.

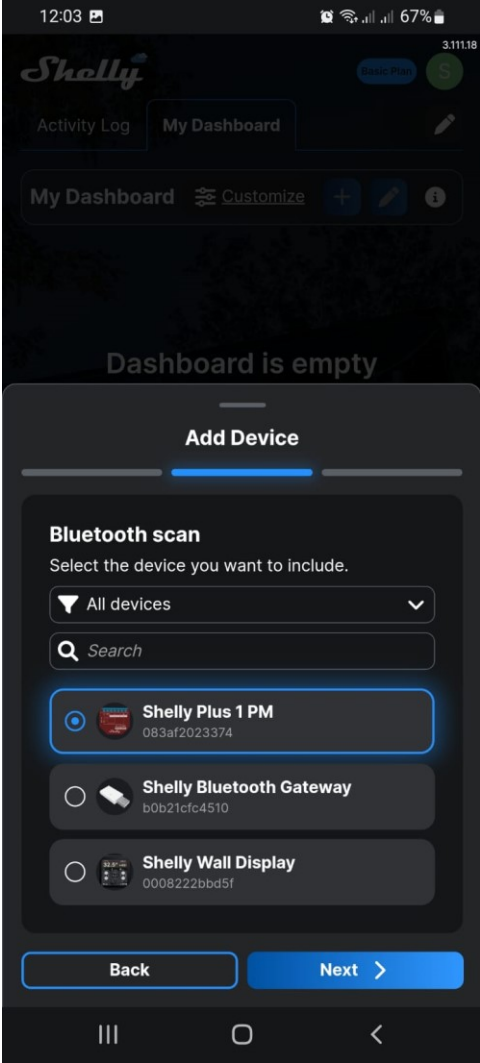
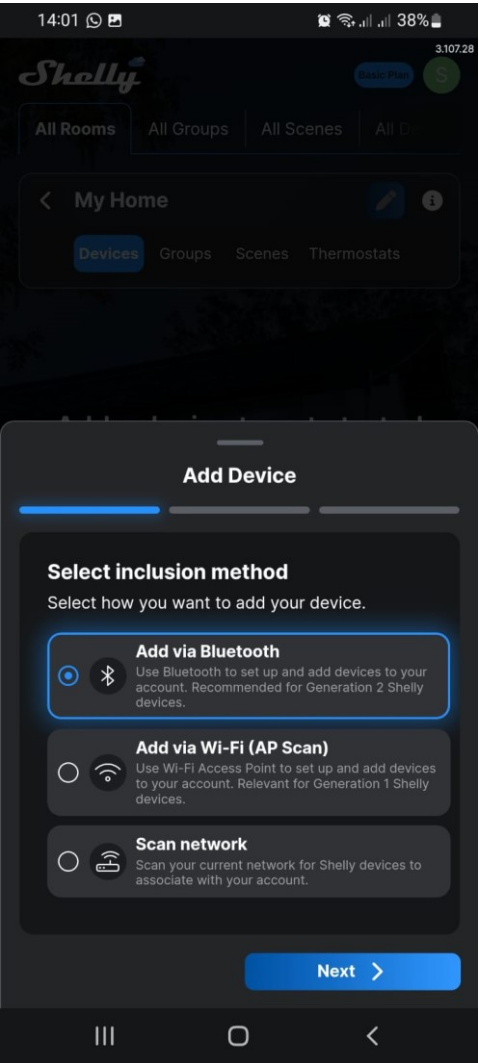
**Step 1:** Open the Shelly Smart Control application on your mobile phone and sign in. Make sure the phone's Bluetooth is turned on.

**Step 2: Add the Shelly Bluetooth enabled device to the required room by selecting Add Device.**



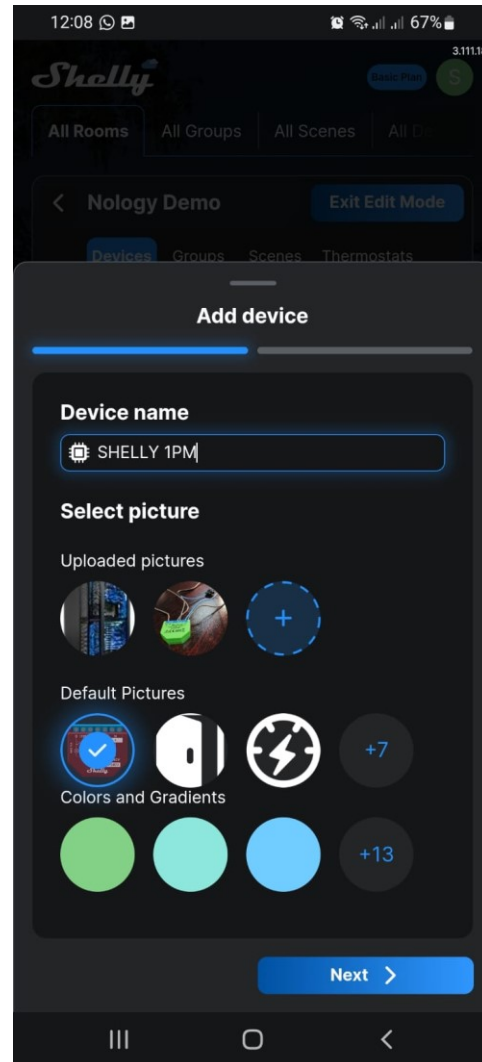
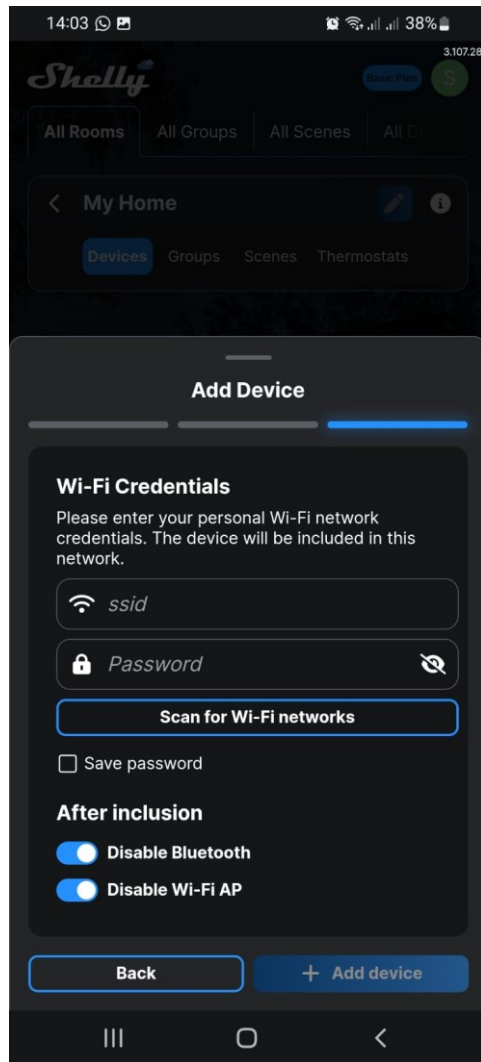
Step3: Select Add via Bluetooth and next.

Step 4: Select the device and Next.



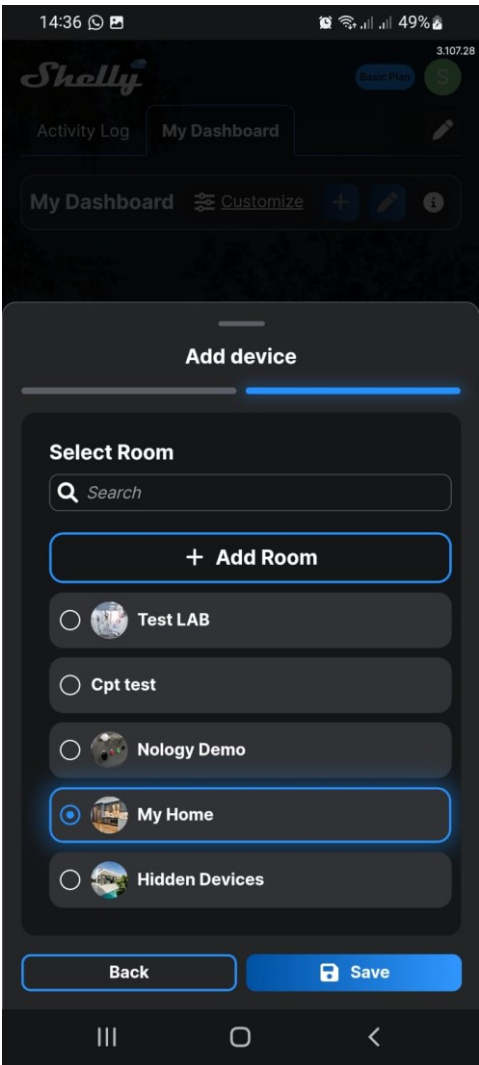
**Step 4: Enter the existing Wi-Fi credentials and select Add device.**

**Step 5: Enter a Device name -> Select a picture -> Next.**



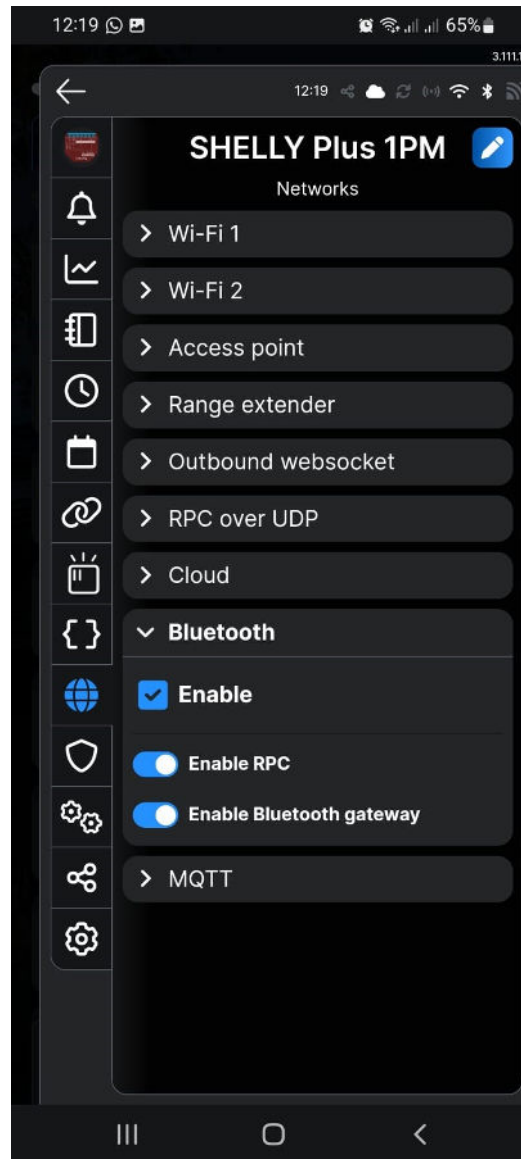
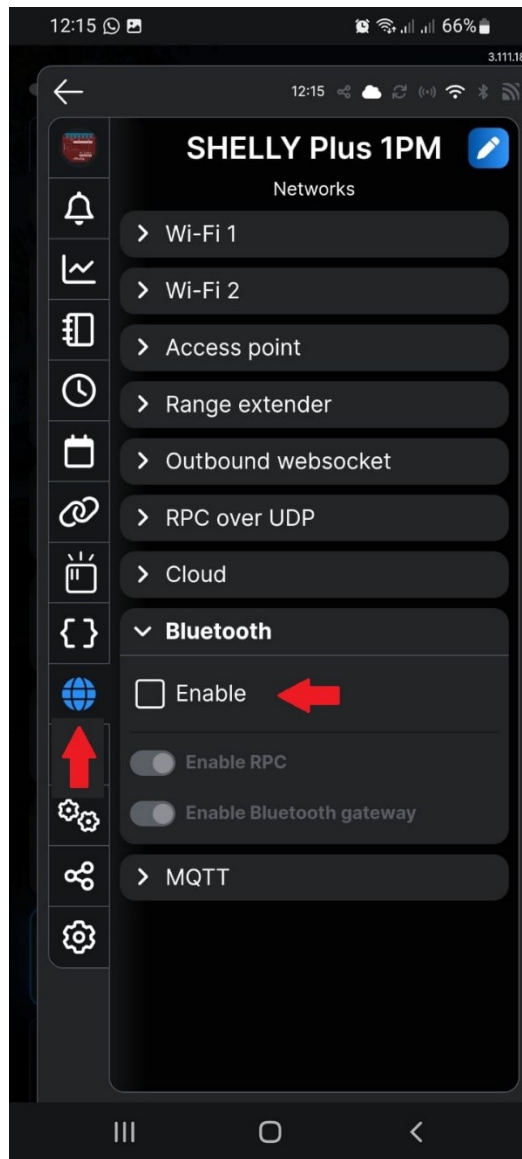
Step 6: Select a Room and Save.

Step 7: Select the newly added device.



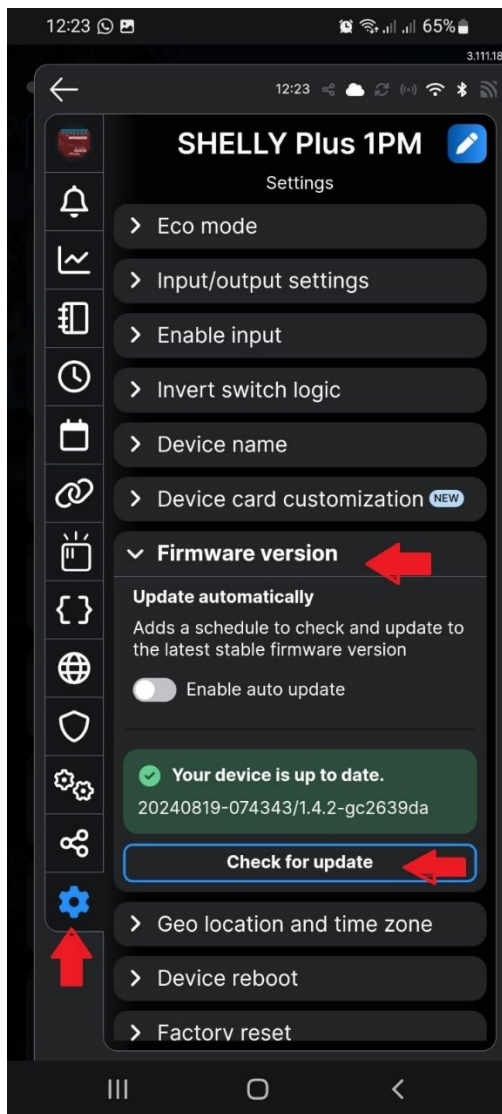
**Step 8: We need to enable the Bluetooth Gateway function for the Shelly BLU devices to pair and connect.**

**Step 9: Select Networks -> Bluetooth -> Enable -> Confirm -> Reboot.**



**Step 10: The firmware on the Shelly Bluetooth gateway must be on the latest version before adding any BLU devices.**

**Step 11: Select Settings -> Firmware version -> Check for update and update if one is available.**

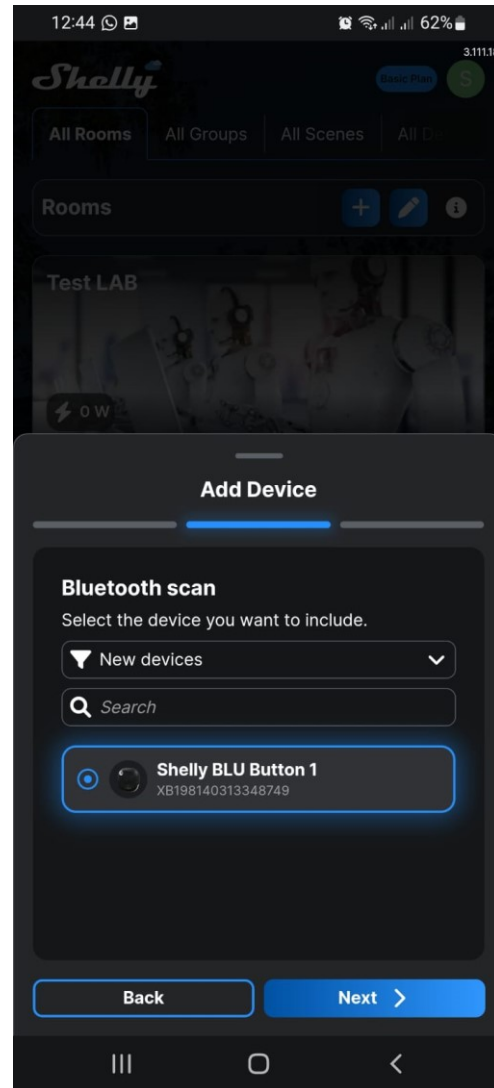
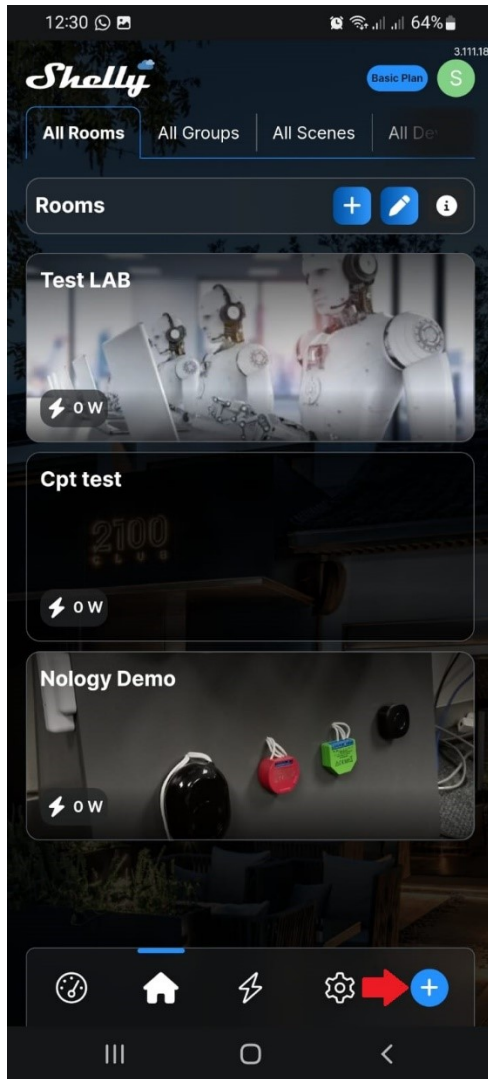




**Step 12: Navigate back to the room and select + to add a new device.**

**Step 13: Press and hold the button on the BLU device you wish to add to start the pairing process.**

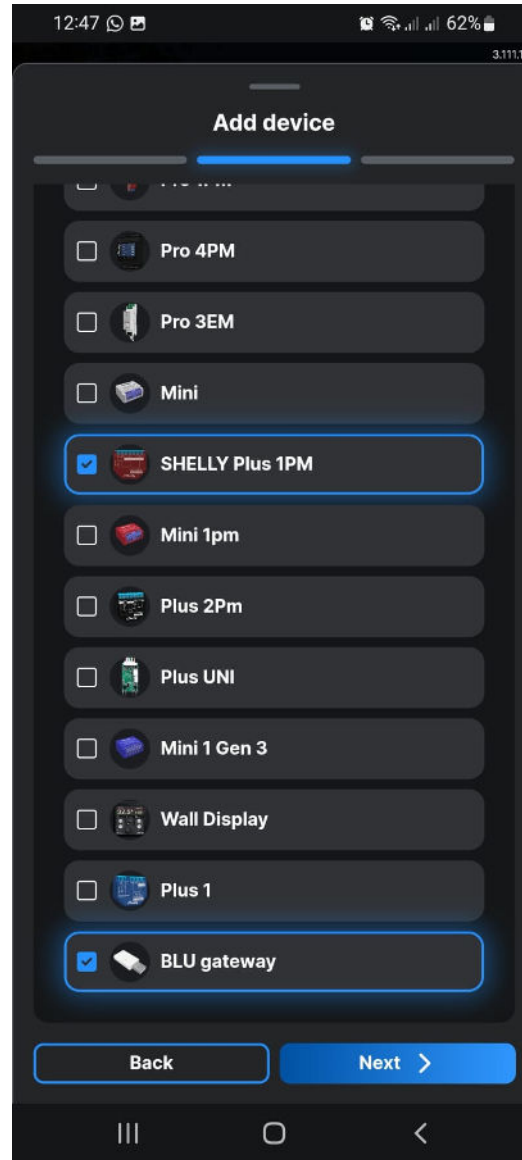
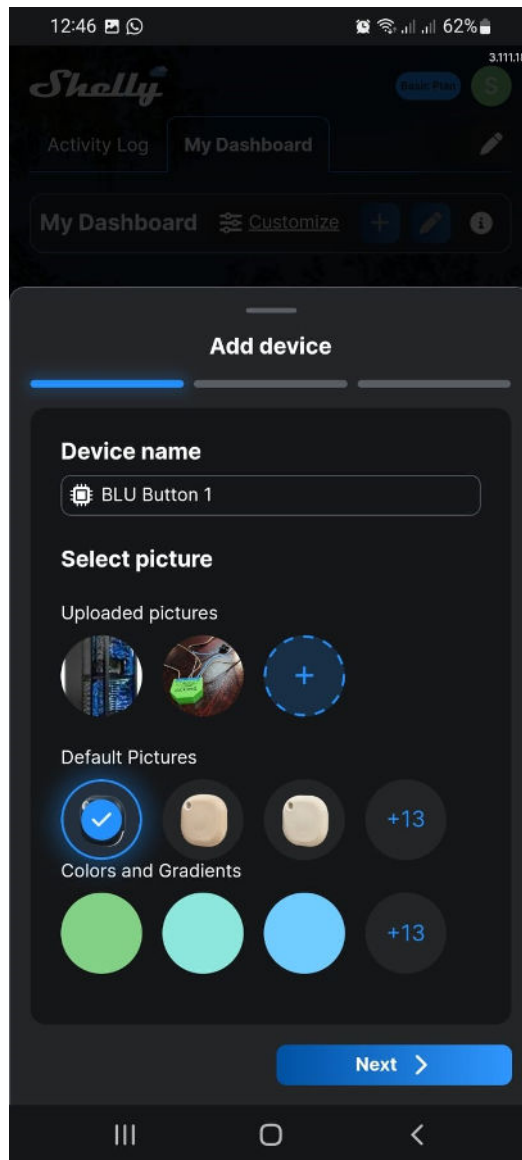
**Step 14: Select the device and click next.**



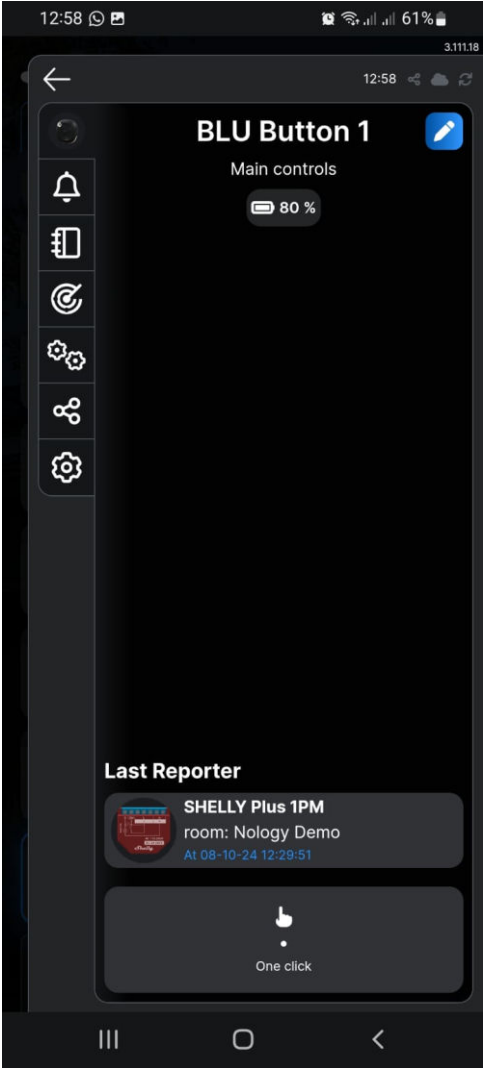
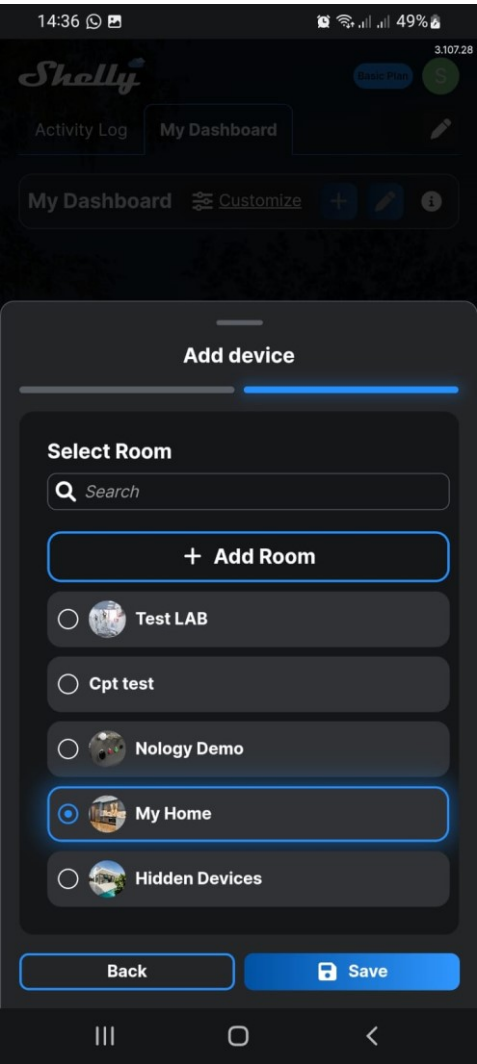


**Step 15: Click the button on the BLU device when prompted -> Add a name -> Click Next.**

**Step 16: The list of available Bluetooth Gateways will be preselected -> Click Next.**



Step 17: Select a Room -> Click Next.



Congratulations! The new Shelly BLU device is paired and connected to the Bluetooth gateway.